

Ontario School District 8C

2025-27 Integrated Programs

Contents

- Purpose of Presentation
- Background & Context
- Planning Team
- Plan Inputs
- Plan Overview
- What's Next

Purpose for Presentation

- Share what was prioritized
- Explain how it was developed
- Hear additional feedback
- To explain and seek board approval



Background

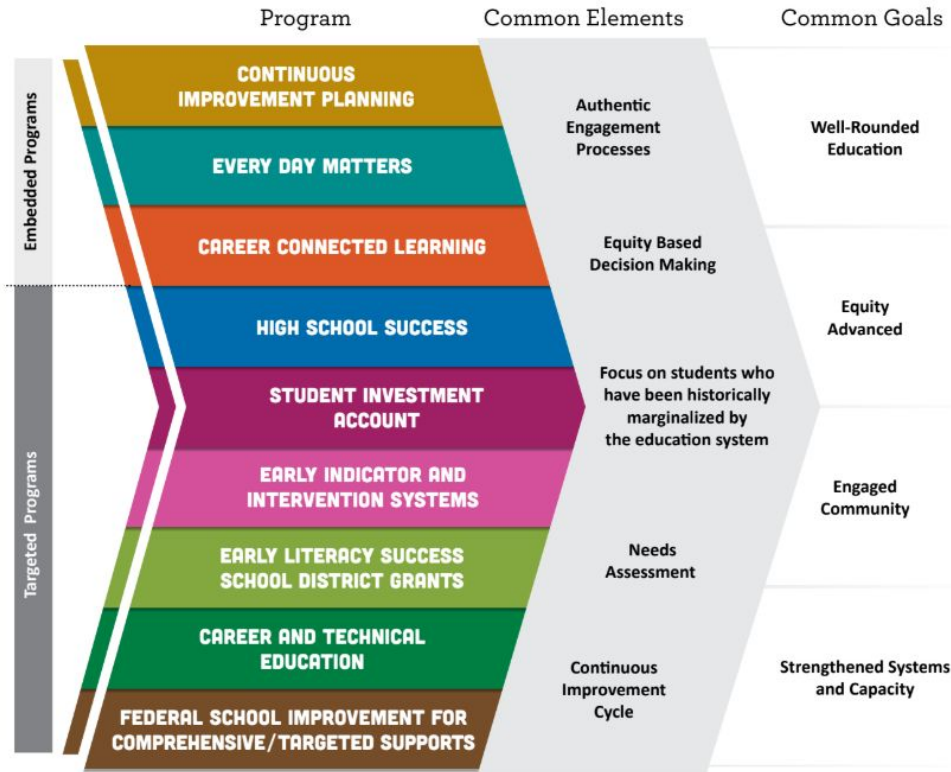


These used to be separate grants ... why combine them under one “umbrella” of Integrated Programs?

- **Responsive to requests** from educational leaders and state legislators
- **Combined processes** for community engagement, needs assessment, planning, budgeting and evaluation for 6 programs
- **Reduced burden and redundancies** and improve the framework by which progress can be measured over time

Six Programs & Common Goals

Targeted Programs



Summary of Targeted Program Purposes

High School Success (HSS) - Systems to **improve graduation rates and college/career readiness.**

Student Investment Account (SIA) - To meet students' **mental health, behavioral needs** and **increase academic achievement/reduce disparities for student focal groups.**

Early Literacy Success School District Grant (ELSSDG) - Designed to **increase literacy across the state** with a vision for research-aligned, culturally responsive early literacy instruction.

Career and Technical Education - Perkins V (CTE) - **Improving access and participation** in education and training programs that prepare learners for high-wage, high-skill, in-demand careers.

Early Indicator and Intervention System (EIIS) - The development of a **data collection and analysis system**, in which educators collaborate, to **identify supports for students.**

Federal School Improvement (CSI/TSI) - Program to **address academic disparities** for named focal student groups and subject areas at schools identified for improvement.

Allocations as of March 2025

INTEGRATED PROGRAMS AWARDED GRANTS	2025-26	2026-27
STUDENT INVESTMENT ACCOUNT	\$2,434,619.03	\$2,533,991.23
EARLY INDICATOR AND INTERVENTION SYSTEMS	\$6569.01	\$6569.01
HIGH SCHOOL SUCCESS	\$649,486.17	\$675,996.81
EARLY LITERACY	\$181,010.60	\$188,398.78
TOTALS	\$3,271,684.81	\$3,404,955.83

Meet our Planning Team Members

Nicole Albisu - Superintendent

Jodi Elizondo - Director of District Improvement Initiatives & Grants

Melissa Williams - Director of Instruction and Student Services

Eric Norton - Director of Human Resources

Anabel Ortiz-Chavolla - Director of School Improvement & Federal Programs

Devin Collins - Finance Director

Todd Stephan - Technology Director

Bob Bennett - Director of Maintenance

Andrew Kressly - Assistant Maintenance Supervisor

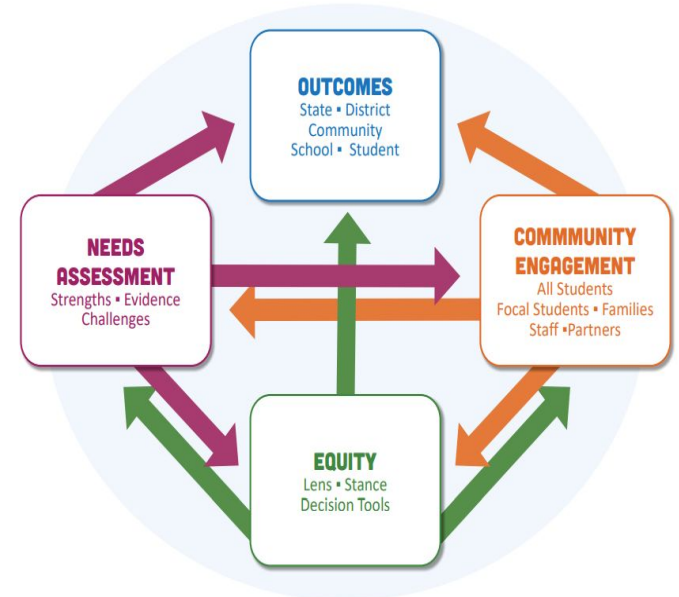
Mike Padilla - Student Safety and Prevention

Christi Swan - Early Literacy Coordinator

Jose Marquez - Mental Health Supervisor

Required Planning Processes

- Use of an equity lens
- Community engagement
- Comprehensive Needs Assessment
- Consider the Oregon Quality Education Model and Student Success Plans
- Review and use regional CTE Consortia inputs
- Further Examination of Potential Impact on Focal Students tied to Planning Decisions
- **Development of a four-year plan** with clear Outcomes, Strategies, and Activities



Equity Lens, Tool & Decision Making

OREGON EQUITY LENS

The Oregon Equity Lens for Education is a tool that helps educators make decisions with an equity focus. It encourages reflection on how actions affect different student groups, especially those historically underserved, by asking questions about barriers, benefits, and inclusion. The goal is to create more equitable and inclusive educational environments.

Engagement Activities

- Family Nights
- Open House Events
- Surveys
- Remind Messaging
- Website
- Newsletters
- Individual School Events
- Migrant Events

Needs Assessment Highlights

- Safety
- Mental Health
- College Credit Offerings/Support
- Extracurricular Offerings/Facilities
- Academic Supports
- Teacher Retention

Our Plan - Priorities

- Mental Health Supports
- Safety
- CTE Offerings
- College Credit Access
- T.A.G. Student Support
- Early Literacy
- Extracurricular Offerings/Spaces/Support
- 9th Grade Transitional Support
- Teacher Retention

Our Plan - Intended Outcomes

- Tiered mental health supports
- Layered safety plan
- Relevant CTE programs with high participation
- Barriers to college credit within our control removed
- Vibrant T.A.G. program with identification across all groups
- Systematic implementation of successful Early Literacy
- High-interest extra-curricular offerings and spaces
- Systematic and intentional 9th grade transition program
- Retention of teachers in state-tested, heavily graded subject areas

Our Plan- Strategies

Continue to:

- Improve safety through facility upgrades and systems
- Grow mental health resources and supports
- Strengthen current CTE programs
- Identify and remove barriers to college credit
- Provide T.A.G. support and identification emphasis
- Implement Early Literacy curriculum and data collection /use
- Build high-interest extracurricular capacity/spaces
- Conduct 9th grade transition activities
- Provide stipend to teachers in state-tested, heavy grading positions

Our Plan - Key Investments

- Building and personal safety (remodels, door hardware, technology, district safety supervisor, SRO)
- Mental Health resources and support (counselors, psychologist, Restorative Practice, Sources of Strength, Community Partnerships)
- CTE Program investments (equipment, personnel)
- College tuition reimbursement
- T.A.G. Specialist
- Early Literacy curriculum, professional development, specialist, coach
- Fund extra-curricular activities and spaces (ex: boxing, e-sports, sports field)
- Conduct 9th grade transition (Link Crew)
- Stipends for teachers in state-tested, heavily graded subject areas

[Link to Integrated Planning and Budget Template on our Website](https://www.ontario.k12.or.us/District/Grants--Initiatives/index.html)

<https://www.ontario.k12.or.us/District/Grants--Initiatives/index.html>

Our Plan - Tiered Approach

Tiers of Planning & Budgeting allow for nimble course changes that have been pre-considered but aren't within the current budget parameters.

In our district, these additional strategies and activities are possible if we move to another tier in our plan:

- *Continued movement toward facility safety upgrades***
- *Continued technology replacement***
- *Increased supports for mental health***

Longitudinal Performance Growth Targets (LPGTs)

Required and set based on:

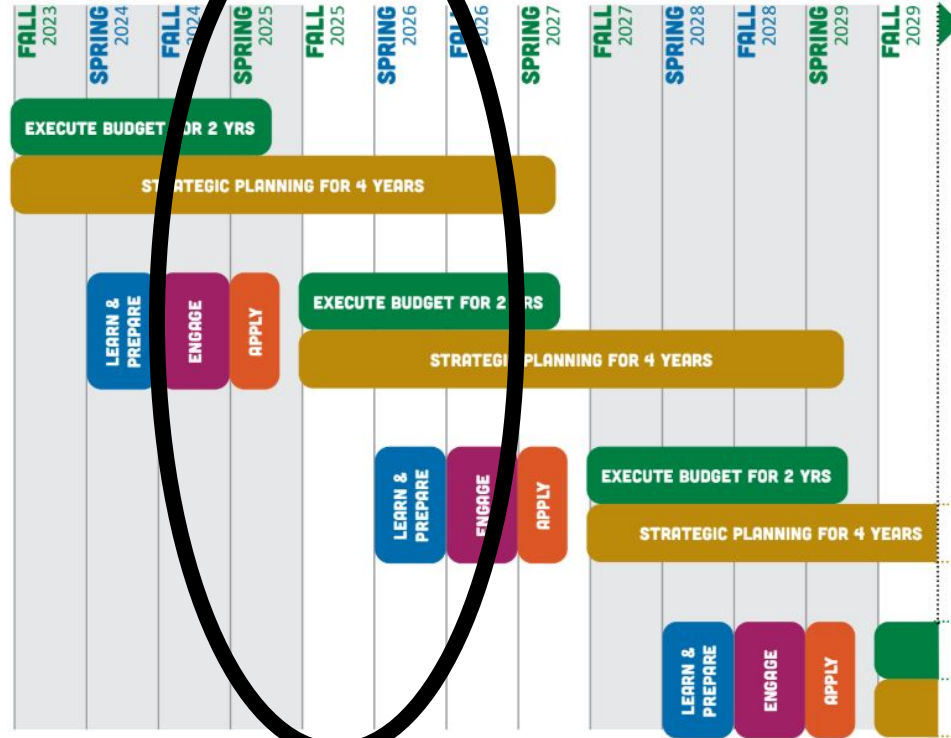
- Data available for longitudinal analysis;
- Guidance established by the department; and
- Use the following applicable metrics for the overall population and disaggregated:
 - **Third-grade reading proficiency rates measured by ELA**
 - **Ninth-grade on-track rates**
 - **Regular attendance rates**
 - **Four-year or on-time graduation rates**
 - **Five-year completion rates**
 - Other local metrics may be used to develop applicable performance growth targets.



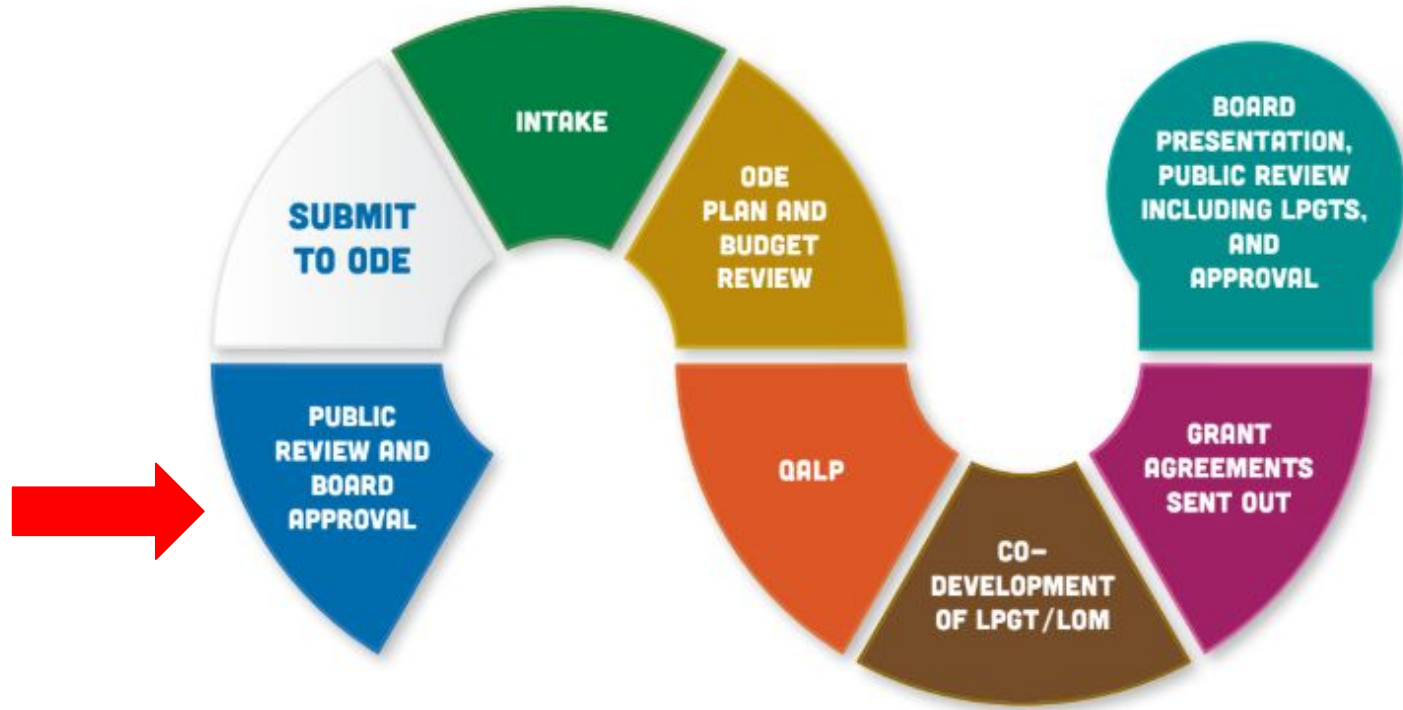
Referred to as
"5 Common Metrics"

Application Planning

The following graphic illustrates how this guidance is implemented over the next several years



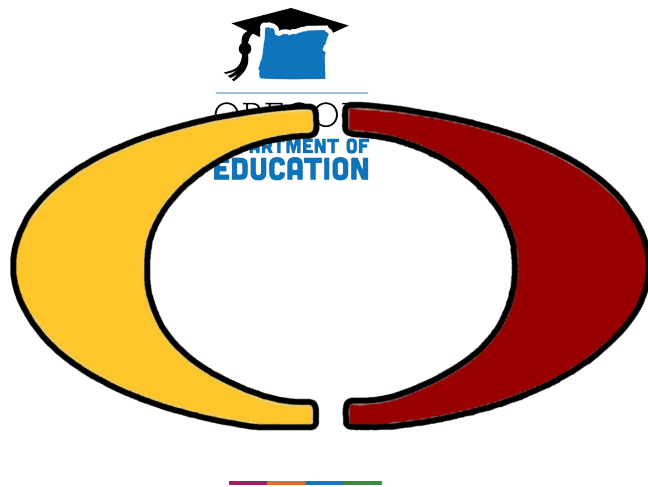
What Happens Next?



Questions & Comments

This slideshow and other information related to grants can be found on our website:

<https://www.ontario.k12.or.us/District/Grants--Initiatives/index.html>



Ontario School District

2025-27 Integrated Programs Grant Budgets

2025-27 INTEGRATED PROGRAMS NARRATIVE



Narratives can be found at this link:

https://drive.google.com/file/d/196_f5g6s2ln3waQ8jR3OcODdL-P3zd5G/view?usp=sharing

2025-27 EARLY LITERACY GRANT

OUTCOMES AND STRATEGIES

STRENGTHEN CORE EARLY LITERACY INSTRUCTION DISTRICT-WIDE K-3

Provide job-embedded training for teachers and staff through rigorous professional development rooted in research aligned, culturally responsive practices

Literacy coaches offer ongoing professional development during the school year with coaching prioritized for early-career teachers

PARENTS AND GUARDIANS ARE PARTNER IN THE DEVELOPMENT OF THEIR STUDENTS' EARLY LITERACY SKILLS AND KNOWLEDGE

Utilize student growth assessment reading data, disaggregated by student group to monitor progress

REDUCE ACADEMIC DISPARITIES IN EARLY LITERACY FOR FOCAL STUDENT GROUPS

Provide high-dosage tutoring and extended learning opportunities

2025-27 SIA, HSS, AND EIIS GRANT OUTCOMES AND STRATEGIES

ALL STUDENTS IN THE ONTARIO SCHOOL DISTRICT FEEL SAFE ON OUR CAMPUSES

ADDRESS SAFETY OVERSIGHT FOR DISTRICT

IMPROVE CAMPUS SAFETY

INCREASE SUPERVISION OF DISTRICT SAFETY INITIATIVES

ALL STUDENTS WHO HAVE BEEN HISTORICALLY UNDERSERVED WILL HAVE INCREASED ACCESS TO WELL-ROUNDED INSTRUCTION, COLLEGE CREDIT AND CTE OPPORTUNITIES

FIND OPPORTUNITIES TO LOWER THE TEACHER TO STUDENT RATIO

PROVIDE MORE DIRECT SUPPORT FOR COL CRED, CTE

REMOVE BARRIERS TO OBTAINING COLLEGE CREDIT AND CTE CERTIFICATIONS

PROVIDE SUPPORT FOR CURRICULUM IMPLEMENTATION

INCREASE T.A.G. IDENTIFICATION AND OPPORTUNITIES

INCREASE WELL-ROUNDED LEARNING OPPORTUNITIES

DROPOUT RATE DECREASED BY INCREASING GRADUATION RATE TO 93%

UTILIZE ATTENDANCE PROGRAMS TO MONITOR ATTENDANCE

CREATE OPPORTUNITIES FOR 9TH GRADERS TO TRANSITION AND ACCLIMATE TO HIGH SCHOOL IN A MANNER THAT SETS THEM UP FOR SUCCESS

CREATE INCENTIVE PROGRAMS TO MOTIVATE ACADEMIC PROGRESS AND ATTENDANCE

RESOURCES AND OUTLETS FOR THE MENTAL HEALTH OF STUDENTS, WITH A FOCUS ON THE UNIQUE NEEDS OF THOSE HISTORICALLY UNDERSERVED, ARE PROVIDED TO REDUCE BARRIERS TO ACADEMIC SUCCESS

IMPROVE MENTAL HEALTH SUPPORT SYSTEMS MONITORING AND DESIGN

LOOK FOR WAYS TO OFFER OPPORTUNITIES TO FEEL VALUED, SUCCESSFUL, AND PRODUCTIVE IN AREAS OF INTEREST TO HELP WITH MENTAL HEALTH AND INCREASE CONNECTION TO SCHOOL

PROVIDE OPPORTUNITIES FOR STUDENTS, STAFF, PARENTS AND COMMUNITY TO PROVIDE FEEDBACK

FIND METHOD OF ADDRESSING STUDENT BEHAVIOR THAT IS MORE RESPONSIVE TO THEIR MENTAL HEALTH NEEDS

2025-27 EIS BUDGET



	2025-26	2026-27
<i>Go Guardian Computer Safety Monitoring System</i>	\$6569.01	\$6569.01

2025-27 SIA BUDGET

	2025-26	2026-27
<i>Allocation</i>	\$2,434,619.03	\$2,533,991.23
<i>Indirect</i>	\$121,730.95	\$126,699.56
<i>District Safety Supervisor</i>	\$114,292	\$118,801
<i>District Improvement Initiatives</i>	\$147,022	\$152,857
<i>Elementary Teachers to Reduce Class Sizes</i>	\$106,698	\$106,698
<i>Elementary Instructional Assistants to Increase Support</i>	\$70,746	\$70,746
<i>Certified PE Teachers to Increase Equal Access to Students</i>	\$178,640	\$178,640

2025-27 SIA BUDGET CONTINUED

	2025-26	2026-27
<i>Technology Support for Online Curriculum</i>	\$110,552	\$110,552
<i>T.A.G. Specialist</i>	\$119,790	\$119,790
<i>District Nurse for Health Monitoring and Advising</i>	\$117,726	\$122,374
<i>Security Tech Specialist</i>	\$21,368	\$21,368
<i>Well-Rounded Learning Opportunities</i>	\$40,916	\$42,348
<i>Tech Supervisor</i>	\$41,295	\$42,392
<i>Additional Social Studies Teacher to Reduce Class Sizes</i>	\$95,455	\$95,455
<i>District/Building Counseling Services</i>	\$702,620	\$783,886
<i>Supplies, Fuel and Professional Development</i>	\$10,400	\$10,400

2025-27 SIA BUDGET CONTINUED

	2025-26	2026-27
<i>Programs/Supplies/Equipment to Support Building and Personal Safety</i>	\$17,000	\$17,000
<i>Building Safety Improvements</i>	\$17,315	\$24,083.31
<i>Student Interest Program</i>	\$500	\$500
<i>Stakeholder Engagement Activities</i>	\$5,000	\$5,000
<i>Student Mental Health Programs</i>	\$15,000	\$15,000
<i>2 District SRO's</i>	\$150,000	\$150,000
<i>High School Summer School</i>	\$10,000	\$10,000
<i>Intervention and Disgnostic Programs</i>	\$60,000	\$62,000
<i>OHS Link Crew</i>	\$14,000	\$14,000

2025-27 SIA BUDGET CONTINUED

	2025-26	2026-27
<i>State-tested/Extensively graded Core Subject Stipends</i>	\$120,000	\$120,000
<i>Choir Accompanist Stipend</i>	\$1,500	\$1,500
<i>Programs for At-Risk Youth</i>	\$25,053.08	\$25,053.00

2025-27 HSS BUDGET

	2025-26	2026-27
<i>Allocation</i>	\$649,486.17	\$675,995.81
<i>Student Success/Col Cred Coordinator OHS</i>	\$119,790	\$119,790
<i>Student Success/Col Cred Coordinator OMS</i>	\$15,455	\$15,455
<i>2 CTE Instructors</i>	\$239,580	\$239,580
<i>District Secondary Curriculum Oversight/Coordinator</i>	\$49,008	\$50,953
<i>OHS Counseling Support</i>	\$7,315	\$21,197.64
<i>Secondary Math Curriculum Development and PD</i>	\$7,314	\$7,314
<i>Student College Credit Tuition Payments</i>	\$42,685	\$50,000
<i>Hall Safety Support Program</i>	\$6,000	\$6,000
<i>ESD TVT Partnership</i>	\$115,360	\$117,667

2025-27 HSS BUDGET CONTINUED

	2025-26	2026-27
<i>CTE Certifications and Equipment</i>	\$10,000	\$10,000
<i>Attendance Incentive Supplies</i>	\$2,000	\$2,000
<i>YouScience Aptitude Testing Subscription</i>	\$9000.17	\$9000.17
<i>Indirect</i>	\$25,979	\$27,039

2025-27 EARLY LITERACY BUDGET

	2025-26	2026-27
<i>Allocation</i>	\$181,010.60	\$188,398.78
<i>Indirect</i>	\$9,050	\$9,419
<i>Early Literacy Coordinator</i>	\$66,112	\$68,723
<i>Early Literacy Instructional Coach</i>	\$46,049	\$47,891
<i>Easy CBM</i>	\$4,341	\$4,341
<i>PDX Reading Specialist</i>	\$3,795	\$3,795
<i>Professional Development</i>	\$3,795	\$3,795
<i>RTI</i>	\$9,747	\$9,747
<i>Intervention Materials</i>	\$31,017	\$6,017
<i>High Dosage Tutoring</i>	\$7,899.60	\$7,899.60