

High Performance Roofing, Building Envelopes and Construction Services

Proposal for façade repair & preventative maintenance



Long
Live
Your
Buildings



Buckeye Local SD
Kingsville Elementary School Façade Repair Proposal
WTI #: 5072161

June 4, 2026

Mr. Steve Kray
Buckeye Local SD
3436 Edgewood Drive
Ashtabula, OH 44004

RE: Kingsville Elementary School
Façade Repair and Preventative Maintenance

Weatherproofing Technologies, Inc. (WTI) is pleased to submit to Buckeye Local School District this proposal for façade repair work at Kingsville Elementary School, located at 5875 OH-193, Kingsville, OH 44048. WTI has engaged with an engineer and multiple trade specialists to review, discuss, and coordinate the scope of work associated with the façade repairs at Kingsville Elementary School. The scope of the work below is for a turnkey operation as outlined through Contract #: AEPA IFB 025-D. We appreciate the opportunity to support this project and look forward to working with you.



Kingsville Elementary School



Exterior Scope of Work Elevation Locations

SCOPE OF WORK BASE PROPOSAL

MOBILIZATION & DEMOBILIZATION

1. Provide construction support services and part-time on-site construction superintendent by WTI.
 - a.) Support services process includes preconstruction and progress meetings, final inspection, project closeout book and post project follow up.
2. Mobilize the site with material and equipment needed to safely complete the project.
 - a.) Set up job safety complying with OSHA requirements.
 - Provide all protection measures and facilities mandated by applicable State laws and City Ordinances.
 - Perform all mobilization and site preparation activities necessary for commencement of the work
 - b.) Set up barricades per OSHA regulations.
 - Install all temporary partitions and barricades necessary to secure and separate the work area.
 - c.) Provide all ground protection.
 - Establish and maintain all required general conditions for the project.
 - Provide temporary protection and sidewalk bridges at entrance areas as required for safe pedestrian access.
 - Install perimeter netting or fencing to comply with OSHA safety requirements.
 - Protect all adjacent building elements, including walls, doors, and windows, from damage during construction activities.
3. Demobilize equipment and restore the site upon completion of construction activities.
4. Conduct all required site cleaning and restoration in accordance with the Contract.
5. Documents, manufacturer recommendations, and directives issued by the Engineer.

INSTALLATION OF NEW SUPPLEMENTAL CMU SUPPORTS

1. Install new supplemental supports at areas of bowing CMU block.
2. Install new beam clamps, steel struts, and epoxy anchors in accordance with Detail 1/R-3.
3. Provide all necessary access required to perform the work safely and effectively.
4. Perform all work in full compliance with the drawing details, applicable specifications, and all directives issued by the Engineer.

INSTALLATION OF SUPPLEMENTAL TIES

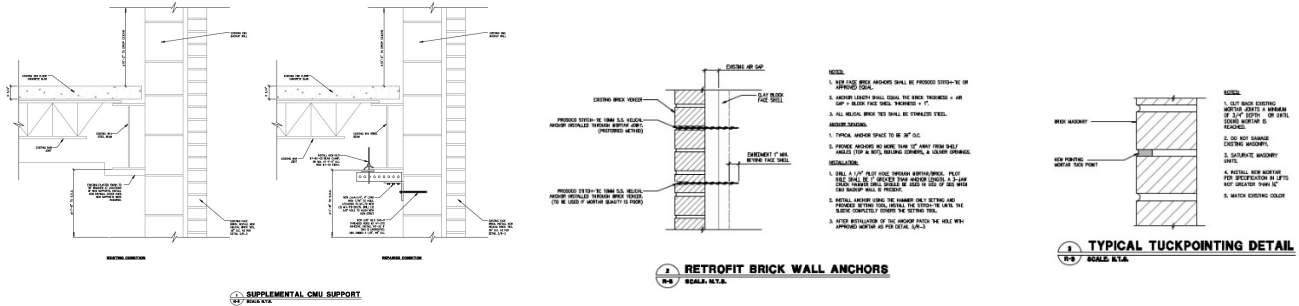
1. Install stainless-steel helical retrofit ties to secure the existing face brick veneer to the backup wall.
2. Perform installation at locations and spacing determined in the field by the Engineer.
3. Provide all required work access to safely and effectively complete the installation.
4. Drill exclusively through mortar joints to avoid damaging existing masonry units.
5. Install retrofit ties to the specified diameter, length, and required embedment in accordance with the manufacturer's instructions.
6. Repaint or repoint drilled mortar joints using color-matched mortar while maintaining proper cavity drainage.
7. Perform all work in accordance with Detail 2/R-2 and all applicable specification sections.

1. Perform interior finish repairs, including removal and replacement of existing plaster at support locations.
2. Complete all associated ceiling repairs impacted by the structural work.
3. Remove and dispose of any hazardous materials in full compliance with local, state, and federal regulations.
4. Provide all necessary work access to safely and effectively perform the required tasks.
5. Carefully remove existing finishes as needed to complete the work.
6. Install drywall over new supports where required.
7. Prepare all interior surfaces for finishing, including patching, smoothing, and surface conditioning.
8. Perform all required painting and ceiling repairs to restore affected areas.
9. Install Dymonic 100 sealant at locations where the exterior wall has separated from the structure, in accordance with the manufacturer's installation instructions, to fill voids at these separation points.
10. Install rubber floor base material to conceal the sealant joints and provide a finished appearance.
11. Execute all work in accordance with the plans, specifications, applicable details, manufacturer recommendations, and directives issued by the engineer.

SCOPE OF WORK ALT. PROPOSAL (ROOF LEVEL)

MOBILIZATION & DEMOBILIZATION

1. Provide construction support services and part-time on-site construction superintendent by WTI.
 - a.) Support services process includes preconstruction and progress meetings, final inspection, project closeout book and post project follow up.
2. Mobilize the site with material and equipment needed to safely complete the project.
 - a.) Set up job safety complying with OSHA requirements.
 - Provide all protection measures and facilities mandated by applicable State laws and City Ordinances.
 - Perform all mobilization and site preparation activities necessary for commencement of the work
 - b.) Set up barricades per OSHA regulations.
 - Install temporary partitions, barricades necessary to secure and separate the work area.
 - c.) Provide all ground protection.
 - Establish and maintain all required general conditions for the project.
 - Provide temporary protection and sidewalk bridges at entrance areas as required for safe pedestrian access.
 - Install perimeter netting or fencing to comply with OSHA safety requirements.
 - Protect all adjacent building elements, including walls, doors, and windows, from damage during construction activities.
3. Demobilize equipment and restore the site upon completion of construction activities.
4. Conduct all required site cleaning and restoration in accordance with the Contract.
5. Documents, manufacturer recommendations, and directives issued by the Engineer.



PROJECT INVESTMENT

Base Proposal: Kingsville Elementary School	Base Proposal Total Investment
Installing Supplemental CMU Supports; Brick Ties; Abatement: Interior Finishes Work and Miscellaneous Sealant Installation	\$98,922.91
Alt. Proposal: Kingsville Elementary School	Alt. Proposal Total Investment
Installing Supplemental CMU Supports at Roof Level & Interior Finishes Work	\$67,249.33
Combined Base and Alt. Proposal: Kingsville Elementary School	Base & Alt. Proposal Total Investment
Installing Supplemental CMU Supports; Brick Ties; Abatement: Interior Finishes Work and Miscellaneous Sealant Installation	\$166,172.24

NOTE: The Alternate Proposal must be accepted and performed concurrently with the Base Proposal. Completing both scopes during a single mobilization eliminates the need for a second mobilization/demobilization and results in a cost savings that is reflected in the pricing.

Sincerely,
WEATHERPROOFING TECHNOLOGIES, INC.

Brian Gagne
 Brian Gagne
 Construction Manager

CC: Zach Tiech, Tremco
 Kevin Butler, Tremco
 Sarah Butler, Tremco

Gaetano Mastroianni, WTI
 Kevin Horchy, WTI
 Eiaonge “Ong” Vue, WTI

This proposal is valid for thirty (30) days and does not include taxes.

Services requested beyond the above scope of work shall be considered additional services. Separate or multiple cost opinions, if requested, shall be prepared at additional cost.

This proposal is an offer by WTI to provide the Scope of Work set forth above to the Customer on the terms and conditions set forth herein and in WTI’s standard terms and conditions (a copy of which may be obtained at <http://www.tremcoroofing.com/fileshare/terms/TandCWTI.pdf>), which are hereby incorporated by reference (together, the “Terms and Conditions”). The Terms and Conditions will govern the Work to the exclusion of any other or different terms, including in any customer purchase order, unless otherwise expressly agreed in writing pursuant to a Master Agreement or similar contract with Customer signed by an authorized representative of WTI. Any Performance and Payment Bonds issued for associated repair work are limited to performance of the repairs and one year warranty on such repairs. Bonds, if issued, do not apply to the TremCare extended service agreement. Please confirm your acceptance by return e-mail to the representative identified below. Upon receipt of acceptance, WTI will process your order and promptly begin the Scope of Work.