

ORINDA UNION SCHOOL DISTRICT

8 Altarinda Rd.
Orinda, CA 94563-2603

Phone: (925) 254-4901

SchoolWorks, Inc.

8700 Auburn Folsom Rd, 200
Granite Bay, CA 95746

Phone: 916-733-0402

2025/26 DEMOGRAPHICS AND ENROLLMENT PROJECTIONS

FEBRUARY 2026



DRAFT

TABLE OF CONTENTS

	Page
EXECUTIVE SUMMARY	1
INTRODUCTION.....	3
METHODOLOGY	4
DISTRICT BOUNDARIES.....	6
HISTORIC BIRTH RATES.....	8
CLASSROOM COUNTS AND CAPACITY	14
SCHOOL PROJECTIONS.....	15
SCHOOL FACILITY UTILIZATION	31

CHARTS

	Page
10 YEAR ENROLLMENT HISTORY AND 6 YEAR ENROLLMENT PROJECTIONS	2
KINDERGARTEN PROJECTIONS BASED ON BIRTHS.....	8
KINDERGARTEN ENROLLMENT TO BIRTH RATIO	10
TK PROJECTIONS BASED ON BIRTHS	11
TK/K ENROLLMENT PLANNING	11
COHORT CHANGE SINCE KINDERGARTEN	12
HISTORIC ENROLLMENT AND COHORTS	13
LOADING STANDARDS.....	15
CAPACITY & PROJECTED ENROLLMENT	
DEL REY ELEM.....	17
GLORIETTA ELEM.....	19
SLEEPY HOLLOW ELEM.....	21
WAGNER RANCH ELEM.....	23
ORINDA INTERMEDIATE.....	25
STUDENT ATTENDANCE MATRIX.....	26
STUDENT RESIDENTS & ENROLLMENT.....	27
10 YEAR ENROLLMENT HISTORY AND 6 YEAR ENROLLMENT PROJECTIONS.....	28
ENROLLMENT PROJECTION SUMMARY BY GRADE	29
ENROLLMENT PROJECTION SUMMARY BY SCHOOL	29
ENROLLMENT PROJECTIONS BY SCHOOL AND GRADE.....	30
SCHOOL FACILITY UTILIZATION	31

MAPS

	Page
DISTRICT MAP WITH STUDENT RESIDENTIAL LOCATIONS	6
SCHOOL LOCATIONS AND ELEMENTARY BOUNDARIES.....	7
ZIP CODE MAP	9
SCHOOL BOUNDARY MAPS	
DEL REY ELEM.....	16
GLORIETTA ELEM.....	18
SLEEPY HOLLOW ELEM.....	20
WAGNER RANCH ELEM.....	22
ORINDA INTERMEDIATE.....	24
SCHOOL FACILITY UTILIZATION – ELEMENTARY SCHOOLS	32

Orinda Union School District

2025/26 Demographics and Enrollment Projections

EXECUTIVE SUMMARY

Orinda Union School District consists of four elementary schools and one intermediate school. Orinda Union School District had a stable enrollment from 2,538 students during the 2016/17 school year to an enrollment of 2,562 in 2019/20, declined to 2,471 students in 2020/21, and has since been growing to a current enrollment of 2,711 students.

Orinda Union School District is projected to grow in enrollment by 1.40% (or 38 students) for the 2026/27 school year. The District is projected to have a stable enrollment over the next six years, with a projected 2,745 students in the 2031/32 school year. This is a total growth of 34 students, which is an increase of 1.25%.

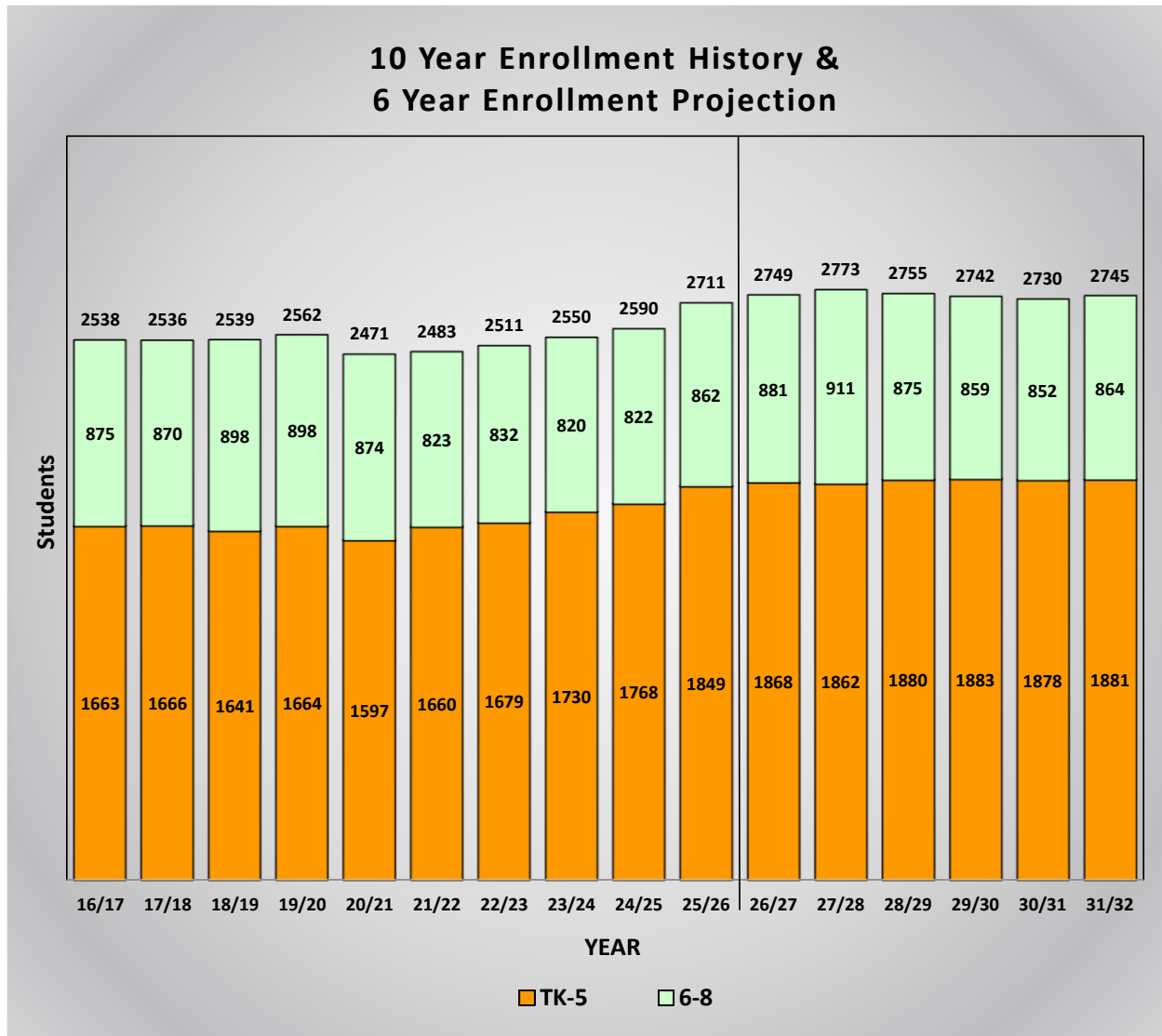
Based on current District loading standards and classroom space, the District has a net classroom capacity of 3,062 students, and a current enrollment of 2,711 students. This gives the District a current utilization factor of 88.5%. The projected utilization factor in six years will be 89.6%. This assumes loading standards remain constant and no additional facilities are built or removed.

These projections assume the transfers between schools remain consistent. If changes in facilities, schedules, programs or policies are made, then the patterns may be impacted.

Orinda Union School District
 2025/26 Demographics and Enrollment Projections

Ten Year Enrollment History and Six Year Enrollment Projections

This graph shows a summary of the projections for the entire District. It shows the current enrollment for 2025/26, the historic enrollment for the past nine years, and the projected enrollment for the next six years. The end result is a total of 2,745 students in the District in 2031/32.



The Orinda Union School District had a stable enrollment from 2,538 students during the 2016/17 school year to an enrollment of 2,562 in 2019/20, declined to 2,471 students in 2020/21, and has since been growing to a current enrollment of 2,711 students.

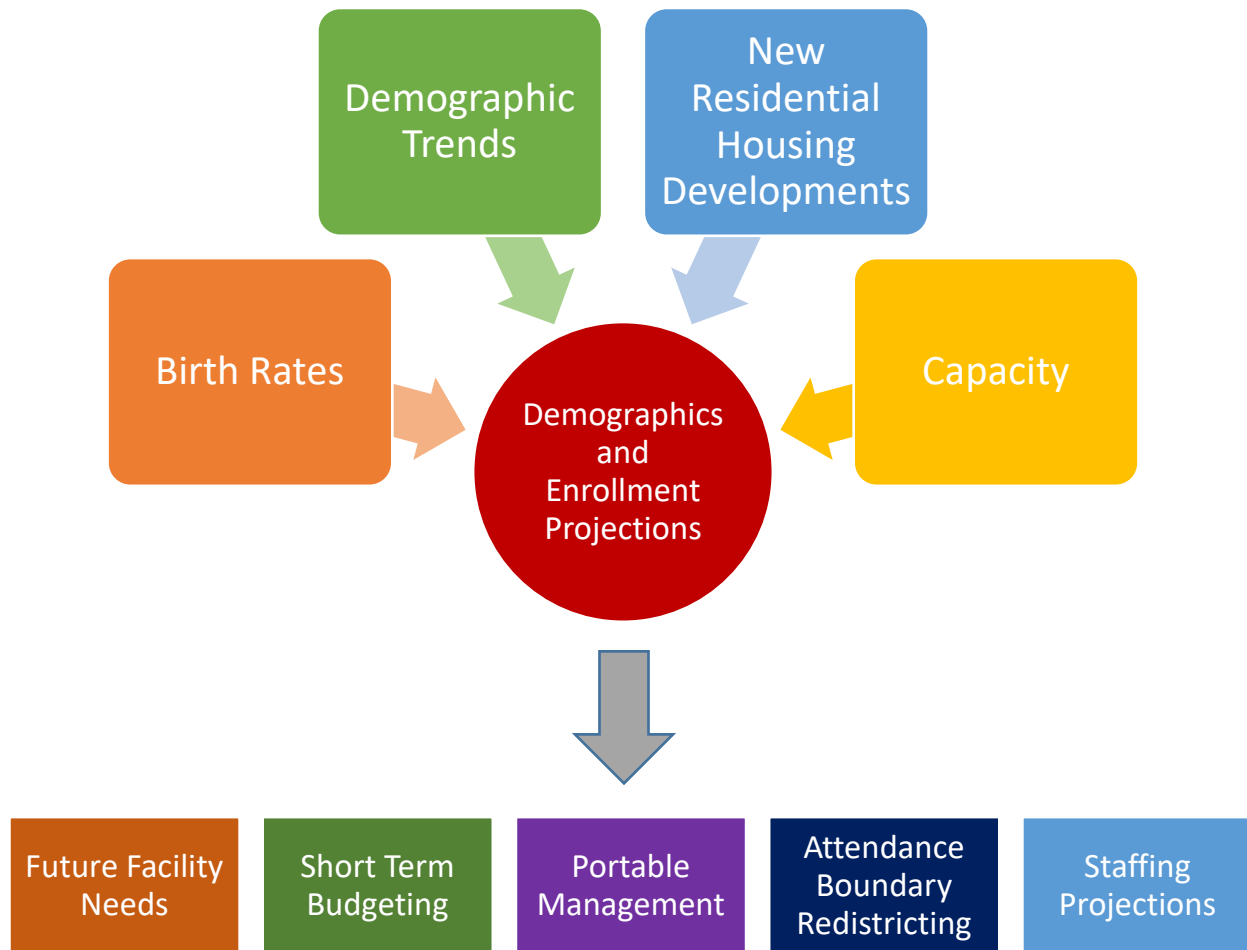
This graph is color coded by grade groupings:

Orange represents the historic and projected enrollment for the elementary school grades TK-5.
 Green represents the historic and projected enrollment for the intermediate school grades 6-8.

The entire District enrollment is shown at the top of each bar.

INTRODUCTION

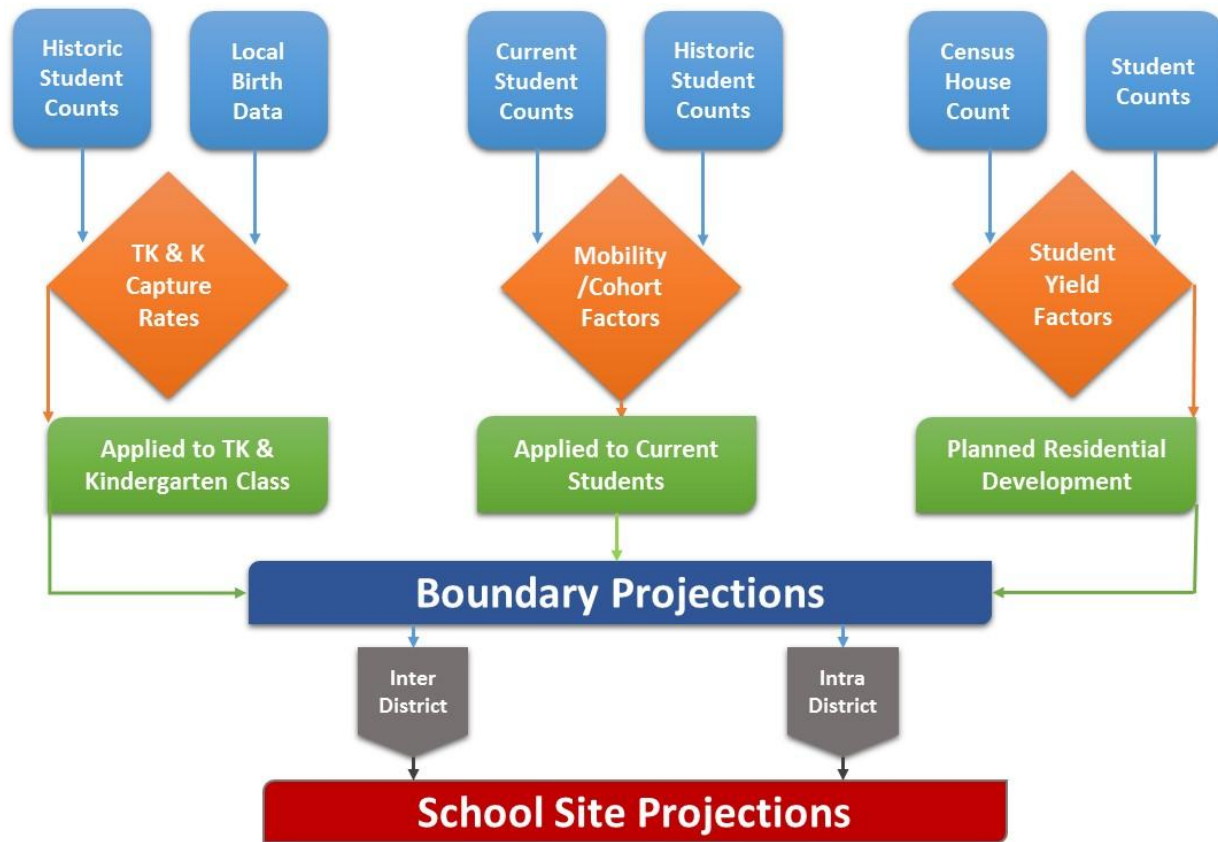
This Demographics and Enrollment Projections Study provides a comprehensive enrollment analysis for the Orinda Union School District. The district-wide and school-specific enrollment projections are meant to serve as a planning tool to help with both long- and short-term planning. Demographic Studies examine the factors that influence school enrollments, namely trends in demographics, birth rates, and housing development. They are also used as a tool to identify certain facility planning requirements such as capacity, utilization of existing facilities, planning for modernization or new construction, and attendance boundary redistricting.



This Study provides information based on the 2025/26 District enrollments and programs, local planning policies and residential development. As these factors change and timelines are adjusted, the Demographic and Enrollment Projections Study should be revised to reflect the most current information.

METHODOLOGY

The chart below summarizes the inputs to calculate the boundary and school site projections.



The **enrollment projections** for each school are generated using a State standard weighted cohort trend analysis. The basic projections are created by studying the individual geographic areas. Once the trends are analyzed for each area, the base projections are modified using the following procedures:

- a) **Birth rates** are used to project future kindergarten and transitional kindergarten enrollment. It is assumed if the births indicate there was an increase of 4% one year, then there will be a corresponding 4% increase in the kindergarten class five years later or the transitional kindergarten class four years later.
- b) **New Housing Development** rates and **yield rates** are compared to the historical impact of development, and if the future projections exceed the historical values, the projections are augmented accordingly.
- c) **Inter-District student** counts are not included in the base geographic trend analysis since these students reside outside of the District. Therefore, the current number of students-per-school and students-per-grade are added to the base projections.

Orinda Union School District

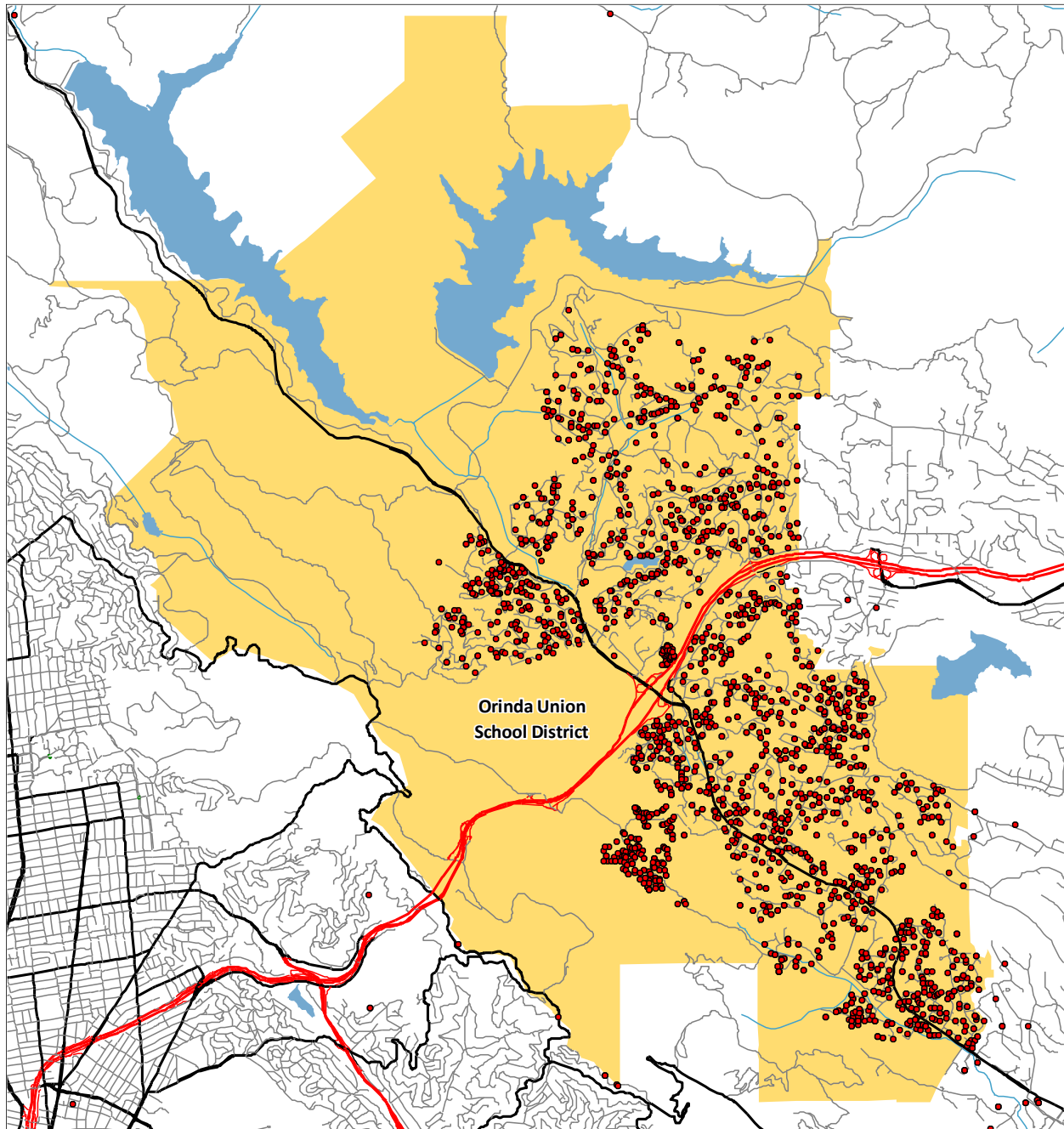
2025/26 Demographics and Enrollment Projections

- d) **Intra-District students** are those who transfer from one school to another. The number of students transferring into and out of each school are calculated and used to determine the difference between the projections for students living in each attendance area versus those that are projected to attend the school.
- e) The projections for **special education students** and **alternative programs** are created by assuming those programs typically serve a percentage of the total District population. Therefore, as the District grows or declines, the enrollment in those programs would increase or decrease accordingly.
- f) **Cohort Trend Analysis:** The number of students living in the boundary are used to generate the cohort factors. The annual trends over the past three years were analyzed and the average cohort was calculated with the current year weighted 50%, the prior year 33.3% and the last year 16.7%. This gives the current trends more value in determining the projections. Those cohorts are then used to determine the students who will be residing in each attendance area for the following years.

Neighborhood School Attendance Area Analysis: Each school attendance boundary is input into our GIS (Geographic Information Systems) Software. Students are counted in each of the attendance area boundaries based on their residential address and can be studied to view optimum and balanced utilizations. Attendance pattern maps for each individual boundary will analyze impacts of intra-district transfers from within the district boundary, as well as inter-district transfers from neighboring school districts.

DISTRICT BOUNDARIES

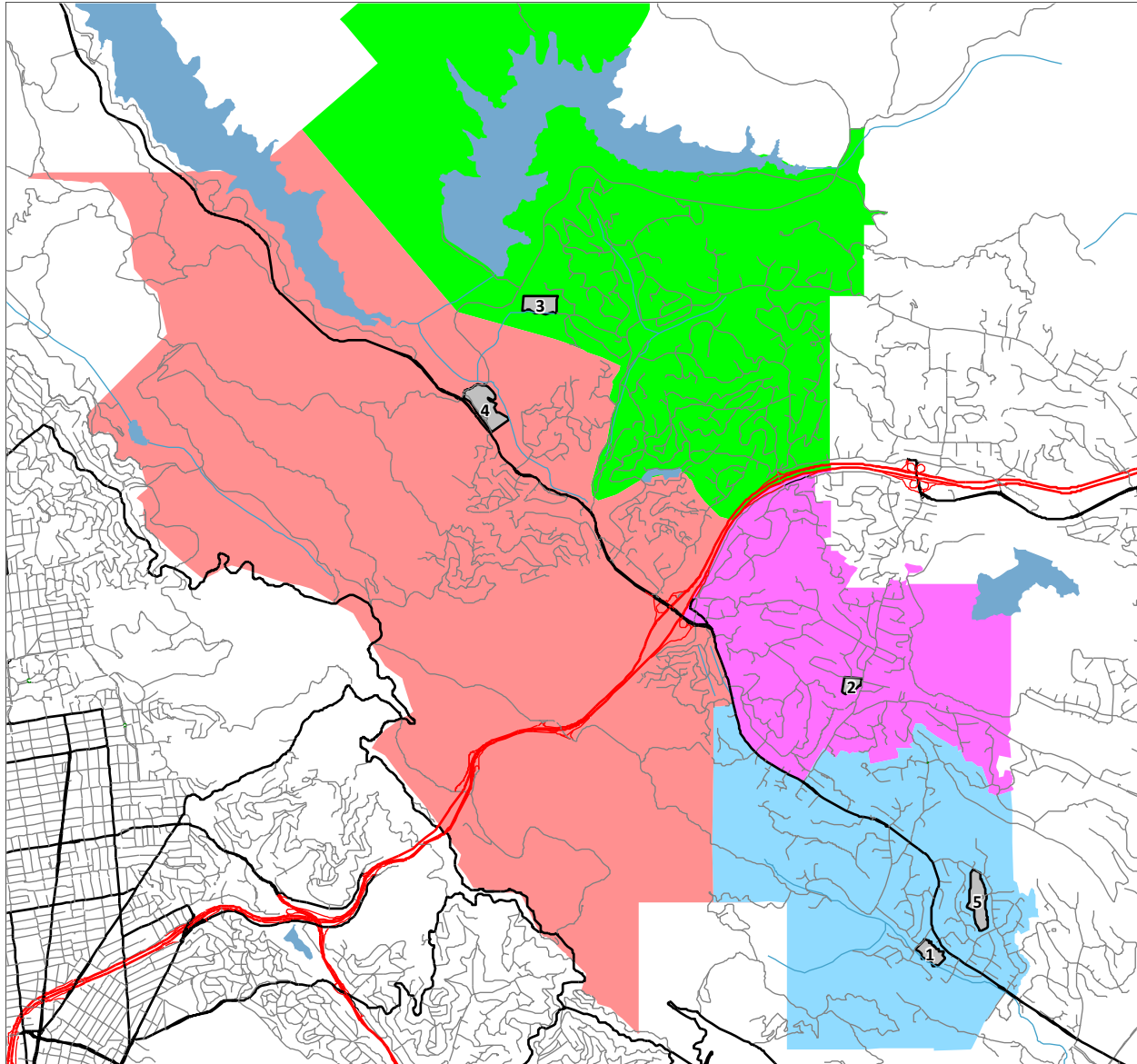
District Map with Student Residential Locations



This map shows the District boundary along with the location of each student based on their residential address. This geographic data is the foundation for our demographic analysis. Any red dots outside the District boundary will represent students attending one of the District schools or programs but have a residence outside the District. This map also identifies different areas of student population density.

Orinda Union School District
2025/26 Demographics and Enrollment Projections

School Locations and Elementary Boundaries

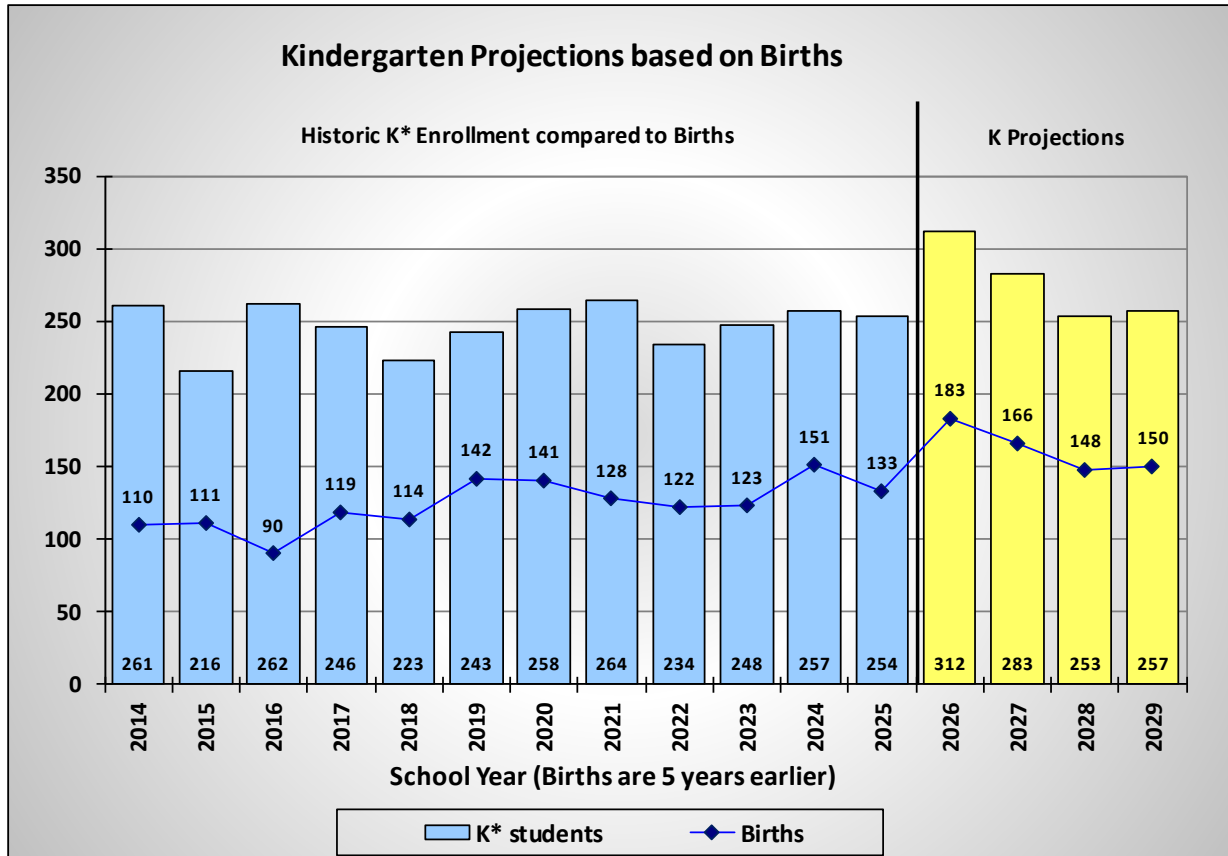


<u>Id</u>	<u>School</u>	<u>Grades</u>	<u>Id</u>	<u>School</u>	<u>Grades</u>
1	Del Rey Elementary	TK-5	4	Wagner Ranch Elementary	TK-5
2	Glorietta Elementary	TK-5	5	Orinda Intermediate	6-8
3	Sleepy Hollow Elementary	TK-5			

Orinda Union School District elementary boundaries are shown in color shaded areas.

HISTORIC BIRTH RATES

The following section is an analysis of the number of births in the Orinda Union School District. The number of births are compiled by zip code regions and provided by the Department of Health. The zip code areas do not exactly match the District boundaries and therefore the zip codes 94563, which is in the District, was used for this analysis.

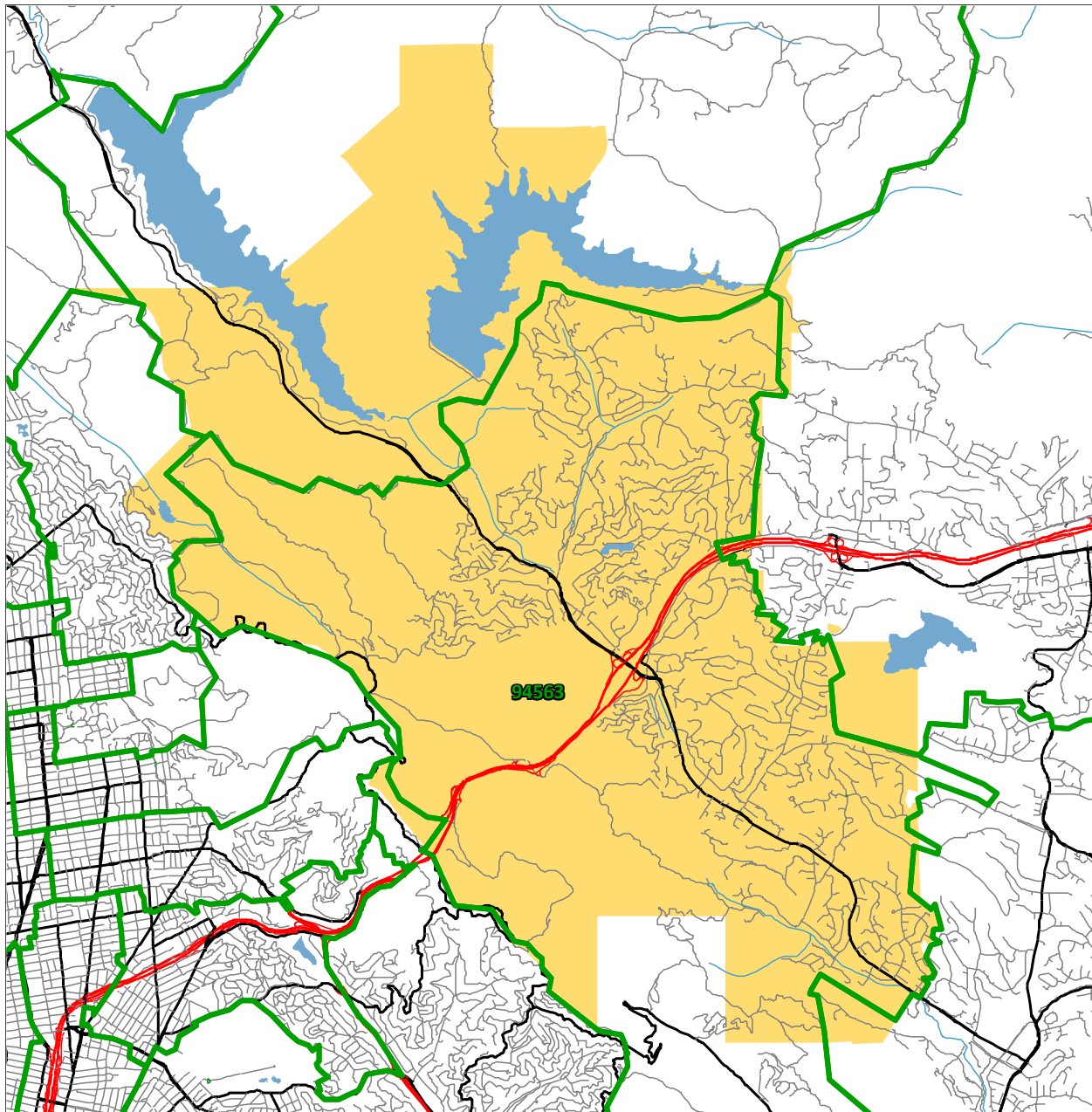


*Kindergarten Totals may include some Transitional Kindergarten students for some of the past years to more accurately correlate a 12-month period of births to a 12-month period of enrollment.

The above figure illustrates the correlation between births in the District area and the number of kindergarten students attending Orinda Union schools five years later. The number of births between 2009 and 2020 has averaged about 124 per year. The recent birth rates over the past four years (2021 to 2024), which will generate the kindergarten classes for the next four years (2026 to 2029), have been between 148 and 183. We have assumed a kindergarten capture rate of 170% for the projections.

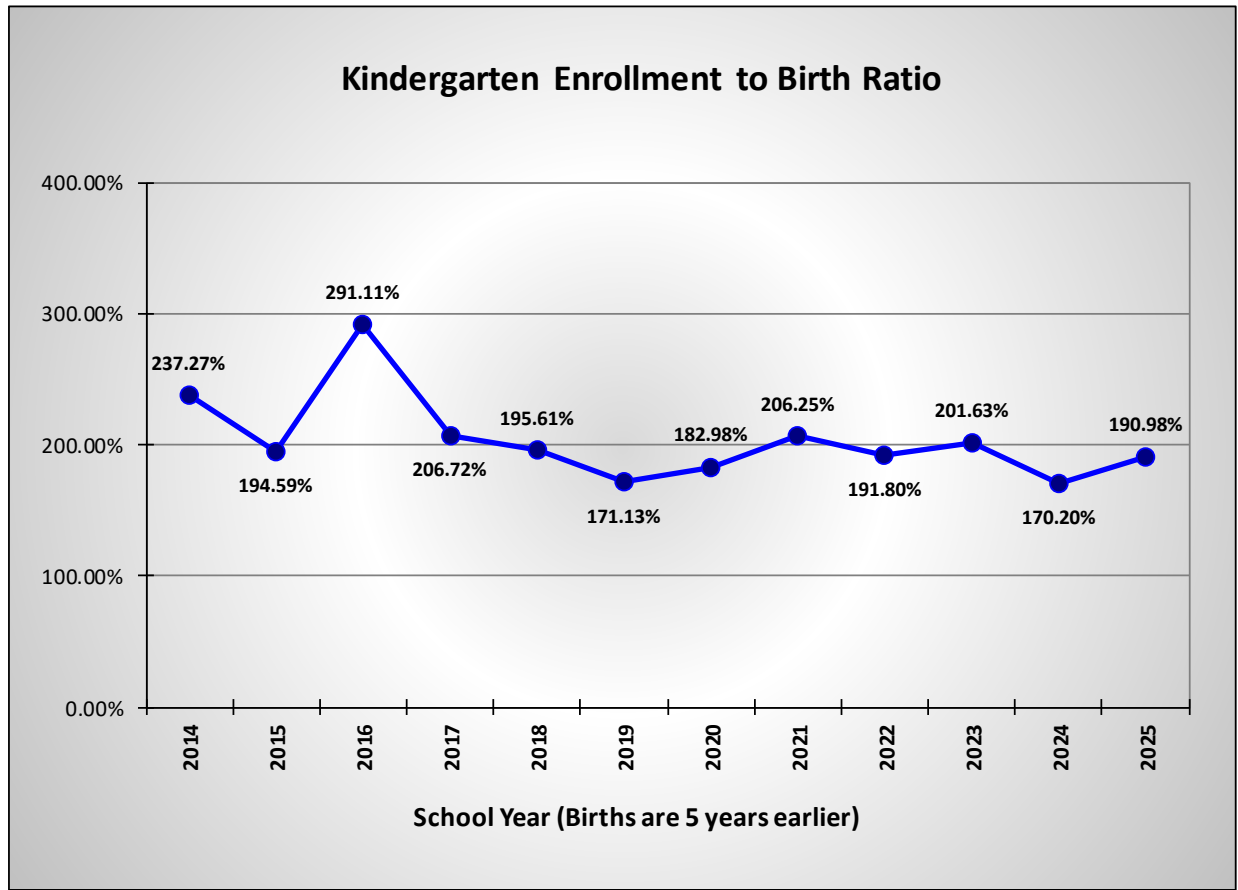
Orinda Union School District
2025/26 Demographics and Enrollment Projections

Zip Code Map



The above map shows the comparison between the District boundaries and the zip codes. The 94563 zip code covers the majority of the District.

Historic Kindergarten Capture Rates



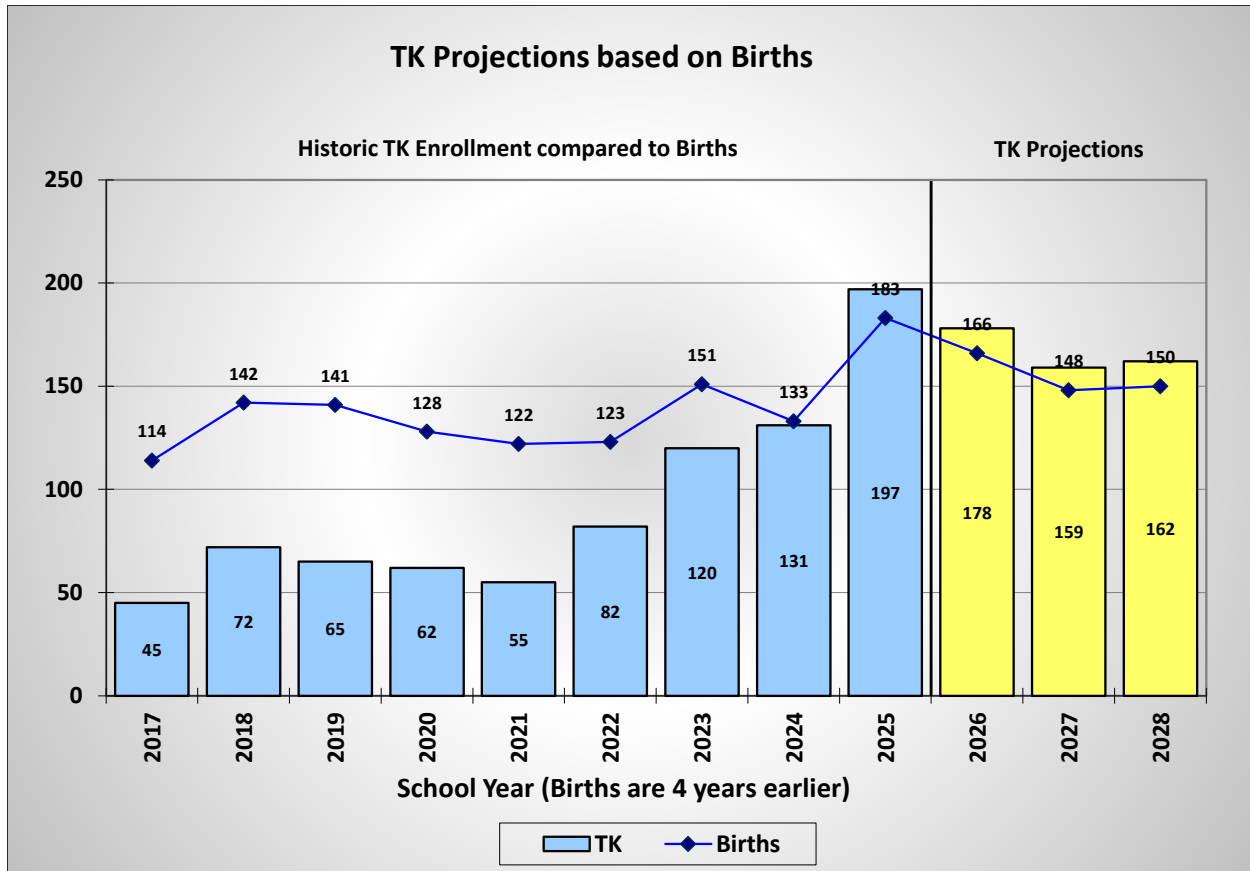
This figure shows the kindergarten capture rates for the past 12 years. Since the birth data is derived from zip code areas, which do not exactly match with the District boundaries, the capture rate also accounts for differences in the coverage areas. Low capture rates are common when a district serves only a portion of a large zip code area. A large capture rate is possible when families move into the area after the children were born, but before they arrived for kindergarten. Overall, the District has had a stable capture rate with a 12 year average of 203.36%.

Orinda Union School District

2025/26 Demographics and Enrollment Projections

Transitional Kindergarten

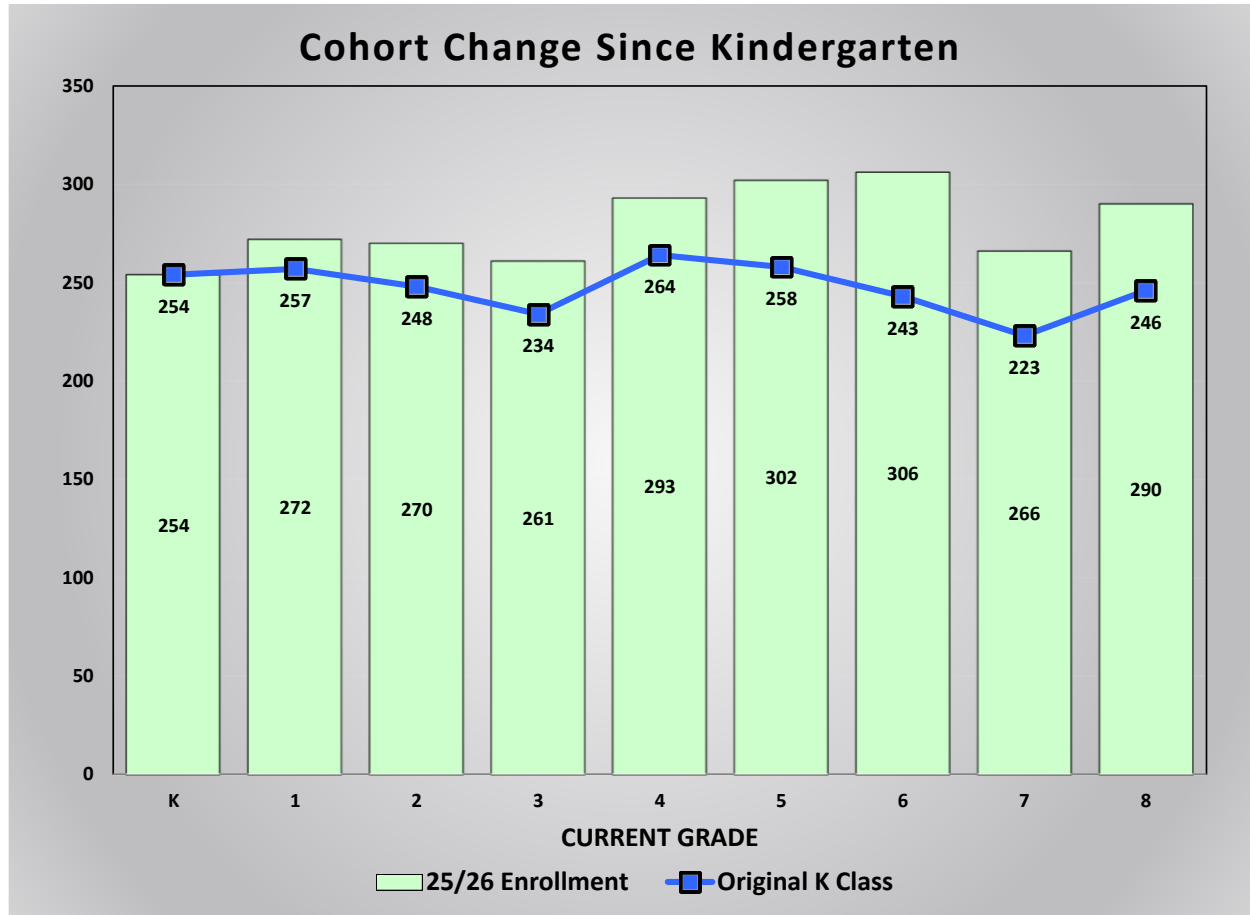
The Transitional Kindergarten (TK) program started in 2012 to provide an extra year for young children to get ready for kindergarten. Currently, the TK program allows all four year-olds who will turn five between September 1 and August 31. Some districts allow parents with children just outside that window to also participate in the program. Even though the window for the TK program is a full 12 months, participation in the TK program is typically less than 90% of the total kindergarten enrollment.



TK/K Projection Summary by School

Orinda Union School District TK/K Enrollment Planning								
	26/27		27/28		28/29		29/30	
<u>School</u>	<u>TK</u>	<u>K</u>	<u>TK</u>	<u>K</u>	<u>TK</u>	<u>K</u>	<u>TK</u>	<u>K</u>
Del Rey Elem	50	73	45	66	46	59	46	60
Glorietta Elem	49	74	44	67	45	60	45	61
Sleepy Hollow Elem	34	74	30	67	30	60	30	61
Wagner Ranch Elem	45	91	40	83	41	74	41	75
Totals	178	312	159	283	162	253	162	257

Retention Rates Since Kindergarten



This chart compares the original kindergarten class size to the current enrollment for each grade. For example, the current 6th grade class has 306 students and six years ago the kindergarten class had 243 students. Overall the class sizes have increased since kindergarten.

Orinda Union School District

2025/26 Demographics and Enrollment Projections

Historic Enrollment and Trends

Orinda Union School District Historic Enrollment and Cohorts								
Grade	CalPADS Enrollment				Historic Cohorts			Weighted Average
	22/23	23/24	24/25	25/26	22 to 23	23 to 24	24 to 25	
TK	82	120	131	197	38	11	66	43.0
K	234	248	257	254	14	9	-3	3.8
1	272	243	263	272	9	15	15	14.0
2	281	280	250	270	8	7	7	7.2
3	282	287	287	261	6	7	11	8.8
4	256	285	292	293	3	5	6	5.2
5	272	267	288	302	11	3	10	7.8
6	277	269	260	306	-3	-7	18	6.2
7	269	282	274	266	5	5	6	5.5
8	286	269	288	290	0	6	16	10.0
Totals	2,511	2,550	2,590	2,711	9.1	6.1	15.2	11.2
Annual Change:		39	40	121				

This chart shows the enrollment by grade level over the past four years. The cohort values were calculated for each grade and each year, along with the weighted average for each grade. A positive cohort value indicates that grade is expected to have more students than the previous grade last year. A negative value would mean that the grade has fewer students compared to the previous grade last year.

In general, a positive cohort is representative of growth and a negative cohort indicates a decline in enrollment. There are some exceptions. First grade usually has a positive cohort, as there are some students that do not attend kindergarten at public schools but arrive in first grade.

Another important item to notice is the current breakdown by grade level of the student population. Comparing the number of students in the lower grades to the upper grades can indicate potential increases or decreases in future enrollments. Also, if there is a large class or a small class, it will slowly cause a ripple in the enrollments as it advances a grade each year.

Finally, the annual change at the bottom of this chart indicates the net impact of the changes in enrollment over the past few years.

CLASSROOM COUNTS AND CAPACITY

It is important to understand that capacity and classroom counts may be viewed different ways for different purposes. The State School Facilities Program (SFP) considers all available teaching stations excluding physical education facilities and core facilities (e.g., libraries, multipurpose rooms, and administrative spaces), as part of the site capacity when calculating eligibility for new construction or modernization funding. The State also has its own loading standards per classroom as part of the eligibility determinations.

Another method for calculating capacity and number of classrooms is based on local District standards of class size and a definition of what is considered a full day teaching station. The District may set aside several classroom spaces defined by the SFP for specialized programs or pull-out spaces.

The classroom counts and capacities defined in this Demographics and Enrollment Projections Study represent the rooms that have been identified by Orinda Union School District administration as designated fulltime teaching stations. This count is a net count and may not take into consideration other rooms which could be used as fulltime teaching stations but are needed for other programs offered by the District.

The classroom counts are shown for each school and are used to determine the capacity. The classroom counts represent the rooms that can be used for teaching purposes at each school site. The classroom counts may not represent the current classrooms being used, as there may be unused rooms on the school site. In some cases, there may be fewer classrooms counted than current teaching stations if some of the rooms being used were designed for other purposes but are currently being used as classrooms due to overcrowding.

SCHOOL PROJECTIONS

This Study provides a detailed analysis of student attendance patterns and enrollment for each school. This includes a boundary map illustrating that particular school’s attendance patterns along with a chart showing the projected enrollment for the next six years. These charts indicate the actual enrollment at each school over the past four years along with the projected enrollment for the next six years. In addition, the number of students living in the boundary are shown for the same time period. If there are more students attending than live in the area, then there is a net inflow. If more students live in the boundary than attend the school, then there is a net outflow.

The current capacity is shown on these charts to identify if there will be classroom space available for the students. If space is not available, then the attendance patterns will likely need to change if the additional facilities are not provided. The capacity for each school was determined by using the following loading standards for each classroom identified:

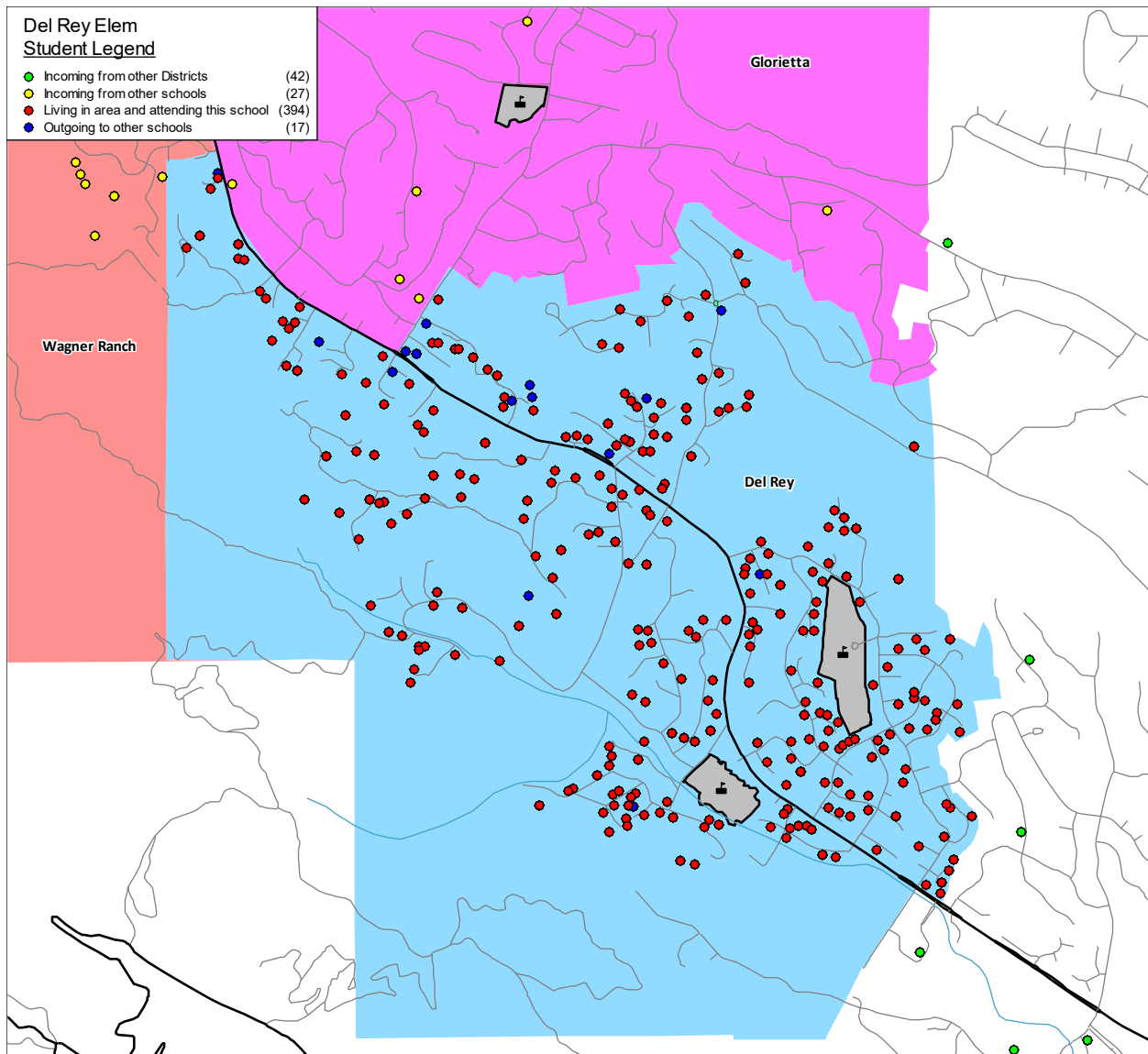
<u>Grade</u>	<u>Loading Standard</u>
TK	20
K-3	22
4-8	26

These loading standards are based on the current loading factors used this year and may change based on the level of funding for schools in the future.

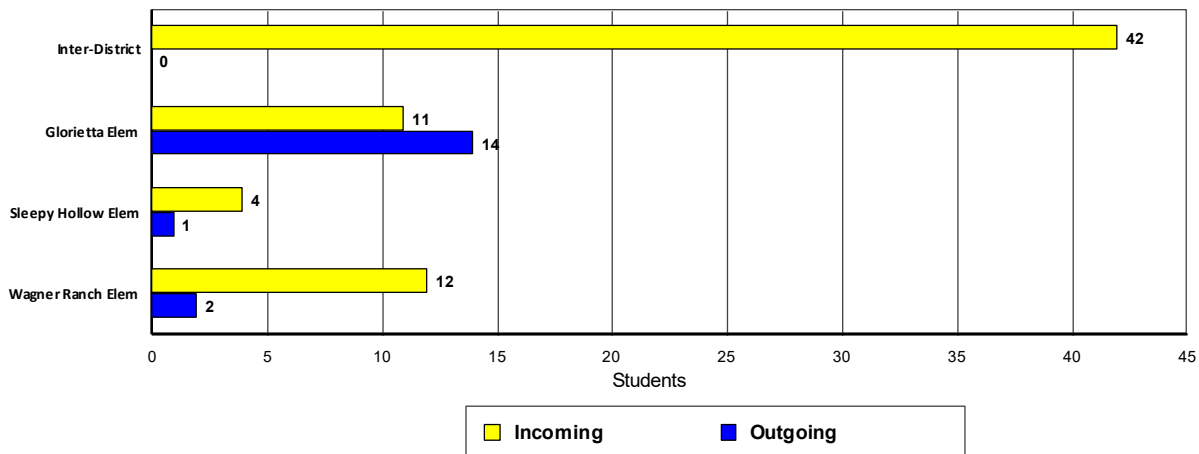
Detailed data is provided below each projection chart that shows the projected enrollment by grade for the next six years.

The Attendance Factors were determined by analyzing the current year of students to see how many Inter- and Intra-District transfers there are. Once the baseline projections are calculated for the residents in the attendance area, the Intra-District and Inter-District factors are applied to determine the projected enrollment for each school.

Orinda Union School District 2025/26 Demographics and Enrollment Projections



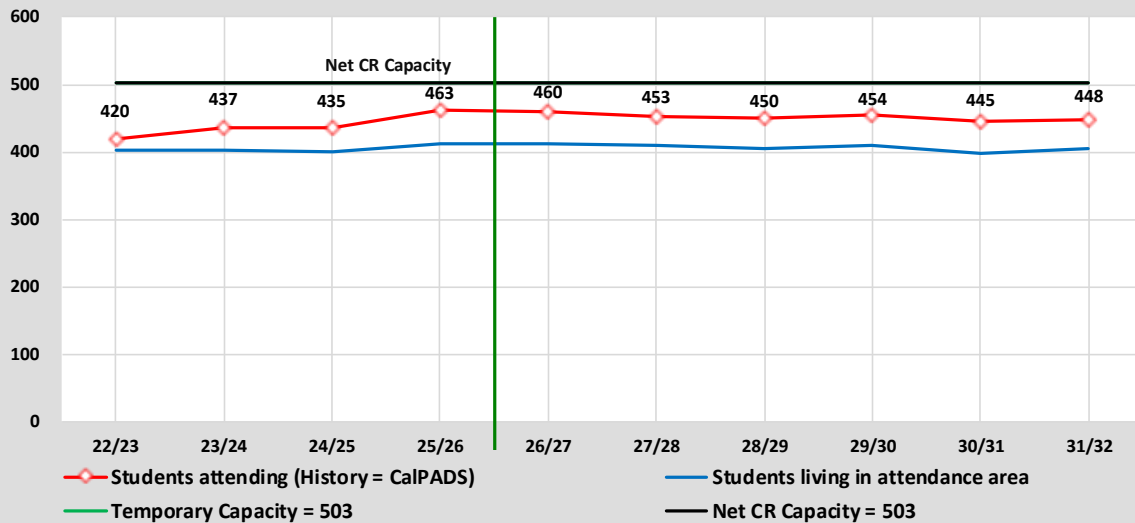
Del Rey Elem
Transfer Students



Orinda Union School District

2025/26 Demographics and Enrollment Projections

Capacity & Projected Enrollment Del Rey Elem



District Loading Standards
 Traditional School
 All Portables Loaded
 Net Classroom Count = 22
 Grades Served = TK - 5

Classroom Needs Timeline

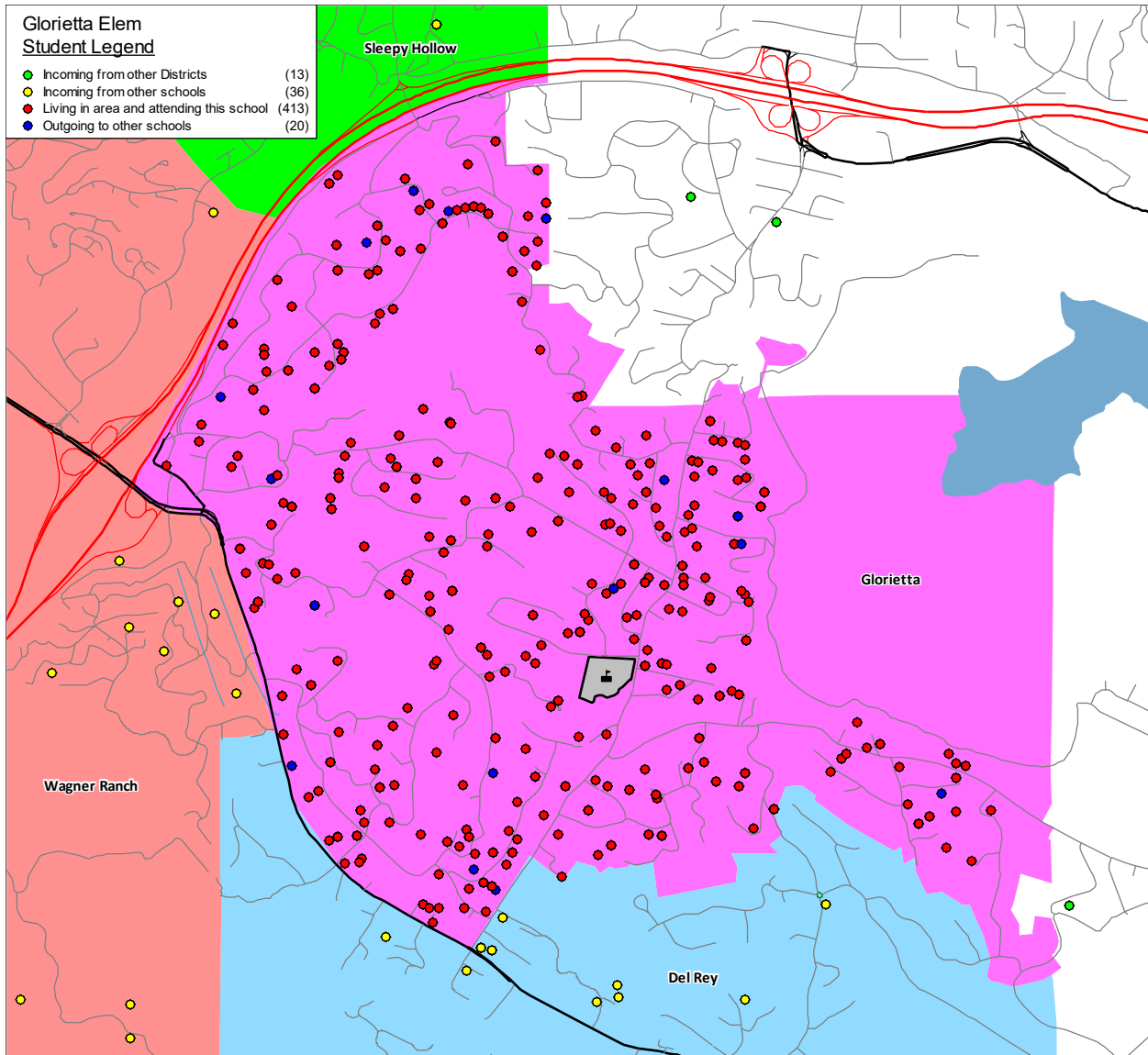
Year	Total Students*	Annual Change	Spec. Ed. Students	Net CR Capacity	New Seats Needed	Annual CR Needed	Total CR's Needed	Available Seats	Projected Housing Units
25/26	463	28	0	503	0	0	-2	40	
26/27	460	-3	0	503	0	0	-1	43	0
27/28	453	-7	0	503	0	0	-2	50	0
28/29	450	-3	0	503	0	0	-3	53	0
29/30	454	4	0	503	0	0	-3	49	0
30/31	445	-9	0	503	0	0	-2	58	0
31/32	448	3	0	503	0	0	-2	55	0

* Based on Students Attending (Squares on Graph)
 Net Classroom Count = 22

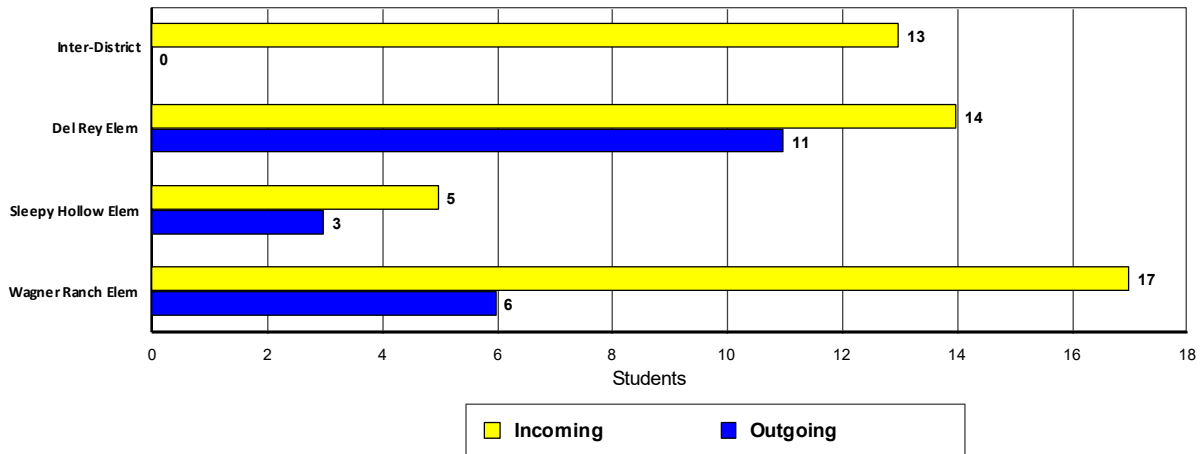
Del Rey Elem

YEAR: Grade	Current	Projected Enrollment						Cohort Average	Attendance Factors	
	25/26	26/27	27/28	28/29	29/30	30/31	31/32		Intra	Inter
T K	55	50	45	46	46	46	46	0	-1	9
K	57	73	66	59	60	60	60	0	4	6
1	70	58	74	67	60	61	61	1	2	1
2	59	72	60	76	69	62	63	2	-1	7
3	69	62	75	63	79	72	65	3	2	4
4	74	69	62	75	63	79	72	0	0	9
5	79	76	71	64	77	65	81	2	4	6
Totals	463	460	453	450	454	445	448	1.1	10	42

Orinda Union School District 2025/26 Demographics and Enrollment Projections

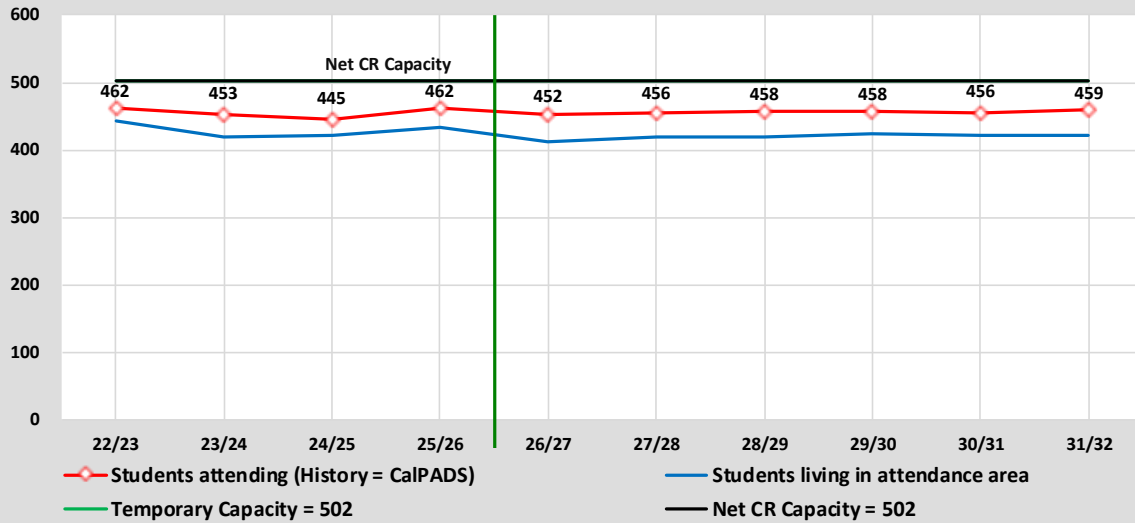


Glorietta Elem
Transfer Students



Orinda Union School District
2025/26 Demographics and Enrollment Projections

Capacity & Projected Enrollment
Glorietta Elem



District Loading Standards
 Traditional School
 All Portables Loaded
 Net Classroom Count = 22
 Grades Served = TK - 5

Classroom Needs Timeline

Year	Total Students*	Annual Change	Spec. Ed. Students	Net CR Capacity	New Seats Needed	Annual CR Needed	Total CR's Needed	Available Seats	Projected Housing Units
25/26	462	17	0	502	0	0	-2	40	
26/27	452	-10	0	502	0	0	-2	50	0
27/28	456	4	0	502	0	0	-2	46	0
28/29	458	2	0	502	0	0	-2	44	0
29/30	458	0	0	502	0	0	-2	44	0
30/31	456	-2	0	502	0	0	-2	46	0
31/32	459	3	0	502	0	0	-2	43	0

* Based on Students Attending (Squares on Graph)
 Net Classroom Count = 22

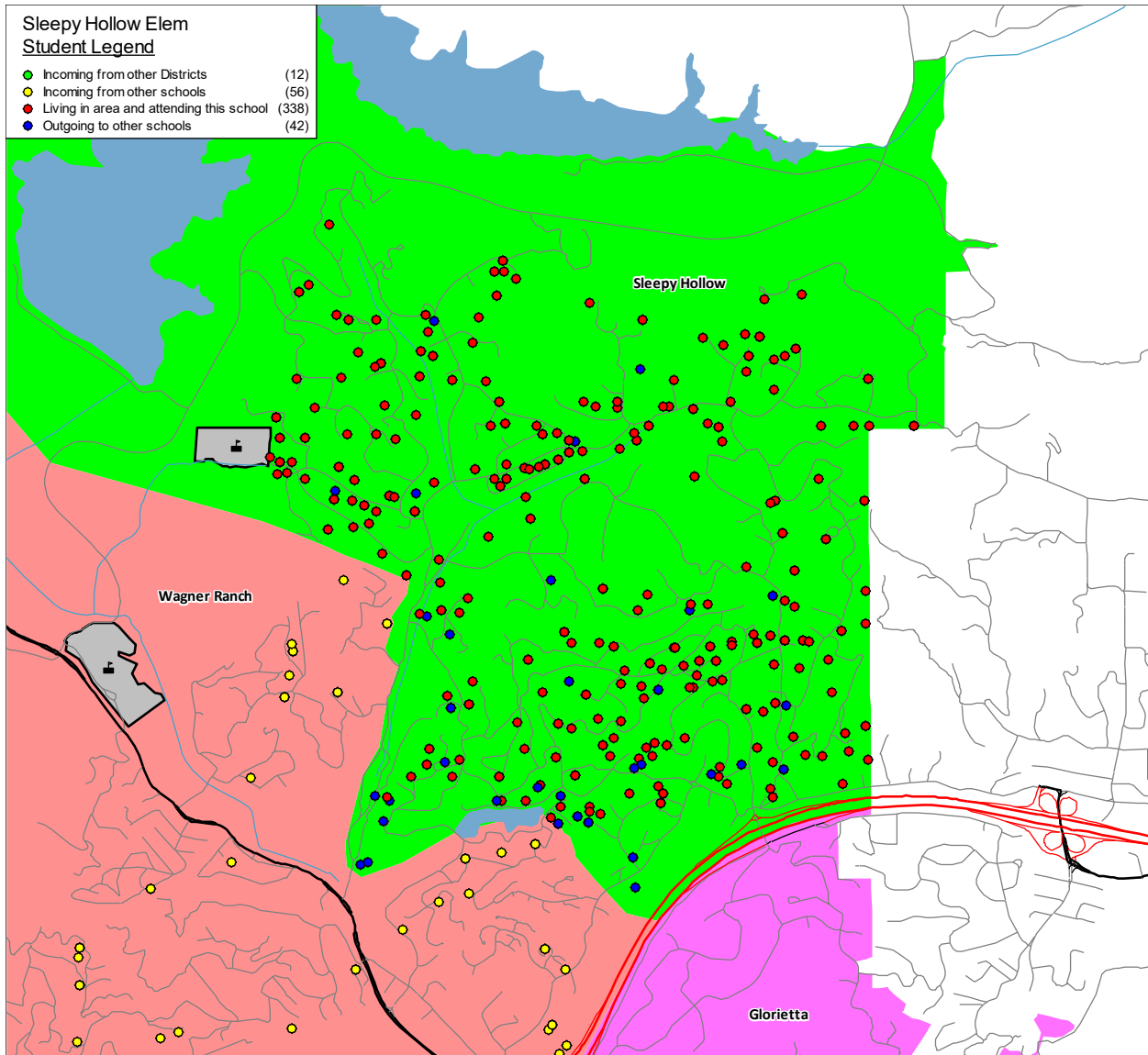
Glorietta Elem

YEAR: Grade	Current	Projected Enrollment						Cohort Average	Attendance Factors	
	25/26	26/27	27/28	28/29	29/30	30/31	31/32		Intra	Inter
T K	54	49	44	45	45	45	45	0	3	1
K	58	74	67	60	61	61	61	0	0	1
1	66	61	77	70	63	64	64	3	2	1
2	66	68	63	79	72	65	66	2	8	1
3	66	68	70	65	81	74	67	2	2	1
4	65	66	68	70	65	81	74	0	5	1
5	87	66	67	69	71	66	82	1	-4	7
Totals	462	452	456	458	458	456	459	1.1	16	13

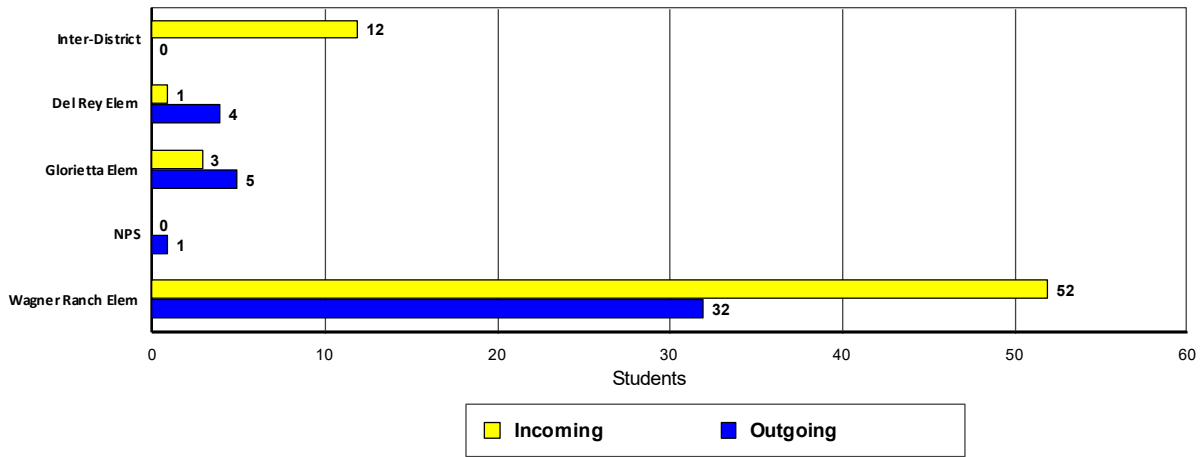


DRAFT

Orinda Union School District 2025/26 Demographics and Enrollment Projections

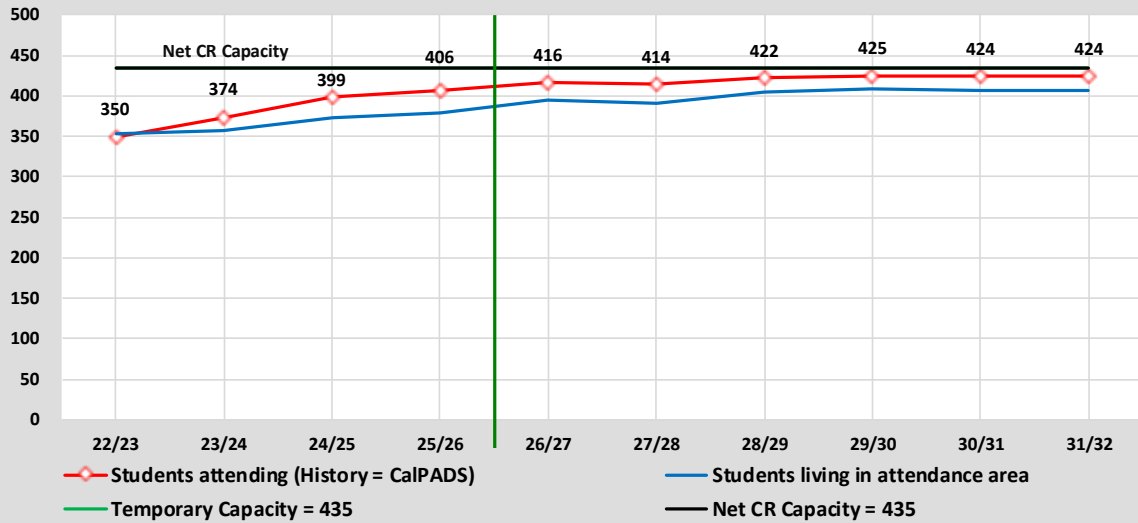


**Sleepy Hollow Elem
Transfer Students**



Orinda Union School District
2025/26 Demographics and Enrollment Projections

Capacity & Projected Enrollment
Sleepy Hollow Elem



District Loading Standards
 Traditional School
 All Portables Loaded
 Net Classroom Count = 19
 Grades Served = TK - 5

Classroom Needs Timeline

Year	Total Students*	Annual Change	Spec. Ed. Students	Net CR Capacity	New Seats Needed	Annual CR Needed	Total CR's Needed	Available Seats	Projected Housing Units
25/26	406	7	0	435	0	0	-1	29	
26/27	416	10	0	435	0	0	-1	19	0
27/28	414	-2	0	435	0	0	-1	21	0
28/29	422	8	0	435	0	0	-1	13	0
29/30	425	3	0	435	0	0	-1	10	0
30/31	424	-1	0	435	0	0	-1	11	0
31/32	424	0	0	435	0	0	0	11	0

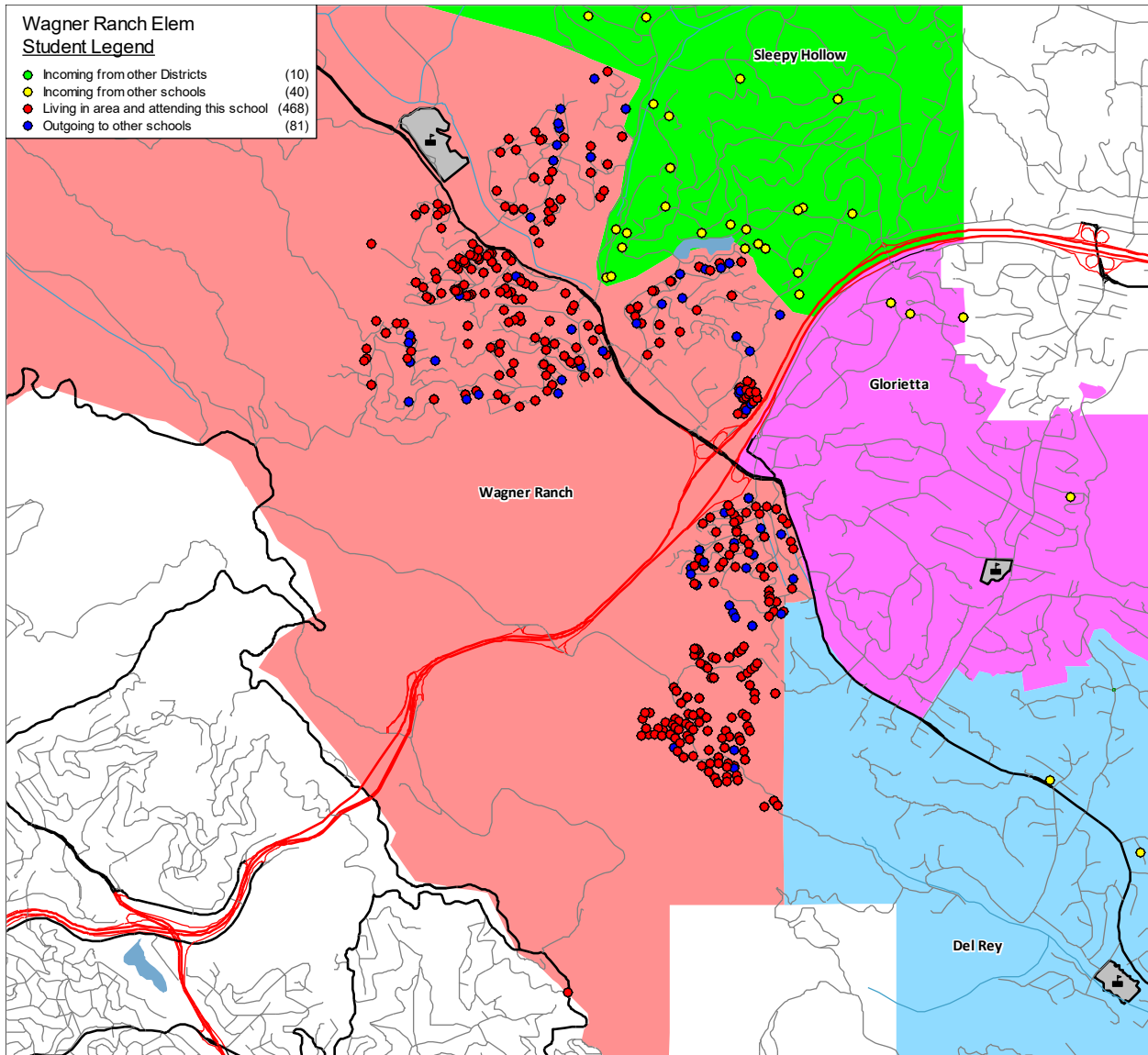
* Based on Students Attending (Squares on Graph)
 Net Classroom Count = 19

Sleepy Hollow Elem

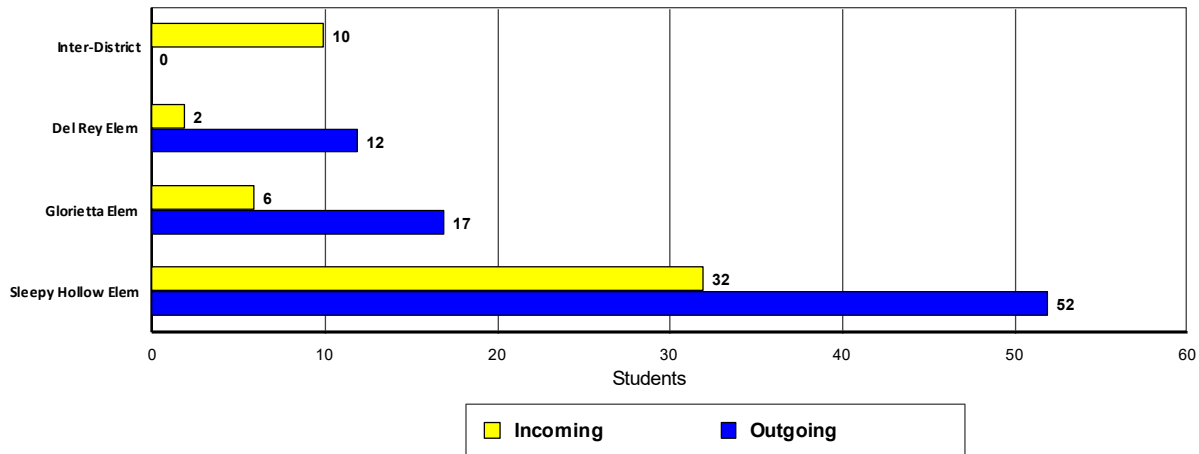
YEAR: Grade	Current	Projected Enrollment						Cohort Average	Attendance Factors	
	25/26	26/27	27/28	28/29	29/30	30/31	31/32		Intra	Inter
T K	38	34	30	30	30	30	30	0	-3	0
K	61	74	67	60	61	61	61	0	4	1
1	64	63	76	69	62	63	63	2	1	1
2	59	63	62	75	68	61	62	-1	4	2
3	54	60	64	63	76	69	62	1	3	5
4	67	54	60	64	63	76	69	0	3	0
5	63	68	55	61	65	64	77	1	2	3
Totals	406	416	414	422	425	424	424	0.4	14	12

Orinda Union School District

2025/26 Demographics and Enrollment Projections

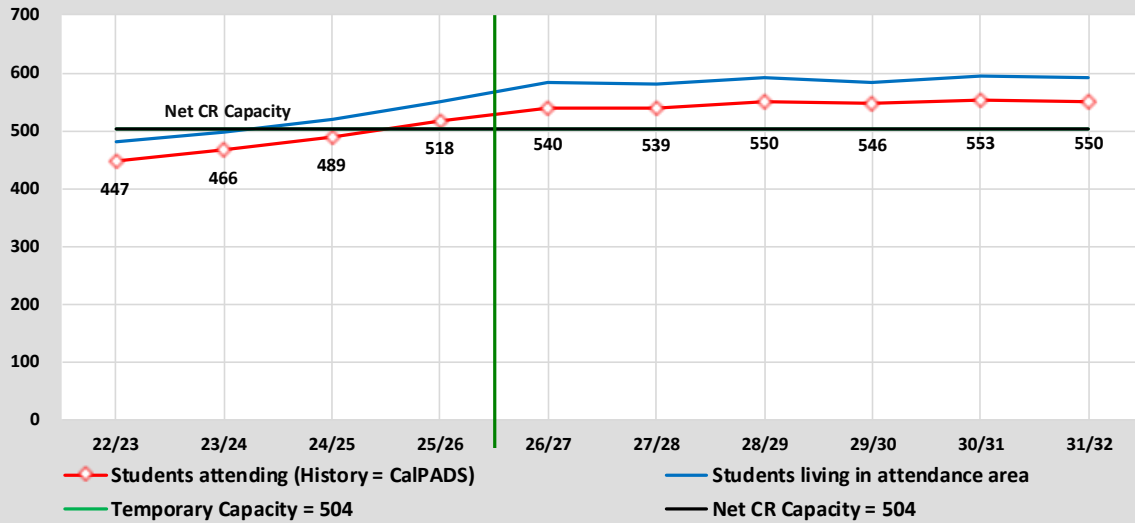


Wagner Ranch Elem
Transfer Students



Orinda Union School District
2025/26 Demographics and Enrollment Projections

Capacity & Projected Enrollment
Wagner Ranch Elem



District Loading Standards
 Traditional School
 All Portables Loaded
 Net Classroom Count = 22
 Grades Served = TK - 5

Classroom Needs Timeline

Year	Total Students*	Annual Change	Spec. Ed. Students	Net CR Capacity	New Seats Needed	Annual CR Needed	Total CR's Needed	Available Seats	Projected Housing Units
25/26	518	29	0	504	14	0	0	0	
26/27	540	22	0	504	36	1	1	0	0
27/28	539	-1	0	504	35	1	2	0	0
28/29	550	11	0	504	46	0	1	0	0
29/30	546	-4	0	504	42	0	1	0	0
30/31	553	7	0	504	49	0	1	0	0
31/32	550	-3	0	504	46	0	1	0	0

* Based on Students Attending (Squares on Graph)
 Net Classroom Count = 22

Wagner Ranch Elem

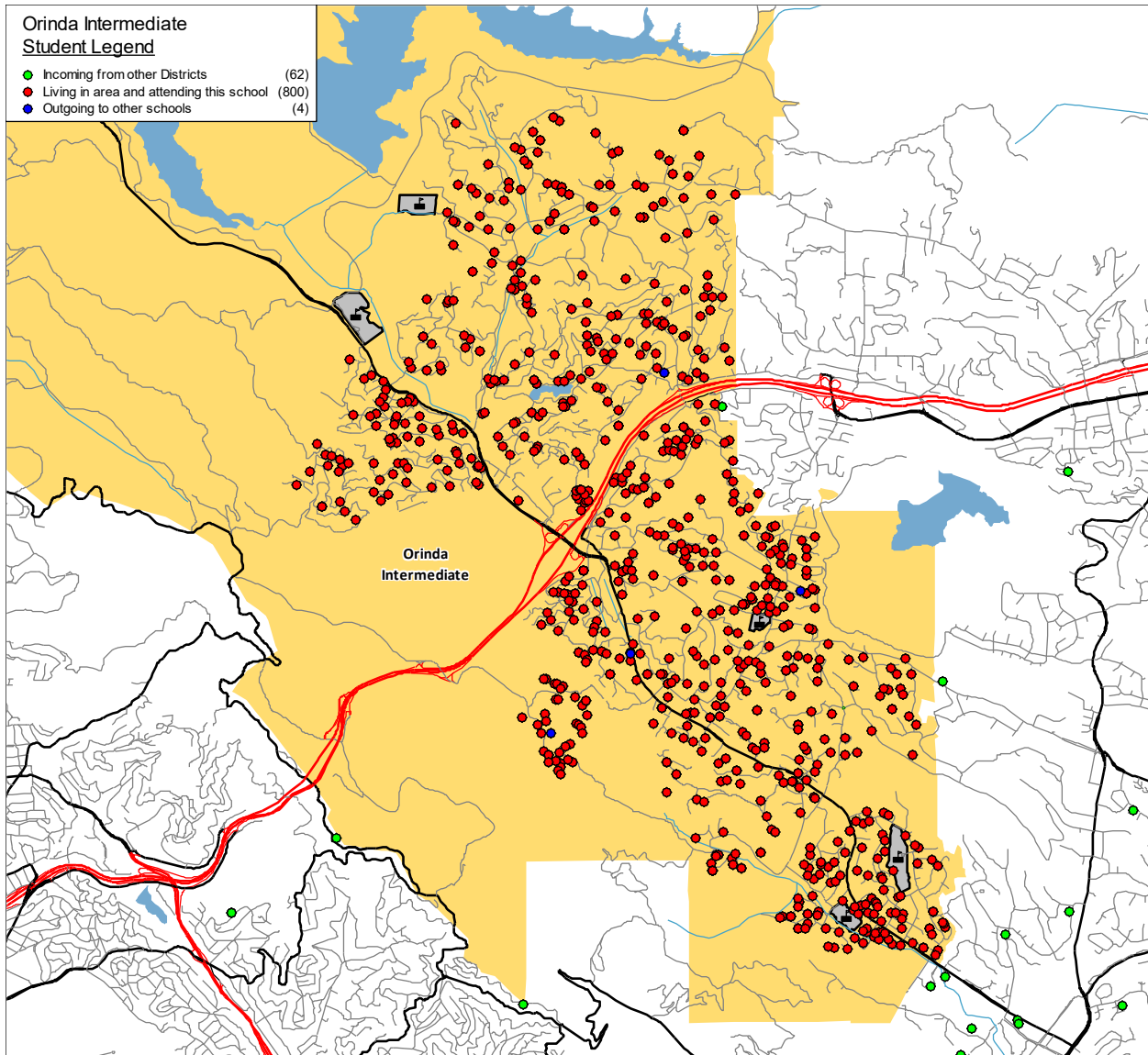
YEAR: Grade	Current	Projected Enrollment						Cohort Average	Attendance Factors	
	25/26	26/27	27/28	28/29	29/30	30/31	31/32		Intra	Inter
T K	50	45	40	41	41	41	41	0	1	2
K	78	91	83	74	75	75	75	0	-9	3
1	72	82	95	87	78	79	79	4	-5	2
2	86	75	85	98	90	81	82	3	-11	1
3	72	87	76	86	99	91	82	1	-7	0
4	87	72	87	76	86	99	91	0	-8	0
5	73	88	73	88	77	87	100	1	-2	2
Totals	518	540	539	550	546	553	550	1.3	-41	10



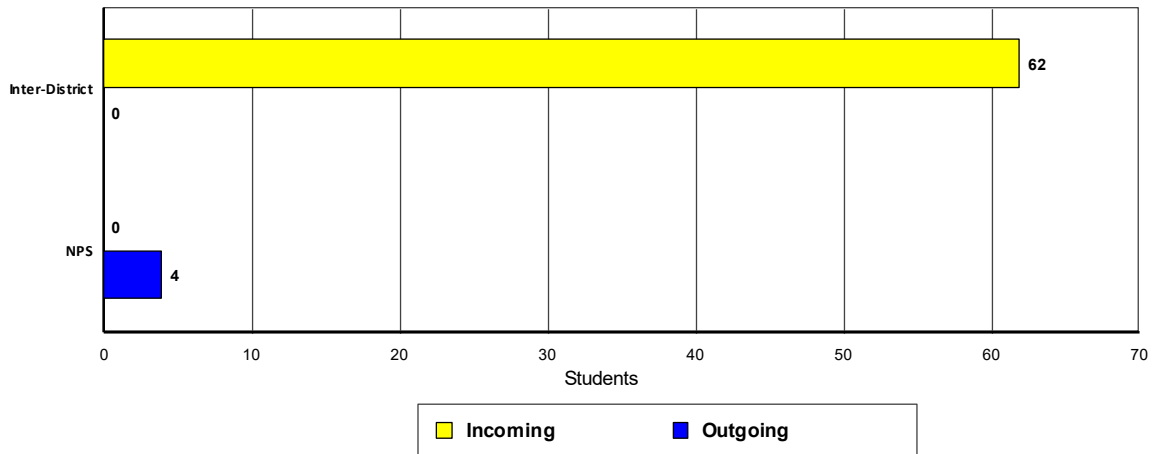
DRAFT

Orinda Union School District

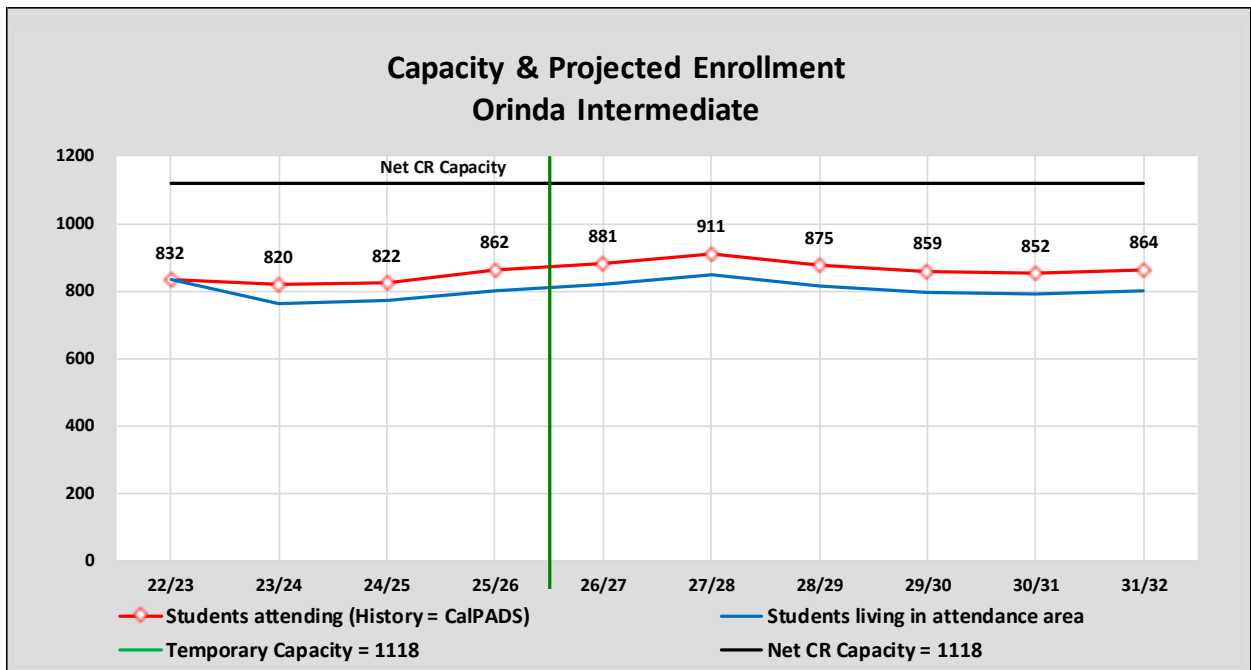
2025/26 Demographics and Enrollment Projections



Orinda Intermediate
Transfer Students



Orinda Union School District
2025/26 Demographics and Enrollment Projections



District Loading Standards
 Traditional School
 All Portables Loaded
 Net Classroom Count = 43
 Grades Served = 6 - 8

Classroom Needs Timeline

Year	Total Students*	Annual Change	Spec. Ed. Students	Net CR Capacity	New Seats Needed	Annual CR Needed	Total CR's Needed	Available Seats	Projected Housing Units
25/26	862	40	0	1118	0	0	-10	256	
26/27	881	19	0	1118	0	0	-9	237	0
27/28	911	30	0	1118	0	0	-8	207	0
28/29	875	-36	0	1118	0	0	-10	243	0
29/30	859	-16	0	1118	0	0	-10	259	0
30/31	852	-7	0	1118	0	0	-11	266	0
31/32	864	12	0	1118	0	0	-10	254	0

* Based on Students Attending (Squares on Graph)
 Net Classroom Count = 43

Orinda Intermediate										
YEAR:	Current	Projected Enrollment						Cohort Average	Attendance Factors	
	25/26	26/27	27/28	28/29	29/30	30/31	31/32		Intra	Inter
Grade										
6	306	300	303	270	284	296	282	-3	0	20
7	266	299	293	296	263	277	289	0	0	14
8	290	282	315	309	312	279	293	3	0	28
Totals	862	881	911	875	859	852	864	0.0	0	62



DRAFT

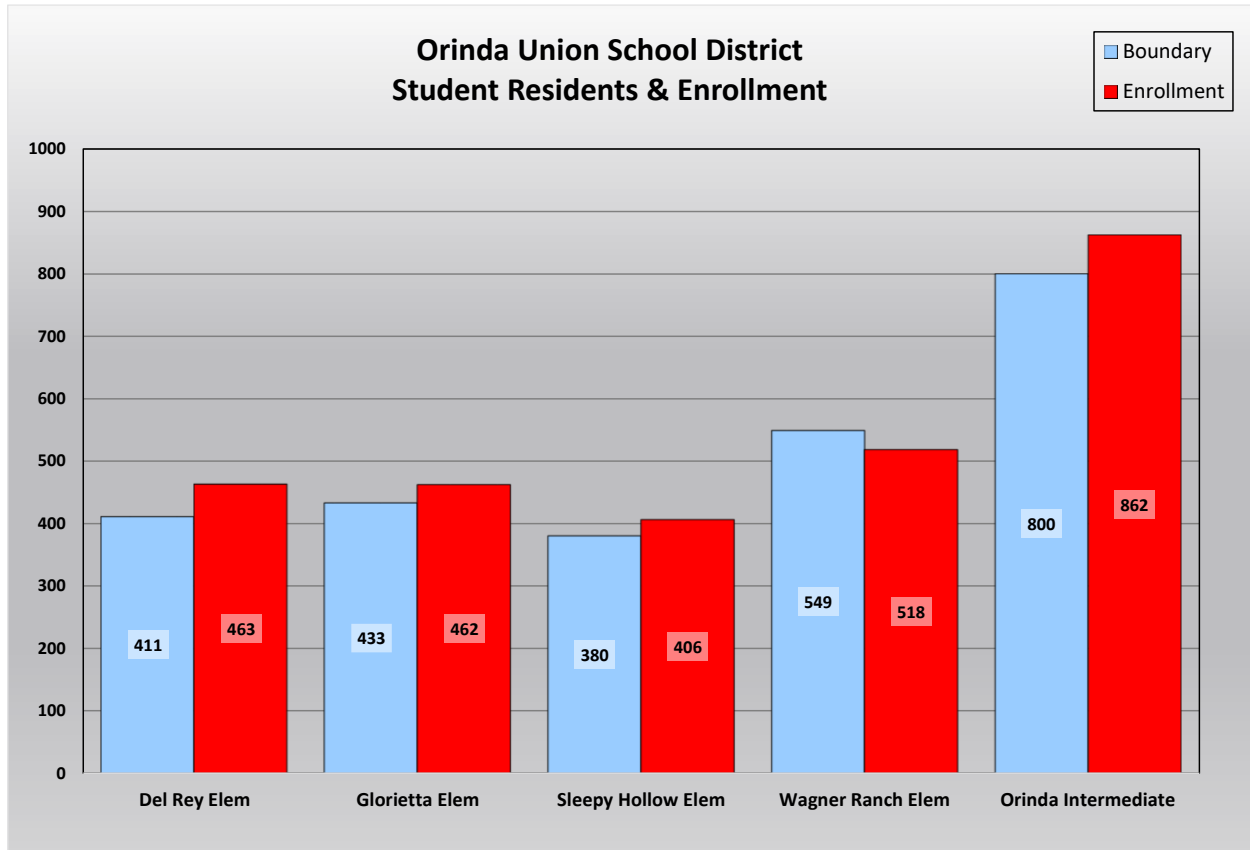
Orinda Union School District
 2025/26 Demographics and Enrollment Projections

Student Attendance Matrix

ATTENDANCE MATRIX							
	SCHOOL: AREA	SCHOOL OF ATTENDANCE					Total Residing
		Del Rey Elem	Glorietta Elem	Sleepy Hollow Elem	Wagner Ranch Elem	Orinda Intermediate	
R	Inter-District	42	13	12	10	62	139
E	Del Rey Elem	394	14	1	2	0	411
S	Glorietta Elem	11	413	3	6	0	433
I	Sleepy Hollow Elem	4	5	338	32	0	379
D	Wagner Ranch Elem	12	17	52	468	0	549
E	Orinda Intermediate	0	0	0	0	800	800
N	Total Attending	463	462	406	518	862	2,711
C	Intra-Ins	27	36	56	40	0	159
E	Inter-Ins	42	13	12	10	62	139
N	Total In-Flow	69	49	68	50	62	298
C	Intra-Outs	17	20	41	81	0	159
E	Net Transfers	52	29	27	-31	62	139
	% In-Flow Students	14.9%	10.6%	16.7%	9.7%	7.2%	11.0%
	% Out-Flow Students	4.1%	4.6%	10.8%	14.8%	0.0%	5.9%

This chart summarizes the transfers in and out of each school as were seen by the yellow dots and blue dots on the school attendance maps. In addition, the data has been analyzed to determine the total in-flow and out-flow rates for each school. The school with the largest in-flow rate is Sleepy Hollow Elementary and the school with the largest out-flow rate is Wagner Ranch Elementary.

Student Residency and Enrollment Comparison

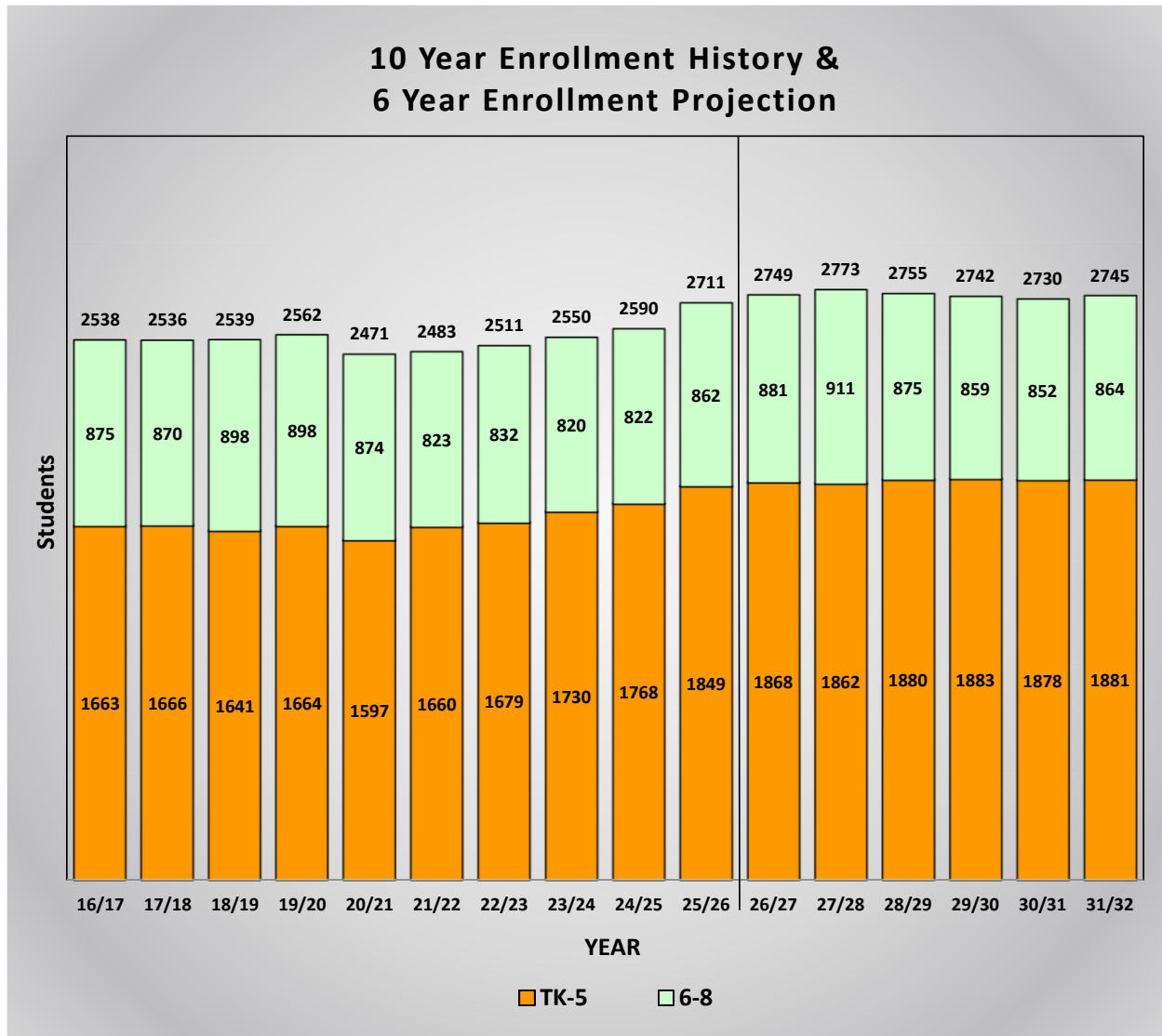


This chart compares each individual school enrollment to the students that reside within the school attendance boundary. Utilizing this data helps make it easy to see which schools have the largest and smallest enrollments as well as which boundaries are most populated. Schools with more students enrolled than those living in the boundary have a net transfer into the school. This is typically found at schools with special programs such as Gate or Dual Immersion, schools housing students from overcrowded or Program Improvement (PI) schools, and schools with more capacity than the student population living in the boundary.

Orinda Union School District
 2025/26 Demographics and Enrollment Projections

Ten Year Enrollment History and Six Year Enrollment Projections

This graph shows a summary of the projections for the entire District. It shows the current enrollment for 2025/26, the historic enrollment for the past nine years, and the projected enrollment for the next six years. The end result is a total of 2,745 students in the District in 2031/32.



The Orinda Union School District had a stable enrollment from 2,538 students during the 2016/17 school year to an enrollment of 2,562 in 2019/20, declined to 2,471 students in 2020/21, and has since been growing to a current enrollment of 2,711 students.

This graph is color coded by grade groupings:

Orange represents the historic and projected enrollment for the elementary school grades TK-5.
 Green represents the historic and projected enrollment for the intermediate school grades 6-8.

The entire District enrollment is shown at the top of each bar.

Orinda Union School District

2025/26 Demographics and Enrollment Projections

Enrollment Projection Summary by Grade

The chart below shows three years of historic enrollment, the current enrollment, and six years of projected enrollment by grade.

Orinda Union School District Enrollment Projection Summary by Grade										
Grade	Historic Enrollment			Current Enrollment	Projected Enrollment					
	<u>22/23</u>	<u>23/24</u>	<u>24/25</u>	<u>25/26</u>	<u>26/27</u>	<u>27/28</u>	<u>28/29</u>	<u>29/30</u>	<u>30/31</u>	<u>31/32</u>
TK	82	120	131	197	178	159	162	162	162	162
K	234	248	257	254	312	283	253	257	257	257
1	272	243	263	272	264	322	293	263	267	267
2	281	280	250	270	278	270	328	299	269	273
3	282	287	287	261	277	285	277	335	306	276
4	256	285	292	293	261	277	285	277	335	306
5	272	267	288	302	298	266	282	290	282	340
6	277	269	260	306	300	303	270	284	296	282
7	269	282	274	266	299	293	296	263	277	289
8	286	269	288	290	282	315	309	312	279	293
Total TK-5	1,679	1,730	1,768	1,849	1,868	1,862	1,880	1,883	1,878	1,881
Total 6-8	832	820	822	862	881	911	875	859	852	864
District Totals	2,511	2,550	2,590	2,711	2,749	2,773	2,755	2,742	2,730	2,745

Enrollment Projection Summary by School

The chart below shows the current enrollment and six years of projected enrollment by school.

Orinda Union School District Enrollment Projection Summary by School							
School	Current Enrollment						
	<u>25/26</u>	<u>26/27</u>	<u>27/28</u>	<u>28/29</u>	<u>29/30</u>	<u>30/31</u>	<u>31/32</u>
Del Rey Elem	463	460	453	450	454	445	448
Glorietta Elem	462	452	456	458	458	456	459
Sleepy Hollow Elem	406	416	414	422	425	424	424
Wagner Ranch Elem	518	540	539	550	546	553	550
Elementary Totals	1,849	1,868	1,862	1,880	1,883	1,878	1,881
Orinda Intermediate	862	881	911	875	859	852	864
Intermediate Totals	862	881	911	875	859	852	864
District Totals	2,711	2,749	2,773	2,755	2,742	2,730	2,745
Annual Change		38	24	-18	-13	-12	15

Orinda Union School District
 2025/26 Demographics and Enrollment Projections

2025/26 One Year Enrollment Projection by School and Grade

Orinda Union School District											
Enrollment Projections											
YEAR 26/27, 1 Year Proj.											
School	T	K	1	2	3	4	5	6	7	8	TOTAL
Del Rey Elem	50	73	58	72	62	69	76	0	0	0	460
Glorietta Elem	49	74	61	68	68	66	66	0	0	0	452
Sleepy Hollow Elem	34	74	63	63	60	54	68	0	0	0	416
Wagner Ranch Elem	45	91	82	75	87	72	88	0	0	0	540
Orinda Intermediate	0	0	0	0	0	0	0	300	299	282	881
Totals	178	312	264	278	277	261	298	300	299	282	2,749
Current CalPADS	197	254	272	270	261	293	302	306	266	290	2,711
Net Change	-19	58	-8	8	16	-32	-4	-6	33	-8	38
Cohort Change			10	6	7	0	5	-2	-7	16	

Orinda Union School District has a current enrollment of 2,711 students. The projected enrollment for next year shows an increase of 38 students. This one year summary analyzes the net change between the current District enrollment by school and by grade, and the projected enrollment for 2026/27.

The students living in the boundary generate the cohort factors which are calculated for the past three years and the average is determined. Those cohorts are then used to determine the students who will be residing in each attendance area for the following years. Next the attendance factor is used to determine the net enrollment for each grade. The attendance factor is determined by analyzing the current year of students to see how many Inter- and Intra-district transfers there are. The cohort change factor indicates the change in the number of students for each grade compared to the number of students in the prior grade the previous year.

These projections assume the transfers between schools remain consistent. If changes in facilities, schedules, programs or policies are made, then the patterns may be impacted.

Orinda Union School District
2025/26 Demographics and Enrollment Projections

SCHOOL FACILITY UTILIZATION

The following chart shows the current and projected utilization rates for each school. It has been color coded with blue representing schools with a utilization rate of less than 70%, yellow representing a utilization rate of at least 70% but under 80%, green representing a utilization rate of at least 80% but under 90%, orange representing at least 90% but under 100%, and a red outline for the schools that have 100% or higher utilization. The utilization indicates the long term impacts of the changes in enrollment as compared to the school capacities.

School Facility Utilization			2025/26	2031/32	2025/26	2031/32
	Net	Net CR	Current	Projected	Current	Projected
<u>Elementary Schools</u>	<u>Classrooms</u>	<u>Capacity</u>	<u>Enrollment</u>	<u>Enrollment</u>	<u>Utilization</u>	<u>Utilization</u>
Del Rey Elem	22	503	463	448	92.0%	89.1%
Glorietta Elem	22	502	462	459	92.0%	91.4%
Sleepy Hollow Elem	19	435	406	424	93.3%	97.5%
Wagner Ranch Elem	22	504	518	550	102.8%	109.1%
Sub-Totals	85	1,944	1,849	1,881	95.1%	96.8%
<u>Intermediate Schools</u>						
Orinda Intermediate	43	1,118	862	864	77.1%	77.3%
Sub-Totals	43	1,118	862	864	77.1%	77.3%
District Totals	128	3,062	2,711	2,745	88.5%	89.6%

For 2025, the school with the highest percentage of available space is Orinda Intermediate and the school that is impacted the most is Wagner Ranch Elementary.

Orinda Union School District 2025/26 Demographics and Enrollment Projections

The color-coded map below shows the projected utilization for the elementary schools.

