





**SITE EGRESS LEGEND**

- EXISTING BUILDINGS
- AC PAVING, SCD
- CONCRETE FLATWORK, SCD
- (E) LANDSCAPING TO REMAIN
- (N) LANDSCAPING, SLD
- NIC
- FENCING
- BUILDING ENTRY POINTS
- (E) ACCESSIBLE DRINKING FOUNTAIN
- VAN ACCESSIBLE PARKING, DSA 02-113987 TO BE RESTRIPTED WITH THIS PROJECT AS PART OF PAVEMENT RESEAL AND STRIPING, SEE A1.2
- STANDARD ACCESSIBLE PARKING, DSA 02-113987 TO BE RESTRIPTED WITH THIS PROJECT AS PART OF PAVEMENT RESEAL AND STRIPING, SEE A1.2
- EMERGENCY VEHICLE ACCESS PATH
- (BLDG "X") INDICATES (E) DISTRICT BUILDING #
- FOR ACCESSIBLE ROUTE REQUIREMENTS SEE DETAIL 7/A1.14T
- (E) ACCESSIBLE PATH OF TRAVEL PER DSA 02-113987
- ACCESSIBLE PATH OF TRAVEL: PER DSA 02-123876

BARRIER-FREE ACCESS ROUTE WITHOUT ANY ABRUPT LEVEL CHANGES EXCEEDING 1/2" IF BEVELED AT 1:2 MAX SLOPE, OR VERTICAL LEVEL CHANGES NOT EXCEEDING 1/4" MAX AND 48" MIN WIDTH. SURFACE IS TO BE STABLE, FIRM AND SLIP RESISTANT. CROSS SLOPE NOT TO EXCEED 2%. SLOPE IN DIRECTION OF TRAVEL NOT TO EXCEED 5%. ACCESSIBLE ROUTE SHALL BE MAINTAINED TO PROVIDE 80" CLEAR HEIGHT W/ 4" MAX OBJECT PROTRUSION.

ARCHITECT VERIFIED COMPLIANCE WITH THE FOLLOWING STATEMENT:  
 "THE POT IDENTIFIED IN THESE CONSTRUCTION DOCUMENTS MEETS THE REQUIREMENTS OF THE CURRENT APPLICABLE CALIFORNIA BUILDING CODE (CBC) ACCESSIBILITY PROVISIONS FOR PATH OF TRAVEL REQUIREMENTS FOR ALTERATIONS, ADDITIONS AND STRUCTURAL REPAIRS, AS PART OF THE DESIGN OF THIS PROJECT, THE POT WAS EXAMINED AND ANY ELEMENTS, COMPONENTS OR PORTIONS OF THE POT THAT WERE DETERMINED TO BE NONCOMPLIANT WITH THE CBC HAVE BEEN IDENTIFIED AND THE CORRECTIVE WORK NECESSARY TO BRING THEM INTO COMPLIANCE HAS BEEN INCLUDED WITHIN THE SCOPE OF THIS PROJECT'S WORK THROUGH DETAILS, DRAWINGS AND SPECIFICATIONS INCORPORATED INTO THESE CONSTRUCTION DOCUMENTS. ANY NONCOMPLIANT ELEMENTS, COMPONENTS OR PORTIONS OF THE POT THAT WILL NOT BE CORRECTED BY THIS PROJECT BASED ON VALUATION THRESHOLD LIMITATIONS OR A FINDING OF UNREASONABLE HARDSHIP ARE INDICATED IN THESE CONSTRUCTION DOCUMENTS. DURING CONSTRUCTION, IF POT ITEMS WITHIN THE SCOPE OF THE PROJECT REPRESENTED AS CBC COMPLIANT ARE FOUND TO BE NONCONFORMING BEYOND REASONABLE CONSTRUCTION TOLERANCES, THE ITEMS SHALL BE BROUGHT INTO COMPLIANCE WITH THE CBC AS A PART OF THIS PROJECT BY MEANS OF A CONSTRUCTION CHANGE DOCUMENT."

**DRAWING NOTES**

**BUILDING DATA**

CENTER JOINT UNIFIED SCHOOL DISTRICT  
 CA5602 OAK HILL ELEMENTARY

EXISTING BUILDING RENOVATION

ACCESSORS PARCEL NUMBER 203-0070-086

OCCUPANCY  
 ADMINISTRATION B SECTION 304 (N.I.C.)  
 CLASSROOMS E SECTION 305  
 MULTI-USE ROOM A-3 SECTION 303.1.3 (N.I.C.)

CONSTRUCTION TYPE (TABLE 601) V-B EXISTING

NUMBER OF STORIES (TABLE 504.4)  
 PROVIDED 1 EXISTING

BUILDING HEIGHT 19'-0" EXISTING

PERMANENT BUILDING AREAS (SF)

(BLDG 1) BLDG A ADMINISTRATION	3,644 SF DSA02-58540
(BLDG 1) BLDG A LIBRARY	1,556 SF DSA02-58540
(BLDG 1) BLDG A COMPUTER CR	1,513 SF DSA02-58540
(BLDG 2) BLDG B KINDERGARTEN	2,779 SF DSA02-58540
(BLDG 3) BLDG C CLASSROOMS	3,101 SF DSA02-58540
(BLDG 4) BLDG D CLASSROOMS	3,101 SF DSA02-58540
(BLDG 5) BLDG E CLASSROOMS	3,204 SF DSA02-58540
(BLDG 6) BLDG F CLASSROOMS	3,101 SF DSA02-58540
(BLDG 7) BLDG G CLASSROOMS	3,101 SF DSA02-58540
(BLDG 8) BLDG H CLASSROOMS	3,204 SF DSA02-58540
(BLDG 9) BLDG K CLASSROOMS	4,050 SF DSA02-118373

PORTABLE CLASSROOM BUILDINGS (SF)

(BLDG 10) BLDG 21 RESTROOM	480 SF DSA02-101171
(BLDG 10) BLDG 21 CLASSROOM	960 SF DSA02-106462
(BLDG 11) BLDG 22 CLASSROOM	960 SF DSA02-106462
(BLDG 13) BLDG 23 CLASSROOM	960 SF DSA02-68420
(BLDG 14) BLDG 24 CLASSROOM	960 SF DSA02-68420
(BLDG 15) BLDG 25 CLASSROOM	960 SF DSA02-68420
(BLDG 16) BLDG 26 CLASSROOM	960 SF DSA02-68420
(BLDG 17) BLDG 27 CLASSROOM	960 SF DSA02-68420
(BLDG 18) BLDG 28 CLASSROOM	960 SF DSA02-100507
(BLDG 19) BLDG 29 CLASSROOM	960 SF DSA02-100507
(BLDG 20) BLDG 30 CLASSROOM	960 SF DSA02-100507
(BLDG 21) BLDG 31 CLASSROOM	960 SF DSA02-64317
(BLDG 22) BLDG 32 CLASSROOM	960 SF DSA02-63169
(BLDG 23) BLDG 33 CLASSROOM	960 SF DSA02-63169
(BLDG 24) BLDG 34 CLASSROOM	960 SF DSA02-63169
(BLDG 25) BLDG 35 CLASSROOM	960 SF DSA02-65965
(BLDG 26) BLDG B DAYCARE	1,440 SF DSA02-61923
(BLDG 27) BLDG B DAYCARE	960 SF DSA02-61924
(BLDG 28) BLDG C DAYCARE	960 SF DSA02-65434

TOTAL BUILDING AREA 54,90 SF

PROJECT AREA 20,490 SF

SEPARATED USE HEIGHT INCREASE NO

REQUIRED FIRE RESISTIVE RATINGS (TABLE 601)

STRUCTURAL FRAME	0 HOUR
BEARING WALLS	0 HOUR
EXTERIOR	0 HOUR
NON-BEARING WALLS	0 HOUR
EXTERIOR (TABLE 602)	0 HOUR W/ MIN 10' SEPARATION
INTERIOR	0 HOUR
FLOORS - CEILING/FLOORS	0 HOUR
ROOF CONSTRUCTION	0 HOUR
SHAFT ENCLOSURES	1 HOUR (LESS THAN 4 STORIES)
CORRIDOR WALLS	1 HOUR (TABLE 1020.1)

FIRE SPRINKLERS EXISTING YES IN BLDG A ONLY

FIRE ALARM YES - AUTOMATIC

SMOKE CONTROL SYSTEM NO

HIGH FIRE HAZARD SEVERITY ZONE: NO

SEISMIC ZONE: YES, BUILDINGS A, E, H, K

OCCUPANT LOAD CALCULATION

B OCC	3,644 SF @ 100 SF/OCC =	36
E OCC	39,265 SF @ 20 SF/OCC =	1,964
A-3 OCC	4,306 SF @ 15 SF/OCC =	287

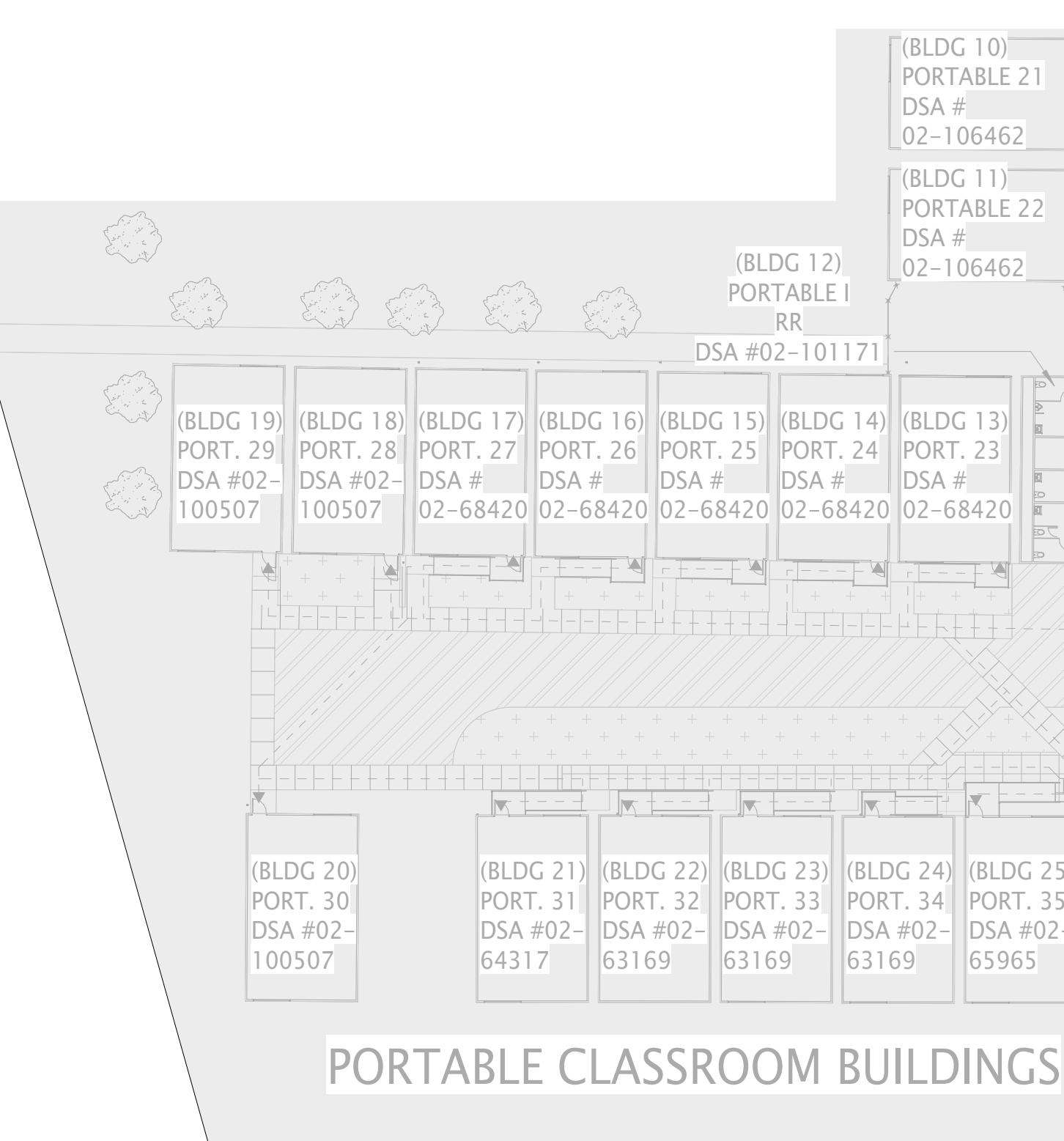
**GATE SCHEDULE**

SEE DOOR HARDWARE SPECIFICATION FOR ADDITIONAL INFORMATION

#	GATE DESCRIPTION	WIDTH	DETAIL REF.
G1	(E) FIRE ACCESS GATE W/ KNOX BOX PAD LOCK - SWING	32' PR	NOT IN SCOPE
G2	(E) FIRE ACCESS GATE W/ KNOX ROLLING - ORNAMENTAL	20'	NOT IN SCOPE
G3	(E) SINGLE GATE - ORNAMENTAL - SEE DETAIL 4/G1.1	3'	NOT IN SCOPE
G4	NOT USED	-	-
G5	(E) DOUBLE GATE - ORNAMENTAL	6' PR	NOT IN SCOPE
G6	(E) DOUBLE GATE - ORNAMENTAL	8' PR	NOT IN SCOPE
G7	(E) DOUBLE GATE - ORNAMENTAL	6' PR	NOT IN SCOPE
G8	(E) DOUBLE GATE - ORNAMENTAL	8' PR	NOT IN SCOPE
G9	(E) SINGLE CHAINLINK GATE	3'	NOT IN SCOPE
G10	(E) SINGLE CHAINLINK GATE	4'	NOT IN SCOPE
G11	(N) TRASH ENCLOSURE DOUBLE GATE	8'-0" PR	8/A1.11T
G12	(N) TRASH ENCLOSURE DOUBLE GATE	16'-0" PR	8/A1.11T



4 EXISTING GATE - 3 Copy 1 N.T.S.



CENTER JOINT UNIFIED SCHOOL DISTRICT  
 CA5602 OAK HILL ELEMENTARY SCHOOL

EXISTING BUILDING RENOVATION

PLUMBING FIXTURE CALCULATION (CPC TABLE 422.1)

FIXTURE OCCUPANT LOAD CALCULATION

ADMINISTRATION  
 3,644 SF / 200 = 18 OCCS < 50 OCCS = 1 UNISEX RESTROOM OK

CLASSROOMS  
 35,218 SF / 50 = 704 OCCS  
 704 OCCS / 2 = 352 EACH M/F

MULTI-USE ROOM  
 4,306 SF / 15 = 287 OCCS  
 287 OCCS / 2 = 144 EACH M/F

BUILDING K KINDERGARTEN CLASSROOMS  
 4,088 SF / 50 = 81 OCCS  
 81 OCCS / 2 = 41 OCC < 50 OCC = 1 UNISEX RESTROOM OK

REQUIRED FIXTURE COUNT

	WC REQ	WC PRV	UR REQ	UR PRV	LAV REQ	LAV PRV	DF REQ	DF PRV
CLASSROOMS								
MEN	8	6	4	7	9	8	5	25
WOMEN	12	12			9	8		
MULTI-USE BUILDING								
MEN	2	2	5	1	4	2	2	
WOMEN	4	6		2	4			
ADMINISTRATION								
UNISEX	1	4	1	-	1	4	1	2
BUILDING K KINDERGARTEN								
UNISEX	1	3	-	-	3	4	1	1

**OAK HILL ES TRASH ENCLOSURE**

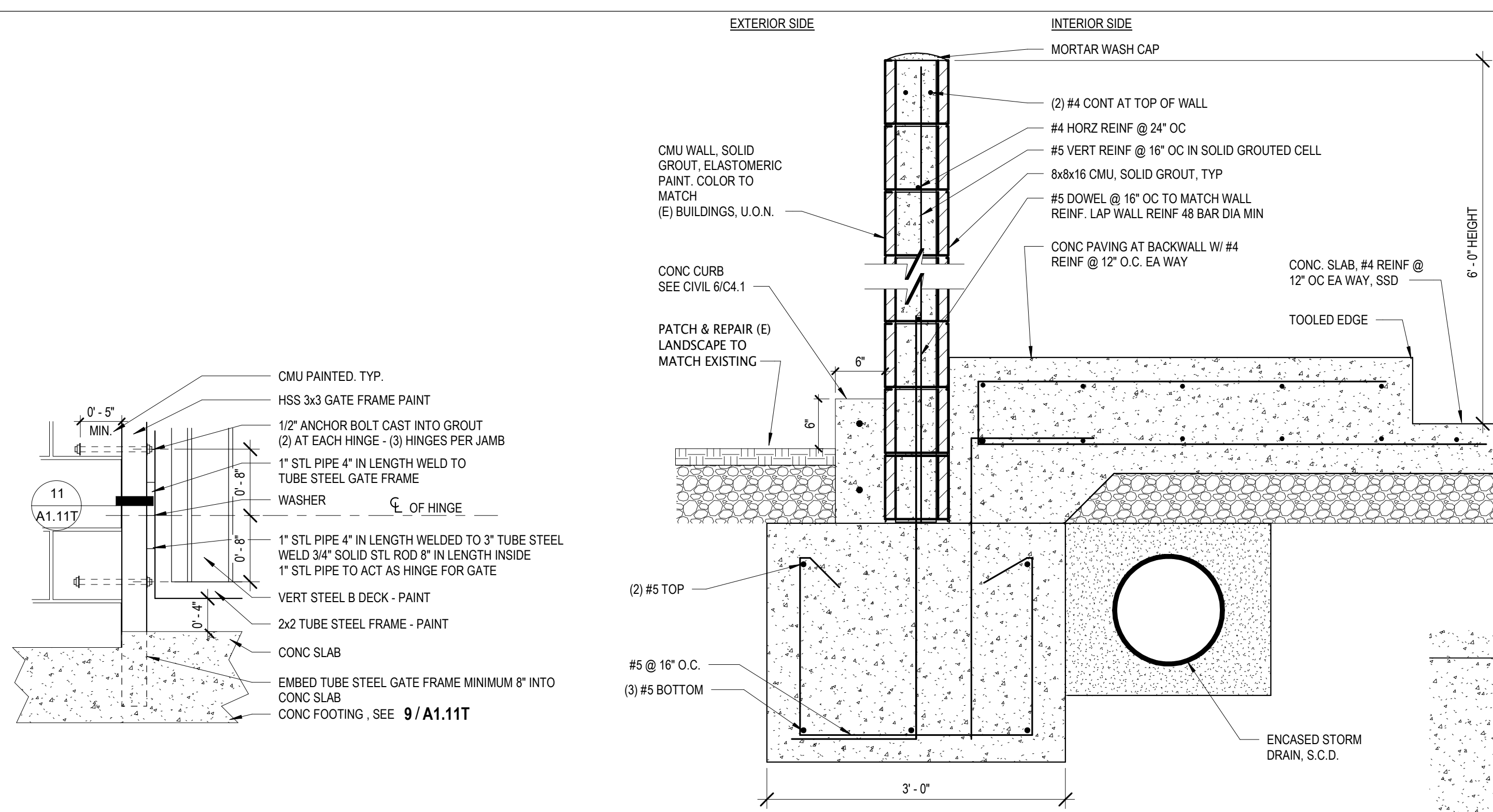
CJUSD  
 3909 NORTH LOOP BLVD  
 ANTELOPE, CA 95843

**SITE CODE ANALYSIS & EGRESS PLAN**

G1.1T

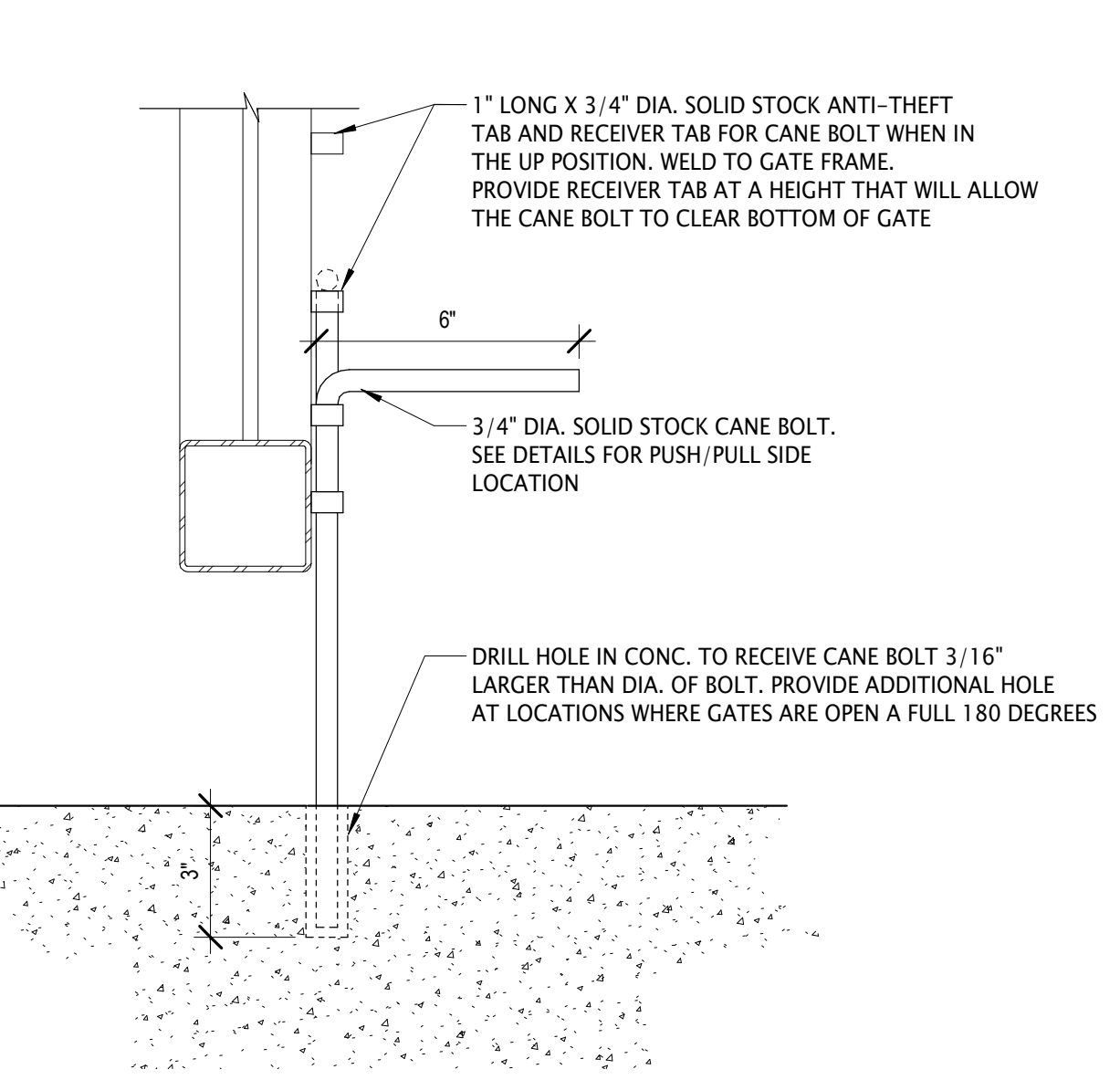




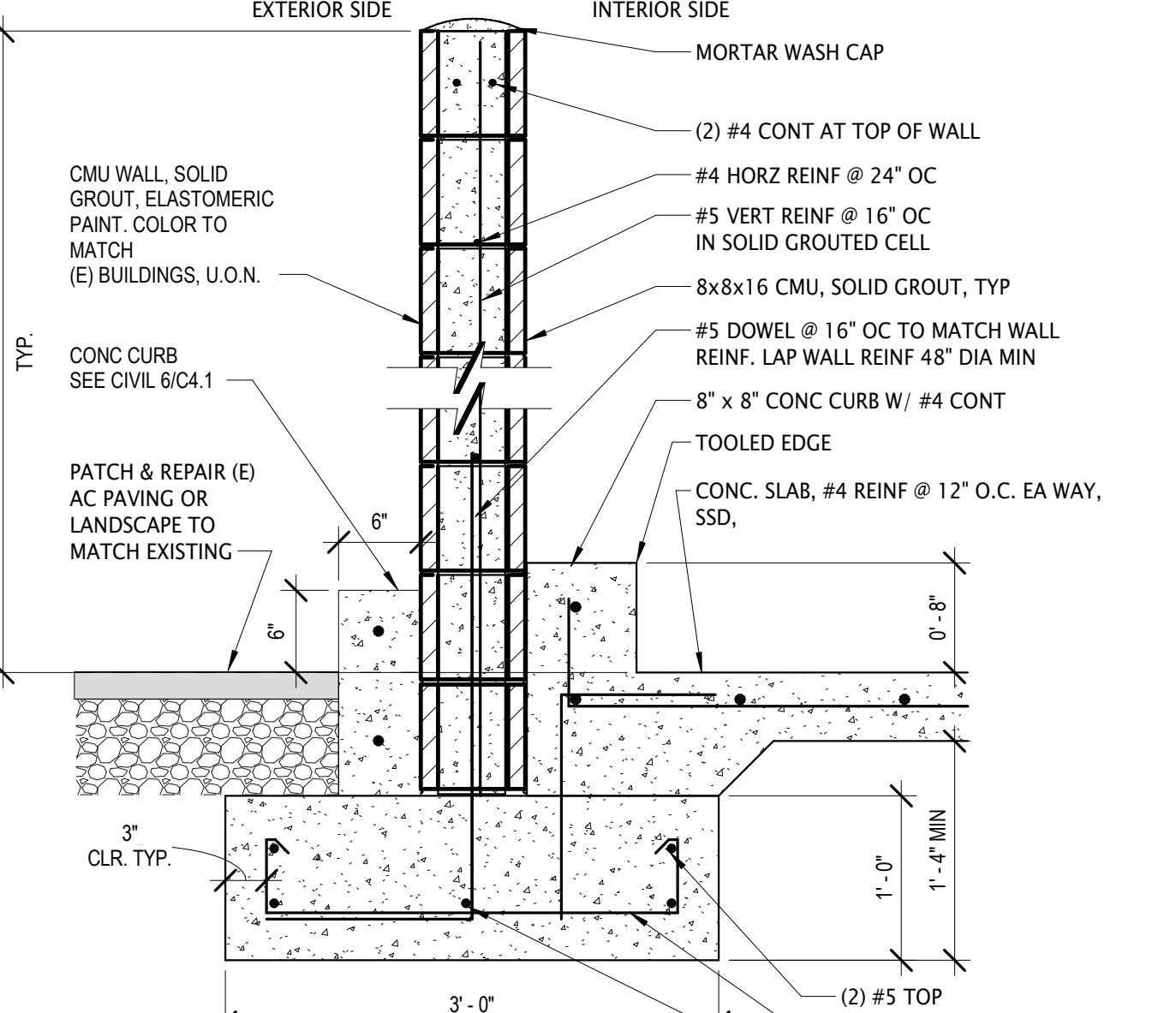


**13 TRASH ENCLOSURE GATE JAMB**  
1" = 1'-0"

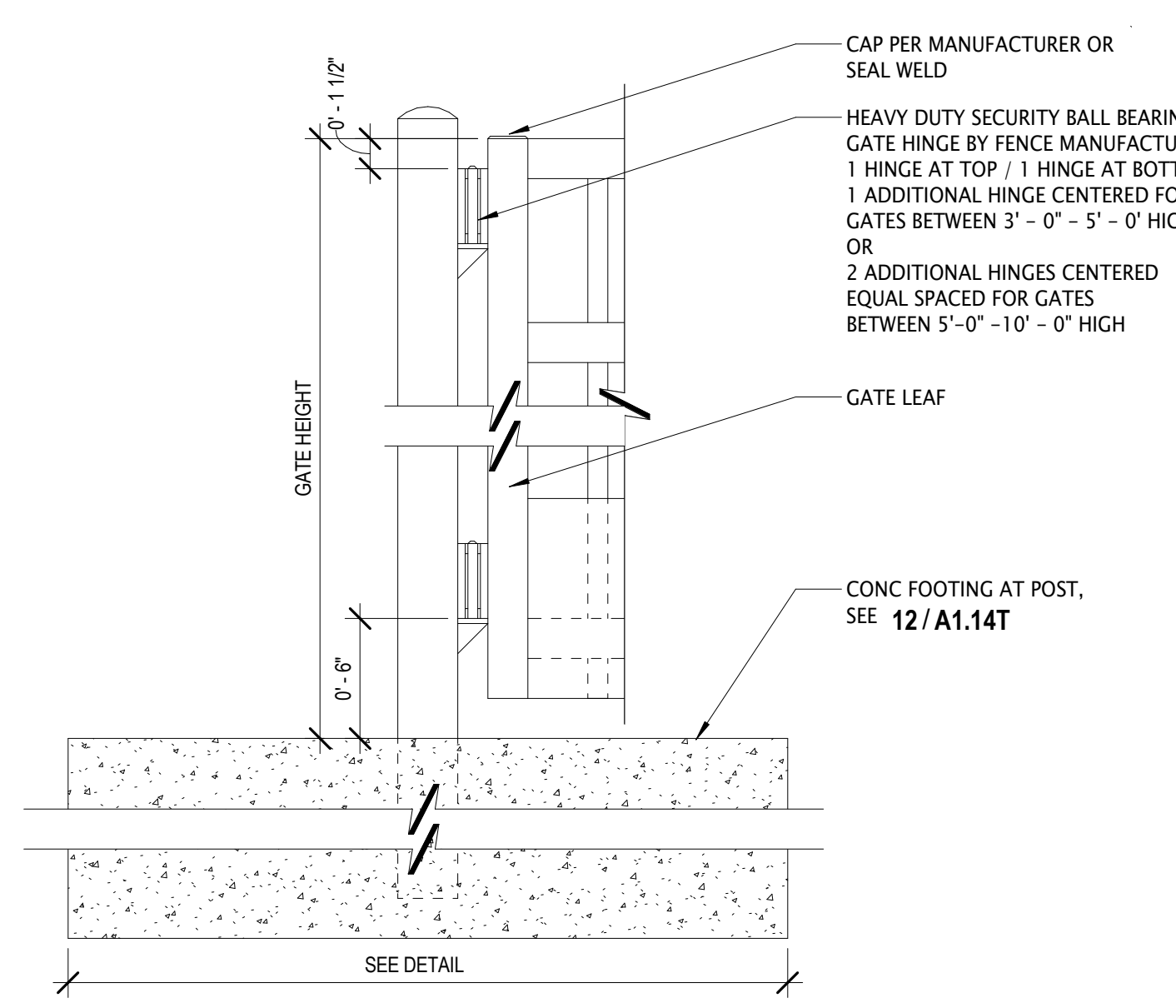
**9 TRASH ENCLOSURE SECTION**  
1" = 1'-0"



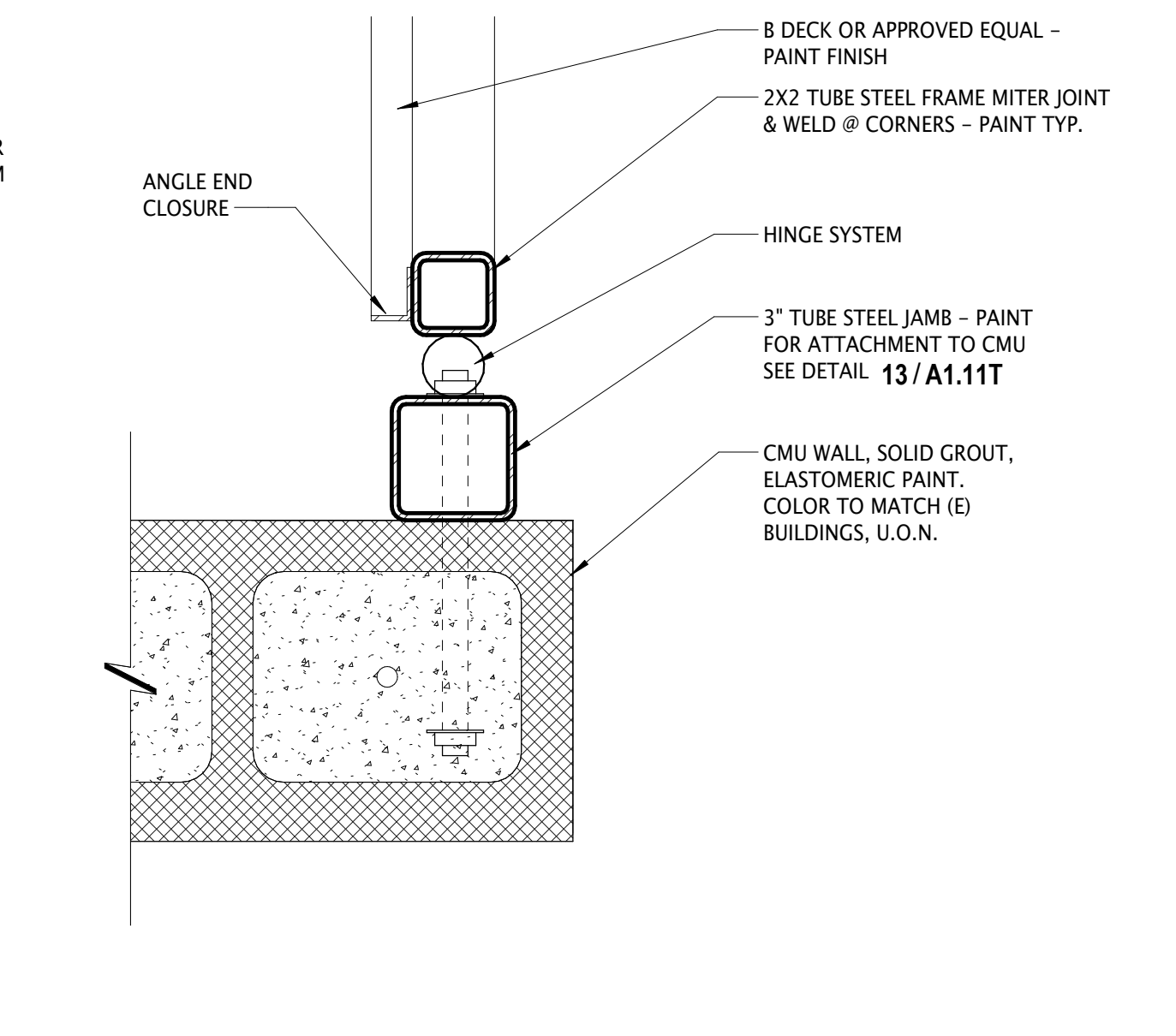
**14 TYPICAL CANE BOLT**  
3" = 1'-0"



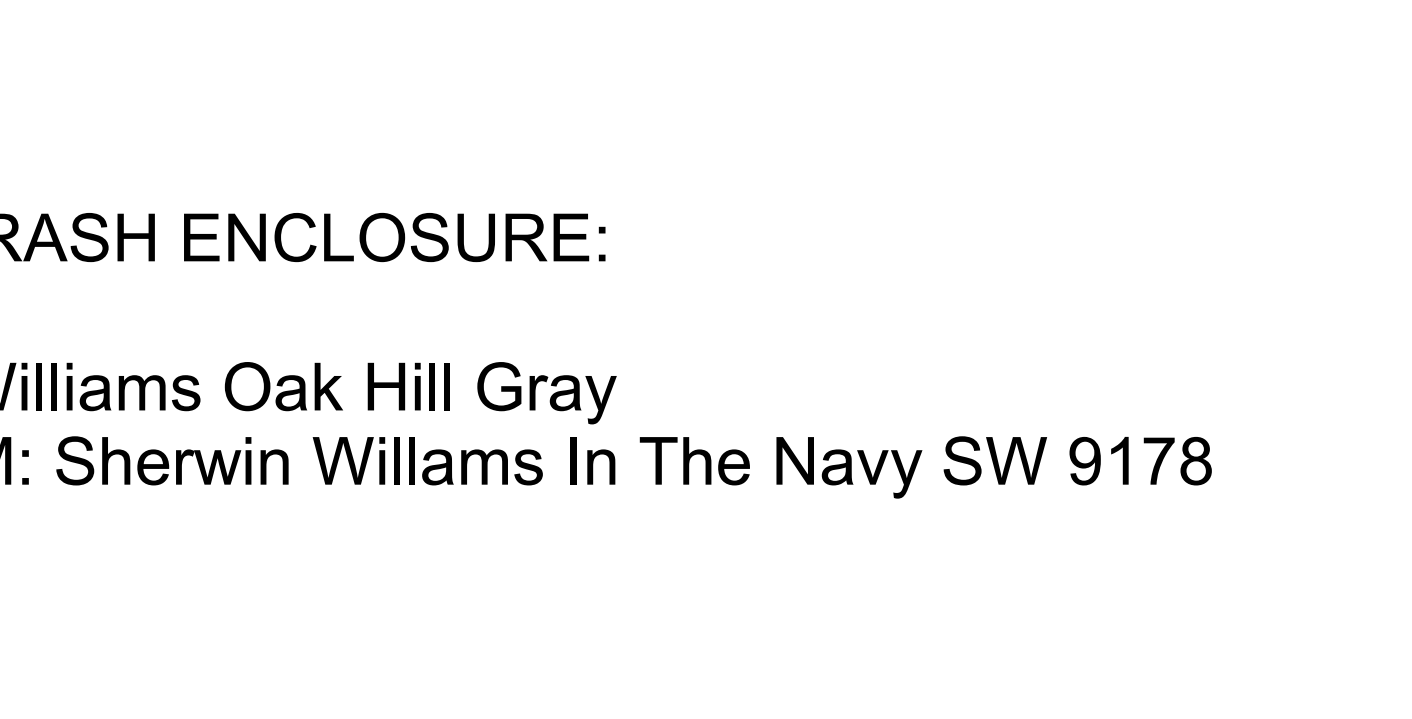
**10 TRASH ENCLOSURE SECTION1**  
1" = 1'-0"



**15 CENTER GATE POST AT DUMPSTER**  
1 1/2" = 1'-0"



**11 TRASH ENCLOSURE JAMB1**  
3" = 1'-0"



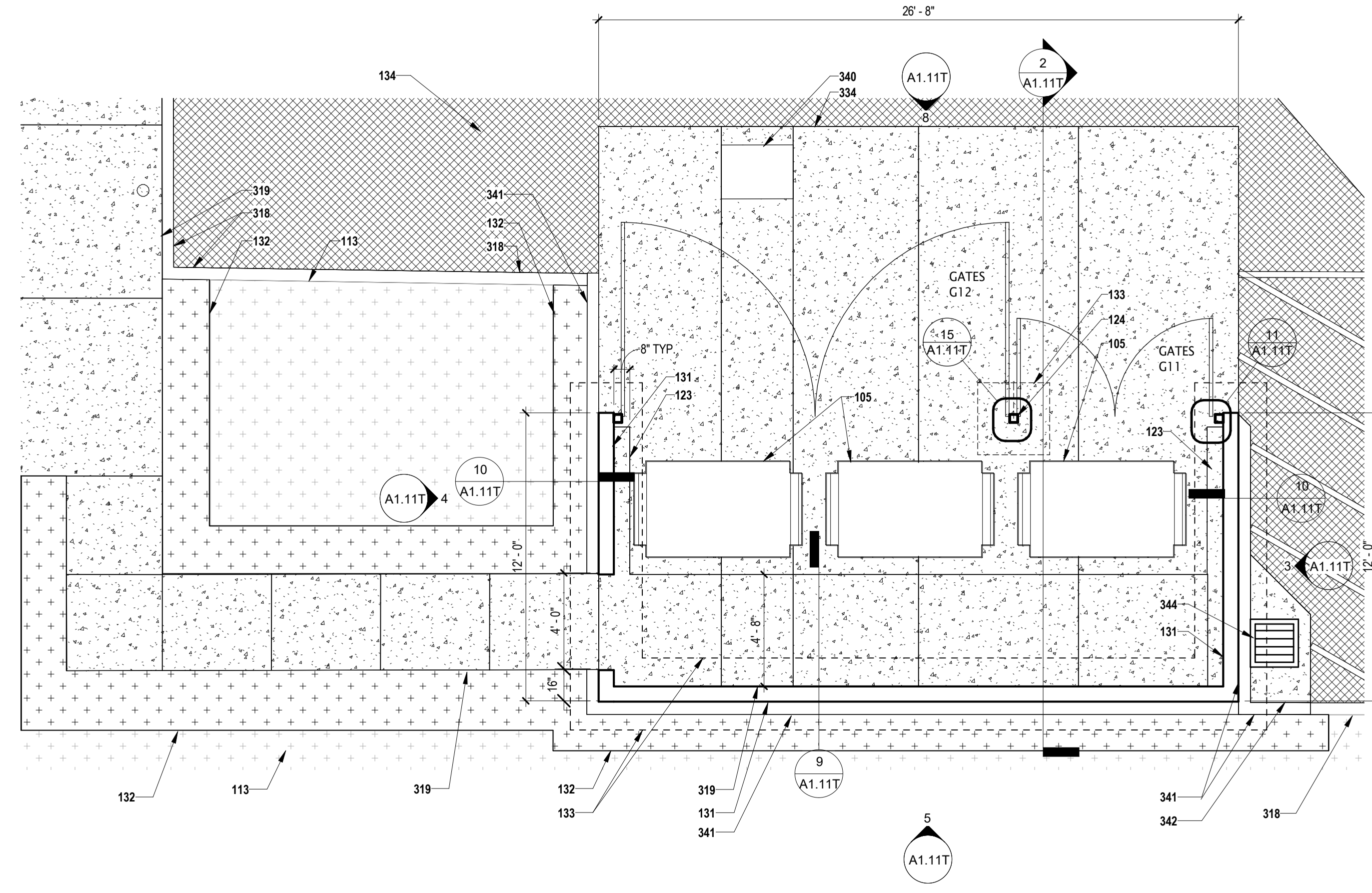
**12 TRASH ENCLOSURE GATE CANE BOLTS**  
1 1/2" = 1'-0"

**SITE LEGEND**

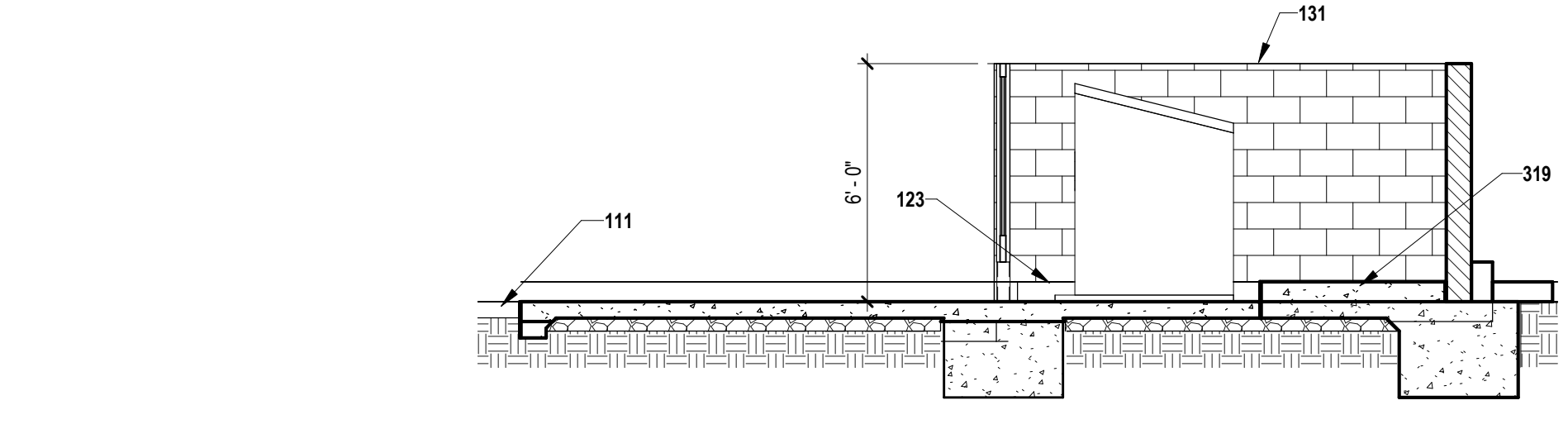
[Pattern]	NEW CONCRETE FLATWORK, SSD
[Pattern]	NEW ASPHALTIC PAVING, SSD
[Pattern]	EXISTING LANDSCAPING
[Pattern]	NEW LANDSCAPING, SSD

**DRAWING NOTES**

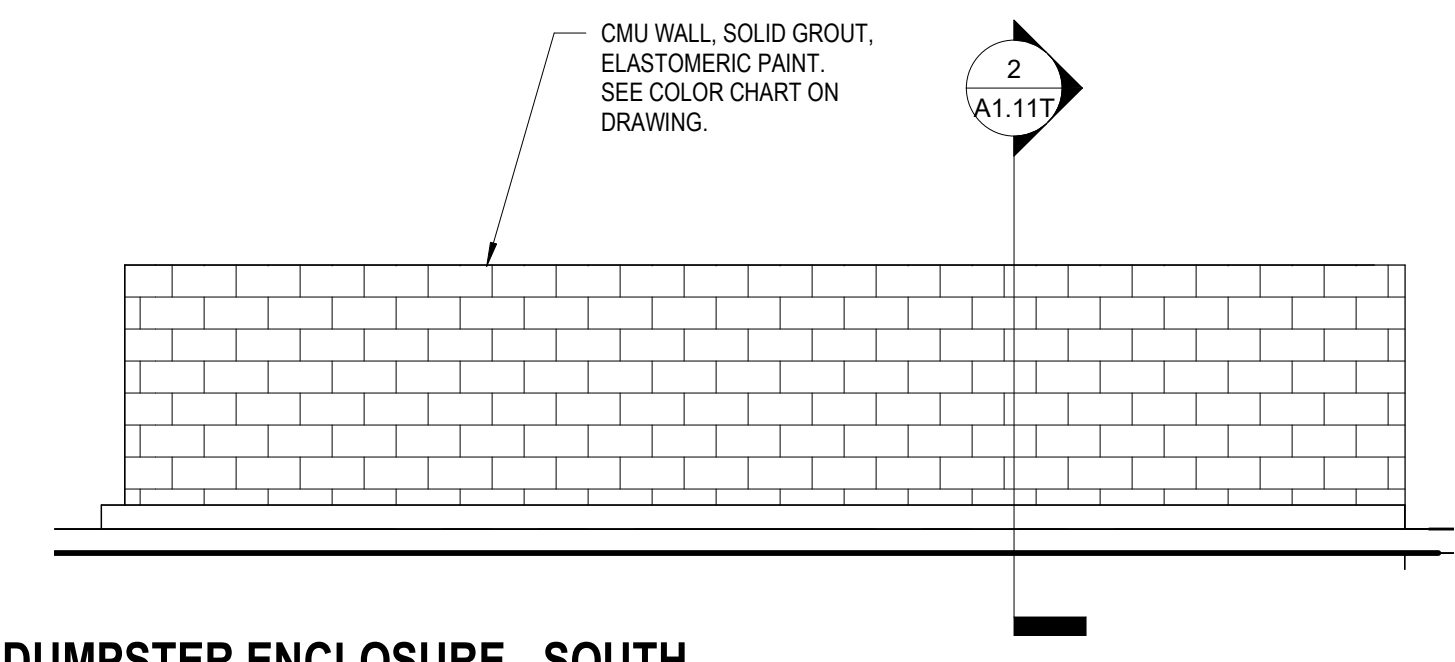
105	(E) DUMPSTER RELOCATED TO (N) ENCLOSURE.
111	(E) ASPHALTIC CONCRETE PAVING TO REMAIN.
113	(E) LANDSCAPING TO REMAIN.
123	8x8 CONCRETE CURB. SEE DETAILS 8&10A1.11T.
124	4"x4"x1/4" TUBE STEEL POST.
131	8x8x16 CMU WALL W/ ROUNDED MORTAR CAP.
132	PATCH BACK (E) LANDSCAPING AND IRRIGATION. SSD
133	DASH LINE SHOWS EXTENT OF FOOTING FOR CMU WALL AND GATE POST
134	CROSS HATCH PATTERN SHOWS EXTENT OF ASPHALT PAVING. SSD
318	(E) CONCRETE CURB TO REMAIN.
319	(N) CONCRETE FLATWORK W/ SCORE LINES TO MATCH (E) ADJACENT FLATWORK. COORDINATE WITH CIVIL DRAWINGS.
340	(N) CONCRETE SLAB AT (N) DUMPSTER ENCLOSURE. THICKNESS AND REINFORCING PER DETAILS. COORDINATE WITH CIVIL DRAWINGS.
341	REMOVE (E) UTILITY BOX AND INSTALL NEW TRAFFIC RATED UTILITY BOX SEE CIVIL DRAWINGS.
342	(N) CONCRETE CURB SEE CIVIL DRAWINGS.
344	(N) CONCRETE GUTTER AROUND DRAIN INLET SEE CIVIL DRAWINGS.



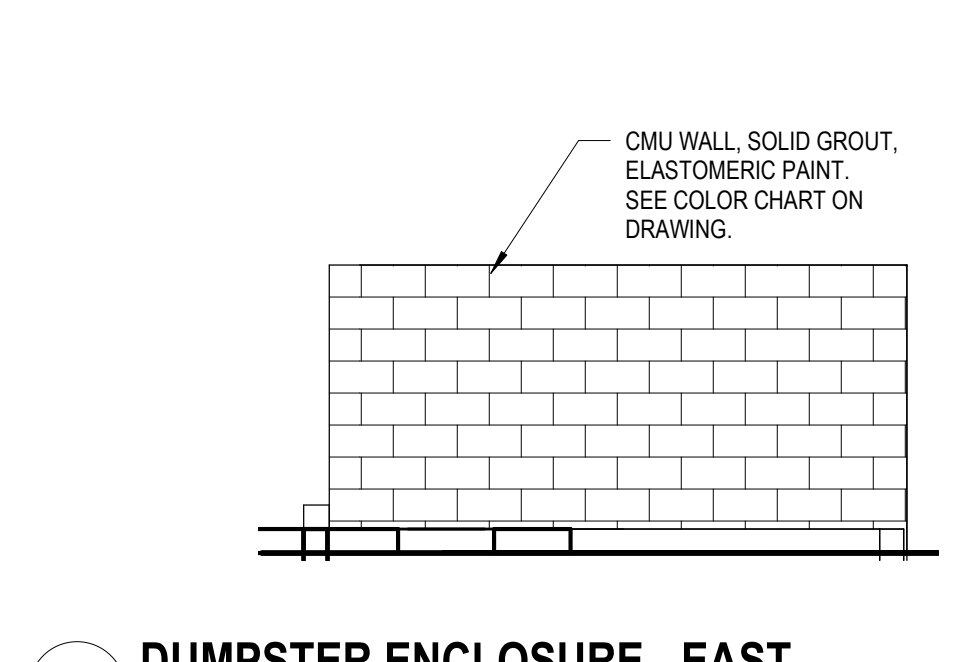
**1 PARTIAL SITE PLAN - DUMPSTER ENCLOSURE PLAN**  
1/4" = 1'-0"



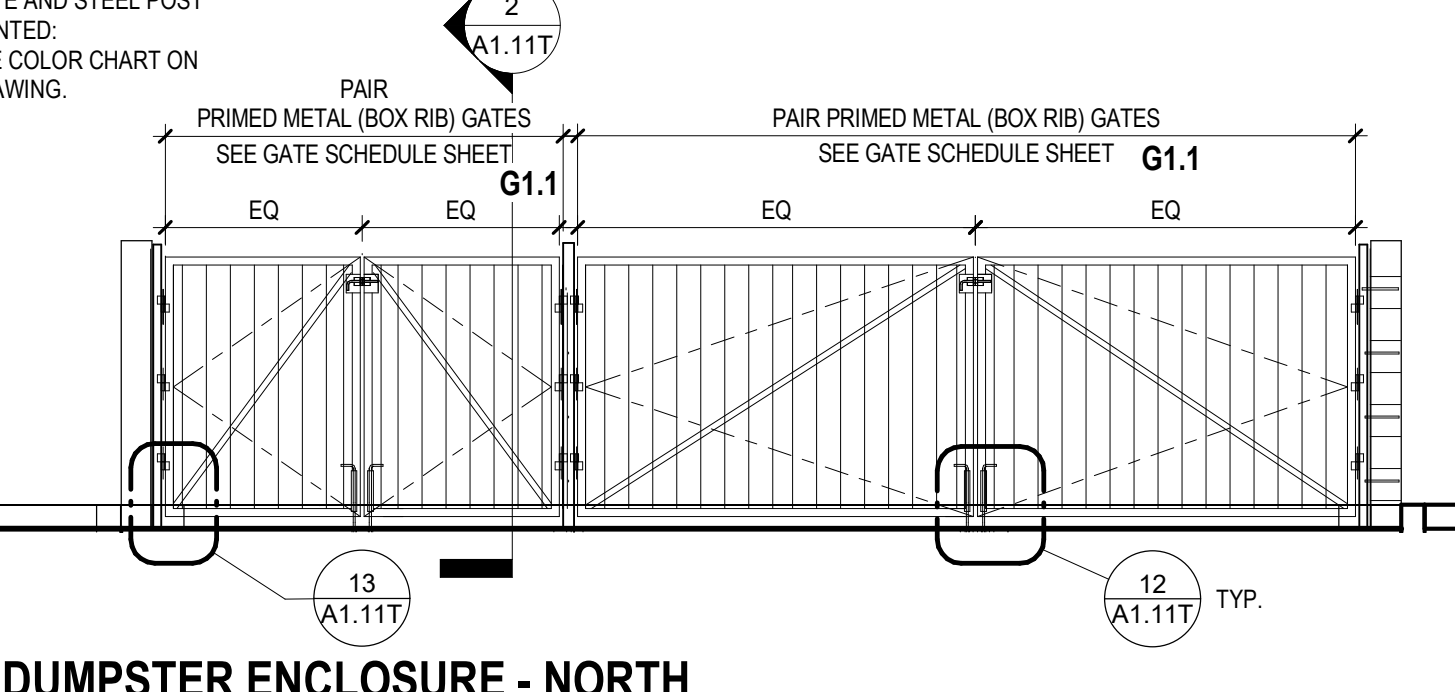
**2 DUMPSTER ENCLOSURE SECTION**  
1/4" = 1'-0"



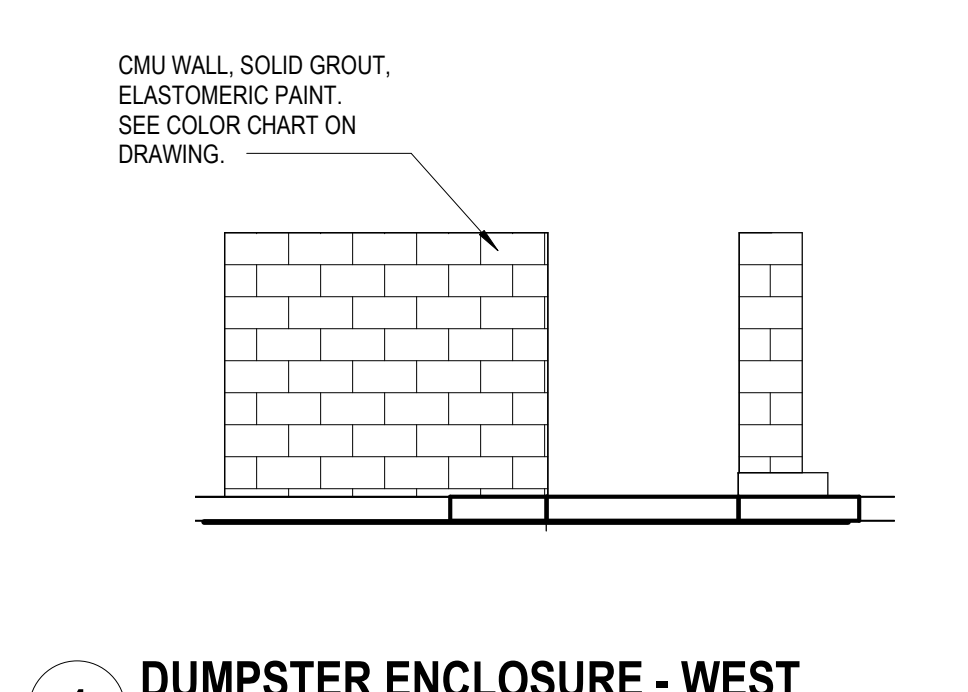
**5 DUMPSTER ENCLOSURE - SOUTH**  
1/4" = 1'-0"



**3 DUMPSTER ENCLOSURE - EAST**  
1/4" = 1'-0"



**8 DUMPSTER ENCLOSURE - NORTH**  
1/4" = 1'-0"



**4 DUMPSTER ENCLOSURE - WEST**  
1/4" = 1'-0"

**DUMPSTER ENCLOSURE EXTERIOR ELEVATIONS**

**COLORS FOR TRASH ENCLOSURE:**  
WALL: Sherwin Williams Oak Hill Gray  
DOOR AND TRIM: Sherwin Williams In The Navy SW 9178

dsa

architect

**ACMARTIN**  
2508 VENTURE GAKS WAY, SUITE 210  
SACRAMENTO CA 95833 1 916 783 9900

stamp

consultant

project number 1815054 CA5602  
project director  
project designer  
project architect

no.	date	revision
4	4/16/2026	DSA SUBMITTAL

project status

**DSA SUBMITTAL**

client / project

**OAK HILL ES TRASH ENCLOSURE**

CJUSD  
3909 NORTH LOOP BLVD  
ANTELOPE, CA 95843

sheet name

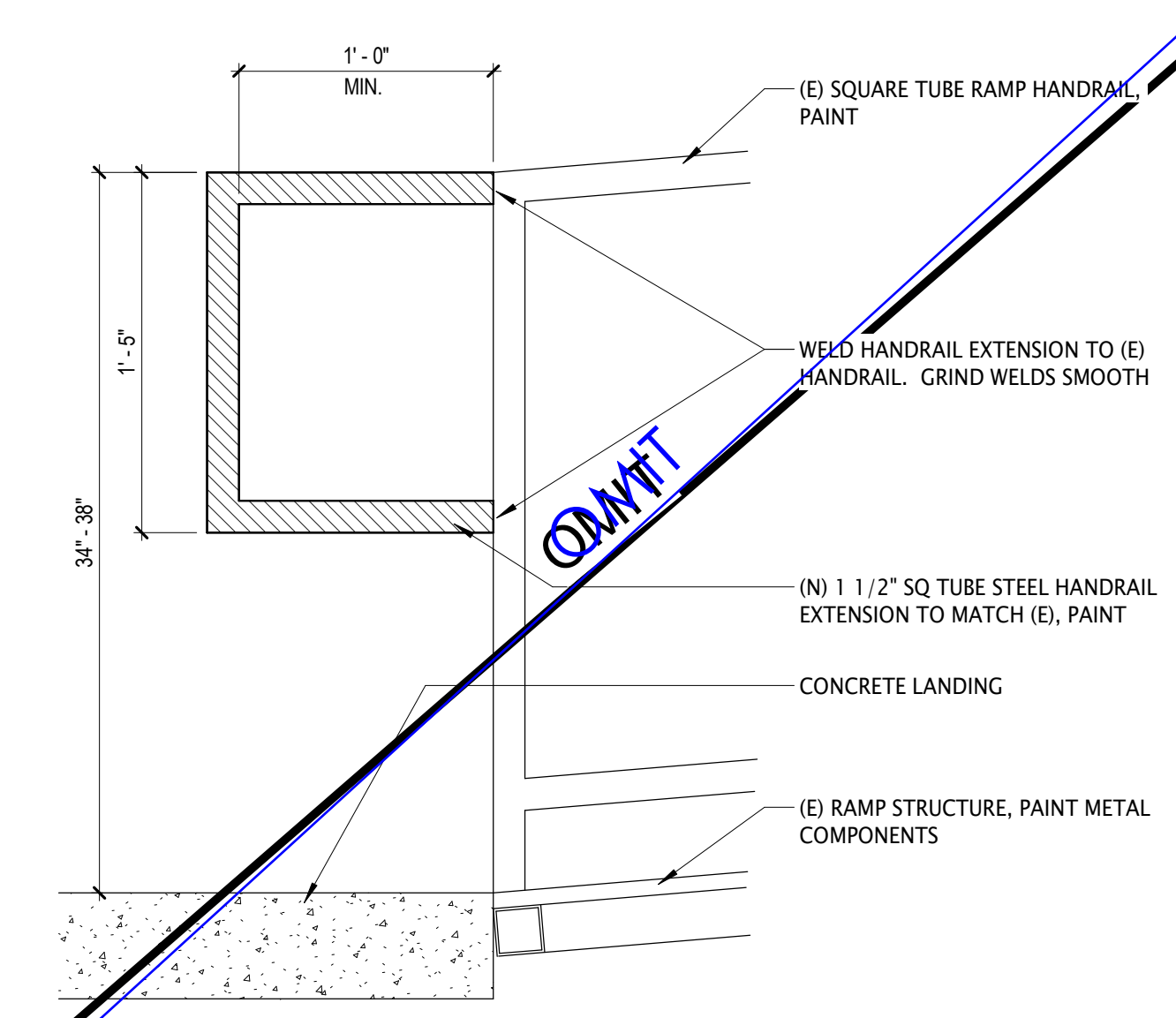
**DUMPSTER ENCLOSURE**

sheet number

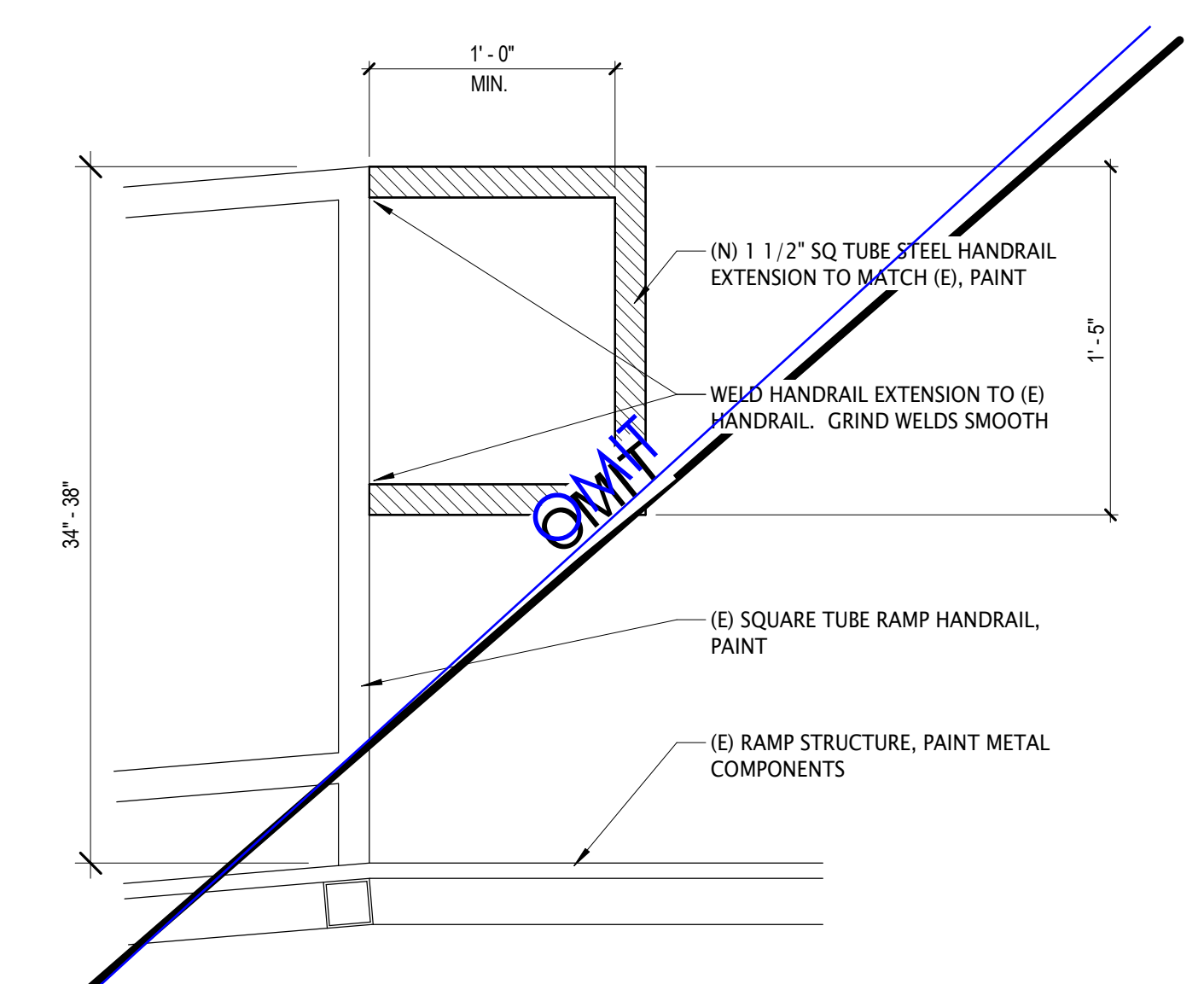
**A1.11T**

plot date 4/16/2026 2:53:15 PM

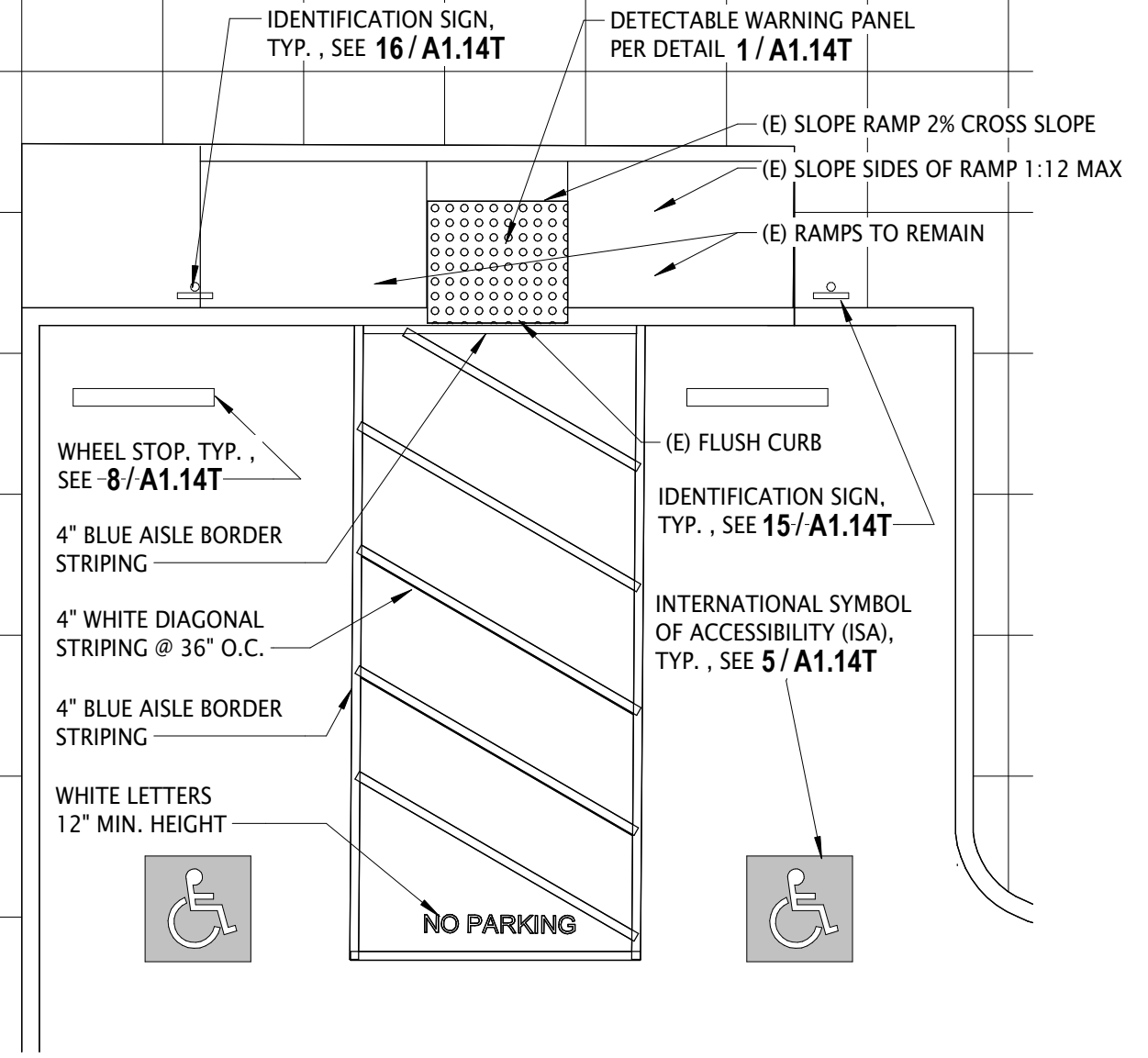
Addendum Doc/1815054\_CA5602\_Oak Hill ES Trash Enclosure ES\_Mod\_R22.rvt



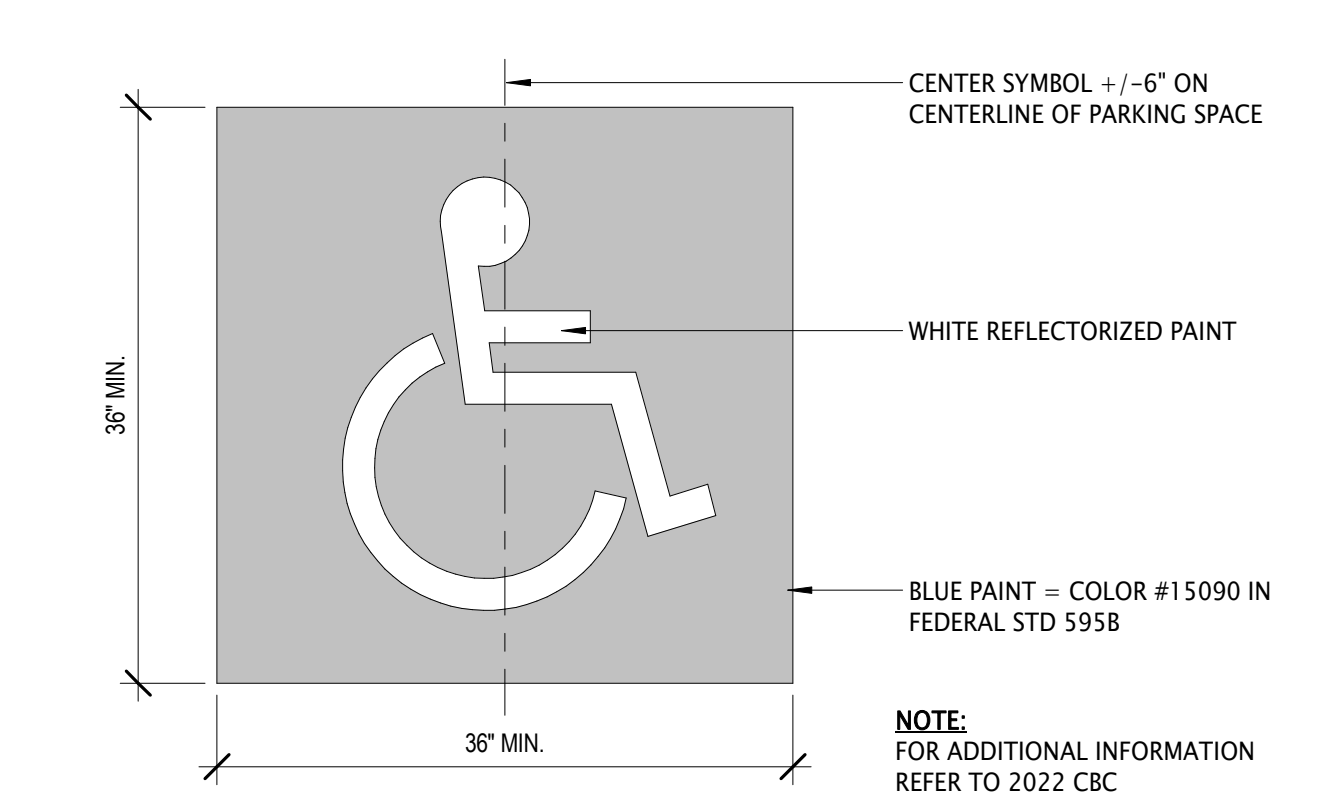
17 HANDRAIL AT RAMP BOTTOM-SQUARE  
1 1/2" = 1'-0"



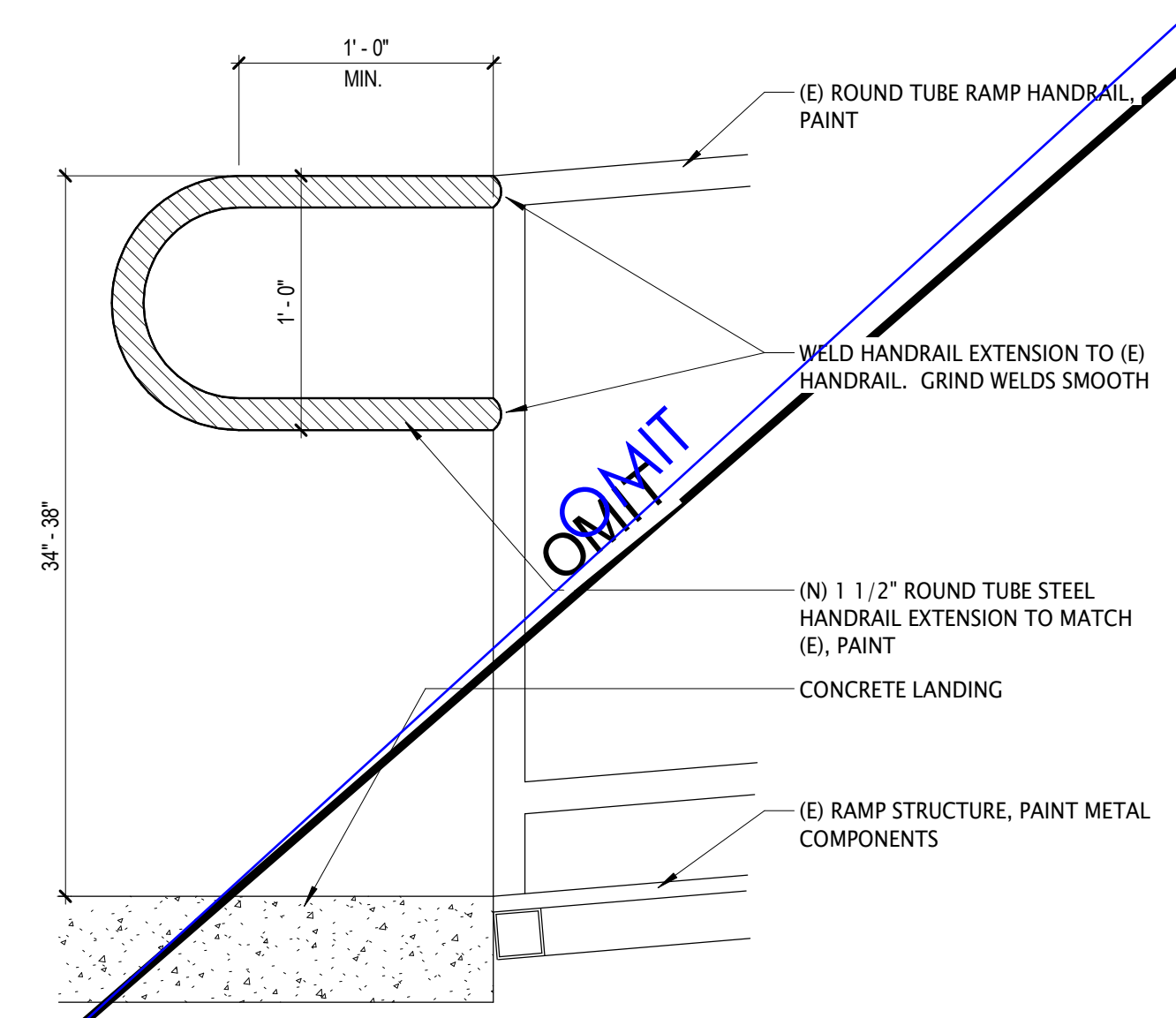
13 HANDRAIL AT RAMP TOP-SQUARE  
1 1/2" = 1'-0"



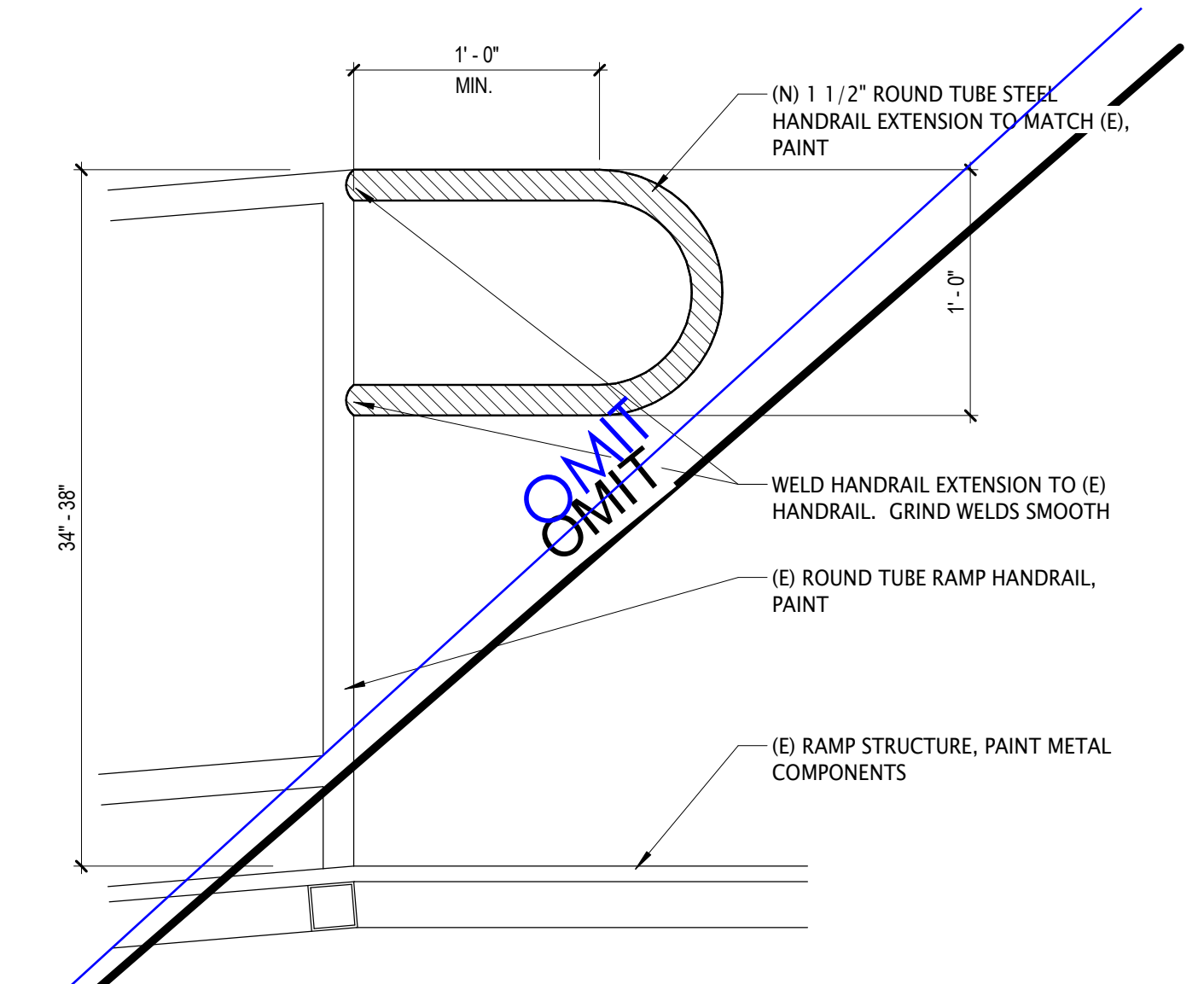
9 ACCESSIBLE & VAN ACCESSIBLE PARKING SPACES  
1:60



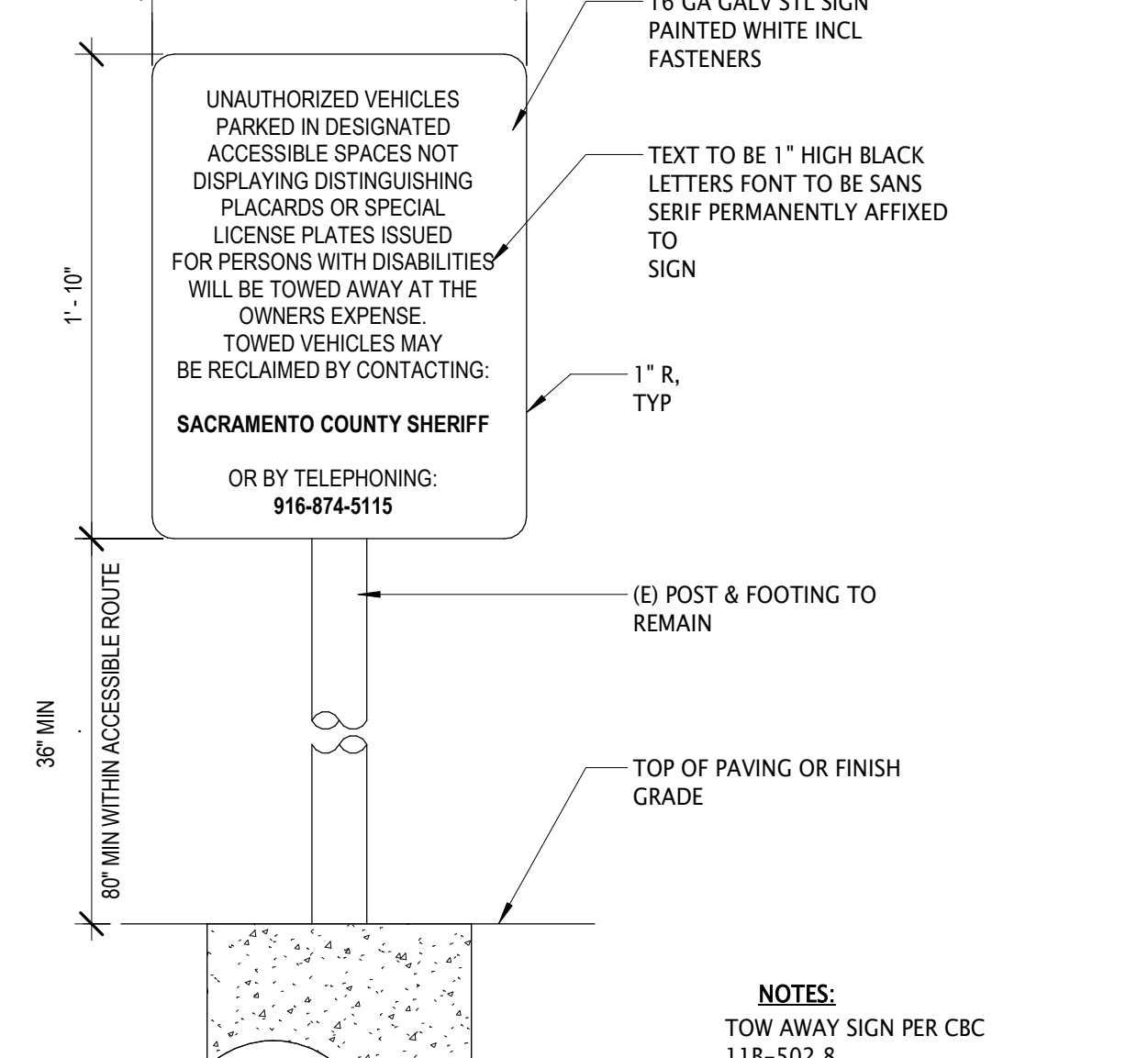
5 ACC - ISA PARKING SYMBOL  
1" = 1'-0"



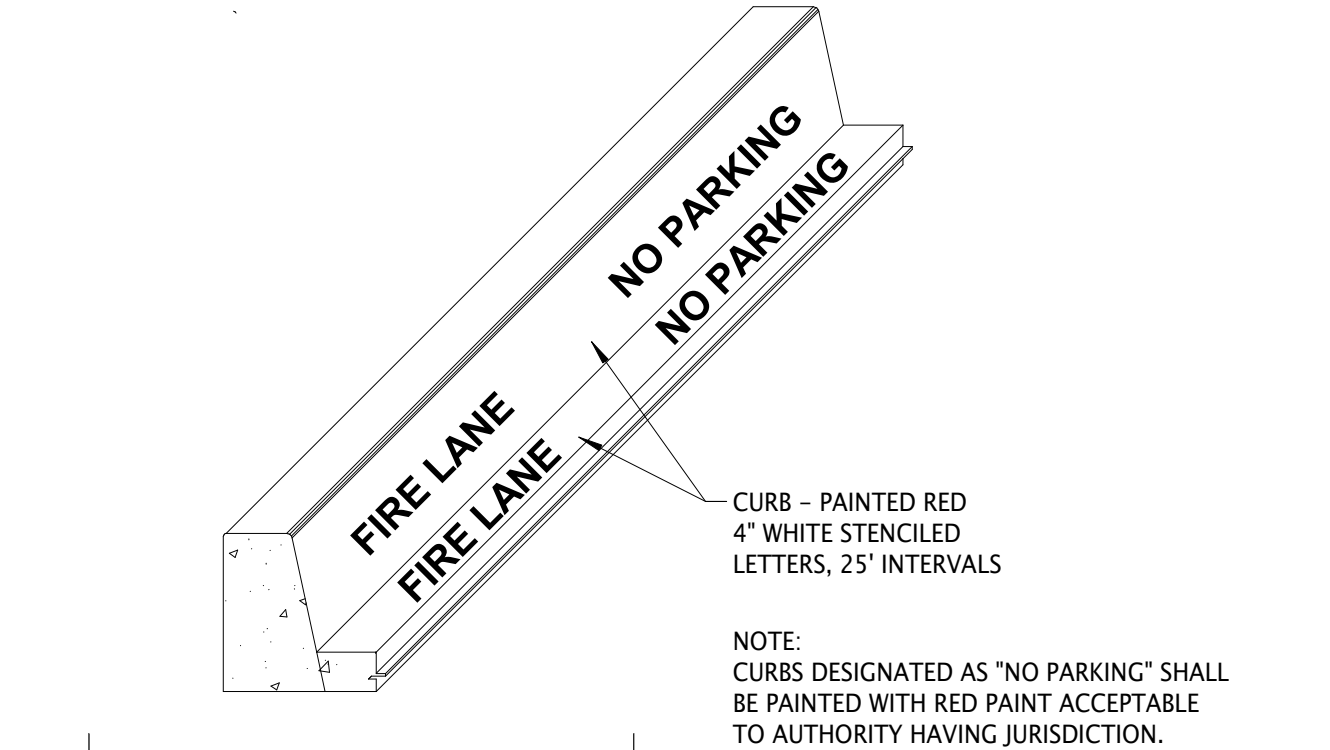
18 HANDRAIL AT RAMP BOTTOM-ROUND  
1 1/2" = 1'-0"



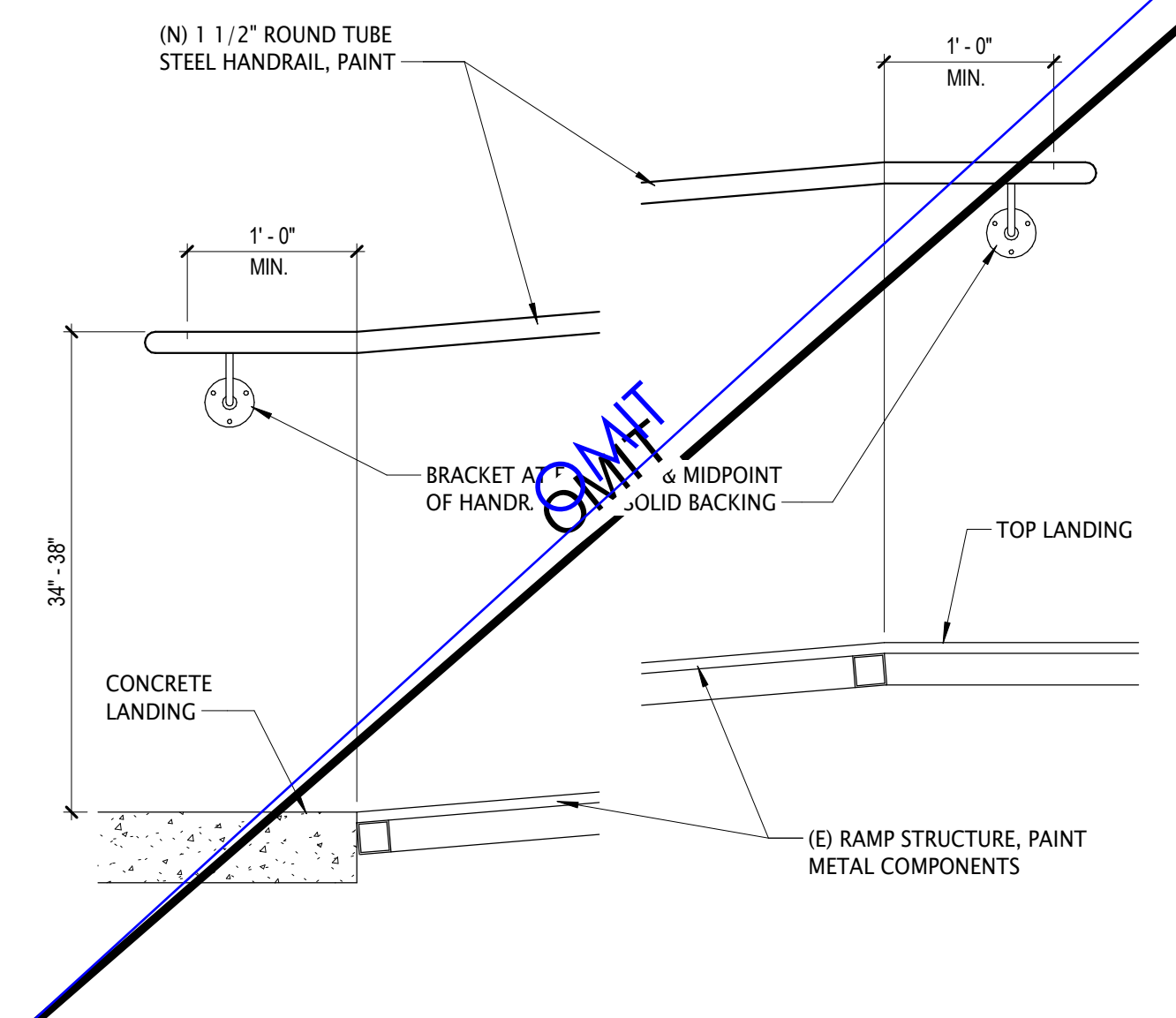
14 HANDRAIL AT RAMP TOP-ROUND  
1 1/2" = 1'-0"



10 ACC - EXISTING UNAUTHORIZED PARKING SIGN  
1 1/2" = 1'-0"



6 FIRE LANE CURB & MARKINGS  
1/4" = 1'-0"



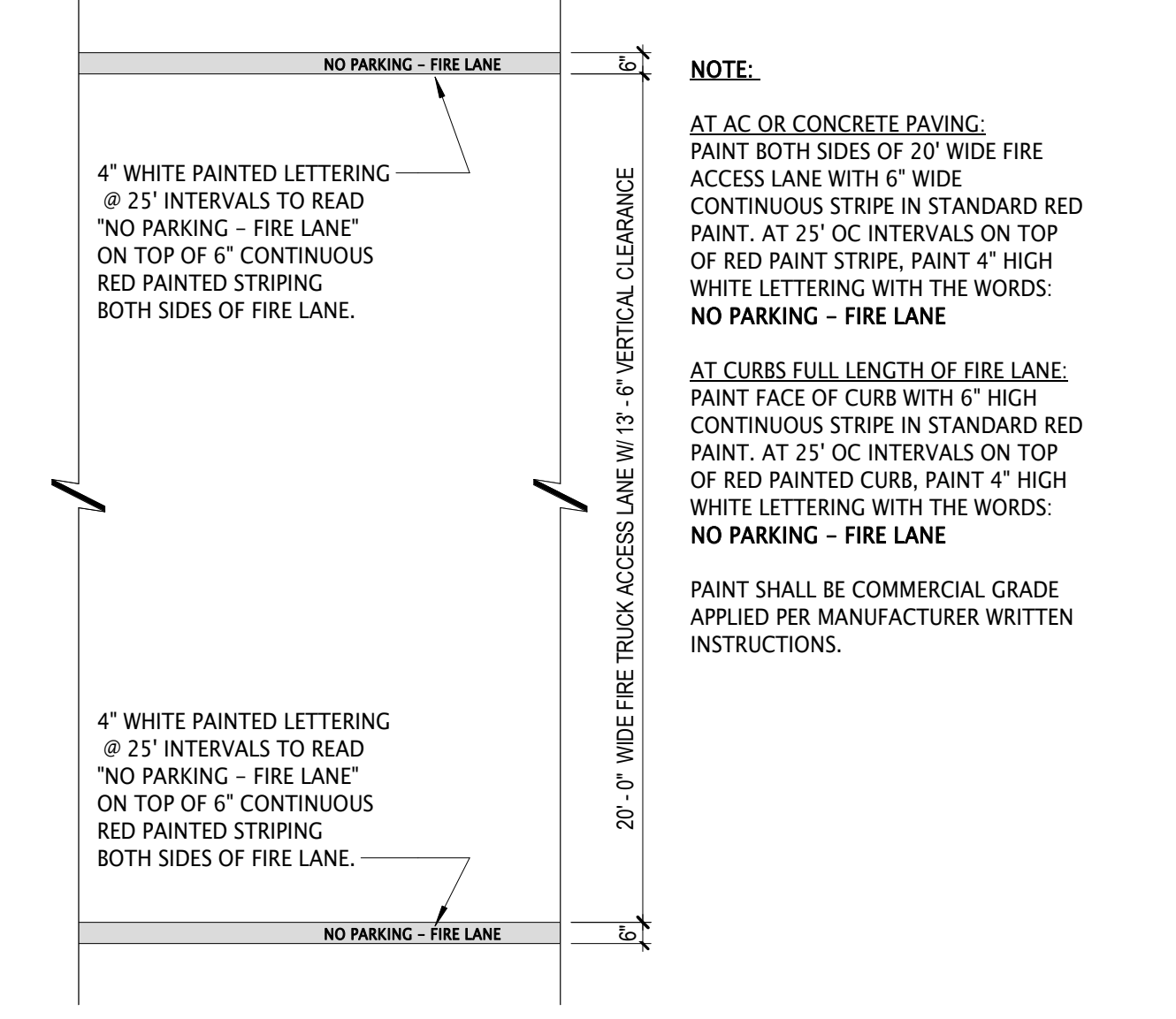
19 HANDRAIL-WALL MOUNTED  
1" = 1'-0"



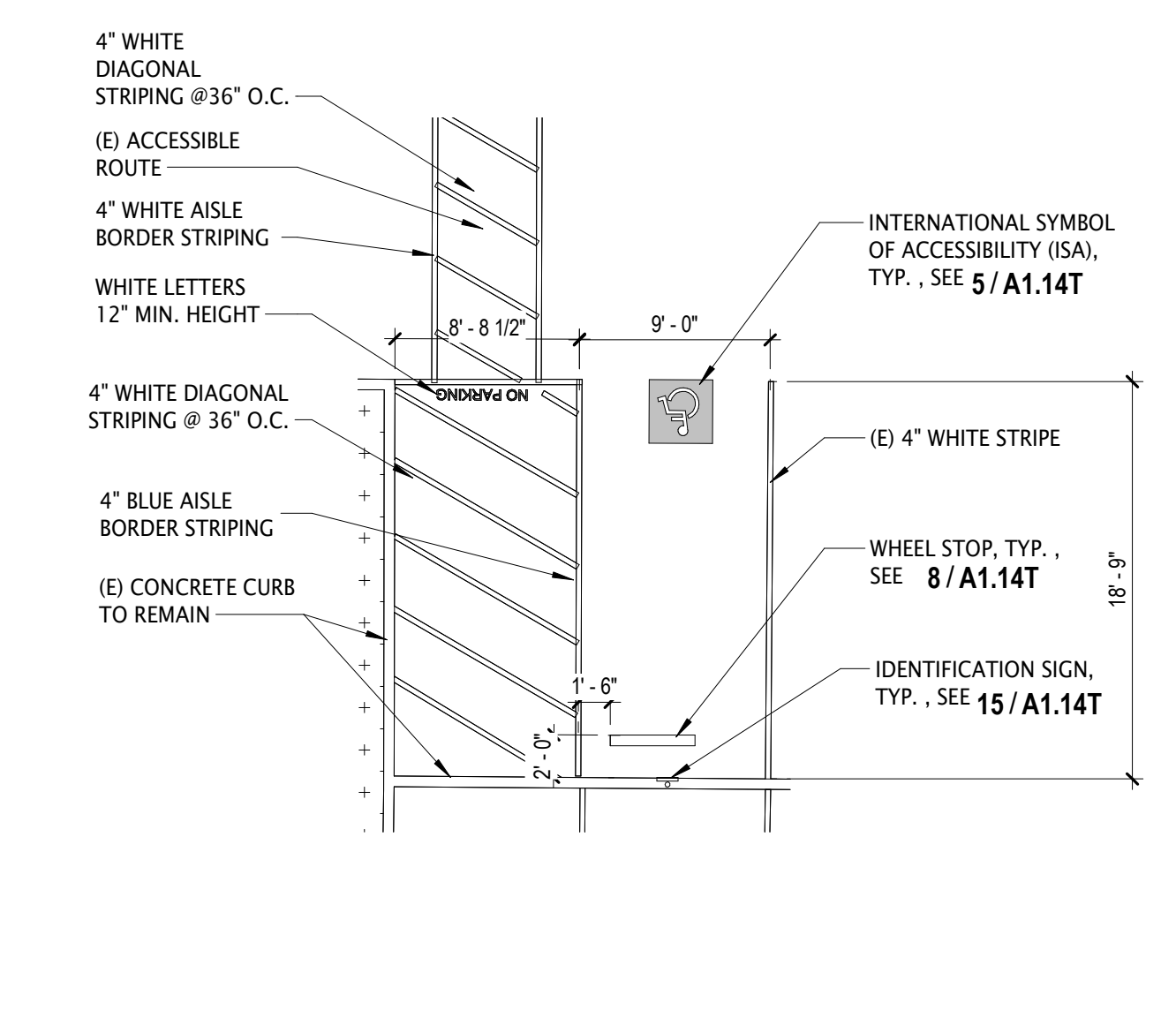
15 ACC - EXISTING ACCESSIBLE PARKING SIGNAGE  
1 1/2" = 1'-0"



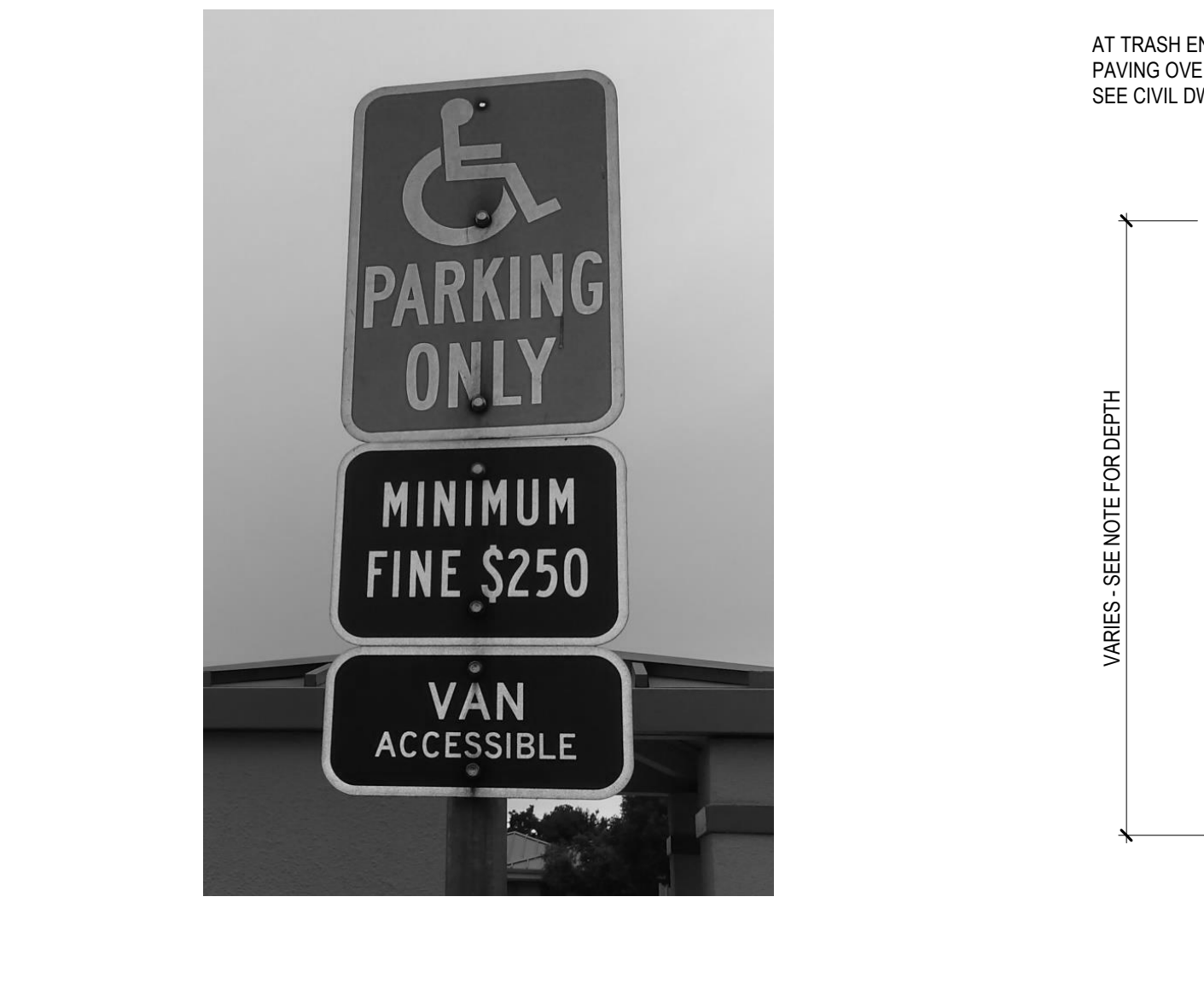
12 FENCE AND GATE POST FOOTING  
1 1/2" = 1'-0"



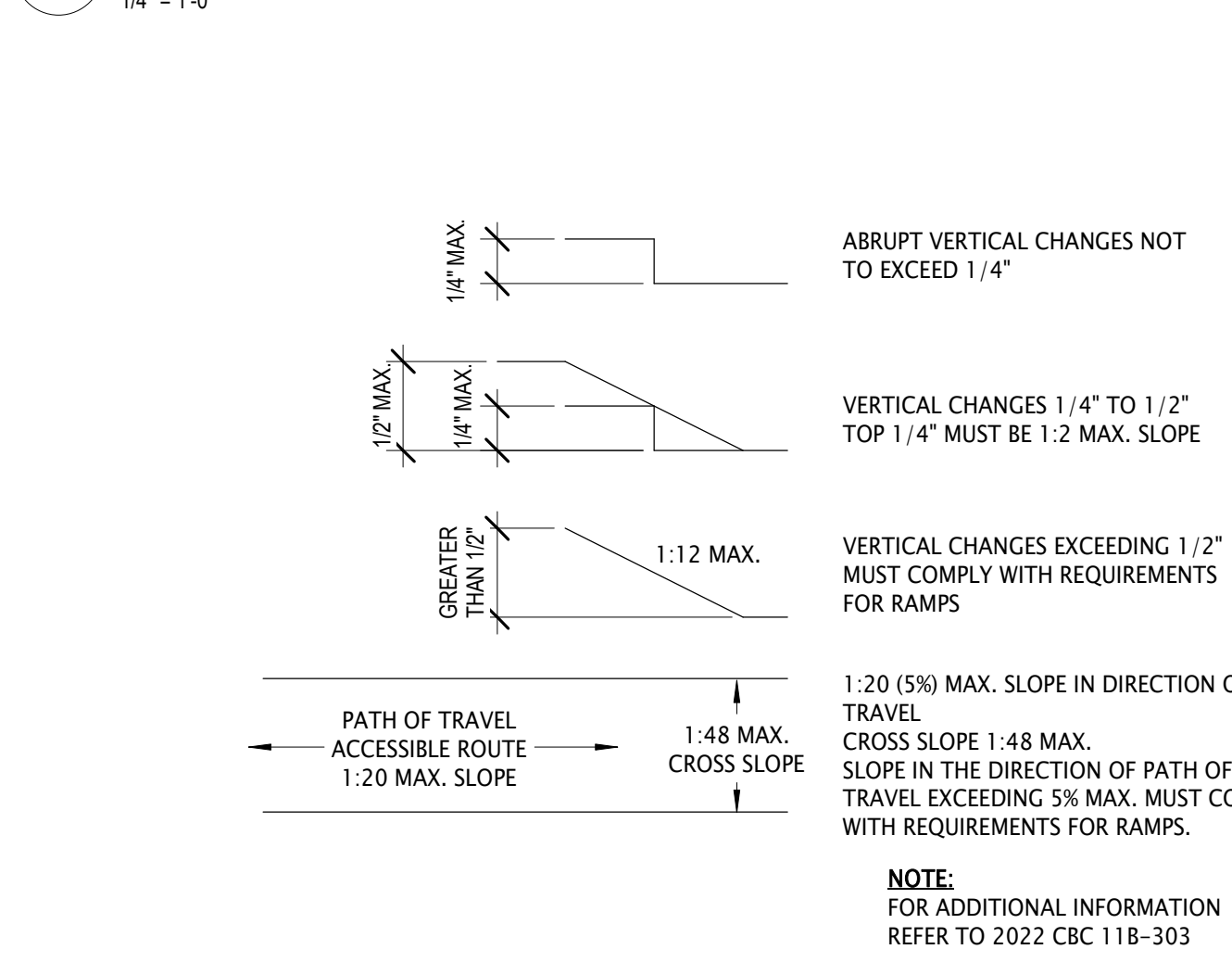
8 SITE - WHEEL STOP  
3" = 1'-0"



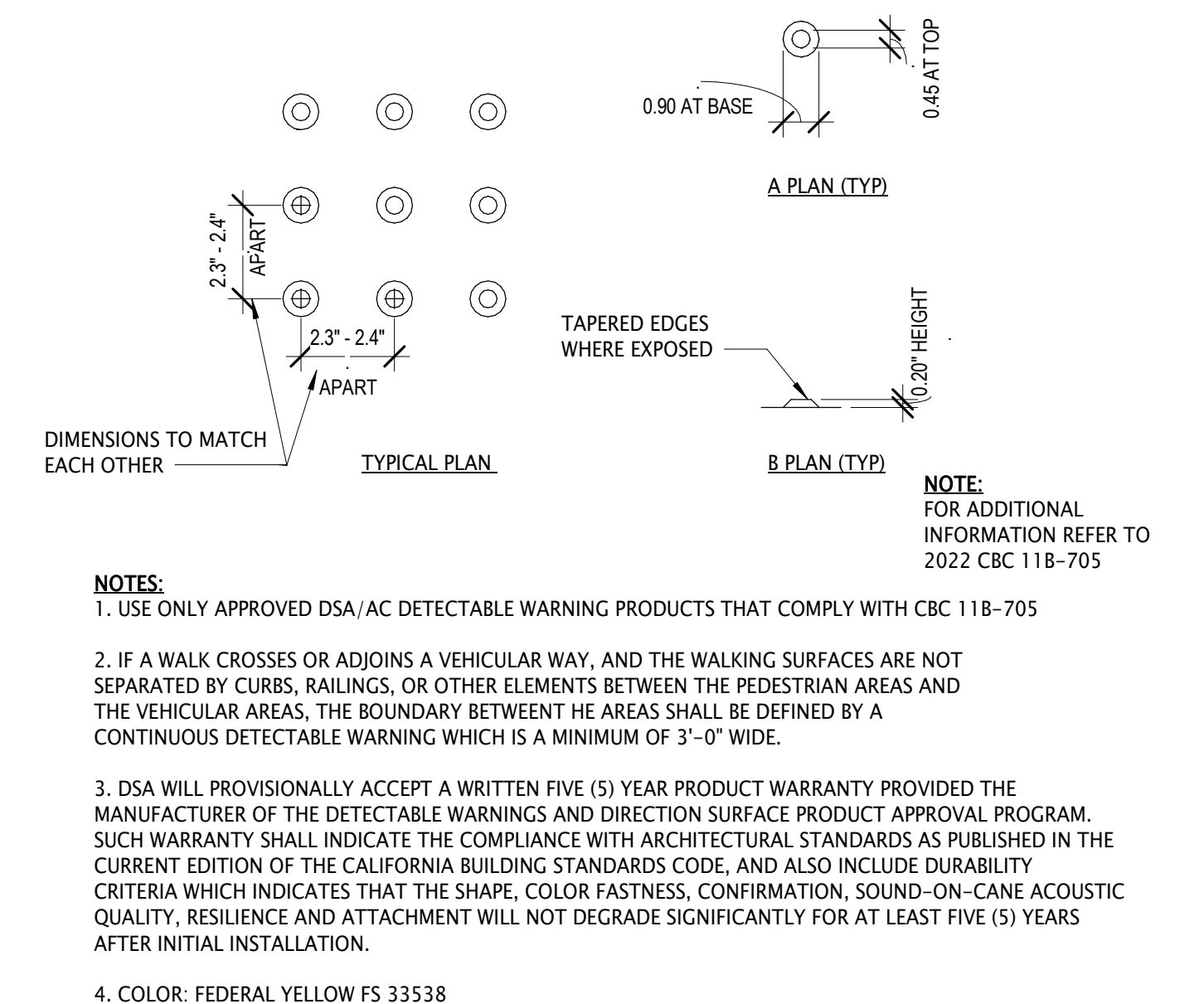
20 ACCESSIBLE PARKING SPACE  
1/8" = 1'-0"



16 ACC - EXISTING VAN ACCESSIBLE PARKING SIGNAGE  
1 1/2" = 1'-0"



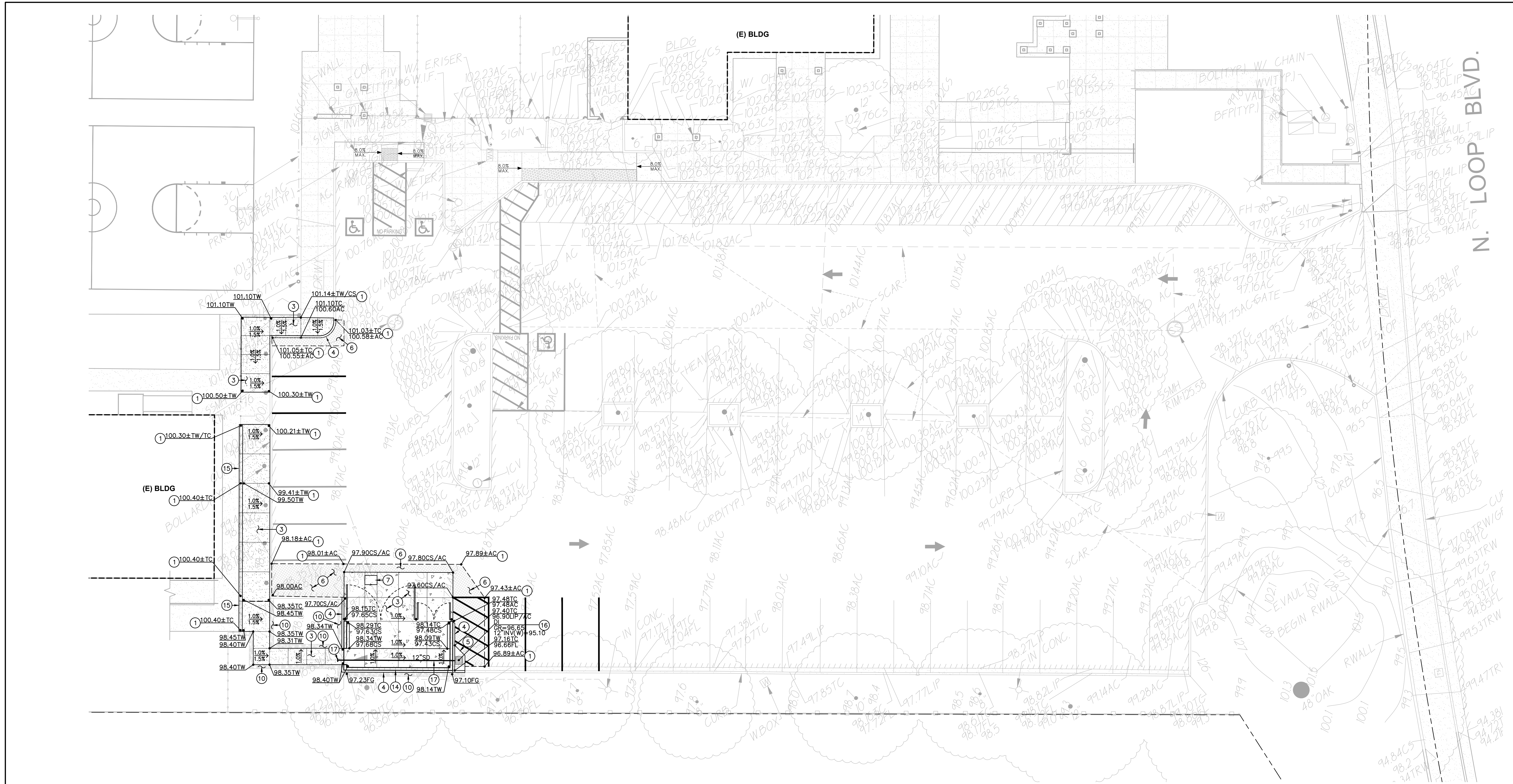
7 ACC - ACCESSIBLE ROUTES  
1/2" = 1'-0"



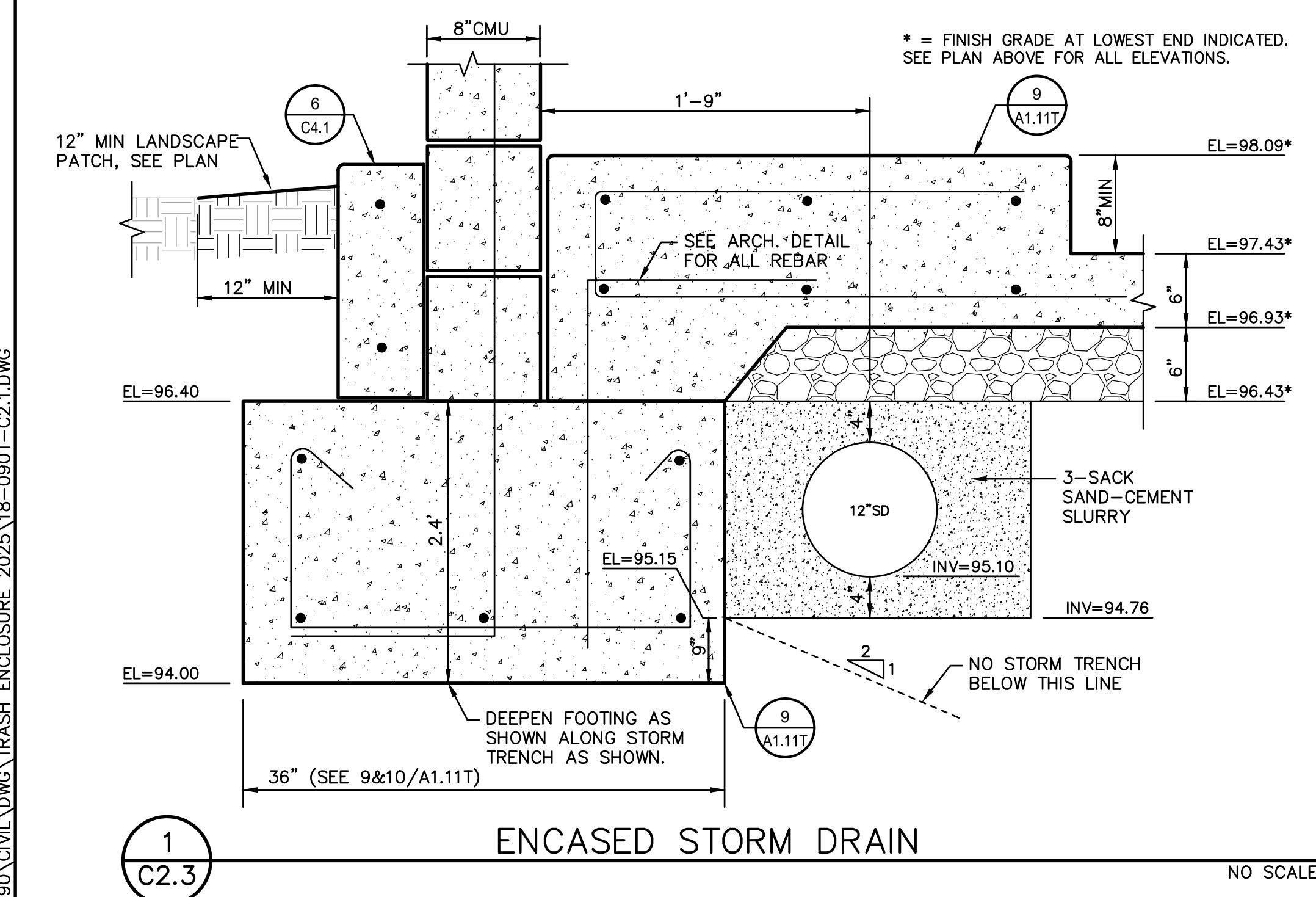
1 ACC - DETECTABLE WARNING SURFACE  
3" = 1'-0"







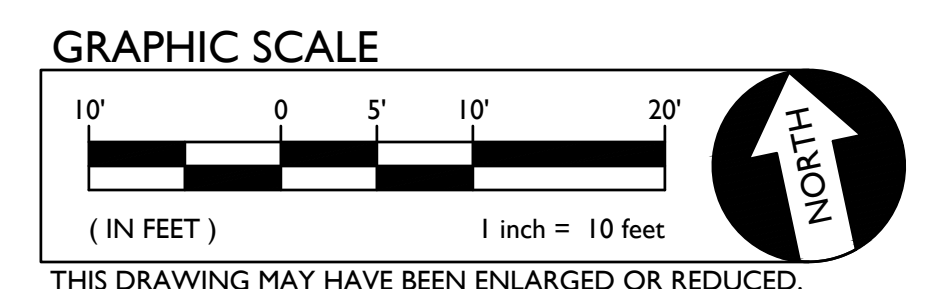
**1 GRADING PLAN** SCALE 1" = 10'-0"



**LEGEND GRADING AND DRAINAGE NOTES**

- NOT ALL NOTES MAY BE USED ON THIS SHEET
- MATCH EXISTING GRADE/ELEVATION, WHEN MATCHING NEW SLABS TO EXISTING, DOVEL SLABS PER THE DETAIL PROVIDED AT 24" O.C.
  - PLACE CONCRETE PAVING PER THE TYPICAL DETAILS PROVIDED. REFER TO PAVING PLAN FOR SECTIONS. REFER TO SPECIFICATIONS SECTION 31 00 00 FOR SUBGRADE PREPARATION, SECTION 32 16 00 FOR CONCRETE PAVING.
  - CONSTRUCT CONCRETE CURB PER THE DETAIL PROVIDED
  - CONSTRUCT 6" THICK CONCRETE GUTTER OVER 6" CLASS II AB ON COMPACTED SUBGRADE AROUND DRAIN INLET PER THE DETAIL PROVIDED.
  - ASPHALT PAVING. REFER TO PAVING PLAN FOR SECTIONS. REFER TO SPECIFICATIONS SECTION 32 12 00 FOR MATERIALS AND CONSTRUCTION. REFER TO SECTION 31 00 00 FOR SUBGRADE PREPARATION.
  - REMOVE EXISTING UTILITY BOX AND INSTALL NEW TRAFFIC RATED UTILITY BOX OF SAME SIZE AND APPROPRIATE FOR UTILITY. SET NEW BOX FLUSH WITH PROPOSED FINISHED GRADE. WHEN IN NEW CONCRETE AREAS, ALIGN WITH NEW JOINT PATTERNS WHEN POSSIBLE. ACCEPTABLE BOXES: OLD CASTLE OLD CASTLE B1017, B1324, OR B1730 OR APPROVED EQUAL. MARK FOR UTILITY.
  - PATCH BACK EXISTING LANDSCAPING AND IRRIGATION ALONG EDGES OF WORK TO MATCH EXISTING CONDITIONS. REPAIR ALL LATERALS AND REPLACE OR RELOCATE HEADS AS NEEDED FOR COVERAGE. PROVIDE NEW SOD IN LAWN AREAS OVER AMENDED AND PREPARED SOIL. SEE LANDSCAPE PLANS FOR ADDITIONAL INFO. IF NO LANDSCAPING EXISTING OR PROPOSED, PROVIDED EROSION HYDROSEED AT MINIMUM.
  - NEW CMU TRASH ENCLOSURE WITH CONCRETE SLAB AND METAL GATES. SEE ARCH PLANS.
  - CONSTRUCT RAISED CONCRETE CURB EDGE AT EXISTING FENCING PER THE DETAIL PROVIDED. TEMPORARILY REMOVE FENCING PANELS, REMOVE AND SALVAGE POSTS AND RE-INSTALL IN NEW RAISED CURB/APRON.
  - CONSTRUCT CURB TYPE DROP INLET PER THE DETAIL PROVIDED.
  - CONNECT AND EXTEND 12" STORM DRAIN TO NEW DRAIN INLET. STORM DRAIN TO BE FULLY ENCASED IN CONCRETE FOOTING WITH MIN. 6" CONCRETE SURROUNDING PIPE ON ALL SIDES.

**PAVEMENT SLOPE AT BUILDINGS**  
 IN ADDITION TO THE MAXIMUM SLOPES SHOWN, PAVING WITHIN 5 FEET OF BUILDING SHALL SLOPE AT LEAST 1% AWAY FROM BUILDING. GRADES HAVE BEEN DESIGNED TO PROVIDE AT LEAST THIS MINIMUM SLOPE. HOWEVER, CONTRACTOR SHALL VERIFY IN FIELD PRIOR TO POURING.



architect  
**AC MARTIN**  
 3099 DOUGLAS BLVD, SUITE 290  
 ROSEVILLE, CA 95661 | 916.772.1800

stamp

consultant  
**WCE**  
 WARREN CONSULTING ENGINEERS, INC.  
 1117 WINDFIELD WAY, SUITE 110  
 EL DORADO HILLS, CA 95762 | (916) 986-1870

REGISTERED PROFESSIONAL ENGINEER  
 ANTHONY J. TASSANO  
 No. C74882  
 State of California  
 04/15/2026

project number CA5602  
 project director  
 project designer  
 project architect

revisions  
 no. date revision  
 1/16/26 Bid Set

project status  
**DSA BACKCHECK**

client / project

**OAK HILL ES TRASH ENCLOSURE**

3909 NORTH LOOP ANTELOPE, CA 95843

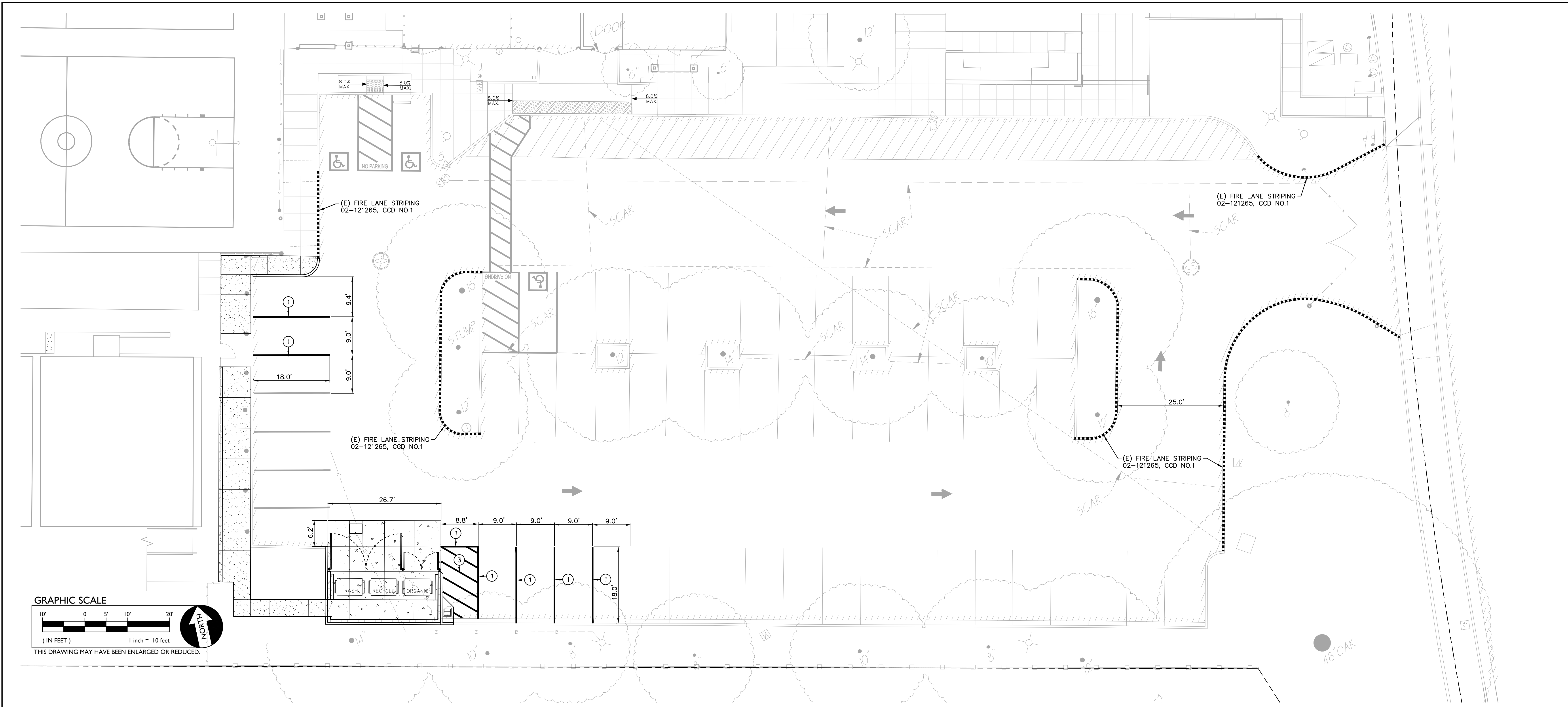
sheet name  
**GRADING PLAN**

sheet number  
**C2.1**

plot date 4/15/2026 9:24 AM

FILENAME: \\18-090\CIVIL\DWG\TRASH ENCLOSURE\_2025\18-090T-C2.1.DWG



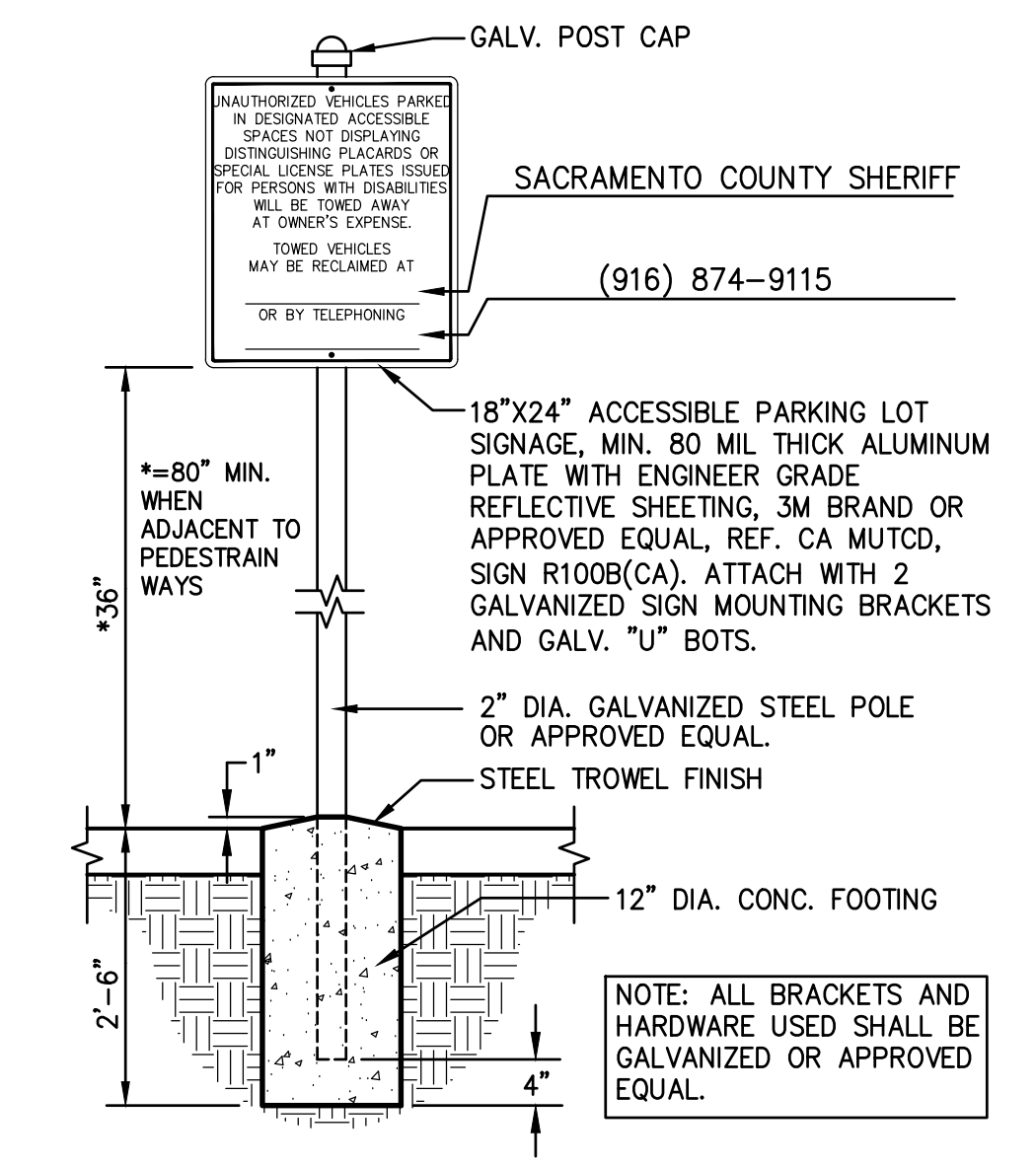


**1 STRIPING PLAN**

SCALE 1" = 10'-0"

**STRIPING SIGNAGE & EQUIPMENT LEGEND**

1. PAINT 4" WIDE WHITE STRIPING IN LAYOUT AND PER THE DIMENSIONS SHOWN, WHERE SHOWN.
2. PAINT 4" WIDE BLUE STRIPING AROUND PERIMETER OF ACCESSIBLE LOADING ZONE AS SHOWN.
3. PAINT WHITE CROSS HATCH STRIPING. STRIPES SHALL BE 4" WIDE AND 36" O.C. AND 30" FROM PERPENDICULAR WITH PERIMETER STRIPING.
8. EXISTING ACCESSIBLE PARKING TOW AWAY SIGN PER THE DETAIL PROVIDED. <sup>1</sup>/<sub>C3.2</sub>
9. PAINT CURB TOP AND FACE RED. ON FACE OF CURB, PAINT 4" TALL WHITE LETTERING STATING "NO PARKING - FIRE LANE" AT 25 FEET ON CENTER.



**1 PARKING AREA SIGN**  
C3.2 (CALIFORNIA ONLY) NO SCALE

architect  
**AC MARTIN**  
 3039 DOUGLAS BLVD, SUITE 200  
 ROSEVILLE, CA 95661 T 916 772 1800

stamp

consultant  
**WCE**  
 WARREN CONSULTING ENGINEERS, INC.  
 1117 WINDFIELD WAY, SUITE 110  
 EL DORADO HILLS, CA 95762 | (916) 985-1870

project number CA5602  
 project director -  
 project designer -  
 project architect -

revisions  
 no. date revision  
 1 4/16/26 Bid Set

project status  
**DSA BACKCHECK**

client / project  
**OAK HILL ES TRASH ENCLOSURE**

3909 NORTH LOOP  
 ANTELOPE, CA 95843

sheet name  
**STRIPING PLAN**

sheet number  
**C3.2**

plot date 4/15/2026 9:27 AM

FILENAME: \\18-090\CIVIL\DWG\TRASH ENCLOSURE\_2025\18-0901-C3.2.DWG

