



CROCHET | SKILL LEVEL: INTERMEDIATE

ABBREVIATIONS

Alt = Alternate(ing)

Approx =
Approximately

Beg = Beginning

Ch = Chain(s)

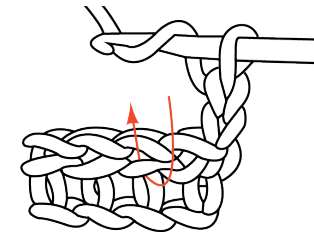
Dc = Double crochet

Dcbp = Yoh and draw up a loop around post of next stitch at back of work, inserting hook from right to left. (Yoh and draw through 2 loops on hook) twice

Dcfp = Yoh and draw up a loop around post of next stitch at front of work, inserting hook from right to left. (Yoh and draw through 2 loops on hook) twice

Hdc = Half double crochet

Hdchb = Work 1 hdc into horizontal bar created below in previous row (bar is below loops normally worked on WS – see diagram)



Pat = Pattern

PM = Place marker

Rep = Repeat

Rnd(s) = Round(s)

RS = Right side

Sc = Single crochet

Scbl = Single crochet in back loop only

Sl st = Slip stitch

Sp(s) = Space(s)

St(s) = Stitch(es)

Tog = Together

Tr = Treble crochet

Trfp = (Yoh) twice and draw up a loop around post of next stitch at front of work, inserting hook from right to left. (Yoh and draw through 2 loops on hook) 3 times.

Trbp = (Yoh) twice and draw up a loop around post of next stitch at back of work, inserting hook from right to left. (Yoh and draw through 2 loops on hook) 3 times.

WS = Wrong side

Yoh = Yarn over hook

MATERIALS

Red Heart® Super Saver™ (7 oz/198 g; 364 yds/333 m)

Main Color (MC) Aran (0313) **2 balls or 622 yds/565 m**

Contrast A Carrot (0256) **1 ball or 255 yds/230 m**

Contrast B Pale Plum (0579) **1 ball or 215 yds/195 m**

Contrast C Light Periwinkle (0347) **1 ball or 150 yds/135 m**

Contrast D Gold (0321) **1 ball or 205 yds/185 m**

Size U.S. J/10 (6 mm) Susan Bates® Silvalume® crochet hook **or size needed to obtain gauge.** Susan Bates® stitch markers. Susan Bates® yarn needle.

MEASUREMENTS

Approx 15½" x 73" [39.5 x 185.5 cm].

GAUGE

11.5 sc and 14 rows = 4" [10 cm].

INSTRUCTIONS

Notes:

- Scarf is made in Sections designed in steps that build onto each other with minimal seams. Each Section will begin with stitches worked onto sides or top edges of previous Sections.
- Ch 2 at beg of row **does not** count as stitch.
- Ch 3 at beg of row counts as dc.

SCARF

With A, ch 22.

Foundation row: (WS). 1 sc in 2nd ch from hook. 1 sc in each ch to end of chain. Turn. 21 sc.

Section 1-1

See Diagram 1.



*****1st row:** (RS). With A, ch 2. 1 hdc in each sc to end of row. Turn. 21 hdc.

2nd row: Ch 1. 1 sc in each of first 2 hdc. Ch 2. Skip next 2 hdc. 1 sc in each of next 2 hdc. (Ch 2. Skip next 2 hdc. 1 sc in next hdc) 3 times. 1 sc in each of next 2 hdc. Ch 2. Skip next 2 hdc. 1 sc in each of last 2 hdc. Turn.

3rd row: Ch 1. 1 sc in each of first 2 sc. 1 dcfp around post of each of next 2 sts 2 rows below. 1 sc in each of next 2 sc. Skip next 3 sts 2 rows below. 1 trfp around post of each of next 3 sts 2 rows below. *Working in front of 3 trfp just made*, 1 trfp around post of each of 3 skipped sts 2 rows below. 1 dcfp around post of each of next 3 sts 2 rows below. 1 sc in each of next 2 sts 2 rows below. 1 sc in each of last 2 sc. Turn.

4th and alt rows: Ch 1. 1 sc in each of first 2 sc. Ch 2. Skip next 2 sts. 1 sc in each of next 2 sc. (Ch 2. Skip next 2 sts. 1 sc in next st) 3 times. 1 sc in each of next 2 sc. Ch 2. Skip next 2 sts. 1 sc in each of last 2 sc. Turn.

5th row: Ch 1. 1 sc in each of first 2 sc. 1 dcfp around post of each of next 2 dcfp 2 rows below. 1 sc in each of next 2 sc. 1 dcfp around post of each of next 6 trfp 2 rows below. 1 dcfp around post of each of next 3 dcfp 2 rows below. 1 sc in each of next 2 sc. 1 dcfp around post of each of next 2 dcfp 2 rows below. 1 sc in each of last 2 sc. Turn.

7th row: Ch 1. 1 sc in each of first 2 sc. 1 dcfp around post of each of next 2 dcfp 2 rows below. 1 sc in each of next 2 sc. 1 dcfp around post of each post of next 3 dcfp 2 rows below. Skip next 3 dcfp. (1 trfp around post of next 3 dcfp 2 rows below. *Working behind 3 trfp just made*, 1 trfp around post of each of 3 skipped dcfp 2 rows below. 1 sc in each of next 2 sc. 1 dcfp around each of next 2 dcfp 2 rows below. 1 sc in each of last 2 sc. Turn.

9th row: Ch 1. 1 sc in each of first 2 sc. 1 dcfp around post of each of next dcfp 2 rows below. 1 sc in each of next 2 sc. 1 dcfp around post of each of next 3 dcfp 2 rows below. 1 dcfp around post of each of next 6 trfp 2 rows below. 1 sc in each of next 2 sc. 1 dcfp around post of each of next 2 dcfp 2 rows below. 1 sc in each of last 2 sc. Turn.

10th row: As 4th row.

Rep 3rd to 10th rows of Braided Cable Pat for 12" [30.5 cm], ending on 5th or 9th row.***

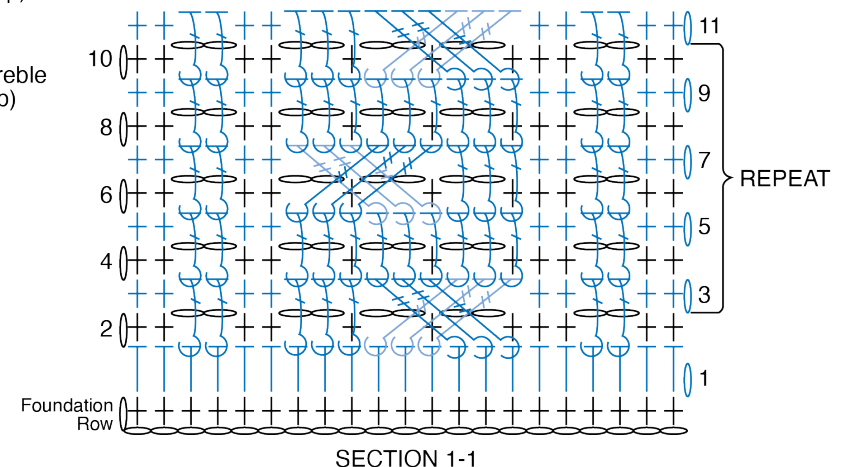
Turn work sideways.

Next row: (RS). With A, ch 2. Work 38 hdc evenly down left side of Section 1-1. Join B. Break A.

STITCH KEY

- = chain (ch)
- ⊕ = single crochet (sc)
- ⊥ = half double crochet (hdc)
- ⌋ = front post double crochet (dcfp)
- ⌋ = front post treble crochet (trfp)

DIAGRAM 1



Section 2-1

See Diagram 2.



****1st row:** With B, ch 2. 1 hdchb in previous row of each st to last hdc. (Bar is below loops normally worked on WS – see diagram on page 1). 1 hdc in last hdc. Turn.
Rep last row for approx 7¼" [19 cm] from color change edge,** ending on a WS row. Turn work sideways.
Next row: (WS). With B, ch 1. Work 21 sc evenly across top side edge of Section 2-1 ONLY. Join D. Break B. Turn. 21 sc.

Section 3-1

See Diagram 3.



*******1st row:** (RS). With D, ch 1. 1 sc in each sc to end of row. 21 sc. Turn.
2nd row: Ch 2. 1 hdc in each of first 2 sc. 1 dcbp around next sc. *1 hdc in each of next 3 sc. 1 dcbp around next sc. Rep from * to last 2 sc. 1 hdc in each of last 2 sc. Turn.
3rd row: Ch 2. 1 hdc in each of first 2 hdc. 1 dcfp around next dcbp. *1 dcbp around each of next 3 hdc. 1 dcfp around next dcbp. Rep from * to last 2 hdc. 1 hdc in each of last 2 hdc. Turn.

4th row: Ch 2. 1 hdc in each of first 2 hdc. 1 dcbp around next dcfp. *1 hdc in each of next 3 dcbp. 1 dcbp around next dcfp. Rep from * to last 2 hdc. 1 hdc in each of last 2 hdc. Turn.

Rep 3rd and 4th rows for Waffle Pat until work from color change measures 12" [30.5 cm],***** ending on WS row.
Turn work sideways.
Next row: (WS). With D, ch 2. Work 38 hdc evenly down right side of Section 3-1. Join C. Break D.

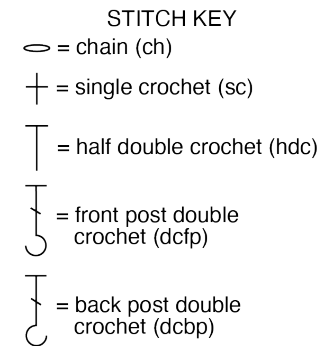
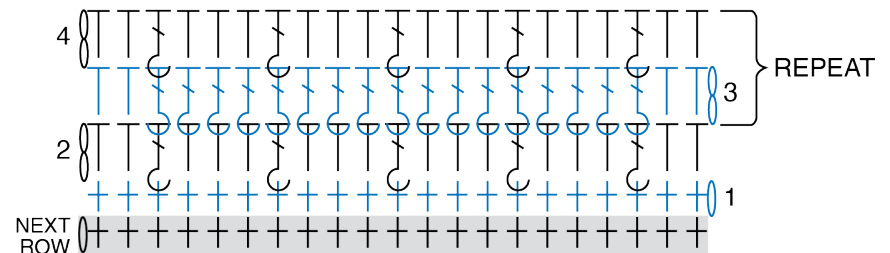
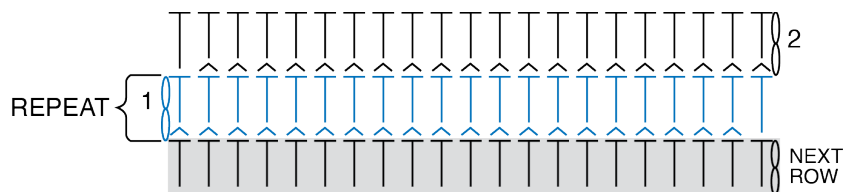


DIAGRAM 3

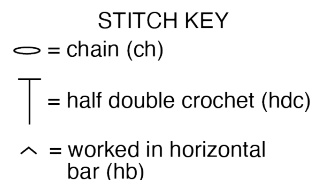


SECTION 3-1

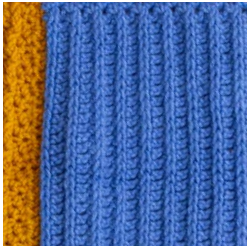
DIAGRAM 2



SECTION 2-1



Section 4-1



With C, work from ** to ** as given for Section 2-1, ending on a RS row. Turn work sideways.

Next row: (RS). With C, ch 1. Work 22 sc evenly across top side edge of Section 4-1. Join MC. Break C. Turn. 22 sc.

Section 5-1



See Diagram 4.

******1st row:** (WS). With MC, ch 2. 1 hdc in each sc to end of row. 22 hdc. Turn.

2nd row: Ch 2. 1 dc in first hdc. *Skip next 2 hdc. 1 trfp around each of next 2 hdc. Working in front of just worked sts, 1 trfp around each of 2 skipped hdc. Rep from * to last hdc. 1 dc in last hdc. Turn.

3rd row: Ch 2. 1 dc in first dc. 1 trbp around each of next 2 sts. *Skip next 2 sts. 1 trbp around each of next 2 sts. Working behind just worked sts, 1 trbp around each of 2 skipped sts. Rep from * to last 3 sts. 1 trbp around each of next 2 sts. 1 dc in last dc. Turn.

4th row: Ch 2. 1 dc in first dc. *Skip next 2 sts. 1 trfp around each of next 2 sts. Working in front of just worked sts, 1 trfp around each of 2 skipped sts. Rep from * to last dc. 1 dc in last dc. Turn.

Rep 3rd and 4th rows for Celtic Texture Pat until work from color change measures 12" [30.5 cm],**** ending on RS row. Turn work sideways.

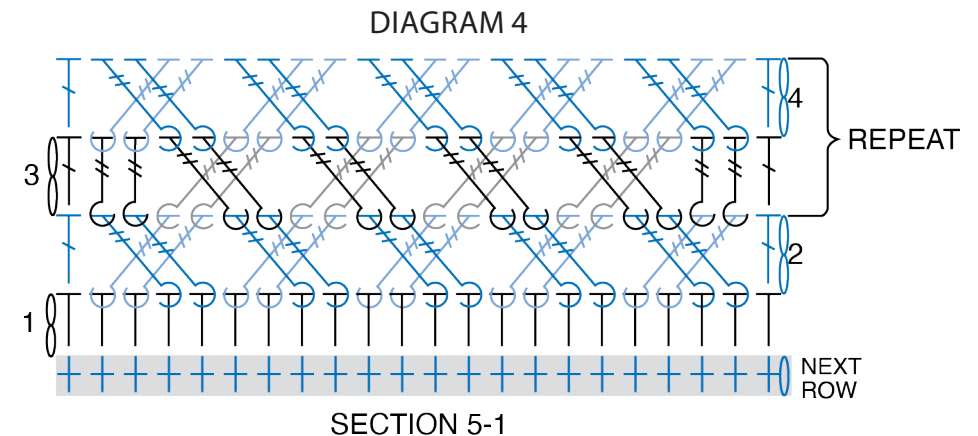
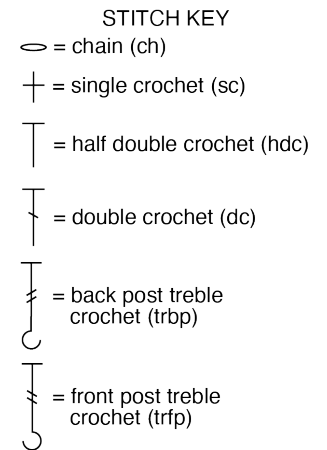
Next row: (RS). With MC, ch 2. Work 38 hdc evenly down left side of Section 5-1. Join A. Break MC.

Section 2-2



With A, work from ** to ** as given for Section 2-1, ending on a WS row. Turn work sideways.

Next row: (WS). With A, ch 1. Work 21 sc evenly across top side edge of Section 2-2 ONLY. Join C. Break A. Turn. 21 sc.



Section 6-1



See Diagram 5.

1st row: (RS). With C, ch 1. 1 sc in each sc to end of row. Turn. 21 sc.

2nd row: Ch 1. 1 sc in each of first 2 sc. PM around post of last sc made. *1 sc in each of next 5 sts. PM around post of last sc made. 1 sc in next st. PM around post of last sc made. Rep from * to last 7 sc. 1 sc in each of next 5 sc. PM around post of last sc made. 1 sc in each of last 2 sc. Turn.

3rd and 4th rows: Ch 1. 1 sc in each sc to end of row. Turn.

5th row: Ch 1. 1 sc in each of first 4 sc. 1 trfp around first marked sc 3 rows below. 1 trfp around next marked sc 3 rows below. *Working in top of 4th row, skip next 2 sc.* *1 sc in each of next 4 sc. (1 trfp around next marked sc 3 rows below) twice. *Working in top of 4th row, skip next 2 sc.* Rep from * to last 3 sc. 1 sc in each of last 3 sc. Turn.

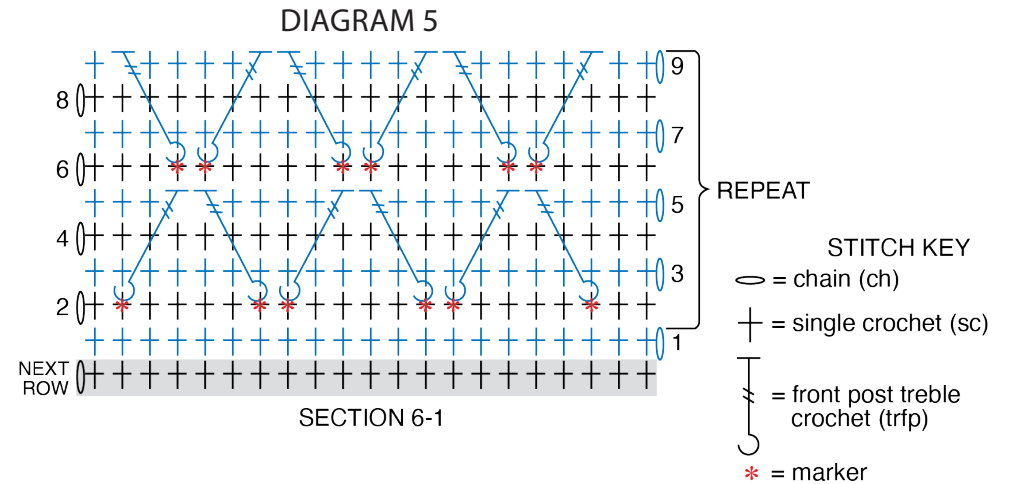
6th row: Ch 1. 1 sc in each of first 4 sts. *PM around post of last sc made. 1 sc in next st. PM around post of last sc made. 1 sc in each of next 5 sts. Rep from *, ending last rep with 1 sc in each of last 4 sc. Turn.

7th and 8th rows: Ch 1. 1 sc in each sc to end of row. Turn.

9th row: Ch 1. 1 sc in each of first 2 sc. 1 trfp around first marked sc 3 rows below (6th row). *Working in top of 8th row, skip next sc.* 1 sc in each of next 4 sc. *(1 trfp around next marked sc 3 rows below) twice. *Working in top of 8th row, skip next 2 sc.* 1 sc in each of next 4 sc. Rep from * to last 2 sc. 1 trfp around next marked sc 3 rows below. *Working in top of 8th row, skip next sc.* 1 sc in last sc. Turn.

Rep 2nd to 9th rows for Lattice Pat until work from color change measures 12" [30.5 cm], ending on WS row.

Turn work sideways.
Next row: (WS). With C, ch 2. Work 38 hdc evenly down right side of Section 6-1. Join B. Break C.



Section 4-2



With B, work from ** to ** as given for Section 2-1, ending on a RS row. Turn work sideways.

Next row: (RS). With B, ch 1. Work 21 sc evenly across top side edge of Section 4-2. Join A. Break B. Turn. 21 sc.

Section 1-2



Set up row: (WS). With A, 1 sc in each sc to end of row. With A, work from *** to *** as given for Section 1-1. Turn work sideways.

Next row: (RS). With A, ch 2. Work 38 hdc evenly down left side of Section 1-2. Join D. Break A.

Section 2-3



With D, work from ** to ** as given for Section 2-1, ending on a WS row. Turn work sideways.

Next row: (WS). With D, ch 1. Work 22 sc evenly across top side edge of Section 2-3 ONLY. Join MC. Break D. Turn. 22 sc.

Section 5-2



Set up row: (RS). With MC, 1 sc in each sc to end of row.

Work from **** to **** as given for Section 5-1, ending on a WS row.

Turn work sideways.

Next row: (WS). With MC, ch 2. Work 38 hdc evenly down right side of Section 5-2. Join B. Break MC.

Section 4-3



With B, work from ** to ** as given for Section 2-1, ending on a RS row. Fasten off.

FINISHING

Sew any sections that were not attached "as you go" using matching color and whip stitch. Pin Scarf on a flat surface to measurements (Approx 15" x 72" [38 x 183 cm]). Cover with a damp cloth leaving cloth to dry.

Edging: 1st rnd: (RS). Join D with sl st to top right corner. Ch 1. 2 sc in same sp as sl st. Work 21 sc evenly across top side edge of Section 4-3. Work 21 sc evenly across top edge of Section 5-2. 3 sc in corner. Work 38 sc across each of next 6 Sections down left side of Scarf. 3 sc in corner. Work 21 sc evenly across bottom side edge of Section 2-1. Work 21 sc evenly across bottom edge of Section 1-1. 3 sc in corner. Work 38 sc evenly across each of next 6 Sections up right side of Scarf. 1 sc in same sp as first 2 sc. Break D. Join MC with sl st to first sc.

2nd and 3rd rnds: With MC, ch 1. 1 scbl in each sc around working 3 scbl in each corner sc. Join with sl st to first sc. Fasten off at end of 3rd rnd.

