



Developer Fee Justification Study

Evergreen Union School District

May 12, 2026

Prepared for:

Evergreen Union School District

19500 Learning Way
Cottonwood, CA 96022
530.347.3411

Prepared by:

King Consulting

2901 35th St.
Sacramento, CA 95817
916.706.3538
www.kinginc.com

TABLE OF CONTENTS

EXECUTIVE SUMMARY	2
DEVELOPER FEES: BACKGROUND	3
LEGISLATIVE HISTORY	4
AB 2926	4
AB 1600	4
AB 181	5
DEVELOPER FEE JUSTIFICATION: RESIDENTIAL DEVELOPMENT	6
Evergreen Union School District	6
Projected Residential Development	6
Student Generation Rates.....	7
Projected School Facilities Needs	7
New Construction Cost vs. Modernization/Reconstruction	8
DEVELOPER FEE JUSTIFICATION: COMMERCIAL/INDUSTRIAL PROJECTS	10
Senior Housing	10
Commercial/Industrial Development Fee Calculations	10
SUMMARY AND FINDINGS.....	14
ADMINISTRATION OF THE FEES	15
Administrative Requirements	15
Reporting Requirements.....	15
Government Code Section 66001 (a) (1): Purpose of Fees.....	15
Government Code Section 66001 (a) (2): Use of Fees.....	15
Government Code Section 66001 (a) (3): Reasonable Relationship between the Fee’s Use and the Type of Development Project on which the Fee is Imposed	16
Government Code Section 66001 (a) (4): Reasonable Relationship Between the Need for the Public Facility and the Type of Project Upon Which the Fee is Imposed	16
Government Code Section 66001 (b): Reasonable Relationship Between the Amount of the Fee and the Cost of the Public Facility.....	17
REVENUE SOURCES/FUNDING FACILITIES	18
State School Facility Program	18
General Obligation Bonds.....	18
Parcel Taxes	18
Mello-Roos Community Facilities Districts	18

RECOMMENDATIONS 19

SOURCES 20

LIST OF TABLES

Table 1. Student Generation Rates and Students Generated.....	7
Table 2. Housing Units and Calculation of Weighted Square Footage	8
Table 3. Cost per Student for New Construction	8
Table 4. District Total Modernization/Reconstruction Need.....	9
Table 5. District Modernization/Reconstruction Facilities Cost per Square Foot.....	9
Table 6. Commercial/Industrial Employee Generation Factors.....	11
Table 7. Commercial/Industrial Base Cost per Square Foot (Except Mini-Storage)	11
Table 8. Mini-Storage Base Cost per Square Foot	12
Table 9. Commercial/Industrial Residential Fee Offset (Except Mini-Storage)	12
Table 10. Mini-Storage Residential Fee Offset	12
Table 11. Commercial/Industrial Final Costs per Square Foot.....	13

EXECUTIVE SUMMARY

The Evergreen Union School District (EUSD, or “the District”) serves a portion of unincorporated Tehama County. The District serves a total of 1,212 TK-12th grade students at two elementary schools, one middle school, one community day school program, and one TK-12th grade charter school operating in a District-owned site.

In January 2026, the State Allocation Board’s biennial inflation adjustment changed the fee to \$5.38 per square foot for residential construction and \$0.87 per square foot for commercial/industrial construction. The District splits its collected developer fees with the Red Bluff Joint Union High School District, with EUSD retaining 60% of the collected fee. The following Developer Fee Justification Study demonstrates the District is justified in collecting 60% of the statutory Level I residential (\$3.23) and statutory commercial/industrial (\$0.52) fees on future development based on the following analysis:

- The District’s total enrollment at its school sites in 2025-26 was 1,212 students;
- The Tehama County General Plan estimates a total of 133 new residential units to be constructed within the District over the next twenty years;
- It is estimated that the average square footage of new homes will be 1,805 square feet;
- Based on an analysis of District enrollments and housing units, each new residence will generate students at a rate of 0.306 TK-12th grade students per unit;
- The 133 new units are projected to generate 41 TK-12th grade students for the District to house;
- Many District facilities are over 25 years old and in need of construction or reconstruction to continue housing existing students and students generated by new development at the existing level of service over the next 20 years;
- It is fiscally more prudent to extend the useful life of an existing facility than to construct new facilities when possible;
 - The cost to modernize facilities is approximately 38.4% of the cost to construct new facilities;
 - The total estimated cost to reconstruct and/or modernize facilities for the students generated from new development is \$1,979,275;
- Based on the cost of reconstructed school facilities, the impact equates to \$8.24 per square foot of residential development, which exceeds the statutory maximum;
- All categories of commercial/industrial development except for mini-storage create a modernization/reconstruction cost to the District of \$1.18 per square foot, which exceeds the statutory maximum;
- Mini-storage construction creates a cost of \$0.03 per square foot;
- The District is justified to adopt its proportional share (60%) of statutory Level I Developer Fees, currently \$5.38 per square foot for residential construction and \$0.87 per square foot for commercial/industrial construction, which equals a District fee of \$3.23 per square foot for residential construction and \$0.52 per square foot of commercial/industrial construction, except for mini-storage construction, for which the justified fee is \$0.03 per square foot.

DEVELOPER FEES: BACKGROUND

School districts are continually evaluating the condition of their capital facilities and identifying whether construction of new facilities and/or improvements to existing facilities are necessary to sufficiently house their student body. Districts may use various sources of funds for these capital facility projects, including Developer Fees, State program funds, redevelopment funds, certificates of participation, sale of capital assets, and mitigation measures. In September 1986, the Governor signed into law Assembly Bill 2926 (Chapter 887/Statutes 1986), which granted school district governing boards the authority to impose developer fees (hereinafter, “Developer Fees” or “School Fees”). This authority is codified in Education Code Section 17620, et seq. which states in part “...the governing board of any school district is authorized to levy a fee, charge, dedication or other requirement against any construction within the boundaries of the district for the purpose of funding for the construction or reconstruction of school facilities.”

School districts were provided a mechanism to assist in funding with the adoption of the Mitigation Fee Act (Government Code Section 66000 et seq.). This act governs the imposition of Developer Fees by a district as a condition of approval of a development project. In order to impose such a fee, a reasonable connection must exist between the impact on school facilities from new development and the construction/and or improvement of school facilities for which the fees are to be assessed.

Level I fees (also known as statutory fees) are adjusted every two years according to the inflation rate for Class B construction as determined by the State Allocation Board. With the passage of SB50 in 1998, a cap was placed on the amount that could be charged under the Level I fee calculation. The law allowed for adjustments of the cap as noted in Government Code Section 65995(b)(3), which specifies in part that “...fees shall be increased every two years, according to the adjustment for inflation set forth in the statewide cost index for Class B Construction, as determined by the State Allocation Board at its January meeting, which increase shall be effective as of the date of that meeting.”

Level II developer fees are authorized by Government Code Section 65995.5 and allow a school district to impose a higher fee on residential construction only if certain conditions can be met and a study conducted to provide justification for the higher residential fee per square foot.

As of January 2026, Government Code Section 65995 authorizes school districts to collect Developer Fees on future development of no more than \$5.38 per square foot for residential construction and \$0.87 for commercial/industrial construction (Level I fees).

Over the last several years, the Legislature has introduced legislation governing the addition of living areas attached or detached from the primary single-family or multifamily dwelling unit (generally referred to Accessory Dwelling Units (ADUs), and Junior Accessory Dwelling Units (JADUs)). Whether these types of dwelling units are called casitas, granny flats, in-law units, accessory units, or converted living space, these constructed areas are intended to provide an area for living and sleeping – whether the facilities and provisions for living, sleeping, eating, cooking, and sanitation are within that living space or within (or adjacent to) the attached single-family or multifamily dwelling unit. The construction of ADUs and JADUs over 500 square feet qualifies as residential development that generates students, and the District will levy the appropriate fee rate for these types of project when permissible to the extent allowed by law.

The content of this Study will show that the Evergreen Union School District is justified in levying its 60% share of the statutory Level I Developer Fee amount currently authorized by the State Allocation Board.

LEGISLATIVE HISTORY

State legislation, specifically AB 2926 and AB 1600, provides guidelines, procedures, and restrictions on the levy of School Fees for school facilities. Certain provisions of this legislation and history are summarized below:

AB 2926

AB 2926 was enacted by the State in 1986. Among other things, AB 2926 added various sections to the Government Code which authorize school districts to levy School Fees on new residential and commercial/industrial developments in order to pay for school facilities. In addition, AB 2926 provides for the following:

1. No city or county can issue a building permit for a development project unless such School Fees have been paid.
2. School Fees for commercial/industrial development must be supported by the finding that such School Fees "are reasonably related and limited to the needs for schools caused by the development."
3. School Fees for 1987 were limited to \$1.50 per square foot on new residential construction and \$0.25 per square foot for new commercial/industrial construction.
4. Every year, School Fees are subject to annual increases based on the Statewide cost index for Class B construction, as determined by the SAB at its January meeting (This provision was changed to every other year by AB181).

The provisions of AB 2926 have since been expanded and revised by AB 1600.

AB 1600

AB 1600, which created Sections 66000 et seq. of the Government Code, was enacted by the State in 1987. AB 1600 requires that all public agencies satisfy the following requirements when establishing, increasing or imposing a fee as a condition of approval for a development project.

1. Determine the purpose of the fee.
2. Identify the facilities to which the fee will be put.
3. Determine that there is a reasonable relationship between the need for public facilities and the type of development on which a fee is imposed.
4. Determine that there is a reasonable relationship between the amount of the fee and the public facility or portion of the public facility attributable to the development on which the fee is imposed.
5. Provide an annual accounting of any portion of the fee remaining unexpended, whether committed or uncommitted, in the School District's accounts five or more years after it was collected.

In other words, AB 1600 limits the ability of a school district to levy School Fees unless (i) there is a need for the School Fee revenues generated and (ii) there is a nexus or relationship between the need for School Fee revenues and the type of development project on which the School Fee is imposed. (The requirements of AB 1600 were clarified with the passage in 2006 of AB 2751, which codifies the findings of *Shapell Industries vs. Milpitas Unified School District*.) The Study will provide information necessary to establish such a nexus between School Fees and residential development.

AB 181

AB 181, enacted by the State in 1989, made significant changes in several State Codes, including Sections 53080 et seq. of the Government Code which was re-codified as Sections 17620 et seq. of the Education Code on January 1, 1998. Changes in Section 53080 included additional requirements and procedures for imposing School Fees and other conditions on new development. Specifically, AB 181 imposes more stringent nexus requirements on school districts that wish to levy School Fees on Commercial Industrial Development ("CID"), as follows:

1. In order to levy a School Fee on CID, a formal study must be conducted to determine the impact of "the increased number of employees anticipated to result" from new CID on the "cost of providing school facilities within the School District".
2. Only that portion of the School Fee justified by the "nexus findings" contained in this study may be levied. Nexus findings must be made on an individual project basis or on the basis of categories of CID and must "utilize employee generation estimates that are based on commercial/industrial factors within the school district."
3. Categories to be evaluated may include, but are not limited to, office, retail, transportation, communications and utilities, light industrial, heavy industrial, research and development, and warehouse uses.
4. Starting in 1990, maximum School Fees for residential and CID will be subject to increases every two (2) years rather than annually.
5. An appeals procedure shall be established whereby the levy of School Fees on a commercial/industrial project may be appealed to the governing board of a school district. Grounds for an appeal must include, but are not limited to, improper project classification by commercial/industrial category, or the application of improper or inaccurate employee or student generation factors to the project.

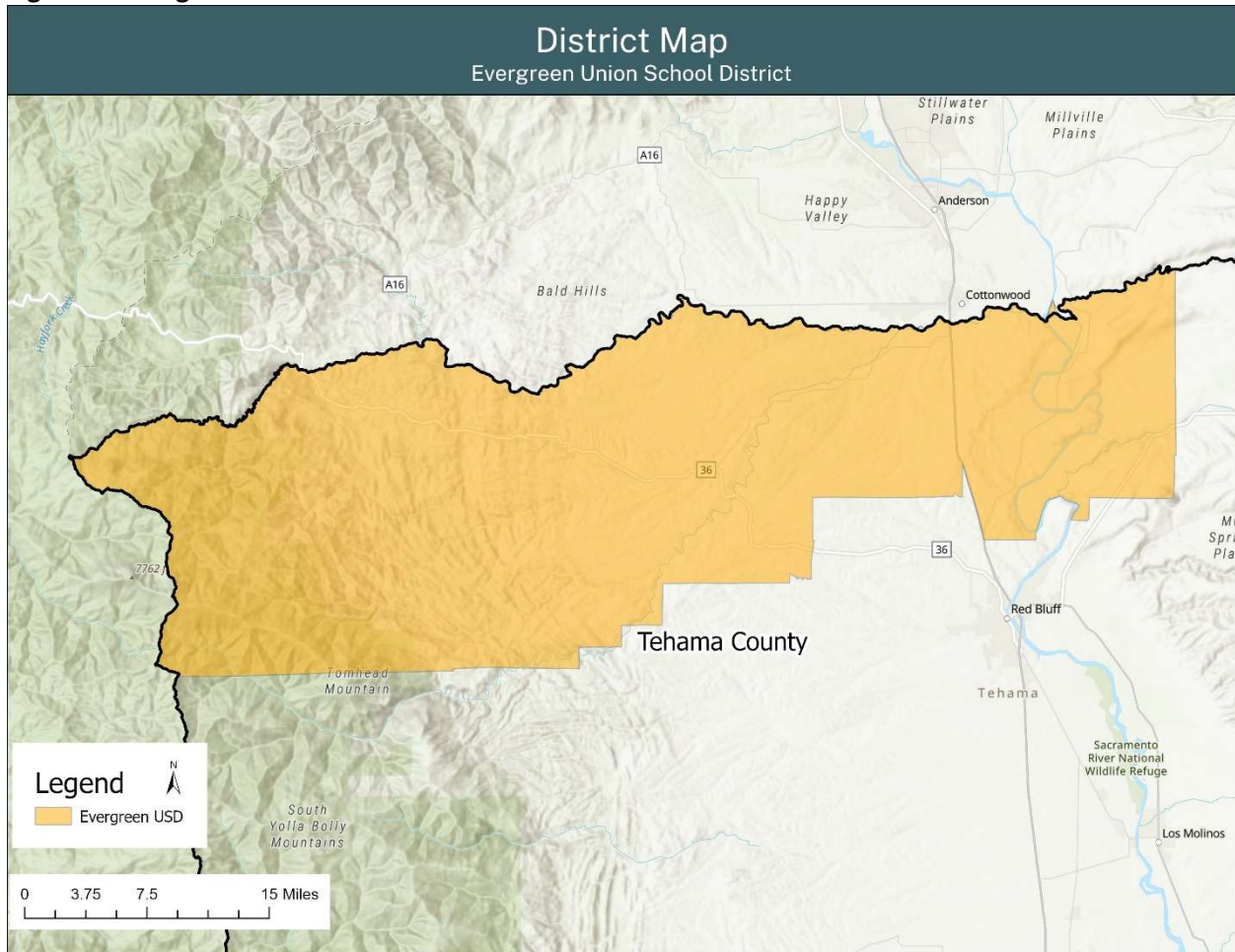
In summary, AB 181 establishes additional requirements which must be satisfied by school districts prior to their levying School Fees on CID.

DEVELOPER FEE JUSTIFICATION: RESIDENTIAL DEVELOPMENT

Evergreen Union School District

The Evergreen Union School District (EUSD) serves a portion of unincorporated Tehama County. The District serves TK-12th grade students at two elementary schools, one middle school, one community day school program, and one TK-12th grade charter school operating in a District-owned site. Figure 1 provides the location of the District boundary.

Figure 1. Evergreen Union School District Boundaries



Projected Residential Development

Residential development generates students for the District to house in facilities, new and/or renovated. Therefore, it is imperative to research residential development to project growth and associated student generation within the District. While Tehama County planning staff were unable to provide a specific estimate for units to be built within EUSD, they provided the County Housing Element to use in order to derive an estimate. According to data published in the current Tehama County Housing Element, 133 units may be constructed within the District over the next 20 years.

Student Generation Rates

The average number of students generated by each housing unit provides a student generation rate or “yield factor”. The number of students generated from new housing units within the District’s boundaries was assessed for the District by comparing the total number of housing units within the District provided by the 2024 American Community Survey (ACS) 5-Year Estimates to the 2025-26 EUSD student list to calculate the number of students within the District, for a student generation rate of 0.306. This student generation rate can then be applied to the projected housing units to assist in determining the new students entering the District. This calculation is shown in Table 1.

Table 1. Student Generation Rates and Students Generated

Total Housing Units ACS 2024	2025-26 Students	Student Generation Rate	Projected Units Within the District	Expected Students Generated
3,960	1,212	0.306	133	41

Projected School Facilities Needs

As new students are generated by development, the need to increase the useful life of school facilities becomes more apparent. Only with regular modernization/reconstruction can the District maintain facilities to their current quality to ensure they can still be effectively used to house all students over the next 20 years. Without the ongoing modernization/reconstruction of its existing facilities to maintain the existing level of service, students generated by future residential development would not receive the same level of service as current students experience. Furthermore, absent the students who will be generated by new development, some school facilities projects, such as the replacement of portables exceeding their useful lifespan, may not be necessary at all.

EUSD maintains a project list with estimated costs to track and plan for its ongoing capital facilities needs. The 2026 list identifies numerous modernization/reconstruction projects across the District’s school sites along with their costs. Specifically, EUSD is planning to replace aging portable classrooms that have exceeded their useful life with newer portable or modular buildings, as well as to modernize the ageing permanent classrooms that are more than 75 years old. These improvements are necessary to maintain the existing level of service over the next 20 years so that all students, including those generated by anticipated residential development, can continue to receive consistent access to adequate and modern school facilities.

The total cost of these projects is estimated at approximately \$25 million. The District has not recently passed a bond measure and currently does not have funding available to cover these costs, resulting in a funding shortfall, and the need to collect developer fees to provide school facilities to students who will be generated by new development that will maintain the existing level of service.

To calculate the reconstruction needs generated by students from new development, the District must analyze the number of new units to be constructed, the square footage of those units, and, utilizing the student generation rate, the number of students to be generated by those developments. Once this analysis is completed, the per pupil cost to house those students can be calculated based on the cost to modernize facilities. The average square footage is multiplied by the projected housing units which equals a total projected square footage. Tehama County was unable to provide an estimate of average square

footage; therefore, a sample of 209 residential units within the boundaries served by the District, sourced from a real estate database, were surveyed to determine an average square footage of 1,805. These calculations are shown in Table 2.

Table 2. Housing Units and Calculation of Square Footage

Total Projected Housing Units	Average Square Footage	Total Projected Square Footage
133	1,805	240,065

New Construction Cost vs. Modernization/Reconstruction

The cost per student to construct new school facilities within the Evergreen Union School District is \$125,715 as shown in Table 3. Construction costs were provided by Van Pelt Construction Services based on records of past and present new construction school projects in the Northern California region (Appendix A). The cost to modernize facilities is 38.4% of new construction costs. This percentage is based on the comparison of the per pupil grant for the State School Facility Program modernization program and the State per pupil new construction grant. When analyzing the cost to construct new facilities, the State provides \$16,411 per elementary school pupil and \$6,249 to modernize facilities. For middle school pupils, the State provides \$17,358 for new construction and \$6,608 for modernization/reconstruction. For high school pupils, the State provides \$22,086 for new construction and \$8,653 for modernization/reconstruction. The average of the modernization/reconstruction grants is 38.4% of the new construction grants. Appendix B details the School Facility Program per pupil grant amounts.

Table 3. Cost per Student for New Construction

Grade Level	New Construction Cost per Student
TK-4	\$108,895
5-8	\$131,870
9-12	\$144,790
Weighted Average $((\\$108,895*6)+(\\$131,870*4)+(\\$144,790*4))/14$	\$125,715

Since the new construction cost per student is \$125,715, the modernization/reconstruction cost per student for the Evergreen Union School District is 38.4% of this value, or \$48,275.

This modernization/reconstruction cost per student is multiplied by the total students generated from Table 1 to determine the District’s total modernization/reconstruction need (Table 4). Dividing the total modernization/reconstruction need by the total projected square footage in Table 2 provides the modernization/reconstruction facilities cost per square foot (Table 5).

Table 4. District Total Modernization/Reconstruction Need

Modernization/Reconstruction Cost per Student	Total Students Generated	Total Modernization/Reconstruction Need
\$48,275	41	\$1,979,275

Table 5. District Modernization/Reconstruction Facilities Cost per Square Foot

Total Modernization/Reconstruction Need	Total Projected Square Footage	Facilities Cost per Square Foot
\$1,979,275	240,065	\$8.24

As established above, the District is justified in collecting residential developer fees at a rate of \$8.24, which exceeds the current statutory Level I fee of \$5.38. Therefore, the District is justified to collect its 60% share of the full amount of the statutory fee per square foot of new residential construction, which is currently \$3.23.

DEVELOPER FEE JUSTIFICATION: COMMERCIAL/INDUSTRIAL PROJECTS

California Assembly Bill 181 provides that a district “must determine the impact of the increased number of employees anticipated to result from commercial/industrial development upon the cost of providing school facilities within the district. For the purposes of making this determination, the study shall utilize employee generation estimates that are based on commercial and industrial factors within the district, as calculated on either an individual project or categorical basis”. However, Assembly Bill 530 modified the requirements of AB 181 by allowing the use of a set of statewide employee generation factors. These factors are identified in the San Diego Association of Governments report, “San Diego Traffic Generators”. This study has become the standard in the industry for the calculation of the commercial/industrial fees.

Senior Housing

Certain types of housing dedicated for occupancy by senior citizens may not be subject to the full residential fee because it would not house student age residents. Pursuant to state law, it would generally be subject to the maximum fee for commercial development projects, based on its indirect contribution to student generation. Individual projects applying for such special treatment should be evaluated by the District on a case-by-case basis to ensure that the units will be permanently dedicated for use by seniors.

Commercial/Industrial Development Fee Calculations

The construction of commercial/industrial buildings within a community generates new employees and, therefore, new residents for a school district. The link between creating new jobs and student enrollment has been acknowledged by the State Allocation Board and in statute. The Legislature has also determined that if there is more impact than can be mitigated by residential fees, and some of this impact is caused by commercial/industrial development, then commercial/industrial development can also be charged fees. As shown above, the District is justified to collect a higher residential fee than the current statutory level.

To determine the impact of commercial/industrial development, several factors must be analyzed to calculate the modernization/reconstruction cost per square foot of this development. Assembly Bill 530 allows for the use of state-wide employee generation factors, specifically those derived from a report entitled San Diego Traffic Generators published by the San Diego Association of Governments in 1990. This report demonstrates the number of employees generated per square foot of commercial/industrial development, by category. Table 6 displays these categories and the number of employees generated for each square foot of space. An average employees/square foot value is then determined for EUSD based on these categories.

Table 6. Commercial/Industrial Employee Generation Factors

Development Category	Employees/Square Foot
Agriculture	0.00031
Banks	0.00282
Commercial Offices	0.00478
Community Shopping Centers	0.00109
Corporate Offices	0.00268
Industrial Parks	0.00168
Industrial/Business Parks	0.00221
Lodging	0.00155
Medical Offices	0.00427
Neighborhood Shopping Centers	0.00362
Scientific R&D	0.00304
Average	0.00255

Additional data is used to determine the base school facility impact incurred to the District by commercial/industrial development. As shown in Table 7, the calculations also consider the percent of employees in the District who also live in the District (characterized by the percentage with a commute under 10 minutes), the number of households per employee, the students generated per household, and the modernization/reconstruction cost for each student. Data for percent of employees living in the District and households per employee are sourced from The United States Census Bureau’s 2024 American Community Survey 5-Year Estimates. The number of students generated per household was previously shown in Table 1, while the modernization/reconstruction cost per student was shown in Table 4.

Table 7. Commercial/Industrial Base Cost per Square Foot (Except Mini-Storage)

Employees/ Square Foot	% Employees Living in District	Households per Employee	TK-12 Students per Household	Modernization/ Reconstruction Cost per Student	Commercial/Industrial Cost per Square Foot
0.00255	5.8%	0.891	0.306	\$48,275	\$1.95

It is important to note the mini-storage category of commercial development as an exception to the rates in Table 6. This type of development has a much lower impact than all other categories of commercial/industrial development, with only 0.00006 employees generated per square foot. Table 8 demonstrates the base cost per square foot for mini-storage development only.

Table 8. Mini-Storage Base Cost per Square Foot

Employees/ Square Foot	% Employees Living in District	Households per Employee	TK-12 Students per Household	Modernization/ Reconstruction Cost per Student	Commercial/Industrial Cost per Square Foot
0.00006	5.8%	0.891	0.306	\$48,275	\$0.05

Having calculated the base costs per square foot for commercial/industrial development, a residential fee offset must be applied to account for the residential fee revenues the District will collect from homes associated with the employees generated by new commercial/industrial development. It is important to note that while this offset assumes all homes associated with new employees are new homes, in reality some of the new employees will live in existing homes. For the purpose of calculating the residential fee offset, it is estimated the District will collect 60% the full statutory residential fee of \$5.38 per square foot, which is \$3.23 per square foot. The weighted average square footage for a new home in the District was previously shown in Table 2. Table 9 shows the calculations for the residential fee offset for all commercial/industrial development except mini-storage, while Table 10 shows the calculation for mini-storage development.

Table 9. Commercial/Industrial Residential Fee Offset (Except Mini-Storage)

Employees/Square Foot	% Employees Living in District	Households per Employee	Average Square Feet/ Household	Revenue per sq. ft. from Residential Fee	Residential Offset
0.00255	5.8%	0.891	1,805	\$3.23	\$0.77

Table 10. Mini-Storage Residential Fee Offset

Employees/Square Foot	% Employees Living in District	Households per Employee	Average Square Feet/ Household	Revenue per sq. ft. from Residential Fee	Residential Offset
0.00006	5.8%	0.891	1,805	\$3.23	\$0.02

By subtracting the residential fee offset from the base commercial/industrial costs per square foot, the final school facility cost, which takes into account linked residential revenue, is determined. Table 11 shows the final commercial/industrial costs per square foot.

Table 11. Commercial/Industrial Final Costs per Square Foot

Development Type	Base Cost per Square Foot	Residential Offset	Final Cost per Square Foot
Mini-Storage	\$0.05	\$0.02	\$0.03
All Other Commercial/Industrial	\$1.95	\$0.77	\$1.18

As established above, the District is justified in collecting commercial/developer fees at a rate of \$1.18, which exceeds the current statutory Level I fee of \$0.87, with the exception of mini-storage development, which is justified at a lower amount. Therefore, the District is justified to collect its 60% share of the full amount of the statutory \$0.87 fee per square foot of new commercial/industrial construction, except for mini-storage, which should be collected at \$0.03 per square foot.

SUMMARY AND FINDINGS

This study finds that the Evergreen Union School District is justified in the collection of the statutory developer fees per square foot of both residential and commercial/industrial construction. The District should move forward with adopting the new fees. This requires the District to follow the appropriate notices for a public hearing and meeting all noticing requirements.

This justification is based on the following conclusions of the study:

- There remains a need to modernize its school facilities to continue housing new students who are generated from new development at the existing level of service;
 - Modernization/reconstruction costs are 38.4% of new construction costs;
- Residential development will generate 0.306 TK-12th grade students per unit for the District to house;
 - The District's modernization/reconstruction cost for students generated from residential development is \$8.24 per square foot;
- Commercial/Industrial calculations also indicate a cost to house pupils that would be generated from local housing as a result of residents moving into the District;
 - This modernization/reconstruction cost for students generated from commercial/industrial development is \$1.18 per square foot, except for mini-storage development which is \$0.03 per square foot;
- The District meets the criteria to impose the statutory developer fee.

Due to these factors, the District should proceed with adopting its 60% share of the statutory Level I Developer Fees, currently \$3.23 (60% of \$5.38) per square foot for residential construction and \$0.52 (60% of \$0.87) per square foot for commercial/industrial construction, except for mini-storage which is charged at \$0.03 per square foot.

ADMINISTRATION OF THE FEES

Administrative Requirements

The District must maintain a special account for the developer fees collected and any interest which accrues from the fees collected.

Reporting Requirements

Government Code sections 66006 and 66001 require, annually within 180 days of the end of each fiscal year, that the District make available to the public certain information and adopt prescribed findings relative to Developer Fees adopted pursuant to Education Code section 17620 and Government Code section 65995.

For the fifth fiscal year following the first deposit into the fund, and every five years thereafter, the District is required to make additional findings with respect to that portion of the fund remaining unexpended, whether committed or uncommitted.

This accounting will identify a description of the fee and its amount as well as a beginning and ending fund balance. Also, in the report will be the portion of the collected funds that have been expended, those remaining funds, and the purpose to which those have been and will be put to use. The report must also identify the approximate date upon which a school district anticipates receiving adequate revenue to complete any improvements required as a result of students generated from residential or commercial construction projects.

Government Code Section 66001 (a) (1): Purpose of Fees

The purpose of the fee is school facility construction and/or reconstruction to help the District continue to provide school facilities to all pupils, current and new, over the next 20 years by continuing to reconstruct or modernize the existing facilities to maintain the existing level of service for all students.

Government Code Section 66001 (a) (2): Use of Fees

The District's use of the fee will involve construction and/or reconstruction of school facilities and/or additional permanent facilities on existing school campuses, including but not limited to the types of projects included in this Study and the District's Facility Master Plan. In addition, the District may need to purchase or lease portable classrooms to use for interim housing while permanent facilities are being constructed. Revenue from fees collected on residential and commercial/industrial development may be used to pay for any of the following:

1. Design of School Facilities;
2. Purchase of land for School Facilities;
3. Construction or reconstruction of school facilities including both classroom and instructional spaces, and ancillary supporting facilities;
4. Testing and inspection of school sites and school buildings and permit and plan check fees;
5. Interim school facilities to house students generated by new development while permanent facilities are being constructed;
6. Legal and administrative costs associated with providing facilities to students generated by new development;
7. Administration of the collection of developer fees;

8. Miscellaneous purposes resulting from student enrollment growth caused by new residential development; and
9. Any other use permitted by law.

Government Code Section 66001 (a) (3): Reasonable Relationship between the Fee's Use and the Type of Development Project on which the Fee is Imposed

Future residential development will cause new families to move into the District and, consequently, generate additional students in the District. In order to continue providing facilities at the existing level of service for future students, the District will need to modernize and/or reconstruct facilities. The fee's use is therefore reasonably related to the type of project upon which it is imposed.

In addition, new commercial/industrial development will cause new workers to move into the District. Because these workers will have school-age children, the District will need to provide facilities for these students. The fee's use is reasonably related to the type of project upon which it is imposed.

Fees on Residential Reconstruction

Residential Reconstruction consists of voluntarily demolishing existing residential units and replacing them with new residential development. To the extent reconstruction increases the residential square footage beyond what was demolished, the increase in square footage is subject to the applicable developer fees as such construction is considered new residential development. As for the amount of square footage constructed that replaces only the previously constructed square footage the determination of the applicable fee, if any, is subject to a showing that the replacement square footage results in an increase in student enrollment and, therefore, an additional impact being placed on the School District to provide facilities for new student enrollment. Prior to the imposition of fees on Replacement Square Footage, the School District shall undertake an analysis on any future proposed projects(s) to examine the extent to which an increase in enrollment can be expected from Replacement Square Footage due to any differential in SGRs as identified in the Study for the applicable unit types between existing square footage and Replacement Square Footage. Any such fee that is calculated for the Replacement Square Footage shall not exceed the School Fee that is in effect at such time.

Reconstruction of Commercial/Industrial Square Footage

The voluntary demolition of existing commercial/industrial buildings and replacement with new residential development is a different category of Reconstruction. The School District will evaluate the impacts of Commercial/Industrial Reconstruction projects on a case-by-case basis and will make a determination of whether a fee credit is justified based on the nature of the project.

Government Code Section 66001 (a) (4): Reasonable Relationship Between the Need for the Public Facility and the Type of Project Upon Which the Fee is Imposed

As demonstrated in this Study, current District school facilities require renovation/reconstruction to continue providing the existing level of service for the next 20 years. Existing residents and residents from new development, both residential and commercial/industrial, should share in these costs. Therefore, the need for adequate school facilities is directly related to the new residential and commercial/industrial development projects upon which the fee is imposed.

Government Code Section 66001 (b): Reasonable Relationship Between the Amount of the Fee and the Cost of the Public Facility

The State School Facility Program provides a reference for the relative cost of modernization/reconstruction projects to new construction. This report demonstrates the cost per student for new construction projects, and by using the School Facility Program grant amounts for reference, the cost per student for modernization/reconstruction projects that will need to be undertaken to ensure the District can continue to provide school facilities at the existing level of service for all future students. This report also demonstrates that the cost impact to the District per square foot of development, whether residential or commercial/industrial, is greater than the statutory developer fees to be collected.

REVENUE SOURCES/FUNDING FACILITIES

The District may also utilize other sources of funding for modernizing and/or reconstructing school facilities. These funding sources include:

State School Facility Program

Senate Bill 50 reformed the State School Building Lease-Purchase Program in August, 1998. The new program, entitled the School Facility Program, provides funding under a “grant” program once a school district establishes eligibility. Funding required from districts is a 50/50 match for new construction projects and a 60/40 match for modernization/reconstruction projects. While there is generally a shortfall between State funding and the District’s actual facility needs, the State monies aid in assisting the District in its facility needs.

General Obligation Bonds

School districts can, with the approval of 2/3 or 55% of voters, issue General Obligation Bonds which are paid out of property taxes.

The District has not recently passed any bonds.

Parcel Taxes

Approval by 2/3 of the voters is required to impose taxes that are not based on the assessed value of individual parcels. The revenues from these taxes are usually minor. Parcel taxes are typically not used for capital outlay. Instead, revenue from such programs is generally used to fund curriculum, instructional enhancements, and other non-facility related expenditures.

Mello-Roos Community Facilities Districts

This alternative uses a tax on property owners within a defined area to pay long-term bonds issued for specific public improvements. Mello-Roos taxes require approval from 2/3 of the voters in an election.

RECOMMENDATIONS

This report recommends that the Evergreen Union School District levy its 60% share of the maximum statutory fee authorized by Government Code Section 65995 on new residential development, currently \$3.23 (60% of \$5.38) per square foot. This report also recommends that the Evergreen Union School District levy its 60% share of the maximum statutory fee authorized by Government Code Section 65995 currently \$0.52 (60% of \$0.87) per square foot on all categories of commercial/industrial development (except mini-storage).

These recommendations are based on the findings that residential and commercial/industrial development create a school facility cost for the Evergreen Union School District.

SOURCES

California Basic Educational Data System. California State Department of Education. October Enrollments, 2025-26.

California State Department of Education. California Public School Directory.

California State Department of Finance. Population Research Division.

Freitas, Sonia. Chief Business Officer. Evergreen Union School District.

Leroy F. Greene School Facilities Act, 1998.

Mendenhall, Brad. Superintendent. Evergreen Union School District.

RealQuest Online Database.

Redeker, Greg. Planner IV. Tehama County.

San Diego Association of Governments. Traffic Generators, January 1990.

United States Census Bureau, 2024 American Community Survey.

APPENDIX A
CONSTRUCTION COSTS

October 10, 2025

RE: Estimated Construction Costs
Subject: Per-Student Costs at Evergreen Union School District

To Whom It May Concern,

We have reviewed our records of past and present projects that involve recent new school construction within the region. Using a formula based on escalation from projects in previous years, our estimate for the Evergreen Union School District is as follows:

NORTHERN CALIFORNIA REGION

Estimated Construction Costs (Escalated 17% from December 2023 baseline)

School Type	Capacity	Construction Cost per Student	Total Construction Cost
Elementary School	500	\$108,895	\$54,447,500
Middle School	700	\$131,870	\$92,309,000
High School	1,000	\$144,790	\$144,790,000

These costs assume a reasonably flat site with access to utilities consistent with an urban or residential area. Costs exclude site acquisition. These figures are intended for use in establishing developer fee justifications and estimating State eligibility; they are not intended as project-specific budgets.

Thank you,



Kelli Jurgenson
Vice President
VPCS

APPENDIX B
PER PUPIL GRANT AMOUNTS

ATTACHMENT B

ANNUAL ADJUSTMENT TO SCHOOL FACILITY PROGRAM GRANTS

State Allocation Board Meeting, January 28, 2026

Grant Amount Adjustments

New Construction	SFP Regulation Section	Adjusted Grant Per Pupil Effective 1-1-25	Adjusted Grant Per Pupil Effective 1-1-26
Elementary	1859.71	\$15,847	\$16,411
Middle	1859.71	\$16,761	\$17,358
High	1859.71	\$21,327	\$22,086
Special Day Class – Severe	1859.71.1	\$44,531	\$46,116
Special Day Class – Non-Severe	1859.71.1	\$29,782	\$30,842
Automatic Fire Detection/Alarm System – Elementary	1859.71.2	\$19	\$20
Automatic Fire Detection/Alarm System – Middle	1859.71.2	\$25	\$26
Automatic Fire Detection/Alarm System – High	1859.71.2	\$42	\$43
Automatic Fire Detection/Alarm System – Special Day Class – Severe	1859.71.2	\$79	\$82
Automatic Fire Detection/Alarm System – Special Day Class – Non-Severe	1859.71.2	\$56	\$58
Automatic Sprinkler System – Elementary	1859.71.2	\$265	\$274
Automatic Sprinkler System – Middle	1859.71.2	\$317	\$328
Automatic Sprinkler System – High	1859.71.2	\$329	\$341
Automatic Sprinkler System – Special Day Class – Severe	1859.71.2	\$839	\$869
Automatic Sprinkler System – Special Day Class – Non-Severe	1859.71.2	\$562	\$582

ATTACHMENT B

ANNUAL ADJUSTMENT TO SCHOOL FACILITY PROGRAM GRANTS

State Allocation Board Meeting, January 28, 2026

Grant Amount Adjustments

Modernization	SFP Regulation Section	Adjusted Grant Per Pupil Effective 1-1-25	Adjusted Grant Per Pupil Effective 1-1-26
Elementary	1859.78	\$6,034	\$6,249
Middle	1859.78	\$6,381	\$6,608
High	1859.78	\$8,356	\$8,653
Special Day Class - Severe	1859.78.3	\$19,232	\$19,917
Special Day Class – Non-Severe	1859.78.3	\$12,867	\$13,325
State Special School – Severe	1859.78.3	\$32,056	\$33,197
Automatic Fire Detection/Alarm System – Elementary	1859.78.4	\$196	\$203
Automatic Fire Detection/Alarm System – Middle	1859.78.4	\$196	\$203
Automatic Fire Detection/Alarm System – High	1859.78.4	\$196	\$203
Automatic Fire Detection/Alarm System – Special Day Class – Severe	1859.78.4	\$540	\$559
Automatic Fire Detection/Alarm System – Special Day Class – Non-Severe	1859.78.4	\$362	\$375
Over 50 Years Old – Elementary	1859.78.6	\$8,383	\$8,681
Over 50 Years Old – Middle	1859.78.6	\$8,866	\$9,182
Over 50 Years Old – High	1859.78.6	\$11,606	\$12,019
Over 50 Years Old – Special Day Class – Severe	1859.78.6	\$26,720	\$27,671
Over 50 Years Old – Special Day Class – Non-Severe	1859.78.6	\$17,866	\$18,502
Over 50 Years Old – State Special Day School – Severe	1859.78.3	\$44,530	\$46,115