

Ashley Falls Elementary School Modernization

09.08.2025 | COMMUNITY MEETING: SESSION THREE

Welcome Del Mar Families



Founded with the purpose of anticipating community needs, HMC aims to create designs that have a positive impact, now and into the future.

We focus primarily on opportunities to have the most direct contribution to communities — through education, healthcare, and civic spaces.

Agenda

DISTRICT WELCOME AND INTRODUCTIONS

Facilities Master Plan

PROCESS OVERVIEW AND RECAP

Community Meeting Timeline

Project Timeline

Session 1+2 Recap

PROPOSED UPGRADES

Infrastructure Upgrades

Finish Upgrades

Outdoor Gathering

ACTIVITY WORKSHOP

FINAL THOUGHTS

Destination 2028! and the DMUSD Facilities Master Plan

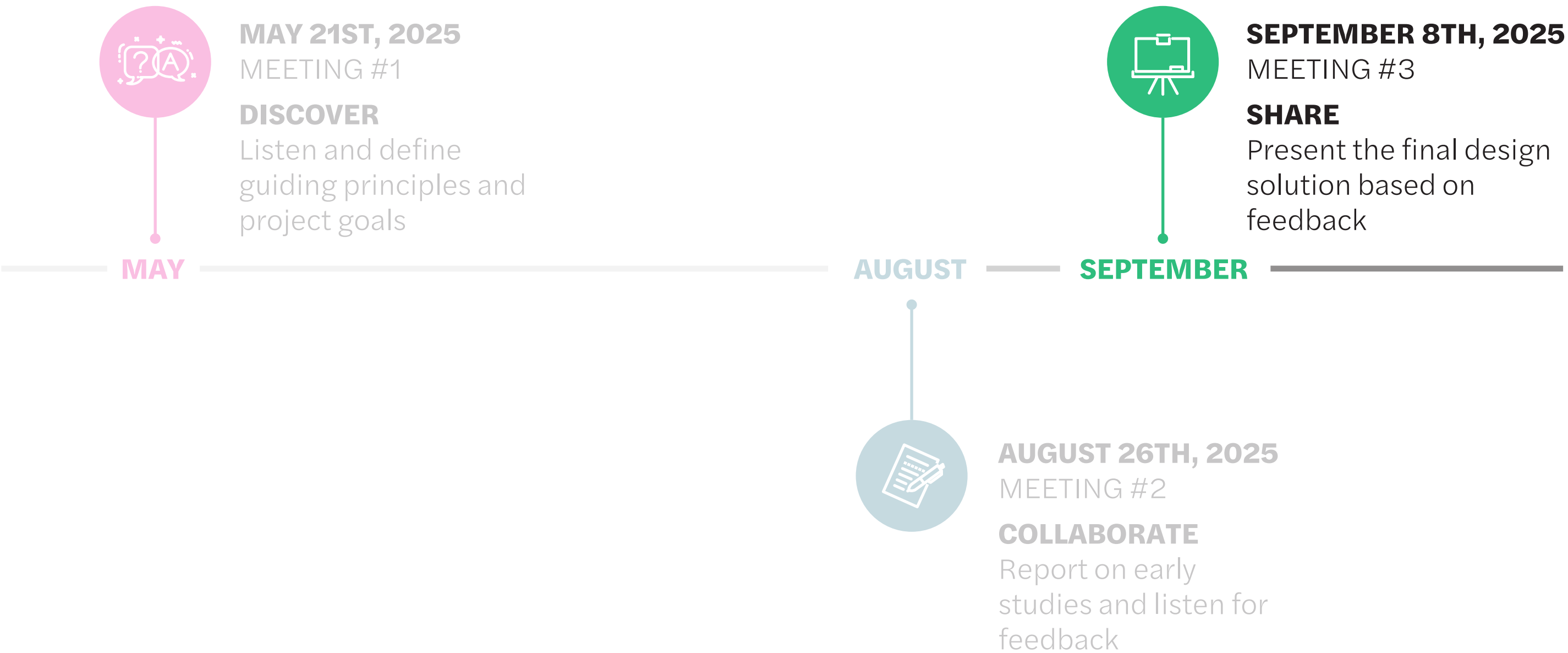
Destination 2028! documents **four** levers to identify the method by which to achieve the District's vision and mission:

- Lever One: Learning Experience
- Lever Two: Responsive and Caring Culture
- Lever Three: Stewardship of Resources
- Lever Four: Design Influence



Where We Are

COMMUNITY ENGAGEMENT TIMELINE



Session 1 “Discover” Recap



environmentally friendly campus

improve lighting quality

integration of nature in learning experiences

better classroom acoustics

plants, trees, calming environment

excessive blacktop

interaction across language programs

too much hardscape

stronger campus identity and pride



Session 2 “Collaborate” Recap

Which color concept most resonates with you?

5



#1: Mission

1



#2: Coastal

2



#3: Canyon Trails

Session 2 “Collaborate” Recap

Ashley Falls - Activity Workshop

- Where is shade most desired?
- Where is landscaping

Note: Keep all stickers inside of property line



Session 2 “Collaborate” Recap



INFRASTRUCTURE

Replace aging HVAC equipment and roofs, and explore lighting and equipment upgrades to keep the campus’s core systems reliable for years to come..



CAMPUS IDENTITY

Enhance the campus’s aesthetic with a modern, bright feel while keeping colors neutral and true to its Spanish-style architecture



FINISH UPGRADES

Continue the modernization of remaining spaces with new finishes, including fresh paint throughout to create a cohesive campus environment.








OUTDOOR GATHERING

Design outdoor environments that are flexible and functional, with shade, seating, and integrated technology to make the space truly usable.

Existing Campus Site Plan



EXISTING PROGRAM USES

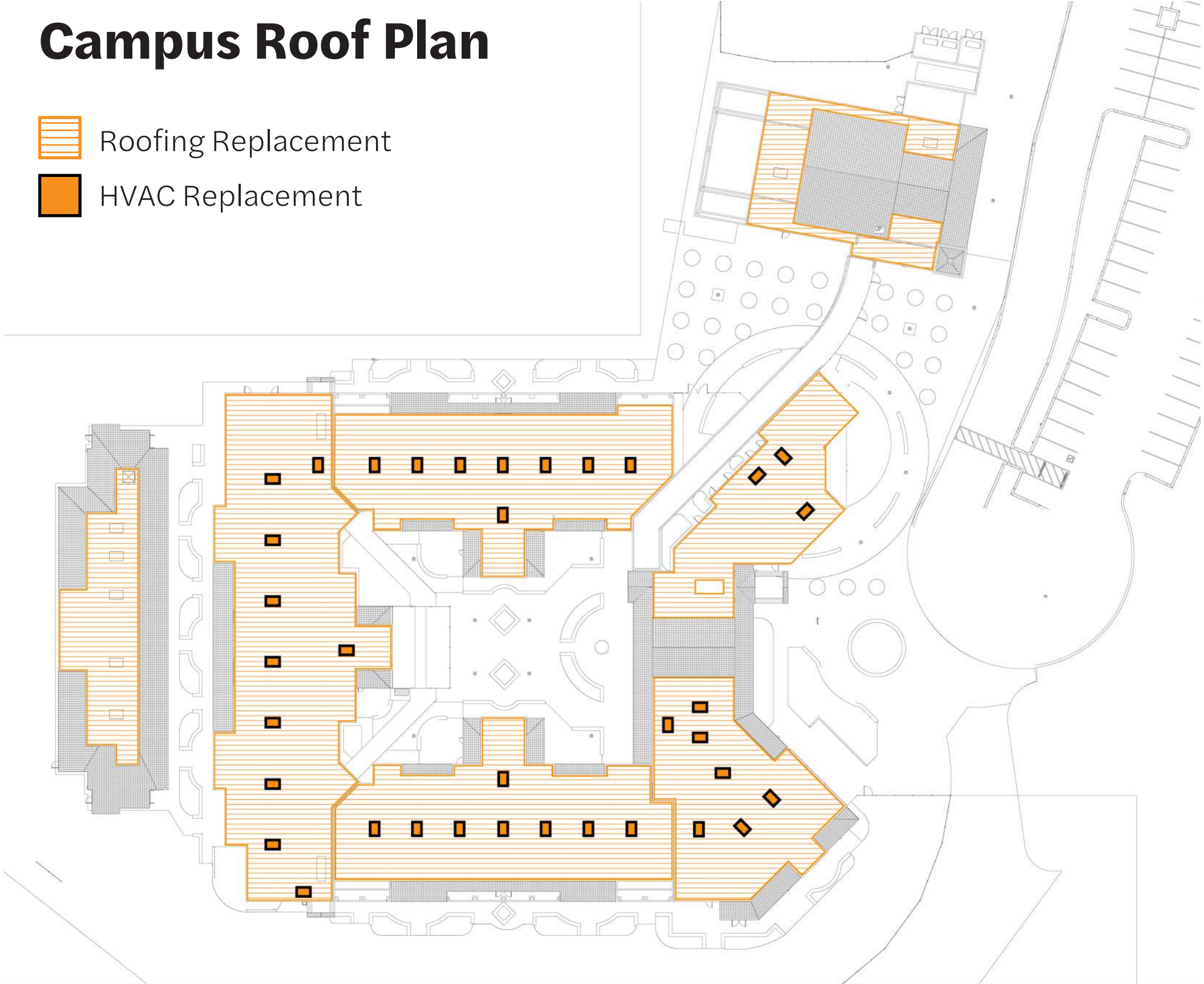
-  Learning Studio
-  Assembly
-  Admin
-  Restrooms
-  Storage/Utility
-  Existing Fence
-  Existing Fire Lane
-  Existing Property Line





Campus Roof Plan

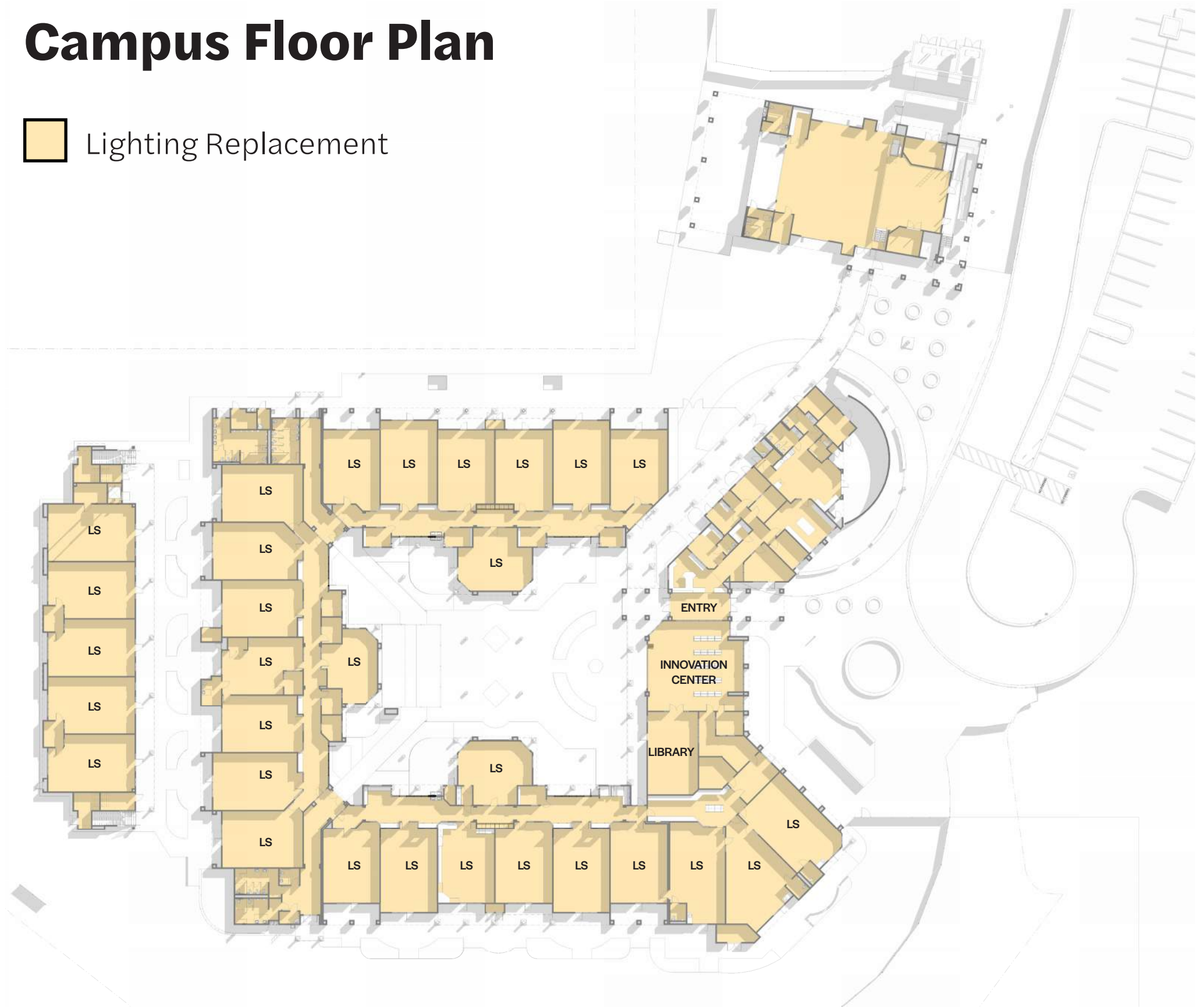
-  Roofing Replacement
-  HVAC Replacement









Campus Floor Plan

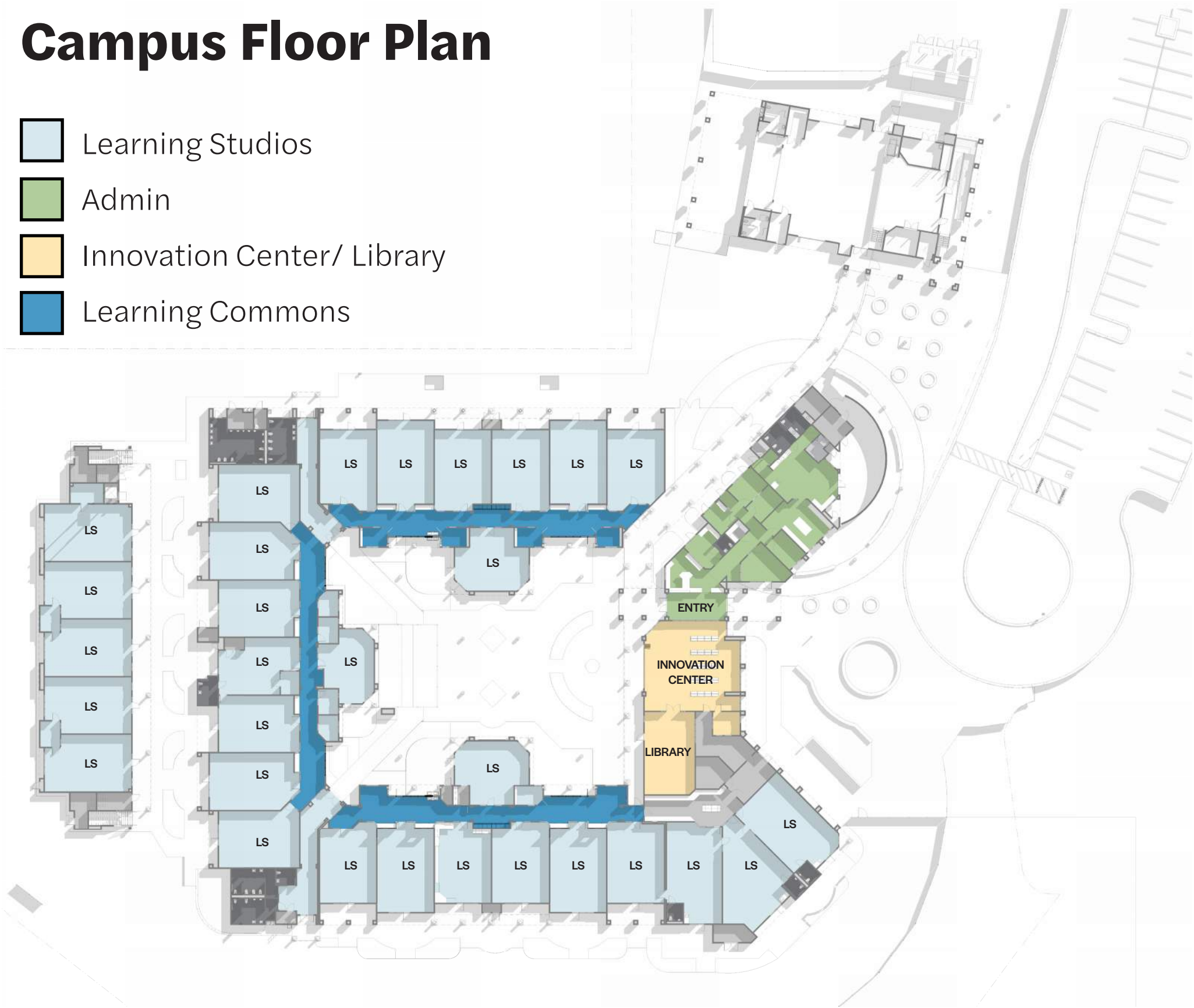
 Lighting Replacement

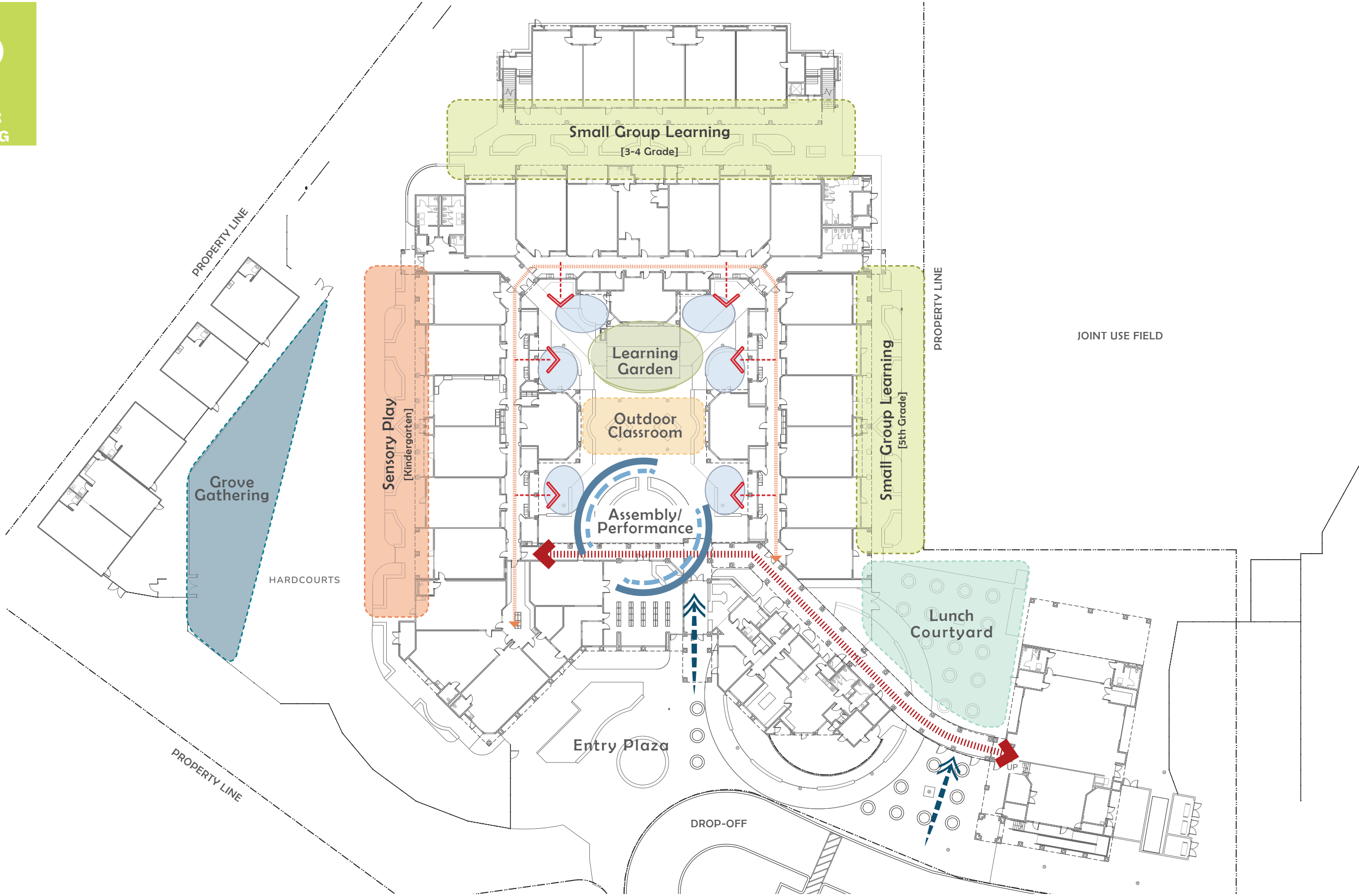




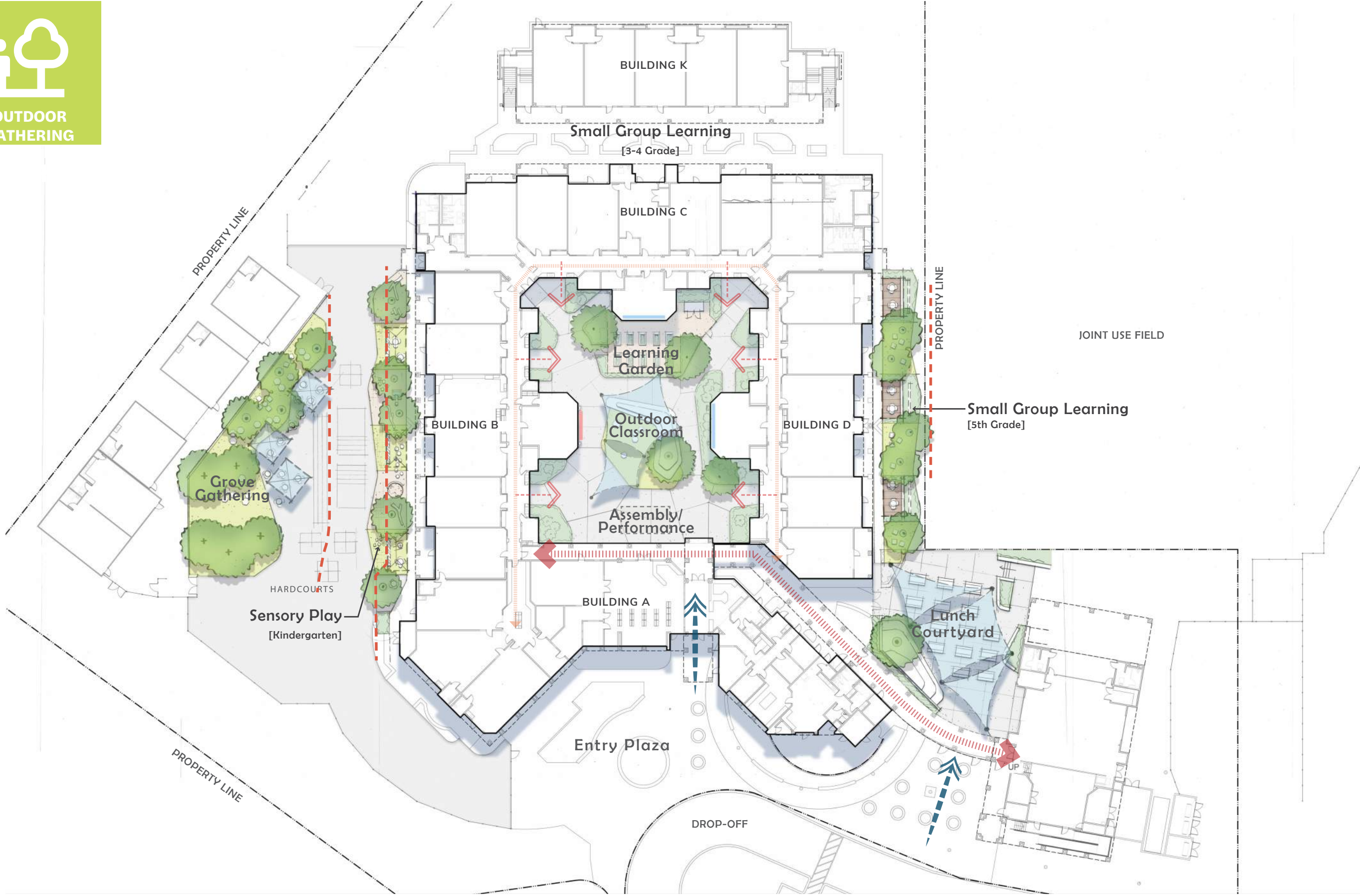
Campus Floor Plan

-  Learning Studios
-  Admin
-  Innovation Center/ Library
-  Learning Commons





Schematic Site Plan



Proposed Site Plan

Activity Workshop #1 - Central Courtyard

1. Pin on Image

- Place dots on images that resonate with you.



Activity Workshop #1 - Lower Grade Outdoor Area

1. Pin on Image

- Place dots on images that resonate with you.



Activity Workshop #1 - Upper Grade Outdoor Areas

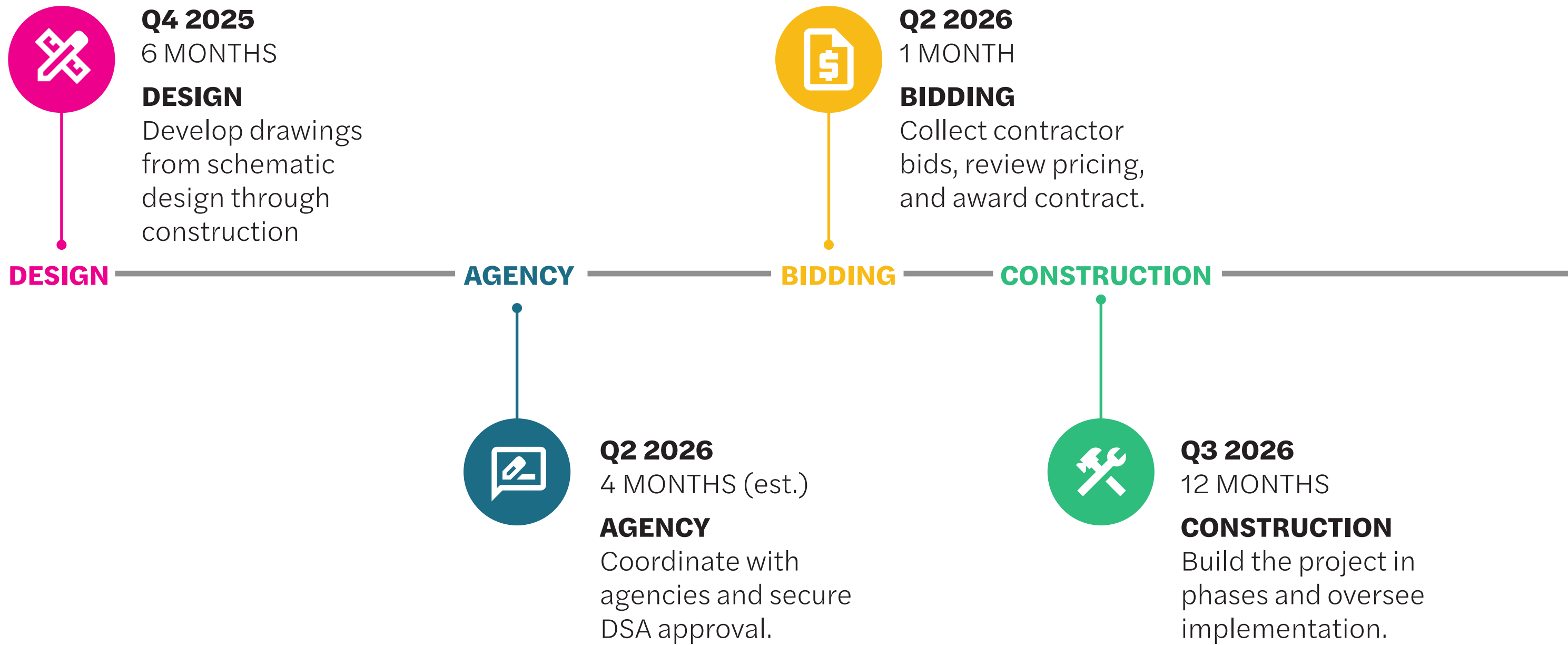
1. Pin on Image

- Place dots on images that resonate with you.



Next Steps

PROJECT TIMELINE



Thank You!