



# OLIVEHURST ELEMENTARY MONTHLY NEWSLETTER



## PRINCIPAL'S MESSAGE

Hello Eagle Families,  
Happy New Year! We're excited to kick off 2026 with many great things coming up!

PTA is hosting our annual Family Dance in February, see the flyer below for more details. This year we've decided on a western theme so dust off your boots, we hope to see you there!

*Note about Winter Weather: As the weather remains cold, students come to school with jackets, sweaters, and mittens etc. We will place all lost and found items on the fence at dismissal time on Fridays. Please check there for lost and found items!*

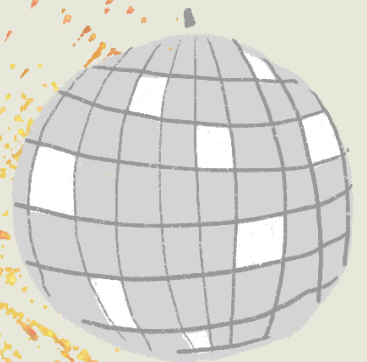
Sincerely,  
Heather Marshall  
Principal



Please click here to join our  
school's facebook page.  
[Olivehurst Elementary  
Facebook page](#)

## MARK YOUR CALENDAR

- 1/14: MINIMUM DAY
- 1/15: FOOD BANK DISTRIBUTION
- 1/19: NO SCHOOL, MARTIN LUTHER KING JR DAY
- 1/28: MINIMUM DAY
- 1/27: 100<sup>TH</sup> DAY OF SCHOOL
- 1/30: ELAC MEETING, 8:30 A.M.



**HAPPY  
NEW YEAR**





OLIVEHURST ELEMENTARY



# WESTERN THEMED FAMILY DANCE

HOSTED BY: OLIVEHURST EAGLES PTA

**FEBRUARY, 28 2026**

TIME: 6 00 P.M. - 8 30 P.M.

LOCATION: YUBA GARDENS  
1964 11TH AVENUE, OLIVEHURST

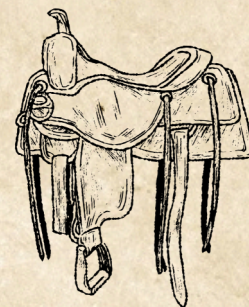
## ★ PRICES ★

\$5 PER PERSON OR  
\$25 FOR A FAMILY OF 5 OR MORE

## INFO

FOOD AND DRINKS WILL BE  
AVAILABLE FOR PURCHASE



ALL STUDENTS MUST BE  
ACCOMPANIED BY A PARENT OR  
GUARDIAN



**PRE-ORDER  
TICKETS  
NOW**







# Olivehurst Elementary School Yuba Sutter Food Distribution

**Date:** January 15, 2026



**Time:** 1:15 P.M. till done

**Pick up Location:**

Olivehurst Elementary

1778 McGowan Pkwy

(smaller parking lot of the preschool)



**Olivehurst Staff will be  
distributing Yuba Sutter Food  
bags in the smaller parking lot  
of the preschool. FIRST COME  
FIRST SERVE until supplies last.**



**Please walk up to Sign In**





# Kindness Week

January 26th-30th

MONDAY 01/26	TUESDAY 01/27	WEDNESDAY 01/28	THURSDAY 01/29	FRIDAY 01/30
<p>KINDNESS Is always the right answer!</p>  <p>Dress as a <b>teacher!</b></p> <p><b><u>Kindness Challenge</u></b></p> <p>Thank-you Day! Write or say thank you to a teacher!</p>	<p>KINDNESS has no age!</p>  <p>Dress up as a <b>100</b> year old!</p> <p><b><u>Kindness Challenge</u></b></p> <p>Smile Day! Smile at 5 people that you do not know!</p>	<p>KINDNESS is the eagle way!</p>  <p>Wear <b>school attire</b> or school colors!</p> <p><b><u>Kindness Challenge</u></b></p> <p>Words Matter</p> <p>Wednesday! Tell a fellow Eagle something KIND!</p>	<p>KINDNESS is on the inside!</p>  <p>Wear your clothes <b>Inside Out!</b></p> <p><b><u>Kindness Challenge</u></b></p> <p>Help a classmate without being asked!</p>	<p>Double your KINDNESS!</p>  <p><b>Twin Day:</b> Pick a friend to match</p> <p><b><u>Kindness Challenge</u></b></p> <p>Compliment Friday! Compliment 2 people!</p>

Kindness  
Matters



@BZPYUBASUTTER



BLUE ZONES PROJECT



FREE

GROCERIES  
TASTE  
BETTER



**USE CODE: BZPYS**

**SCAN QR OR CLICK [HERE](#)**

Take the RealAge Test → be entered to win \$100+ in free groceries to local Blue Zones approved grocery stores! The RealAge Test helps measure our community's health progress and brings us one step closer to Blue Zones certification.

**[HTTPS://ASSESSMENTS.BLUEZONES.COM/REGISTRATION](https://assessments.bluezones.com/registration)**

# OLIVEHURST PTA

# MONTHLY EVENTS

2025-2026

## Aug/Sept

**August 13** 1st Day of School  
**August 14** PTA Board Meeting  
**August 28** PTA Meeting & Back to School Night  
**September 1** No School  
**September 11** PTA Board Meeting  
**September 12** TK-3rd Grade Donuts with Grown-Ups

## October

**October 7** Picture Day  
**October 9** PTA Board Meeting  
**October 11** Ooky Spooky  
**October 27-30** Red Ribbon week  
**October 31** No School

## November

**November 10-11** No School  
**November 13** PTA Board Meeting  
**November 18-21** Parent/Teacher Conferences  
**November 20** PTA Meeting, Makeup Picture Day  
**November 24-28** No School

## December

**December 5** Movie Night  
**December 11** PTA Board Meeting  
**December 22-31** No School

## January

**January 1-2** No School  
**January 8** PTA Board Meeting  
**January 19** No School  
**January 27** 100th Day of School

## February

**February 12** PTA Board Meeting  
**February 16-20** No School  
**February 28** Family Dance

## March

**March 3** Spring Picture Day  
**March 12** PTA Board Meeting  
**March 19** PTA Meeting  
**March 27** No School

## April/May

**April 3-10** No School  
**April 16** PTA Board Meeting  
**May 4-8** Staff Appreciation Week  
**May 6** Book Fair, Open House, PTA meeting  
**May 11** CAASP Testing Week  
**May 14** PTA Board Meeting  
**May 22** Morning in the Garden  
**May 25** No School  
**May 29** Field Day

## June

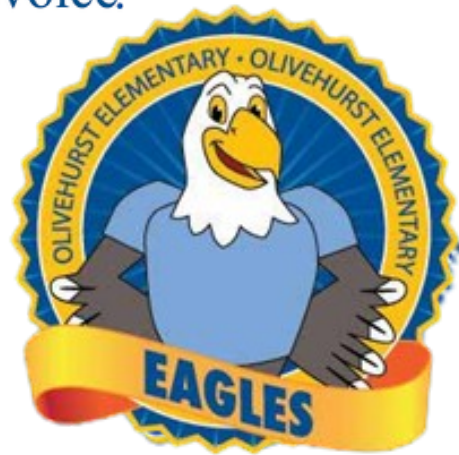
**June 4** TK Celebration, Kinder, & 6th Graduation  
**June 5** Last Day of School

These dates are subject to change.  
For the most up-to-date information,  
please check ParentSquare.





# *Support your child and your school -* **Support PTA!**



## **With your PTA membership:**

- **You show** your children that school matters, and that you are invested in their success.
  - **You demonstrate** to your child that success in school is the pathway to college, a career and a productive life!
  - **You partner** with the principal, teachers and staff to make your child's school safe, welcoming, a hub of learning, and a fun place to be.
  - **You share** in campus events and experiences that make your child's school days more memorable!
  - **You connect** with other parents, and become part California State PTA and National PTA, the largest and most powerful children's advocacy organization in the country.
  - **You help** make sure parents and family members voices are heard when important decisions that affect your school are made.



## **Here's how to join PTA:**

**Option 1:** Scan the QR code and join via Totem. Note, there is a \$1 fee to use Totem.

**OR**

**Option 2:** Fill out the attached envelope and return it to the PTA box in the school office or have your student return it to their teacher. We accept cash or checks made payable to Olivehurst Eagles PTA. Yearly dues are \$10 per person.