

**Class of 2030**

# **Freshman Year at OHS**

**Counseling Department**

# OHS Counseling Team



Mateo Martinez



Lauren Pisani



Miranda Coughlin



# OHS Diploma Requirements

SUBJECT	YEARS/CREDITS
English	4 years / 40 credits
Math/Financial Literacy	3 years / 30 credits
Social Science (History)	3 years / 30 credits
Science	2 years / 20 credits (Ag = 3 years / 30 credits)
Freshman Seminar	1 year / 10 credits
Research World/Health	1/2 year + 1/2 year / 10 credits
Foreign Lang./Visual & Performing Art	1 year / 10 credits
Career Technical Education (CTE)	1 year / 10 credits
Physical Education	2 years / 20 credits
Electives	85 credits

# Credits Count!

**High School Diploma = 265 Credits**

Year Long Class = 10 credits

- Fall Semester (December) = 5 Credits
- Spring Semester (June) = 5 Credits

7 Classes per Semester = 70 Credits

70 Credits x 4 Years = 280 Credits

Summer school will  
be required if you fail  
a class.

# A-G Requirements

Requirements to go to a 4 year college after high school.

<b>A</b>	History	2 years
<b>B</b>	English	4 years
<b>C</b>	Math	3 years (4 years recommended)
<b>D</b>	Lab Science (i.e. Bio, Chem, Ag Bio, Ag Chem)	2 years (Additional years recommended)
<b>E</b>	Language Other Than English (LOTE)	2 years (3 years recommended)
<b>F</b>	Visual and Performing Art	1 year
<b>G</b>	College Prep Elective	1 year

All classes must be completed with a **"C" or better.**

# Academic Planning



## Progress Reports

- Every 4 1/2 weeks
- No credits issued
- Only a warning for student & family

## Quarter Grades

- October & March
- No credits issued
- Grades are issued
- COUNT FOR ATHLETIC, FFA & BAND ELIGIBILITY

## Semester Grades

- December & June
- 5 credits for passing each class
- Grades are issued
- Grades go on your transcript and count for your GPA!

# CTE Pathways

FINE ART	AGRICULTURE MECHANICS	AG FLORAL	ANIMAL SCIENCE	PLANT SCIENCE
Intro to Art, Digital Art, Publications or Intro to Art, Ceramics, Adv. Ceramics or Intro to Art, Studio Art, Adv. Studio Art	Intro to Ag Mechanics, Welding II, Welding III or Intro to Ag Mechanics, Woodworking II, Woodworking III	Ag Floral Design, Advanced Ag Floral Design	Animal Science, Advanced Animal Science, Farm to Fork	Plant Science, Advanced Plant Science, Farm to Fork
TRANSPORTATION	SUSTAINABLE AGRICULTURE	CHILD DEVELOPMENT/ EDUCATION		PATIENT CARE
Auto I, Auto II, Auto III	Ag Biology, Ag Chem, Interdisciplinary Ag Science	Family & Child Development, Careers with Children I & II		Medical Terminology Sports Medicine

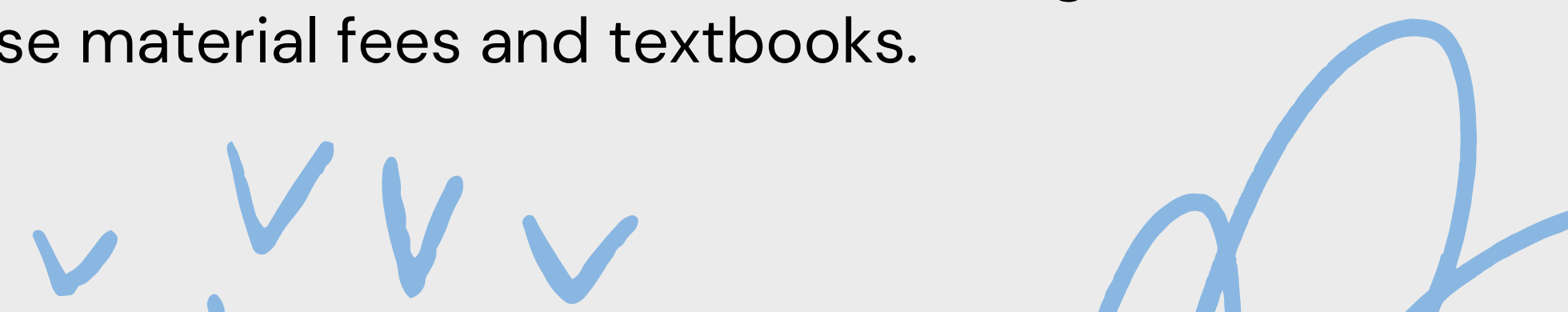


# Dual Enrollment

Classes taken at Orland High School during the regular school day and are taught by high school teachers who meet the minimum qualifications to teach at Butte College. Dual enrollment courses become part of a student's permanent college transcript and can be used at any college that accepts them.

# Concurrent Enrollment

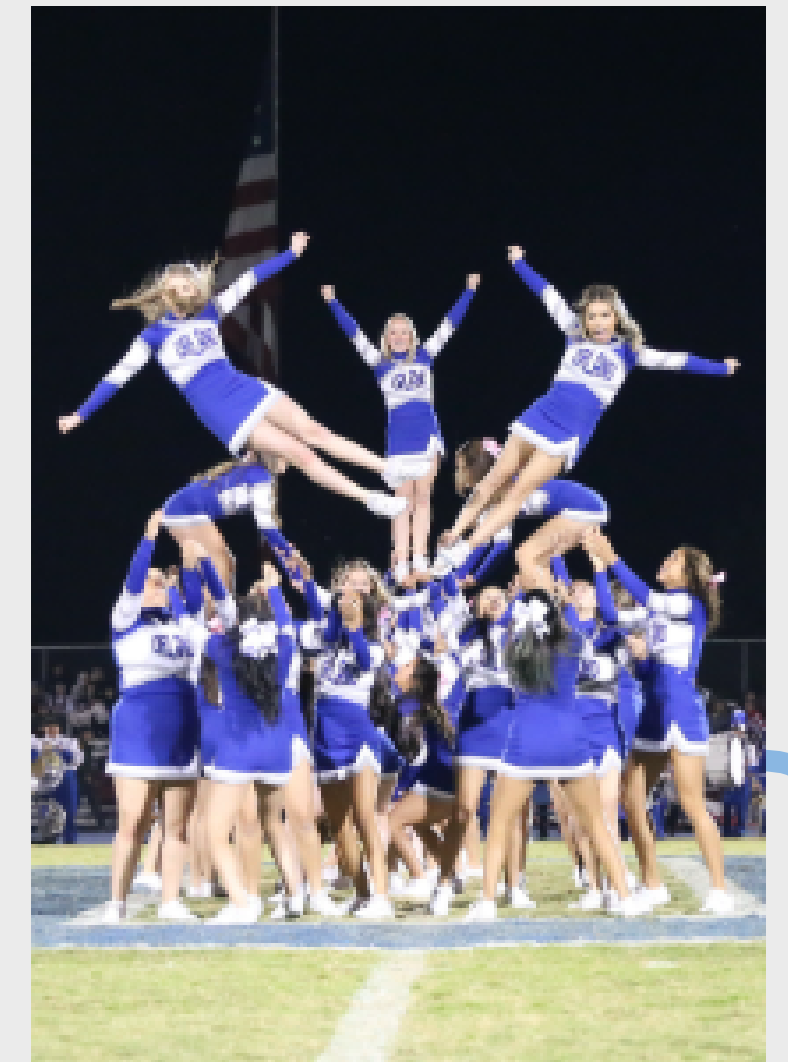
Concurrent Enrollment allows you to take Butte College courses while still attending high school, earning college credits that can also fulfill your high school requirements. Your enrollment and service fees are waived, though you'll still need to cover course material fees and textbooks.





# Fall Sports

- Football
- Girls' Tennis
- Volleyball
- Cross Country
- Swimming
- Cheer





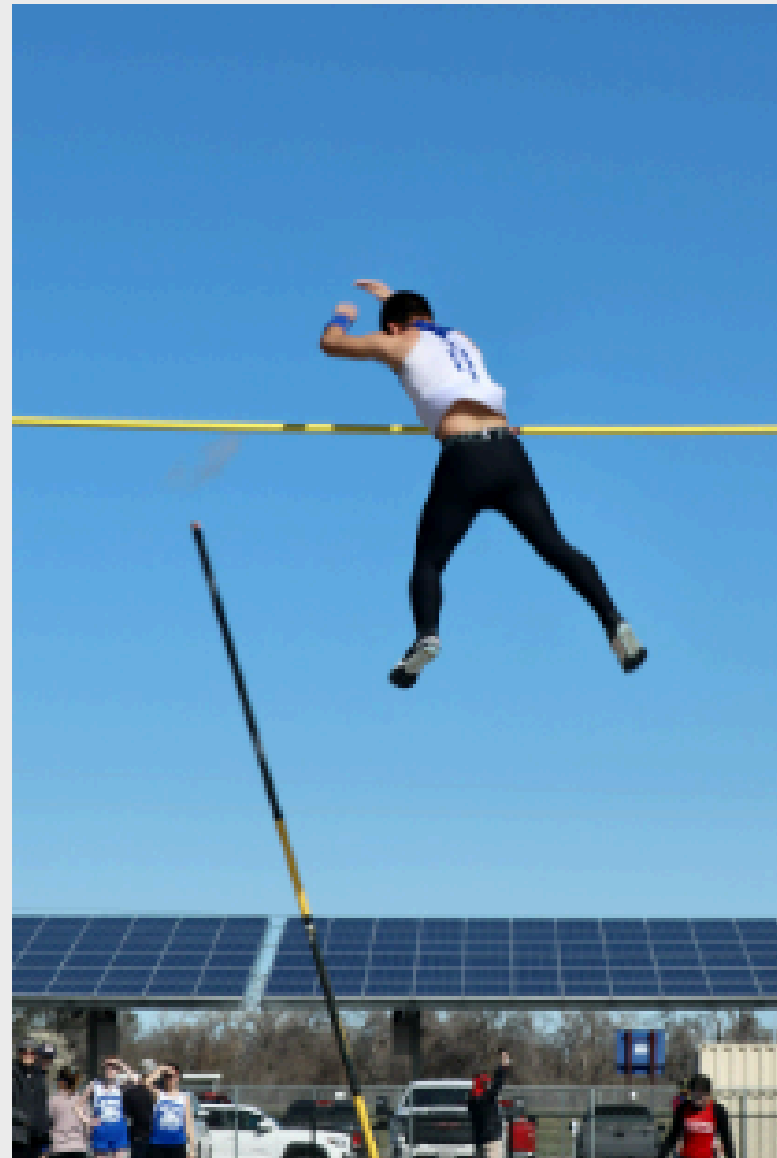
# Winter Sports

- Boys' Basketball
- Boys' Wrestling
- Girls' Basketball
- Girls' Wrestling
- Boys' Soccer
- Girls' Soccer



# Spring Sports

- Baseball
- Softball
- Boys' Tennis
- Track
- Golf
- Beach Volleyball
- Boys' Volleyball



# Clubs, Organizations & Activities

<b>Band</b>	<b>Future Farmers of America (FFA)</b>	<b>Med Ed Club</b>
<b>Choir</b>	<b>Friday Night Live (FNL)</b>	<b>Auto Club</b>
<b>Color Gaurd &amp; Winter Gaurd</b>	<b>Gifted &amp; Talented Education (GATE)</b>	<b>Chicanx Culture Club</b>
<b>Leadership</b>	<b>Students Working Against Tobacco (SWAT)</b>	<b>Bring Change to Mind (BC2M)</b>
<b>Yearbook</b>	<b>Fellowship of Christian Athletes (FCA)</b>	<b>Debate Club</b>
<b>Theater</b>	<b>California Scholarship Federation (CSF)</b>	<b>Key Club</b>
<b>Upward Bound</b>	<b>Seal of Biliteracy</b>	<b>Red Cross Club</b>
<b>Educational Talent Search (ETS)</b>	<b>Seal of Civic Engagement</b>	<b>Kiwanis Club</b>
<b>Athletics</b>	<b>Clay Target Team</b>	<b>Trap Shooting Team</b>

# Attendance

- Your **attendance** greatly affects your grades and performance in school

## What to do if you miss school:

- Contact attendance office
- Email your teachers for your assignments
- Check teacher websites/google classroom
- Do makeup tests promptly