

# STATE PRESCHOOL PROGRAM



SRVUSD



# WELCOME!

**KATIE WITT**

Executive Director, Elementary Education  
Preschool Director

**ASHLEY FABRO**

TSA-Early Childhood Education



# WHAT IS CSPP?

CSPP STANDS FOR THE CALIFORNIA STATE PRESCHOOL PROGRAM, A STATE-FUNDED PROGRAM THAT SERVES CHILDREN AGES 3 TO 4 WHOSE FAMILIES QUALIFY.



# **PROGRAM HISTORY**

**THE CALIFORNIA STATE PRESCHOOL PROGRAM STARTED IN 1956 TO PROVIDE EDUCATIONAL OPPORTUNITIES TO ELIGIBLE CHILDREN AGES 3 AND 4 YEARS OLD.**

**SRVUSD BEGAN ITS PROGRAM IN 2017, SERVING UP TO 48 CHILDREN AT LIVE OAK AND WALT DISNEY ELEMENTARY SCHOOLS. THE PROGRAM FOLLOWS STATE REGULATIONS FOR QUALITY AND SAFETY.**

# **OUR MISSION**

**WE CREATE A POSITIVE, SAFE SPACE THAT SUPPORTS THE WHOLE CHILD'S DEVELOPMENT: SOCIAL, EMOTIONAL, COGNITIVE, AND PHYSICAL.**



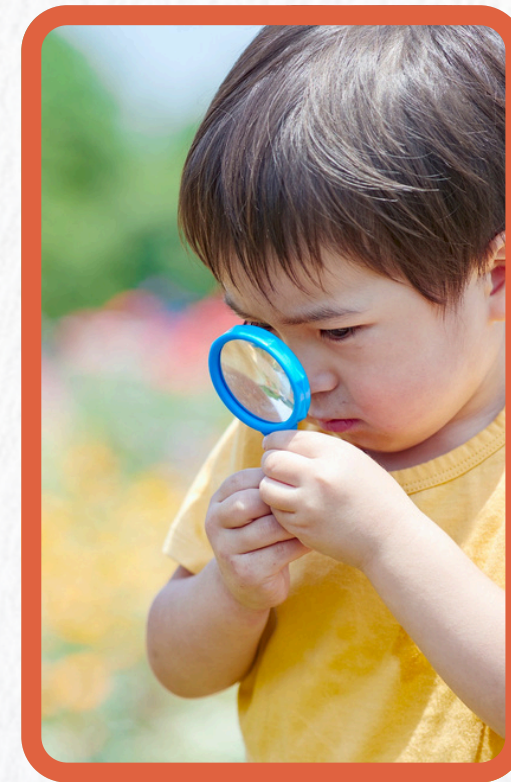
# AGENDA

- Program Overview
- Eligibility Requirements
- Interest Survey and Pre-screening
- Enrollment Process
- Next Steps



# PROGRAM OVERVIEW

Play-based curriculum aligned with Preschool Transitional  
Kindergarten Learning Foundations  
Encourages creativity, problem-solving, and independence  
Builds strong family-school partnerships  
Smooth transition to TK.



# PROGRAM OVERVIEW

2 locations:

Walt Disney and Live Oak

Hours\*

M,T,TH,F from 11:40 to 3:00

Wed from 12:00 to 3:00

1:8 ratio:

1 credentialed teacher and 2  
paraprofessionals

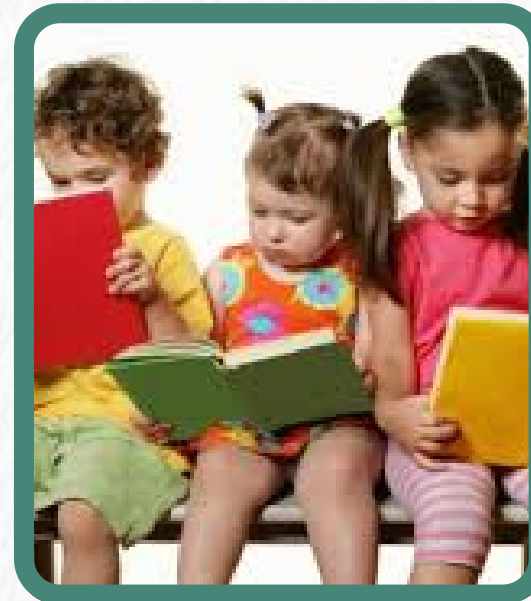
(\*hours are subject to change)



# ELIGIBILITY REQUIREMENTS

The program is designed to assist families in need including:

- Those who are income-eligible
- Current aid recipients
- Unhoused
- Have foster children
- Children who are eligible for Special Education services and have an Individualized Education Program (IEP)



# CHILDREN WITH AN IEP

- Special Education is a set of services and supports provided to children who have identified developmental delays or disabilities, designed to help them access learning and participate fully in school.
- An Individualized Education Program (IEP) is a personalized plan developed by a team (including families) that outlines a child's goals, services, and supports based on their unique needs.
- The IEP team meets regularly to review progress and adjust supports as needed, ensuring each child receives the appropriate instruction, therapies, and accommodations to be successful.
- If you have any questions or would like support, please reach out to the SRVUSD Special Education Department.



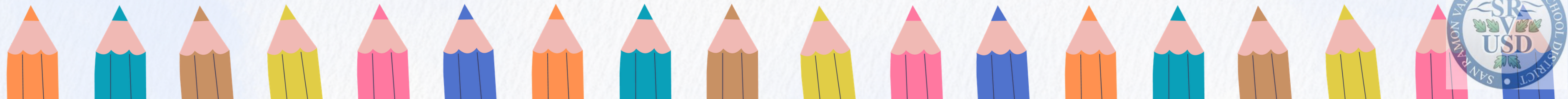
# INTEREST SURVEY & PRESCREENING

- An interest/pre-screening application is required, as specific eligibility criteria must be met.
- The pre-screening application asks for gross monthly income.
- Families who meet the eligibility requirements will be contacted to set up an enrollment appointment



# ENROLLMENT PROCESS

- FILL OUT INTEREST/PRESCREENING FORM
- YOU WILL GET AN EMAIL CONFIRMING ELIGIBILITY
  - REQUEST DOCUMENTATION (BIRTH CERTIFICATE, IMMUNIZATIONS, PROOF OF RESIDENCY, INCOME, ETC)
  - FORMS TO DOWNLOAD AND FILL OUT
- SCHEDULE AN IN PERSON APPOINTMENT TO REVIEW DOCUMENTS (60 MIN)
- ONCE COMPLETE, PAPERWORK WILL BE SENT TO THE COUNTY FOR FINAL APPROVAL
- ENROLL IN SRVUSD
- START!



# NEXT STEPS

- Fill out the [State Preschool Pre-Screening Application](#)
- Receive email with details and a link to schedule appointment
- Collect requested documentation/fill out forms
- Intake appointment
- enroll in SRVUSD

SCAN ME!



# QUESTIONS?

THANK YOU!

ASHLEY FABRO  
afabro@srvusd.net

