

Blanket for Martin



Yarn:

Sheepjes Catona, shade 74 was used for the sample. It is a 100% mercerized cotton yarn with 50 g / 125 m yardage. For the size 70 cm x 70 cm you need approx. 350 g yarn.

Gauge:

For me 2.75 mm needle gave a nice fabric, the gauge is 28 stitches x 40 rows = 10 cm x 10 cm in stockinette stitch blocked.

The gauge is not particularly important to match, but it helps to determine the size of the blanket. You can make it from thinner or thicker yarn with the right needle size, or you can use different fiber type, I just recommend to knit gauge to check the fabric.

Pattern:

Cast on 180 stitches with your favorite method, it doesn't need to be stretchy, you have to pay attention not to get wavy cast on row. I used knitted cast on, but every solution can work.

The bottom border is made with 28 rows of garter stitch. If your gauge is very different you have to pay attention to be the same height of the bottom border and the same width of the border on the left and right side. I made 5 cm border that is made with 28 rows of garter stitch and 15-15 stitches on the left and right border. I suggest to make a small knitted sample to determine how much stitches and rows you need for these borders.

The main part of the blanket is made in the following way:

1 edge stitch, 14 knit, repeat chart 7.5 times, 14 knit, 1 edge stitch.

The edge stitch is made by slip 1 with yarn in the front at the beginning of the row, at the end of the row it is 1 knit stitch.

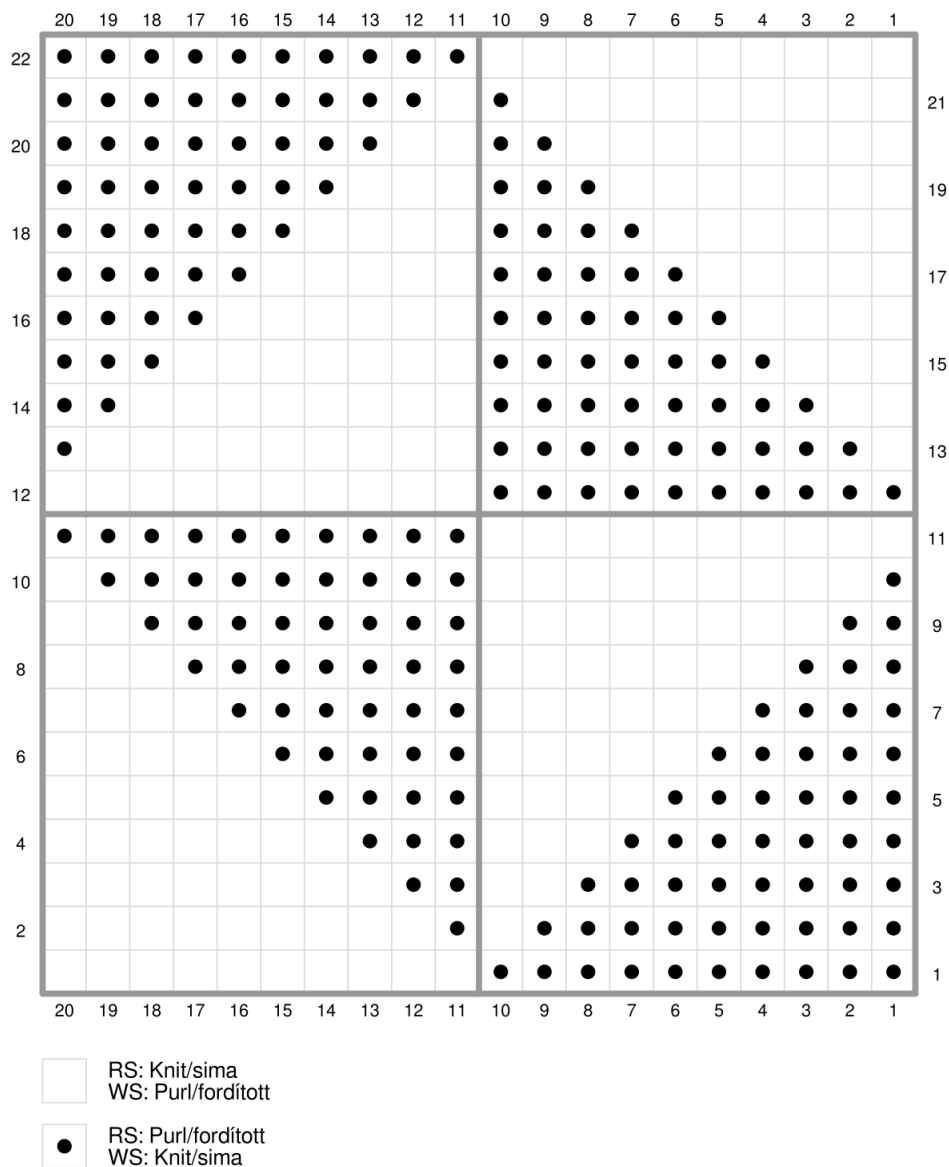
Written instruction:

p - purl stitch

k - knit stitch

1. row: 1 edge stitch, 14k, *10p, 10k*, 7 times, 10p, 14k 1 edge stitch
2. row: 1 edge stitch, 14k, 1p, 9k, *9p, 1k, 1p, 9k* 7 times, 14k, 1 edge stitch
3. row: 1 edge stitch, 14k, *8p, 2k, 2p, 8k* 7 times, 8p, 2k, 14k, 1 edge stitch
4. row: 1 edge stitch, 14k, 3p, 7k, *7p, 3k, 3p, 7k* 7 times, 14k, 1 edge stitch
5. row: 1 edge stitch, 14k, *6p, 4k, 4p, 6k* 7 times, 6p, 4k, 14k, 1 edge stitch
6. row: 1 edge stitch, 14k, 5p, 5k, *5p, 5k, 5p, 5k* 7 times, 14k, 1 edge stitch
7. row: 1 edge stitch, 14k, *4p, 6k, 6p, 4k* 7 times, 4p, 6k, 14k, 1 edge stitch
8. row: 1 edge stitch, 14k, 7p, 3k, *3p, 7k, 7p, 3k* 7 times, 14k, 1 edge stitch
9. row: 1 edge stitch, 14k, *2p, 8k, 8p, 2k* 7 times, 2p, 8k, 14k, 1 edge stitch
10. row: 1 edge stitch, 14k, 9p, 1k, *1p, 9k, 9p, 1k* 7 times, 14k, 1 edge stitch
11. row: 1 edge stitch, 14k, *10k, 10p* 7 times, 24k, 1 edge stitch

12. row: 1 edge stitch, 14k, 10k, *10p, 10k* 7 times, 14k 1 edge stitch
13. row: 1 edge stitch, 14k, *1k, 9p, 9k, 1p* 7 times, 1k, 9p, 14k, 1 edge stitch
14. row: 1 edge stitch, 14k, 8k, 2p, *2k, 8p, 8k, 2p* 7 times, 14k, 1 edge stitch
15. row: 1 edge stitch, 14k, *3k, 7p, 7k, 3p* 7 times, 3k, 7p, 14k, 1 edge stitch
16. row: 1 edge stitch, 14k, 6k, 4p, *4k, 6p, 6k, 4p* 7 times, 14k, 1 edge stitch
17. row: 1 edge stitch, 14k, *5k, 5p, 5k, 5p* 7 times, 5k, 5p, 14k, 1 edge stitch
18. row: 1 edge stitch, 14k, 4k, 6p, *6k, 4p, 4k, 6p* 7 times, 14k, 1 edge stitch
19. row: 1 edge stitch, 14k, *7k, 3p, 3k, 7p* 7 times, 7k, 3p, 14k, 1 edge stitch
20. row: 1 edge stitch, 14k, 2k, 8p, *8k, 2p, 2k, 8p* 7 times, 14k, 1 edge stitch
21. row: 1 edge stitch, 14k, *9k, 1p, 1k, 9p* 7 times, 9k, 1p, 14k, 1 edge stitch
22. row: 1 edge stitch, 14k, 10p *10k, 10p* 7 times, 14k, 1 edge stitch



The chart should be repeated 11 times.

The top border is the same as the bottom border, 28 rows of garter stitch, then we bind off with the favorite bind of method. Stretchy bind off isn't needed, rather pay attention not to have a wavy border.

Thank you for supporting my blog. I would like to ask you to use the pattern just for private purposes and don't share it in any form, just with the link of the blog's webpage or the buymeacoffe page of the blog.