



SUMMER 2025

ALDER GROVE

NEWSLETTER

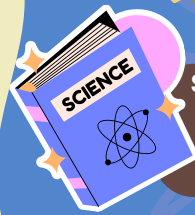
CONGRATULATIONS
ALDER GROVE CHARTER SCHOOL
CLASS OF 2025
GRADUATES

**FOLLOW US ON
SOCIAL MEDIA!**



**CONGRATULATIONS TO OUR
WRITING CONTEST WINNER!
ARIANNA PORTER**

**THANK YOU TO:
NIKO PAYNE
DONALD LEVAUGH
VIVIAN NORRIS-NEELY**



Science Fair experiments can be completed for one year before the fair! Please contact Kathy Yeager if you want support with science experiments you may be interested in!"

**AGCS
END OF YEAR FAMILY FEEDBACK**



[HTTPS://FORMS.GLE/GQKYFEFJNHTQYZC9](https://forms.gle/GQKYFEFJNHTQYZC9)

**PLEASE SUPPORT ALDER GROVE BY
PARTICIPATING IN THIS IMPORTANT SURVEY.
YOUR VOICE TRULY MATTERS.**

**AGCS END OF YEAR
STUDENT FEEDBACK**



[HTTPS://FORMS.GLE/AVEA4UAXQ8C7V88U5](https://forms.gle/AVEA4UAXQ8C7V88U5)



If you see this hand that means the flyer is a LINK to more information!



BETTY'S SUMMER CAMPS

This year we will be providing three different Summer Camp opportunities!

Completely Free of Charge!

The Mattole and Blue Slide camps will be overnight and for ages 7-14.

Our other camp is a Day camp at Betty's Day Center which will be put on by The Santa Rosa Mission Team for ages 4-14 from 9am - 5 pm

Provided Materials

- ✓ Camping equipment provided
- ✓ All meals, snacks, and water bottles provided daily
- ✓ Art & crafts supplies, hats & flashlights, and instruments will be provided

Betty Kwan Chinn
Homeless Foundation



ALL YOUTH 18 YEARS OF AGE & YOUNGER CAN ACCESS FREE NUTRITIOUS MEALS THIS SUMMER!

SUMMER COMMUNITY MEALS 2025



MONDAY - FRIDAY
JUNE 23 - JULY 31, 2025

No service July 4th

AT THE LOCATIONS BELOW MEALS MUST BE CONSUMED ON-SITE DURING THE GIVEN TIME.



Washington
3322 Dolbeer St
11:00 AM - 12:30 PM



Eureka High
1915 J St
Breakfast 8:30AM - 9:00 AM
12:15 PM - 12:30 PM



Alice Birney
717 South Ave
Breakfast 7:30AM - 7:45 AM
11:30 AM - 12:00 PM

COMMUNITY MEAL PICKUP SITES • 12 PM TO 1:00 PM



Fortuna
2292 Newburg Rd
Fortuna, 95540

Meals can be picked up and taken to go from these Community Sites.



RIO DELL
50 Center St, Rio Dell, 95562



• EUREKA CITY SCHOOLS IS AN EQUAL OPPORTUNITY PROVIDER.

FOR QUESTIONS CALL FOOD SERVICES AT (707) 441-2501.

FOR MORE INFORMATION - WWW.ECSNUTRITIONSERVICES.COM

SCHOLARSHIP RAFFLE WINNERS ANNOUNCED!



In our second scholarship raffle of the year, we're excited to announce that **Morgan Chittenden** and **Jade Putnam** have each won a \$500 scholarship toward college or trade school. Congratulations to both!

We also had 10 other lucky winners who scored gift cards to the movies, Dutch Bros, or Renner Gas.

All winners have been notified either in person or by mail. Thanks to everyone who participated!



A New Summer Food Program for Kids!

SUN Bucks is a new food program that will give families \$120 per eligible child to buy groceries during the summer. Children who get SUN Bucks can still receive other food programs like CalFresh and meals at Summer Meal Sites. SUN Bucks will not affect immigration status.

CAN MY CHILD GET SUN BUCKS?

Your child will automatically get SUN Bucks if:

- Your family got CalFresh, CalWORKS, or Medi-Cal during the 2023-24 school year.
- Your child is experiencing homelessness, living in foster care, or is part of a migrant family.

Make sure your mailing address is updated with your county so your SUN Bucks are sent to the right place! You can do it online at BenefitsCal.com, or call or visit your local county office (use Help tab for office locations)

Even if your family isn't enrolled in the programs above, your child still may be eligible!

They must be attending schools, including schools with Head Start programs, that are part of the National School Lunch and/or School Breakfast Programs, and approved for free or reduced-price meals based on your family's income.

Make sure to submit a school meal application form or alternative income form by August 31, 2024 - ask your child's school what form to use and how to submit it if you're not sure.

If you have recently moved, be sure to call the helpline (which will be available soon on the California Department of Social Services website at the bottom of this flier) to update your address.

Your child may be eligible if your family's annual gross income is LESS THAN:

Family Income	Family Size
\$36,482	1 person
\$45,991	2 people
\$55,500	3 people
\$65,009	4 people

HOW DO SUN BUCKS WORK?

- You will get SUN Bucks on an S-EBT card mailed to your home or designated mailing address.
- You will get one new SUN Bucks card for each eligible child.
- The S-EBT card will work like a debit card. You can use SUN Bucks to buy food (except prepared/hot foods) at grocery stores, farmers markets, and other stores that accept CalFresh EBT benefits.
- SUN Bucks must be used within 122 days of the date when S-EBT benefits are loaded onto the card.

California Department of Social Services: cdss.ca.gov/sun-bucks
California Association of Food Banks: cafoodbanks.org/sun-bucks

*For 2023-24 School Year



TK- THIRD GRADE Mornings with Sunshine

MON-FRIDAY 10:25-11:15 ZOOM

- ✓ Daily class community
- ✓ Strong Start
- ✓ Games
- ✓ Explore: language, math, science, history, geography, & movement

TO ENROLL NOW

email:

sunshine.lee@aldergrovecharter.org

**15 Students &
Parent participation
needed**



**COMING
SOON!**

Can't come
onsight?

Life Writing Zoom

Mondays 3:30-4:30 pm

Welcome, Student Writers!

Enroll in this C+ class to share your life stories with fellow students. Look forward to brainstorming topics based on what matters to you and crafting memoir stories that reflect your journey.

email sunshine.lee@aldergrovecharter.org with questions

NEW SCHOOL YEAR

Check out these classes
available next school year!

Fun with Poetry & High School Poetry

**Onsite and Online
Join Now!**



POETRY WORKSHOP

Learn to write poetry
in a fun way!

Read inspiring poems

Sample student
poems:

<https://docs.google.com/document/d/1XW8RJLJGCSJMF1K7UDKEPMBUEROHOUBB9SMSGC1FI/EDIT?USP=SHARING>

WHY JOIN?

Creative space
for students to
shine!!

Visual arts and
poetry projects

Classroom
community

Write about
what's
important to you

CLASS OPTIONS

Onsite Grades 4-8
Wednesdays,
11:30-12:40

Online Grades 4-8
Thursdays,
1:00-1:55

Online High School
+7th/8th
Mondays,
11:00-12:10

**2.5 High School
Credits!**

WHERE IS POETRY?

Poetry is in moonlight
Flooding down to the ground

Poetry is in a wolf's howl
Soaring through the night

Poetry is in the sunset
Marking the edge of day

Poetry is in the petals
Spiraling to the grass

Poetry is in the spider's web
Fragile and yet unbreakable

Poetry is in the ocean
Washing up on the sand

Wherever it comes from
Welcome it

Bella Beard, 7th Grade

**CLICK HERE TO READ
MORE STUDENT POEMS!**