



EL DORADO COUNTY CHARTER SELPA

Special Education Local Plan Area



IMPORTANT UPDATES

SEIS Graduate Exits

Students with disabilities (SWD) who graduate with a standard diploma, alternate diploma, or certificate of completion **MUST have their exit date in SEIS set to the day after their graduation date** (as reported to CALPADS) if they will not be returning.

Failure to exit after the day they completed High School will directly impact your High school cohort and your California State dashboard results.

Alternative Pathway to Diploma Graduates

High school students with disabilities who are graduating with an Alternative Pathway to a diploma should use an exit code 71 (High School Completer - Student left high school after completing their academic program) if they will not be returning to your LEA the next academic year. This includes students who graduated from high school with a certificate of completion or other than a diploma or received a high school completion/achievement certificate through GED or the requirements of EC 56390). **The exit date should be the day AFTER their last day of school.**



SEIS

District Level User

Are you a New District Level User?

Explore our on-demand videos this summer to stay informed about District-Level User duties and responsibilities.

[Navigating SEIS for District-Level Users](#)

[SEIS Compliance Management for District-Level Users](#)

Exit Students

Ensure all students who will not be attending your LEA in the 2026/2027 academic year have been exited with the appropriate code and date before July 1st. Confirm students that were eligible on the last day, are still eligible by running the 16.28 report in CALPADS.

Postsecondary Report

For High School LEAs, submit your postsecondary report once all 2024/2025 survey results have been entered into SEIS. SELPA cannot SELPA approve without postsecondary submission.

Be sure to remind this year's graduates that you will be contacting them next year for postsecondary status.

Manage SEIS Users

Audit all SEIS user accounts for users who will not be returning next academic year. Providers who are leaving need to have their caseload transferred before being removed from SEIS.

Please wait until July 1st to rollover grades and add students for the upcoming school year in SEIS

Adding them early may cause adoption transactions to post to the wrong academic year.



Stay Sharp This Summer with On-Demand Learning

Take advantage of our on-demand training videos this summer to stay up to date on the roles and responsibilities of providers and case managers.

SEIS for Case Managers and Providers-Part 1 **coming in July!**

[SEIS for Case Managers and Providers-Part 2](#)

Unaffirmed Meetings

No meetings should be left unaffirmed, except for initials. Audit timeline compliance if the meeting was late, you must add a delay code.

Parent Signatures

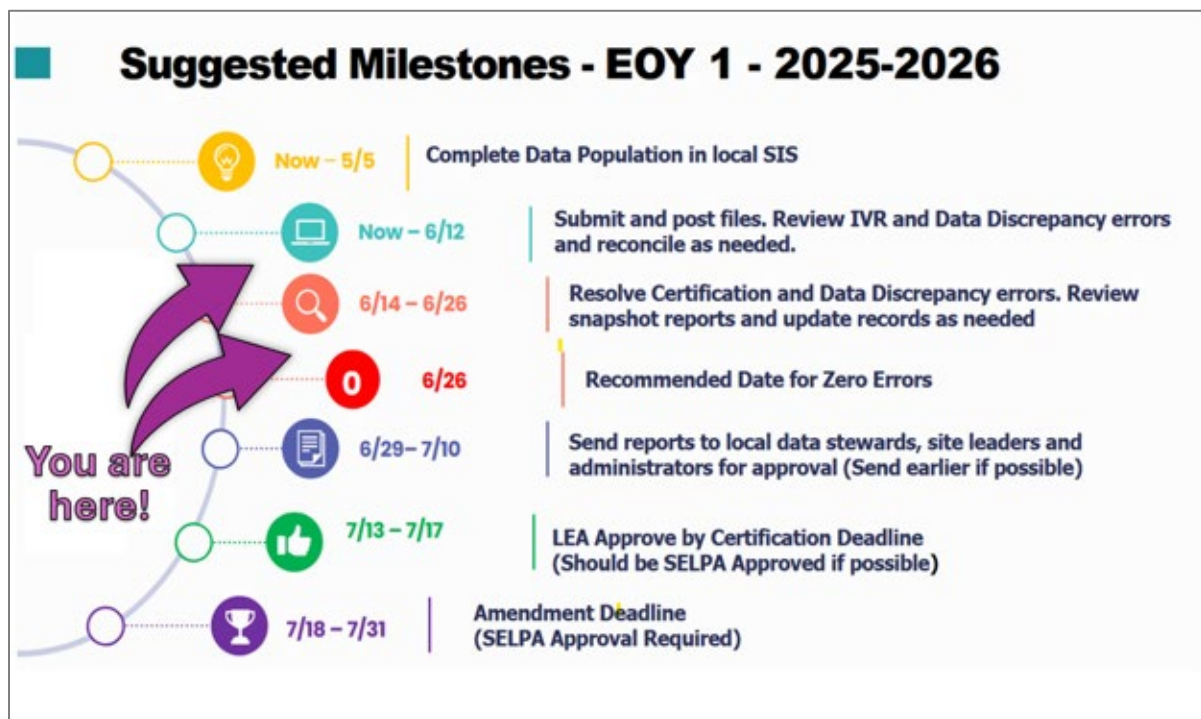
Audit your records for missing parent signatures. If you have signatures, add them to the SEIS record before leaving for the summer.

Resolve Fatal Errors by June 26

The EOY1 reporting window opened on May 5th. Ensure your data is submission-ready by correcting all fatal errors by June 26.

For a streamlined review process, watch our Data Discrepancies guide [here](#).

Stay on track with our [EOY Check List](#).



We offer virtual, in-person training and events throughout the year

Explore our YouTube [Video Training Library](#).



Our colleagues at High Quality IEPs are providing new trainings, you can find the trainings by visiting them at <https://highqualityieps.net/>

While no SEIS virtual trainings are scheduled until the next academic year, you can continue learning through the Video Training Library.

Be sure to explore the library and [subscribe](#) to stay up to date with the latest content!

We've recently added brand new [on-demand training videos](#), giving you flexible, anytime access to valuable tutorials focused on SEIS and CALPADS data reporting.