

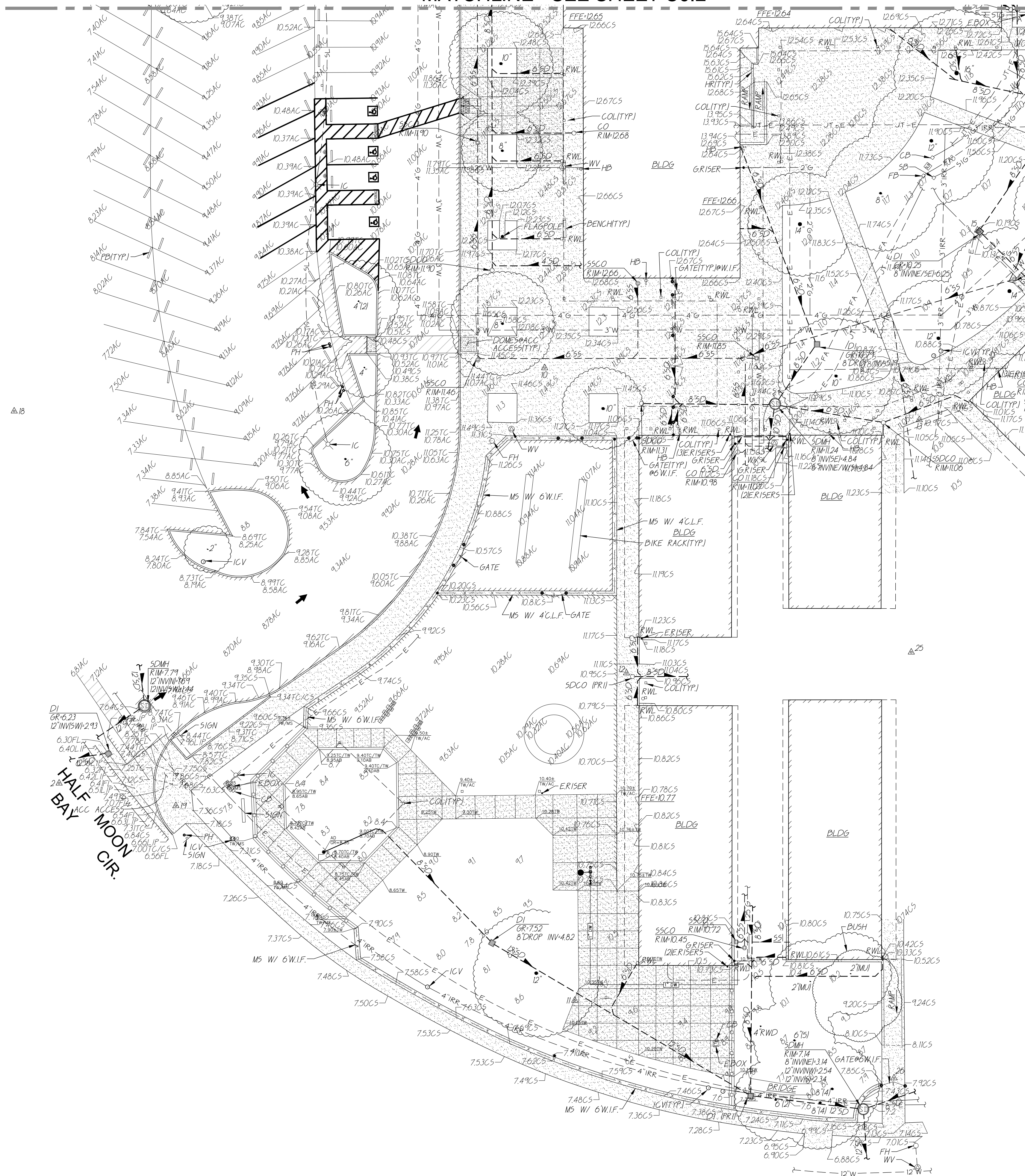
EXISTING TOPOGRAPHY

- = PROPERTY LINE
- - - = CENTERLINE
- - - = EASEMENT
- ⊕ = PROPERTY CORNER FOUND AS NOTED
- = PROPERTY CORNER NOTHING FOUND OR SET
- △123 = TEMPORARY BENCHMARK (SEE TBM LIST FOR INFO)
- = SWALE OR DRAINAGE FLOW
- = DRAINAGE FLOW
- = FENCE (TYPE NOTED)
- = TREE (SIZE/TYPE INDICATED)
- = SLOPE
- 100 = CONTOUR
- = CONCRETE SURFACE
- = EDGE OF ASPHALT
- = EDGE OF BUILDING
- ⊕ = SIGN
- = POST OR BOLLARD
- 99.9 = GROUND ELEVATION
- 99.99 = HARD SURFACE ELEVATION

EXISTING UTILITIES

- 12"SD → = STORM DRAIN LINE (SIZE & DIRECTION OF FLOW)
- 12"SD - - - = STORM DRAIN LINE (RECORD INFORMATION)
- 12"SD - - - = STORM DRAIN LINE (UNDERGROUND LOCATING)
- ⊕ = STORM DRAIN MANHOLE
- = STORM DRAIN CLEANOUT
- ⊕ = DROP INLET
- ⊕ = AREA DRAIN
- ⊕ = STORM DRAIN BOX
- = RAIN WATER LEADER
- = DOWNSPOUT
- 12"SS → = SANITARY SEWER LINE (SIZE & DIRECTION OF FLOW)
- 12"SS - - - = SANITARY SEWER LINE (RECORD INFORMATION)
- 12"SS - - - = SANITARY SEWER LINE (UNDERGROUND LOCATING)
- ⊕ = SANITARY SEWER MANHOLE
- ⊕ = SANITARY SEWER CLEANOUT
- ⊕ = SANITARY SEWER BOX
- W --- = WATER LINE (SIZE INDICATED)
- W - - - = WATER LINE (RECORD INFORMATION)
- W - - - = WATER LINE (UNDERGROUND LOCATING)
- ⊕ = WATER MANHOLE
- ⊕ = WATER VALVE
- ⊕ = WATER METER
- ⊕ = WATER BOX
- ⊕ = IRRIGATION CONTROL VALVE
- ⊕ = FIRE HYDRANT
- ⊕ = BACKFLOW PREVENTER
- ⊕ = SPRINKLER
- ⊕ = HOSE BIBB
- OH-E --- = OVERHEAD ELECTRIC LINE
- E --- = UNDERGROUND ELECTRIC LINE
- E - - - = UNDERGROUND ELECTRIC LINE (RECORD INFORMATION)
- E - - - = UNDERGROUND ELECTRIC LINE (UNDERGROUND LOCATING)
- ⊕ = ELECTRIC MANHOLE
- ⊕ = UTILITY POLE (WITH GUY WIRE)
- ⊕ = ELECTRIC METER
- ⊕ = ELECTRIC BOX
- ⊕ = FIRE BOX
- ⊕ = SIGNAL BOX
- ⊕ = STREET LIGHTING BOX
- ⊕ = TRAFFIC SIGNAL BOX
- ⊕ OR X --- = LIGHT STANDARD
- ⊕ = SIGNAL LIGHT
- ⊕ = FLOOD LIGHT
- ⊕ = ELECTRICAL OUTLET
- G --- = GAS LINE (SIZE INDICATED)
- G - - - = GAS LINE (RECORD INFORMATION)
- G - - - = GAS LINE (UNDERGROUND LOCATING)
- ⊕ = GAS MANHOLE
- ⊕ = GAS VALVE
- ⊕ = GAS METER
- T --- = TELEPHONE LINE
- T - - - = TELEPHONE LINE (RECORD INFORMATION)
- T - - - = TELEPHONE LINE (UNDERGROUND LOCATING)
- ⊕ = TELEPHONE MANHOLE
- ⊕ = COMMUNICATIONS BOX
- ⊕ = TELEPHONE BOX

MATCHLINE - SEE SHEET C0.2

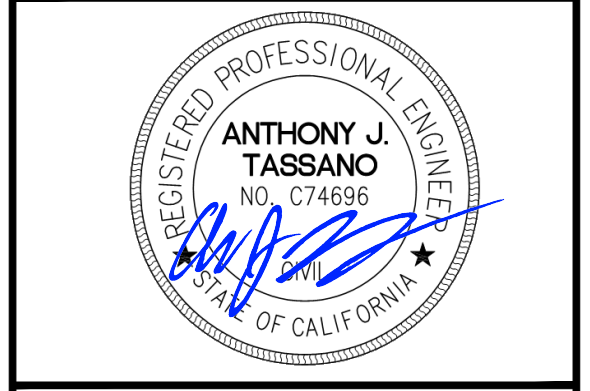


A.P.N.	045-581-002 045-622-001
BENCHMARK NO.	
ELEV.	6.45

HELD FOUND BCM IN WELL AT INTERSECTION HALF MOON BAY CIR. AND BIG ISLAND RD.

HORIZONTAL SCALE:	AS NOTED
VERTICAL SCALE:	N/A
JOB NO:	26-031
DESIGNED BY:	AT
DRAWN BY:	AT
CHECKED BY:	AT
DATE:	03/26/2026

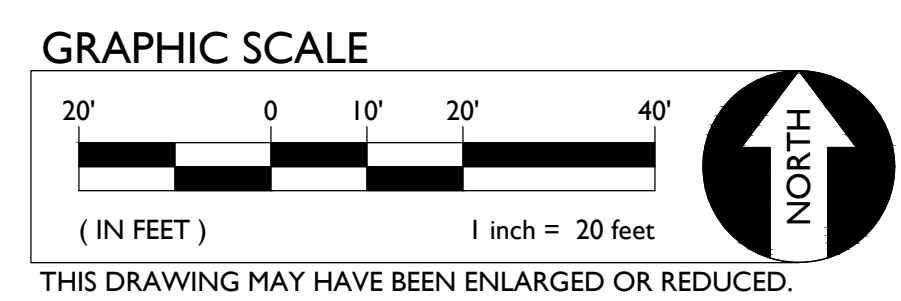
REVISIONS	NO.	DESCRIPTION	DATE	BY



TOPOGRAPHIC SURVEY

**BRIDGEWAY ISLAND K-8 SCHOOL
HARDCOURT REPLACEMENT PROJECT**

3255 HALF MOON BAY CIRCLE
WEST SACRAMENTO, CA 95691

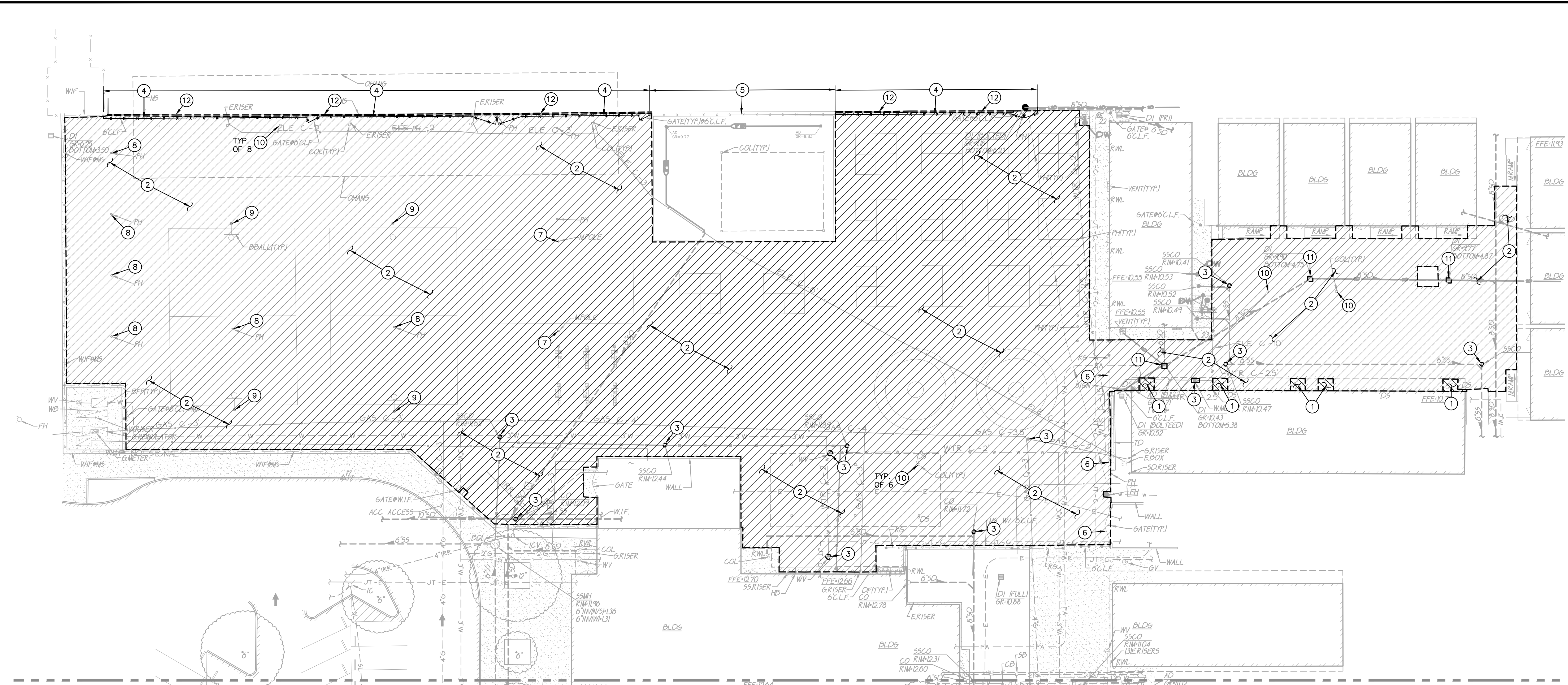


TITLE: TOPOGRAPHIC SURVEY

PROJECT: BRIDGEWAY ISLAND K-8 SCHOOL
HARDCOURT REPLACEMENT PROJECT

SHEET NO. **C0.3**

FILENAME: \\26-031\CIVIL\DWG\26-031-C11-C12.DWG PLOTTED: Thursday, March 12, 2026



MATCHLINE - SEE SHEET C1.2

DEMOLITION GENERAL NOTES

1. REFER TO ARCHITECTURAL, LANDSCAPE, ELECTRICAL AND PLUMBING PLANS FOR ADDITIONAL DEMOLITION ITEMS.
2. IN THE EVENT THAT ANY UNUSUAL CONDITIONS NOT COVERED BY THE GEOTECHNICAL INVESTIGATION REPORT OR ARE ENCOUNTERED DURING GRADING OPERATIONS THE GEOTECHNICAL ENGINEER AND THE ARCHITECT SHALL BE IMMEDIATELY NOTIFIED FOR DIRECTIONS.
3. ADDITIONAL DEMOLITION INFORMATION MAY BE SHOWN ON THE GRADING, DRAINAGE, AND UTILITY PLANS, AND THOSE PLANS PREPARED BY OTHER DISCIPLINES FOR THIS PROJECT.
4. ALL DEMOLISHED ITEMS SHALL BE DISPOSED OF OFFSITE AT A SUITABLE, LEGAL, DUMP SITE OR OTHER FACILITY.
5. ALL DISPOSED OF MATERIALS SHALL BE RECYCLED IF POSSIBLE.
6. THE SCHOOL DISTRICT SHALL HAVE SALVAGE RIGHTS TO ANY DEMOLISHED ITEMS SHOWN HEREON. THE CONTRACTOR SHALL GIVE THE DISTRICT NOTICE 7 DAYS PRIOR TO THE START OF DEMOLITION. THE DISTRICT SHALL MOVE ANY RETAINED ITEMS OUT OF THE CONTRACTORS WORK AREA, UNLESS ANOTHER ARRANGEMENT IS MADE WITH THE CONTRACTOR. ANY REMAINING ITEMS BECOME THE PROPERTY OF THE CONTRACTOR AND SHALL BE REMOVED FROM THE SITE. ANY ITEMS NOT SHOWN FOR REMOVAL SHALL REMAIN AND SHALL BE PROTECTED FROM DAMAGE DURING CONSTRUCTION TO A REASONABLE EXTENT.
7. EXISTING UTILITY STRUCTURES IN AREAS OF NEW PAVING SHALL BE REMOVED AND REPLACED WITH NEW BOX/COVER AT NEW GRADE UNLESS SPECIFICALLY NOTED OTHERWISE.
8. ITEMS OUTSIDE THE LIMITS OF DEMOLITION SHALL REMAIN AND BE PROTECTED FROM DAMAGE DURING CONSTRUCTION.
9. EXISTING UTILITY STRUCTURES AND PIPING NOT SHOWN ON DEMOLITION PLAN TO BE REMOVED SHALL REMAIN AND BE PROTECTED.
10. SAWCUTS AND SUBSEQUENT PATCH BACK OF CONCRETE WALKS, SHALL BE TO THE EXISTING CONCRETE JOINT BEYOND THE NEAREST LOCATION OF DEMOLITION AS SHOWN. A REASONABLE EFFORT HAS BEEN MADE TO LOCATE, SHOW AND COORDINATE WITH EXISTING JOINTS, HOWEVER IF FIELD CONDITIONS ARE OTHERWISE, IT IS UNDERSTOOD TO REMOVE AND PATCH BACK TO THE NEAREST JOINTS BEYOND DEMOLITION.
11. PRIOR TO THE START OF CONSTRUCTION, VERIFY AND POTHOLE ALL UTILITY POINTS OF CONNECTION FOR LOCATION, DEPTH, AND SIZE. IF CONFLICT IS FOUND, CONTACT THE ENGINEER IMMEDIATELY FOR DIRECTION.
12. WITHIN LANDSCAPE AREAS TO BE DEMOLISHED THERE MAY BE EXISTING IRRIGATION LINES NOT SHOWN ON THIS PLAN. CONTRACTOR SHALL REMOVE LATERAL LINES AND HEADS ENCOUNTERED. MAIN LINES AND CONTROL WIRES MAY ONLY BE REMOVED PROVIDED THAT ROUTING IS KNOWN AND REMOVAL WILL NOT DEACTIVATE AN IRRIGATION SYSTEMS INTENDED TO REMAIN. IF CONFLICT IS FOUND, CONTACT THE ENGINEER FOR DIRECTION.
13. COORDINATE REMOVAL OF LANDSCAPE ITEMS WITH LANDSCAPE PLANS.

DEMOLITION NOTES

- 1. REMOVE AND DISPOSE OF EXISTING CONCRETE PAVING AND AGGREGATE BASE. WHERE SAWCUTS ARE NECESSARY, THEY SHALL BE A NEAT STRAIGHT LINE. CUT SHALL BE MADE AT NEAREST EXISTING JOINT TO LOCATION SHOWN.
- 2. REMOVE AND DISPOSE OF EXISTING ASPHALT PAVING AND AGGREGATE BASE. WHERE SAWCUT EDGES ARE SHOWN, THEY SHALL BE A NEAT STRAIGHT LINE. MAINTAIN CLEAN STRAIGHT CUT EDGE UNTIL NEW PAVING PLACED.
- 3. REMOVE EXISTING UTILITY BOX AND/OR FRAME AND COVER AND PROVIDE NEW. NEW BOX SHALL BE SIMILAR IN SIZE, BUT WITH TRAFFIC RATING AND SLIP RESISTANT COVER.
- 4. REMOVE AND DISPOSE OF EXISTING FENCE, GATES, POSTS AND ASSOCIATED FOOTINGS.
- 5. REMOVE AND DISPOSE OF EXISTING FENCE FABRIC. POSTS AND RAILS TO REMAIN.
- 6. EXISTING FENCE AND GATES TO REMAIN. REMOVE FABRIC AS REQUIRED TO ALLOW FOR CONSTRUCTION. PLACE BACK AT PROJECT COMPLETION.
- 7. REMOVE AND DISPOSE OF EXISTING POLE AND ASSOCIATED FOOTINGS.
- 8. REMOVE AND DISPOSE OF EXISTING POST HOLE FOOTINGS.
- 9. EXISTING BASKETBALL STANDARD TO REMAIN.
- 10. EXISTING COLUMNS TO BE PROTECTED THROUGHOUT CONSTRUCTION.
- 11. EXISTING DROP INLET TO REMAIN.
- 12. REMOVE AND DISPOSE OF EXISTING CONCRETE CURB TO EXTENT SHOWN.

GRAPHIC SCALE



THIS DRAWING MAY HAVE BEEN ENLARGED OR REDUCED.

A.P.N. 045-581-002
045-622-001

BENCHMARK NO. _____
ELEV. 6.45

HELD FOUND BCM IN WELL AT
INTERSECTION HALF MOON
BAY CIR. AND BIG ISLAND RD.

HORIZONTAL SCALE: AS NOTED

VERTICAL SCALE: N/A

JOB NO: 26-031

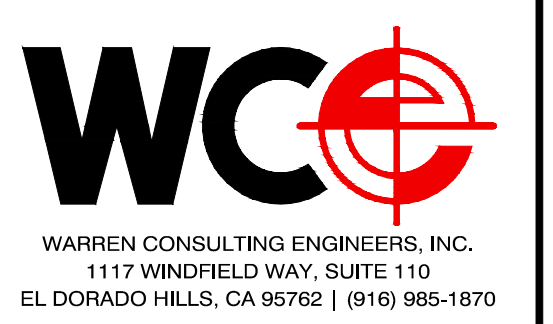
DESIGNED BY: AT

DRAWN BY: AT

CHECKED BY: AT

DATE: 03/26/2026

REVISIONS	NO.	DESCRIPTION	AGENCY APPROVAL	
			DATE	BY



DEMOLITION PLAN

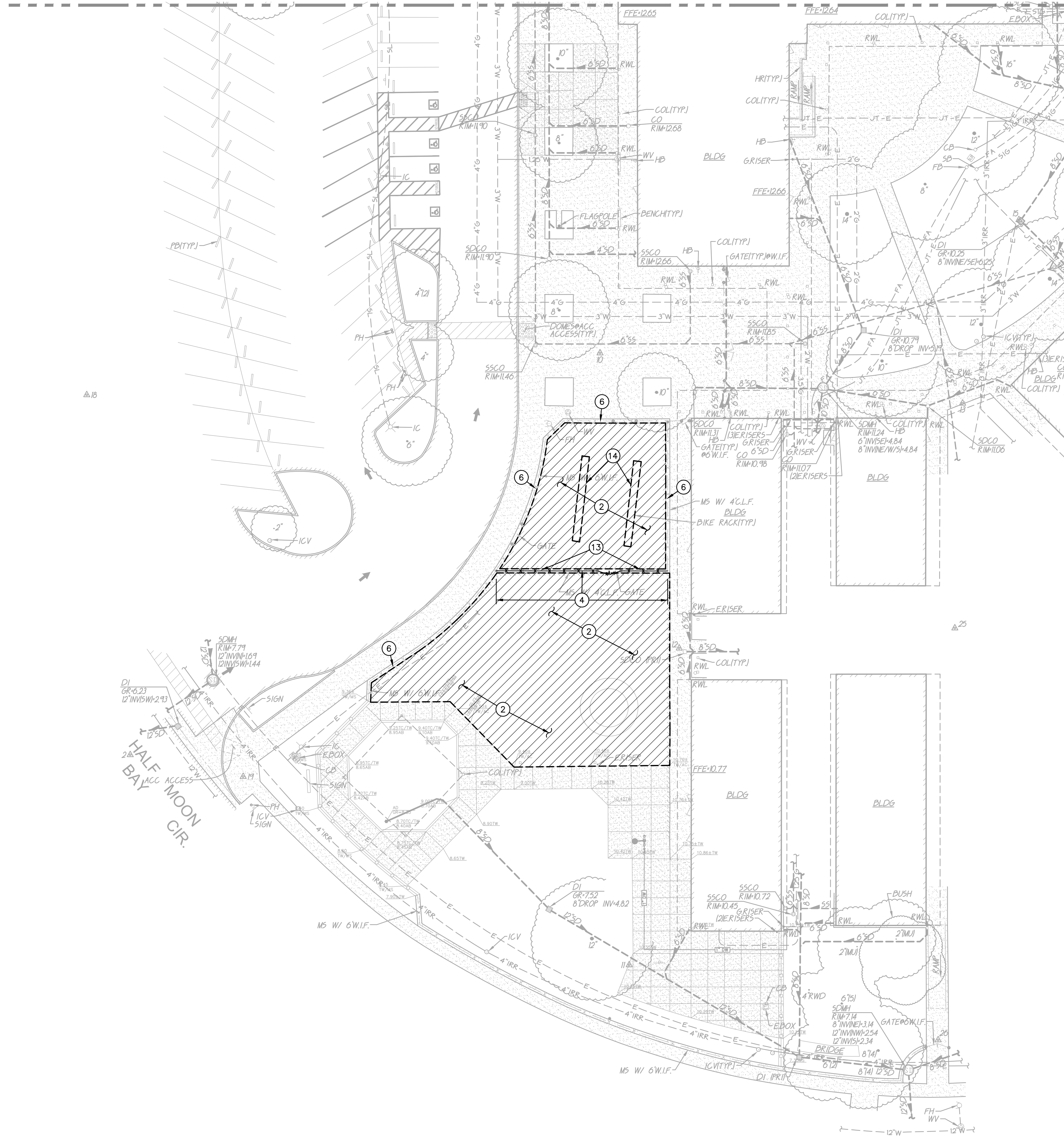
BRIDGEWAY ISLAND K-8 SCHOOL
HARDCOURT REPLACEMENT PROJECT

3255 HALF MOON BAY CIRCLE
WEST SACRAMENTO, CA 95691

TITLE: _____
PROJECT: _____
SHEET NO.

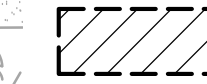
C1.1

MATCHLINE - SEE SHEET C1.1



DEMOLITION NOTES

2. REMOVE AND DISPOSE OF EXISTING ASPHALT PAVING AND AGGREGATE BASE. WHERE SAWCUT EDGES ARE SHOWN, THEY SHALL BE A NEAT STRAIGHT LINE. MAINTAIN CLEAN STRAIGHT CUT EDGE UNTIL NEW PAVING PLACED.
4. REMOVE AND DISPOSE OF EXISTING FENCE, GATES, POSTS AND ASSOCIATED FOOTINGS.
6. EXISTING FENCE AND GATES TO REMAIN. REMOVE FABRIC AS REQUIRED TO ALLOW FOR CONSTRUCTION. PLACE BACK AT PROJECT COMPLETION.
13. REMOVE AND DISPOSE OF EXISTING CONCRETE BAND.
14. REMOVE AND SALVAGE EXISTING BIKE RACKS. PLACE BACK AT PROJECT COMPLETION.



A.P.N. 045-581-002
045-622-001

BENCHMARK NO. _____
ELEV. 6.45

HELD FOUND BCM IN WELL AT
INTERSECTION HALF MOON
BAY CIR. AND BIG ISLAND RD.

HORIZONTAL SCALE: AS NOTED

VERTICAL SCALE: N/A

JOB NO: 26-031

DESIGNED BY: AT

DRAWN BY: AT

CHECKED BY: AT

DATE: 03/26/2026

REVISIONS NO.	DESCRIPTION	AGENCY APPROVAL	
		DATE	BY



TITLE: DEMOLITION PLAN

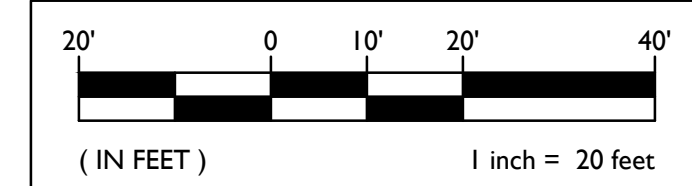
PROJECT: BRIDGEWAY ISLAND K-8 SCHOOL
HARDCOURT REPLACEMENT PROJECT

3955 HALF MOON BAY CIRCLE
WEST SACRAMENTO, CA 95691

SHEET NO.

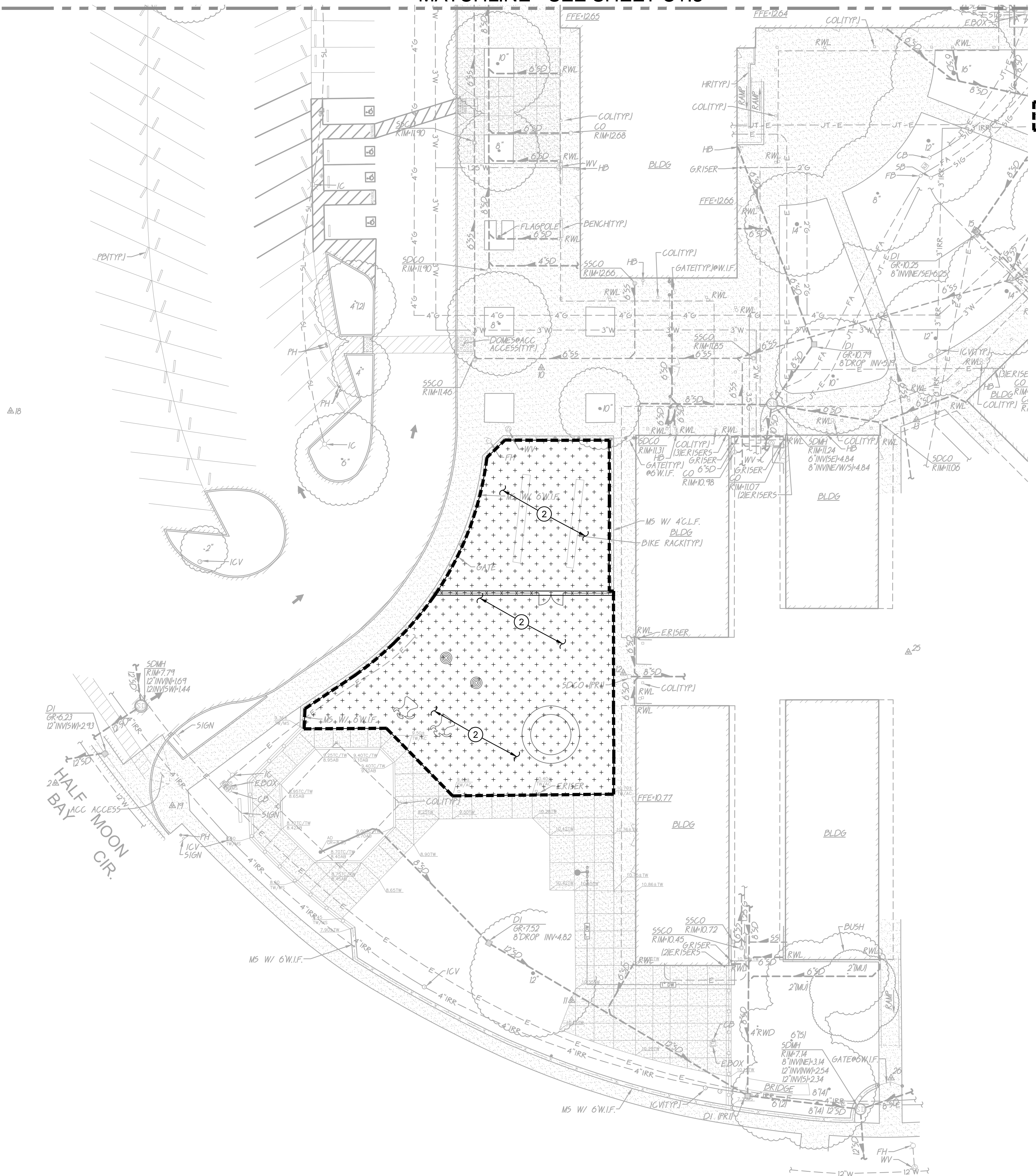
C1.2

GRAPHIC SCALE



THIS DRAWING MAY HAVE BEEN ENLARGED OR REDUCED.

MATCHLINE - SEE SHEET C1.3



NOTE: EXISTING SOIL REMOVAL SHOULD NOT UNDERMINE THE EXISTING FOOTINGS OF ADJACENT BUILDINGS, TYP.

SUBGRADE PREPARATION

② FOLLOWING SITE CLEARING, STRIPPING AND DEMOLITION ACTIVITIES:

FOR AREAS TO BE CUT TO ACHIEVE SUBGRADE, EXCAVATE DOWN TO PROPOSED SUBGRADE ELEVATION. SCARIFY THE EXISTING SOILS TO A MINIMUM DEPTH OF 12 INCHES, MOISTURE CONDITIONED TO AT LEAST THE OPTIMUM MOISTURE CONTENT AND COMPACTED TO 90 PERCENT RELATIVE COMPACTION.

FOR AREAS TO BE FILLED TO ACHIEVE SUBGRADE, SCARIFY EXPOSED SOILS TO A MINIMUM DEPTH OF 12 INCHES AND UNIFORMLY MOISTURE CONDITION TO AT LEAST THE OPTIMUM AND COMPACT TO 90 PERCENT RELATIVE COMPACTION. PLACE FILL MATERIAL IN LEVEL LAYERS NOT EXCEEDING 6 INCHES IN COMPACTED THICKNESS TO MEET PROPOSED SUBGRADE ELEVATION.

SUBGRADE REQUIREMENTS SHALL EXTEND AT LEAST 2 FEET BEYOND EDGE OF PROPOSED ASPHALT AND CONCRETE PAVING WHEN NOT ABUTTING EXISTING PAVING.

GENERAL NOTES

- IN THE EVENT THAT ANY UNUSUAL CONDITIONS NOT COVERED BY THE GEOTECHNICAL INVESTIGATION REPORT OR ARE ENCOUNTERED DURING GRADING OPERATIONS THE GEOTECHNICAL ENGINEER AND THE ARCHITECT SHALL BE IMMEDIATELY NOTIFIED FOR DIRECTIONS.
- NO BURNING SHALL BE PERMITTED.
- THE TYPES, LOCATIONS, SIZES AND/OR DEPTHS OF EXISTING UNDERGROUND UTILITIES AS SHOWN ON THESE PLAN WERE OBTAINED FROM SOURCES OF VARYING RELIABILITY. THE CONTRACTOR IS CAUTIONED THAT ONLY ACTUAL EXCAVATION WILL REVEAL THE TYPES, EXTENT, SIZES, LOCATIONS, AND DEPTHS OF SUCH UNDERGROUND UTILITIES. HOWEVER, WARREN CONSULTING ENGINEERS CAN ASSUME NO RESPONSIBILITY FOR THE COMPLETENESS OR ACCURACY OF ITS DELINEATION OF SUCH UNDERGROUND UTILITIES, NOR FOR THE EXISTENCE OF OTHER BURIED OBJECTS OR UTILITIES WHICH MAY BE ENCOUNTERED BUT WHICH ARE NOT SHOWN ON THESE DRAWINGS. THE CONTRACTOR OR ANY SUBCONTRACTOR FOR THIS CONTRACT SHALL NOTIFY THE DISTRICT TWO (2) WORKING DAYS IN ADVANCE OF PERFORMING ANY EXCAVATION WORK IN ORDER TO VERIFY TO THE GREATEST EXTENT POSSIBLE THE EXISTING UTILITY LINES, CONFLICTS AND PROPOSED UTILITY CONNECTION POINTS.

A.P.N.	045-581-002 045-622-001
BENCHMARK NO.	ELEV. 6.45
HELD FOUND BCM IN WELL AT INTERSECTION HALF MOON BAY CIR. AND BIG ISLAND RD.	
HORIZONTAL SCALE:	AS NOTED
VERTICAL SCALE:	N/A
JOB NO:	26-031
DESIGNED BY:	AT
DRAWN BY:	AT
CHECKED BY:	AT
DATE:	03/26/2026

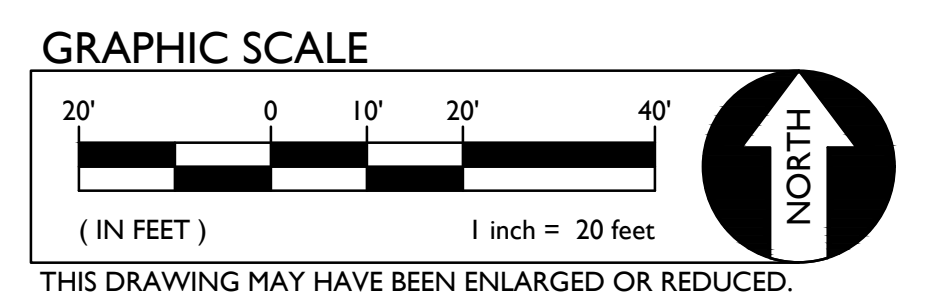
REVISIONS NO.	DESCRIPTION	AGENCY APPROVAL	
		DATE	BY



ENGINEERED FILL PLAN

**BRIDGEWAY ISLAND K-8 SCHOOL
HARDCOURT REPLACEMENT PROJECT**

3955 HALF MOON BAY CIRCLE
WEST SACRAMENTO, CA 95691



TITLE: ENGINEERED FILL PLAN

SHEET NO. **C1.4**

MATCHLINE - SEE SHEET C2.1



GRADING NOTES

- MATCH EXISTING GRADE/ELEVATION.
- CONSTRUCT FLUSH CONCRETE CURB PER 2 C5.1

FENCING NOTES

- PLACE 4 FT GREEN COATED (TO MATCH EX. FENCE CLOR) VINYL CHAIN LINK FENCE AND POSTS. POSTS AND RAILS TO BE POWDER COATED GREEN. FABRIC TO BE 9 GA. 2" MESH SEE SPECIFICATION SECTION 323113 AND DETAIL PROVIDED. 1 C5.2
- CONSTRUCT 8FT WIDE, DOUBLE LEAF, CHAIN LINK MAINTENANCE GATE PER 4 C5.2

A.P.N. 045-581-002
045-622-001

BENCHMARK NO. _____
ELEV. 6.45

HELD FOUND BCM IN WELL AT
INTERSECTION HALF MOON
BAY CIR. AND BIG ISLAND RD.

HORIZONTAL SCALE: AS NOTED

VERTICAL SCALE: N/A

JOB NO: 26-031

DESIGNED BY: AT

DRAWN BY: AT

CHECKED BY: AT

DATE: 03/26/2026

AGENCY APPROVAL	DATE
	BY
REVISIONS	DATE
	DESCRIPTION
NO.	

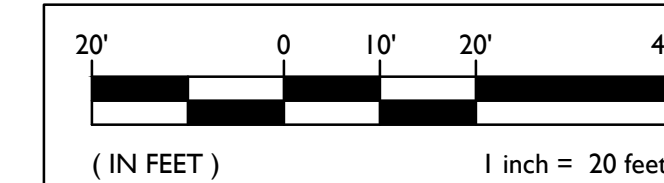


TITLE: GRADING, DRAINAGE AND FENCING PLAN
PROJECT: BRIDGEWAY ISLAND K-8 SCHOOL
HARDCOURT REPLACEMENT PROJECT
3955 HALF MOON BAY CIRCLE
WEST SACRAMENTO, CA 95691

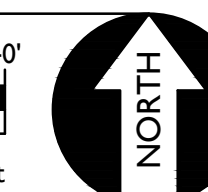
SHEET NO.

C2.2

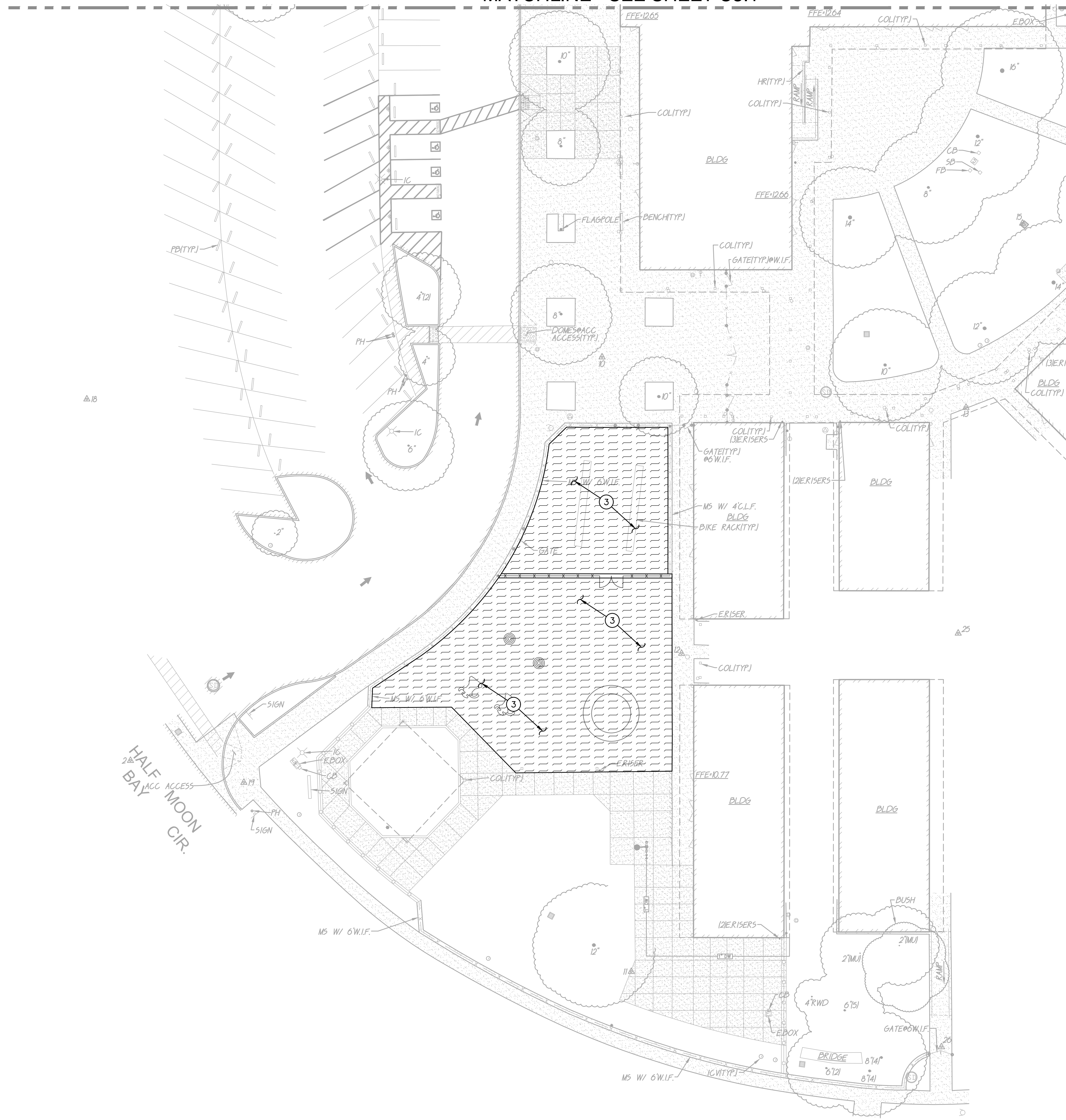
GRAPHIC SCALE



THIS DRAWING MAY HAVE BEEN ENLARGED OR REDUCED.



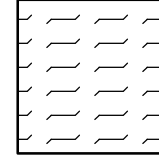
MATCHLINE - SEE SHEET C3.1



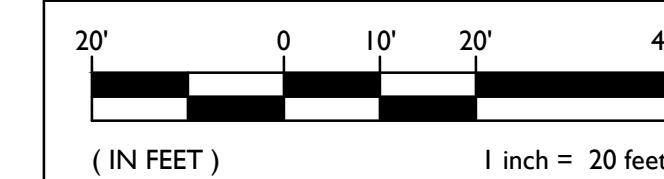
PAVING GENERAL NOTES:

- AGGREGATE BASE SHALL MEET CALTRANS SPECIFICATIONS FOR CLASS II AGGREGATE BASE.
- ALL AGGREGATE BASE SHALL BE MOISTURE CONDITIONED TO, OR SLIGHTLY ABOVE, OPTIMUM MOISTURE CONTENT AND COMPACTED TO 95% RELATIVE COMPACTION.
- RECYCLED ASPHALT MAY BE USED AS CONCRETE AND ASPHALT BASE MATERIAL PROVIDED IT MEETS CALTRANS SPECIFICATIONS FOR CLASS II AB.
- PAVEMENT SUBGRADE PREPARATION, I.E. SCARIFICATION, MOISTURE CONDITIONING, AND COMPACTION SHALL BE PERFORMED AFTER;
 - POT HOLLING ALL EXISTING UTILITIES.
 - THE INSTALLATION OF UNDERGROUND UTILITIES AND TRENCHES BACKFILLED IN ACCORDANCE WITH THESE PLANS.
- ALL AREAS DISTURBED BY GRADING, DEMOLITION, OR CONSTRUCTION ACCESS, WHICH ARE NOT SURFACED BY THIS SET OF PLANS, OR LANDSCAPE PLANS, SHALL BE RESTORED.
- REFER TO GRADING PLANS FOR CURBS, CURB GUTTERS, VALLEY GUTTERS, AND OTHER CONCRETE STRUCTURES AND PAVING FEATURES NOT SPECIFICALLY NOTED ON THIS PLAN.
- ADJUST TO FINISH GRADE ALL BOXES, FRAMES, COVERS SLEEVES, POST HOLES, GRATES, ETC. FOUND IN NEW ASPHALT OR CONCRETE PAVING AREAS, WHICH ARE NOT NOTED FOR REMOVAL. REPLACE PER PLAN.
- PROPOSED PAVEMENT/FLATWORK SHALL SLOPE AWAY FROM BUILDING AT 1.0% MIN.

PAVING LEGEND

-  ③ TYPE 3 PAVING
PLACE 3" AC OVER 12" CLASS II AB ON A TENSAR BX1100 GEOGRID. PLACE TWO (2) APPLICATIONS OF SEAL COAT.

GRAPHIC SCALE



THIS DRAWING MAY HAVE BEEN ENLARGED OR REDUCED.

A.P.N. 045-581-002
045-622-001

BENCHMARK NO. _____
ELEV. 6.45

HELD FOUND BCM IN WELL AT INTERSECTION HALF MOON BAY CIR. AND BIG ISLAND RD.

HORIZONTAL SCALE: AS NOTED

VERTICAL SCALE: N/A

JOB NO: 26-031

DESIGNED BY: AT

DRAWN BY: AT

CHECKED BY: AT

DATE: 03/26/2026

REVISIONS NO.	DESCRIPTION	AGENCY APPROVAL	
		DATE	BY



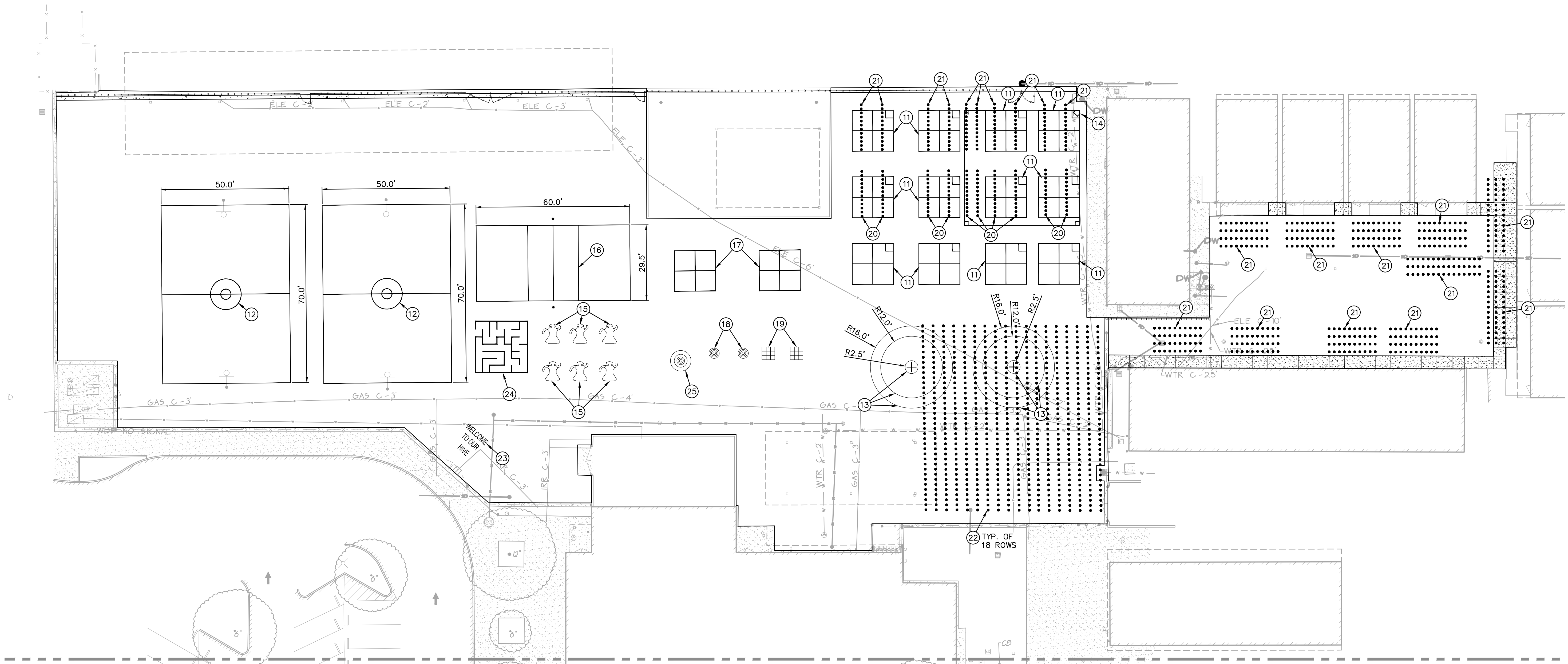
WARREN CONSULTING ENGINEERS, INC.
1117 WINDFIELD WAY, SUITE 110
EL DORADO HILLS, CA 95762 | (916) 985-1870

TITLE: PAVING PLAN
PROJECT: BRIDGEWAY ISLAND K-8 SCHOOL
HARDCOURT REPLACEMENT PROJECT
3255 HALF MOON BAY CIRCLE
WEST SACRAMENTO, CA 95691

SHEET NO.

C3.2

FILENAME: \\26-031\CIVIL\DWG\26-031-C41-C42.DWG PLOTTED: Thursday, March 12, 2026

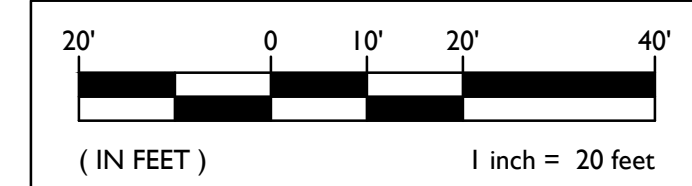


MATCHLINE - SEE SHEET C4.2

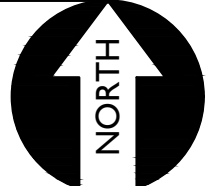
○ PLAYCOURT STRIPING NOTES

11. PLACE FOURSQUARE COURT STRIPING PER
12. PAINT BASKETBALL COURT STRIPING PER
13. PAINT 2" WIDE WHITE STRIPE.
14. PAINT KICKBALL COURT STRIPING PER
15. PAINT ROBOT HOPSCOTCH STRIPING PER
16. PLACE VOLLEYBALL COURT STRIPING AND POLES PER
17. PAINT FOURSQUARE COURT STRIPING WITH COLORED SQUARES PER
18. PAINT CIRCULAR TARGET STRIPING #1 PER
19. PAINT 5'X5' SQUARE CHECKER PATTERN PER
20. PAINT 6" DIAMETER BLUE DOTS.
21. PAINT 6" DIAMETER YELLOW DOTS.
22. PAINT YELLOW STARS.
23. PAINT "WELCOME TO OUR HIVE" IN 24" TALL WHITE LETTERS.
24. PAINT MAZE WITH 2" WIDE YELLOW STRIPE.
25. PAINT CIRCULAR TARGET STRIPING #1 PER

GRAPHIC SCALE



THIS DRAWING MAY HAVE BEEN ENLARGED OR REDUCED.



A.P.N.	045-581-002 045-622-001
BENCHMARK NO.	
ELEV.	6.45
HELD FOUND BCM IN WELL AT INTERSECTION HALF MOON BAY CIR. AND BIG ISLAND RD.	
HORIZONTAL SCALE:	AS NOTED
VERTICAL SCALE:	N/A
JOB NO:	26-031
DESIGNED BY:	AT
DRAWN BY:	AT
CHECKED BY:	AT
DATE:	03/26/2026

REVISIONS NO.	DESCRIPTION	AGENCY APPROVAL	
		BY	DATE



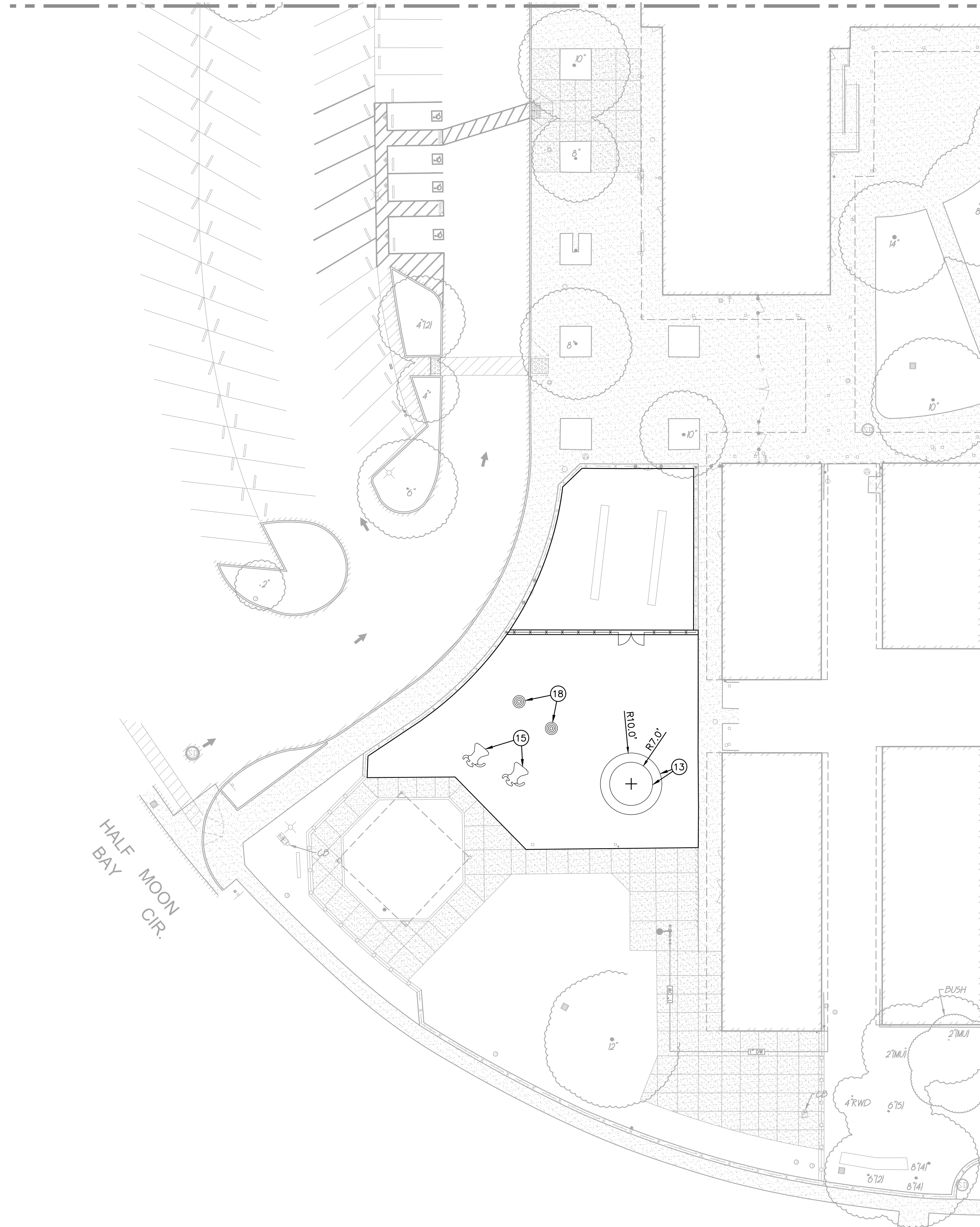
TITLE: STRIPING PLAN

PROJECT: BRIDGEWAY ISLAND K-8 SCHOOL
HARDCOURT REPLACEMENT PROJECT

3255 HALF MOON BAY CIRCLE
WEST SACRAMENTO, CA 95691

SHEET NO. **C4.1**

MATCHLINE - SEE SHEET C4.1



○ PLAYCOURT STRIPING NOTES

- 13. PAINT 2" WIDE WHITE STRIPE.
- 15. PAINT ROBOT HOPSCOTCH STRIPING PER 7
C5.3
- 18. PAINT CIRCULAR TARGET STRIPING #1 PER 9
C5.3

A.P.N. 045-581-002
045-622-001

BENCHMARK NO. _____
ELEV. 6.45

HELD FOUND BCM IN WELL AT
INTERSECTION HALF MOON
BAY CIR. AND BIG ISLAND RD.

HORIZONTAL SCALE: AS NOTED

VERTICAL SCALE: N/A

JOB NO: 26-031

DESIGNED BY: AT

DRAWN BY: AT

CHECKED BY: AT

DATE: 03/26/2026

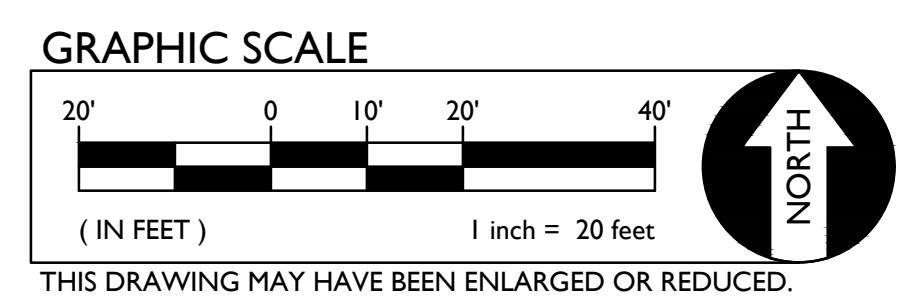
REVISIONS NO.	DESCRIPTION	AGENCY APPROVAL	
		BY	DATE



TITLE: STRIPING PLAN

PROJECT: BRIDGEWAY ISLAND K-8 SCHOOL
HARDCOURT REPLACEMENT PROJECT

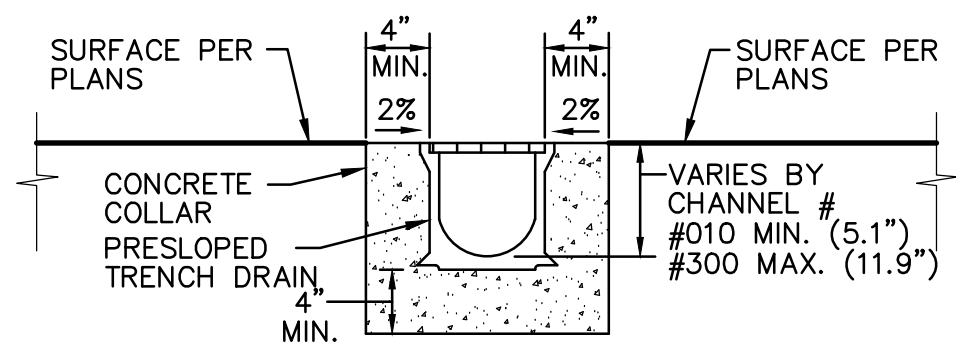
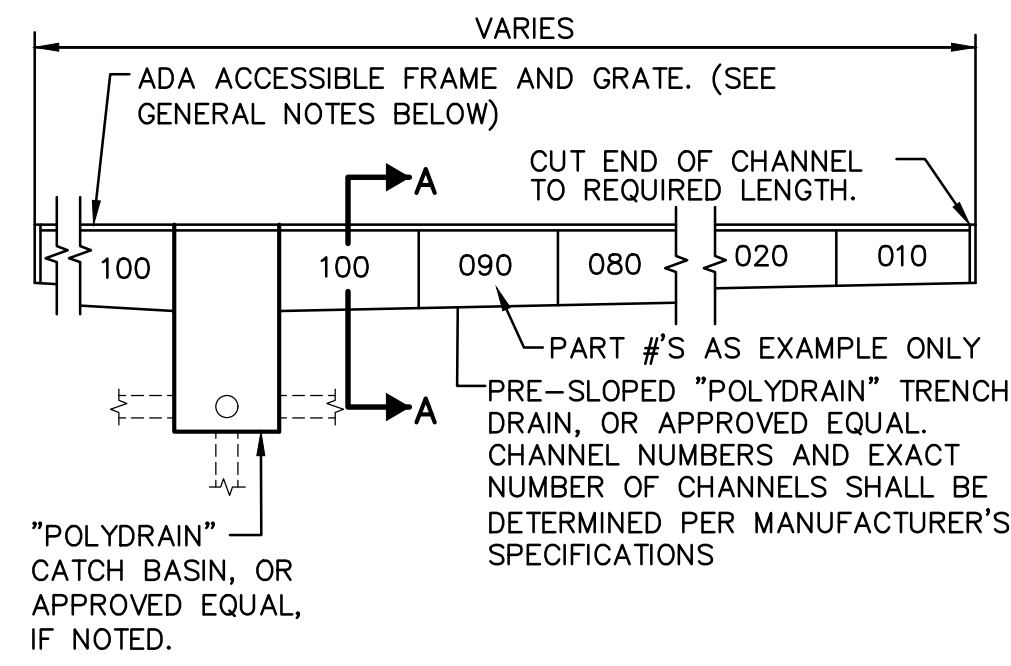
3255 HALF MOON BAY CIRCLE
WEST SACRAMENTO, CA 95691



FILENAME: \\26-031\CIVIL\DWG\26-031-C41-C42.DWG PLOTTED: Thursday, March 12, 2026

SHEET NO.

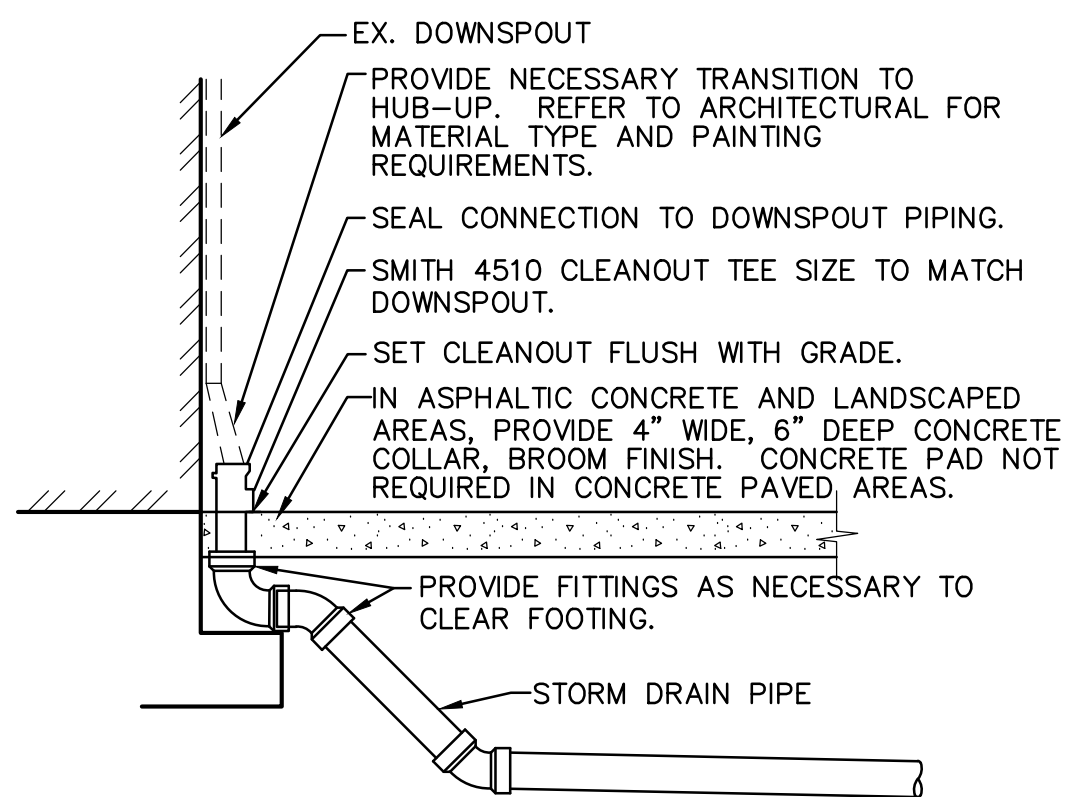
C4.2



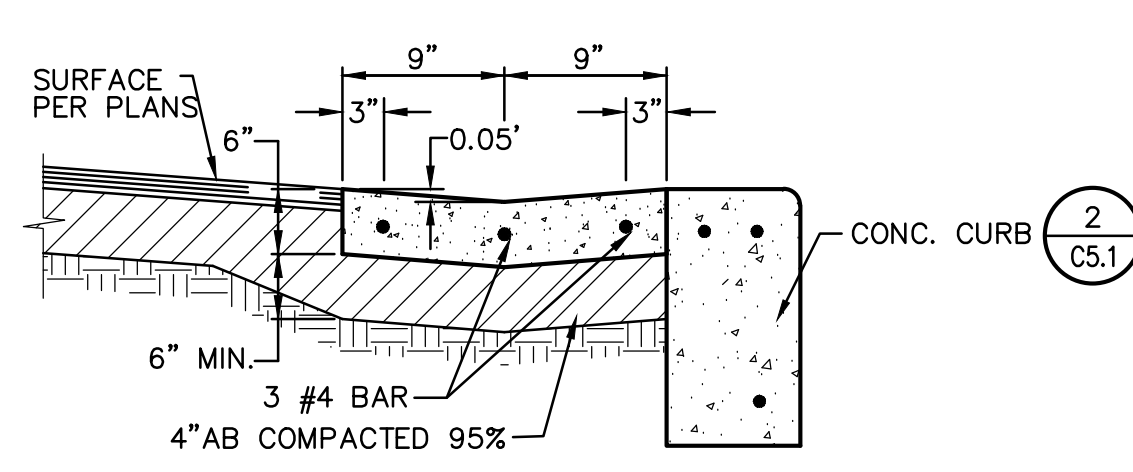
SECTION A-A

- GENERAL NOTES:**
1. GRATE SHALL ADA ACCESSIBLE, POLYDRAIN MODEL 2410 OR APPROVED EQUAL. IF PLACED IN FIRE LANE OR AREA DESIGNATED FOR VEHICLE TRAFFIC PROVIDE POLYDRAIN MODEL 2506.
 2. IF TRENCH DRAIN IS PLACED IN FIRE LANE OR AREA DESIGNATED FOR VEHICLE TRAFFIC PROVIDE GALVANIZED STEEL "OVERLAY RAILS" AS SUPPLIED BY POLYDRAIN, OR APPROVED EQUAL.
 3. CONTRACTOR SHALL FURNISH AND INSTALL A MODEL 2811B LOCKING DEVICE, OR APPROVED EQUAL, FOR ALL TRENCH DRAIN GRATES.
 4. CONTRACTOR SHALL FURNISH AND INSTALL A TRASH BUCKET, MODEL 2900, IN ALL TRENCH DRAIN CATCH BASINS.
 5. CONTRACTOR SHALL PURCHASE AND FURNISH THE MAINTINANCE/OPERATIONS DEPARTMENT OF THE SCHOOL WITH 2 MODEL 2231 TRENCH DRAIN SHOVEL HEADS, WITH STANDARD WOOD, OR COMPOSITE HANDLES.
 6. ALL MITERED JOINTS SHALL BE SEALED WITH POLYDRAIN "POLYSEAL" CAULKING OR APPROVED EQUAL.

6 TRENCH DRAIN DETAIL
C5.1 NO SCALE

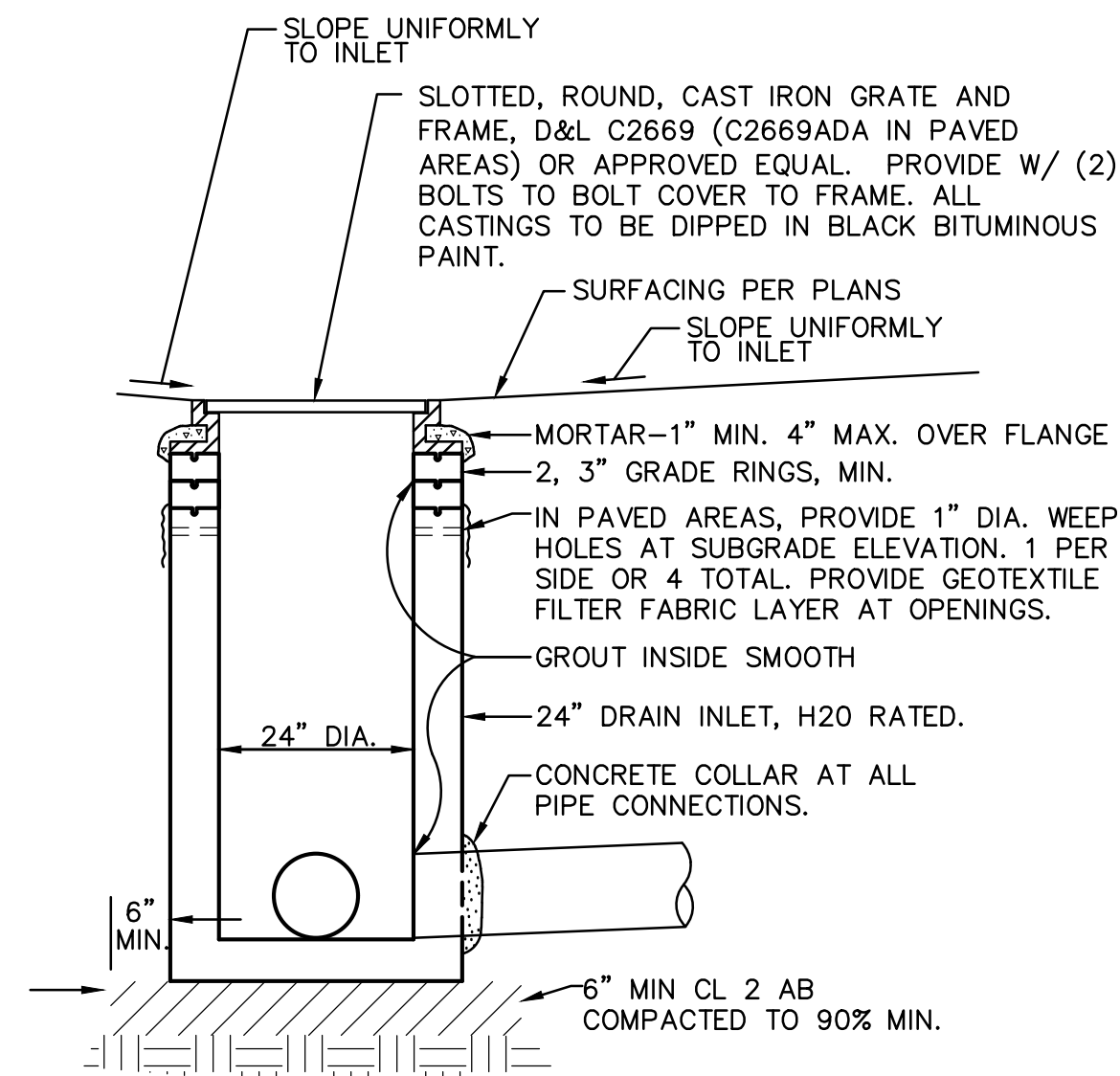


7 DOWNSPOUT CONNECTION
C5.1 NO SCALE

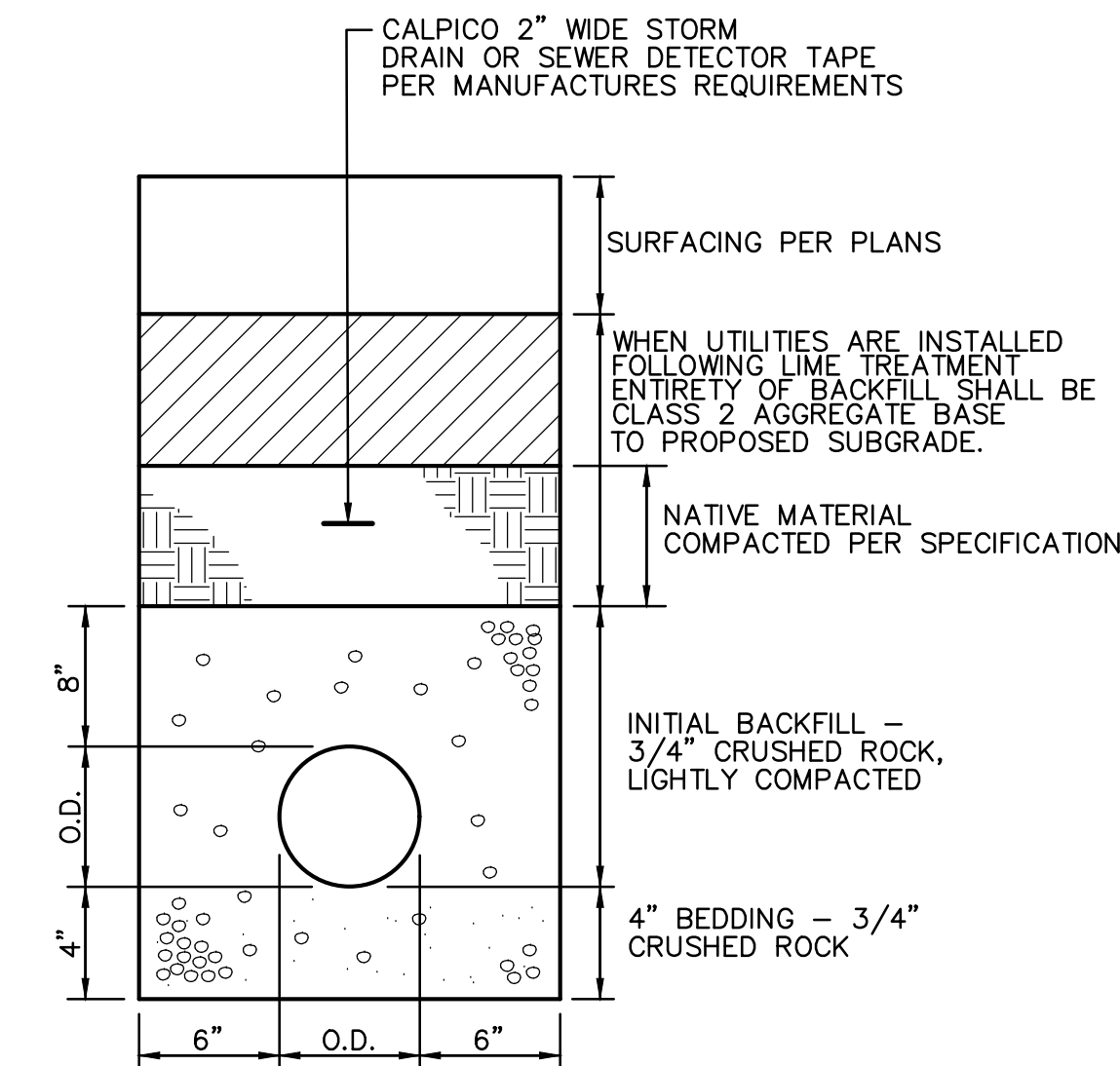


- NOTES:**
1. PROVIDE FELT EXPANSION JOINTS (E.J.) AT 60 FEET O.C. SEAL E.J. WITH APPROVED JOINT SEALANT. PROVIDE CONTROL JOINTS AT 10 FEET O.C.
 2. AT E.J. USE 1/2"x24" SMOOTH DOWELS, ALIGN WITH REBAR, GREASE 1/2 THE LENGTH BEFORE CONCRETE PLACEMENT.

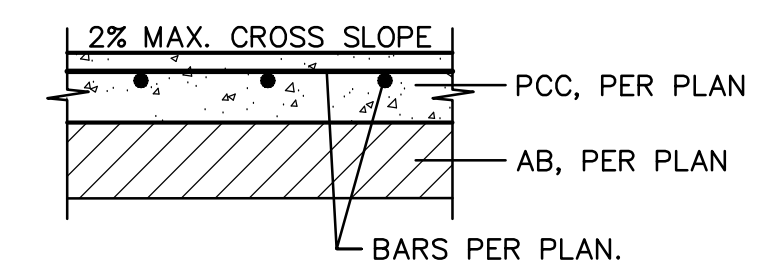
3 CONCRETE VALLEY GUTTER
C5.1 NO SCALE



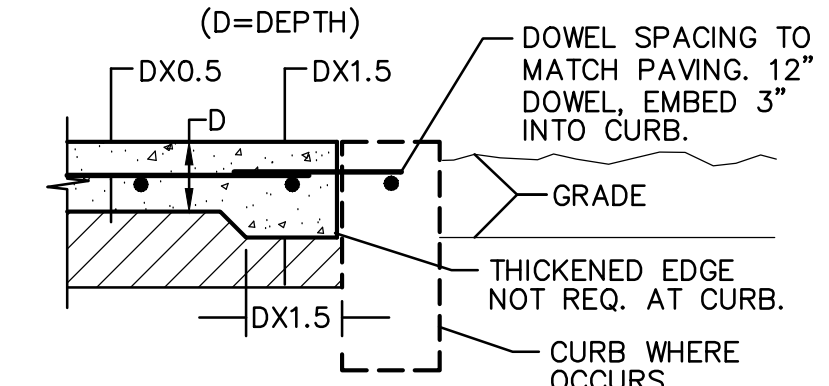
4 DROP INLET
C5.1 NO SCALE



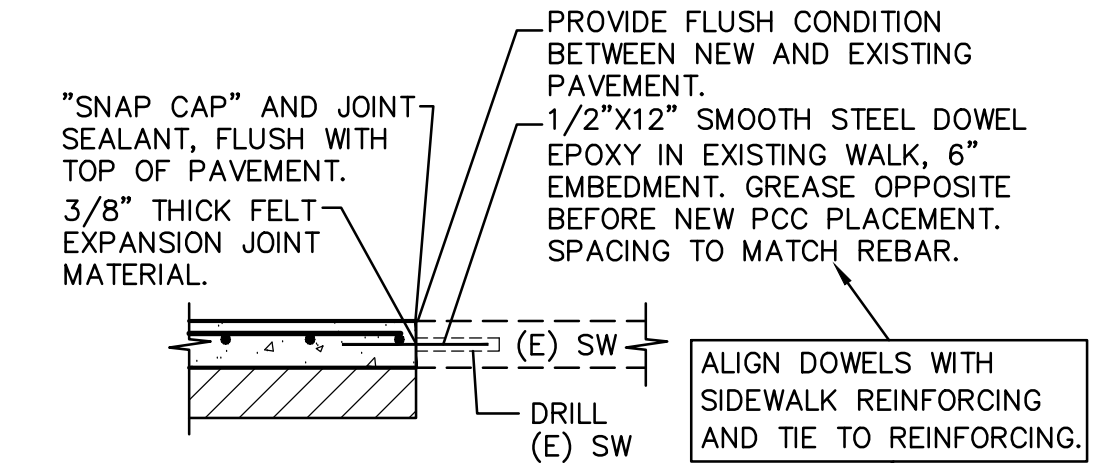
5 STORM DRAIN TRENCH
C5.1 NO SCALE



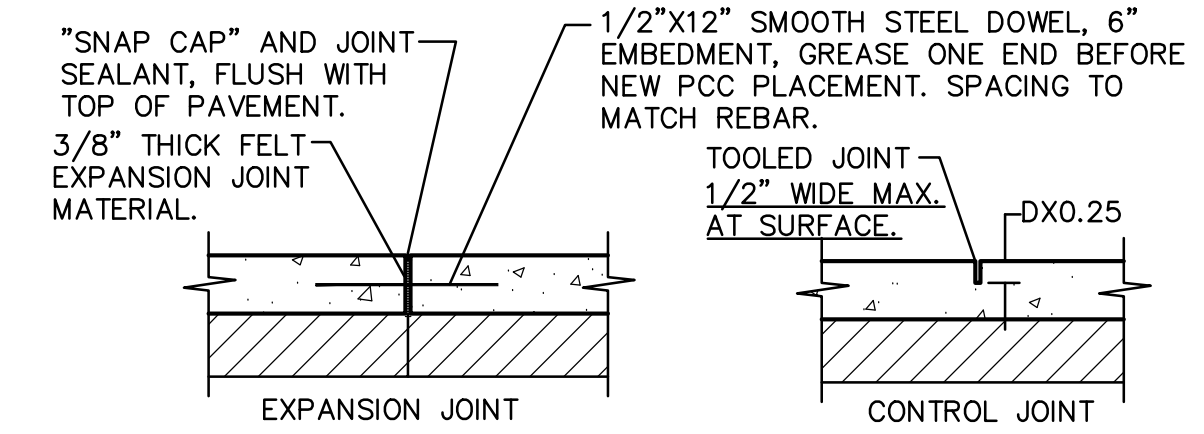
TYPICAL SECTION



TYPICAL THICKENED EDGE



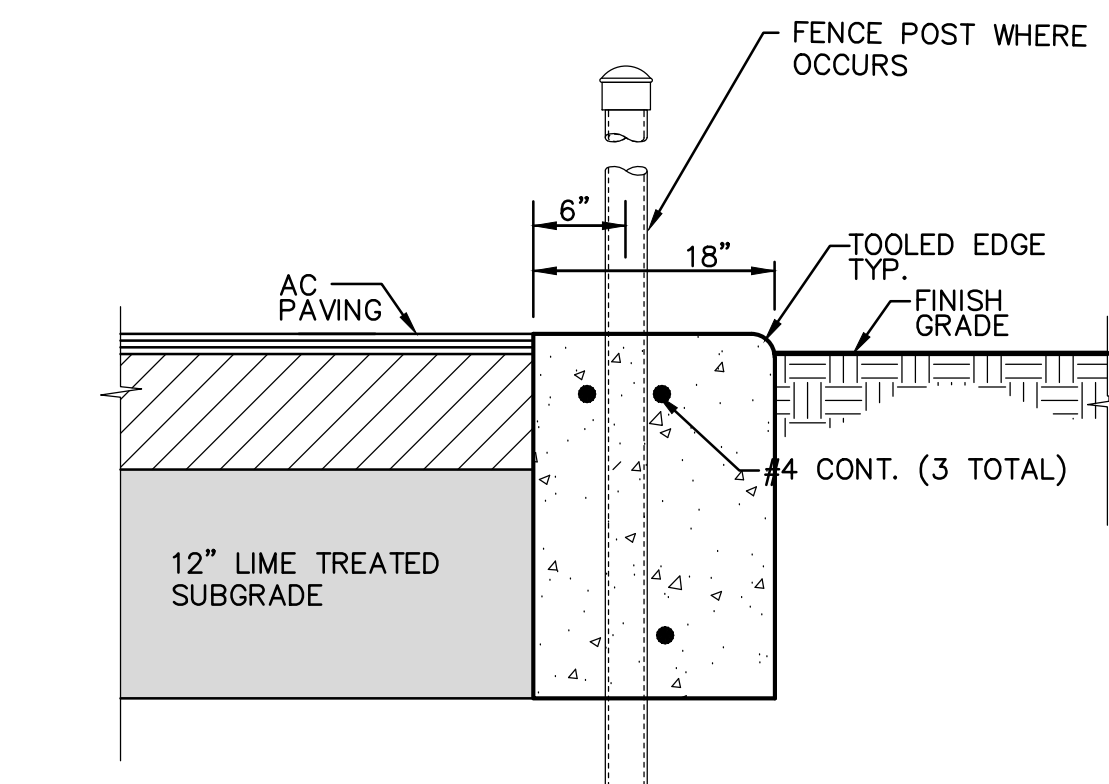
CONNECTION TO (E) CONCRETE



TYPICAL JOINTS

- NOTES:**
1. PROVIDE FELT EXPANSION JOINTS AT 20 FEET O.C. MAX. SEE PLAN FOR LAYOUT.
 2. PROVIDE CONTROL JOINTS AT 10 FEET O.C. MAX. SEE PLAN FOR LAYOUT.
 3. EXPANSION OR CONTROL JOINTS SHALL NOT EXCEED 1/2" IN SURFACE WIDTH.

1 CONCRETE SIDEWALK
C5.1 NO SCALE



- NOTES:**
1. PROVIDE FELT EXPANSION JOINTS (E.J.) AT 60 FEET O.C. PROVIDE CONTROL JOINTS AT 10 FEET O.C., EXCEPT WHEN PLACING ADJACENT TO CONCRETE WALKS THE EXPANSION JOINTS SHALL ALIGN WITH THE EXPANSION JOINTS SHOWN FOR THE CONCRETE WALKS.
 2. AT E.J. USE 1/2"x24" SMOOTH DOWELS, ALIGN WITH REBAR, GREASE 1/2 THE LENGTH BEFORE CONCRETE PLACEMENT.

2 12" WIDE CONCRETE CURB
C5.1 NO SCALE

A.P.N.	045-581-002 045-622-001
BENCHMARK NO.	ELEV. 6.45
HELD FOUND BCM IN WELL AT INTERSECTION HALF MOON BAY CIR. AND BIG ISLAND RD.	
HORIZONTAL SCALE:	AS NOTED
VERTICAL SCALE:	N/A
JOB NO:	26-031
DESIGNED BY:	AT
DRAWN BY:	AT
CHECKED BY:	AT
DATE:	03/26/2026

REVISIONS	NO.	DESCRIPTION	DATE	BY



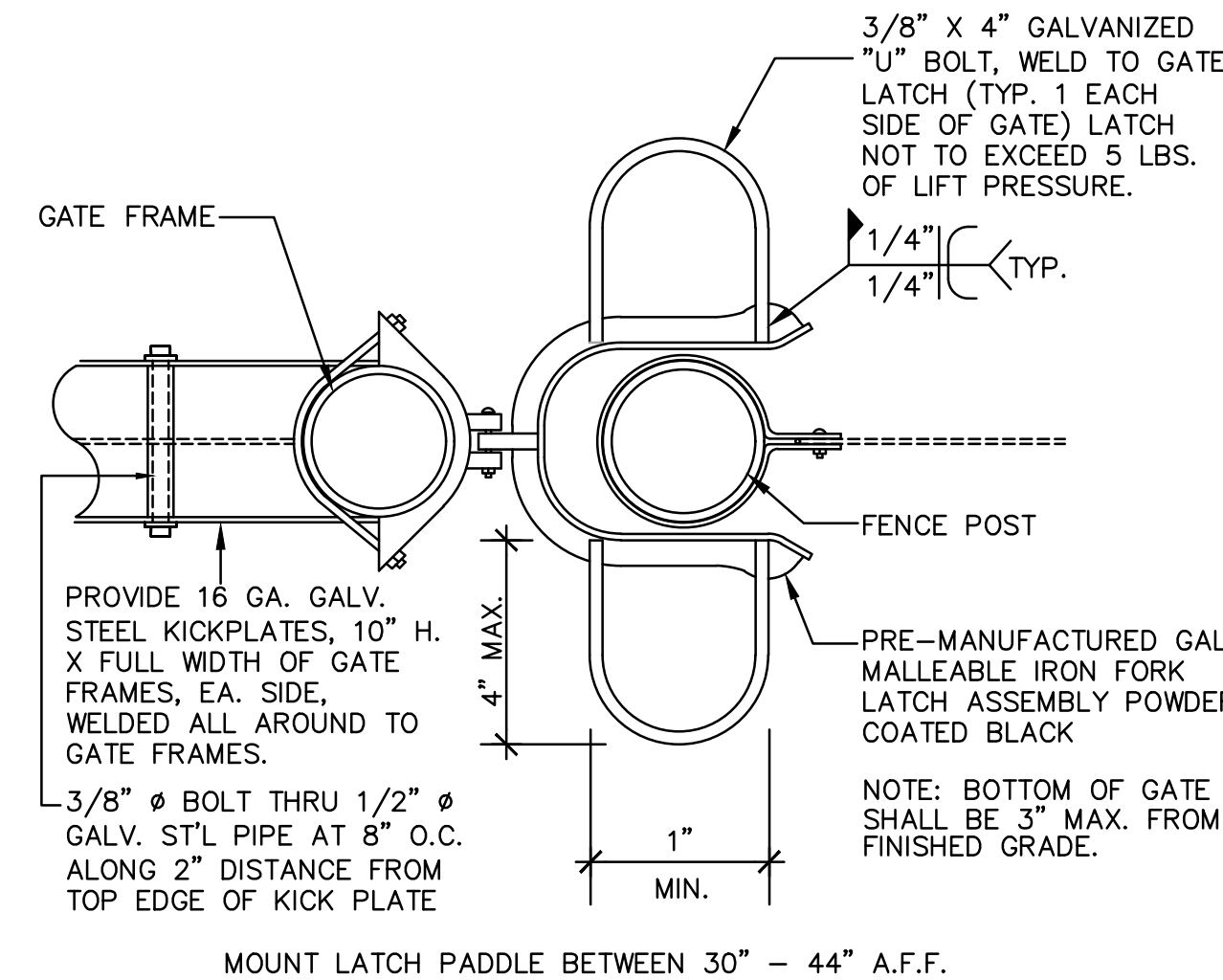
DETAILS

PROJECT: BRIDGEWAY ISLAND K-8 SCHOOL
HARDCOURT REPLACEMENT PROJECT

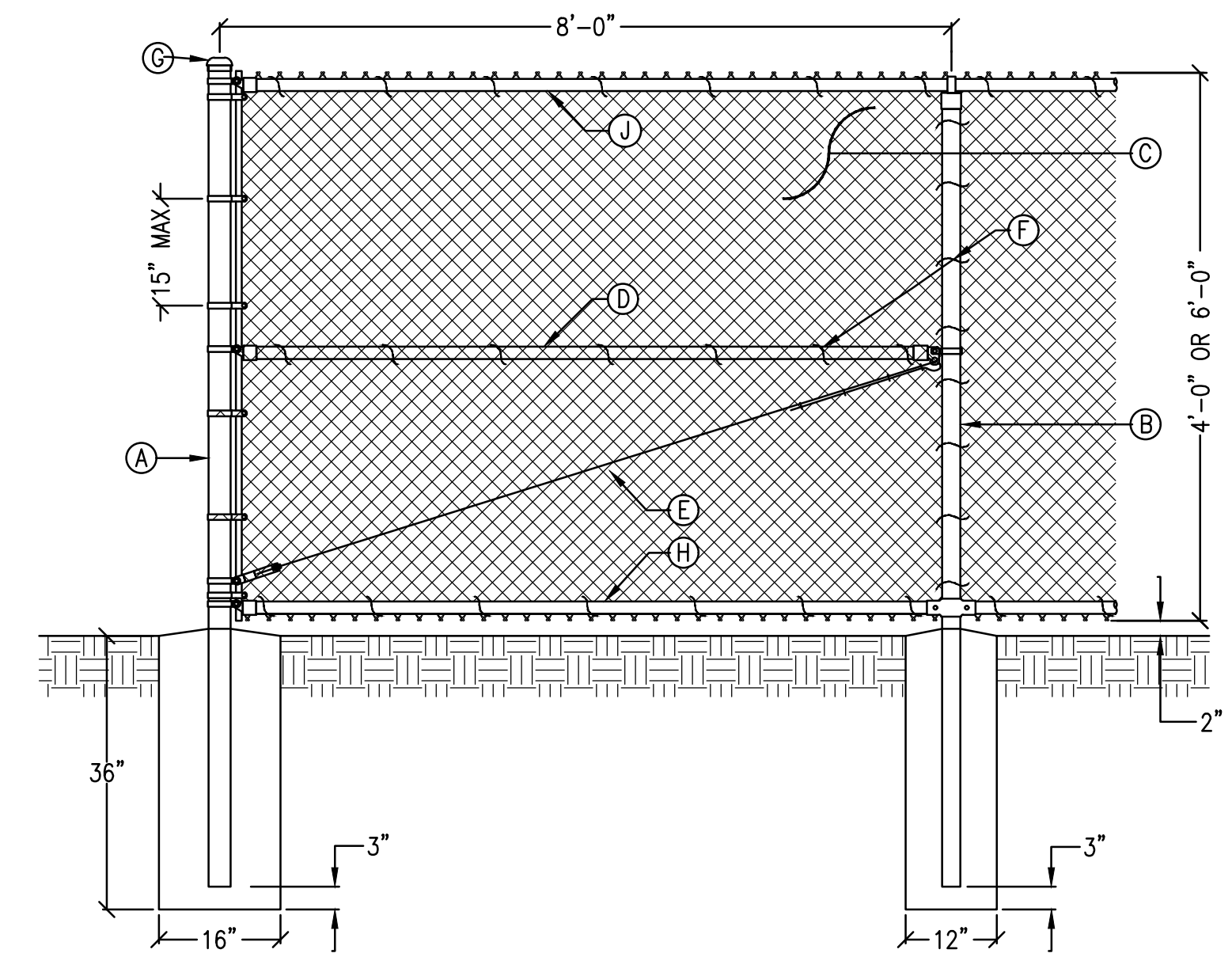
3255 HALF MOON BAY CIRCLE
WEST SACRAMENTO, CA 95691

SHEET NO.

C5.1

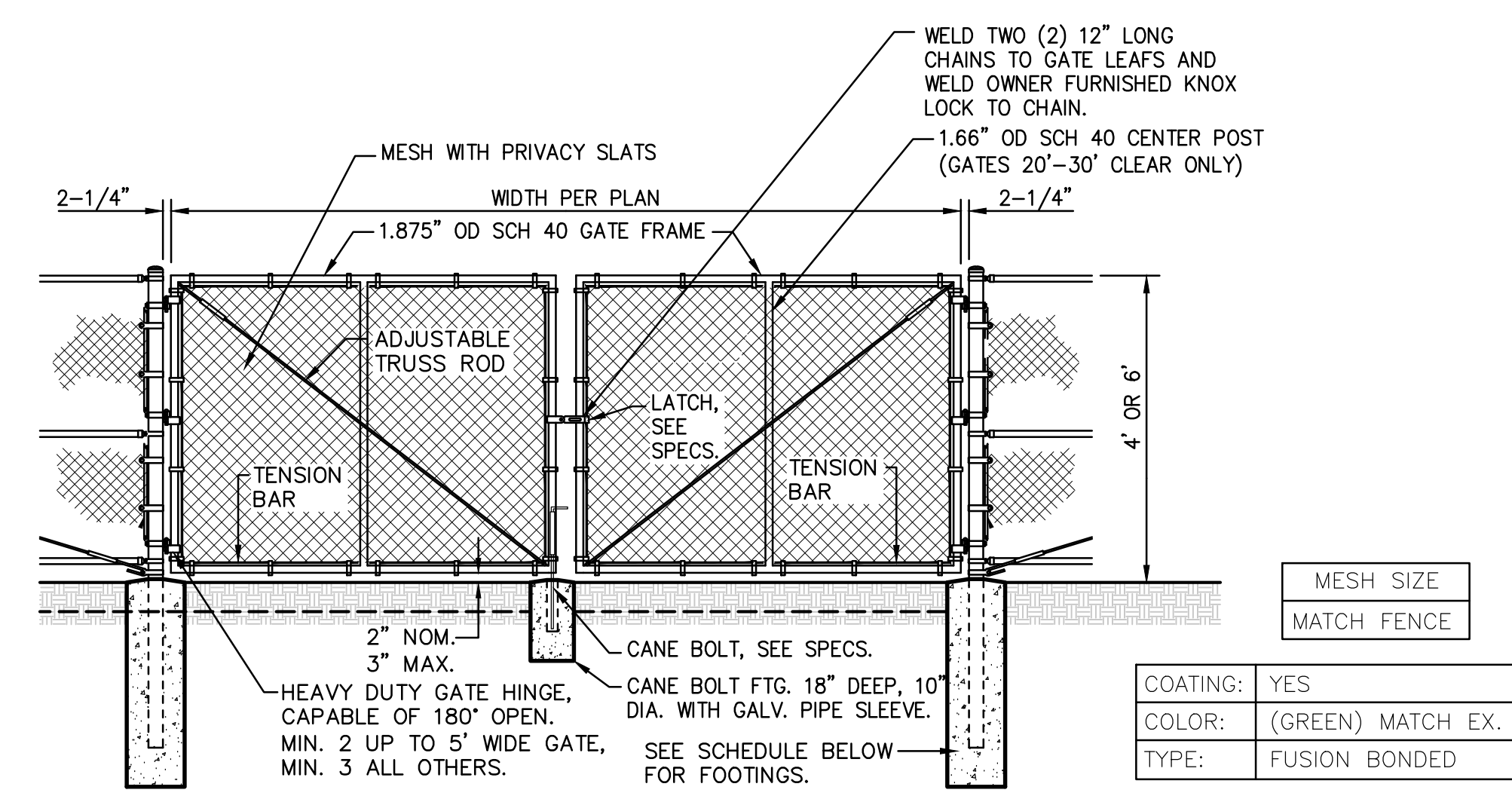


3 GATE LATCH
C5.2 NO SCALE



- (A) - 2-7/8" OD SCH. 40 GALV. STEEL POST, POWDER COATED TO MATCH EX.
- (B) - 2-3/8" OD SCH. 40 GALV. STEEL POST, POWDER COATED TO MATCH EX.
- (C) - 9 GA. CHAIN LINK FENCE. VINYL TO MATCH EX COLOR.
- (D) - 1-5/8" OD SCH. 40 GALV. STEEL RAIL, POWDER COATED. REQ/D. AT TERMINAL AND CORNER POSTS.
- (E) - 3/8" OD ADJUSTABLE INDUSTRIAL GALV. TRUSS ROD WITH TRUSS ROD TIGHTENER. 18" MINIMUM TAIL AND SECURE WITH 9 GA. GALV. STEEL HOG RINGS..
- (F) - 9 GA. GALV. STEEL, BLACK VINYL COATED. TIES AT 15" MAX. OC HORIZONTAL AND 12" MAX. VERTICAL CLOSED EYE ENDS.
- (G) - ALL CAPS AND FITTINGS HEAVY INDUSTRIAL GALV. GRADE. POWDER COATED TO MATCH EX.
- (H) - 1-5/8" OD SCH. 40 GALV. STEEL BOTTOM RAIL, POWDER COATED TO MATCH EX.
- (J) - 1-5/8" OD SCH. 40 GALV. STEEL TOP RAIL, POWDER COATED TO MATCH EX.

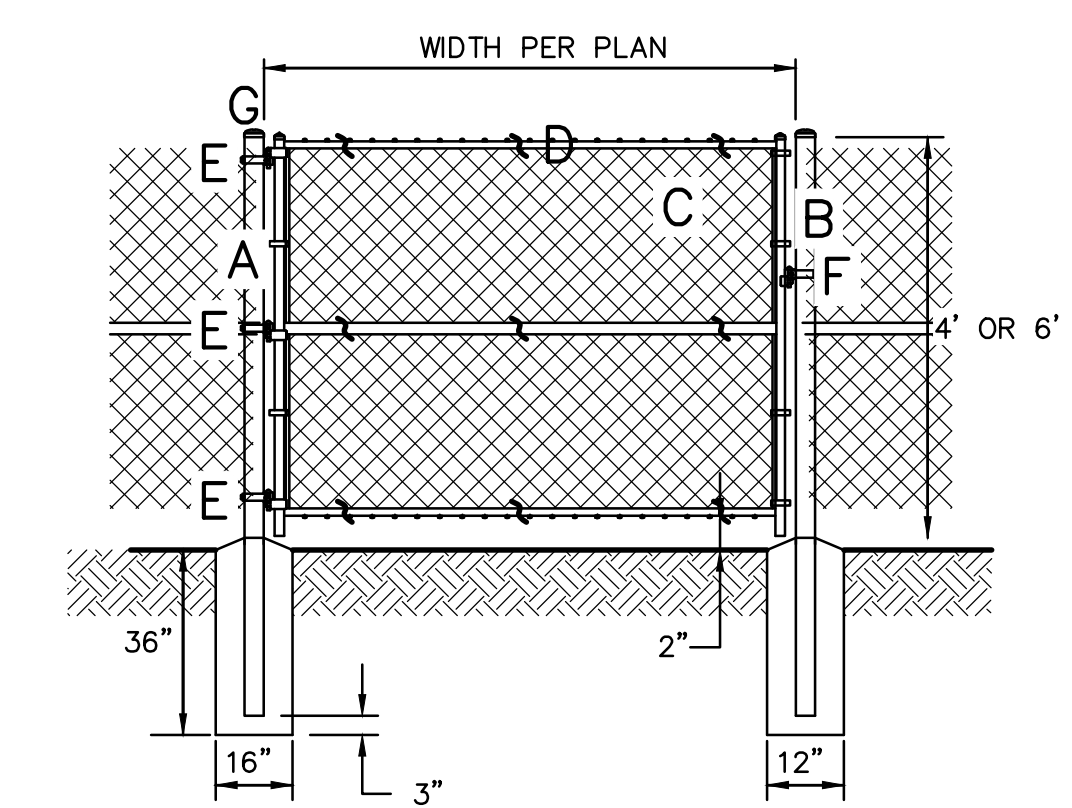
1 6' TALL CHAIN LINK FENCING
C5.2 NO SCALE



FENCES TO 9' HEIGHT

GATE POST SCHEDULE				
POST DIA.	GATE LEAF	POST EMBED	DEPTH	DIA. (MIN)
4.0" OD	2'-4'	30"	36"	16"
4.0" OD	4.1'-9'	36"	42"	18"
4.0" OD	9.1'-12.5'	42"	48"	18"
6.0" OD	12.6'-18'	42"	48"	24"

4 TYPICAL CHAIN LINK MAINTENANCE / VEHICULAR GATE
C5.2 NON-ACCESSIBLE VEHICULAR GATES ONLY NO SCALE



- A - 4" OD SCH. 40 GALV. STEEL POST POWDER COATED BLACK
- B - 2 7/8" OD SCH. 40 GALV. STEEL POST POWDER COATED BLACK
- C - MESH PER PLAN (MATCH ADJACENT FENCING)
- D - 1 5/8" OD SCH. 40 WELDED GALV. STEEL FRAME POWDER COATED BLACK
- E - 180 DEGREE PRESSED STEEL INDUSTRIAL HINGE.
- F - MALLEABLE IRON (LOCKABLE) GATE FORK LATCH, SEE 3/C6.2.
- G - ALL CAPS AND FITTINGS HEAVY INDUSTRIAL GALV. GRADE, POWDER COATED BLACK

2 CHAIN LINK MAINTENANCE GATE
C5.2 NO SCALE

A.P.N. 045-581-002
045-622-001

BENCHMARK NO. _____
ELEV. 6.45

HELD FOUND BCM IN WELL AT INTERSECTION HALF MOON BAY CIR. AND BIG ISLAND RD.

HORIZONTAL SCALE: AS NOTED

VERTICAL SCALE: N/A

JOB NO: 26-031

DESIGNED BY: AT

DRAWN BY: AT

CHECKED BY: AT

DATE: 03/26/2026

REVISIONS	NO.	DESCRIPTION	AGENCY APPROVAL	
			DATE	BY



TITLE: DETAILS

PROJECT: BRIDGEWAY ISLAND K-8 SCHOOL
HARDCOURT REPLACEMENT PROJECT

3255 HALF MOON BAY CIRCLE
WEST SACRAMENTO, CA 95691

SHEET NO. **C5.2**

