

**NOTICE OF PLANNED CLOSURE OF PUBLIC PROPERTY/ENFORCEMENT OF CAMPING ORDINANCES TO
LEGAL SERVICES OF NORTHERN CALIFORNIA ("LSNC")**

This notice serves as the required notice of the City's planned closure of public property / enforcement of its Anti-Camping Ordinances and Regulations pursuant to Paragraph 10(c) of *Warren, et al. v. City of Chico, et al.* Settlement Agreement.

Location of Public Property 1: Teichert Ponds, as indicated on the attached Teichert Ponds Map.

The City has determined there are fourteen (14) people camping at this location. Of those people, eight (8) have been assessed during a prior enforcement operation. Those eight (8) persons should not be included in the count because they have already refused shelter or have been exited from a shelter due to behavioral problems. Further, there are eighteen (18) abandoned or unoccupied campsites at this location.

Location of Public Property 2: Silver Dollar Way, as indicated on the attached Silver Dollar Way Map.

The City has determined there is no persons camping at this location. However, there are five (5) abandoned or unoccupied campsites at this location.

Location of Public Property 3: The bike path between East Park Avenue and East 20th Street, as indicated on the attached East Park to East 20th Bike Path Map.

The City has determined there is one (1) person camping at this location. That person has not been assessed during a prior enforcement operation. Further, there are zero (0) abandoned or unoccupied campsites at this location.

The City will provide the "7-DAY NOTICE OF CLOSURE OF PUBLIC PROPERTY/ENFORCEMENT OF CAMPING ORDINANCES" to all Homeless Persons at this location on September 9, 2025. *Further, the City requests LSNC meet with the Target Team to verify counts and confirm the location of enforcement prior to September 9, 2025. If LSNC disagrees with the City's count and contends there are too many people camping at these locations than there are beds available, the City proposes beginning enforcement operations and will stop enforcing on persons at this location who cannot enter shelter because one of the shelters has become fully occupied.*

The City has determined there are thirteen (13) available Pallet Shelters. Five (5) of those Pallet Shelters are available ADA units.

The City has determined there are twenty-nine (29) available beds at the Torres Community Shelter. Eighteen (18) of those beds are in the men's dorm, eleven (11) are in the women's dorm, and zero (0) are in the overflow dorm.

You may confirm the above shelter availability by contacting:

Pallet Shelter Contact:

Name: Amber Abney-Bass

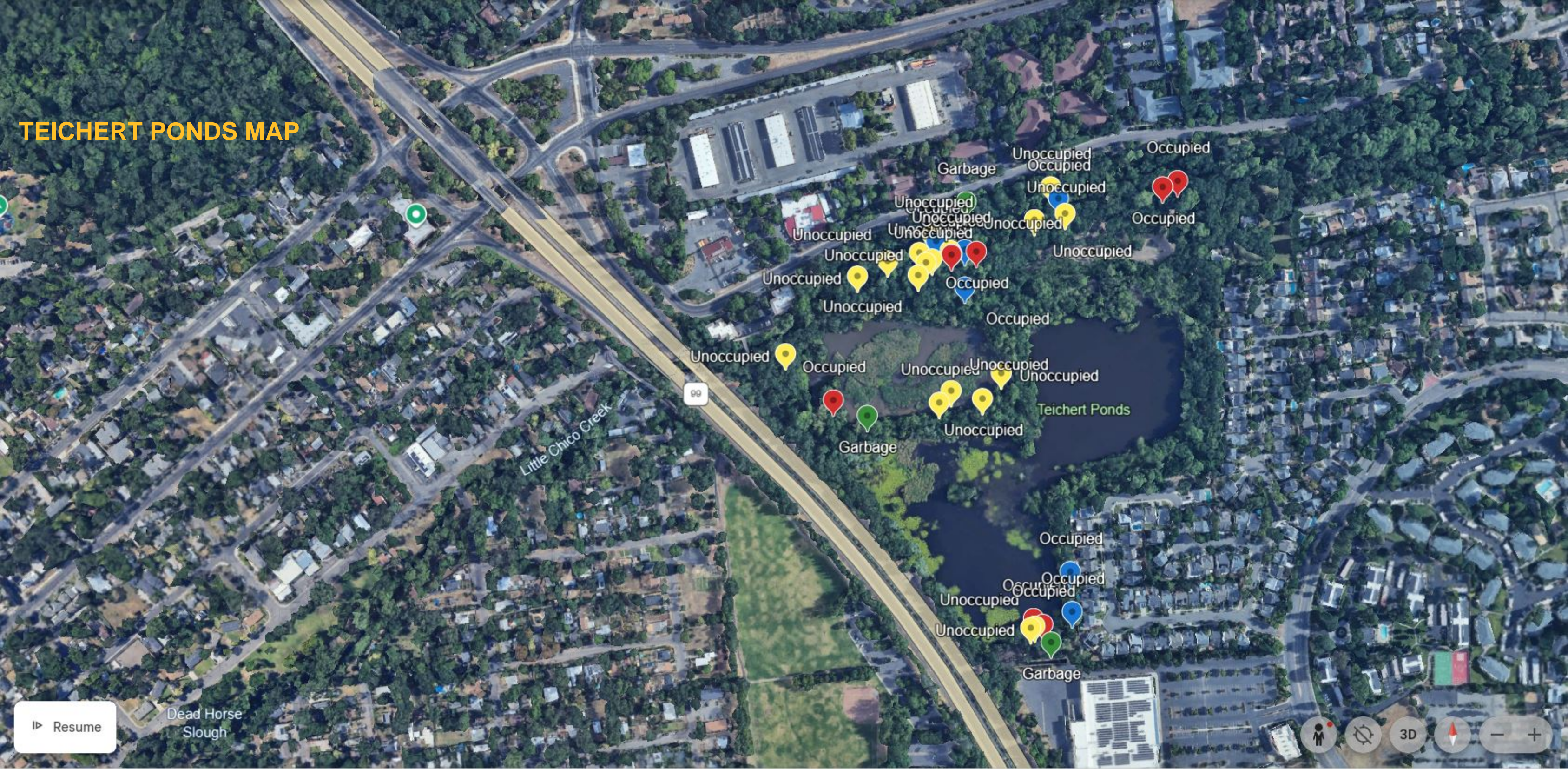
Phone: 530-345-2640; **Email:** amber@jesuscenter.org

Torres Shelter Contact:

Name: Jacque Lewkowicz

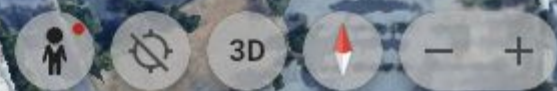
Phone: 530-891-9048; **Email:** jacque@truenorthbutte.org

TEICHERT PONDS MAP



▶ Resume

Dead Horse
Slough



SILVER DOLLAR WAY MAP



Unoccupied
Unoccupied
Unoccupied
Unoccupied

California Water
Service, Chico

Silver Dollar RC Raceway

Crough Ditch

▶ Resume

Map navigation controls including a person icon, a compass icon, a 3D button, and zoom in/out buttons.

EAST PARK TO EAST 20TH BIKE PATH MAP

Rotary Park

aya

California Water
Service, Chico

Crough Ditch

99

Silver Dollar Speedway

Occupied

99

WaterSprites
Swim School

Comanche
Creek
Greenway

▶ Resume

Athletic Horizons

