



Willows Unified School District

Expanded Learning Opportunities Program (ELOP)

Proposed Strategic Investments & Encumbrances

SCHOOL BOARD REPORT

Program Purpose



ELOP investments expand student access to:

- Transportation & enrichment
- STEM & career exploration
- Digital media & technology
- Safe learning environments



Supports after-school, summer, and intersession programming year-round.

Total Proposed Investment

\$634,000

Grand Total

Across all five investment categories

180

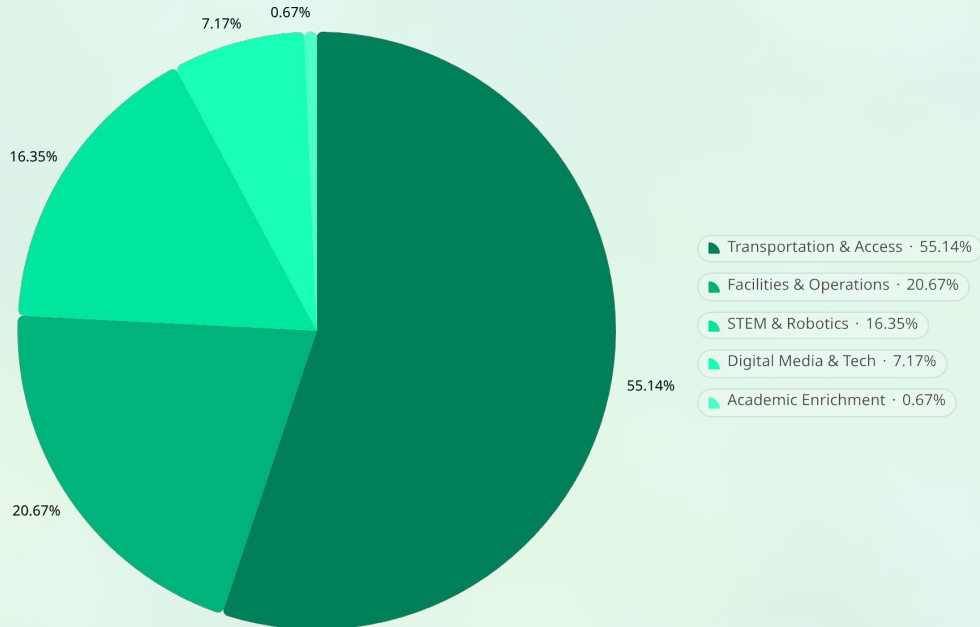
After-School Days

20

Summer Program Days

12

Intersession Days



Student Transportation & Access

\$346,800

3 Passenger Vans

\$240,000 — field trips, enrichment, community partnerships

1 Pickup Truck

\$75,000 — operational support

Shade Structure +

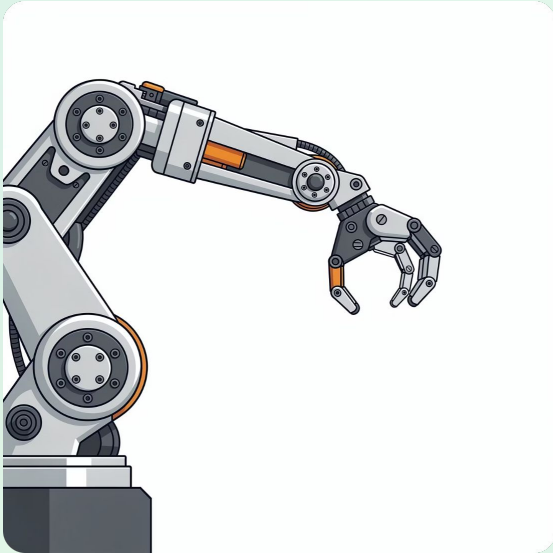
Safety — shade, seat modifications, booster seats

Transportation is the **largest barrier** to student participation in expanded learning.



STEM, Robotics & Engineering

\$110,00



Hands-on learning for TK–8 students:

- 3D Printers & accessories — \$11,000
- LEGO Computer & Science Systems — \$30,000
- Robotics Classroom Sets — \$15,000
- Brainstorm & NextWave STEM/STEAM — \$24,000
- Solar Power & Coding Kits — \$10,500
- Botzees Robotics Kits — \$2,500



Builds coding, engineering design, and computational thinking skills.

Digital Media & Technology

\$45,100



Photography

Equipment & accessories —

\$17,000

Supports journalism, digital storytelling, media production, and technology literacy.



Drones

5 drones + accessories —

\$3,100



Chromebook

Cart — \$25,000

Academic Enrichment &

\$4,210 Curriculum



**Music
Enrichment**

10 kits — \$1,000



Science Club

10 kits — \$260



Green Energy

10 kits — \$1,250



**Home
Engineering**

10 kits — \$1,000



Coding Kits

10 kits — \$1,200

Facilities & Operational Support

\$130,000

Pool Operations

\$35,000

Electricity / A/C

\$30,000

Custodial Services

\$20,000

Facilities & Grounds

\$25,000

Water & Restrooms

\$12,000

Technology Infrastructure

\$10,000

ELOP Alignment



These investments directly support ELOP core objectives:

- **Increase participation & remove barriers**
- **Expand STEM & career exploration**
- **Promote creativity, innovation & leadership**
- **Build sustainable long-term infrastructure**

Summary: Proposed ELOP Investments

Category	Total
Student Transportation & Access	\$346,800
Facilities & Operational Support	\$130,000
STEM, Robotics & Engineering	\$102,818
Digital Media & Technology	\$45,100
Academic Enrichment & Curriculum	\$4,210
Grand Total	\$628,928

- ✔ Extending learning beyond the traditional school day — for every student, every season.