

Orinda Union School District 2024/25 Demographics Update

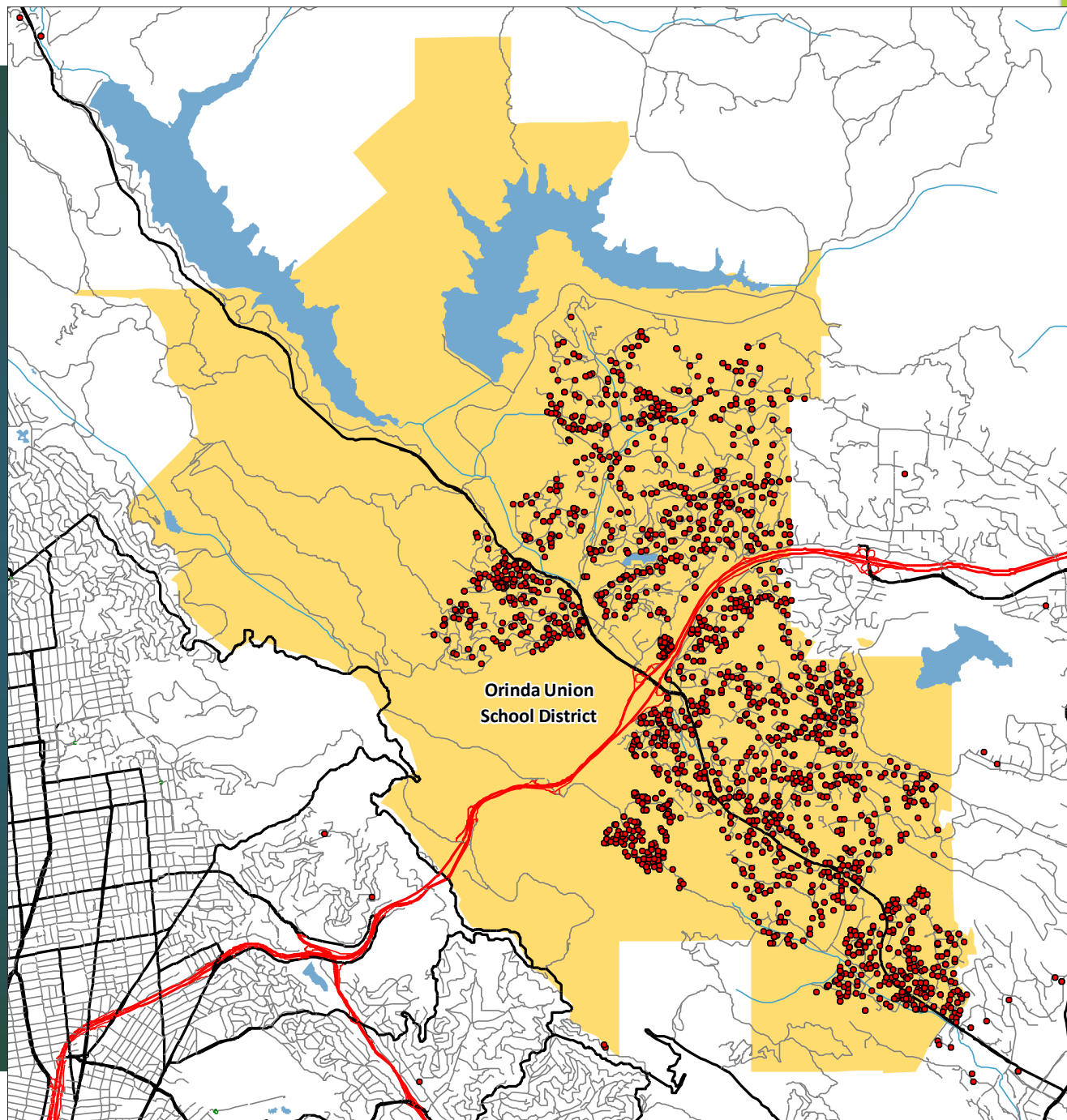


Nov 18, 2024

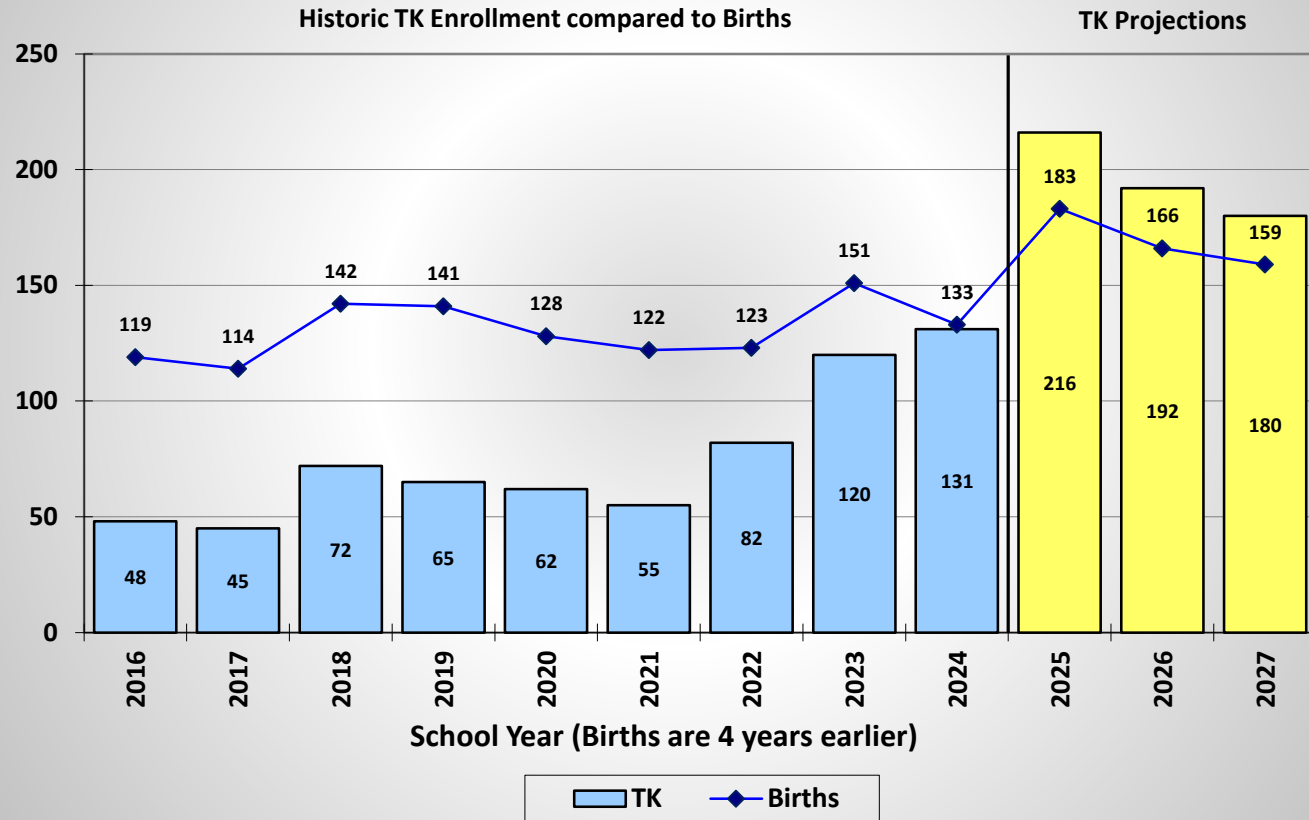


District Map & Student Distribution

- ▶ District information is input into a GIS program for analysis.
- ▶ Students are “geocoded” based on their current residential address.



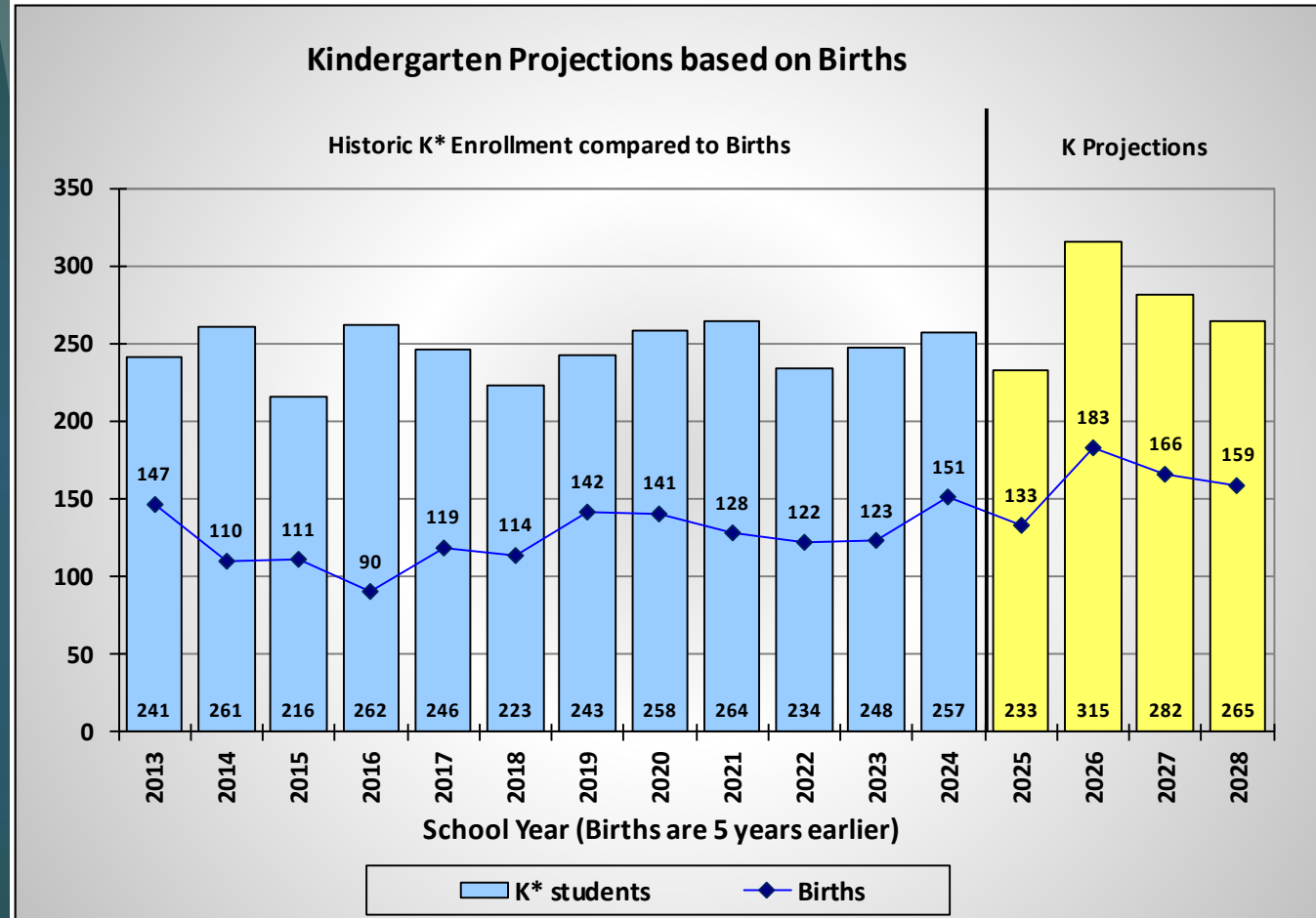
TK Projections based on Births



Transitional Kindergarten Projections

Birth Data

► This chart shows correlation between births in the District area and the number of kindergarten students attending schools five (5) years later.

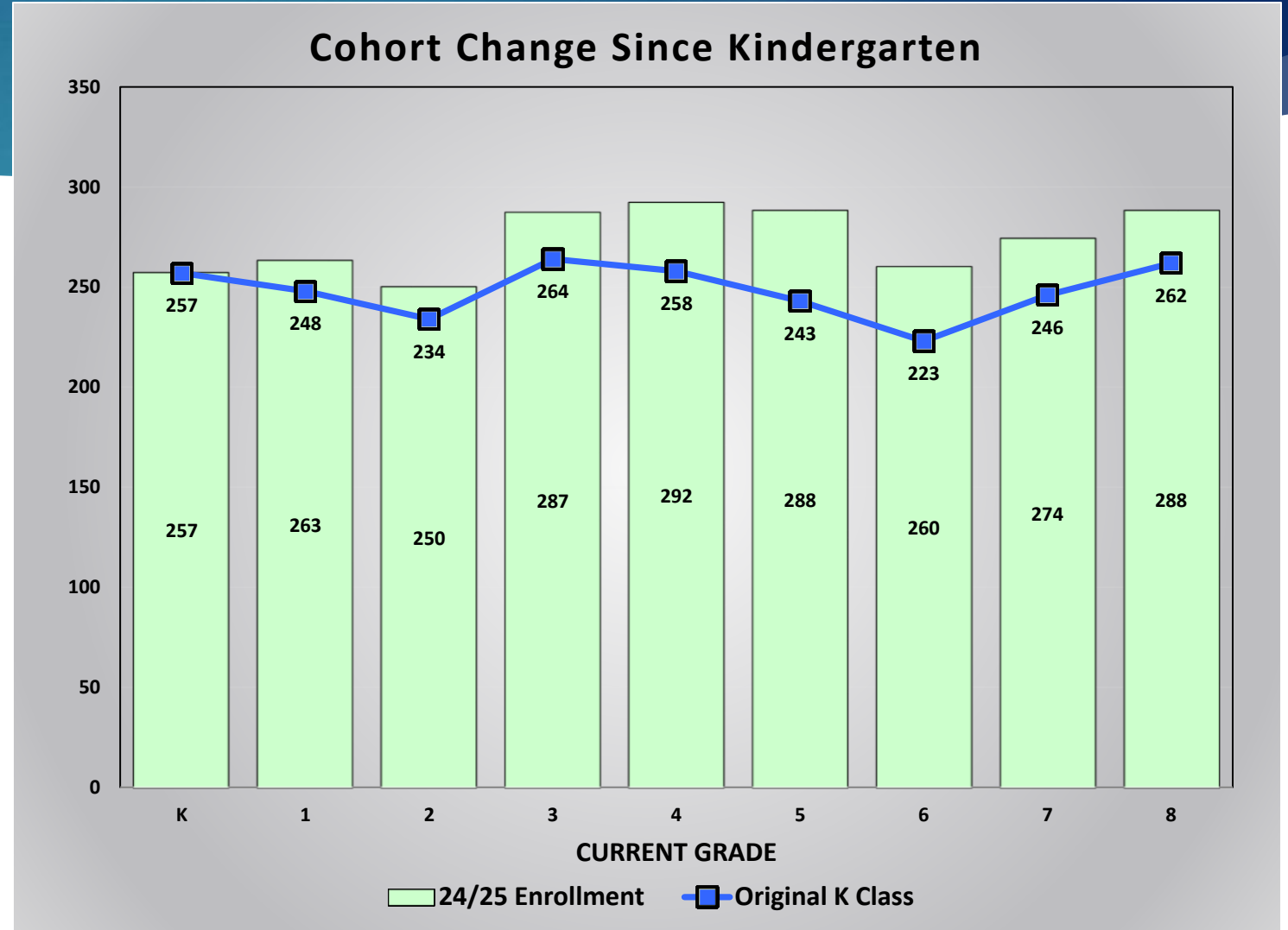


*Kindergarten Totals may include some Transitional Kindergarten students for some of the past years to more accurately correlate a 12-month period of births to a 12-month period of enrollment.

Cohort Change Since Kindergarten

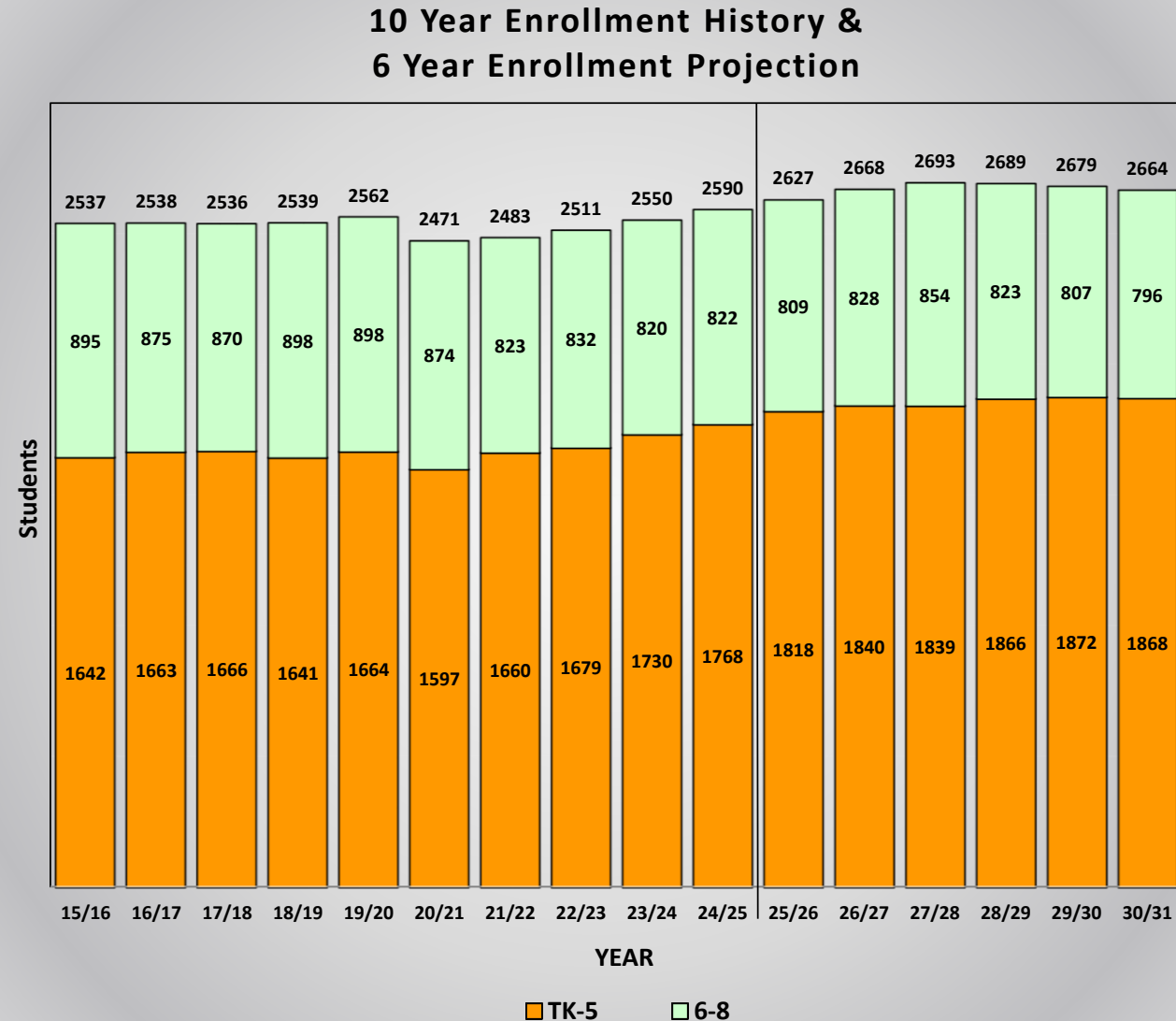
5

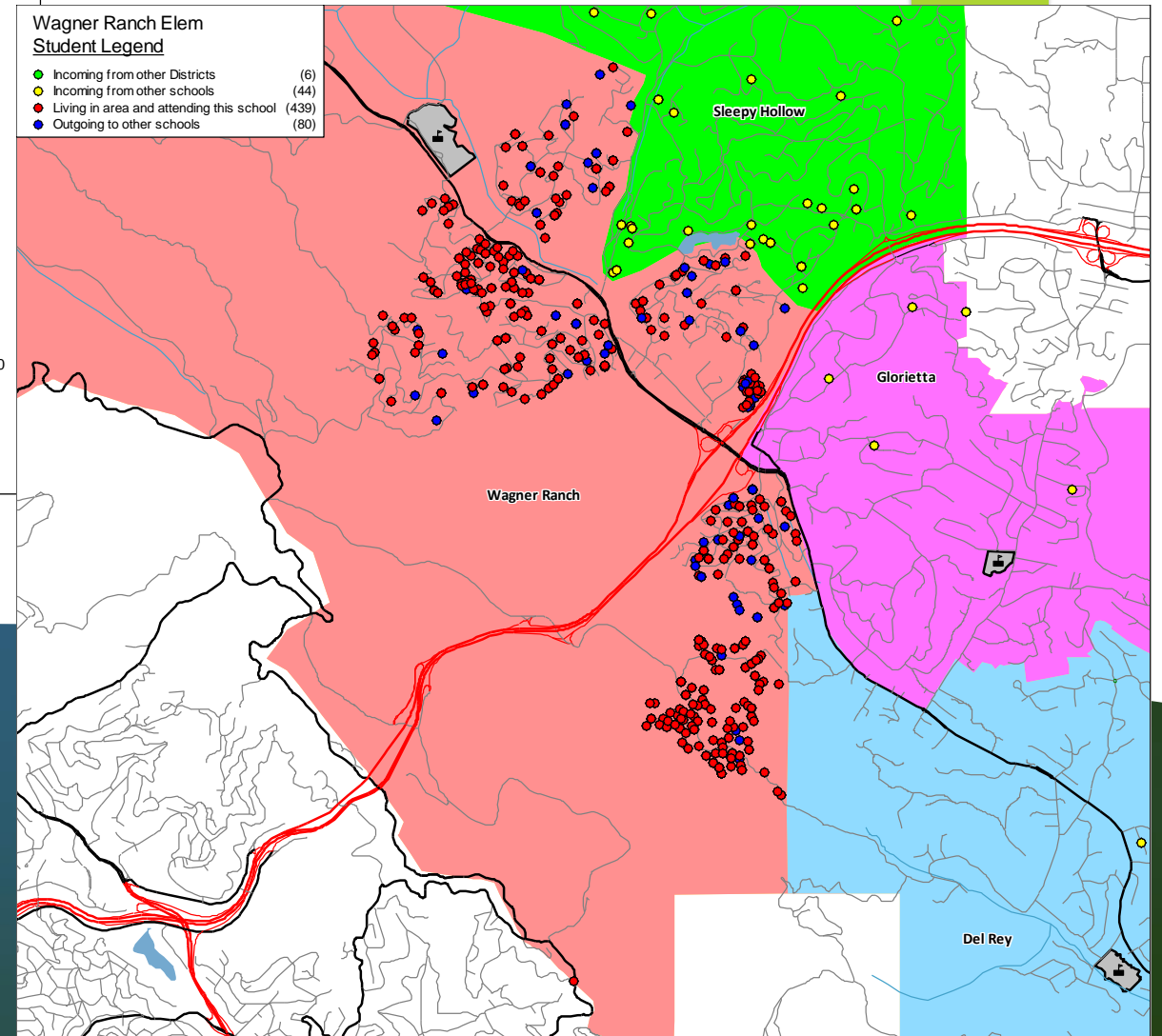
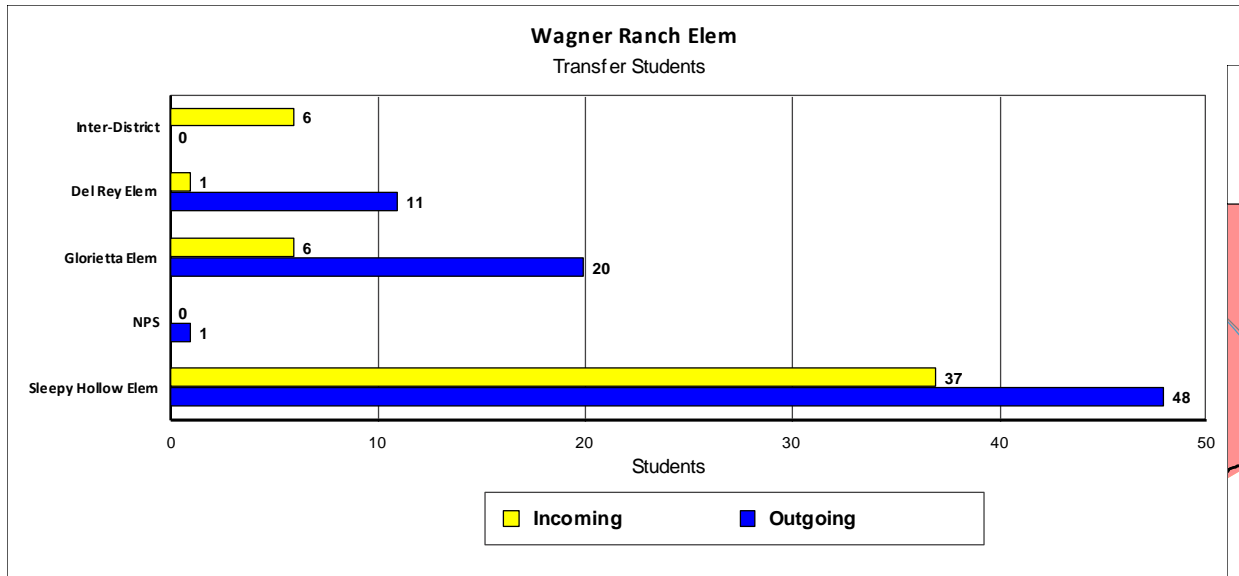
This chart compares the original kindergarten class size to the current enrollment for each grade.



Enrollment History & Projections

- This chart provides a summary of the last ten (10) years of historic enrollment and projected enrollment for the next six (6) years.



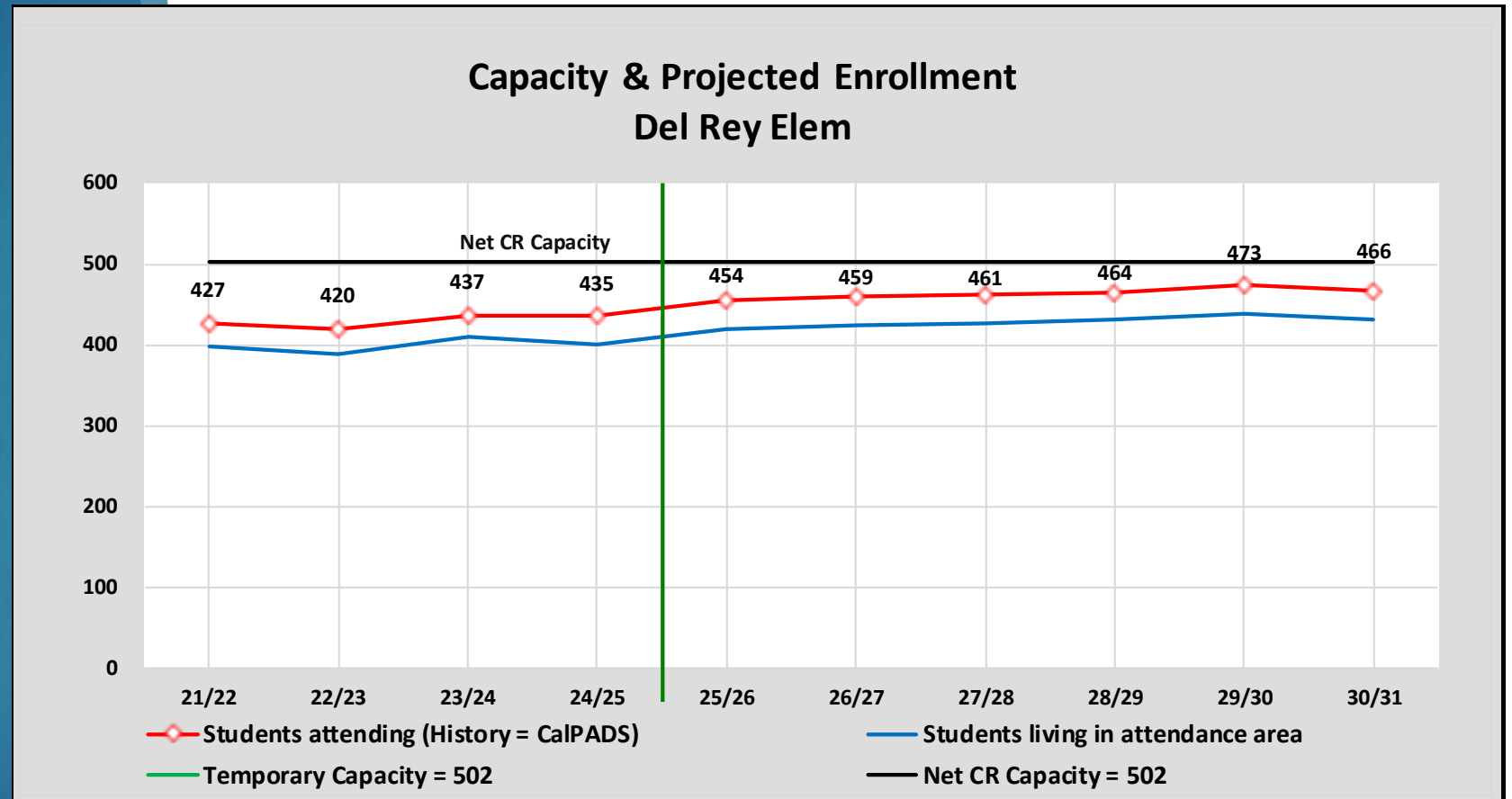


Sample of Map & Chart Provided For Each School

Demographics Sample Map

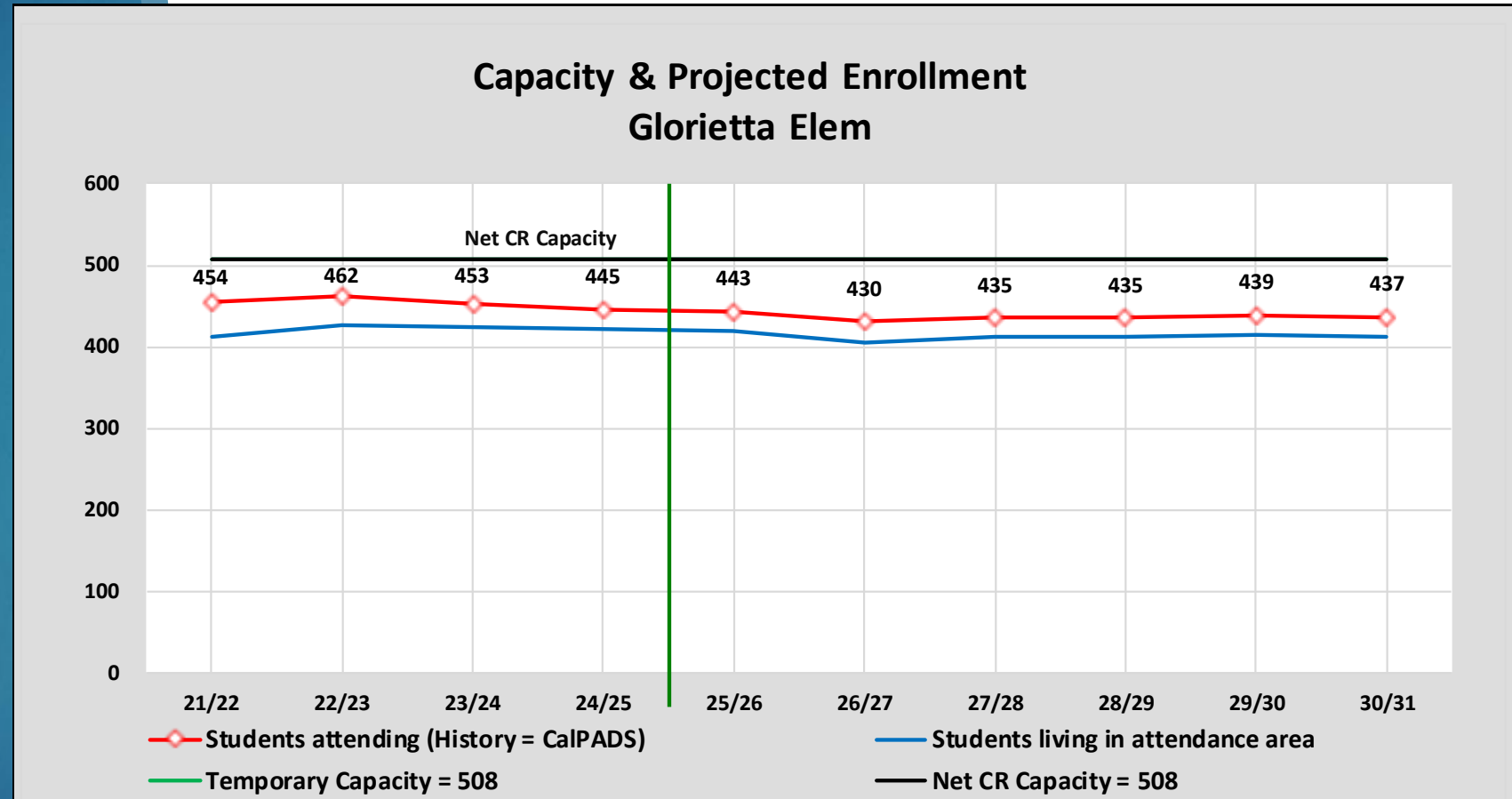
Del Rey Projections

Enrollment peaks at 473 in 2029/30.



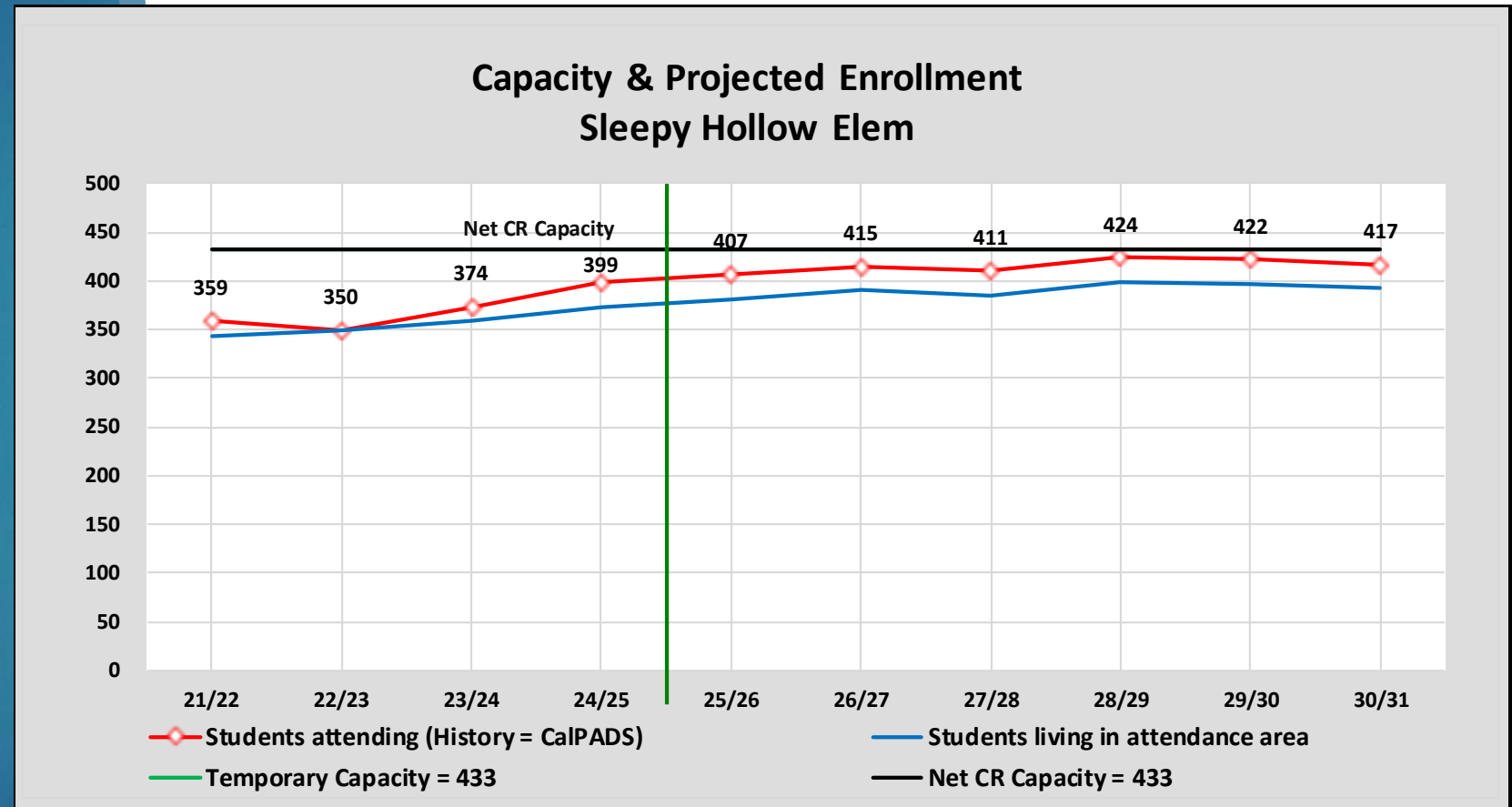
Glorietta Projections

Enrollment is projected to decrease slightly.



Sleepy Hollow Projections

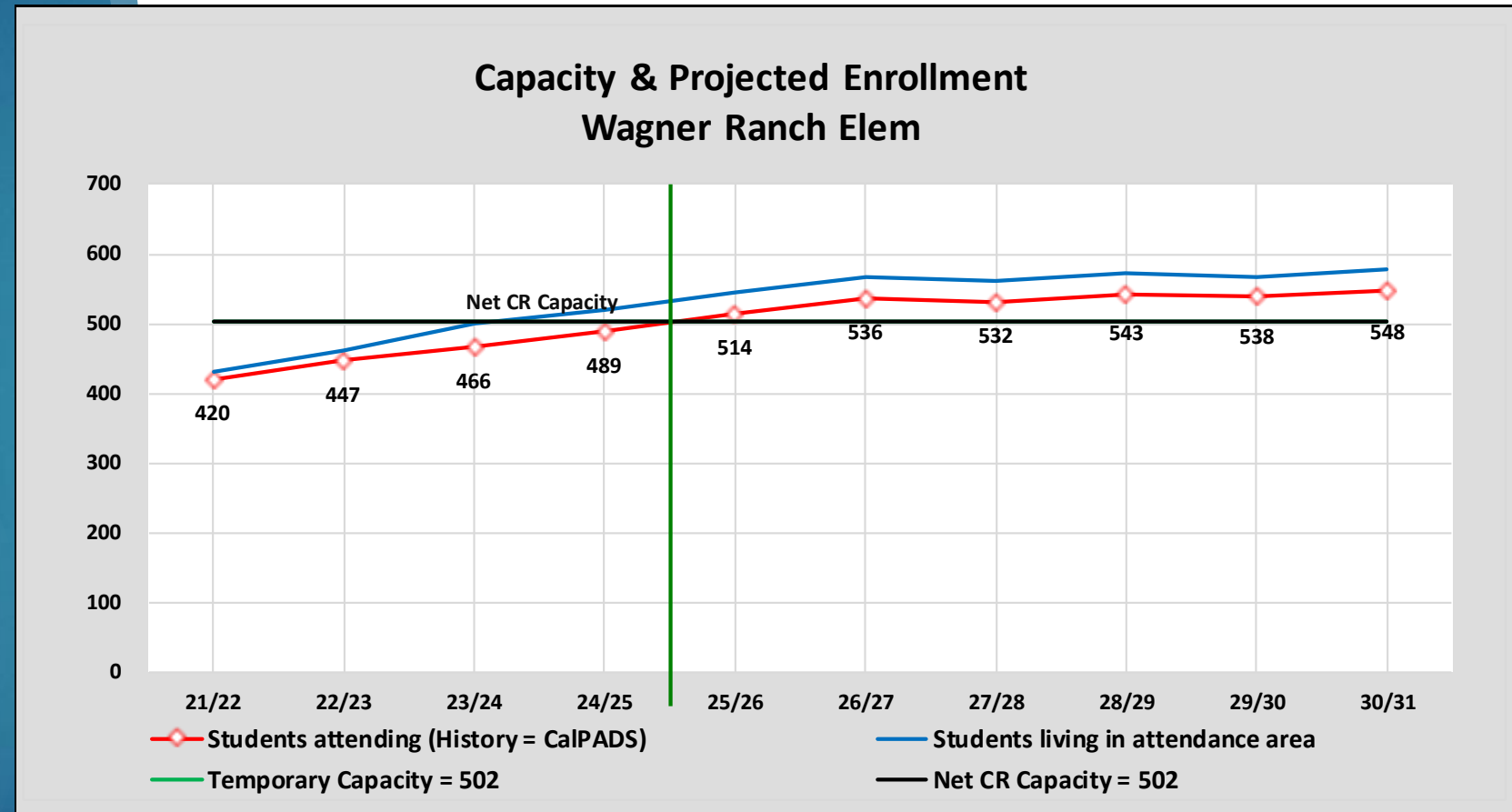
Enrollment is projected to peak in 2028/29 with 424 students.



Wagner Ranch Projections

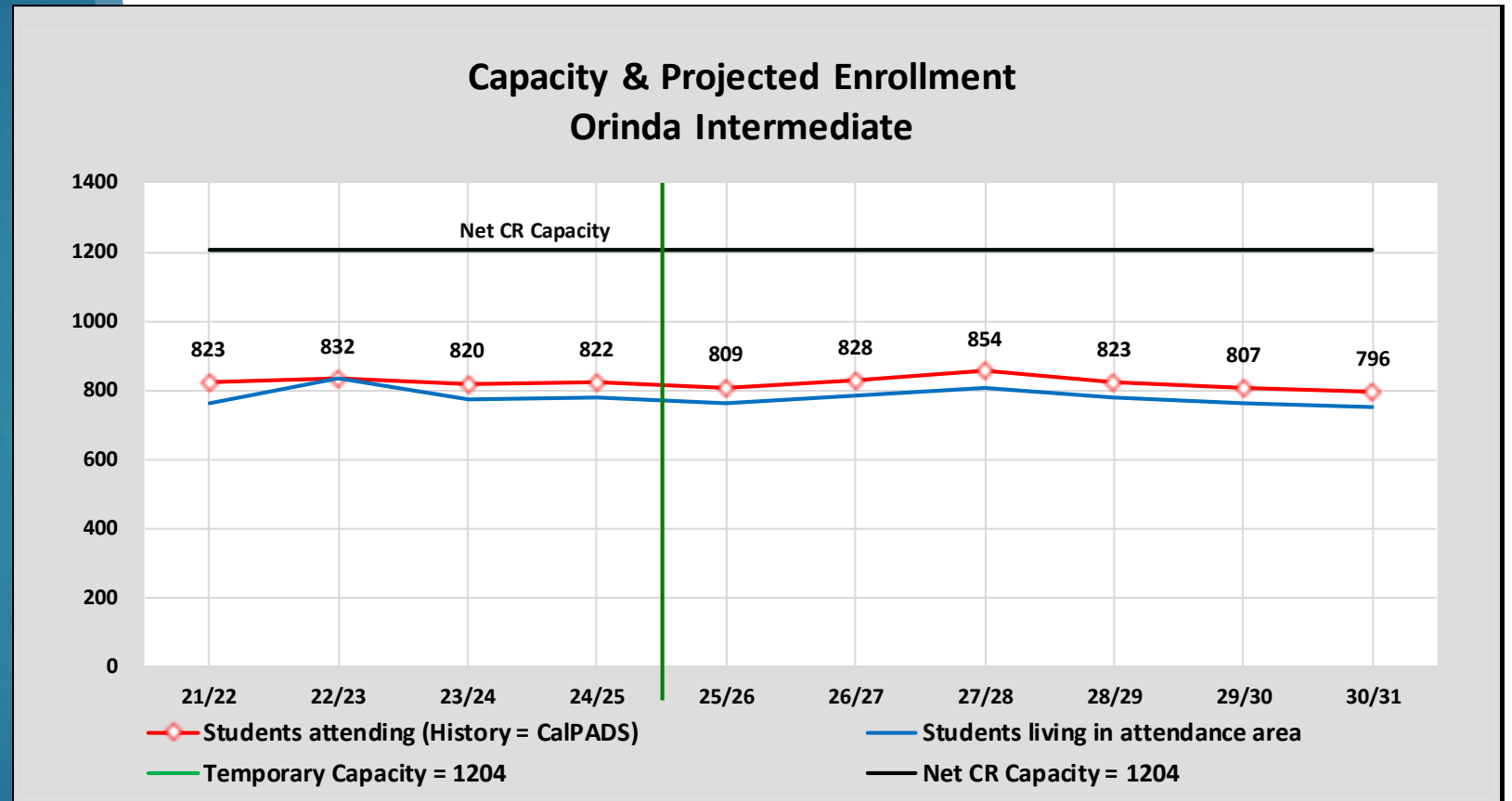
Enrollment grows for the next two years and then stabilizes.

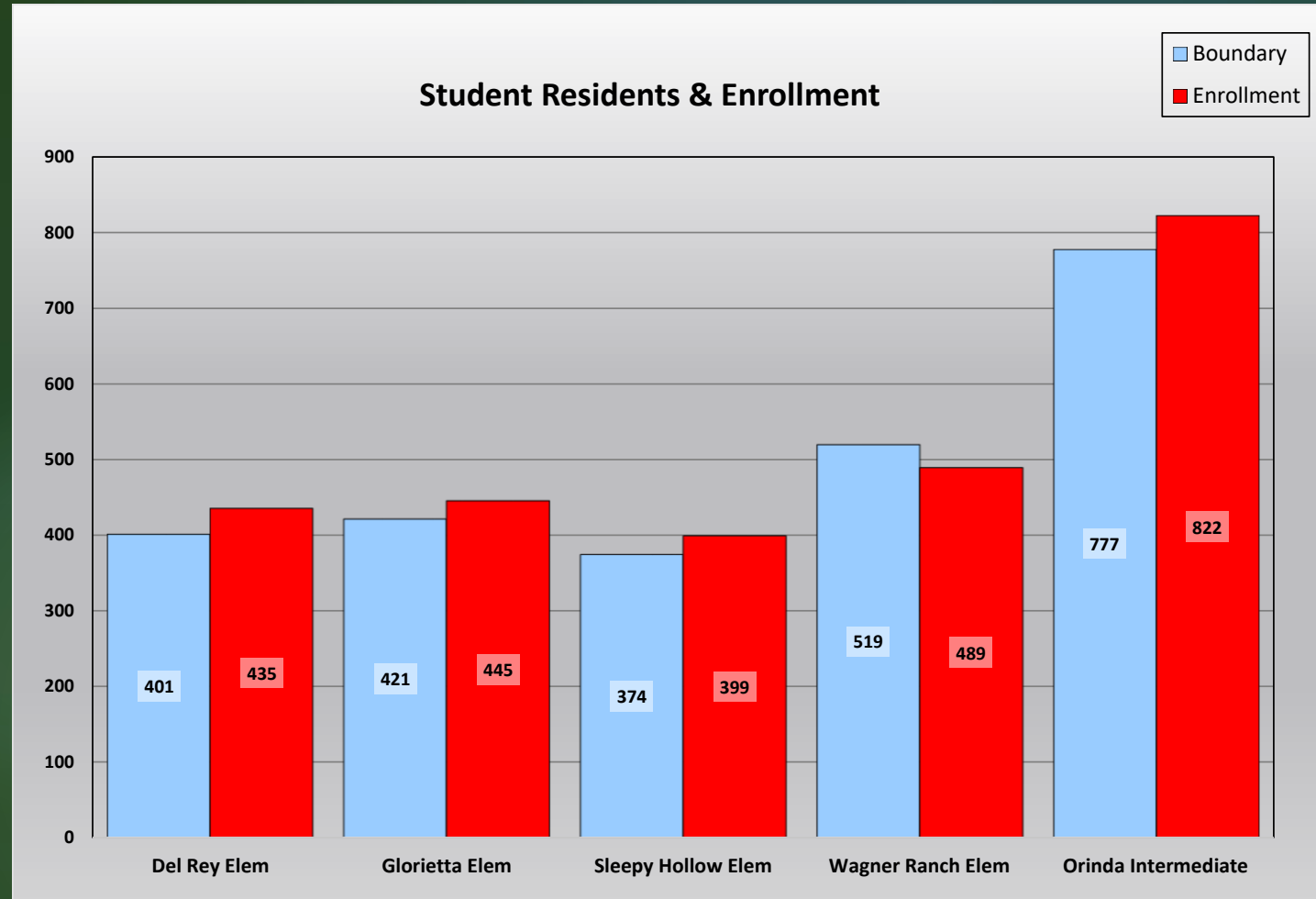
Actual enrollment needs to be monitored to see actual impacts of TK next year as all 4 year olds are eligible to attend.



Orinda Intermediate Projections

Enrollment is relatively stable with a slight peak in 2027/28.





Students in Boundary & Enrollment Comparison

Utilization Chart

► The following chart shows the current and projected utilization rates for each school. It has been color coded with blue representing a utilization rate of less than 70%, green for 80% to 90%, orange for 90% to 100% and red for the schools that have over 100% utilization.

School Facility Utilization

	Net	Net CR	2024/25	2030/31	2024/25	2030/31
	Classrooms	Capacity	Current Enrollment	Projected Enrollment	Current Utilization	Projected Utilization
<u>Elementary Schools</u>						
Del Rey Elem	22	502	435	466	86.7%	92.8%
Glorietta Elem	22	508	445	437	87.6%	86.0%
Sleepy Hollow Elem	19	433	399	417	92.1%	96.3%
Wagner Ranch Elem	22	502	489	548	97.4%	109.2%
Sub-Totals	85	1,945	1,768	1,868	90.9%	96.0%
<u>Intermediate Schools</u>						
Orinda Intermediate	43	1,204	822	796	68.3%	66.1%
Sub-Totals	43	1,204	822	796	68.3%	66.1%
District Totals	128	3,149	2,590	2,664	82.2%	84.6%

Additional Options/ Considerations

Area A has 25 students attending Wagner Ranch.

Area B has 62 students attending Wagner Ranch.

If Wagner Ranch continues to be impacted, one of these areas could be assigned to Glorieta.

