

NOTICE OF PLANNED CLOSURE OF PUBLIC PROPERTY/ENFORCEMENT OF CAMPING ORDINANCES TO

LEGAL SERVICES OF NORTHERN CALIFORNIA (“LSNC”)

This notice serves as the required notice of the City’s planned closure of public property / enforcement of its Anti-Camping Ordinances and Regulations pursuant to Paragraph 10(c) of *Warren, et al. v. City of Chico, et al.* Settlement Agreement.

Location of Public Property 1: Big Chico Creek from Cherry St. Pedestrian Bridge. to Rose Ave.
See map.

The City has determined there are (10) people camping at this location. Of those people, (3) have been assessed during a prior enforcement operation. Those (3) persons should not be included in the count because they have already refused shelter or have been exited from a shelter due to behavioral problems. Further, there are (13) abandoned or unoccupied campsites at this location.

Location of Public Property 2: Little Chico Creek from Pine St. to Pomona Ave. See map.

The City has determined there are (9) people camping at this location. Of those people, (4) have been assessed during a prior enforcement operation. Those (4) persons should not be included in the count because they have already refused shelter or have been exited from a shelter due to behavioral problems. Further, there are (8) abandoned or unoccupied campsites at this location.

Location of Public Property 3: Bike Path between W. Sacramento Ave. and W. Lindo Ave. See map.

The City has determined there are (12) people camping at this location. Of those people, (4) have been assessed during a prior enforcement operation. Those (4) persons should not be included in the count because they have already refused shelter or have been exited from a shelter due to behavioral problems. Further, there are (2) abandoned or unoccupied campsites at this location.

The City will provide the **“7-DAY NOTICE OF CLOSURE OF PUBLIC PROPERTY/ENFORCEMENT OF CAMPING**

ORDINANCES” to all Homeless Persons at this location on **May 5th 2026**. *Further, the City requests LSNC meet with the Target Team to verify counts and confirm the location of enforcement prior to that date. If LSNC disagrees with the City’s count and contends there are too many people camping at these locations than there are beds available, the City proposes beginning enforcement operations and will stop enforcing on persons at this location who cannot enter shelter because one of the shelters has become fully occupied.*

The City has determined there are (19) available pallet shelters at Genesis.

The City has determined there are (33) beds available at the Torres Community Shelter. (23) of those beds are in the men’s dorm, (8) are in the women’s dorm, and (2) are in the overflow dorm.

You may confirm the above shelter availability by contacting:

Pallet Shelter Contact:

Name: Amber Abney-Bass

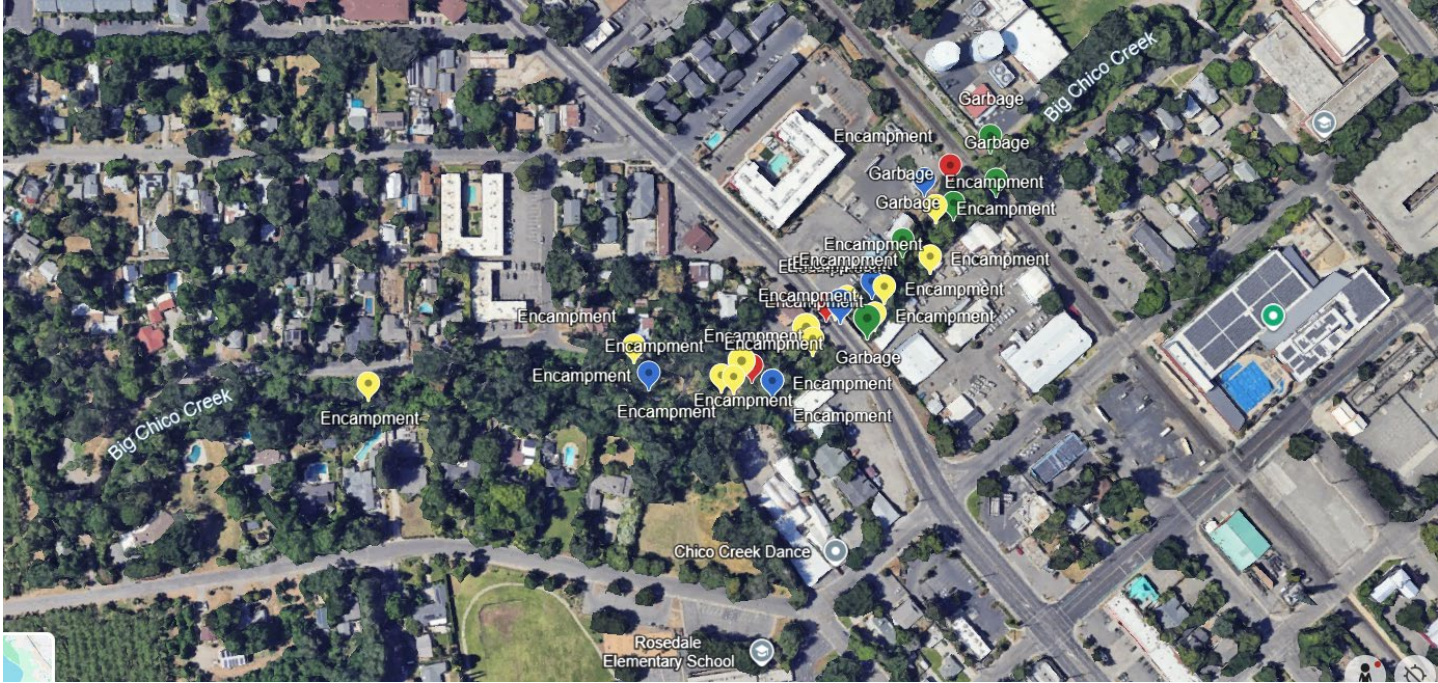
Phone: 530-345-2640; Email: amber@jesuscenter.org

Torres Shelter Contact: Name: Jacque Lewkowicz

Phone: 530-891-9048; Email: jacque@truenorthbutte.org

Red = Previously Assessed
Yellow = Unoccupied
Blue = Needing Assessment
Green = Garbage

Big Chico Creek from Cherry St. Pedestrian Bridge. to Rose Ave.



Little Chico Creek from Pine St. to Pomona Ave.



Bike Path between W. Sacramento Ave. and W. Lindo Ave.

