

**EL DORADO UNION HIGH SCHOOL DISTRICT**

4675 Missouri Flat Rd.  
Placerville, CA 95667-6816

Phone: (530) 622-5081

**SchoolWorks, Inc.**

8700 Auburn Folsom Rd, 200  
Granite Bay, CA 95746

Phone: 916-733-0402

# **2025/26 DEMOGRAPHICS AND ENROLLMENT PROJECTIONS**

**NOVEMBER 2025**



**TABLE OF CONTENTS**

	Page
EXECUTIVE SUMMARY .....	1
INTRODUCTION.....	3
METHODOLOGY .....	4
DISTRICT BOUNDARIES.....	6
NEW HOUSING DEVELOPMENTS .....	10
CLASSROOM COUNTS AND CAPACITY .....	12
SCHOOL PROJECTIONS.....	13
SCHOOL FACILITY UTILIZATION .....	32

**CHARTS**

	Page
10 YEAR ENROLLMENT HISTORY AND 6 YEAR ENROLLMENT PROJECTIONS .....	2
CURRENT ENROLLMENT BY GRADE .....	8
HISTORIC ENROLLMENT AND COHORTS .....	9
STUDENT YIELD RATE ANALYSIS.....	10
NEW DEVELOPMENT PROJECTIONS.....	11
NEW DEVELOPMENT CONSTRUCTION .....	11
LOADING STANDARDS.....	13
<b>CAPACITY &amp; PROJECTED ENROLLMENT</b>	
EL DORADO HIGH .....	15
OAK RIDGE HIGH .....	17
PONDEROSA HIGH.....	19
UNION MINE HIGH.....	21
INDEPENDENCE HIGH.....	23
PACIFIC CREST ACADEMY .....	25
NON PUBLIC SCHOOL.....	26
STUDENT ATTENDANCE MATRIX.....	27
COMPREHENSIVE HIGH SCHOOLS STUDENT RESIDENTS & ENROLLMENT .....	28
10 YEAR ENROLLMENT HISTORY AND 6 YEAR ENROLLMENT PROJECTIONS.....	29
ENROLLMENT PROJECTION SUMMARY BY GRADE .....	30
ENROLLMENT PROJECTION SUMMARY BY SCHOOL .....	30
ENROLLMENT PROJECTIONS BY SCHOOL AND GRADE.....	31
SCHOOL FACILITY UTILIZATION .....	32

**MAPS**

	Page
DISTRICT MAP WITH STUDENT RESIDENTIAL LOCATIONS .....	6
HIGH SCHOOL BOUNDARIES AND COMPREHENSIVE HIGH SCHOOL LOCATIONS .....	7
NEW HOUSING DEVELOPMENTS .....	10
<b>SCHOOL BOUNDARY MAPS</b>	
EL DORADO HIGH .....	14
OAK RIDGE HIGH .....	16
PONDEROSA HIGH .....	18
UNION MINE HIGH.....	20
INDEPENDENCE HIGH.....	22
PACIFIC CREST ACADEMY .....	24
SCHOOL FACILITY UTILIZATION – HIGH SCHOOLS .....	33

# El Dorado Union High School District

## 2025/26 Demographics and Enrollment Projections

---

### EXECUTIVE SUMMARY

Located in the Sierra Nevada foothills between Sacramento and South Lake Tahoe, the District encompasses 1,250 square miles, including a large portion of El Dorado County's historic Gold Rush region. The area includes about 40 communities along U.S. Highway 50 corridor that span the county from Kyburz and Pollock Pines in the east to Latrobe and El Dorado Hills in the west.

El Dorado Union High School District consists of four comprehensive high schools, three alternative schools, one charter school, one community day school, and one Career Technical Education (CTE) program, which includes a Regional Occupational Program (ROP). El Dorado Union High School District grew in enrollment from an enrollment of 6,654 students during the 2016/17 school year to a peak enrollment of 6,898 in 2021/22 and has since been declining to a current enrollment of 6,336 students.

Last year's Demographics and Enrollment Projections Study projected an enrollment of 6,320 students. The actual enrollment this year is up by 16 students compared to the projection.

El Dorado Union High School District is projected to grow in enrollment by 0.19% (or 12 students) for the 2026/27 school year. The District is projected to grow slightly in enrollment over the next three years before declining slightly the following three years, with a projected 6,165 students in the 2031/32 school year. This is an overall decline of 171 students, which is a decrease of 2.70%.

Future impacts from new housing development is predicated upon information provided by local municipalities on the development of 1,669 housing units over the next six years. If the building rates increase or decrease, then the timeline shown in this Study will need to be modified accordingly. These projected new developments in the District's boundary are expected to generate 22 high school students next year, or a total of 150 high school students in the next six years.

Based on current District loading standards and classroom space, the District has a net classroom capacity of 8,416 students, and a current enrollment of 6,336 students. This gives the District a current utilization factor of 75.3%. The projected utilization factor in six years will be 73.3%. This assumes loading standards remain constant and no additional facilities are built or removed.

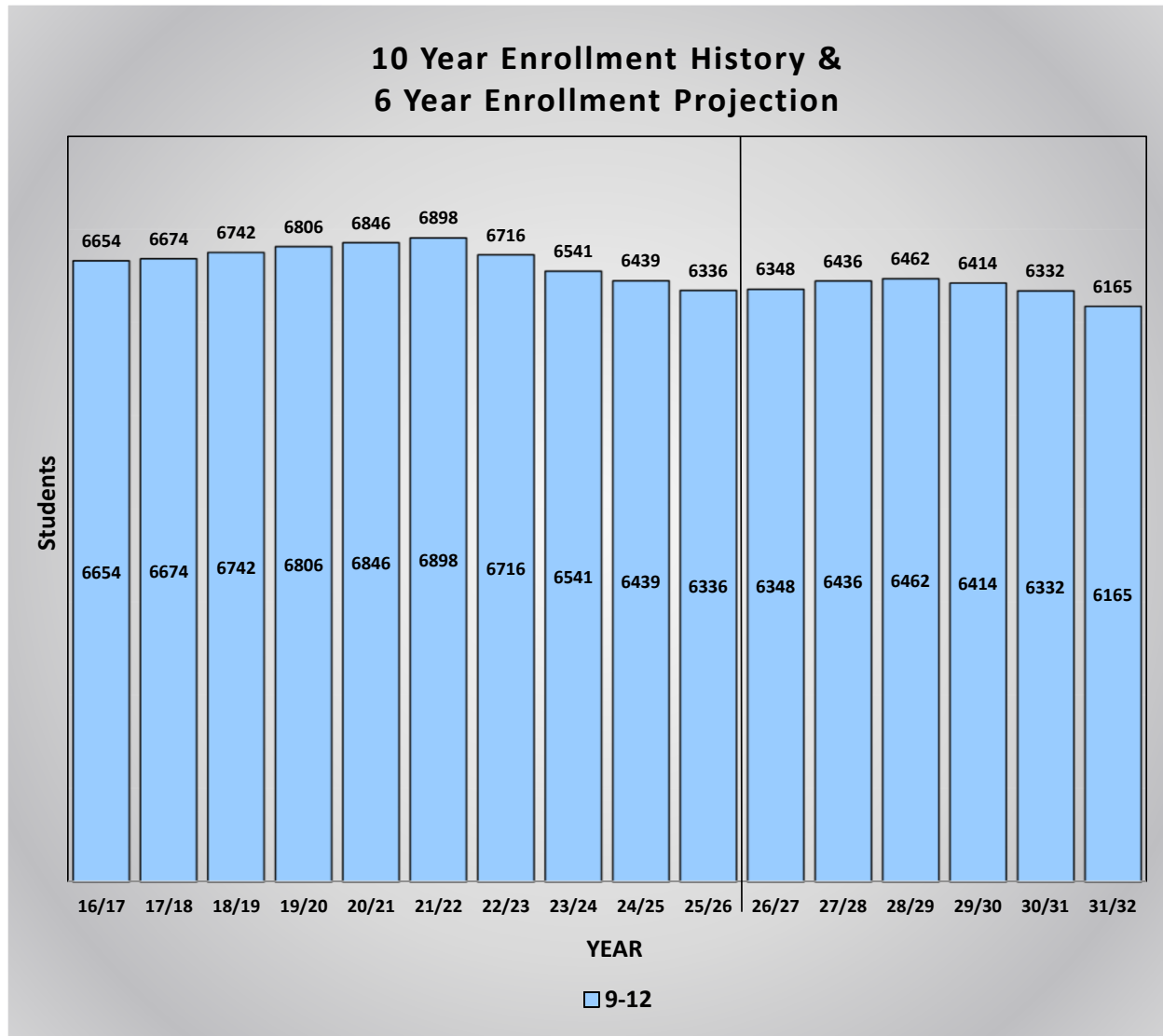
These projections assume the transfers between schools remain consistent. If changes in facilities, schedules, programs or policies are made, then the patterns may be impacted.

# El Dorado Union High School District

## 2025/26 Demographics and Enrollment Projections

### Ten Year Enrollment History and Six Year Enrollment Projections

This graph shows a summary of the projections for the entire District. It shows the current enrollment for 2025/26, the historic enrollment for the past nine years, and the projected enrollment for the next six years. The end result is a total of 6,165 students in the District in 2031/32.



The El Dorado Union High School District grew in enrollment from an enrollment of 6,654 students during the 2016/17 school year to a peak enrollment of 6,898 in 2021/22 and has since been declining to a current enrollment of 6,336 students.

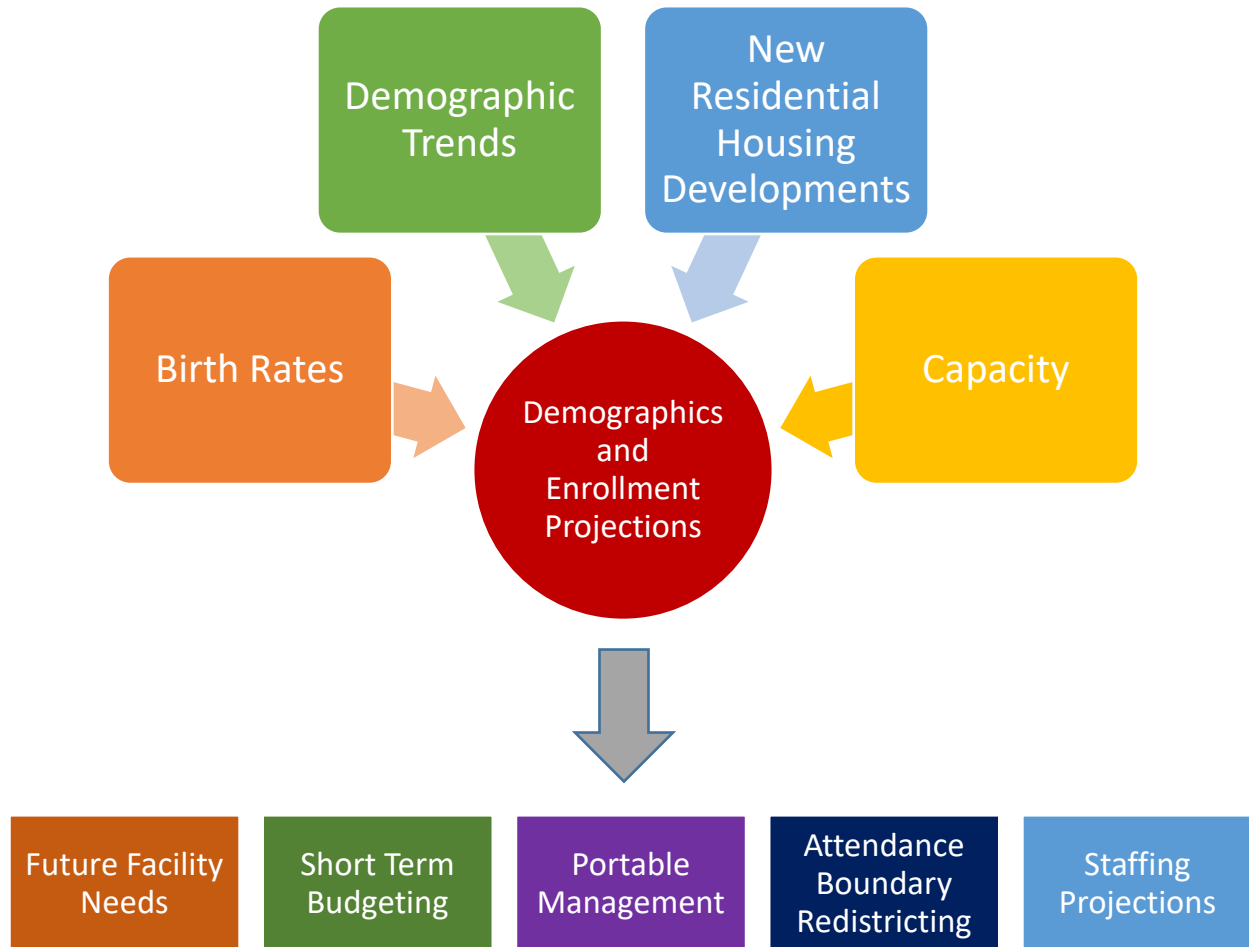
This graph is color coded by grade groupings:

Blue represents the historic and projected enrollment for high school grades 9-12.

The entire District enrollment is shown at the top of each bar.

**INTRODUCTION**

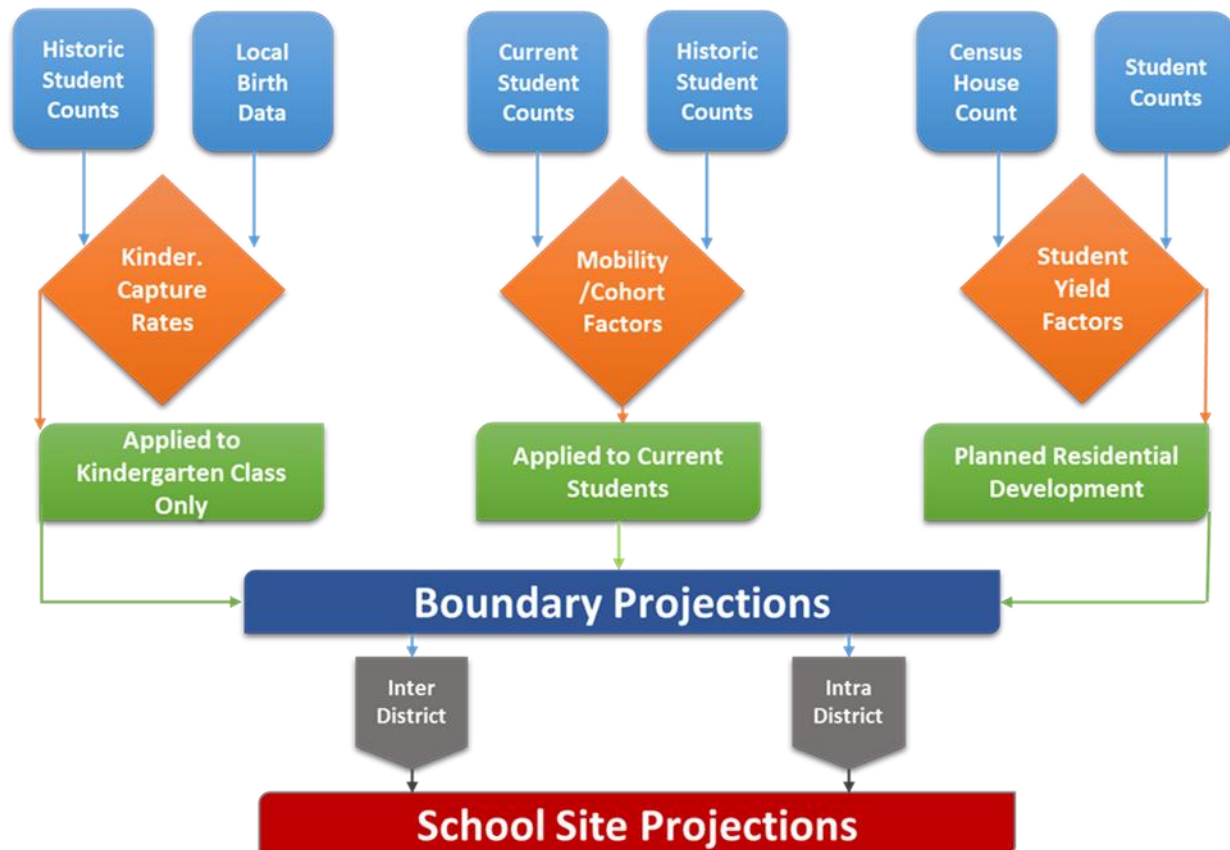
This Demographics and Enrollment Projections Study provides a comprehensive enrollment analysis for the El Dorado Union High School District. The district-wide and school-specific enrollment projections are meant to serve as a planning tool to help with both long- and short-term planning. Demographic Studies examine the factors that influence school enrollments, namely trends in demographics, birth rates, and housing development. They are also used as a tool to identify certain facility planning requirements such as capacity, utilization of existing facilities, planning for modernization or new construction, and attendance boundary redistricting.



This Study provides information based on the 2025/26 District enrollments and programs, local planning policies and residential development. As these factors change and timelines are adjusted, the Demographic and Enrollment Projections Study should be revised to reflect the most current information.

## METHODOLOGY

The chart below summarizes the inputs to calculate the boundary and school site projections.



The **enrollment projections** for each school are generated using a State standard weighted cohort trend analysis. The basic projections are created by studying the individual geographic areas. Once the trends are analyzed for each area, the base projections are modified using the following procedures:

- a) **New Housing Development** rates and **yield rates** are compared to the historical impact of development, and if the future projections exceed the historical values, the projections are augmented accordingly.
- b) **Inter-District student** counts are not included in the base geographic trend analysis since these students reside outside of the District. Therefore, the current number of students-per-school and students-per-grade are added to the base projections.
- c) **Intra-District students** are those who transfer from one school to another. The number of students transferring into and out of each school are calculated and used to determine the difference between the projections for students living in each attendance area versus those that are projected to attend the school.

## El Dorado Union High School District 2025/26 Demographics and Enrollment Projections

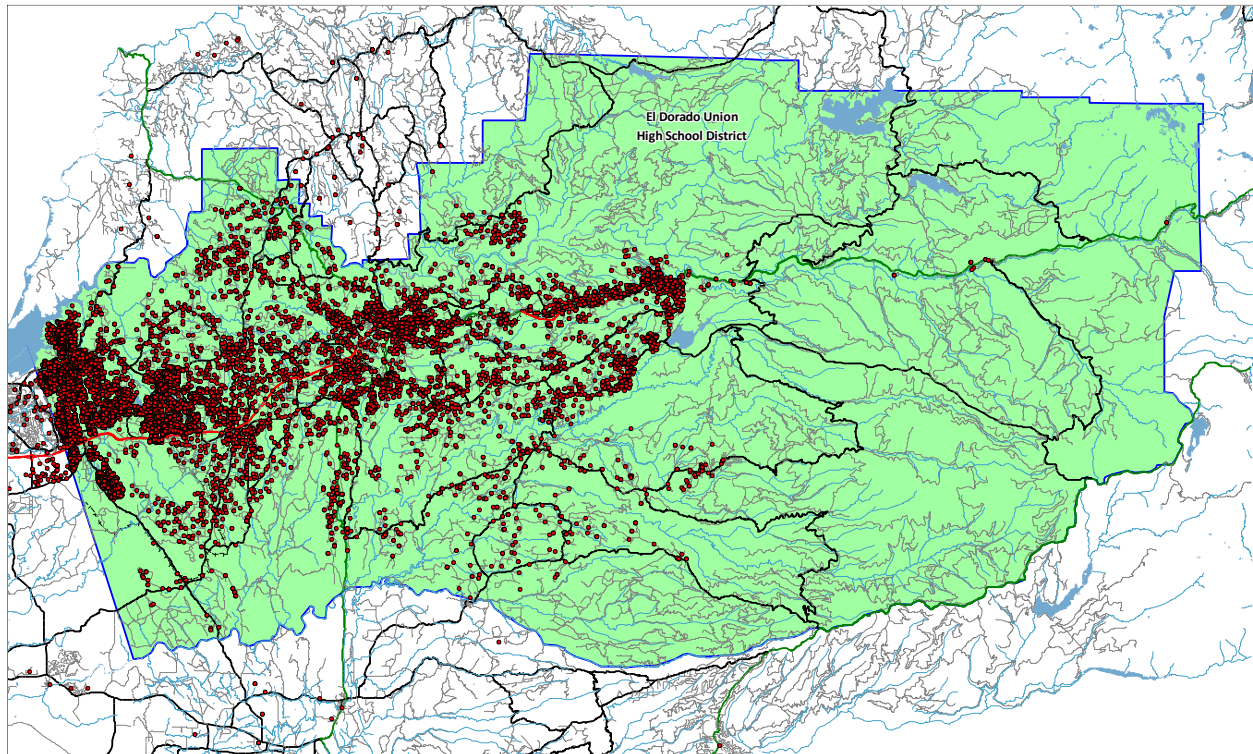
---

- d) The projections for **special education students** and **alternative programs** are created by assuming those programs typically serve a percentage of the total District population. Therefore, as the District grows or declines, the enrollment in those programs would increase or decrease accordingly.
  
- e) **Cohort Trend Analysis:** The number of students living in the boundary are used to generate the cohort factors. The annual trends over the past three years were analyzed and the average cohort was calculated with the current year weighted 50%, the prior year 33.3% and the last year 16.7%. This gives the current trends more value in determining the projections. Those cohorts are then used to determine the students who will be residing in each attendance area for the following years.

**Neighborhood School Attendance Area Analysis:** Each school attendance boundary is input into our GIS (Geographic Information Systems) Software. Students are counted in each of the attendance area boundaries based on their residential address and can be studied to view optimum and balanced utilizations. Attendance pattern maps for each individual boundary will analyze impacts of intra-district transfers from within the district boundary, as well as inter-district transfers from neighboring school districts.

**DISTRICT BOUNDARIES**

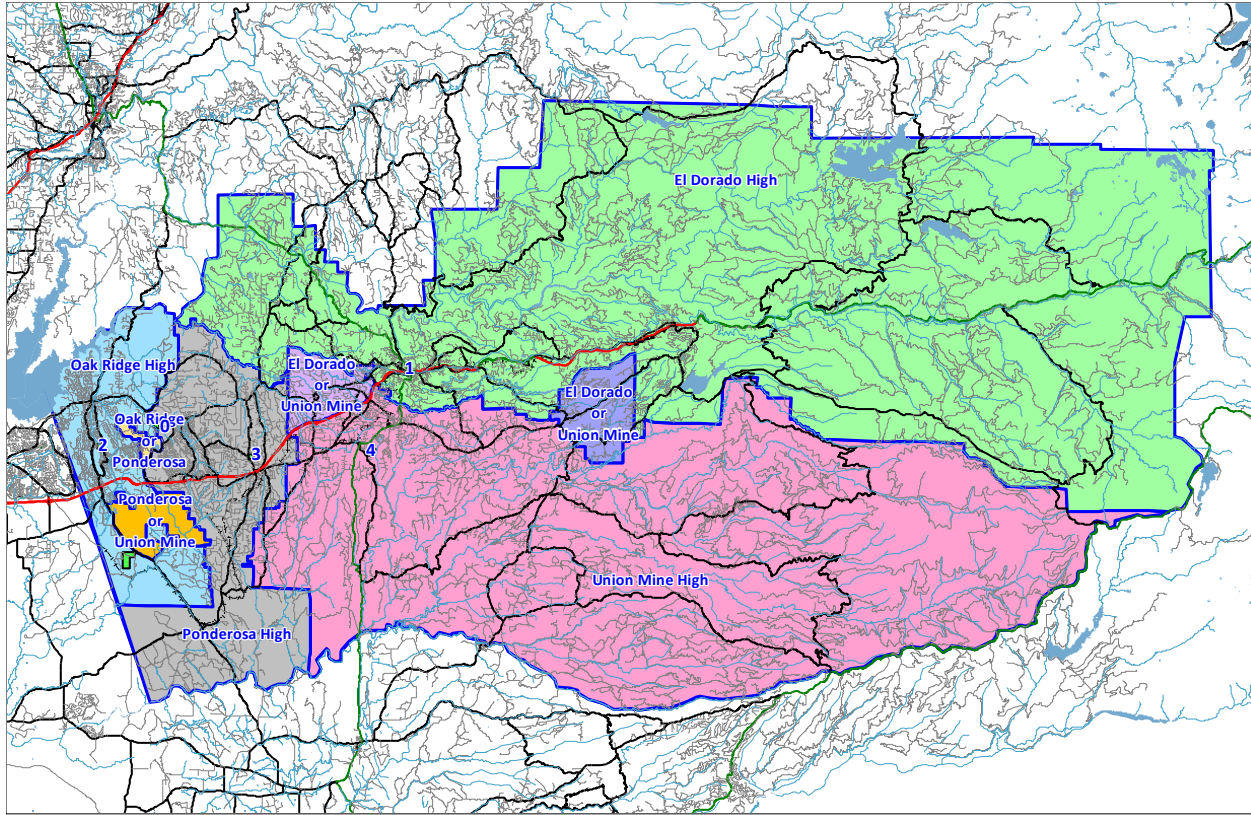
**District Map with Student Residential Locations**



This map shows the District boundary along with the location of each student based on their residential address. This geographic data is the foundation for our demographic analysis. Any red dots outside the District boundary will represent students attending one of the District schools or programs but have a residence outside the District. This map also identifies different areas of student population density.

# El Dorado Union High School District 2025/26 Demographics and Enrollment Projections

## High School Boundaries and Comprehensive High School Locations

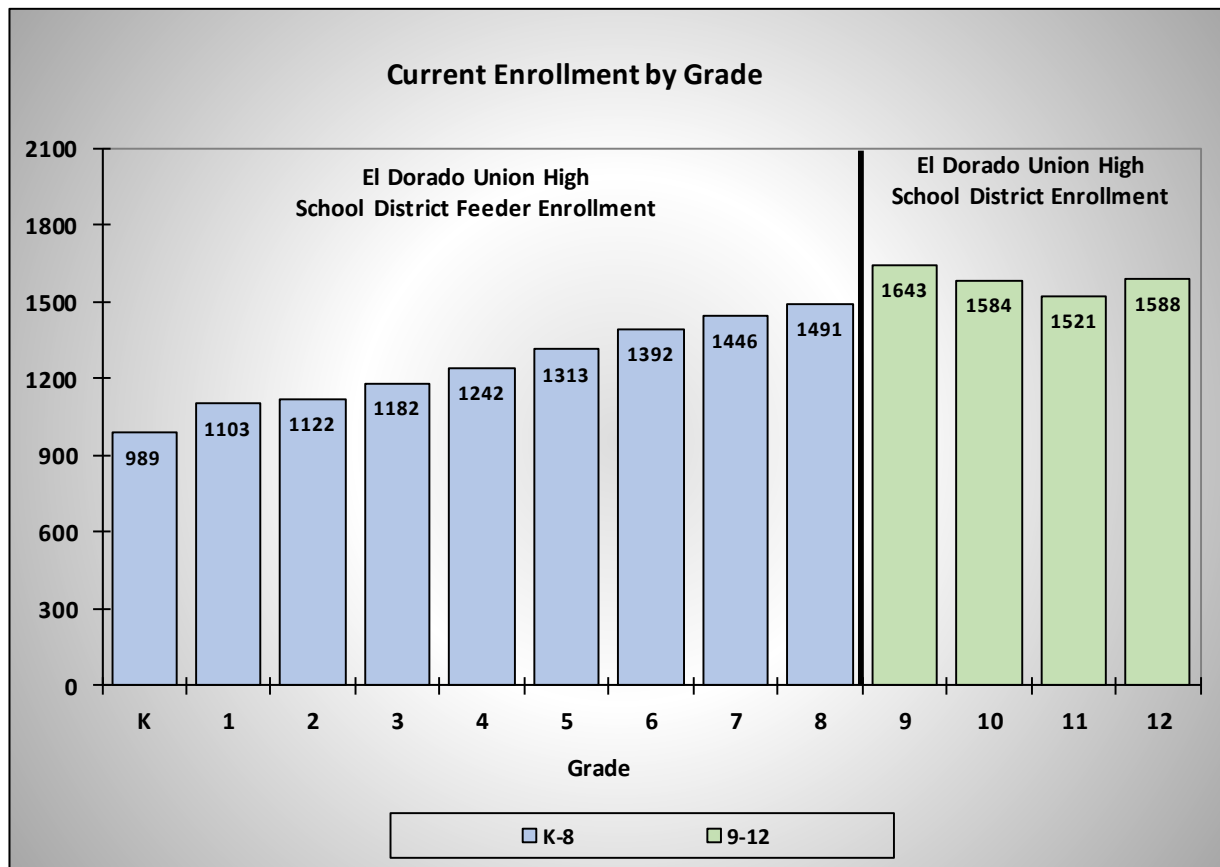


<u>Id</u>	<u>School</u>	<u>Grades</u>	<u>Id</u>	<u>School</u>	<u>Grades</u>
1	El Dorado High	9-12	3	Ponderosa High	9-12
2	Oak Ridge High	9-12	4	Union Mine High	9-12

El Dorado Union High School District high school attendance boundaries are shown in color shaded areas.

# El Dorado Union High School District 2025/26 Demographics and Enrollment Projections

## Current Enrollment Analysis



This chart illustrates the October 2025 enrollment by grade level for El Dorado Union High School District and the combined enrollment of the feeder school districts. The chart provides insight on how future class sizes may affect the overall enrollment at El Dorado Union High School District. When analyzing the feeder enrollment, the each grade's class is currently smaller than the grade above it. This could create a decrease in enrollment as these smaller class sizes work their way into high school. This chart is meant to visually represent the enrollment numbers as of today and do not consider other factors such as new housing development, private and charter school impacts or changes in transfer trends.

# El Dorado Union High School District

## 2025/26 Demographics and Enrollment Projections

### Historic Enrollment and Trends

El Dorado Union High School District								
Historic Enrollment and Cohorts								
Grade	CalPADS Enrollment				Historic Cohorts			Weighted Average
	22/23	23/24	24/25	25/26	22 to 23	23 to 24	24 to 25	
9	1,609	1,525	1,590	1,643				
10	1,704	1,597	1,538	1,584	-12	13	-6	-0.7
11	1,724	1,693	1,577	1,521	-11	-20	-17	-17.0
12	1,679	1,726	1,734	1,588	2	41	11	19.5
Totals	<b>6,716</b>	<b>6,541</b>	<b>6,439</b>	<b>6,336</b>	<b>-7.0</b>	<b>11.3</b>	<b>-4.0</b>	<b>0.6</b>
Annual Change:		-175	-102	-103				

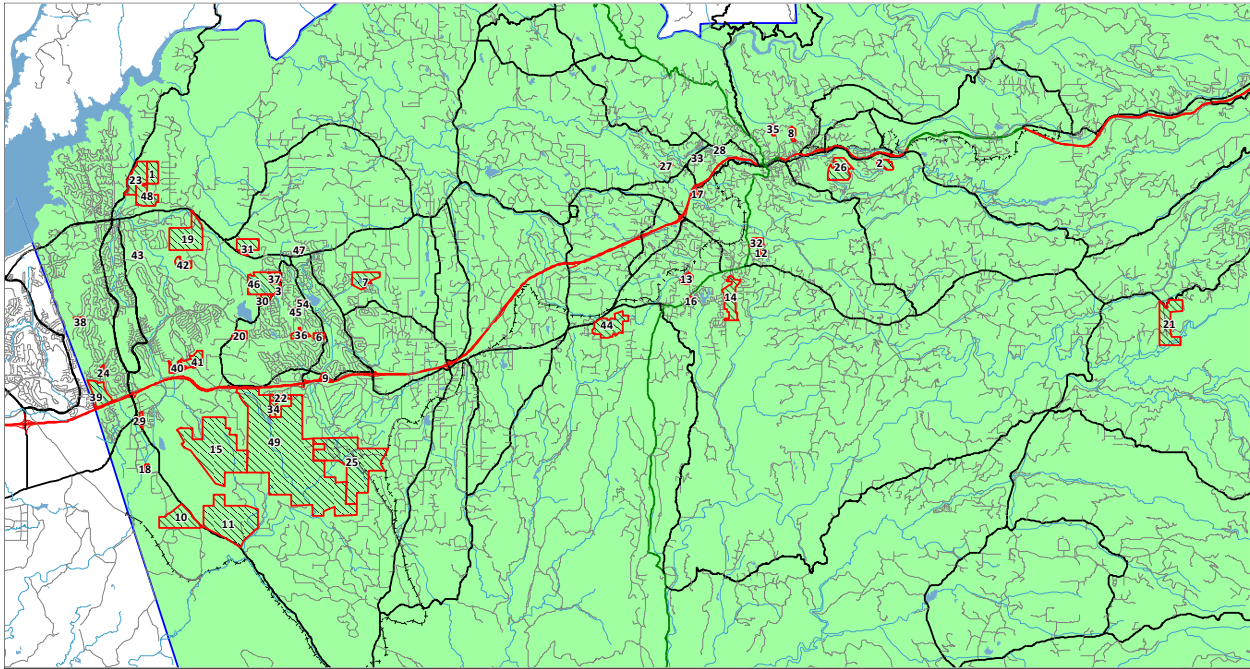
This chart shows the enrollment by grade level over the past four years. The cohort values were calculated for each grade and each year, along with the weighted average for each grade. A positive cohort value indicates that grade is expected to have more students than the previous grade last year. A negative value would mean that the grade has fewer students compared to the previous grade last year.

In general, a positive cohort is representative of growth and a negative cohort indicates a decline in enrollment. There are some exceptions.

Another important item to notice is the current breakdown by grade level of the student population. Comparing the number of students in the lower grades to the upper grades can indicate potential increases or decreases in future enrollments. Also, if there is a large class or a small class, it will slowly cause a ripple in the enrollments as it advances a grade each year.

Finally, the annual change at the bottom of this chart indicates the net impact of the changes in enrollment over the past few years.

**NEW HOUSING DEVELOPMENTS**



This close up view of the District shows the location of the projected new development areas.

The City and County Planning Departments within the school district’s boundary were contacted for input on new housing developments.

To determine the impact of the new housing development, each new housing unit is multiplied by the student yield rate. Currently, according to the 2020 Census data, the District student yield rate is 0.119 students per housing unit. For purposes of the enrollment projections in this report, we have applied a 75% factor to the yield rate as new homes initially tend not to yield as many students as the currently existing homes. This breaks down as follows:

<b>El Dorado Union High School District</b>				
<b>Student Yield Rate Analysis</b>				
<u>Grade</u>	<u>2020</u>	<u>2020</u>	<u>Census</u>	<u>Projected</u>
	<u>Students in District</u>	<u>Housing Units</u>	<u>Student</u>	<u>Student</u>
			<u>Yield Rate</u>	<u>Yield Rate</u>
<b>Total 9-12</b>	6,846	57,301	0.119	0.090

Based on 2020 Census Data for school district.

The yield rate used for new construction eligibility determination in the State building program is 0.20 students per home for 9-12 districts. The yield rate in the El Dorado Union High School District is lower than the State average.

# El Dorado Union High School District

## 2025/26 Demographics and Enrollment Projections

The projections used in this report are based on the following number of units projected from these developments:

ID	Name	Remaining Units	Six Year Projection	High School Boundary	ID	Name	Remaining Units	Six Year Projection	High School Boundary
1	Alto LLC	23	23	Oak Ridge	26	Lumsden Ranch	366	0	El Dorado
2	Astoria (Placerville Estates)	38	0	El Dorado	27	Mallard Apartments	72	72	El Dorado/Union Mine
3	Bass Lake Estates	36	12	Ponderosa	28	Middletown Apartments	82	82	El Dorado
4	Cambridge Road Townhomes	12	12	Ponderosa	29	Montano De El Dorado	330	0	Oak Ridge
5	Cameron Heights	25	25	Ponderosa	30	Oak View Estates	24	0	Ponderosa
6	Cameron Hills	41	0	Ponderosa	31	Oakhaven	19	19	Ponderosa
7	Cameron Meadows	161	144	Ponderosa	32	Piedmont Oak Estates	75	0	Union Mine
8	Cottonwood Park Phase 4&6	31	31	El Dorado	33	Placerville Heritage Homes	20	0	El Dorado
9	Country Club Apartments	192	184	Ponderosa	34	Porter Subdivision	54	0	Ponderosa/Union Mine
10	Creekside Village	150	72	Oak Ridge	35	Quartz Mountain	18	12	El Dorado
11	Deer Creek Estates	121	0	Ponderosa/Union Mine	36	Rancho Tierra	83	40	Ponderosa
12	Diamond Springs Village Apts Ph2	31	31	Union Mine	37	Richland	84	40	Ponderosa
13	Diamond View Estates	26	0	Union Mine	38	Ridgeview	5	5	Oak Ridge
14	Dorado Oaks	381	40	Union Mine	39	Saratoga Estates	37	37	Oak Ridge
15	East Ridge	701	175	Ponderosa/Union Mine	40	Serrano Village A-14	51	51	Oak Ridge
16	El Dorado Haven Apts	65	65	Union Mine	41	Serrano Village C2	25	5	Oak Ridge
17	Forni Rd	34	0	Union Mine	42	Serrano Village M4	38	0	Oak Ridge/Ponderosa
18	Gateway El Dorado	0	0	Oak Ridge	43	Serrano Village M5	20	20	Oak Ridge
19	Generations at Green Valley	165	72	Oak Ridge	44	Shinn Ranch Development	141	0	Union Mine
20	Hidden Ridge	2	2	Ponderosa	45	Sierra Sunrise	28	20	Ponderosa
21	Hutton Hills Estates Preliminary	35	0	El Dorado/Union Mine	46	Silver Springs	181	72	Ponderosa
22	KB Stone Canyon	45	24	Ponderosa	47	Starbuck Ranch	49	0	Ponderosa
23	La Canada	47	0	Oak Ridge	48	Summit Estates	41	41	Oak Ridge
24	La Cresta Woods	25	25	Oak Ridge	49	Village of Marble Valley SP	3,236	108	Ponderosa/Union Mine
25	Lime Rock Valley Specific Plan	800	108	Ponderosa	<b>Totals</b>		<b>8,266</b>	<b>1,669</b>	

Assuming that 1,669 of the 8,226 planned units are completed over a six year period, there would be an average of 278 new housing units per year.

El Dorado Union High School District							
New Development Construction							
Housing Units per Year							
	26/27	27/28	28/29	29/30	30/31	31/32	
School	Year 1	Year 2	Year 3	Year 4	Year 5	Year 6	Totals
El Dorado High	84	69	2	2	2	2	161
Oak Ridge High	51	26	46	48	95	83	349
Ponderosa High	27	30	98	191	286	299	931
Union Mine High	81	35	21	17	37	37	228
<b>High Totals</b>	<b>243</b>	<b>160</b>	<b>167</b>	<b>258</b>	<b>420</b>	<b>421</b>	<b>1,669</b>

Based on these estimated construction rates, the development will generate 22 high school students next year and a total of 150 high school students in the next six years.

**CLASSROOM COUNTS AND CAPACITY**

It is important to understand that capacity and classroom counts may be viewed different ways for different purposes. The State School Facilities Program (SFP) considers all available teaching stations excluding physical education facilities and core facilities (e.g., libraries, multipurpose rooms, and administrative spaces), as part of the site capacity when calculating eligibility for new construction or modernization funding. The State also has its own loading standards per classroom as part of the eligibility determinations.

Another method for calculating capacity and number of classrooms is based on local District standards of class size and a definition of what is considered a full day teaching station. The District may set aside several classroom spaces defined by the SFP for specialized programs or pull-out spaces.

The classroom counts and capacities defined in this Demographics and Enrollment Projections Study represent the rooms that have been identified by El Dorado Union High School District administration as designated fulltime teaching stations. This count is a net count and may not take into consideration other rooms which could be used as fulltime teaching stations but are needed for other programs offered by the District.

The classroom counts are shown for each school and are used to determine the capacity. The classroom counts represent the rooms that can be used for teaching purposes at each school site. The classroom counts may not represent the current classrooms being used, as there may be unused rooms on the school site. In some cases, there may be fewer classrooms counted than current teaching stations if some of the rooms being used were designed for other purposes but are currently being used as classrooms due to overcrowding.

**SCHOOL PROJECTIONS**

This Study provides a detailed analysis of student attendance patterns and enrollment for each school. This includes a boundary map illustrating that particular school's attendance patterns along with a chart showing the projected enrollment for the next six years. These charts indicate the actual enrollment at each school over the past four years along with the projected enrollment for the next six years. In addition, the number of students living in the boundary are shown for the same time period. If there are more students attending than live in the area, then there is a net inflow. If more students live in the boundary than attend the school, then there is a net outflow.

The current capacity is shown on these charts to identify if there will be classroom space available for the students. If space is not available, then the attendance patterns will likely need to change if the additional facilities are not provided. The capacity for each school was determined by using the following loading standards for each classroom identified:

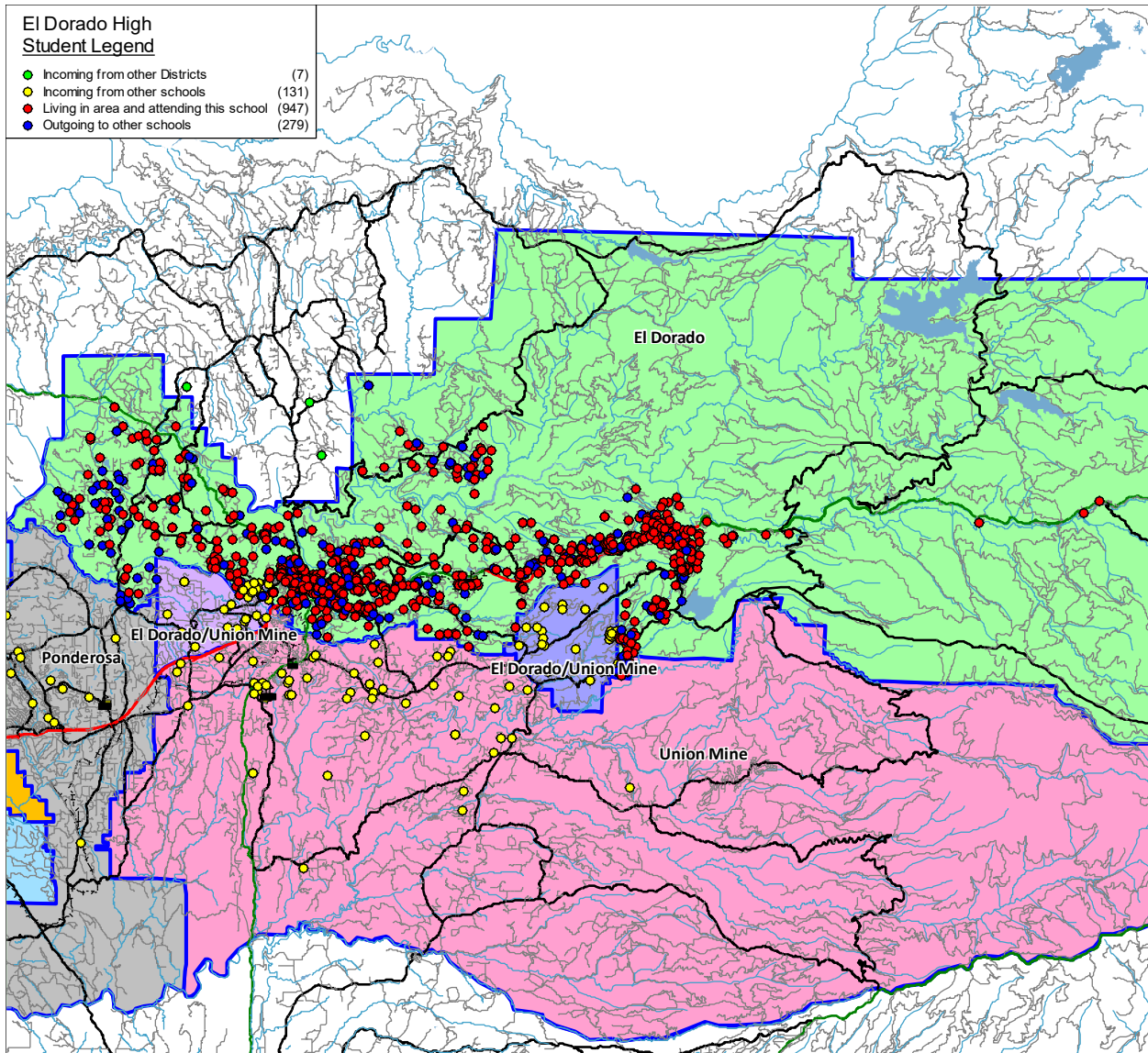
<u>Grade</u>	<u>Loading Standard</u>	<u>Grade</u>	<u>Loading Standard</u>
9-12	27.5	SVA	22
CHS	25	CDC	12

These loading standards are based on the current loading factors used this year and may change based on the level of funding for schools in the future.

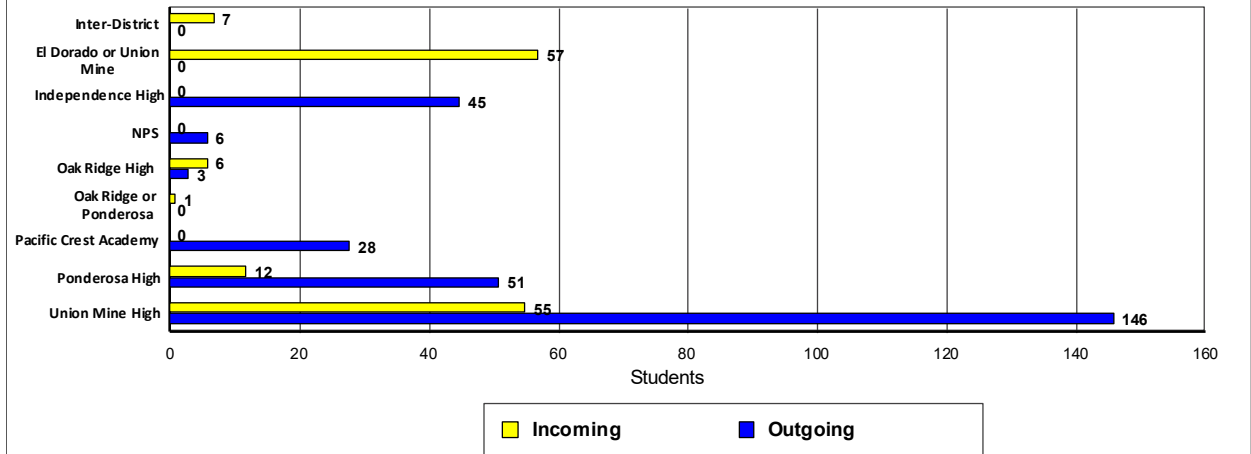
Detailed data is provided below each projection chart that shows the projected enrollment by grade for the next six years.

The Attendance Factors were determined by analyzing the current year of students to see how many Inter- and Intra-District transfers there are. Once the baseline projections are calculated for the residents in the attendance area, the Intra-District and Inter-District factors are applied to determine the projected enrollment for each school.

# El Dorado Union High School District 2025/26 Demographics and Enrollment Projections



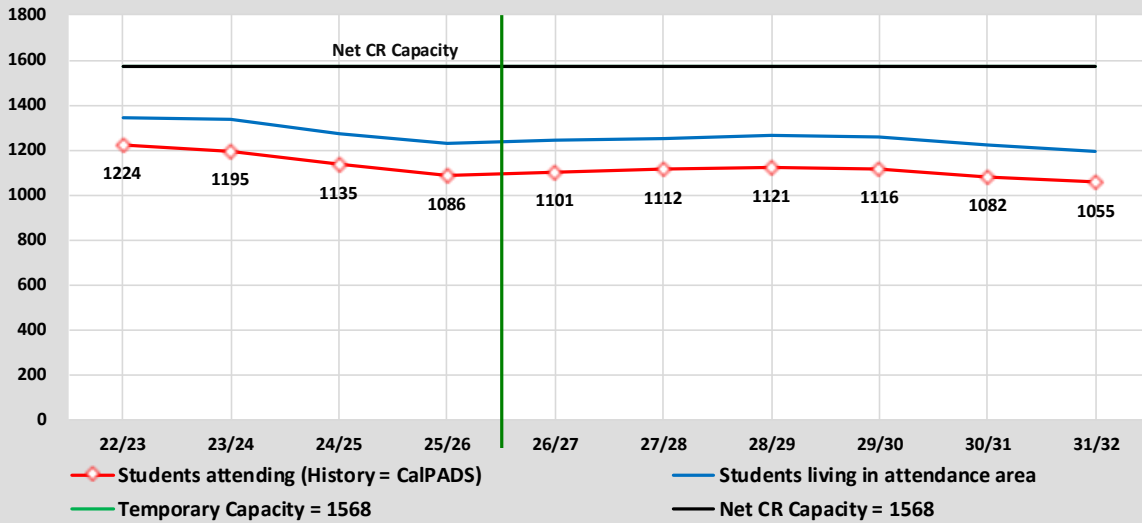
**El Dorado High  
Transfer Students**



# El Dorado Union High School District

## 2025/26 Demographics and Enrollment Projections

### Capacity & Projected Enrollment El Dorado High



District Loading Standards  
 Traditional School  
 All Portables Loaded  
 Net Classroom Count = 57  
 Grades Served = 9 - 12

### Classroom Needs Timeline

Year	Total Students*	Annual Change	Spec. Ed. Students	Net CR Capacity	New Seats Needed	Annual CR Needed	Total CR's Needed	Available Seats	Projected Housing Units
25/26	1086	-49	0	1568	0	0	-18	482	
26/27	1101	15	0	1568	0	0	-17	467	84
27/28	1112	11	0	1568	0	0	-17	456	69
28/29	1121	9	0	1568	0	0	-16	447	2
29/30	1116	-5	0	1568	0	0	-16	452	2
30/31	1082	-34	0	1568	0	0	-18	486	2
31/32	1055	-27	0	1568	0	0	-19	513	2

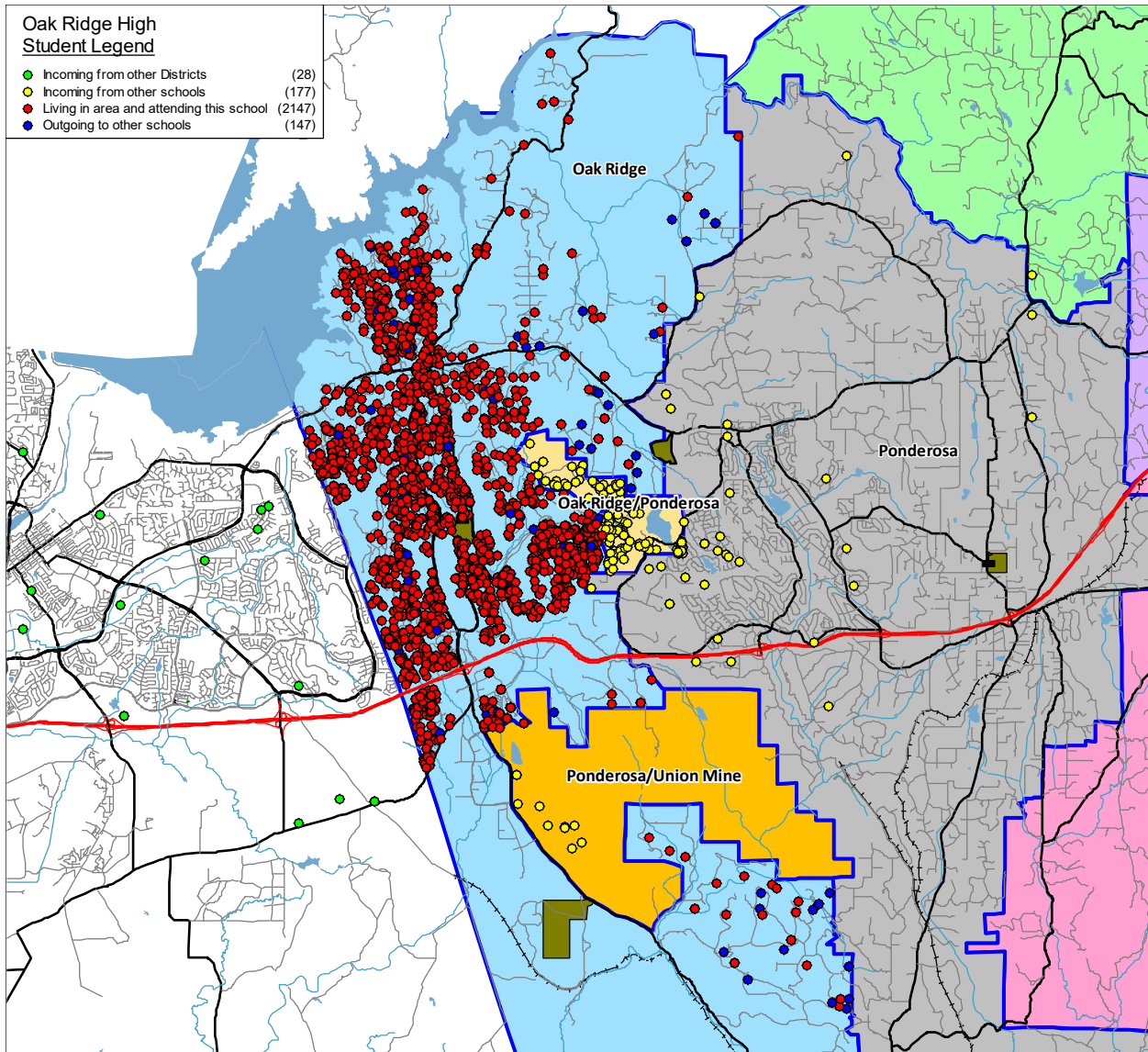
\* Based on Students Attending (Squares on Graph)  
 Net Classroom Count = 57

### El Dorado High

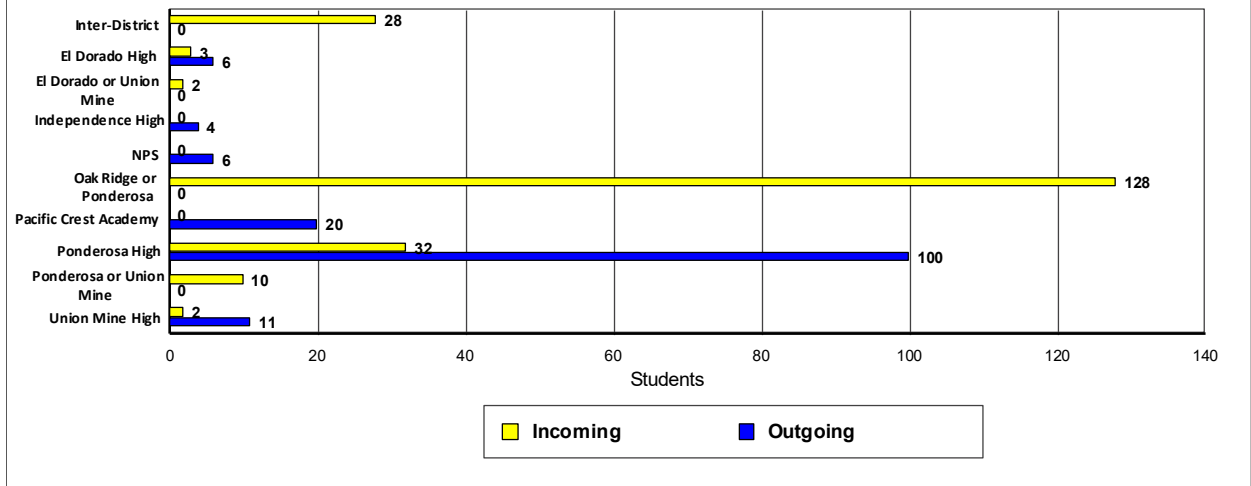
YEAR: Grade	Current	Projected Enrollment						Cohort Average	Attendance Factors	
	25/26	26/27	27/28	28/29	29/30	30/31	31/32		Intra	Inter
9	274	288	277	278	272	255	250	8	-41	3
10	281	291	304	292	293	287	270	1	-25	1
11	250	251	260	272	260	261	255	-8	-49	1
12	281	271	271	279	291	279	280	2	-33	2
<b>Totals</b>	<b>1086</b>	<b>1101</b>	<b>1112</b>	<b>1121</b>	<b>1116</b>	<b>1082</b>	<b>1055</b>	<b>0.8</b>	<b>-148</b>	<b>7</b>

# El Dorado Union High School District

## 2025/26 Demographics and Enrollment Projections



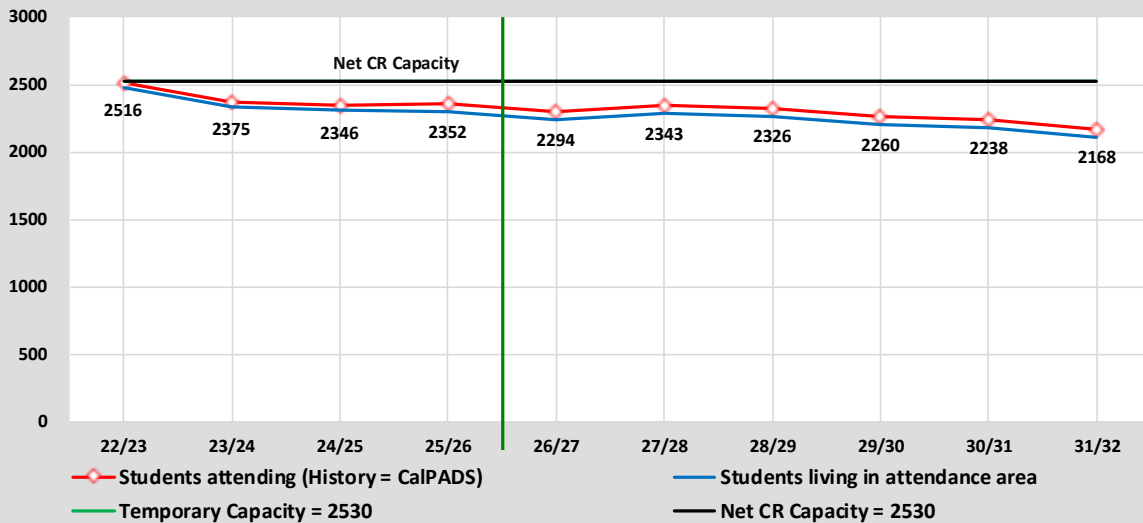
**Oak Ridge High**  
Transfer Students



# El Dorado Union High School District

## 2025/26 Demographics and Enrollment Projections

### Capacity & Projected Enrollment Oak Ridge High



District Loading Standards  
 Traditional School  
 All Portables Loaded  
 Net Classroom Count = 92  
 Grades Served = 9 - 12

### Classroom Needs Timeline

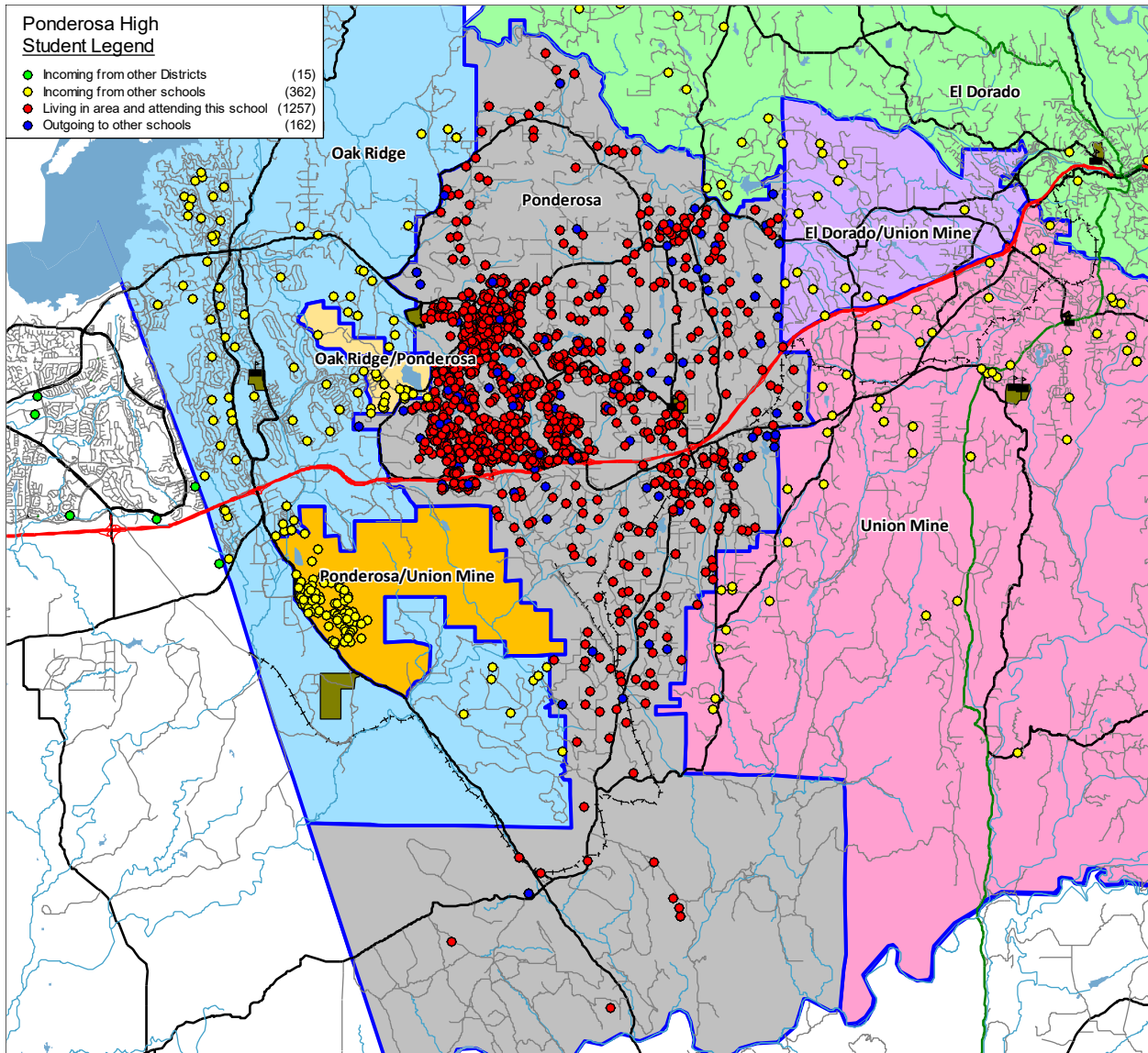
Year	Total Students*	Annual Change	Spec. Ed. Students	Net CR Capacity	New Seats Needed	Annual CR Needed	Total CR's Needed	Available Seats	Projected Housing Units
25/26	2352	6	0	2530	0	0	-6	178	
26/27	2294	-58	0	2530	0	0	-9	236	51
27/28	2343	49	0	2530	0	0	-7	187	26
28/29	2326	-17	0	2530	0	0	-7	204	46
29/30	2260	-66	0	2530	0	0	-10	270	48
30/31	2238	-22	0	2530	0	0	-11	292	95
31/32	2168	-70	0	2530	0	0	-13	362	83

\* Based on Students Attending (Squares on Graph)  
 Net Classroom Count = 92

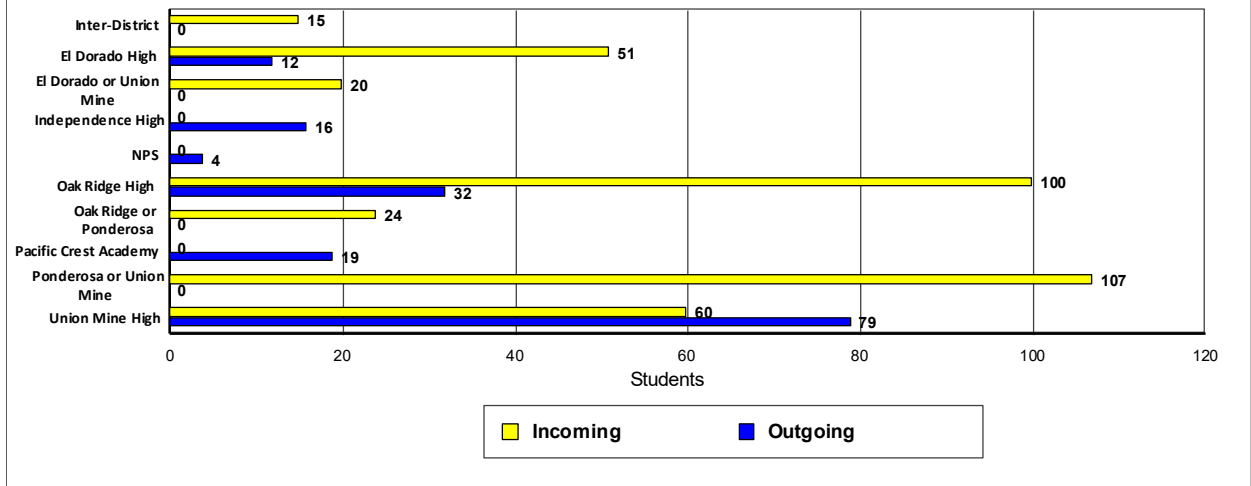
### Oak Ridge High

YEAR: Grade	Current	Projected Enrollment						Cohort Average	Attendance Factors	
	25/26	26/27	27/28	28/29	29/30	30/31	31/32		Intra	Inter
9	636	558	589	593	569	532	517	39	17	5
10	604	629	550	582	586	563	526	-2	10	9
11	518	592	616	538	570	575	552	-2	5	6
12	594	515	588	613	535	568	573	4	-2	8
<b>Totals</b>	<b>2352</b>	<b>2294</b>	<b>2343</b>	<b>2326</b>	<b>2260</b>	<b>2238</b>	<b>2168</b>	<b>9.8</b>	<b>30</b>	<b>28</b>

# El Dorado Union High School District 2025/26 Demographics and Enrollment Projections

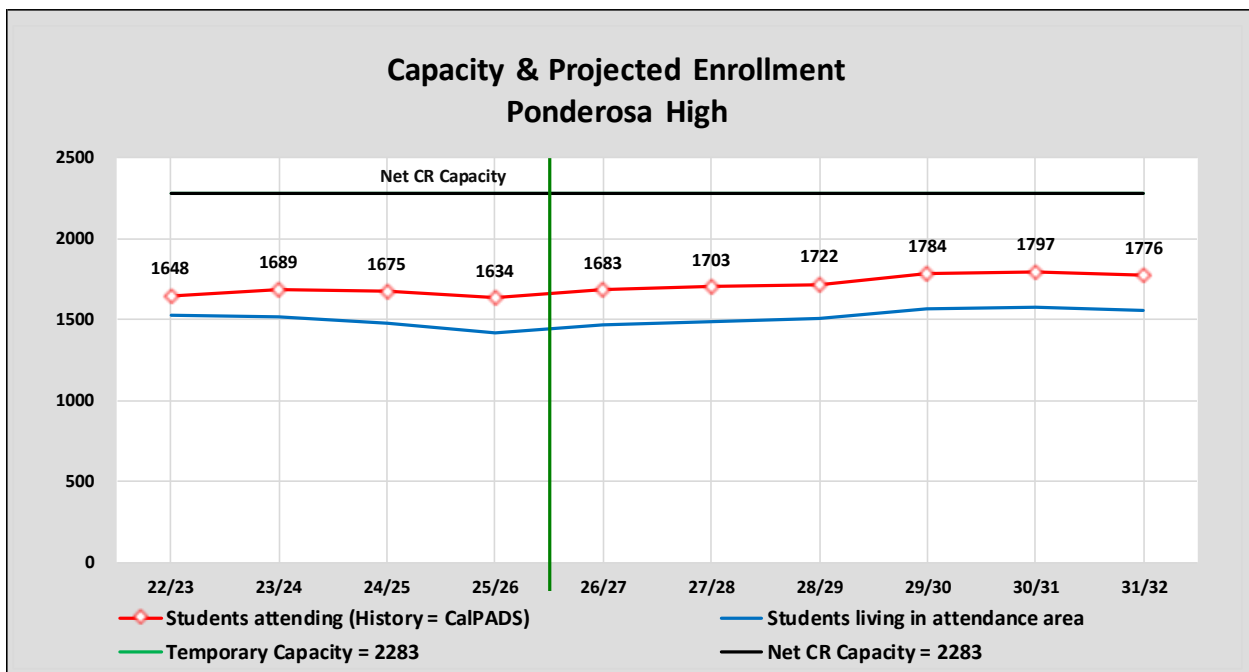


**Ponderosa High  
Transfer Students**



# El Dorado Union High School District

## 2025/26 Demographics and Enrollment Projections



**District Loading Standards**  
 Traditional School  
 All Portables Loaded  
 Net Classroom Count = 83  
 Grades Served = 9 - 12

### Classroom Needs Timeline

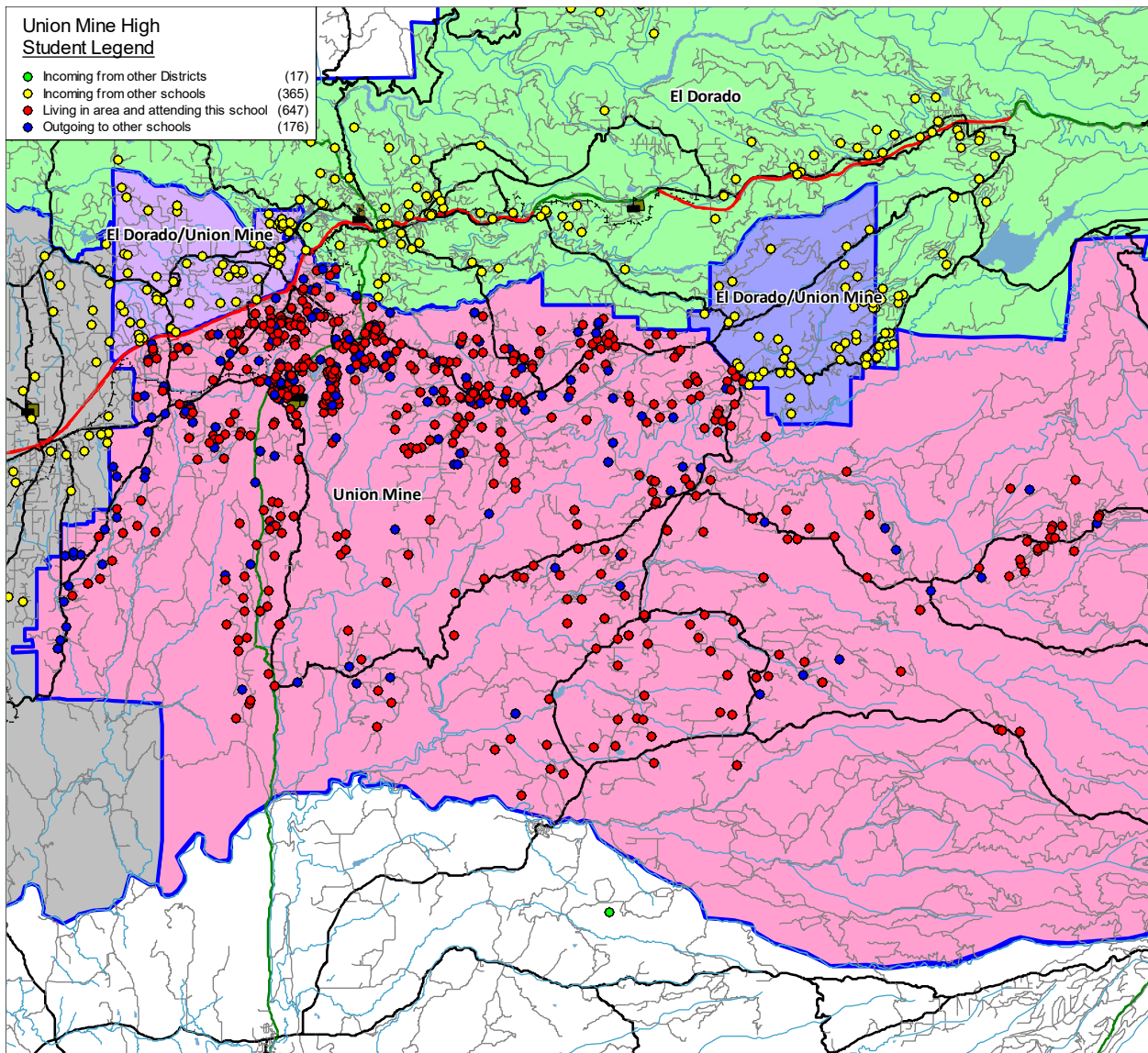
Year	Total Students*	Annual Change	Spec. Ed. Students	Net CR Capacity	New Seats Needed	Annual CR Needed	Total CR's Needed	Available Seats	Projected Housing Units
25/26	1634	-41	0	2283	0	0	-24	649	
26/27	1683	49	0	2283	0	0	-22	600	27
27/28	1703	20	0	2283	0	0	-21	580	30
28/29	1722	19	0	2283	0	0	-20	561	98
29/30	1784	62	0	2283	0	0	-18	499	191
30/31	1797	13	0	2283	0	0	-18	486	286
31/32	1776	-21	0	2283	0	0	-18	507	299

\* Based on Students Attending (Squares on Graph)  
 Net Classroom Count = 83

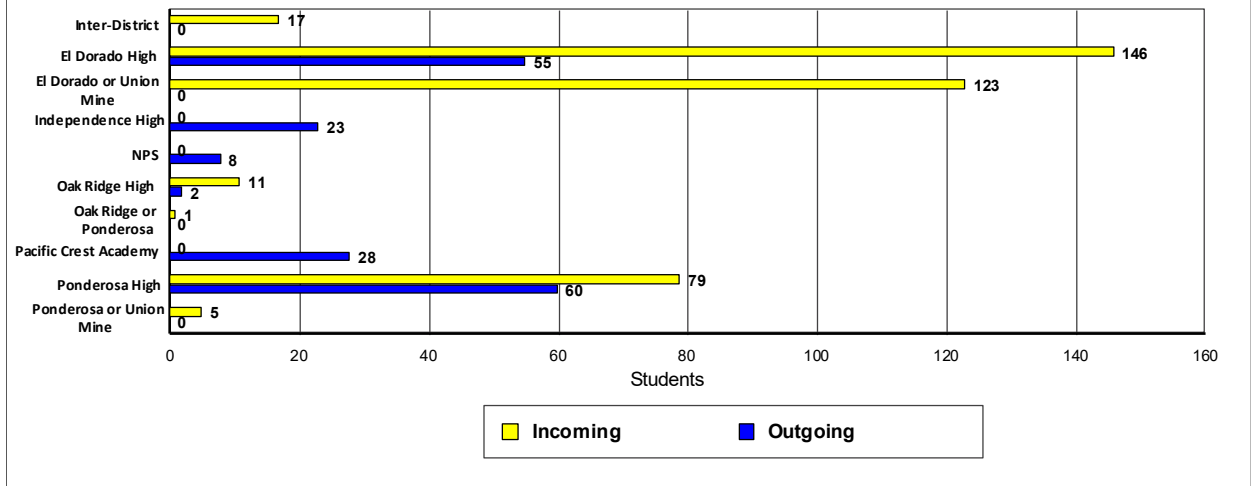
Ponderosa High										
YEAR: Grade	Current	Projected Enrollment						Cohort Average	Attendance Factors	
	25/26	26/27	27/28	28/29	29/30	30/31	31/32		Intra	Inter
9	426	473	477	459	480	475	449	28	76	3
10	408	391	438	443	427	450	445	-3	44	4
11	423	409	392	440	447	433	457	-4	50	4
12	377	410	396	380	430	439	425	8	30	4
<b>Totals</b>	<b>1634</b>	<b>1683</b>	<b>1703</b>	<b>1722</b>	<b>1784</b>	<b>1797</b>	<b>1776</b>	<b>7.3</b>	<b>200</b>	<b>15</b>

# El Dorado Union High School District

## 2025/26 Demographics and Enrollment Projections



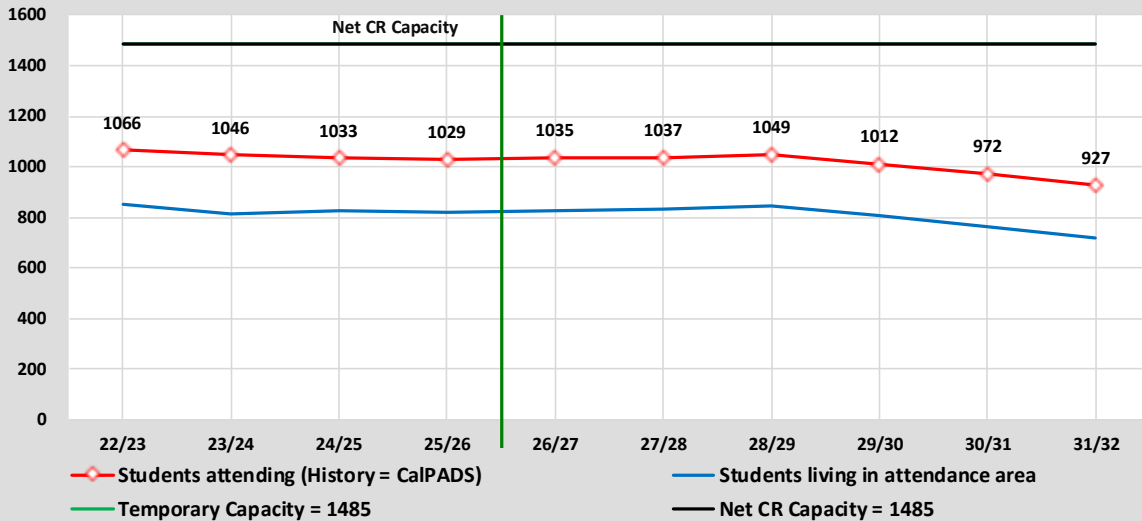
**Union Mine High**  
Transfer Students



# El Dorado Union High School District

## 2025/26 Demographics and Enrollment Projections

### Capacity & Projected Enrollment Union Mine High



District Loading Standards  
 Traditional School  
 All Portables Loaded  
 Net Classroom Count = 54  
 Grades Served = 9 - 12

### Classroom Needs Timeline

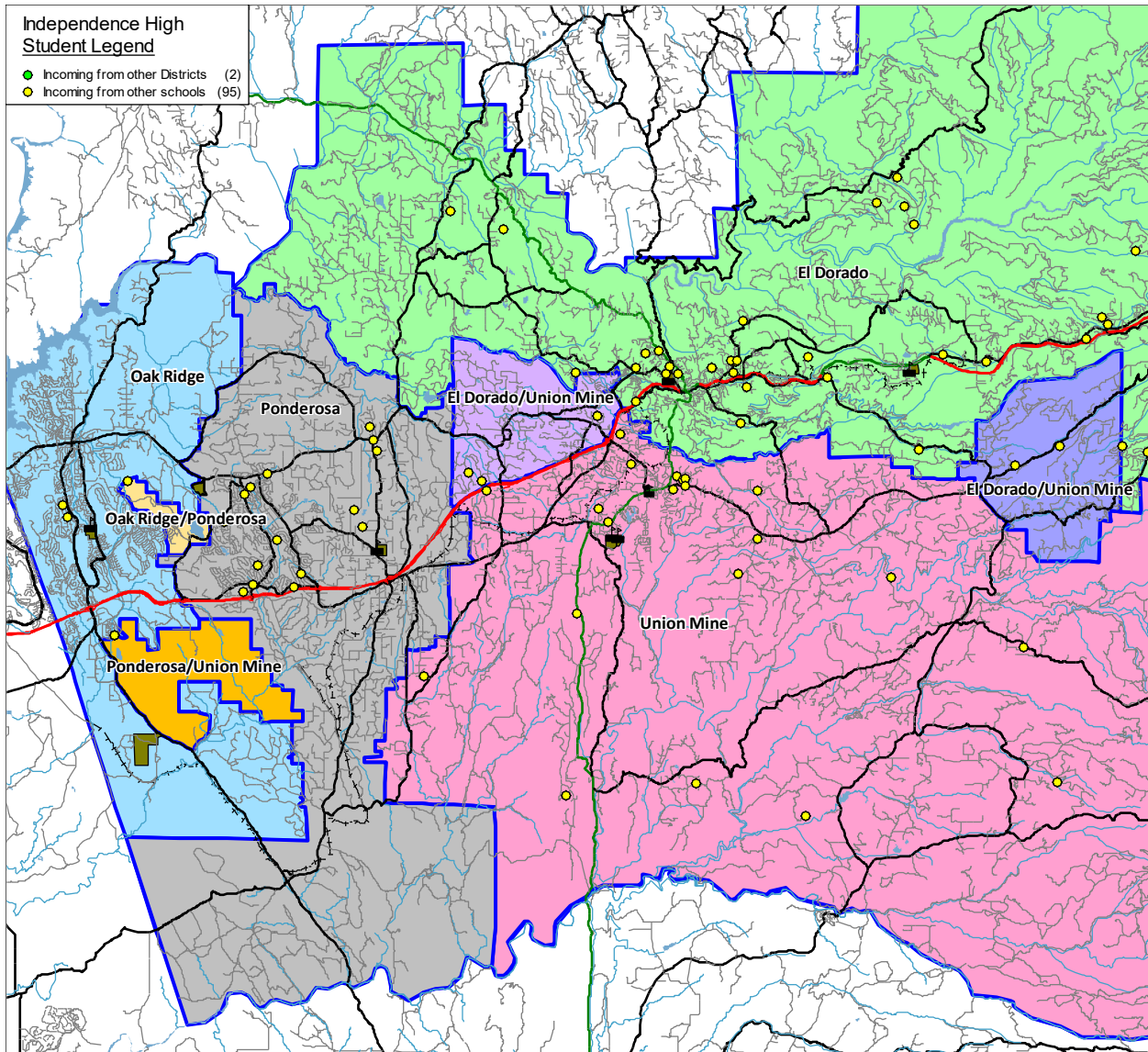
Year	Total Students*	Annual Change	Spec. Ed. Students	Net CR Capacity	New Seats Needed	Annual CR Needed	Total CR's Needed	Available Seats	Projected Housing Units
25/26	1029	-4	0	1485	0	0	-17	456	
26/27	1035	6	0	1485	0	0	-16	450	81
27/28	1037	2	0	1485	0	0	-16	448	35
28/29	1049	12	0	1485	0	0	-16	436	21
29/30	1012	-37	0	1485	0	0	-17	473	17
30/31	972	-40	0	1485	0	0	-19	513	37
31/32	927	-45	0	1485	0	0	-20	558	37

\* Based on Students Attending (Squares on Graph)  
 Net Classroom Count = 54

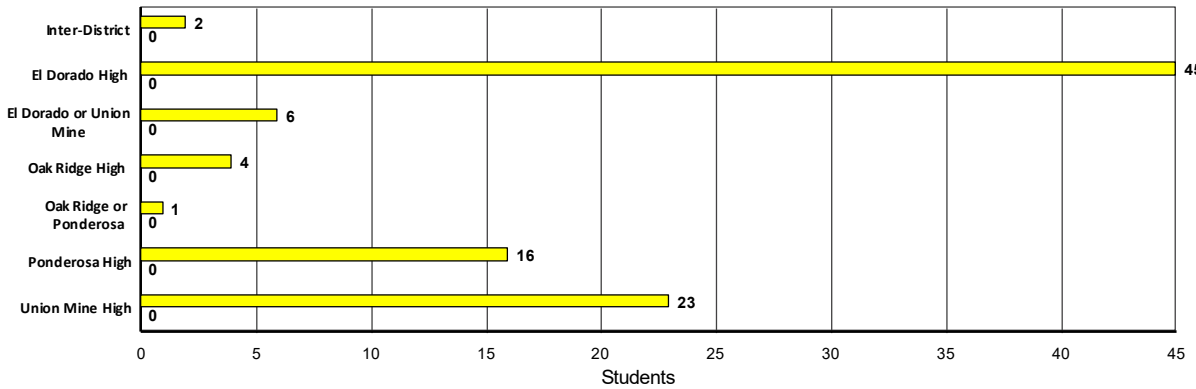
### Union Mine High

YEAR: Grade	Current	Projected Enrollment						Cohort Average	Attendance Factors	
	25/26	26/27	27/28	28/29	29/30	30/31	31/32		Intra	Inter
9	278	277	275	271	245	235	228	25	60	5
10	258	281	279	276	272	247	237	1	62	3
11	255	240	262	259	256	253	228	-3	42	6
12	238	237	221	243	239	237	234	0	25	3
<b>Totals</b>	<b>1029</b>	<b>1035</b>	<b>1037</b>	<b>1049</b>	<b>1012</b>	<b>972</b>	<b>927</b>	<b>5.8</b>	<b>189</b>	<b>17</b>

# El Dorado Union High School District 2025/26 Demographics and Enrollment Projections



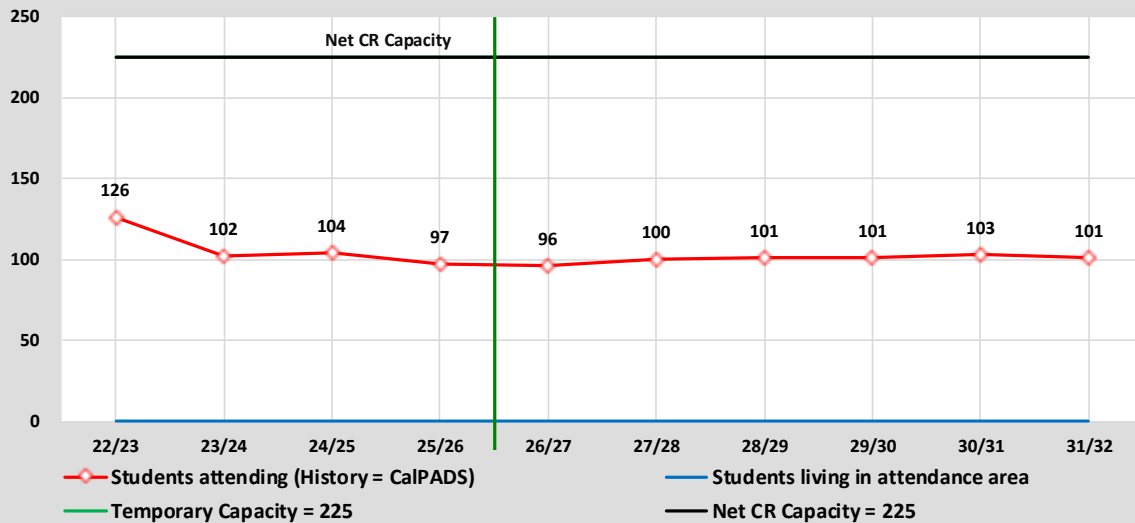
**Independence High**  
Transfer Students



# El Dorado Union High School District

## 2025/26 Demographics and Enrollment Projections

### Capacity & Projected Enrollment Independence High



District Loading Standards  
 Traditional School  
 All Portables Loaded  
 Net Classroom Count = 9  
 Grades Served = 9 - 12

### Classroom Needs Timeline

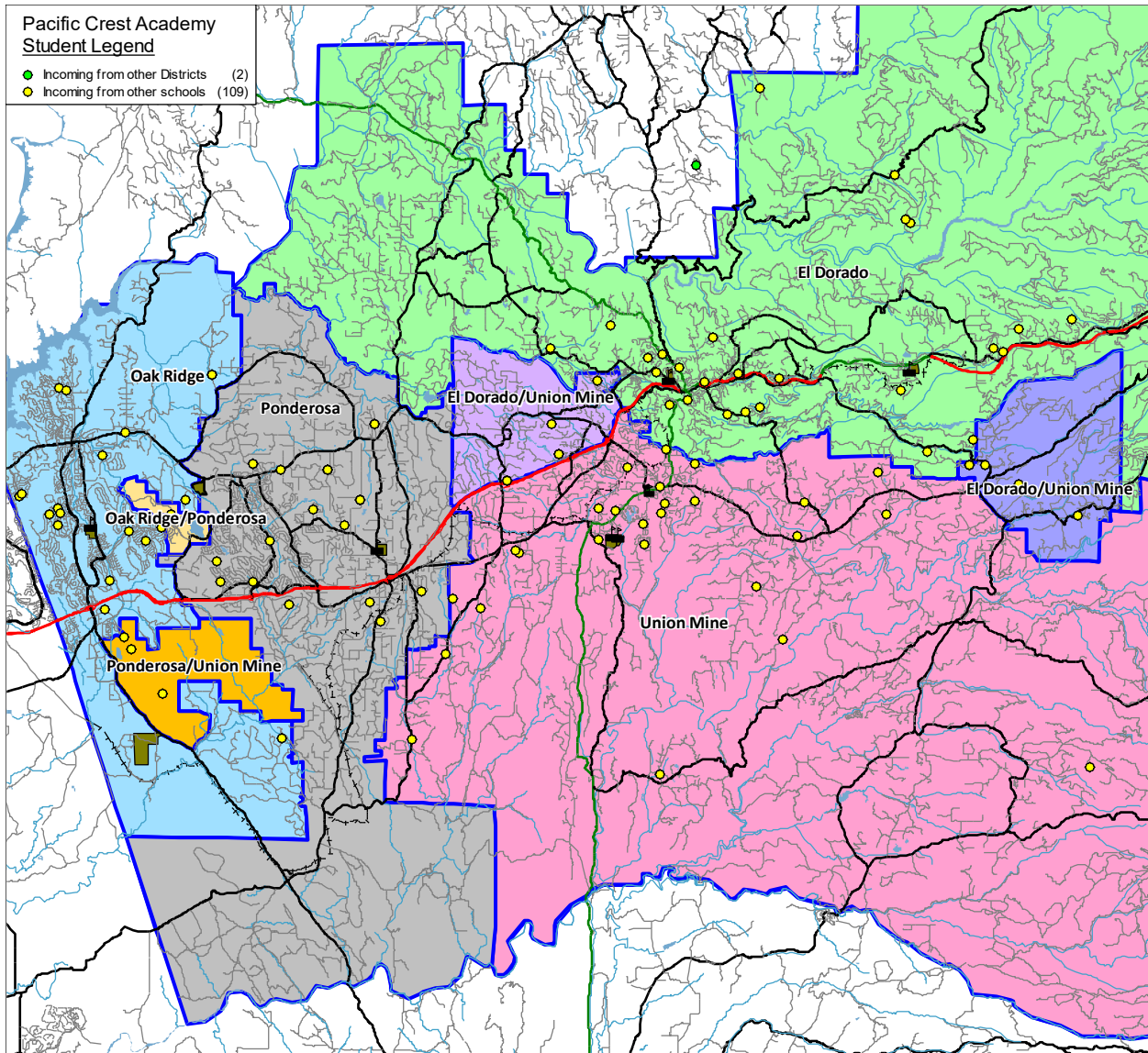
Year	Total Students*	Annual Change	Spec. Ed. Students	Net CR Capacity	New Seats Needed	Annual CR Needed	Total CR's Needed	Available Seats	Projected Housing Units
25/26	97	-7	0	225	0	0	-5	128	
26/27	96	-1	0	225	0	0	-5	129	243
27/28	100	4	0	225	0	0	-5	125	160
28/29	101	1	0	225	0	0	-5	124	167
29/30	101	0	0	225	0	0	-5	124	258
30/31	103	2	0	225	0	0	-5	122	420
31/32	101	-2	0	225	0	0	-5	124	421

\* Based on Students Attending (Squares on Graph)  
 Net Classroom Count = 9

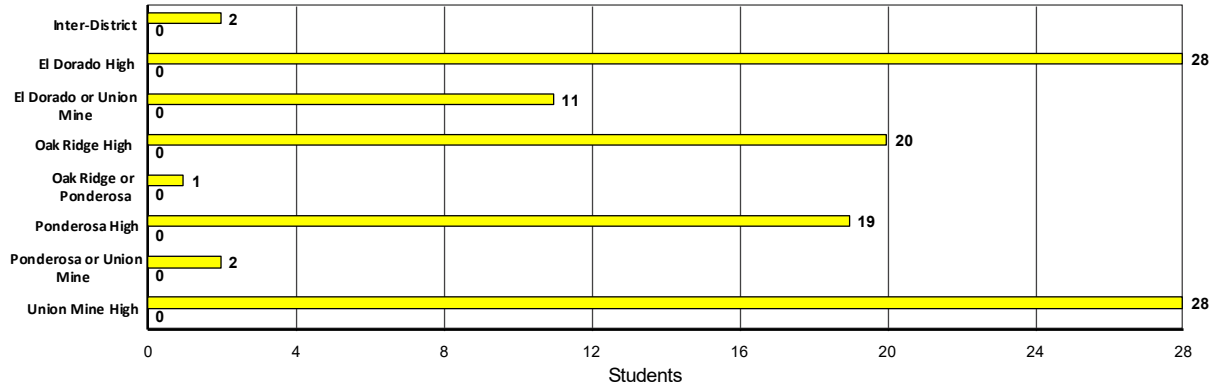
### Independence High

YEAR: Grade	Current	Projected Enrollment						Cohort Average	Attendance Factors	
	25/26	26/27	27/28	28/29	29/30	30/31	31/32		Intra	Inter
11	40	41	43	42	43	43	42	-17	40	0
12	57	55	57	59	58	60	59	16	55	2
<b>Totals</b>	<b>97</b>	<b>96</b>	<b>100</b>	<b>101</b>	<b>101</b>	<b>103</b>	<b>101</b>	<b>-0.5</b>	<b>95</b>	<b>2</b>

# El Dorado Union High School District 2025/26 Demographics and Enrollment Projections



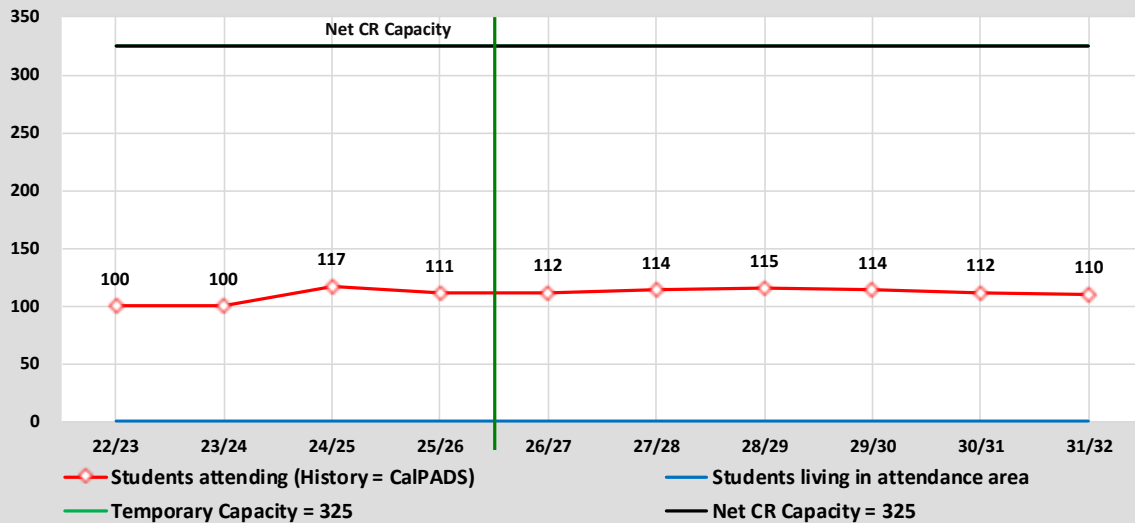
**Pacific Crest Academy**  
Transfer Students



# El Dorado Union High School District

## 2025/26 Demographics and Enrollment Projections

### Capacity & Projected Enrollment Pacific Crest Academy



District Loading Standards  
 Traditional School  
 All Portables Loaded  
 Net Classroom Count = 13  
 Grades Served = 9 - 12

### Classroom Needs Timeline

Year	Total Students*	Annual Change	Spec. Ed. Students	Net CR Capacity	New Seats Needed	Annual CR Needed	Total CR's Needed	Available Seats	Projected Housing Units
25/26	111	-6	0	325	0	0	-9	214	
26/27	112	1	0	325	0	0	-9	213	243
27/28	114	2	0	325	0	0	-8	211	160
28/29	115	1	0	325	0	0	-8	210	167
29/30	114	-1	0	325	0	0	-8	211	258
30/31	112	-2	0	325	0	0	-9	213	420
31/32	110	-2	0	325	0	0	-9	215	421

\* Based on Students Attending (Squares on Graph)  
 Net Classroom Count = 13

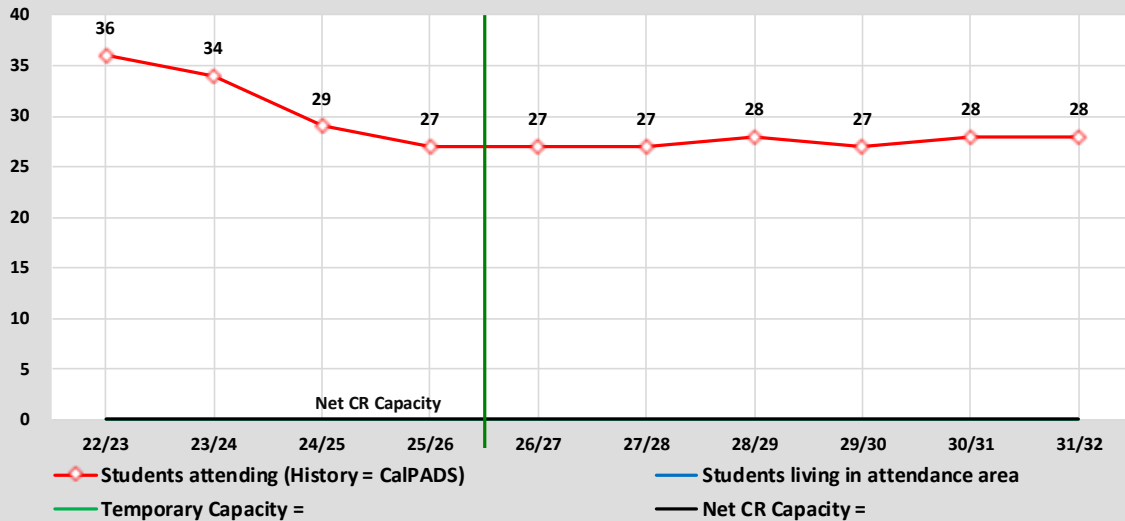
### Pacific Crest Academy

YEAR: Grade	Current	Projected Enrollment						Cohort Average	Attendance Factors	
	25/26	26/27	27/28	28/29	29/30	30/31	31/32		Intra	Inter
9	27	27	27	27	26	25	25	106	26	1
10	27	28	28	28	28	27	26	-4	27	0
11	30	31	32	32	32	32	31	-17	30	0
12	27	26	27	28	28	28	28	16	26	1
<b>Totals</b>	<b>111</b>	<b>112</b>	<b>114</b>	<b>115</b>	<b>114</b>	<b>112</b>	<b>110</b>	<b>25.3</b>	<b>109</b>	<b>2</b>

# El Dorado Union High School District

## 2025/26 Demographics and Enrollment Projections

### Capacity & Projected Enrollment Non Public School



District Loading Standards  
 Traditional School  
 All Portables Loaded  
 Net Classroom Count =  
 Grades Served = 9 - 12

### Classroom Needs Timeline

Year	Total Students*	Annual Change	Spec. Ed. Students	Net CR Capacity	New Seats Needed	Annual CR Needed	Total CR's Needed	Available Seats	Projected Housing Units
25/26	27	-2	0	0	27	1	1	0	
26/27	27	0	0	0	27	0	1	0	243
27/28	27	0	0	0	27	0	1	0	160
28/29	28	1	0	0	28	0	1	0	167
29/30	27	-1	0	0	27	0	1	0	258
30/31	28	1	0	0	28	0	1	0	420
31/32	28	0	0	0	28	0	1	0	421

\* Based on Students Attending (Squares on Graph)  
 Net Classroom Count = 0

### Non Public School

YEAR: Grade	Current	Projected Enrollment						Cohort Average	Attendance Factors	
	25/26	26/27	27/28	28/29	29/30	30/31	31/32		Intra	Inter
9	2	2	2	2	2	2	2	106	2	0
10	6	6	6	6	6	6	6	-4	6	0
11	5	5	5	5	5	5	5	-17	5	0
12	14	14	14	15	14	15	15	16	14	0
<b>Totals</b>	<b>27</b>	<b>27</b>	<b>27</b>	<b>28</b>	<b>27</b>	<b>28</b>	<b>28</b>	<b>25.3</b>	<b>27</b>	<b>0</b>

# El Dorado Union High School District

## 2025/26 Demographics and Enrollment Projections

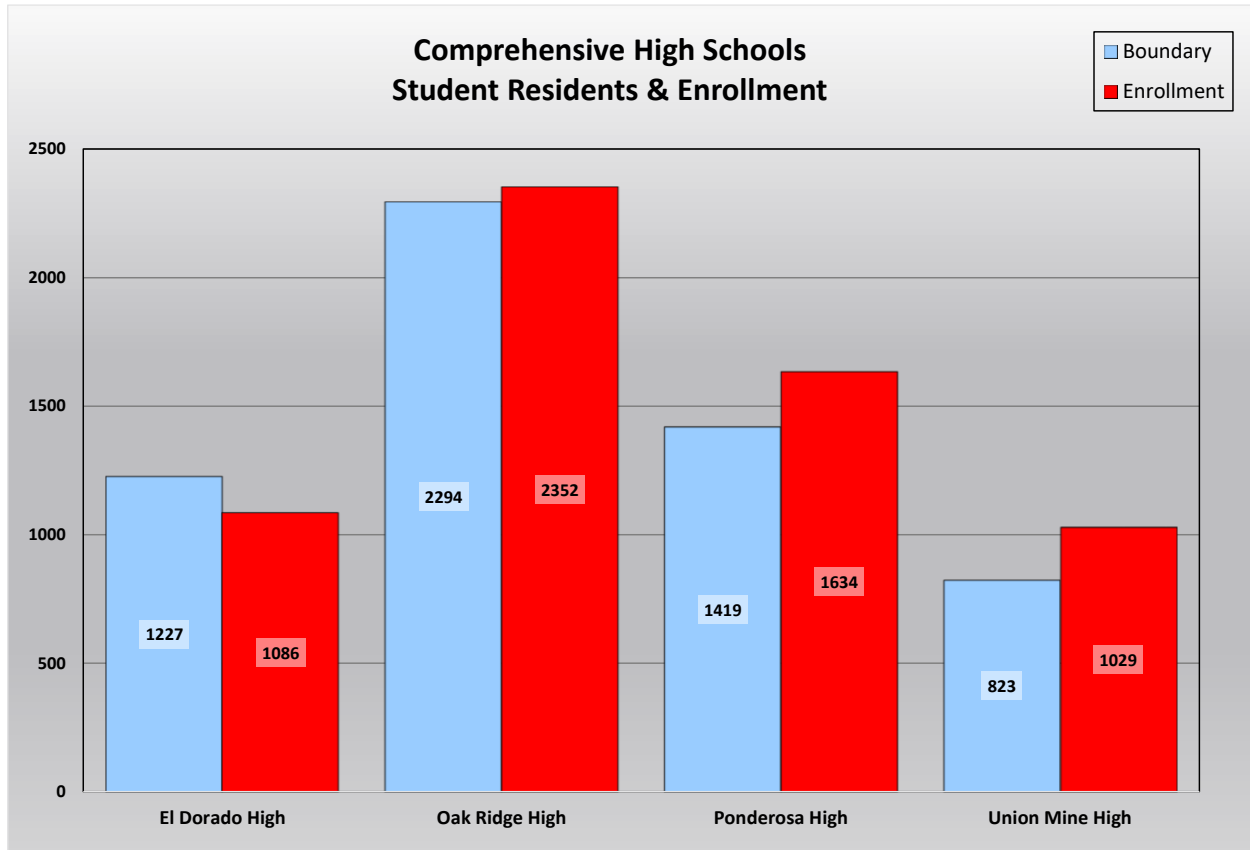
### Student Attendance Matrix

ATTENDANCE MATRIX									
SCHOOL: AREA		SCHOOL OF ATTENDANCE						Total Residing	
		El Dorado High	Oak Ridge High	Ponderosa High	Union Mine High	Independence High	Pacific Crest Academy		Non Public School
R E S I D E N C E	Inter-District	7	28	15	17	2	2	0	71
	El Dorado High	947	3	51	146	45	28	6	1,226
	Oak Ridge High	6	2,147	100	11	4	20	6	2,294
	Ponderosa High	12	32	1,257	79	16	19	4	1,419
	Union Mine High	55	2	60	647	23	28	8	823
	El Dorado or Union Mine	57	2	20	123	6	11	2	221
	Oak Ridge or Ponderosa	1	128	24	1	1	1	0	156
	Ponderosa or Union Mine	0	10	107	5	0	2	1	125
	Correction Factor*	1	0	0	0	0	0	0	1
	<b>Total Attending</b>	<b>1,086</b>	<b>2,352</b>	<b>1,634</b>	<b>1,029</b>	<b>97</b>	<b>111</b>	<b>27</b>	<b>6,336</b>
<b>Intra-Ins</b>		131	177	362	365	95	109	27	1,266
<b>Inter-Ins</b>		7	28	15	17	2	2	0	71
<b>Total In-Flow</b>		<b>138</b>	<b>205</b>	<b>377</b>	<b>382</b>	<b>97</b>	<b>111</b>	<b>27</b>	<b>1,337</b>
<b>Intra-Outs</b>		279	147	162	176	0	0	0	764
<b>Net Transfers</b>		-141	58	215	206	97	111	27	573
<b>% In-Flow Students</b>		<b>12.7%</b>	<b>8.7%</b>	<b>23.1%</b>	<b>37.1%</b>				<b>21.1%</b>
<b>% Out-Flow Students</b>		<b>22.8%</b>	<b>6.4%</b>	<b>11.4%</b>	<b>21.4%</b>				<b>12.1%</b>

\* The correction factor represents the difference between the student data download counts and the actual CalPADS counts.

This chart summarizes the transfers in and out of each school as were seen by the yellow dots and blue dots on the school attendance maps. In addition, the data has been analyzed to determine the total in-flow and out-flow rates for each school. The school with the largest in-flow rate is Union Mine High and the school with the largest out-flow rate is El Dorado High.

**Student Residency and Enrollment Comparison**



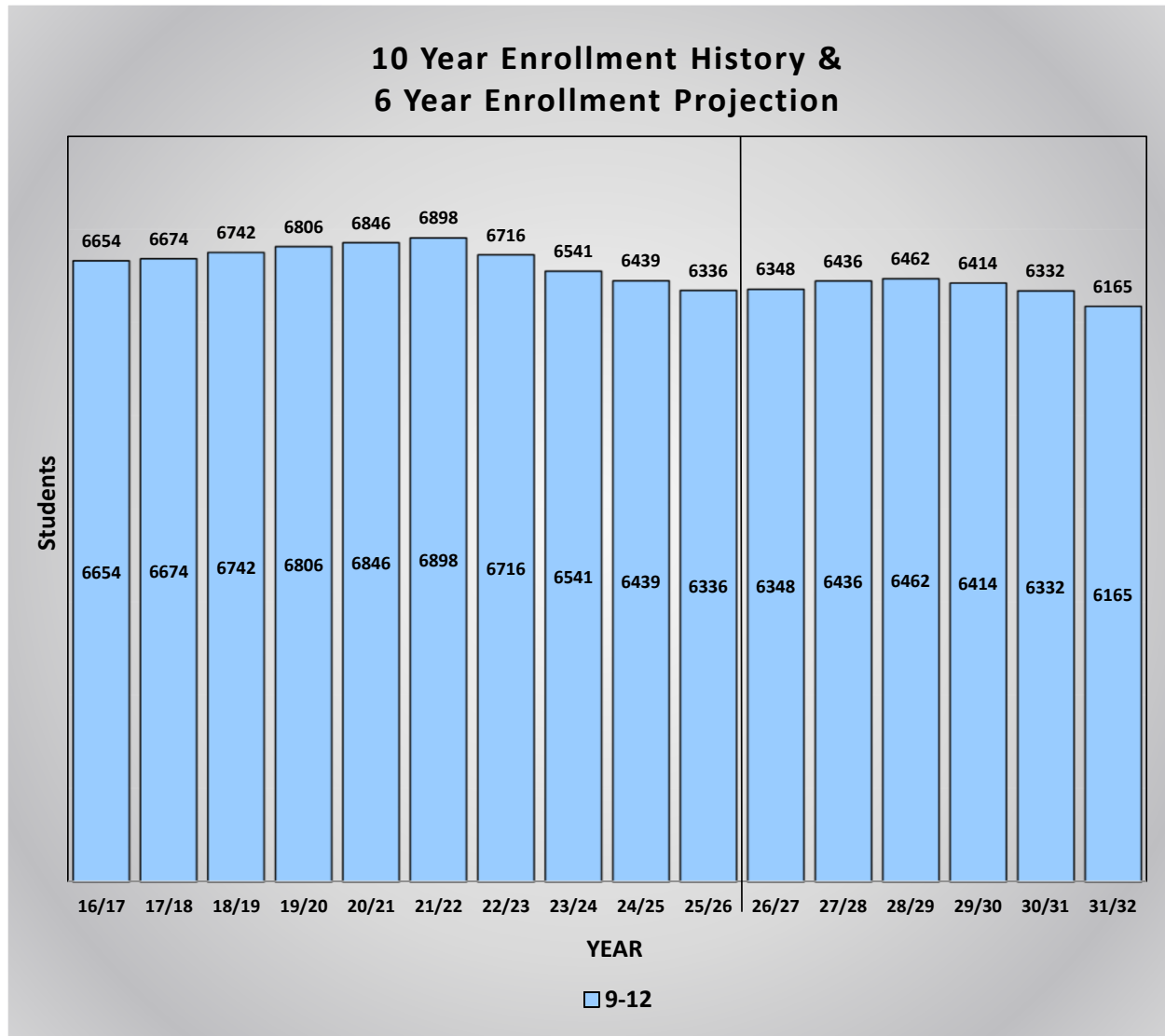
This chart compares each individual comprehensive high school enrollment to the students that reside within the school attendance boundary. Utilizing this data helps make it easy to see which schools have the largest and smallest enrollments as well as which boundaries are most populated. Schools with more students enrolled than those living in the boundary have a net transfer into the school. This is typically found at schools with special programs such as Gate or Dual Immersion, schools housing students from overcrowded or Program Improvement (PI) schools, and schools with more capacity than the student population living in the boundary. Oak Ridge has the largest enrollment of the high schools and Union Mine has the smallest enrollment. The average enrollment at the high schools is 1,525 students.

# El Dorado Union High School District

## 2025/26 Demographics and Enrollment Projections

### Ten Year Enrollment History and Six Year Enrollment Projections

This graph shows a summary of the projections for the entire District. It shows the current enrollment for 2025/26, the historic enrollment for the past nine years, and the projected enrollment for the next six years. The end result is a total of 6,165 students in the District in 2031/32.



The El Dorado Union High School District grew in enrollment from an enrollment of 6,654 students during the 2016/17 school year to a peak enrollment of 6,898 in 2021/22 and has since been declining to a current enrollment of 6,336 students.

This graph is color coded by grade groupings:

Blue represents the historic and projected enrollment for high school grades 9-12.

The entire District enrollment is shown at the top of each bar.

# El Dorado Union High School District

## 2025/26 Demographics and Enrollment Projections

### Enrollment Projection Summary by Grade

The chart below shows three years of historic enrollment, the current enrollment, and six years of projected enrollment by grade.

El Dorado Union High School District Enrollment Projection Summary by Grade										
Grade	Historic Enrollment			Current Enrollment			Projected Enrollment			
	<u>22/23</u>	<u>23/24</u>	<u>24/25</u>	<u>25/26</u>	<u>26/27</u>	<u>27/28</u>	<u>28/29</u>	<u>29/30</u>	<u>30/31</u>	<u>31/32</u>
9	1,609	1,525	1,590	1,643	1,625	1,647	1,630	1,594	1,524	1,471
10	1,704	1,597	1,538	1,584	1,626	1,605	1,627	1,612	1,580	1,510
11	1,724	1,693	1,577	1,521	1,569	1,610	1,588	1,613	1,602	1,570
12	1,679	1,726	1,734	1,588	1,528	1,574	1,617	1,595	1,626	1,614
<b>Total 9-12</b>	<b>6,716</b>	<b>6,541</b>	<b>6,439</b>	<b>6,336</b>	<b>6,348</b>	<b>6,436</b>	<b>6,462</b>	<b>6,414</b>	<b>6,332</b>	<b>6,165</b>
<b>District Totals</b>	<b>6,716</b>	<b>6,541</b>	<b>6,439</b>	<b>6,336</b>	<b>6,348</b>	<b>6,436</b>	<b>6,462</b>	<b>6,414</b>	<b>6,332</b>	<b>6,165</b>

### Enrollment Projection Summary by School

The chart below shows the current enrollment and six years of projected enrollment by school.

El Dorado Union High School District Enrollment Projection Summary by School							
School	Current Enrollment						
	<u>25/26</u>	<u>26/27</u>	<u>27/28</u>	<u>28/29</u>	<u>29/30</u>	<u>30/31</u>	<u>31/32</u>
El Dorado High	1,086	1,101	1,112	1,121	1,116	1,082	1,055
Oak Ridge High	2,352	2,294	2,343	2,326	2,260	2,238	2,168
Ponderosa High	1,634	1,683	1,703	1,722	1,784	1,797	1,776
Union Mine High	1,029	1,035	1,037	1,049	1,012	972	927
<b>High Totals</b>	<b>6,101</b>	<b>6,113</b>	<b>6,195</b>	<b>6,218</b>	<b>6,172</b>	<b>6,089</b>	<b>5,926</b>
Independence High	97	96	100	101	101	103	101
Pacific Crest Academy	111	112	114	115	114	112	110
Non Public School	27	27	27	28	27	28	28
<b>Other Totals</b>	<b>235</b>	<b>235</b>	<b>241</b>	<b>244</b>	<b>242</b>	<b>243</b>	<b>239</b>
<b>District Totals</b>	<b>6,336</b>	<b>6,348</b>	<b>6,436</b>	<b>6,462</b>	<b>6,414</b>	<b>6,332</b>	<b>6,165</b>
Annual Change		12	88	26	-48	-82	-167

# El Dorado Union High School District

## 2025/26 Demographics and Enrollment Projections

### 2025/26 One Year Enrollment Projection by School and Grade

<b>El Dorado Union High School District</b>					
<b>Enrollment Projections</b>					
<b>YEAR 26/27, 1 Year Proj.</b>					
<b>School</b>	<b>9</b>	<b>10</b>	<b>11</b>	<b>12</b>	<b>TOTAL</b>
El Dorado High	288	291	251	271	1,101
Oak Ridge High	558	629	592	515	2,294
Ponderosa High	473	391	409	410	1,683
Union Mine High	277	281	240	237	1,035
Independence High	0	0	41	55	96
Pacific Crest Academy	27	28	31	26	112
Non Public School	2	6	5	14	27
<b>Totals</b>	<b>1,625</b>	<b>1,626</b>	<b>1,569</b>	<b>1,528</b>	<b>6,348</b>
Current CalPADS	1,643	1,584	1,521	1,588	6,336
<b>Net Change</b>	<b>-18</b>	<b>42</b>	<b>48</b>	<b>-60</b>	<b>12</b>
Cohort Change		-17	-15	7	

El Dorado Union High School District has a current enrollment of 6,336 students. The projected enrollment for next year shows an increase of 12 students. This one year summary analyzes the net change between the current District enrollment by school and by grade, and the projected enrollment for 2026/27.

The students living in the boundary generate the cohort factors which are calculated for the past three years and the average is determined. Those cohorts are then used to determine the students who will be residing in each attendance area for the following years. Next the attendance factor is used to determine the net enrollment for each grade. The attendance factor is determined by analyzing the current year of students to see how many Inter- and Intra-district transfers there are. The cohort change factor indicates the change in the number of students for each grade compared to the number of students in the prior grade the previous year.

These projections assume the transfers between schools remain consistent. If changes in facilities, schedules, programs or policies are made, then the patterns may be impacted.

**El Dorado Union High School District**  
**2025/26 Demographics and Enrollment Projections**

**SCHOOL FACILITY UTILIZATION**

The following chart shows the current and projected utilization rates for each school. It has been color coded with blue representing schools with a utilization rate of less than 70%, yellow representing a utilization rate of at least 70% but under 80%, green representing a utilization rate of at least 80% but under 90%, orange representing at least 90% but under 100%, and a red outline for the schools that have 100% or higher utilization. The utilization indicates the long term impacts of the changes in enrollment as compared to the school capacities.

	Net	Net CR	Current	Projected	Current	Projected
	<u>Classrooms</u>	<u>Capacity</u>	<u>Enrollment</u>	<u>Enrollment</u>	<u>Utilization</u>	<u>Utilization</u>
<u>High Schools</u>						
El Dorado High	57	1,568	1,086	1,055	69.3%	67.3%
Oak Ridge High	92	2,530	2,352	2,168	93.0%	85.7%
Ponderosa High	83	2,283	1,634	1,776	71.6%	77.8%
Union Mine High	54	1,485	1,029	927	69.3%	62.4%
<b>Sub-Totals</b>	<b>286</b>	<b>7,866</b>	<b>6,101</b>	<b>5,926</b>	<b>77.6%</b>	<b>75.3%</b>
<u>Other Schools</u>						
Independence High	9	225	97	101		
Pacific Crest Academy	13	325	111	110		
Non Public School	0	0	27	28		
<b>Sub-Totals</b>	<b>22</b>	<b>550</b>	<b>235</b>	<b>239</b>		
<b>District Totals</b>	<b>308</b>	<b>8,416</b>	<b>6,336</b>	<b>6,165</b>	<b>75.3%</b>	<b>73.3%</b>

For 2025, the schools with the highest percentage of available space are El Dorado High and Union Mine High and the school that is impacted the most is Oak Ridge High.

# El Dorado Union High School District

## 2025/26 Demographics and Enrollment Projections

The color-coded map below shows the projected utilization for the high schools.

