

COMMUNITY SURVEY

WORKFORCE HOUSING

Twin Rivers Proposed Workforce Housing Project

Twin Rivers Unified School District (TRUSD) is exploring a workforce housing project to support the hiring and retention of qualified educators. With the high cost of living in our area, it is increasingly difficult for the profession's best and brightest educators to live in the communities where they work. Exploring workforce housing is just one of several strategies TRUSD is implementing to:

01 **Attract and retain** exceptional faculty and staff who can live closer to work.

02 **Provide below-market-rate rental options,** helping teachers save and be better positioned for future homeownership.

03 **Enhance community ties** by enabling employees to reside near their workplace.

Scan me to take the survey

We Want to Hear From You!

As a neighbor of the proposed development, **your feedback is essential.** Please take a few moments to share your input by taking our **community survey.** Please scan the QR code to share your feedback.



Scan me to visit our website

Questions?

TRUSD is committed to keeping our neighbors and school community informed throughout the process. Please **visit our dedicated website** to learn more, stay up to date on the proposed project timeline, milestones, and community engagement opportunities.



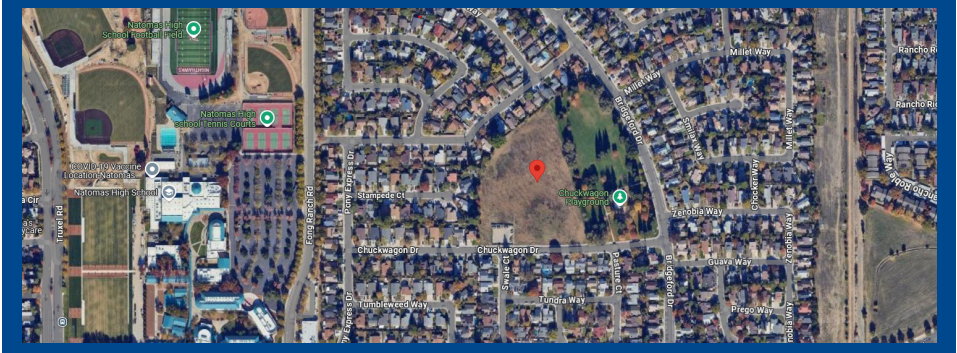
What is Twin Rivers' Workforce Housing?

Workforce housing is designed for individuals who earn too much to qualify for affordable housing subsidies but cannot afford market-rate housing. Twin Rivers' project is designed to support staff within the district such as teachers, bus drivers, custodial staff, facilities and maintenance staff, nutrition services employees, Twin Rivers Police Officers, support staff, and more.



Proposed Workforce Housing Project Details

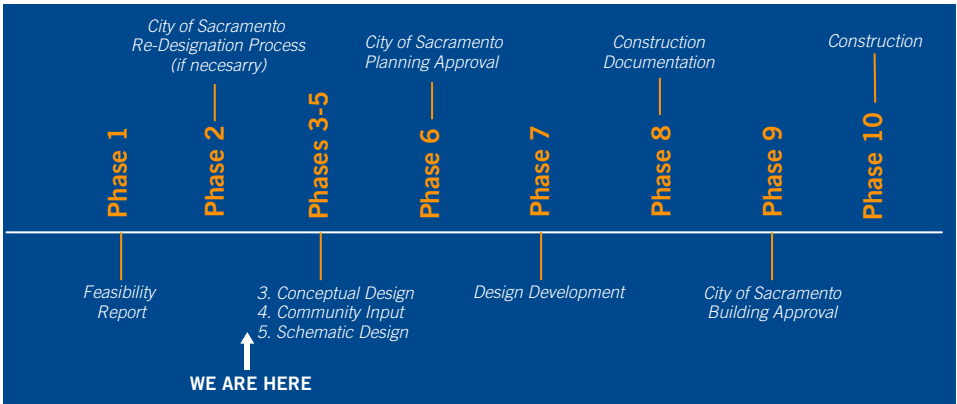
Location: Proposed site at 1251 Chuckwagon Drive, Sacramento. Twin Rivers Unified School District currently owns this land.



Conceptual Designs: Housing will match or exceed the quality of market-rate rentals. Designs may include a mix of single-family homes, townhomes, or multi-plexes to meet the housing needs of residents.



Timeline: The project is in the early phases. Workforce housing projects are typically a multi-year process.



Questions? Visit our website at: <https://trusd.net/workforcehousing>