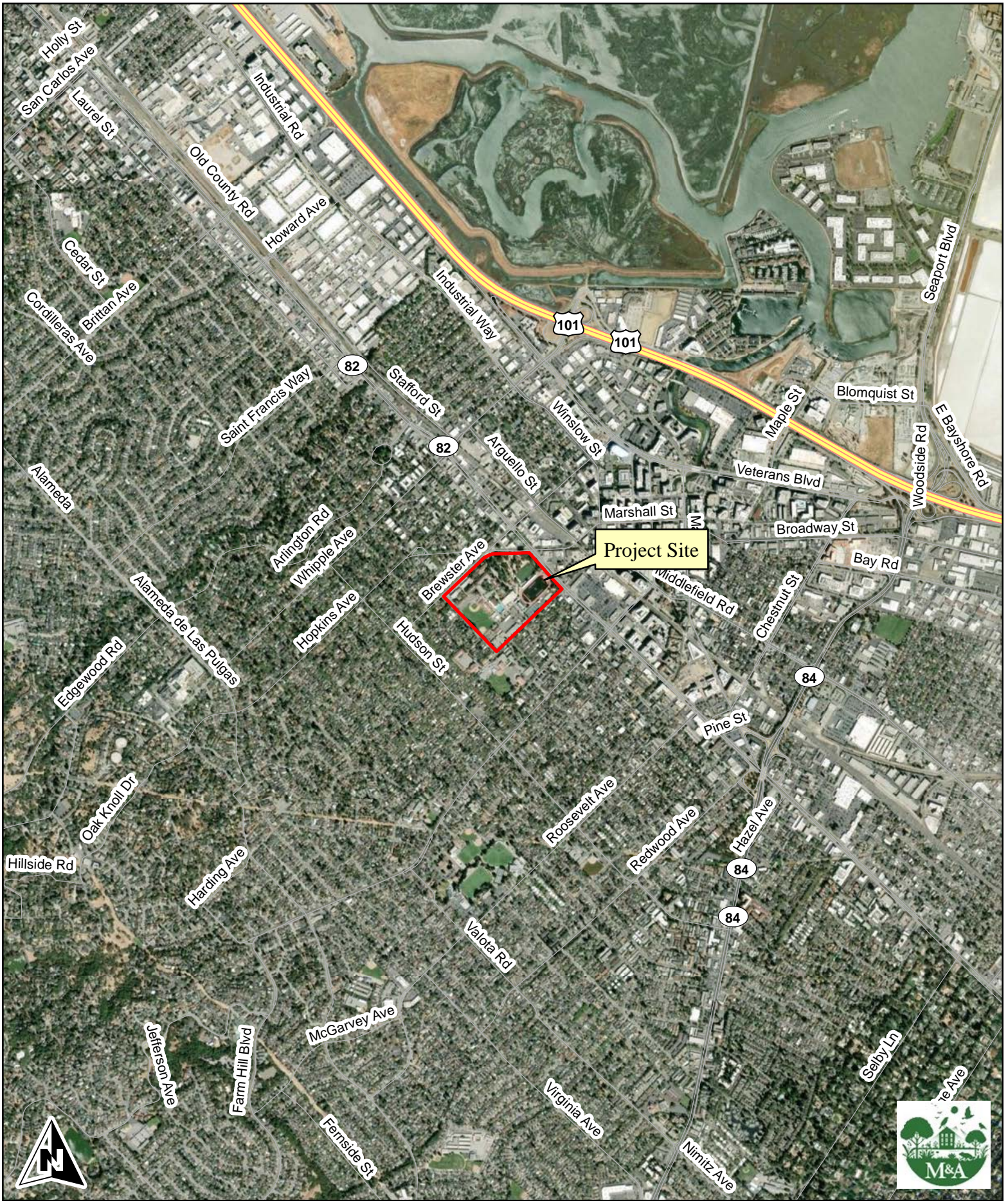


Monk & Associates  
 Environmental Consultants  
 1136 Saranap Avenue, Suite Q  
 Walnut Creek, California 94595  
 (925) 947-4867

Figure 1. Sequoia High School Project Site  
 Regional Map  
 Redwood City, California

County: San Mateo  
 Map Preparation Date: July 24, 2025



Monk & Associates  
 Environmental Consultants  
 1136 Saranap Avenue, Suite Q  
 Walnut Creek, California 94595  
 (925) 947-4867



Figure 2. Sequoia High School Project Site  
 Location Map  
 Redwood City, California



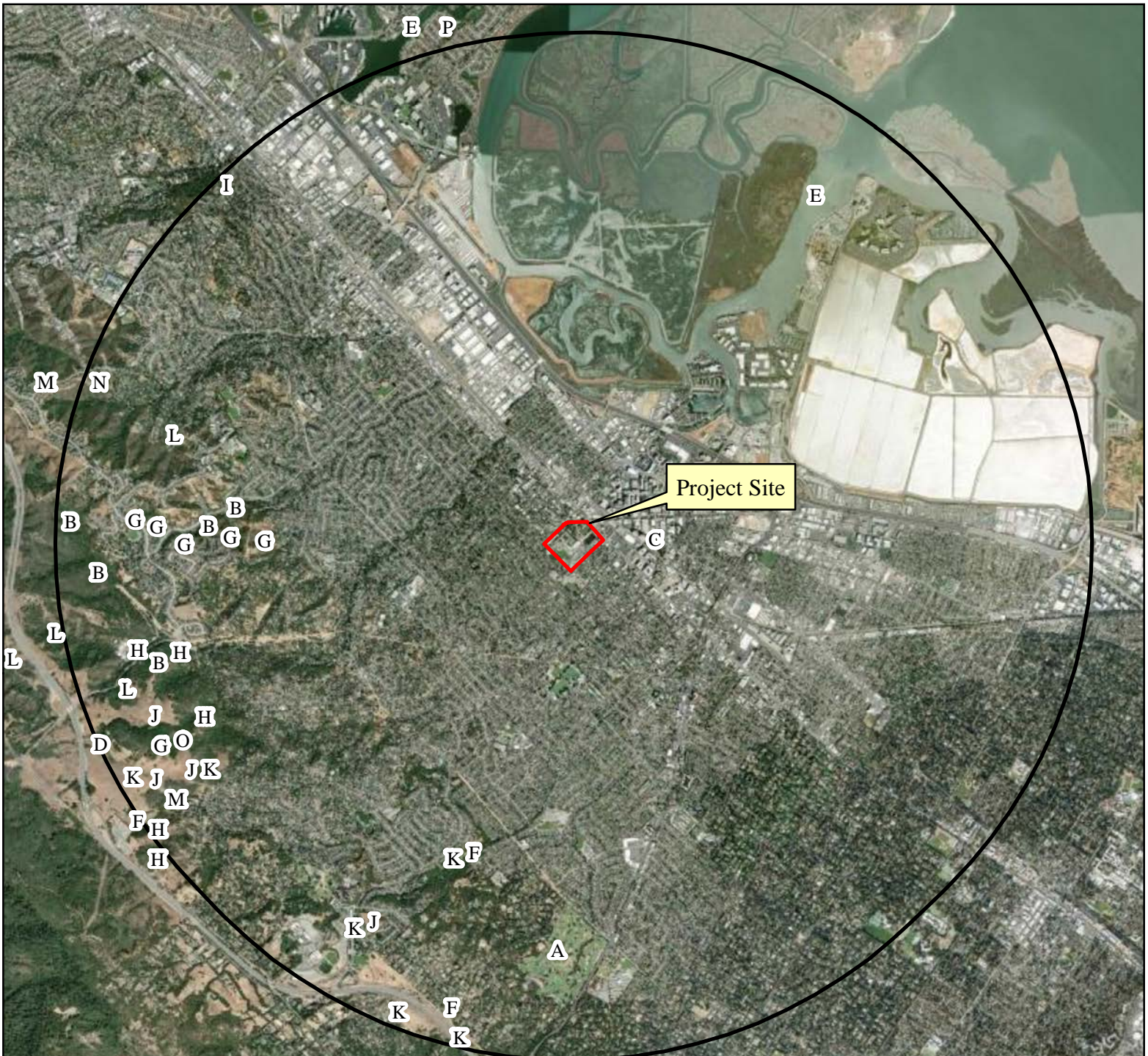
37.484097 -122.236489  
 Section: 19; T5S R3W  
 7.5-Minute Palo Alto quadrangle  
 Aerial Photograph Source: ESRI  
 Map Preparation Date: July 24, 2025



Figure 3. Aerial Photograph of the Sequoia High School Project Site Redwood City, California

Monk & Associates  
 Environmental Consultants  
 1136 Saranap Avenue, Suite Q  
 Walnut Creek, California 94595  
 (925) 947-4867

Aerial Photograph Source: ESRI  
 Map Preparation Date: July 24, 2025



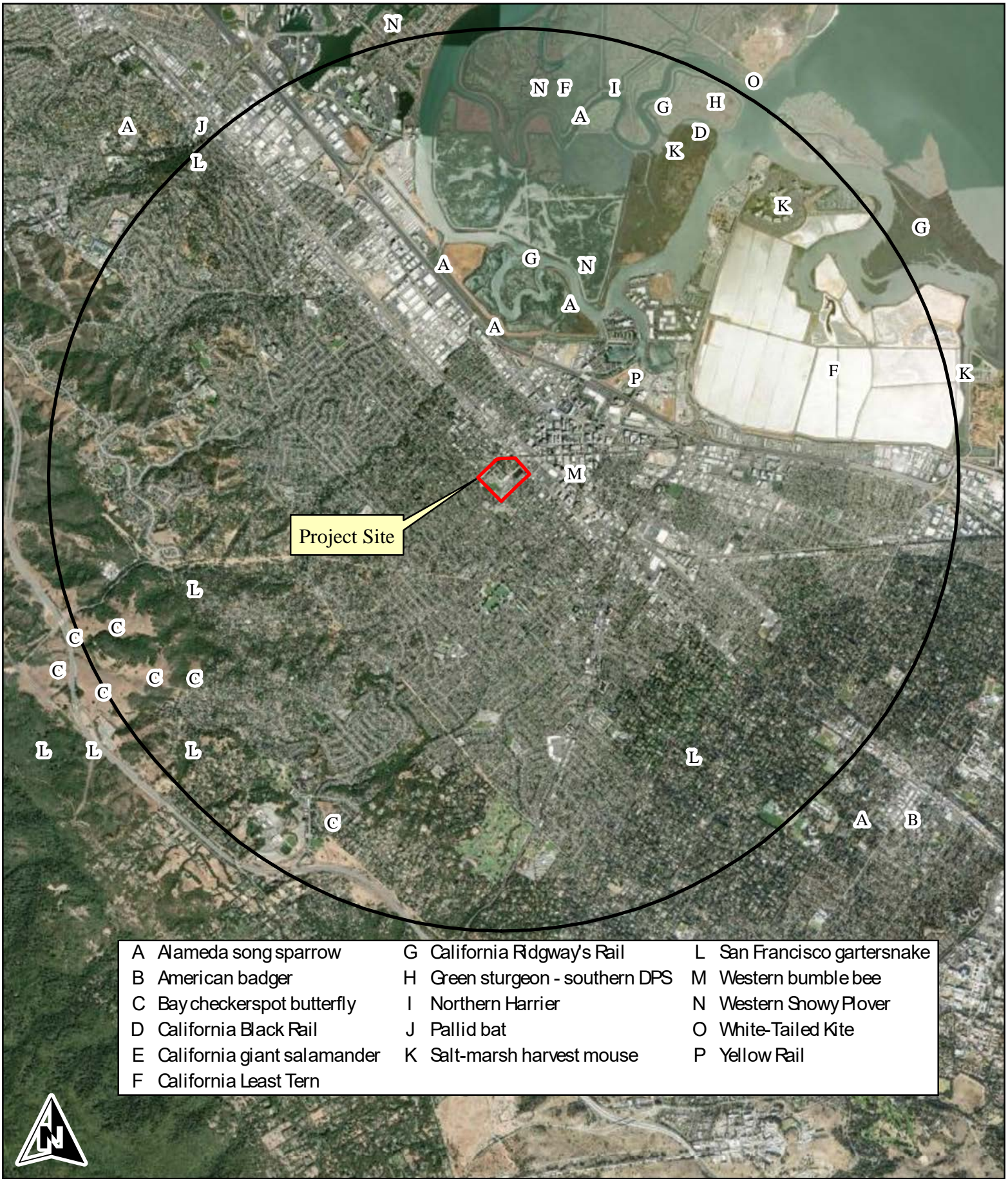
A	<i>Acanthomintha duttonii</i>	G	<i>Collinsia multicolor</i>	L	<i>Malacothamnus arcuatus</i> var. <i>arcuatus</i>
B	<i>Allium peninsulare</i> var. <i>franciscanum</i>	H	<i>Dirca occidentalis</i>	M	<i>Monolopia gracilens</i>
C	<i>Amsinckia lunaris</i>	I	<i>Fritillaria biflora</i> var. <i>ineziana</i>	N	<i>Senecio aphanactis</i>
D	<i>Arctostaphylos regismontana</i>	J	<i>Fritillaria liliacea</i>	O	<i>Silene verecunda</i> ssp. <i>verecunda</i>
E	<i>Chloropyron maritimum</i> ssp. <i>palustre</i>	K	<i>Hesperolinon congestum</i>	P	<i>Trifolium hydrophilum</i>
F	<i>Cirsium fontinale</i> var. <i>fontinale</i>				



Figure 4A. Known Records for Special-Status Plant Species  
Within 3 Miles of the  
Sequoia High School Project Site

Monk & Associates  
Environmental Consultants  
1136 Saranap Avenue, Suite Q  
Walnut Creek, California 94595  
(925) 947-4867

Map Preparation Date:  
July 7, 2025  
— 3-Mile Radius  
Source: CDFW, California  
Natural Diversity Data Base, 2025



Project Site

A Alameda song sparrow	G California Rdgway's Rail	L San Francisco gartersnake
B American badger	H Green sturgeon - southern DPS	M Western bumble bee
C Bay checkerspot butterfly	I Northern Harrier	N Western Snowy Plover
D California Black Rail	J Pallid bat	O White-Tailed Kite
E California giant salamander	K Salt-marsh harvest mouse	P Yellow Rail
F California Least Tern		

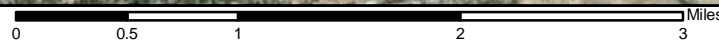


Figure 4B. Known Records for Special-Status Wildlife Species Within 3 Miles of the Sequoia High School Project Site

Monk & Associates  
 Environmental Consultants  
 1136 Saranap Avenue, Suite Q  
 Walnut Creek, California 94595  
 (925) 947-4867

Map Preparation Date:  
 July 7, 2025  
 ——— 3-Mile Radius  
 Source: CDFW, California  
 Natural Diversity Data Base, 2025

**Table 1**  
**Plant Species Observed on the Sequoia High School Project Site**

---

**Ferns and Allies**


---

**Dryopteridaceae**

*Polystichum munitum* Western sword fern

---

**Gymnosperms**


---

**Araucariaceae**

\**Araucaria angustifolia* Brazilian pine  
\**Araucaria heterophylla* Norfolk Island pine

**Cupressaceae**

*Calocedrus decurrens* Incense cedar  
*Hesperocyparis macrocarpa* Monterey cypress  
*Juniperus sp.* Juniper  
*Sequoia sempervirens* Redwood

**Pinaceae**

\**Cedrus deodara* Deodar cedar  
\**Picea pungens* Colorado blue spruce  
*Pinus radiata* Monterey pine  
\**Pinus sp.* Pine  
*Pinus torreyana subsp. torreyana* Torrey pine

---

**Angiosperms - Dicots**


---

**Adoxaceae**

*Sambucus mexicana* Blue elderberry

**Anacardiaceae**

\**Schinus molle* Peruvian pepper tree

**Apocynaceae**

*Asclepias fascicularis* Narrow-leaf milkweed

**Araliaceae**

\**Hedera helix* English ivy

**Asteraceae**

*Baccharis pilularis subsp. pilularis* Baccharis  
\**Cirsium vulgare* Bull thistle  
*Erigeron canadensis* Horseweed  
*Erigeron sp.* Fleabane  
\**Helminthotheca echioides* Bristly ox-tongue  
\**Hypochaeris radicata* Rough cat's-ear

**Berberidaceae**

\**Nandina domestica* Heavenly bamboo

**Bignoniaceae**

\**Jacaranda mimosifolia* Blue jacaranda

---

\* Indicates a non-native species

**Table 1**  
**Plant Species Observed on the Sequoia High School Project Site**

<b>Brassicaceae</b>	
* <i>Lepidium didymum</i>	Wart cress
<b>Buxacea</b>	
* <i>Buxus sp.</i>	Boxwood
<b>Cannabaceae</b>	
* <i>Celtis sinensis</i>	Asian hackberry
<b>Caryophyllaceae</b>	
* <i>Cerastium glomeratum</i>	Mouse-ear chickweed
* <i>Spergularia rubra</i>	Ruby sand-spurrey
<b>Ericaceae</b>	
* <i>Rhododendron sp.</i>	Azalea
<b>Euphorbiaceae</b>	
<i>Chamaesyce sp.</i>	Chamaesyce
* <i>Euphorbia peplus</i>	Petty spurge
<b>Fabaceae</b>	
<i>Cercis occidentalis</i>	Western redbud
* <i>Melilotus indicus</i>	Annual yellow sweetclover
* <i>Robinia pseudoacacia</i>	Black locust
* <i>Trifolium repens</i>	White clover
* <i>Wisteria sp.</i>	Wisteria
<b>Fagaceae</b>	
<i>Quercus agrifolia</i> var. <i>agrifolia</i>	Coast live oak
<i>Quercus lobata</i>	Valley oak
<b>Geraniaceae</b>	
* <i>Erodium cicutarium</i>	Red-stem filaree
* <i>Geranium molle</i>	Dove's-foot geranium
<b>Hydrangeaceae</b>	
* <i>Hydrangea sp.</i>	Hydrangea
<b>Juglandaceae</b>	
<i>Juglans hindsii</i>	Northern California black walnut
<b>Lamiaceae</b>	
* <i>Lavandula sp.</i>	Lavender
* <i>Rosmarinus officinalis</i>	Rosemary
* <i>Salvia leucantha</i>	Mexican sage
<b>Lauraceae</b>	
* <i>Cinnamomum camphora</i>	Camphor tree
<b>Linnaeaceae</b>	
* <i>Abelia sp.</i>	Honeysuckle
<b>Lythraceae</b>	
* <i>Lagerstroemia indica</i>	Crape-myrtle

**Table 1**  
**Plant Species Observed on the Sequoia High School Project Site**

<b>Magnoliaceae</b>	
* <i>Magnolia grandiflora</i>	Magnolia
* <i>Magnolia soulangeana</i>	Saucer magnolia
<b>Malvaceae</b>	
* <i>Malva parviflora</i>	Cheeseweed
<b>Moraceae</b>	
* <i>Ficus carica</i>	Fig
<b>Myrtaceae</b>	
* <i>Corymbia citriodora</i>	Lemon-scented gum
* <i>Eucalyptus globulus</i>	Blue gum
* <i>Leptospermum laevigatum</i>	Leptospermum
* <i>Leptospermum scoparium</i>	New Zealand tea tree
* <i>Melaleuca quinquenervia</i>	Paperbark
* <i>Myrtus communis</i>	Myrtle
* <i>Syzygium paniculatum</i>	magenta cherry
<b>Nyssaceae</b>	
* <i>Nyssa sylvatica</i>	Black tupelo
<b>Oleaceae</b>	
* <i>Ligustrum japonicum</i>	Japanese privet
* <i>Ligustrum lucidum</i>	Glossy privet
* <i>Olea europaea</i>	Olive
* <i>Osmanthus fragrans</i>	sweet olive
<b>Onagraceae</b>	
<i>Epilobium brachycarpum</i>	Summer cottonweed
<i>Epilobium ciliatum</i>	Hairy willow-herb
<b>Papaveraceae</b>	
<i>Eschscholzia californica</i>	California poppy
<b>Pittosporaceae</b>	
* <i>Pittosporum tobira</i>	Japanese pittosporum
<b>Plantaginaceae</b>	
* <i>Plantago major</i>	Common plantain
<b>Plumbaginaceae</b>	
* <i>Limonium perezii</i>	Limonium
<b>Polygonaceae</b>	
* <i>Rumex crispus</i>	Curly dock
<b>Proteaceae</b>	
* <i>Grevillea robusta</i>	Silk-oak
<b>Rhamnaceae</b>	
<i>Frangula californica subsp. californica</i>	California coffeeberry
<b>Rosaceae</b>	
* <i>Photinia serratifolia</i>	Taiwanese photinia

\* Indicates a non-native species

**Table 1**  
**Plant Species Observed on the Sequoia High School Project Site**

* <i>Prunus cerasifera</i>	Cherry plum
<i>Prunus ilicifolia</i> subsp. <i>ilicifolia</i>	Holly-leaved cherry
* <i>Prunus laurocerasus</i>	English-laurel
* <i>Raphiolepis indica</i>	India hawthorne
* <i>Rosa</i> sp.	Wild rose
<b>Salicaceae</b>	
* <i>Populus alba</i>	White poplar
<i>Salix lasiolepis</i>	Arroyo willow
* <i>Xylosma congestum</i>	Dense longwood
<b>Sapindaceae</b>	
<i>Acer negundo</i>	Ash-leaf maple
* <i>Acer palmatum</i>	Japanese maple
<b>Solanaceae</b>	
* <i>Solanum</i> sp.	Nightshade
<b>Theaceae</b>	
* <i>Camellia japonica</i>	Camellia
<b>Ulmaceae</b>	
* <i>Ulmus parvifolia</i>	Chinese elm
* <i>Ulmus pumila</i>	Dwarf Asiatic elm
<b>Verbenaceae</b>	
* <i>Lantana</i> sp.	Lantana
<b>Angiosperms -Monocots</b>	
<b>Alismataceae</b>	
<i>Alisma triviale</i>	Water plantain
<b>Alliaceae</b>	
<i>Allium</i> sp.	Wild onion
<b>Amaryllidaceae</b>	
* <i>Agapanthus orientalis</i>	Lilly-of-the-Nile
<b>Araceae</b>	
* <i>Colocasia</i> sp.	Elephant ear
<b>Arecaceae</b>	
* <i>Phoenix canariensis</i>	Canary Island date palm
<i>Washingtonia filifera</i>	California fan palm
<b>Asphodelaceae</b>	
<i>Aloe</i> sp.	Aloe
<b>Poaceae</b>	
* <i>Agrostis avenacea</i>	Pacific bent grass
<i>Agrostis pallens</i>	Seashore bent
* <i>Crypsis schoenoides</i>	Swamp pricklegrass
* <i>Cynodon dactylon</i>	Bermudagrass
* <i>Hordeum murinum</i>	Wall barley

\* Indicates a non-native species

**Table 1**

**Plant Species Observed on the Sequoia High School Project Site**

---

<i>Panicum sp.</i>	Panicgrass
* <i>Paspalum dilatatum</i>	Dallis grass
* <i>Phyllostachys aurea</i>	Fishpole bamboo
* <i>Poa pratensis subsp. pratensis</i>	Kentucky bluegrass
* <i>Polypogon monspeliensis</i>	Annual beard grass
<b>Typhaceae</b>	
<i>Typha sp.</i>	Cattail

---

\* Indicates a non-native species

**Table 2**  
**Wildlife Species Observed on the Sequoia High School Project Site**

---

**Birds**

Red-shouldered Hawk	<i>Buteo lineatus</i>
Red-tailed Hawk	<i>Buteo jamaicensis</i>
Rock Pigeon	<i>Columba livia</i>
Mourning Dove	<i>Zenaida macroura</i>
Anna's Hummingbird	<i>Calypte anna</i>
Nuttall's Woodpecker	<i>Picoides nuttallii</i>
Black Phoebe	<i>Sayornis nigricans</i>
American Crow	<i>Corvus brachyrhynchos</i>
Common Raven	<i>Corvus corax</i>
Chestnut-backed Chickadee	<i>Poecile rufescens</i>
Oak Titmouse	<i>Baeolophus inornatus</i>
Bushtit	<i>Psaltriparus minimus</i>
Pygmy nuthatch	<i>Sitta pygmaea</i>
Western Bluebird	<i>Sialia mexicana</i>
Dark-eyed Junco	<i>Junco hyemalis</i>
Brown-headed Cowbird	<i>Molothrus ater</i>
House Finch	<i>Haemorhous mexicanus</i>
Lesser Goldfinch	<i>Spinus psaltria</i>

---

**Mammals**

California ground squirrel	<i>Otospermophilus beecheyi</i>
----------------------------	---------------------------------

Table 3

## Special-Status Plant Species Known to Occur Within 3 Miles of the Sequoia High School Project Site

Family Taxon Common Name	Status*	Flowering Period	Habitat	Area Locations	Probability on Project Site
<b>Alliaceae</b>					
<i>Allium peninsulare franciscanum</i> Franciscan onion	Fed: - State: - CNPS: Rank 1B.2	May-June	Cismontane woodland; valley and foothill grassland [clay, often serpentine]. 100- 300 m.	The nearest CNDDDB record of this species is located approximately 1.8 miles west of the project site (Occurrence No. 23). 2015	None. No serpentine grasslands or suitable woodland habitat on the project site. Site almost entirely developed. No impacts expected.
<b>Asteraceae</b>					
<i>Cirsium fontinale fontinale</i> Fountain thistle	Fed: FPE State: CE CNPS: Rank 1B	June-October	Chaparral (openings); valley and foothill grassland; [serpentine seeps].	The nearest CNDDDB record of this species is located approximately 1.8 miles south west of the project site (Occurrence No. 7). 1977	None. No serpentine grasslands or seeps on the project site. Site almost entirely developed. No impacts expected.
<i>Monolopia gracilens</i> Small-flowered monolopia	Fed: State: CNPS: Rank 1B.2	March-July	Coniferous and broadleaved upland forest openings, chaparral openings, and serpentine valley and foothill grassland. Elevation 100- 1200 m.	The nearest CNDDDB record of this species is located approximately 2.6 miles south west of the project site (Occurrence No. 50). 1973	None. No forests, serpentine grasslands, or chaparral habitat on the project site. Site almost entirely developed. No impacts expected.
<i>Senecio aphanactis</i> Chaparral ragwort	Fed: - State: - CNPS: Rank 2B.2	January-April	Foothill woodland; coastal scrub; (alkaline).	The nearest CNDDDB record of this species is located approximately 2.6 miles north west of the project site (Occurrence No. 82). 1973	None. No woodland or coastal scrub on the project site. Site almost entirely developed. No impacts expected.
<b>Boraginaceae</b>					
<i>Amsinckia lunaris</i> Bent-flowered fiddleneck	Fed: - State: - CNPS: Rank 1B.2	March-June	Cismontane woodland, valley and foothill grassland, coastal bluff scrub.	The nearest CNDDDB record of this species is located in the vicinity of the project site (Occurrence No. 69). 1933	None. No serpentine grasslands, coastal bluff scrub, or suitable woodland habitat on the project site. Site almost entirely developed. No impacts expected.

Table 3

## Special-Status Plant Species Known to Occur Within 3 Miles of the Sequoia High School Project Site

Family Taxon Common Name	Status*	Flowering Period	Habitat	Area Locations	Probability on Project Site
<b>Caryophyllaceae</b>					
<i>Silene verecunda verecunda</i> San Francisco campion	Fed: - State: - CNPS: Rank 1B	March-June	Coastal bluff scrub; chaparral; coastal prairie; coastal scrub; valley and foothill grassland.	The nearest CNDDDB record of this species is located approximately 2.5 miles south west of the project site (Occurrence No. 10). 1983	None. No coastal bluff scrub, coastal prairie, chaparral, or suitable grasslands on the project site. Site almost entirely developed. No impacts expected.
<b>Ericaceae</b>					
<i>Arctostaphylos regismontana</i> Kings Mountain manzanita	Fed: - State: - CNPS: Rank 1B	January-April	Broad-leaved upland forest; chaparral; north coast coniferous forest; [granitic or sandstone].	The nearest CNDDDB record of this species is located approximately 3 miles south west of the project site (Occurrence No. 22). 2015	None. No forests or chaparral on the project site. No manzanita species observed during site survey. Site almost entirely developed. No impacts expected.
<b>Fabaceae</b>					
<i>Trifolium hydrophilum</i> Saline clover	Fed: - State: - CNPS: Rank 1B.2	April-June	Marshes and swamps; valley and foothill grassland (mesic, alkaline); vernal pools. 0-300 m.	The nearest CNDDDB record of this species is located approximately 2.9 miles north west of the project site (Occurrence No. 8). 1886	None. No marshes, swamps, alkaline grasslands, or vernal pools on the project site. Site almost entirely developed. No impacts expected.
<b>Lamiaceae</b>					
<i>Acanthomintha duttonii</i> San Mateo thorn-mint	Fed: FE State: CE CNPS: Rank 1B	April-June	Chaparral; valley and foothill grassland [serpentinite].	The nearest CNDDDB record of this species is located approximately 1.4 miles south of the project site (Occurrence No. 2). 1977	None. No chaparral or serpentine grasslands on the project site. Site almost entirely developed. No impacts expected.
<b>Liliaceae</b>					
<i>Fritillaria biflora ineziana</i> Hillsborough chocolate lily	Fed: - State: - CNPS: Rank 1B	March-April	Cismontane woodland; valley and foothill grassland; [serpentinite].	The nearest CNDDDB record of this species is located approximately 2 miles north west of the project site (Occurrence No. 2).	None. No serpentine grasslands or woodlands on the project site. Site almost entirely developed. No impacts expected.

Table 3

## Special-Status Plant Species Known to Occur Within 3 Miles of the Sequoia High School Project Site

Family Taxon Common Name	Status*	Flowering Period	Habitat	Area Locations	Probability on Project Site
<i>Fritillaria liliacea</i> Fragrant fritillary	Fed: - State: - CNPS: Rank 1B.2	February-April	Coastal prairie; coastal scrub; valley and foothill grassland; [often serpentinite].	The nearest CNDDDB record of this species is located approximately 2.6 miles south west of the project site (Occurrence No. 20). 1984	None. No coastal scrub, coastal prairie, or suitable grassland habitat on the project site. Site almost entirely developed. No impacts expected.
<b>Linaceae</b>					
<i>Hesperolinon congestum</i> Marin dwarf flax	Fed: FT State: CT CNPS: Rank 1B.1	April-July	Chaparral; valley and foothill woodland; [serpentinite].	The nearest CNDDDB record of this species is located approximately 1.9 miles south west of the project site (Occurrence No. 29). 2007	None. No serpentine grasslands or chaparral on the project site. Site almost entirely developed. No impacts expected.
<b>Malvaceae</b>					
<i>Malacothamnus arcuatus var. arcuatus</i> Western bewildering bushmallow	Fed: State: CNPS: Rank 1B.2	April-July	This species is endemic to the Santa Cruz mountains, meaning it only grows there and is found nowhere else on the planet.	The nearest CNDDDB record of this species is located approximately 2.3 miles north west of the project site (Occurrence No. 16). 2004	None. This species is endemic to the Santa Cruz mountains. Site almost entirely developed. No impacts expected.
<b>Orobanchaceae</b>					
<i>Chloropyron maritimum palustre</i> Point Reyes salty bird's-beak	Fed: - State: - CNPS: Rank 1B.2	June-October	Marshes and swamps (coastal salt).	The nearest CNDDDB record of this species is located approximately 2.1 miles north east of the project site (Occurrence No. 18). 1908	None. No marshes or swamps on the project site. Site almost entirely developed. No impacts expected.
<b>Plantaginaceae</b>					
<i>Collinsia multicolor</i> San Francisco collinsia	Fed: - State: - CNPS: Rank 1B	March-May	Closed-cone coniferous forest; shady scrub forest, coastal scrub.	The nearest CNDDDB record of this species is located approximately 1.7 miles west of the project site (Occurrence No. 30). 2017	None. No forest or scrub habitat on the project site. Site almost entirely developed. No impacts expected.

**Table 3**

**Special-Status Plant Species Known to Occur Within 3 Miles of the Sequoia High School Project Site**

Family	Taxon	Common Name	Status*	Flowering Period	Habitat	Area Locations	Probability on Project Site
<b>Thymelaeaceae</b>							
	<i>Dirca occidentalis</i>	Western leatherwood	Fed: - State: - CNPS: Rank 1B.2	January-April	Chaparral; riparian, broadleaf, and coniferous woodlands and forests; [mesic locations].	The nearest CNDDDB record of this species is located approximately 2 miles west of the project site (Occurrence No. 72). 2015	None. No chaparral or riparian woodlands or forests on the project site. Site almost entirely developed. No impacts expected.

**\*Status**

Federal:

- FE - Federal Endangered
- FT - Federal Threatened
- FPE - Federal Proposed Endangered
- FPT - Federal Proposed Threatened
- FC - Federal Candidate

State:

- CE - California Endangered
- CT - California Threatened
- CR - California Rare
- CC - California Candidate
- CSC - California Species of Special Concern

CNPS:

- Rank 1A - Presumed extinct in California
- Rank 1B - Plants rare, threatened, or endangered in California and elsewhere
- Rank 1B.1 - Seriously endangered in California (over 80% occurrences threatened/ high degree and immediacy of threat)
- Rank 1B.2 - Fairly endangered in California (20-80% occurrences threatened)
- Rank 1B.3 - Not very endangered in California (<20% of occurrences threatened or no current threats known)

CNPS Continued:

- Rank 2 - Plants rare, threatened, or endangered in California, but more common elsewhere
- Rank 2A - Extirpated in California, common elsewhere
- Rank 2B.1 - Seriously endangered in California, but more common elsewhere
- Rank 2B.2 - Fairly endangered in California, but more common elsewhere
- Rank 2B.3 - Not very endangered in California, but more common elsewhere
- Rank 3 - Plants about which we need more information (Review List)
- Rank 3.1 - Plants about which we need more information (Review List)  
Seriously endangered in California
- Rank 3.2 - Plants about which we need more information (Review List)  
Fairly endangered in California
- Rank 4 - Plants of limited distribution - a watch list
- Rank 4.2 - Plants of limited distribution; fairly threatened in California
- Rank 4.3 - Plants of limited distribution; not very threatened in California

Table 4

## Special-Status Wildlife Species Known to Occur Within 3 Miles of the Sequoia High School Project Site

Species	*Status	Habitat	Closest Locations	Probability on Project Site
<b>Insects</b>				
Western bumble bee <i>Bombus occidentalis</i>	Fed: CC State: CC Other:	Confined to high elevation sites and north coast. Inhabits grassland with select food plants: Melilotus, Cirsium, Trifolium, Centaurea, Chrysothamnus, and Eriogonum. Typically nests underground in abandoned rodent burrows or other cavities.	The nearest CNDDDB record of this species is from 1963 and is located in the vicinity of the project site (Occurrence No. 294).	None. No known occurrences in the area in over 60 years. Project site is outside of the known current range of this species. No impacts anticipated.
Bay checkerspot butterfly <i>Euphydryas editha bayensis</i>	Fed: FT State: - Other:	Found in serpentine grasslands around San Francisco Bay. Dwarf plantain ( <i>Plantago erecta</i> ) is the larvae's host plant. Owl's-clover ( <i>Castilleja</i> spp.) is a nectar source.	The nearest CNDDDB record of this species is located approximately 2.3 miles south west of the project site (Occurrence No. 4). 1994	None. No serpentine grassland habitat on or near the project site. No suitable habitat for host plants or nectar source plants on the project site. No impacts anticipated.
<b>Fish</b>				
Green sturgeon - Southern DPS <i>Acipenser medirostris</i>	Fed: FT State: - Other:	Found in rivers, estuaries, and marine waters. Spawns in the Sacramento River and Klamath River. Prefers lower reaches of large rivers for spawning. Needs swift currents and large cobble.	The nearest CNDDDB record of this species is from 2016 and is located approximately 1.2 miles north of the project site (Occurrence No. 11).	None. No rivers, estuaries, or marine waters on the project site. Only aquatic habitat onsite is ephemeral drainage which is not suitable habitat for this species. No impacts anticipated.
<b>Amphibians</b>				
California giant salamander <i>Dicamptodon ensatus</i>	Fed: CSC State: CSC Other:	Inhabits wet coastal forests in or near clear, cold permanent and semi-permanent streams and seepages. Found from Santa Cruz County to Mendocino County in two to three isolated regions.	The nearest CNDDDB record of this species is from 1935 and is located approximately 2.7 miles south of the project site (Occurrence No. 90).	None. No coastal forests or permanent or semi-permanent streams or seepages on or near the project site. No impacts anticipated.
<b>Birds</b>				
White-tailed Kite <i>Elanus leucurus</i>	Fed: FP State: FP Other:	Found in lower foothills and valley margins with scattered oaks and along river bottomlands or marshes adjacent to oak woodlands. Nests in trees with dense tops.	The nearest CNDDDB record of this species is from 1971 and is located approximately 3.0 miles north east of the project site (Occurrence No. 5).	Low. Large trees in the arboretum area near the north end of the project site provide suitable nesting habitat for this species. Preconstruction surveys will be conducted. See text.

Table 4

## Special-Status Wildlife Species Known to Occur Within 3 Miles of the Sequoia High School Project Site

Species	*Status	Habitat	Closest Locations	Probability on Project Site
Northern Harrier <i>Circus hudsonius</i>	Fed: - State: CSC Other:	Nests on the ground or in shrubby vegetation typically in grasslands, fallow farm lands, near freshwater and salt water marshes.	The nearest CNDDDB record of this species is from 1971 and is located approximately 2.6 miles north of the project site (Occurrence No. 6).	None. No suitable habitat on or near the project site. Project site almost fully developed and is a currently operating high school. Preconstruction nesting surveys will be conducted nonetheless. No impacts anticipated.
Yellow rail <i>Coturnicops noveboracensis</i>	Fed: - State: CSC Other:	Summer resident in eastern Sierra Nevada in Mono County. Fresh-water marshlands.	The nearest CNDDDB record of this species is from 1912 and is located in the general vicinity of the project site (Occurrence No. 3).	None. No marsh habitat on or near the project site. Project site almost fully developed and is a currently operating high school which is surrounded by high-density development. No impacts anticipated.
California Black Rail <i>Laterallus jamaicensis coturniculus</i>	Fed: -- State: CT Other:	Inhabits salt marshes bordering larger bays. Prefers tidal salt marshes of pickleweed.	The nearest CNDDDB record of this species is from 2011 and is located approximately 2.7 miles north of the project site (Occurrence No. 321).	None. No salt marsh habitat on or near the project site. Project site almost fully developed and site of currently operating high school. No impacts anticipated.
California Ridgway's Rail <i>Rallus obsoletus obsoletus</i>	Fed: FE State: CE Other:	Inhabits salt water and brackish marshes with tidal sloughs in San Francisco Bay. Prefers dense pickleweed for cover, but forages for invertebrates along mud-bottomed sloughs.	The nearest CNDDDB record of this species is from 1978 and is located approximately 1.2 miles north east of the project site (Occurrence No. 48).	None. No salt marsh habitat on or near the project site. Project site almost fully developed and site of currently operating high school. No impacts anticipated.
Western Snowy Plover <i>Charadrius alexandrinus nivosus</i>	Fed: FT State: CSC Other:	Prefers sandy beaches, salt pond levees, and shores of large alkali lakes. Requires sandy, gravelly, or friable soil for nesting.	The nearest CNDDDB record of this species is from 1978 and is located approximately 0.9 mile north of the project site (Occurrence No. 88).	None. No suitable habitat on the project site. Project site almost fully developed and is a currently operating high school which is surrounded by high-density development. No impacts anticipated.
California least tern <i>Sterna antillarum brownii</i>	Fed: FE State: CE Other:	Breeds colonially along the coast from San Francisco Bay to Northern Baja California. Nests on bare or sparsely vegetated flat substrates, such as beaches, alkali flats, landfills, or paved areas.	The nearest CNDDDB record of this species is from 1976 and is located approximately 1.6 miles northeast of the project site (Occurrence No. 6).	None. No suitable habitat on or near the project site. Site is a currently operating high school. Human disturbance is too high for this species. No impacts anticipated.
Alameda Song Sparrow <i>Melospiza melodia pusillula</i>	Fed: -- State: CSC Other:	Found in Salicornia marshes in the southern arm of San Francisco Bay. Nests in low Grindelia bushes and in Salicornia.	The nearest CNDDDB record of this species is located approximately 0.8 miles north of the project site (Occurrence No. 10). 2004	None. No marsh habitat on or near the project site. Project site almost fully developed and site of currently operating high school. No impacts anticipated.

**Table 4**

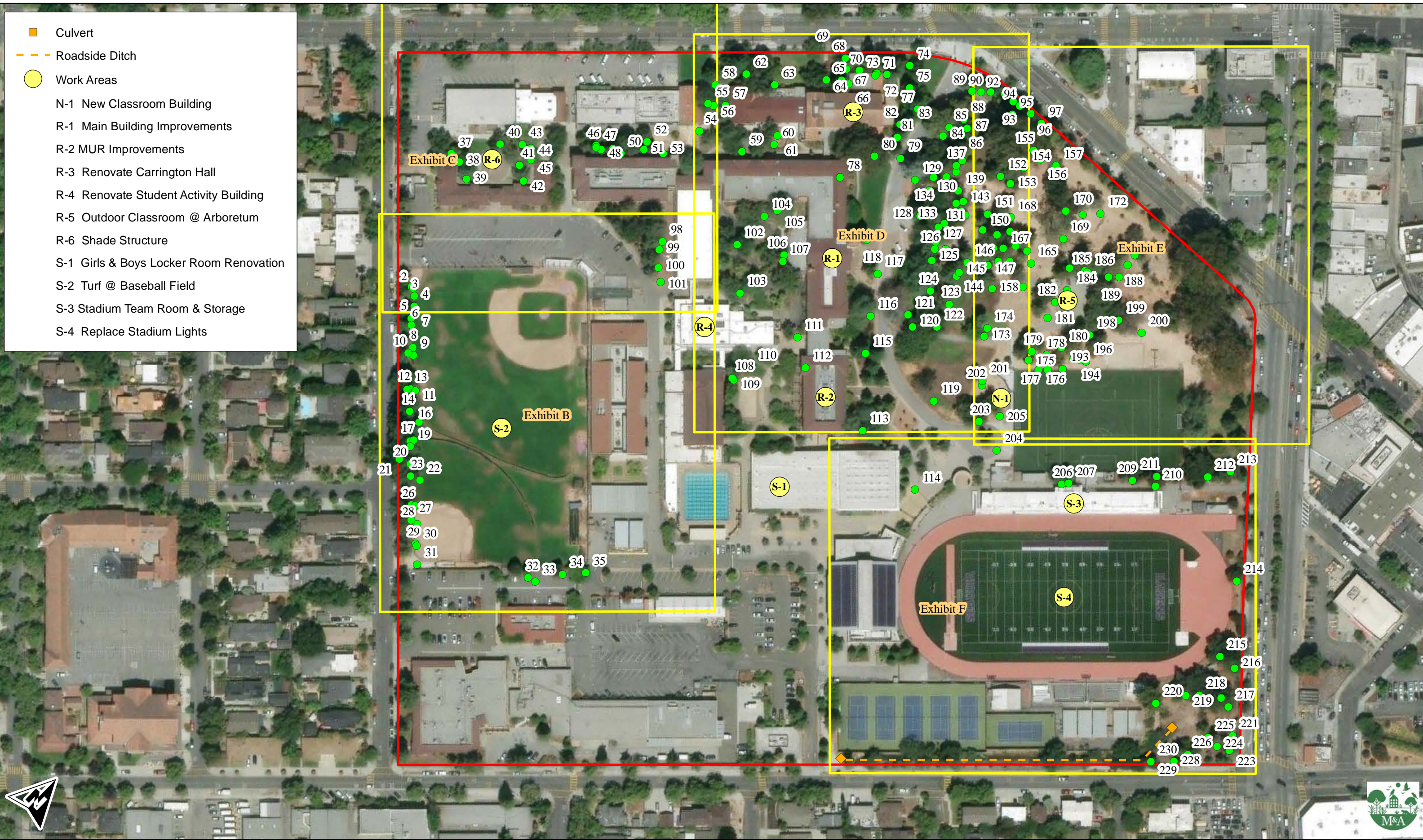
**Special-Status Wildlife Species Known to Occur Within 3 Miles of the Sequoia High School Project Site**

Species	*Status	Habitat	Closest Locations	Probability on Project Site
<b>Mammals</b>				
Pallid bat <i>Antrozous pallidus</i>	Fed: - State: CSC Other:	Occurs in deserts, grasslands, shrublands, woodlands, and forests. Most common in dry habitats with rocky areas for roosting. Roosts in caves, crevices, mines, and occasionally hollow trees. Night roosts in open areas such as porches and open buildings.	The nearest CNDDDB record of this species is from 1952 and is located approximately 2.6 miles north west of the project site (Occurrence No. 292).	None. No suitable roosting or breeding habitat on the project site. Site is a currently operating high school. Human disturbance is too high for this species. No impacts anticipated.
Salt-marsh harvest mouse <i>Reithrodontomys raviventris</i>	Fed: FE State: CE Other:	Inhabits saline marshes in the San Francisco Estuary. Prefers pickleweed marshes. Requires higher areas for escaping high water.	The nearest CNDDDB record of this species is from 1992 and is located approximately 1.5 miles north of the project site (Occurrence No. 74).	None. No marsh habitat on or near the project site. Project site almost fully developed and is a currently operating high school which is surrounded by high-density development. No impacts anticipated.
American badger <i>Taxidea taxus</i>	Fed: - State: CSC Other:	Most abundant in drier open stages of most shrub, forest, and herbaceous habitats, with friable soils. Need sufficient food, friable soils & open, uncultivated ground. Prey on burrowing rodents. Dig burrows.	The nearest CNDDDB record of this species is located approximately 2.9 miles south east of the project site (Occurrence No. 4). 1894	None. No suitable habitat or burrows of sufficient size on the project site. No known occurrences in the area in over 100 years. Project site almost fully developed and site of currently operating high school. No impacts anticipated.

**\*Status**

<b>Federal:</b>	<b>State:</b>	<b>State:</b>	<b>Other:</b>
FE - Federal Endangered	CE - California Endangered	CSC - California Species of Special Concern	SA - CDFW Special Animals List
FT - Federal Threatened	CT - California Threatened	FP - Fully Protected	IUCN V - International Union for Conservation of
FPE - Federal Proposed Endangered	CR - California Rare	WL - Watch List. Not protected pursuant to CEQA	Nature (IUCN) Vulnerable
FPT - Federal Proposed Threatened	CC - California Candidate		
FC - Federal Candidate			
FPD - Federally Proposed for delisting			

- Culvert
- - - Roadside Ditch
- Work Areas
- N-1 New Classroom Building
- R-1 Main Building Improvements
- R-2 MUR Improvements
- R-3 Renovate Carrington Hall
- R-4 Renovate Student Activity Building
- R-5 Outdoor Classroom @ Arboretum
- R-6 Shade Structure
- S-1 Girls & Boys Locker Room Renovation
- S-2 Turf @ Baseball Field
- S-3 Stadium Team Room & Storage
- S-4 Replace Stadium Lights



Monk & Associates  
 Environmental Consultants  
 1136 Saranap Avenue, Suite Q  
 Walnut Creek, California 94595  
 (925) 947-4867

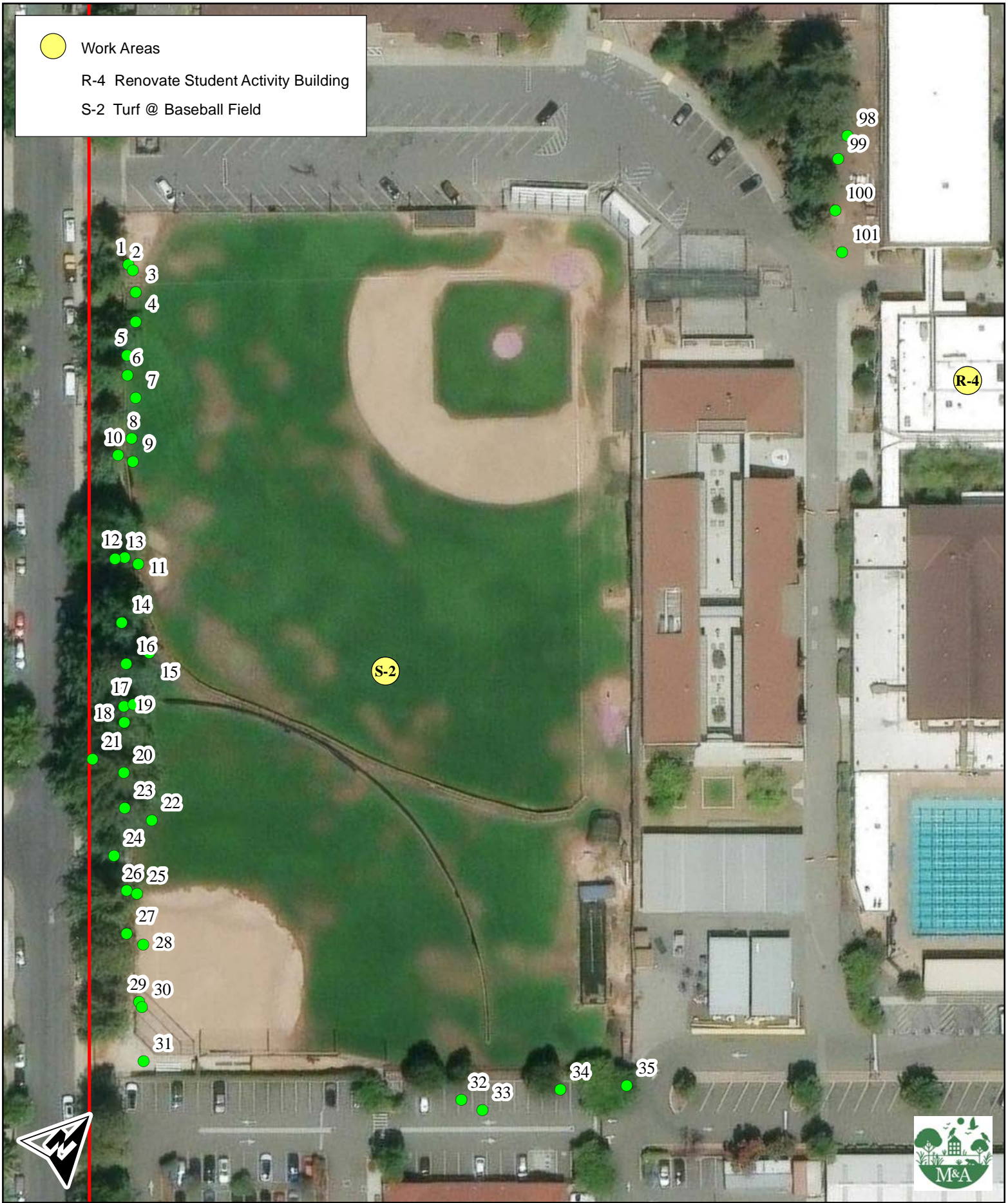
Exhibit A. Tree Exhibit  
 Sequoia High School Project Site  
 Redwood City, California

Aerial Photograph Source: ESRI  
 Map Preparation Date: February 25, 2026

● Work Areas

R-4 Renovate Student Activity Building

S-2 Turf @ Baseball Field



Monk & Associates  
Environmental Consultants  
1136 Saranap Avenue, Suite Q  
Walnut Creek, California 94595  
(925) 947-4867

Exhibit B. Tree Exhibit  
Sequoia High School Project Site  
Redwood City, California

Aerial Photograph Source: ESRI  
Map Preparation Date: February 25, 2026





● Work Areas

R-4 Renovate Student Activity Building

R-6 Shade Structure



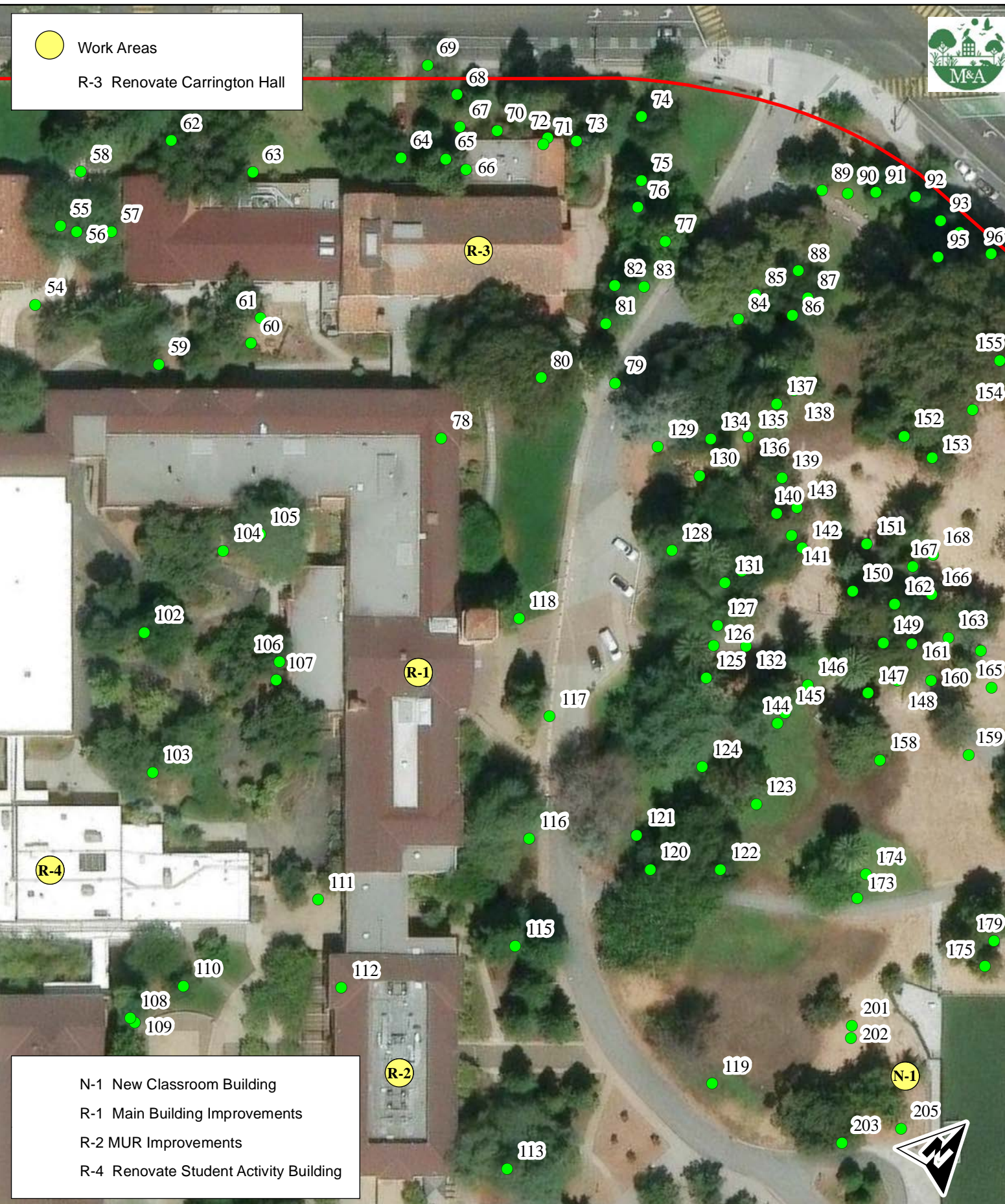
Monk & Associates  
Environmental Consultants  
1136 Saranap Avenue, Suite Q  
Walnut Creek, California 94595  
(925) 947-4867

Exhibit C. Tree Exhibit  
Sequoia High School Project Site  
Redwood City, California

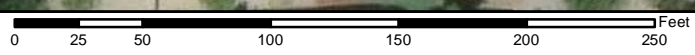
Aerial Photograph Source: ESRI  
Map Preparation Date: February 25, 2026



 Work Areas  
 R-3 Renovate Carrington Hall



N-1 New Classroom Building  
 R-1 Main Building Improvements  
 R-2 MUR Improvements  
 R-4 Renovate Student Activity Building



Monk & Associates  
 Environmental Consultants  
 1136 Saranap Avenue, Suite Q  
 Walnut Creek, California 94595  
 (925) 947-4867

**Exhibit D. Tree Exhibit**  
**Sequoia High School Project Site**  
**Redwood City, California**

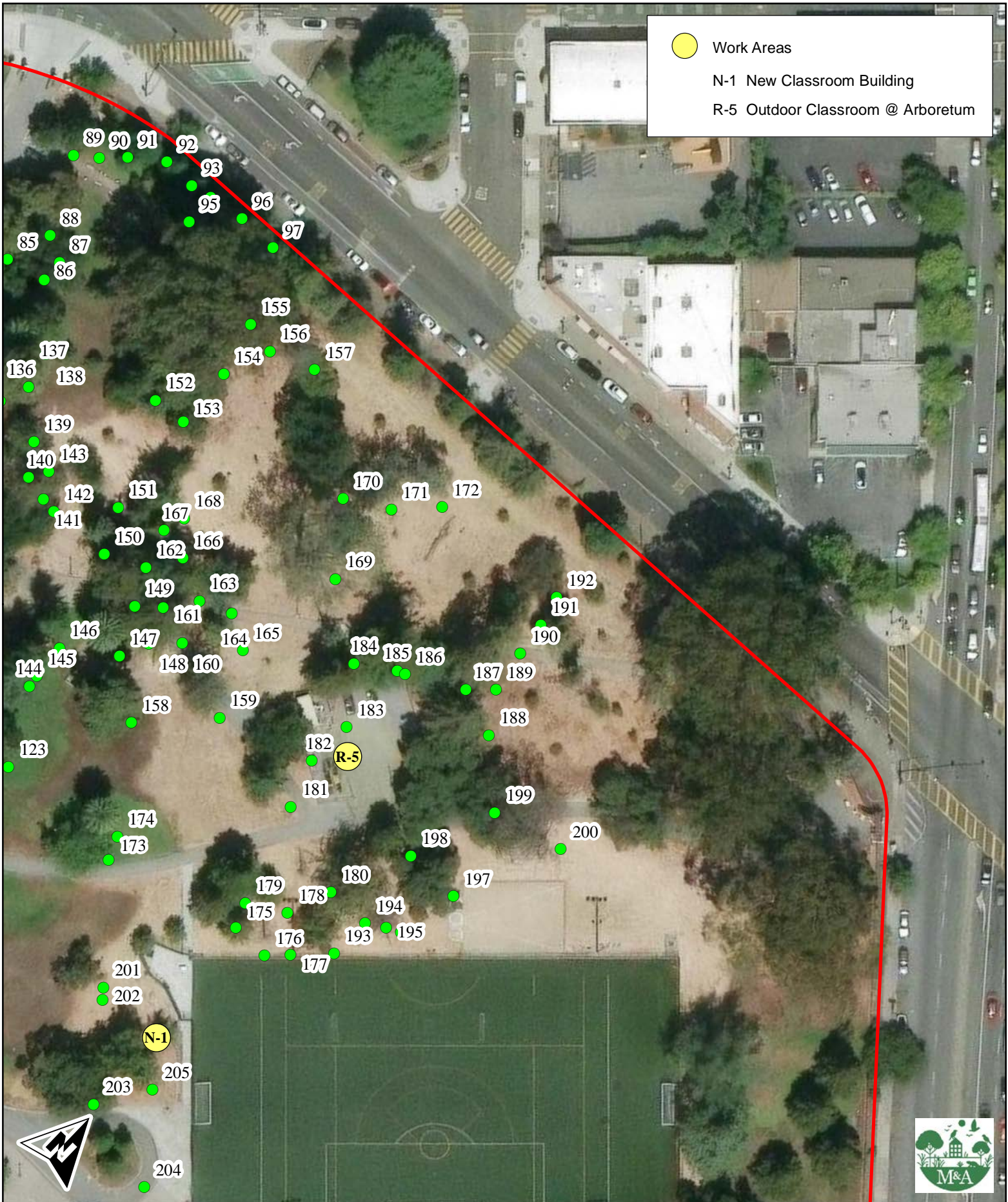
Aerial Photograph Source: ESRI  
 Map Preparation Date: February 25, 2026



Work Areas

N-1 New Classroom Building

R-5 Outdoor Classroom @ Arboretum

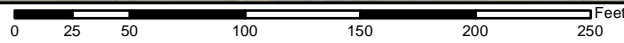
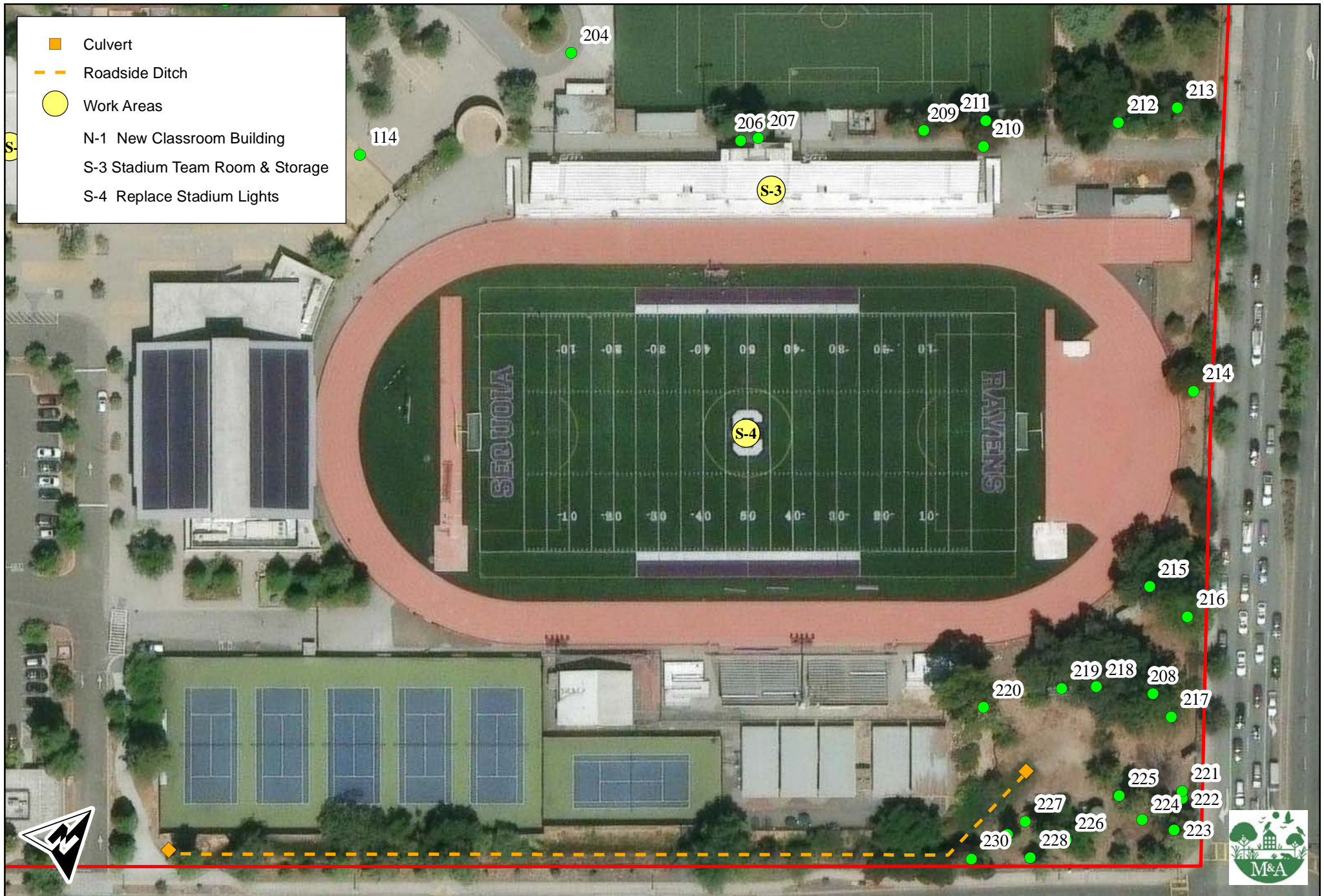


Monk & Associates  
 Environmental Consultants  
 1136 Saranap Avenue, Suite Q  
 Walnut Creek, California 94595  
 (925) 947-4867

Exhibit E. Tree Exhibit  
 Sequoia High School Project Site  
 Redwood City, California

Aerial Photograph Source: ESRI  
 Map Preparation Date: February 25, 2026

- Culvert
- - - Roadside Ditch
- Work Areas
- N-1 New Classroom Building
- S-3 Stadium Team Room & Storage
- S-4 Replace Stadium Lights



Monk & Associates  
 Environmental Consultants  
 1136 Saranap Avenue, Suite Q  
 Walnut Creek, California 94595  
 (925) 947-4867

Exhibit F. Tree Exhibit  
 Sequoia High School Project Site  
 Redwood City, California

Aerial Photograph Source: ESRI  
 Map Preparation Date: February 25, 2026