

ORINDA UNION SCHOOL DISTRICT

8 Altarinda Rd.  
Orinda, CA 94563-2603

Phone: (925) 254-4901

SchoolWorks, Inc.

8700 Auburn Folsom Rd, 200  
Granite Bay, CA 95746

Phone: (916) 733-0402

# 2024/25 DEMOGRAPHICS AND ENROLLMENT PROJECTIONS

OCTOBER 2024



**TABLE OF CONTENTS**

	Page
EXECUTIVE SUMMARY .....	1
INTRODUCTION.....	3
METHODOLOGY .....	4
DISTRICT BOUNDARIES.....	6
HISTORIC BIRTH RATES .....	8
CLASSROOM COUNTS AND CAPACITY .....	14
SCHOOL PROJECTIONS.....	15
SCHOOL FACILITY UTILIZATION .....	31

DRAFT

**CHARTS**

	Page
10 YEAR ENROLLMENT HISTORY AND 6 YEAR ENROLLMENT PROJECTIONS.....	2
KINDERGARTEN PROJECTIONS BASED ON BIRTHS.....	8
KINDERGARTEN ENROLLMENT TO BIRTH RATIO .....	10
TK PROJECTIONS BASED ON BIRTHS .....	11
TK/K ENROLLMENT PLANNING .....	12
COHORT CHANGE SINCE KINDERGARTEN .....	12
HISTORIC ENROLLMENT AND COHORTS .....	13
LOADING STANDARDS.....	15
CAPACITY & PROJECTED ENROLLMENT	
DEL REY ELEM.....	17
GLORIETTA ELEM.....	19
SLEEPY HOLLOW ELEM.....	21
WAGNER RANCH ELEM .....	23
ORINDA INTERMEDIATE.....	25
STUDENT ATTENDANCE MATRIX.....	26
STUDENT RESIDENTS & ENROLLMENT .....	27
10 YEAR ENROLLMENT HISTORY AND 6 YEAR ENROLLMENT PROJECTIONS.....	28
ENROLLMENT PROJECTION SUMMARY BY GRADE .....	29
ENROLLMENT PROJECTION SUMMARY BY SCHOOL .....	29
ENROLLMENT PROJECTIONS BY SCHOOL AND GRADE.....	30
SCHOOL FACILITY UTILIZATION .....	31

DRAFT

**MAPS**

	Page
DISTRICT MAP WITH STUDENT RESIDENTIAL LOCATIONS.....	6
SCHOOL LOCATIONS AND ELEMENTARY BOUNDARIES.....	7
ZIP CODE MAP .....	9
SCHOOL BOUNDARY MAPS	
DEL REY ELEM.....	16
GLORIETTA ELEM.....	18
SLEEPY HOLLOW ELEM.....	20
WAGNER RANCH ELEM .....	22
ORINDA INTERMEDIATE.....	24
SCHOOL FACILITY UTILIZATION – ELEMENTARY SCHOOLS .....	32

DRAFT

# Orinda Union School District

## 2024/25 Demographics and Enrollment Projections

---

### EXECUTIVE SUMMARY

Orinda Union School District consists of four elementary schools and one intermediate school. Orinda Union School District had a stable enrollment from 2,537 students during the 2015/16 school year to an enrollment of 2,562 in 2019/20, declined to an enrollment of 2,471 in 2020/21, and has since been growing slightly to a current enrollment of 2,590 students.

Orinda Union School District is projected to grow in enrollment by 1.43% (or 37 students) for the 2025/26 school year. The expanding TK program is projected to have an impact of 85 new TK students next year. The District is projected to continue growing slightly in enrollment over the next six years, with a projected 2,664 students in the 2030/31 school year. This is a total growth of 74 students, which is an increase of 2.86%.

Based on current District loading standards and classroom space, the District has a net classroom capacity of 1,945 elementary school students and 1,204 intermediate school students, and a current enrollment of 1,768 elementary school students and 822 intermediate school students. This gives the District a current utilization factor of 90.9% for the elementary schools and 68.3% for the intermediate school. The projected utilization factor in six years will be 96.0% for the elementary schools and 66.1% for the intermediate school. This assumes loading standards remain constant and no additional facilities are built or removed.

This report includes the anticipated growth in the Transitional Kindergarten program to reflect the recent “TK for All” initiative which will allow a phased plan for all 4 year olds to attend TK by next year. The projections in this report assume TK will be offered at each elementary site as the numbers will justify classes for each campus.

These projections assume the transfers between schools remain consistent. If changes in facilities, schedules, programs or policies are made, then the patterns may be impacted.

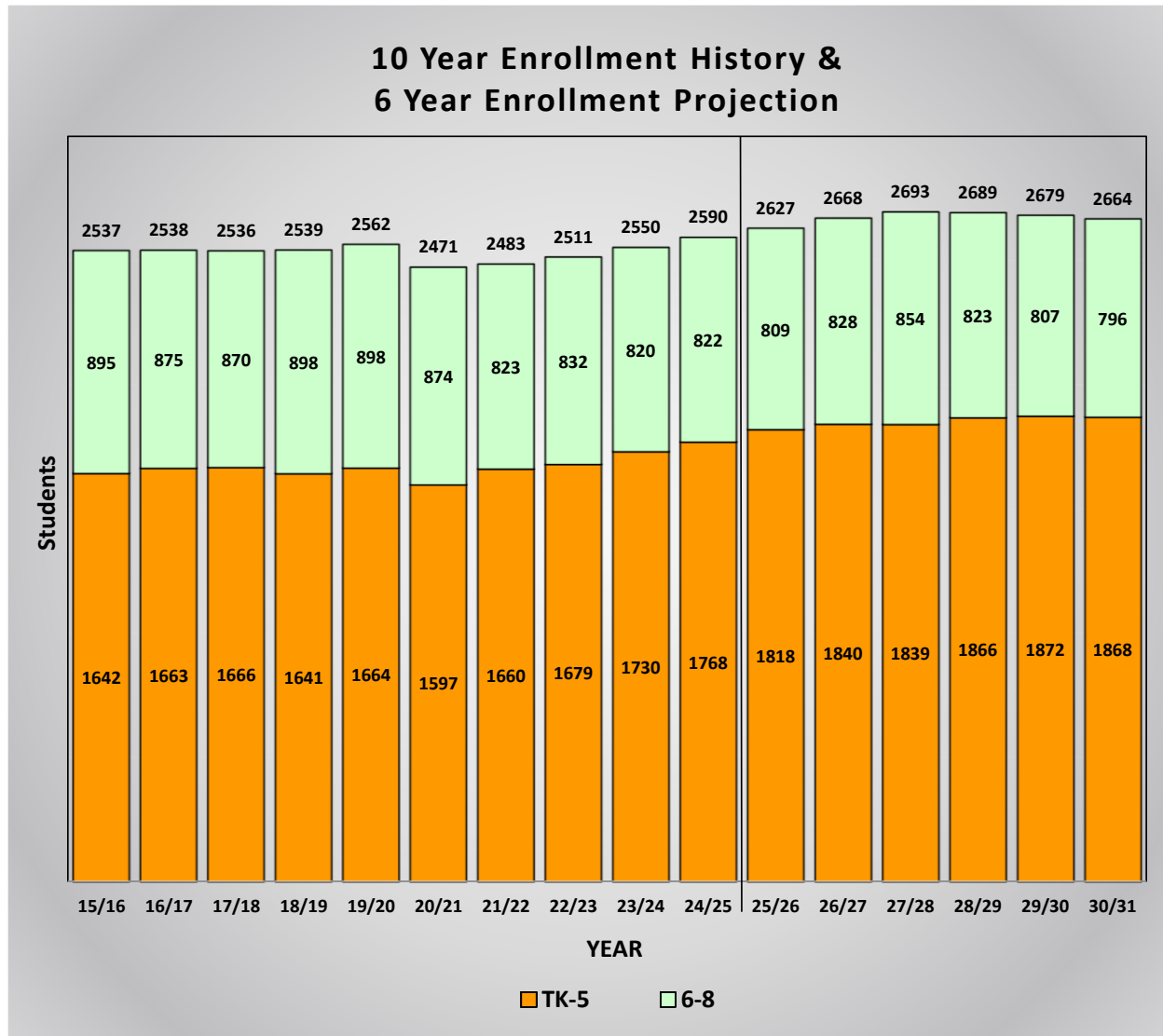
DRAFT

# Orinda Union School District

## 2024/25 Demographics and Enrollment Projections

### Ten Year Enrollment History and Six Year Enrollment Projections

This graph shows a summary of the projections for the entire District. It shows the current enrollment for 2024/25, the historic enrollment for the past nine years, and the projected enrollment for the next six years. The end result is a total of 2,664 students in the District in 2030/31.



The Orinda Union School District had a stable enrollment from 2,537 students during the 2015/16 school year to an enrollment of 2,562 in 2019/20, declined to an enrollment of 2,471 in 2020/21, and has since been growing slightly to a current enrollment of 2,590 students.

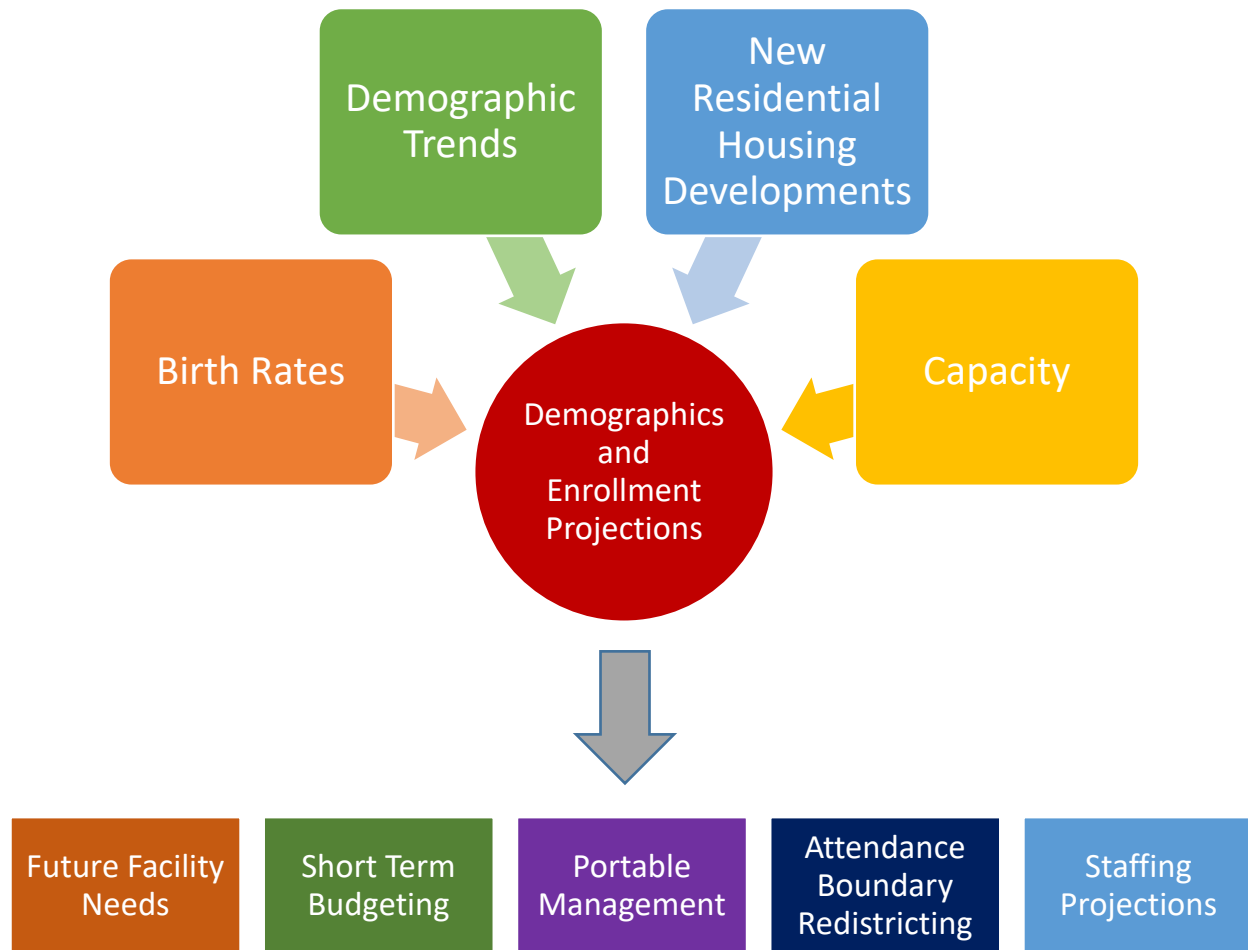
This graph is color coded by grade groupings:

Orange represents the historic and projected enrollment for the elementary school grades TK-5.  
Green represents the historic and projected enrollment for the intermediate school grades 6-8.

The entire District enrollment is shown at the top of each bar.

**INTRODUCTION**

This Demographics and Enrollment Projections Study provides a comprehensive enrollment analysis for the Orinda Union School District. The district-wide and school-specific enrollment projections are meant to serve as a planning tool to help with both long- and short-term planning. Demographic Studies examine the factors that influence school enrollments, namely trends in demographics, birth rates, and housing development. They are also used as a tool to identify certain facility planning requirements such as capacity, utilization of existing facilities, planning for modernization or new construction, and attendance boundary redistricting.

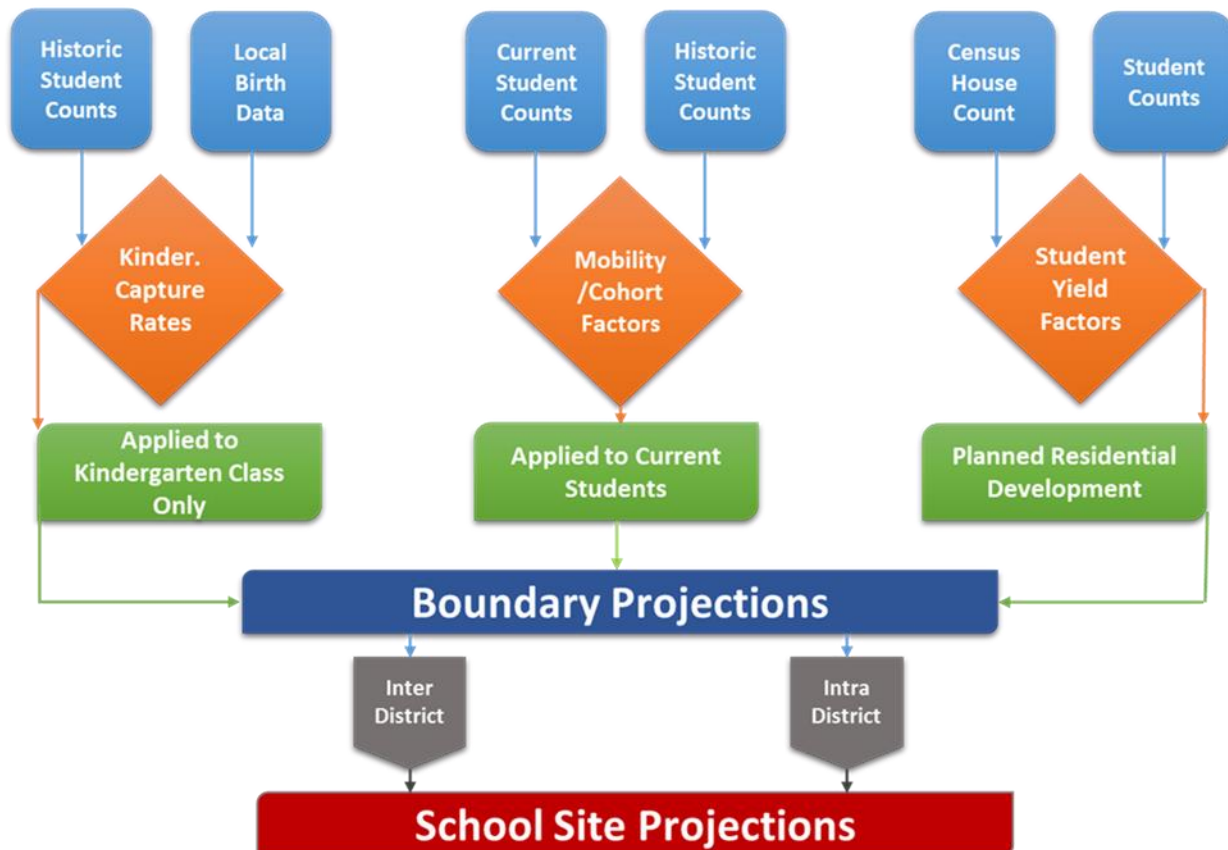


This Study provides information based on the 2024/25 District enrollments and programs, local planning policies and residential development. As these factors change and timelines are adjusted, the Demographic and Enrollment Projections Study should be revised to reflect the most current information.

DRAFT

## METHODOLOGY

The chart below summarizes the inputs to calculate the boundary and school site projections.



The **enrollment projections** for each school are generated using a State standard weighted cohort trend analysis. The basic projections are created by studying the individual geographic areas. Once the trends are analyzed for each area, the base projections are modified using the following procedures:

- Birth rates** are used to project future kindergarten and transitional kindergarten enrollment. It is assumed if the births indicate there was an increase of 4% one year, then there will be a corresponding 4% increase in the kindergarten class five years later or the transitional kindergarten class four years later.
- New Housing Development rates** and **yield rates** are compared to the historical impact of development, and if the future projections exceed the historical values, the projections are augmented accordingly.
- Inter-District student** counts are not included in the base geographic trend analysis since these students reside outside of the District. Therefore, the current number of students-per-school and students-per-grade are added to the base projections.

DRAFT



- d) **Intra-District students** are those who transfer from one school to another. The number of students transferring into and out of each school are calculated and used to determine the difference between the projections for students living in each attendance area versus those that are projected to attend the school.
- e) The projections for **special education students** and **alternative programs** are created by assuming those programs typically serve a percentage of the total District population. Therefore, as the District grows or declines, the enrollment in those programs would increase or decrease accordingly.
- f) **Cohort Trend Analysis:** The number of students living in the boundary are used to generate the cohort factors. The annual trends over the past three years were analyzed and the average cohort was calculated with the current year weighted 50%, the prior year 33.3% and the last year 16.7%. This gives the current trends more value in determining the projections. Those cohorts are then used to determine the students who will be residing in each attendance area for the following years.

**Neighborhood School Attendance Area Analysis:** Each school attendance boundary is input into our GIS (Geographic Information Systems) Software. Students are counted in each of the attendance area boundaries based on their residential address and can be studied to view optimum and balanced utilizations. Attendance pattern maps for each individual boundary will analyze impacts of intra-district transfers from within the district boundary, as well as inter-district transfers from neighboring school districts.

**“TK for All” Initiative:** This report models the growth projected for Transitional Kindergarten in alignment with the recent “TK for All” initiative which follows a phased plan to allow all 4 year olds to attend TK by 2025/26. This includes the assumption that TK will be offered at all sites that currently house K students. The expansion for TK enrollment is based on the following schedule:

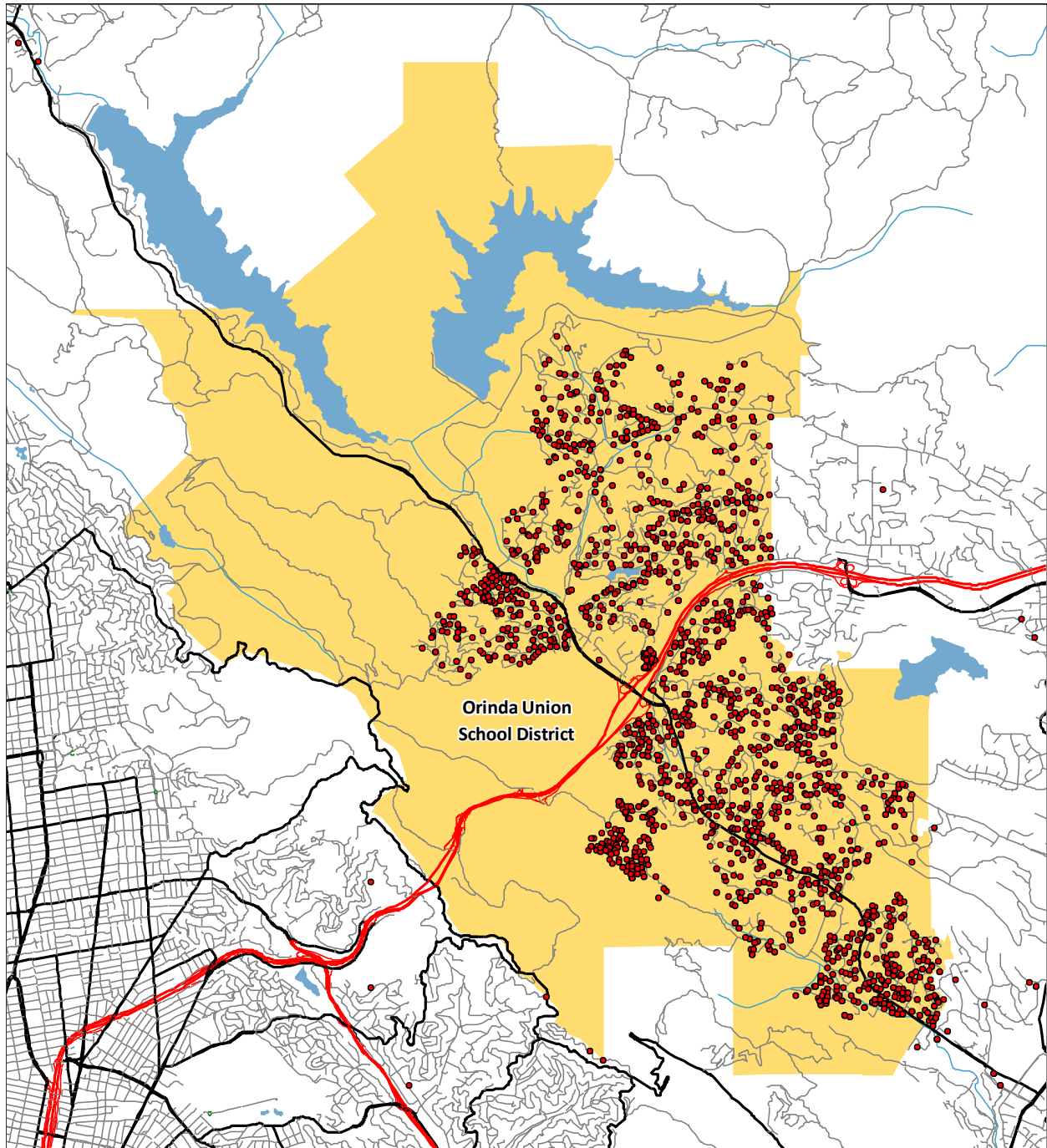
2024/25 – 9 months (Currently eligible)

2025/26 – 12 months (Adds 3 months)

DRAFT

**DISTRICT BOUNDARIES**

**District Map with Student Residential Locations**

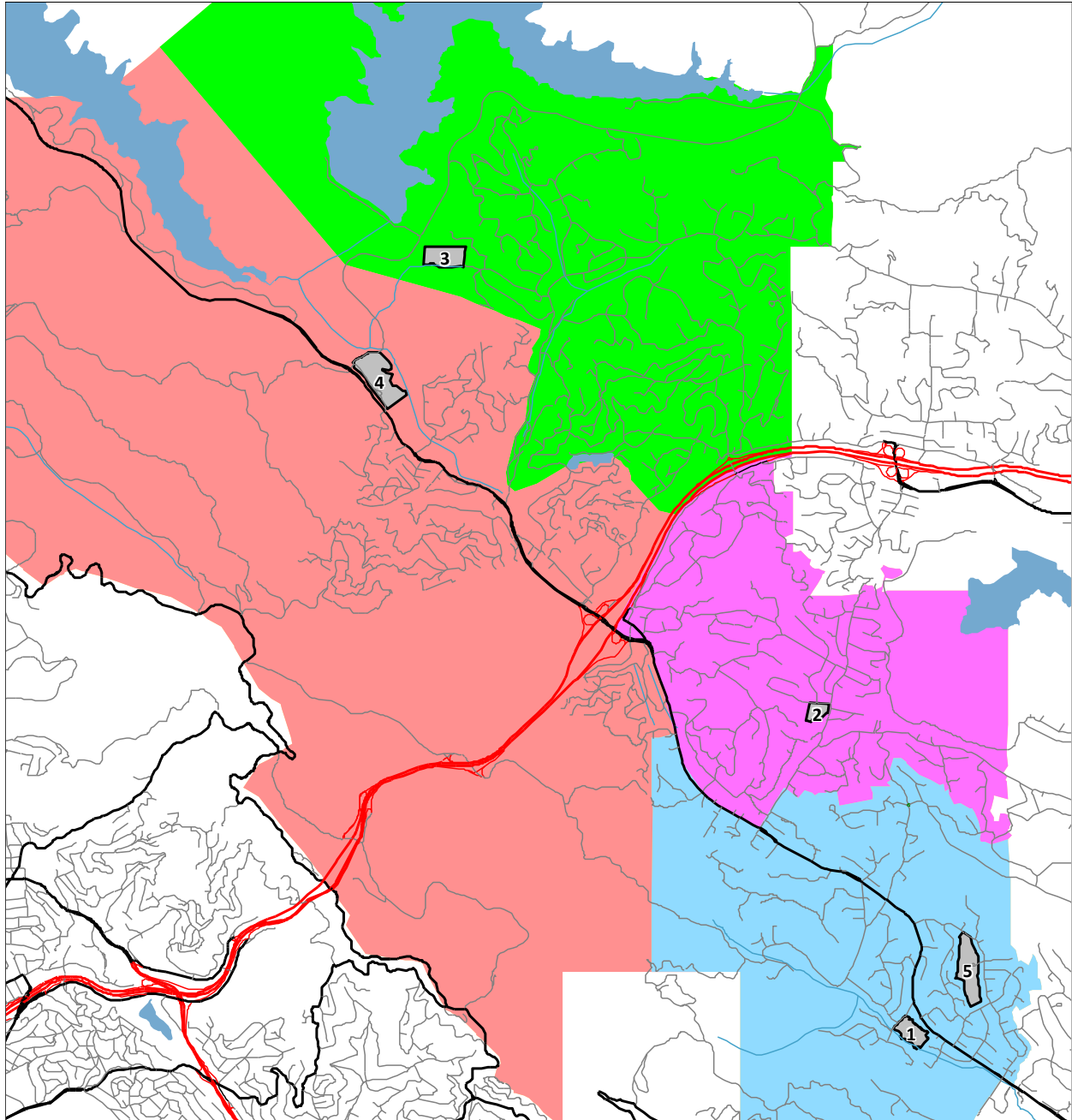


This map shows the District boundary along with the location of each student based on their residential address. This geographic data is the foundation for our demographic analysis. Any red dots outside the District boundary will represent students attending one of the District schools or programs but have a residence outside the District. This map also identifies different areas of student population density.

# Orinda Union School District

## 2024/25 Demographics and Enrollment Projections

### School Locations and Elementary Boundaries



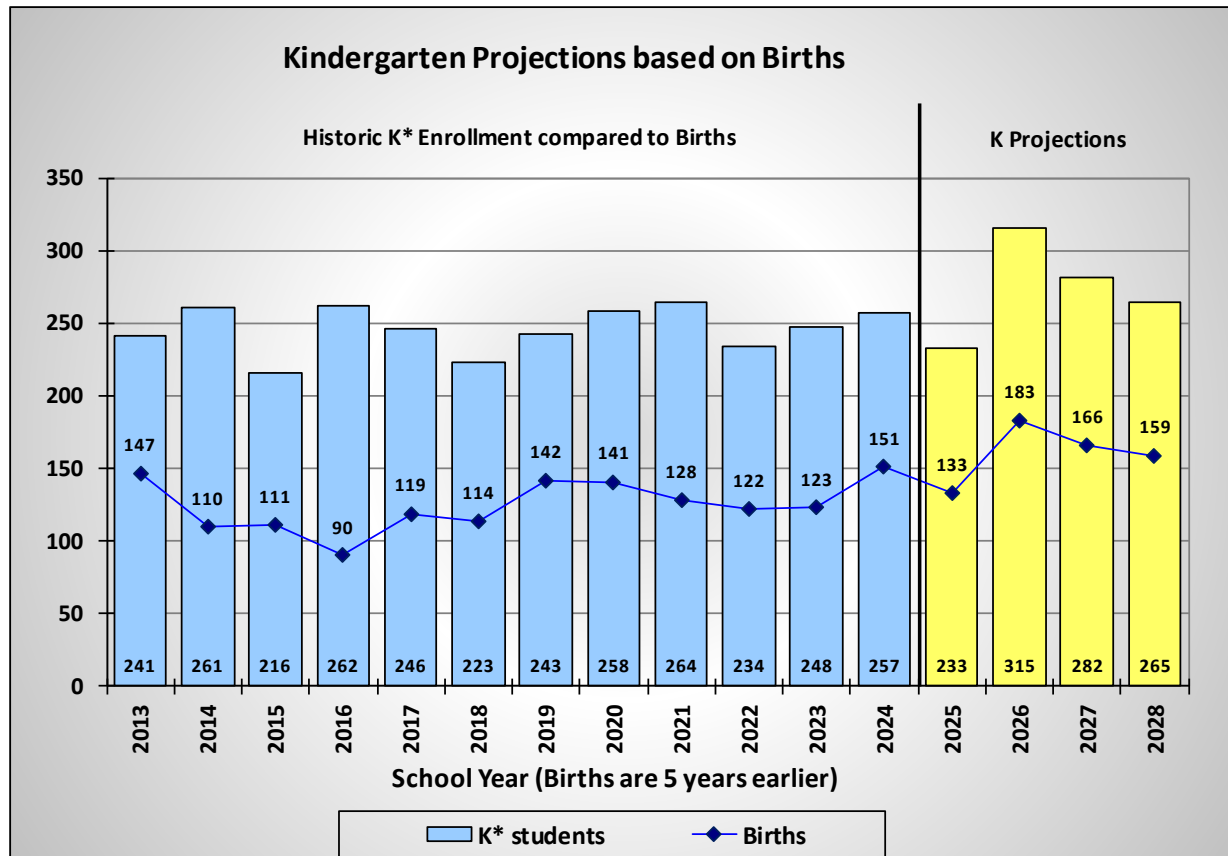
<u>Id</u>	<u>School</u>	<u>Grades</u>	<u>Id</u>	<u>School</u>	<u>Grades</u>
1	Del Rey Elementary	TK-5	4	Wagner Ranch Elementary	TK-5
2	Glorietta Elementary	TK-5	5	Orinda Intermediate	6-8
3	Sleepy Hollow Elementary	TK-5			

Orinda Union School District elementary boundaries are shown in color shaded areas.

DRAFT

### HISTORIC BIRTH RATES

The following section is an analysis of the number of births in the Orinda Union School District. The number of births are compiled by zip code regions and provided by the Department of Health. The zip code areas do not exactly match the District boundaries and therefore the zip code 94563, which is in the District, was used for this analysis.



\*Kindergarten Totals may include some Transitional Kindergarten students for some of the past years to more accurately correlate a 12-month period of births to a 12-month period of enrollment.

The above figure illustrates the correlation between births in the District area and the number of kindergarten students attending Orinda Union schools five years later. The number of births between 2008 and 2019 has averaged about 125 per year. The recent birth rates over the past four years (2020 to 2023), which will generate the kindergarten classes for the next four years (2025 to 2028), have been between 133 and 183. We have assumed a kindergarten capture rate of 180% for the projections.

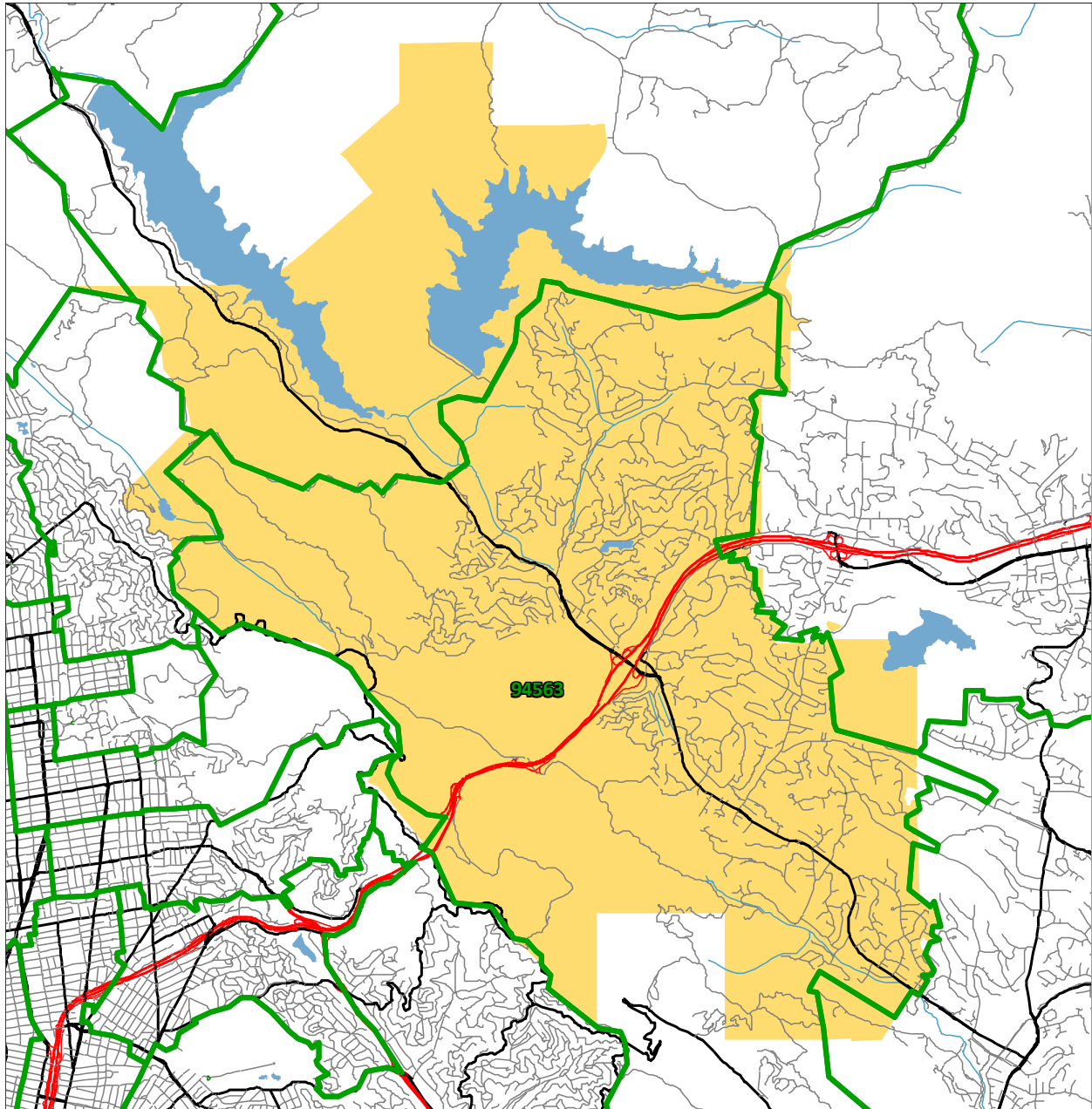
The births in the 94563 zip code have been increasing over the last 12 years (from 119 births in 2012 to 166 births in 2022).

DRAFT

**Orinda Union School District**  
**2024/25 Demographics and Enrollment Projections**

---

**Zip Code Map**



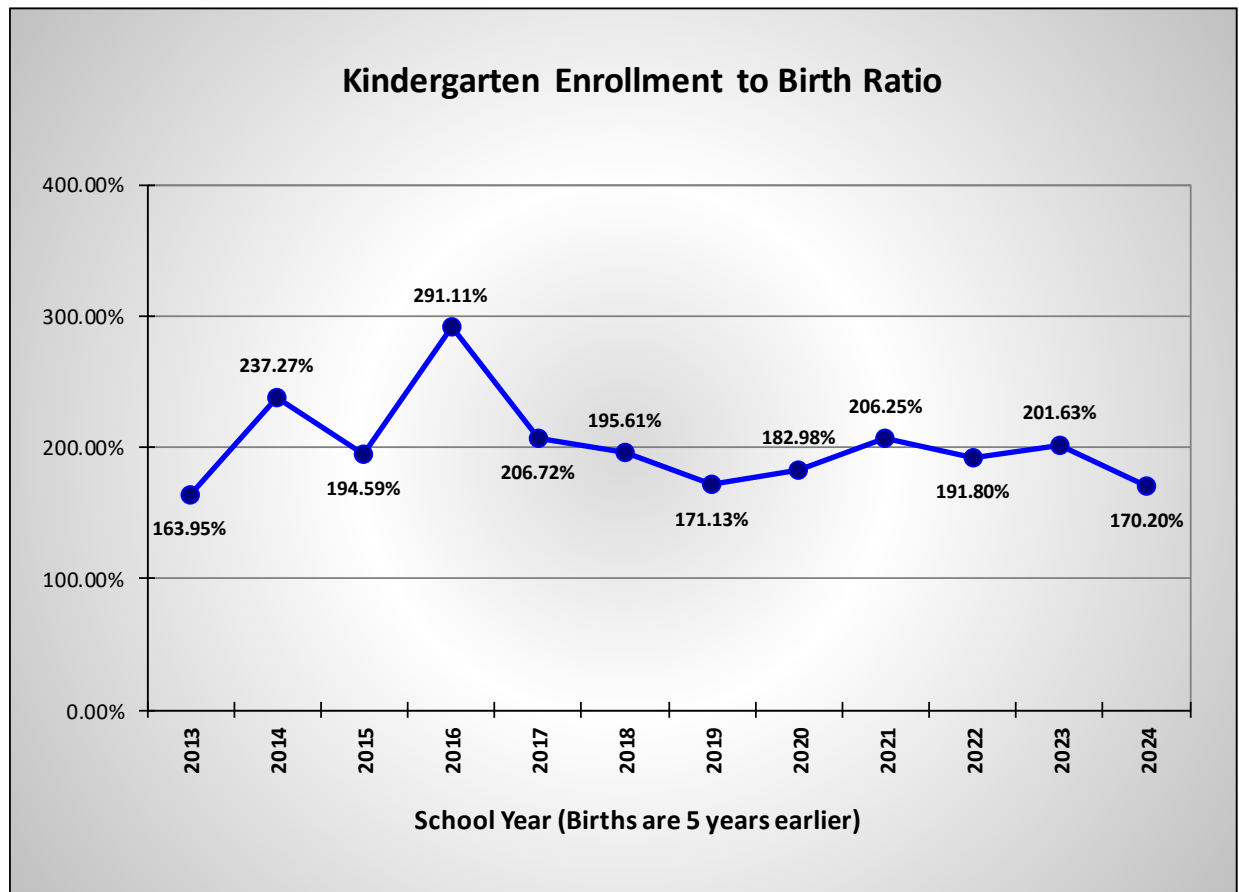
The above map shows the comparison between the District boundaries and the zip codes. The 94563 zip code covers the majority of the District.

DRAFT

# Orinda Union School District

## 2024/25 Demographics and Enrollment Projections

### Historic Kindergarten Capture Rates



This figure shows the kindergarten capture rates for the past 12 years. Since the birth data is derived from zip code areas, which do not exactly match with the District boundaries, the capture rate also accounts for differences in the coverage areas. Low capture rates are common when a district serves only a portion of a large zip code area. A large capture rate is possible when families move into the area after the children were born, but before they arrived for kindergarten. Overall, the District has had a stable capture rate with a 12 year average of 201.10%.

DRAFT



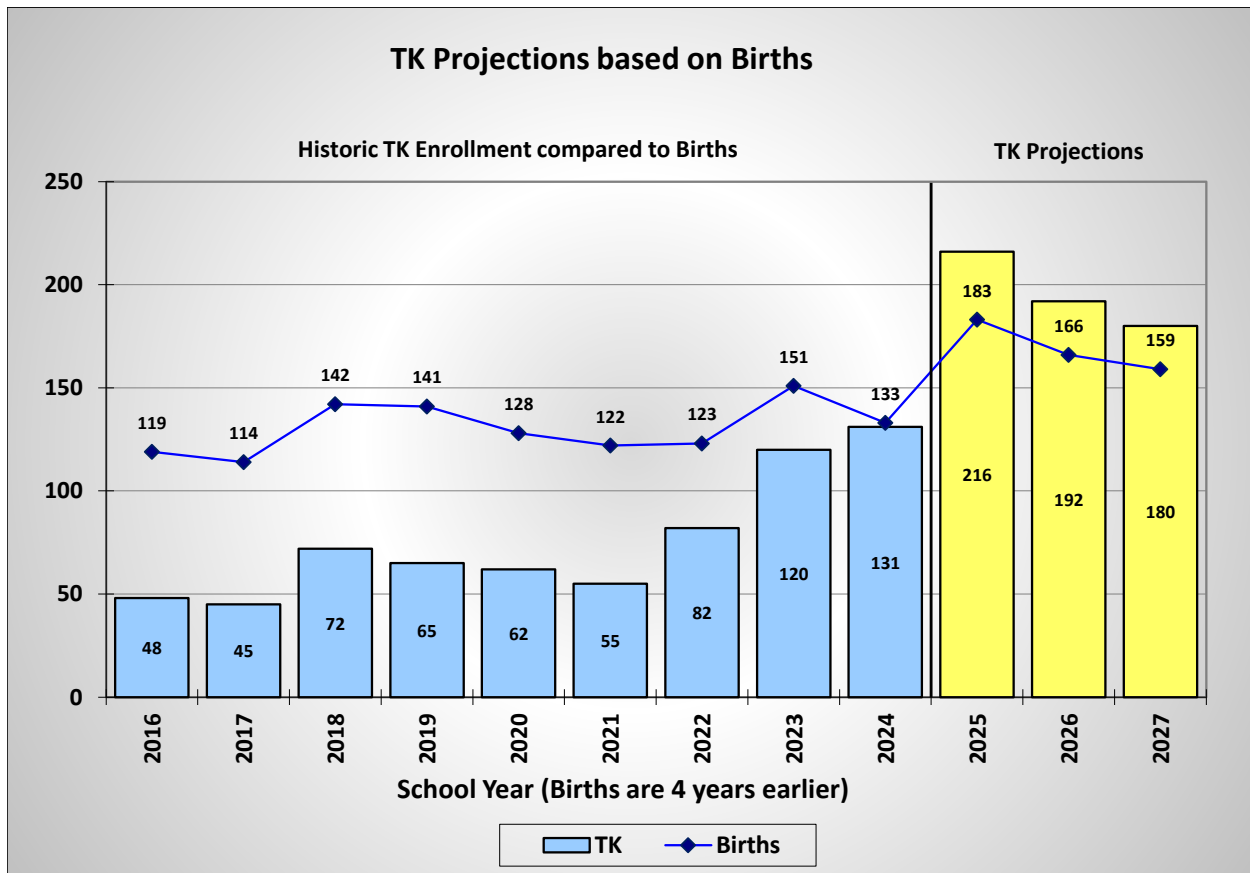
# Orinda Union School District

## 2024/25 Demographics and Enrollment Projections

### Transitional Kindergarten

The Transitional Kindergarten (TK) program started in 2012 to provide an extra year for young children to get ready for kindergarten. Currently, the TK program allows four year-olds who will turn five between September 1 and June 2. Some districts allow parents with children just outside that window to also participate in the program. Since the window for the TK program is only nine months, participation in the TK program is typically less than 75% of the total kindergarten enrollment. In most current state processes, such as CalPADS reporting, the State Building Program, and ADA, TK students are included with the kindergarten numbers.

As mentioned under "Methodology", this report addresses the growth of the TK program by next year to a full grade.



The TK projection for 2025/26 shows a total of 216 students and would be a full grade at that point.

DRAFT

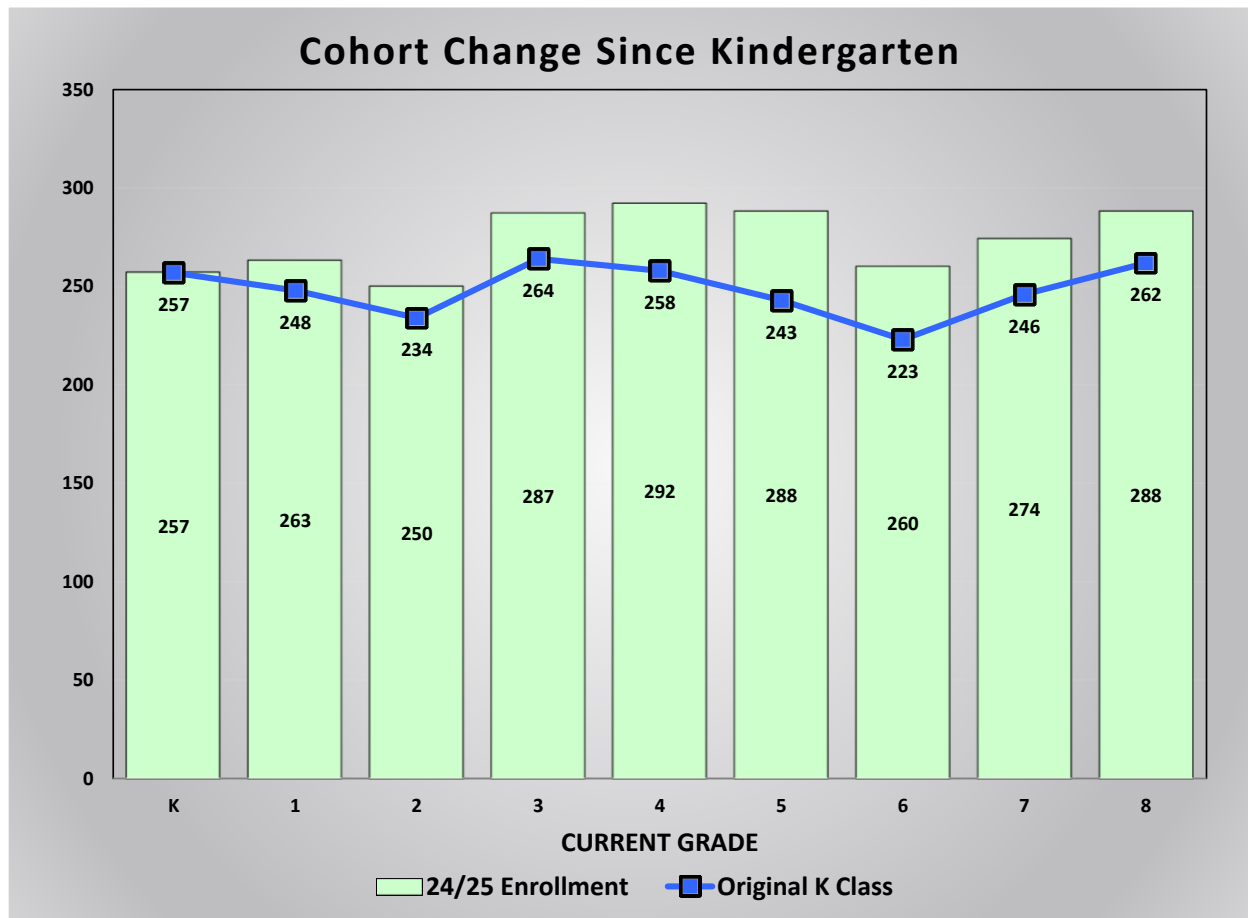
# Orinda Union School District

## 2024/25 Demographics and Enrollment Projections

### TK/K Projection Summary by School

Orinda Union School District TK/K Enrollment Planning								
	25/26		26/27		27/28		28/29	
School	TK	K	TK	K	TK	K	TK	K
Del Rey Elem	63	56	57	75	54	67	53	63
Glorietta Elem	39	59	34	78	31	70	30	66
Sleepy Hollow Elem	54	51	48	69	45	62	44	58
Wagner Ranch Elem	60	67	53	93	50	83	49	78
<b>Totals</b>	<b>216</b>	<b>233</b>	<b>192</b>	<b>315</b>	<b>180</b>	<b>282</b>	<b>176</b>	<b>265</b>

### Retention Rates Since Kindergarten



This chart compares the original kindergarten class size to the current enrollment for each grade. For example, the current 6<sup>th</sup> grade class has 260 students and six years ago the kindergarten class had 223 students. Overall the class sizes have increased since kindergarten.

DRAFT



# Orinda Union School District

## 2024/25 Demographics and Enrollment Projections

### Historic Enrollment and Trends

Orinda Union School District Historic Enrollment and Cohorts								
Grade	CalPADS Enrollment				Historic Cohorts			Weighted Average
	21/22	22/23	23/24	24/25	21 to 22	22 to 23	23 to 24	
T K	55	82	120	131	27	38	11	22.7
K	264	234	248	257	-30	14	9	4.2
1	273	272	243	263	8	9	15	11.8
2	271	281	280	250	8	8	7	7.5
3	256	282	287	287	11	6	7	7.3
4	267	256	285	292	0	3	5	3.5
5	274	272	267	288	5	11	3	6.0
6	261	277	269	260	3	-3	-7	-4.0
7	285	269	282	274	8	5	5	5.5
8	277	286	269	288	1	0	6	3.2
Totals	2,483	2,511	2,550	2,590	4.1	9.1	6.1	6.8
Annual Change:		28	39	40				

This chart shows the enrollment by grade level over the past four years. The cohort values were calculated for each grade and each year, along with the weighted average for each grade. A positive cohort value indicates that grade is expected to have more students than the previous grade last year. A negative value would mean that the grade has fewer students compared to the previous grade last year.

In general, a positive cohort is representative of growth and a negative cohort indicates a decline in enrollment. There are some exceptions. First grade usually has a positive cohort, as there are some students that do not attend kindergarten at public schools but arrive in first grade.

Another important item to notice is the current breakdown by grade level of the student population. Comparing the number of students in the lower grades to the upper grades can indicate potential increases or decreases in future enrollments. Also, if there is a large class or a small class, it will slowly cause a ripple in the enrollments as it advances a grade each year.

Finally, the annual change at the bottom of this chart indicates the net impact of the changes in enrollment over the past few years.

DRAFT

**CLASSROOM COUNTS AND CAPACITY**

It is important to understand that capacity and classroom counts may be viewed different ways for different purposes. The State School Facilities Program (SFP) considers all available teaching stations excluding physical education facilities and core facilities (e.g., libraries, multipurpose rooms, and administrative spaces), as part of the site capacity when calculating eligibility for new construction or modernization funding. The State also has its own loading standards per classroom as part of the eligibility determinations.

Another method for calculating capacity and number of classrooms is based on local District standards of class size and a definition of what is considered a full day teaching station. The District may set aside several classroom spaces defined by the SFP for specialized programs or pull-out spaces.

The classroom counts and capacities defined in this Demographics and Enrollment Projections Study represent the rooms that have been identified by Orinda Union School District administration as designated fulltime teaching stations. This count is a net count and may not take into consideration other rooms which could be used as fulltime teaching stations but are needed for other programs offered by the District.

The classroom counts are shown for each school and are used to determine the capacity. The classroom counts represent the rooms that can be used for teaching purposes at each school site. The classroom counts may not represent the current classrooms being used, as there may be unused rooms on the school site. In some cases, there may be fewer classrooms counted than current teaching stations if some of the rooms being used were designed for other purposes but are currently being used as classrooms due to overcrowding.

DRAFT

**SCHOOL PROJECTIONS**

This Study provides a detailed analysis of student attendance patterns and enrollment for each school. This includes a boundary map illustrating that particular school's attendance patterns along with a chart showing the projected enrollment for the next six years. These charts indicate the actual enrollment at each school over the past four years along with the projected enrollment for the next six years. In addition, the number of students living in the boundary are shown for the same time period. If there are more students attending than live in the area, then there is a net inflow. If more students live in the boundary than attend the school, then there is a net outflow.

The current capacity is shown on these charts to identify if there will be classroom space available for the students. If space is not available, then the attendance patterns will likely need to change if the additional facilities are not provided. The capacity for each school was determined by using the following loading standards for each classroom identified:

<b><u>Grade</u></b>	<b><u>Loading Standard</u></b>
TK	20
K	22
1-3	22
4-6	26
7-8	26

These loading standards are based on the current loading factors used this year and may change based on the level of funding for schools in the future.

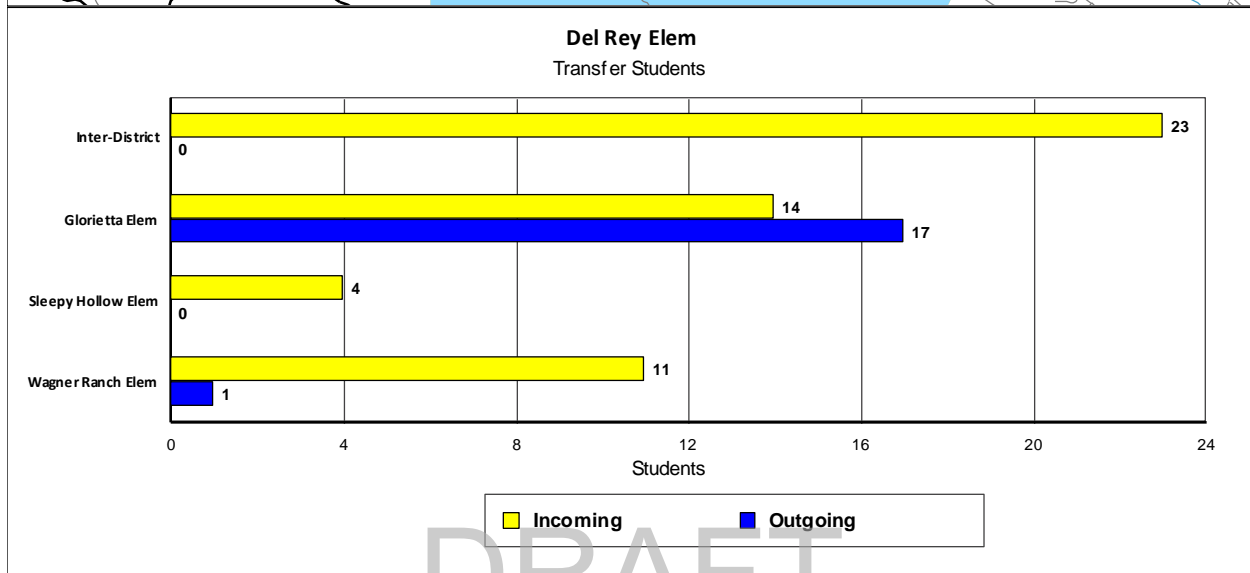
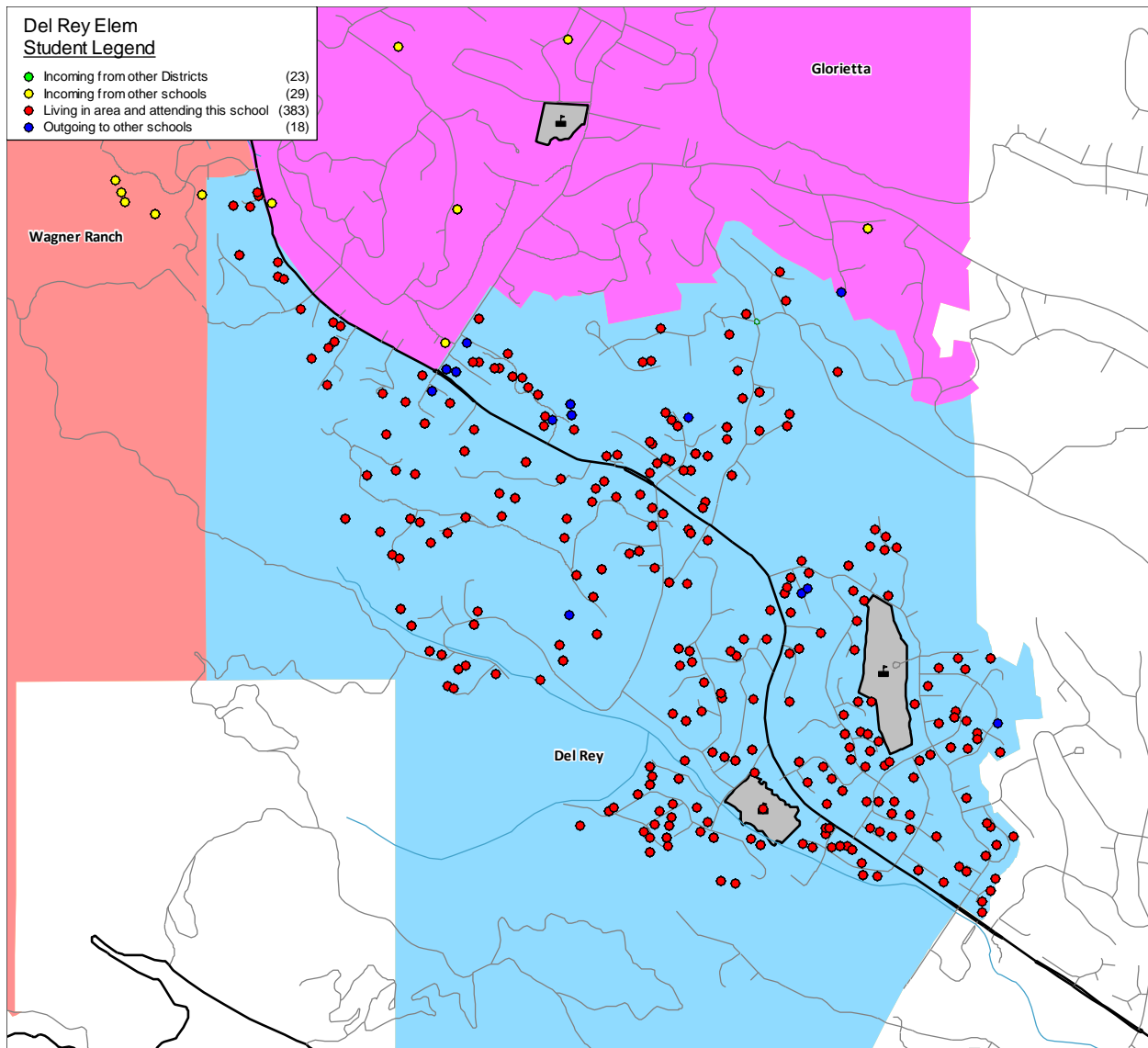
Detailed data is provided below each projection chart that shows the projected enrollment by grade for the next six years.

The Attendance Factors were determined by analyzing the current year of students to see how many Inter- and Intra-District transfers there are. Once the baseline projections are calculated for the residents in the attendance area, the Intra-District and Inter-District factors are applied to determine the projected enrollment for each school.

DRAFT

# Orinda Union School District

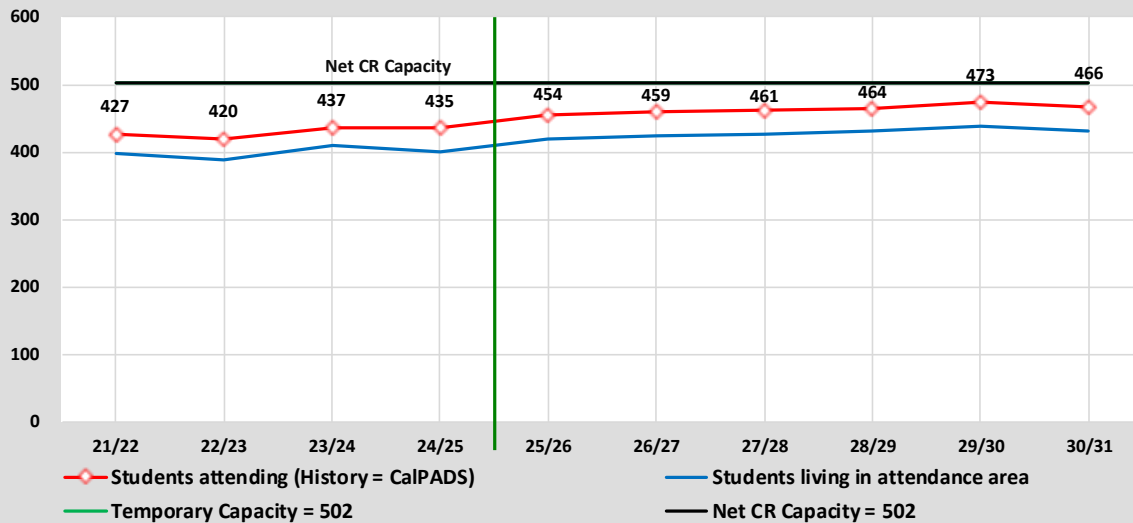
## 2024/25 Demographics and Enrollment Projections



# Orinda Union School District

## 2024/25 Demographics and Enrollment Projections

### Capacity & Projected Enrollment Del Rey Elem



District Loading Standards  
Traditional School  
All Portables Loaded  
Net Classroom Count = 22  
Grades Served = TK - 5

### Classroom Needs Timeline

Year	Total Students*	Annual Change	Spec. Ed. Students	Net CR Capacity	New Seats Needed	Annual CR Needed	Total CR's Needed	Available Seats	Projected Housing Units
24/25	435	-2	0	502	0	0	-3	67	
25/26	454	19	0	502	0	0	-1	48	0
26/27	459	5	0	502	0	0	-2	43	0
27/28	461	2	0	502	0	0	-1	41	0
28/29	464	3	0	502	0	0	-1	38	0
29/30	473	9	0	502	0	0	-2	29	0
30/31	466	-7	0	502	0	0	-2	36	0

\* Based on Students Attending (Squares on Graph)  
Net Classroom Count = 22

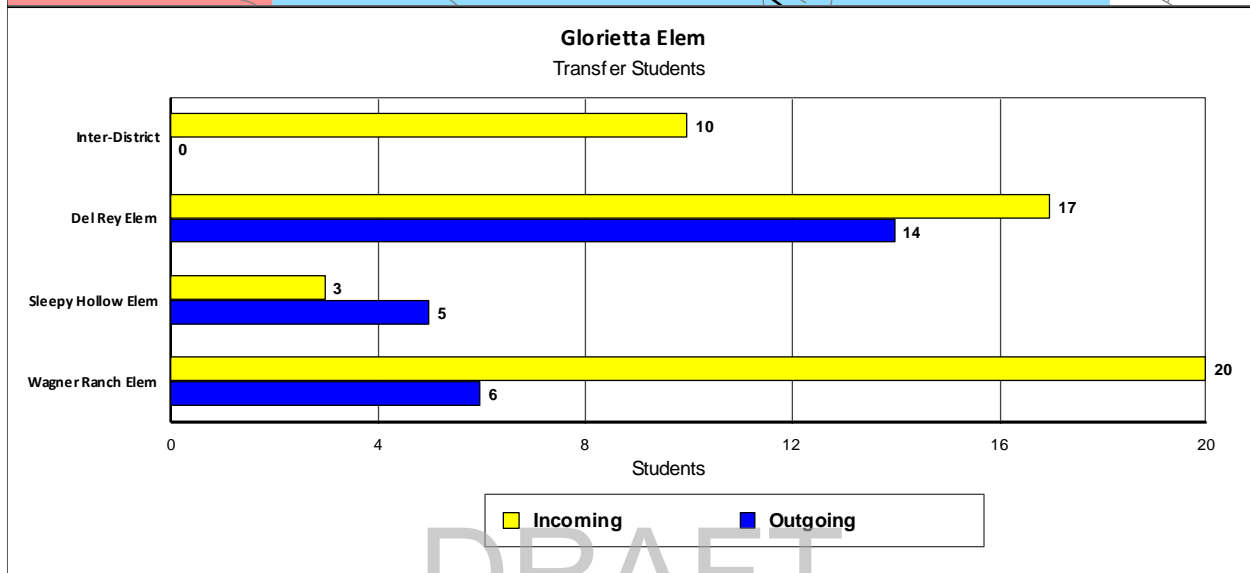
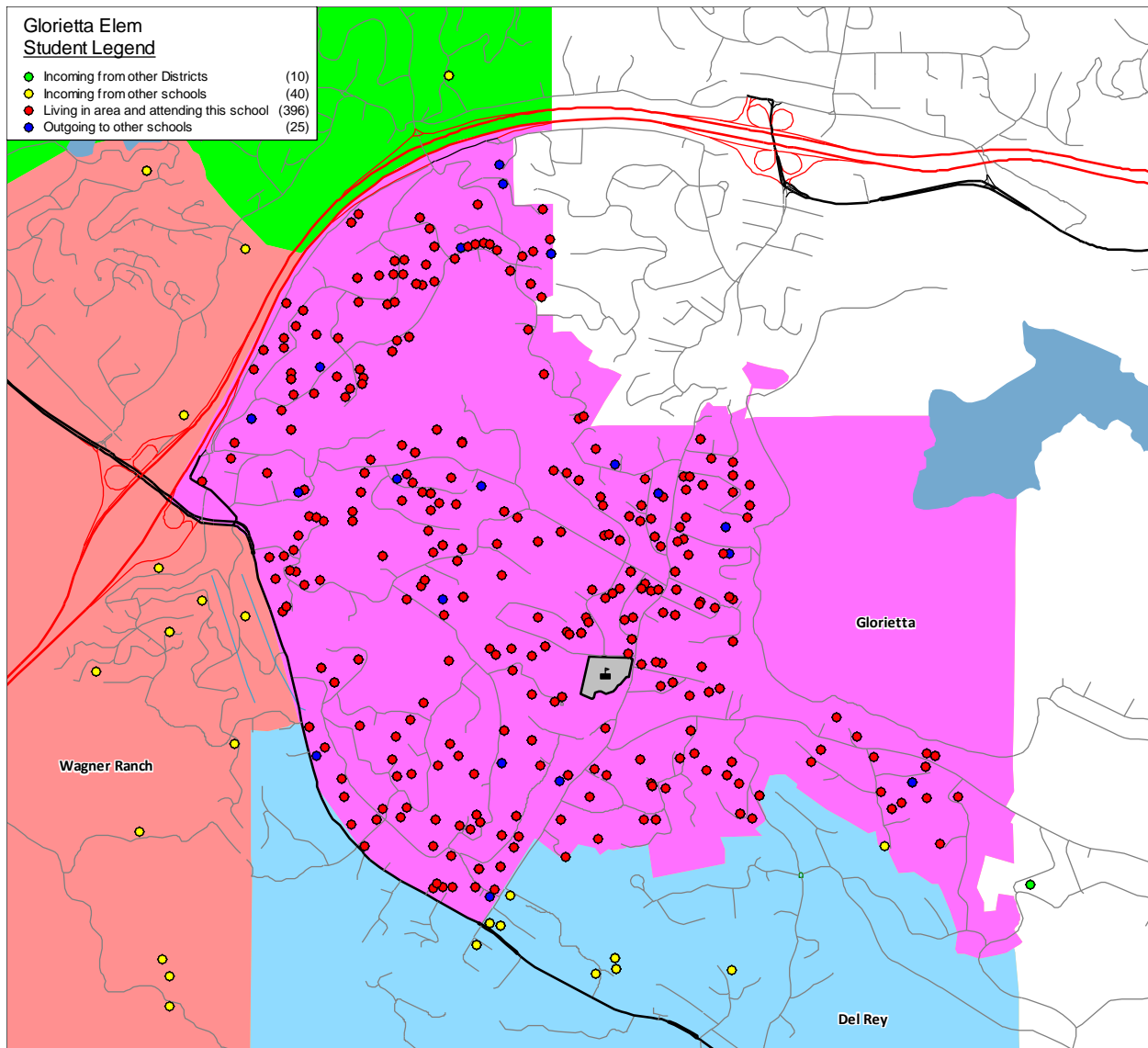
### Del Rey Elem

YEAR: Grade	Current 24/25	Projected Enrollment						Cohort Average	Attendance Factors	
	24/25	25/26	26/27	27/28	28/29	29/30	30/31		Intra	Inter
T K	35	63	57	54	53	52	51	0	5	2
K	67	56	75	67	63	62	61	0	0	1
1	54	69	58	77	69	65	64	1	-1	4
2	63	56	71	60	79	71	67	2	2	2
3	69	66	59	74	63	82	74	3	0	5
4	75	73	70	63	78	67	86	1	4	5
5	72	71	69	66	59	74	63	1	1	4
<b>Totals</b>	<b>435</b>	<b>454</b>	<b>459</b>	<b>461</b>	<b>464</b>	<b>473</b>	<b>466</b>	<b>1.1</b>	<b>11</b>	<b>23</b>

DRAFT

# Orinda Union School District

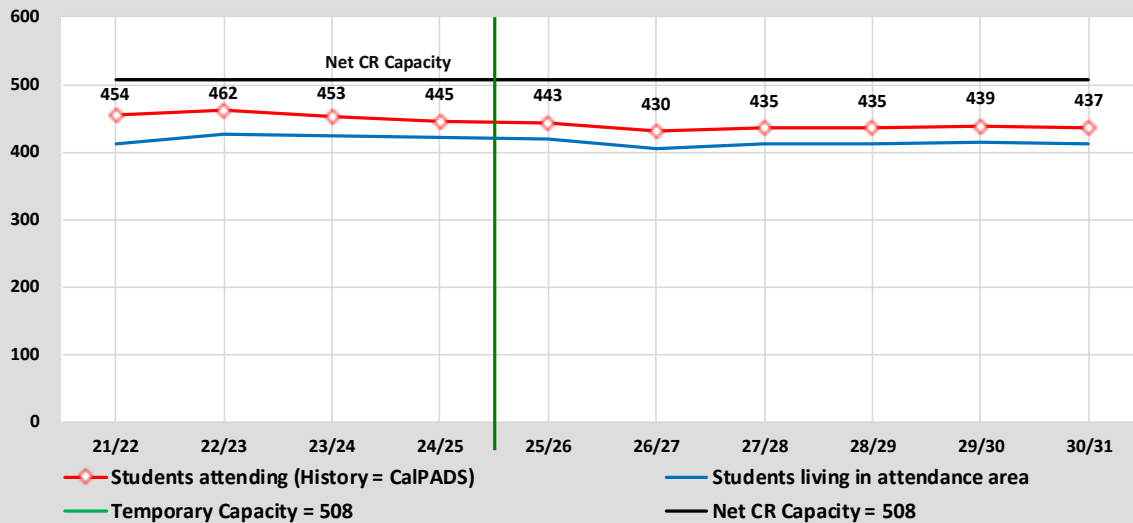
## 2024/25 Demographics and Enrollment Projections



# Orinda Union School District

## 2024/25 Demographics and Enrollment Projections

### Capacity & Projected Enrollment Glorietta Elem



District Loading Standards  
 Traditional School  
 All Portables Loaded  
 Net Classroom Count = 22  
 Grades Served = TK - 5

### Classroom Needs Timeline

Year	Total Students*	Annual Change	Spec. Ed. Students	Net CR Capacity	New Seats Needed	Annual CR Needed	Total CR's Needed	Available Seats	Projected Housing Units
24/25	445	-8	0	508	0	0	-3	63	
25/26	443	-2	0	508	0	0	-2	65	0
26/27	430	-13	0	508	0	0	-3	78	0
27/28	435	5	0	508	0	0	-3	73	0
28/29	435	0	0	508	0	0	-2	73	0
29/30	439	4	0	508	0	0	-3	69	0
30/31	437	-2	0	508	0	0	-4	71	0

\* Based on Students Attending (Squares on Graph)  
 Net Classroom Count = 22

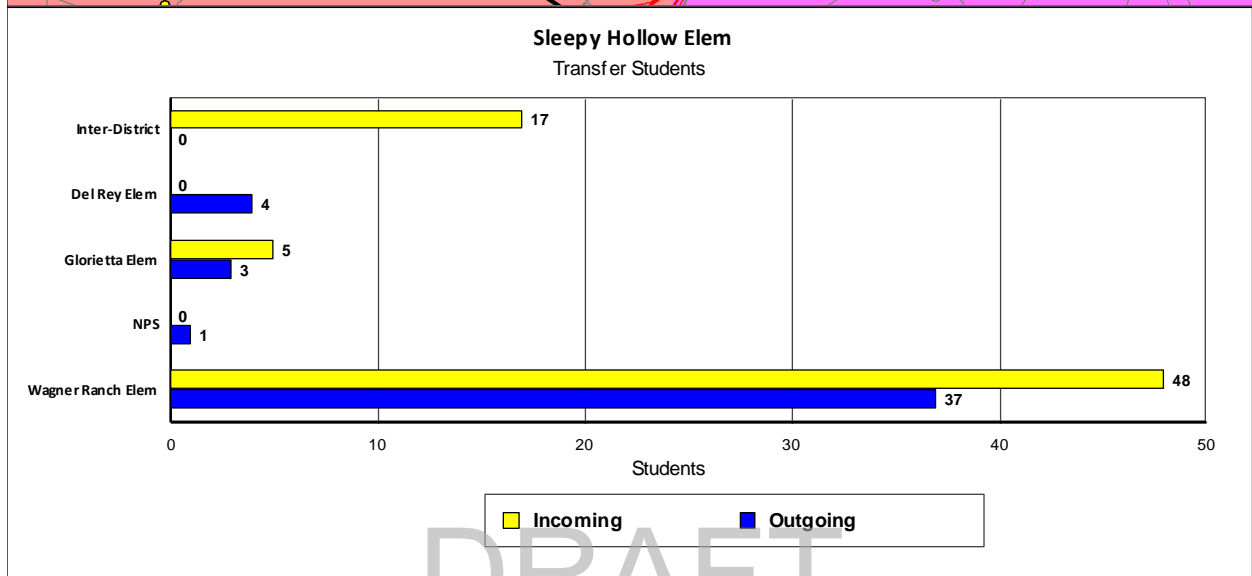
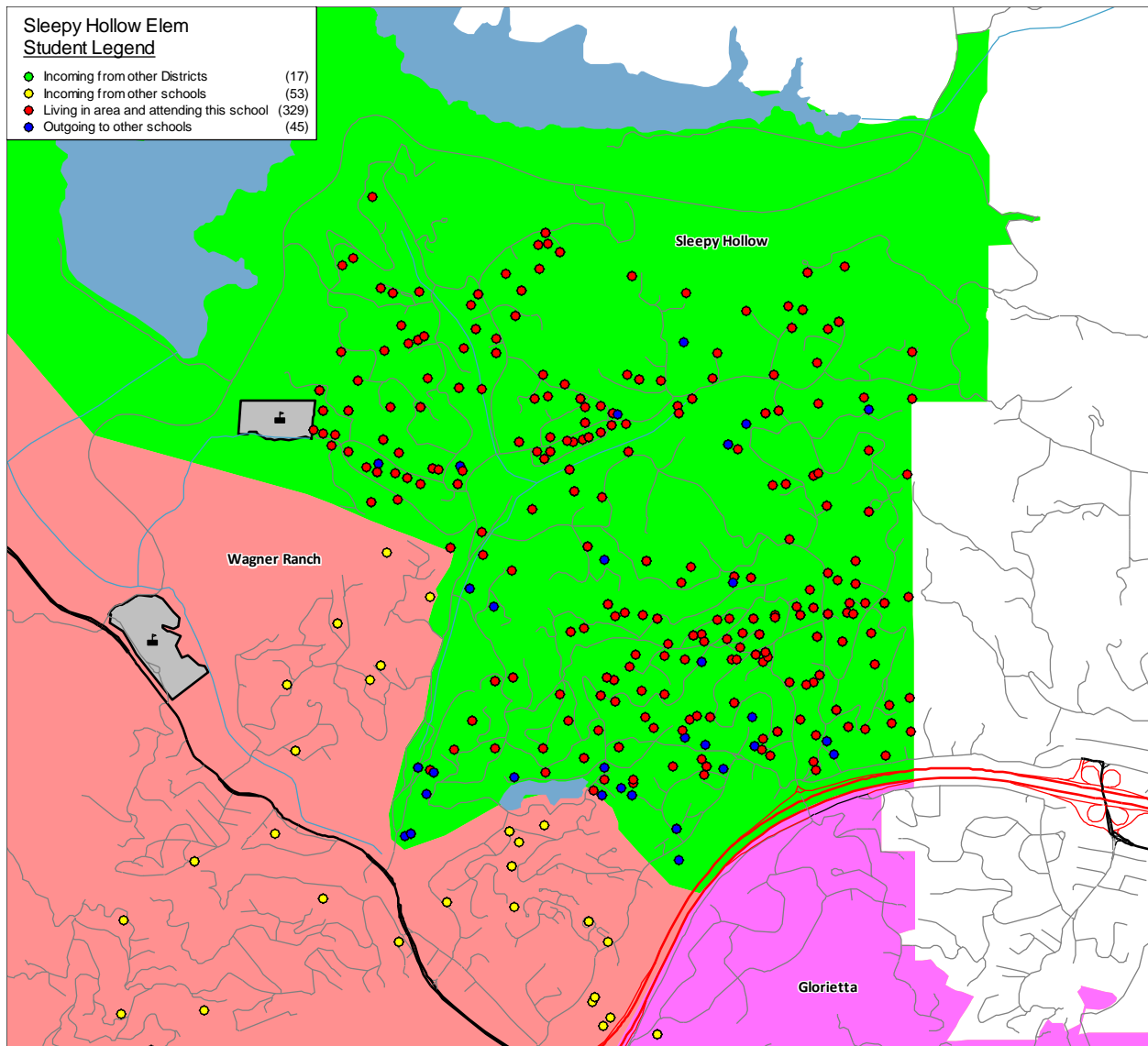
### Glorietta Elem

YEAR: Grade	Current 24/25	Projected Enrollment						Cohort Average	Attendance Factors	
	24/25	25/26	26/27	27/28	28/29	29/30	30/31		Intra	Inter
T K	22	39	34	31	30	29	28	0	-4	0
K	65	59	78	70	66	65	64	0	4	2
1	62	67	61	80	72	68	67	2	6	1
2	64	59	64	58	77	69	65	1	3	1
3	64	67	62	67	61	80	72	3	4	1
4	86	62	65	60	65	59	78	2	-3	5
5	82	90	66	69	64	69	63	3	4	0
Totals	445	443	430	435	435	439	437	1.6	14	10

DRAFT

# Orinda Union School District

## 2024/25 Demographics and Enrollment Projections

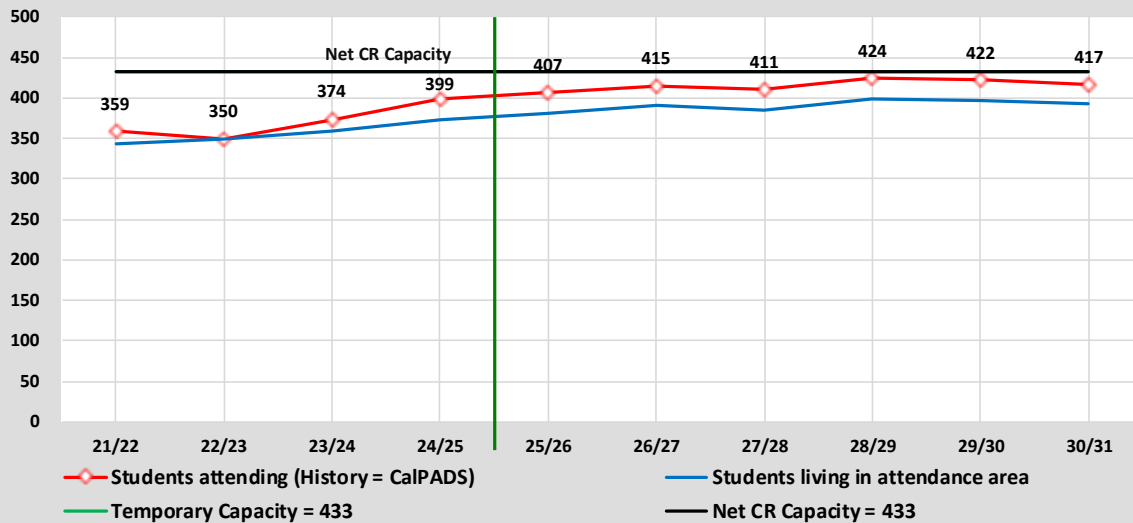




# Orinda Union School District

## 2024/25 Demographics and Enrollment Projections

### Capacity & Projected Enrollment Sleepy Hollow Elem



### Classroom Needs Timeline

Year	Total Students*	Annual Change	Spec. Ed. Students	Net CR Capacity	New Seats Needed	Annual CR Needed	Total CR's Needed	Available Seats	Projected Housing Units
24/25	399	25	0	433	0	0	-2	34	
25/26	407	8	0	433	0	0	-1	26	0
26/27	415	8	0	433	0	0	0	18	0
27/28	411	-4	0	433	0	0	-1	22	0
28/29	424	13	0	433	0	0	0	9	0
29/30	422	-2	0	433	0	0	-1	11	0
30/31	417	-5	0	433	0	0	0	16	0

\* Based on Students Attending (Squares on Graph)  
 Net Classroom Count = 19

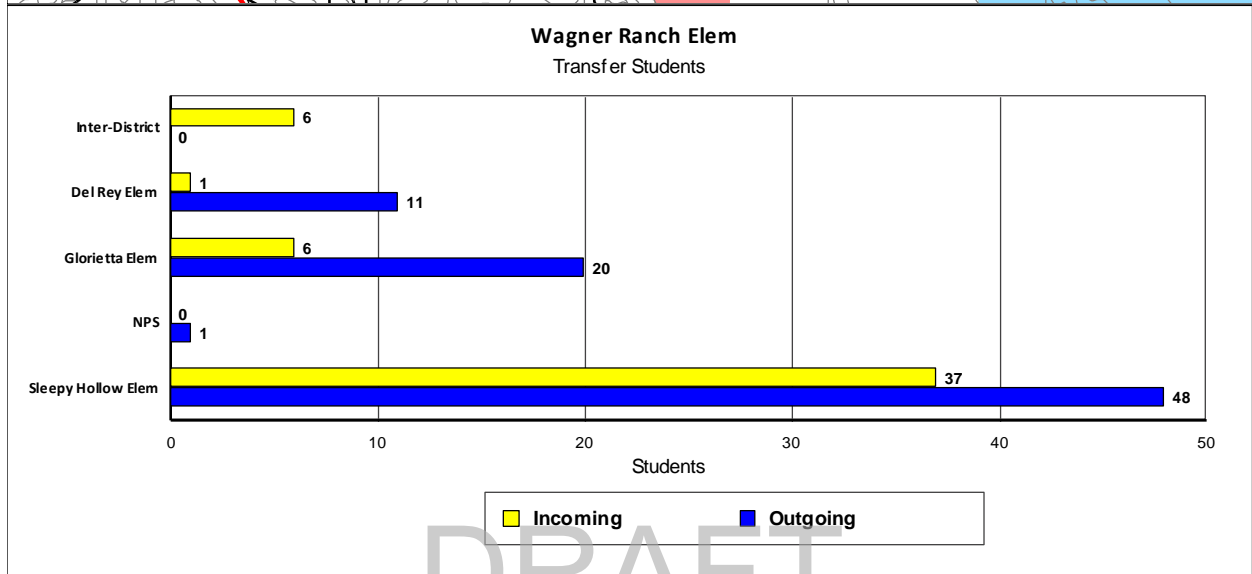
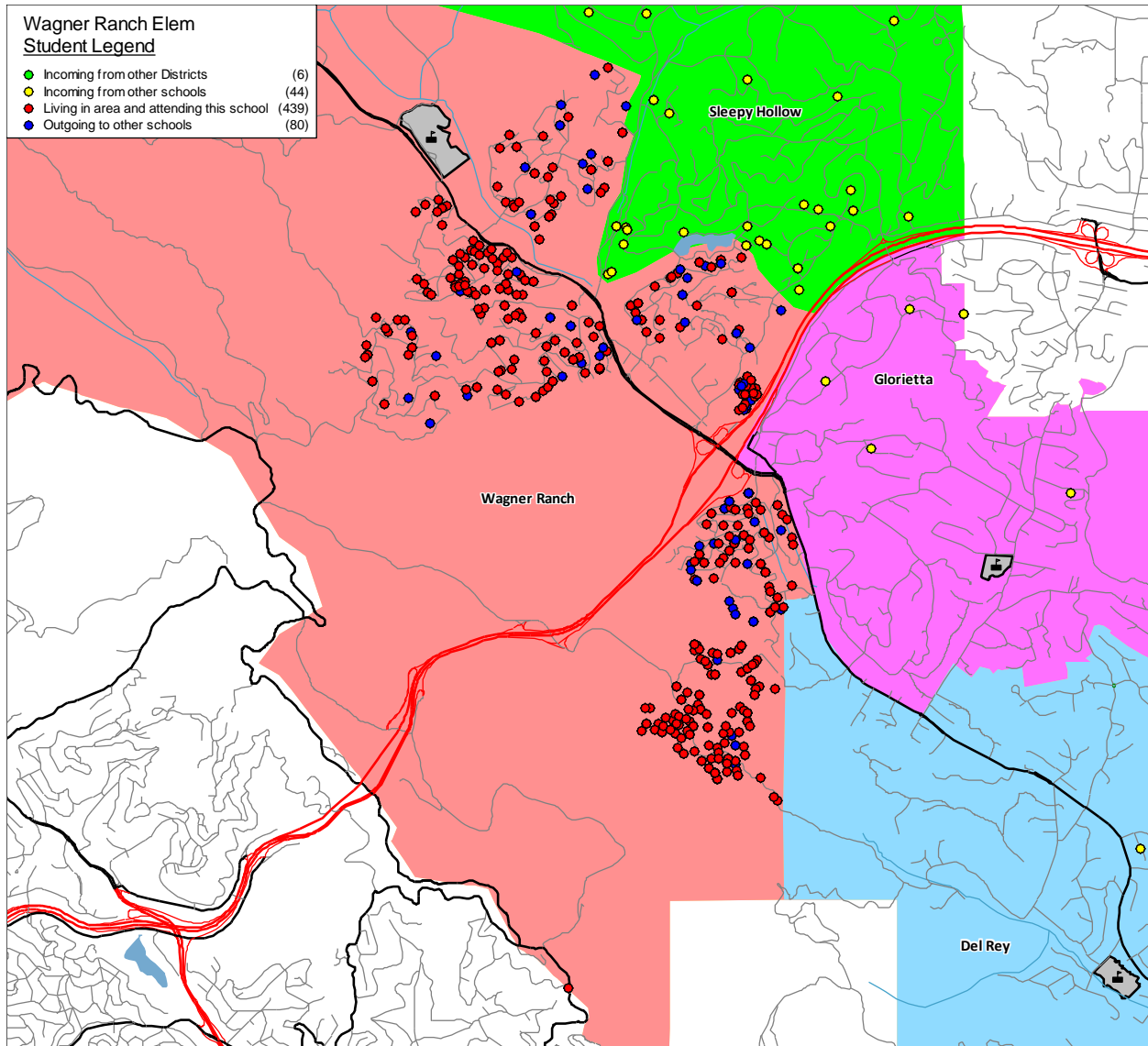
### Sleepy Hollow Elem

YEAR: Grade	Current 24/25	Projected Enrollment						Cohort Average	Attendance Factors	
	24/25	25/26	26/27	27/28	28/29	29/30	30/31		Intra	Inter
T K	34	54	48	45	44	43	42	0	2	1
K	60	51	69	62	58	57	56	0	1	0
1	61	63	54	72	65	61	60	1	3	1
2	55	69	71	62	80	73	69	3	4	6
3	68	49	63	65	56	74	67	1	4	0
4	58	66	47	61	63	54	72	1	-1	3
5	63	55	63	44	58	60	51	-1	-5	6
<b>Totals</b>	<b>399</b>	<b>407</b>	<b>415</b>	<b>411</b>	<b>424</b>	<b>422</b>	<b>417</b>	<b>0.7</b>	<b>8</b>	<b>17</b>

DRAFT

# Orinda Union School District

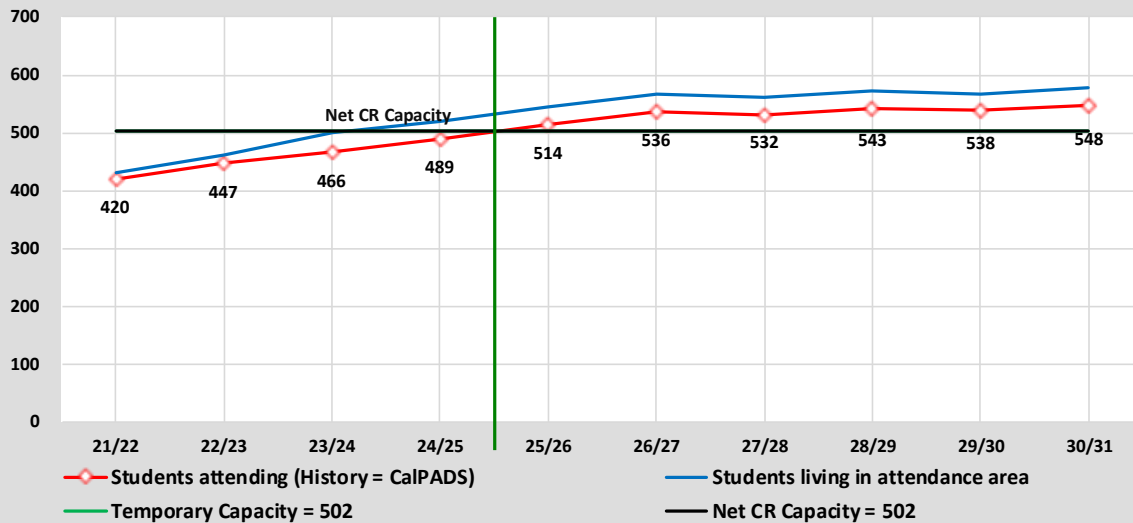
## 2024/25 Demographics and Enrollment Projections



# Orinda Union School District

## 2024/25 Demographics and Enrollment Projections

### Capacity & Projected Enrollment Wagner Ranch Elem



District Loading Standards  
Traditional School  
All Portables Loaded  
Net Classroom Count = 22  
Grades Served = TK - 5

### Classroom Needs Timeline

Year	Total Students*	Annual Change	Spec. Ed. Students	Net CR Capacity	New Seats Needed	Annual CR Needed	Total CR's Needed	Available Seats	Projected Housing Units
24/25	489	23	0	502	0	0	0	13	
25/26	514	25	0	502	12	0	0	0	0
26/27	536	22	0	502	34	1	1	0	0
27/28	532	-4	0	502	30	0	1	0	0
28/29	543	11	0	502	41	0	1	0	0
29/30	538	-5	0	502	36	1	2	0	0
30/31	548	10	0	502	46	0	2	0	0

\* Based on Students Attending (Squares on Graph)  
Net Classroom Count = 22

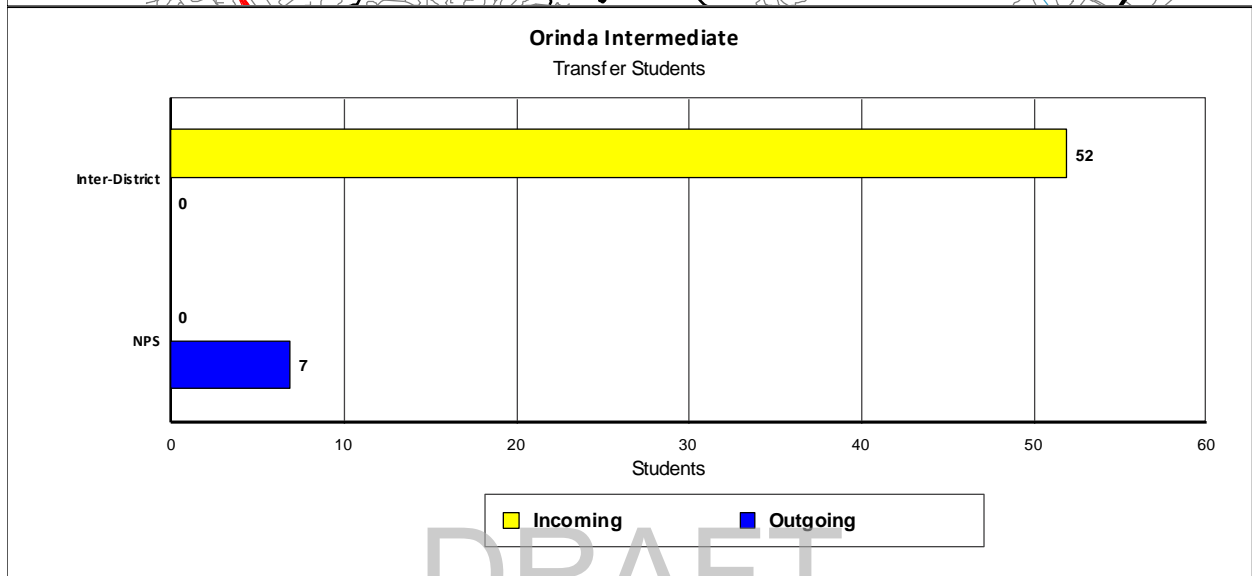
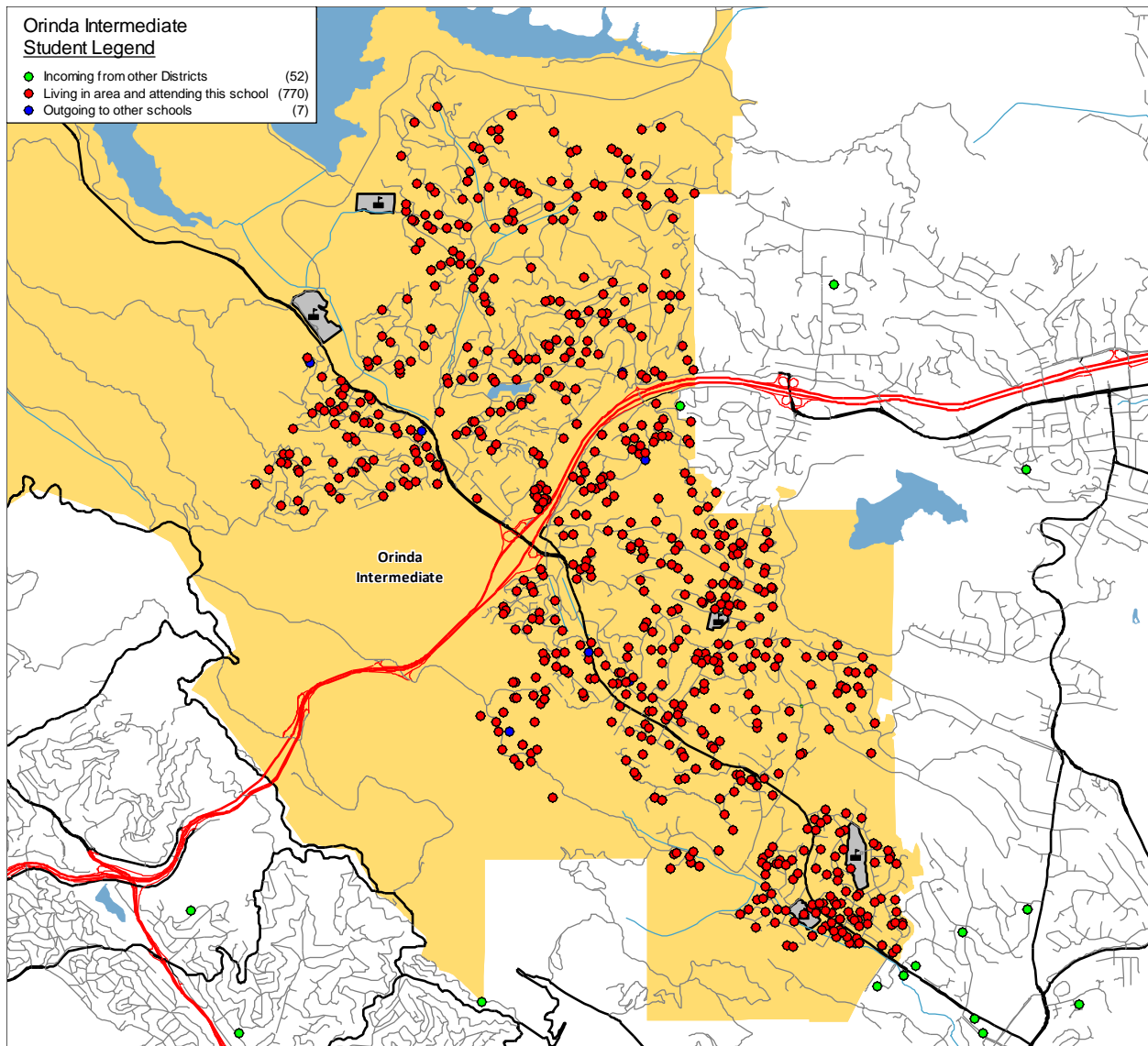
### Wagner Ranch Elem

YEAR: Grade	Current 24/25	Projected Enrollment						Cohort Average	Attendance Factors	
		25/26	26/27	27/28	28/29	29/30	30/31		Intra	Inter
T K	40	60	53	50	49	48	47	0	-4	1
K	65	67	93	83	78	77	76	0	-6	0
1	86	70	72	98	88	83	82	5	-8	3
2	68	83	67	69	95	85	80	2	-9	0
3	86	68	83	67	69	95	85	0	-8	0
4	73	93	75	90	74	76	102	-1	-1	2
5	71	73	93	75	90	74	76	2	0	0
<b>Totals</b>	<b>489</b>	<b>514</b>	<b>536</b>	<b>532</b>	<b>543</b>	<b>538</b>	<b>548</b>	<b>1.1</b>	<b>-36</b>	<b>6</b>

DRAFT

# Orinda Union School District

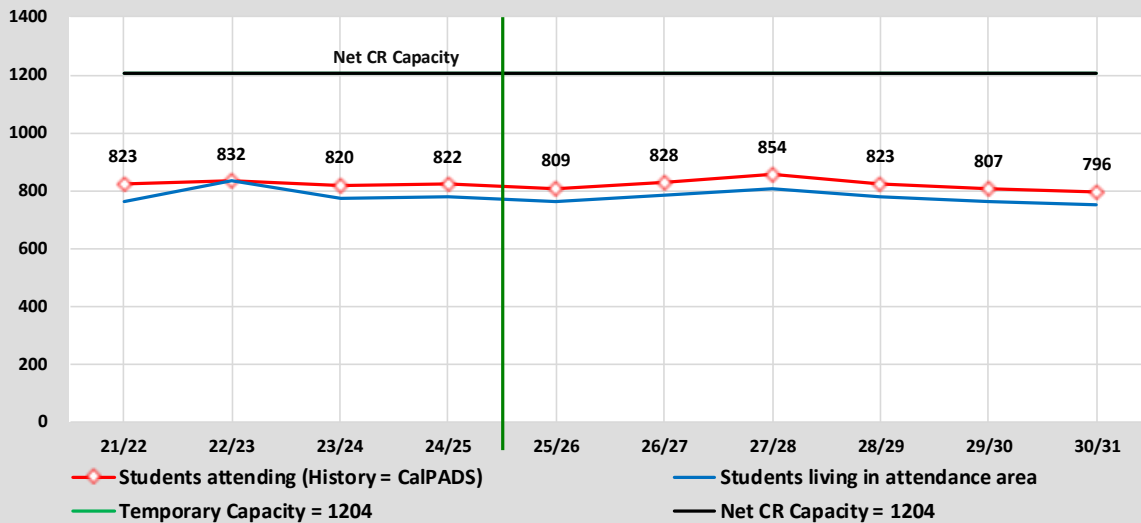
## 2024/25 Demographics and Enrollment Projections



# Orinda Union School District

## 2024/25 Demographics and Enrollment Projections

### Capacity & Projected Enrollment Orinda Intermediate



District Loading Standards  
 Traditional School  
 All Portables Loaded  
 Net Classroom Count = 43  
 Grades Served = 6 - 8

### Classroom Needs Timeline

Year	Total Students*	Annual Change	Spec. Ed. Students	Net CR Capacity	New Seats Needed	Annual CR Needed	Total CR's Needed	Available Seats	Projected Housing Units
24/25	822	2	0	1204	0	0	-14	382	
25/26	809	-13	0	1204	0	0	-14	395	0
26/27	828	19	0	1204	0	0	-14	376	0
27/28	854	26	0	1204	0	0	-13	350	0
28/29	823	-31	0	1204	0	0	-14	381	0
29/30	807	-16	0	1204	0	0	-14	397	0
30/31	796	-11	0	1204	0	0	-14	408	0

\* Based on Students Attending (Squares on Graph)  
 Net Classroom Count = 43

### Orinda Intermediate

YEAR: Grade	Current 24/25	Projected Enrollment						Cohort Average	Attendance Factors	
		25/26	26/27	27/28	28/29	29/30	30/31		Intra	Inter
6	260	281	283	286	250	267	275	-5	-1	12
7	274	270	291	293	296	260	277	3	-3	24
8	288	258	254	275	277	280	244	-5	-3	16
<b>Totals</b>	<b>822</b>	<b>809</b>	<b>828</b>	<b>854</b>	<b>823</b>	<b>807</b>	<b>796</b>	<b>-2.3</b>	<b>-7</b>	<b>52</b>

DRAFT

# Orinda Union School District

## 2024/25 Demographics and Enrollment Projections

### Student Attendance Matrix

ATTENDANCE MATRIX							
		SCHOOL OF ATTENDANCE					
		Del Rey Elem	Glorietta Elem	Sleepy Hollow Elem	Wagner Ranch Elem	Orinda Intermediate	Total Residing
R E S I D E N C E	SCHOOL: <u>AREA</u>						
	Inter-District	23	10	17	6	52	108
	Del Rey Elem	383	17	0	1	0	401
	Glorietta Elem	14	396	5	6	0	421
	Sleepy Hollow Elem	4	3	329	37	0	373
	Wagner Ranch Elem	11	20	48	439	0	518
	Orinda Intermediate	0	0	0	0	770	770
	Correction Factor*	0	-1	0	0	0	-1
	Total Attending	435	445	399	489	822	2,590
Intra-Ins		29	40	53	44	0	166
Inter-Ins		23	10	17	6	52	108
Total In-Flow		52	50	70	50	52	274
Intra-Outs		18	25	44	79	0	166
Net Transfers		34	25	26	-29	52	108
% In-Flow Students		12.0%	11.2%	17.5%	10.2%	6.3%	10.6%
% Out-Flow Students		4.5%	5.9%	11.8%	15.3%	0.0%	6.4%

\* The correction factor represents the difference between the student data download counts and the actual CaIPADS counts.

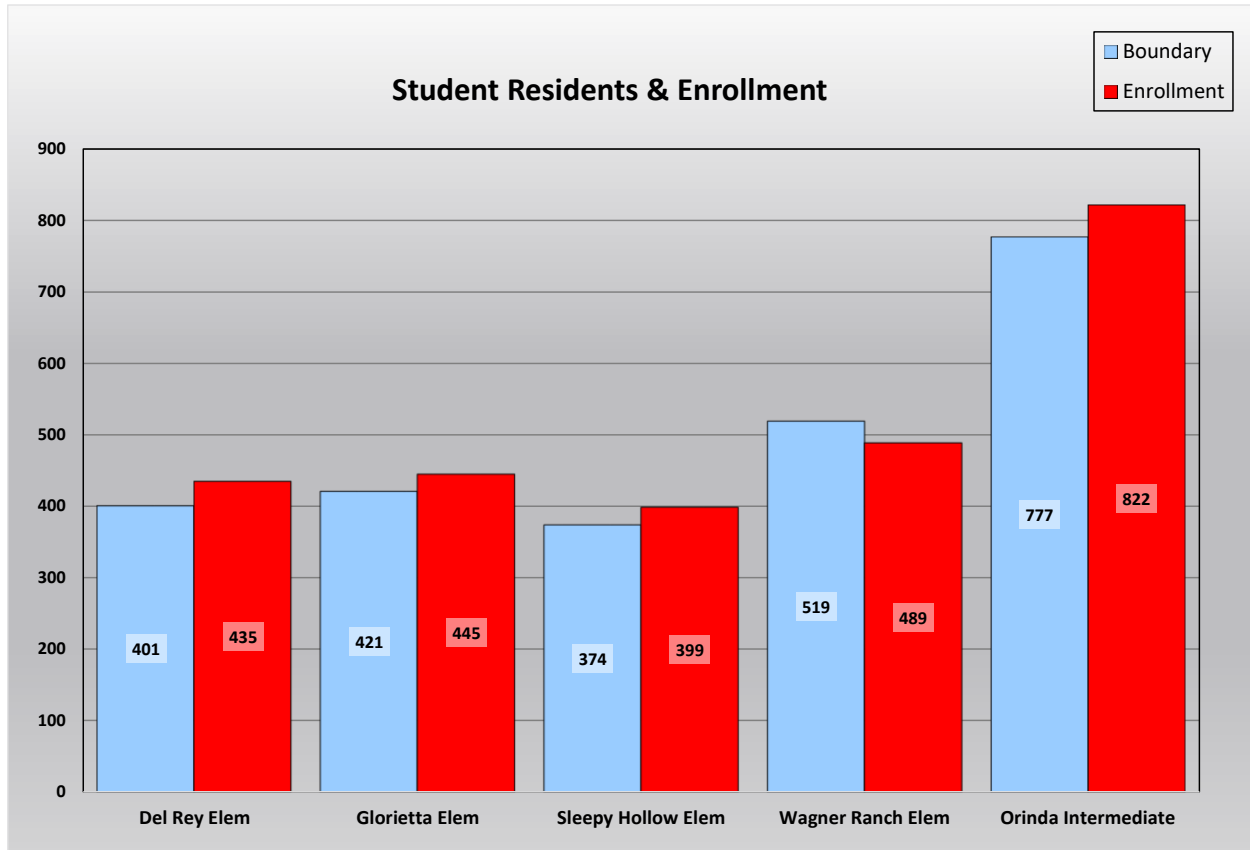
This chart summarizes the transfers in and out of each school as were seen by the yellow dots and blue dots on the school attendance maps. In addition, the data has been analyzed to determine the total in-flow and out-flow rates for each school. The school with the largest in-flow rate is Sleepy Hollow Elementary and the school with the largest out-flow rate is Wagner Ranch Elementary.

DRAFT

# Orinda Union School District

## 2024/25 Demographics and Enrollment Projections

### Student Residency and Enrollment Comparison



This chart compares each individual school enrollment to the students that reside within the school attendance boundary. Utilizing this data helps make it easy to see which schools have the largest and smallest enrollments as well as which boundaries are most populated. Schools with more students enrolled than those living in the boundary have a net transfer into the school. This is typically found at schools with special programs such as Gate or Dual Immersion, schools housing students from overcrowded or Program Improvement (PI) schools, and schools with more capacity than the student population living in the boundary.

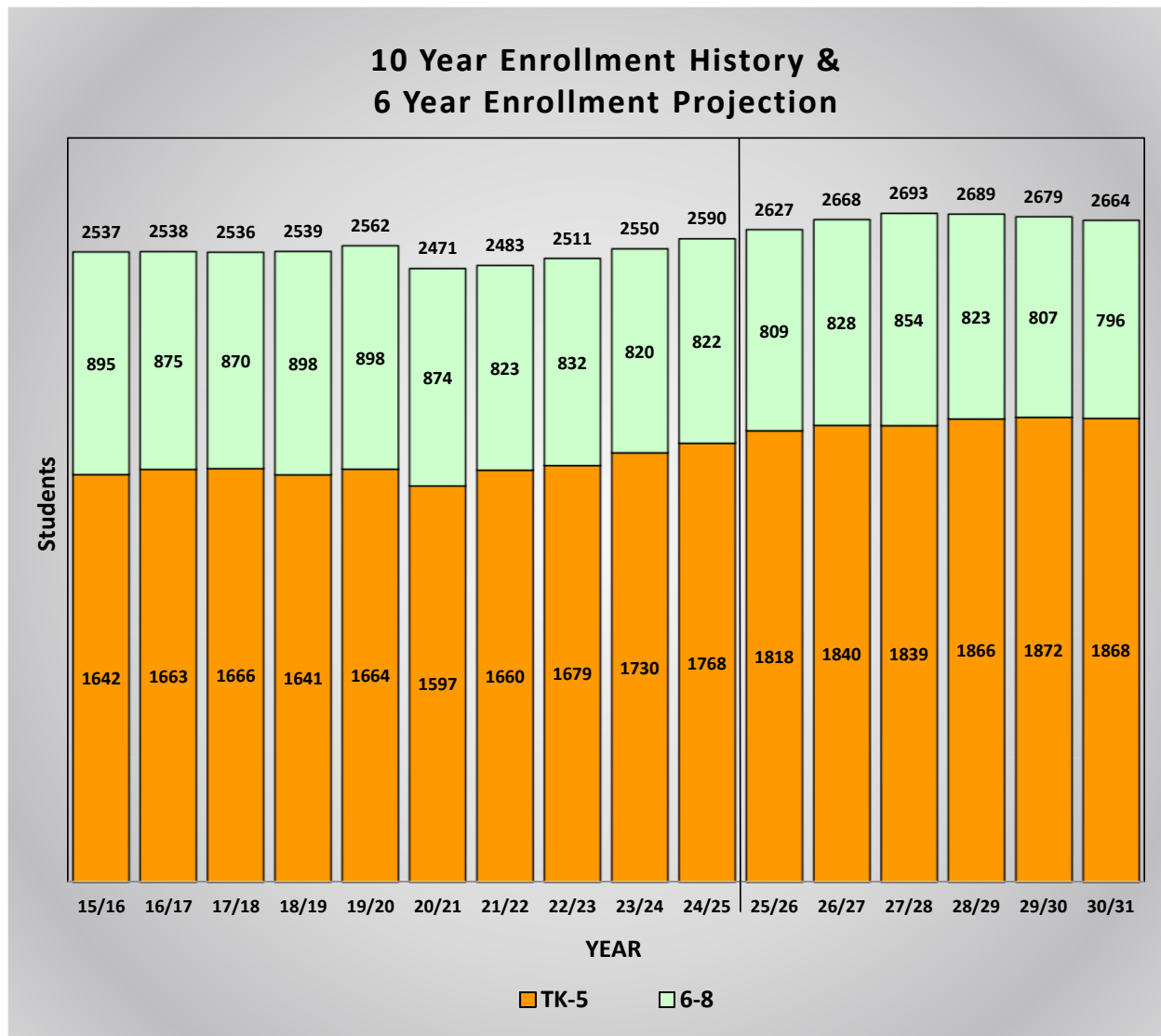
DRAFT

# Orinda Union School District

## 2024/25 Demographics and Enrollment Projections

### Ten Year Enrollment History and Six Year Enrollment Projections

This graph shows a summary of the projections for the entire District. It shows the current enrollment for 2024/25, the historic enrollment for the past nine years, and the projected enrollment for the next six years. The end result is a total of 2,664 students in the District in 2030/31.



The Orinda Union School District had a stable enrollment from 2,537 students during the 2015/16 school year to an enrollment of 2,562 in 2019/20, declined to an enrollment of 2,471 in 2020/21, and has since been growing slightly to a current enrollment of 2,590 students.

This graph is color coded by grade groupings:

Orange represents the historic and projected enrollment for the elementary school grades TK-5.  
Green represents the historic and projected enrollment for the intermediate school grades 6-8.

The entire District enrollment is shown at the top of each bar.



# Orinda Union School District

## 2024/25 Demographics and Enrollment Projections

### Enrollment Projection Summary by Grade

The chart below shows three years of historic enrollment, the current enrollment, and six years of projected enrollment by grade.

Orinda Union School District Enrollment Projection Summary by Grade										
Grade	Historic Enrollment			Current Enrollment	Projected Enrollment					
	<u>21/22</u>	<u>22/23</u>	<u>23/24</u>	<u>24/25</u>	<u>25/26</u>	<u>26/27</u>	<u>27/28</u>	<u>28/29</u>	<u>29/30</u>	<u>30/31</u>
TK	55	82	120	131	216	192	180	176	172	168
K	264	234	248	257	233	315	282	265	261	257
1	273	272	243	263	269	245	327	294	277	273
2	271	281	280	250	267	273	249	331	298	281
3	256	282	287	287	250	267	273	249	331	298
4	267	256	285	292	294	257	274	280	256	338
5	274	272	267	288	289	291	254	271	277	253
6	261	277	269	260	281	283	286	250	267	275
7	285	269	282	274	270	291	293	296	260	277
8	277	286	269	288	258	254	275	277	280	244
Total TK-5	1,660	1,679	1,730	1,768	1,818	1,840	1,839	1,866	1,872	1,868
Total 6-8	823	832	820	822	809	828	854	823	807	796
District Totals	2,483	2,511	2,550	2,590	2,627	2,668	2,693	2,689	2,679	2,664

### Enrollment Projection Summary by School

The chart below shows the current enrollment and six years of projected enrollment by school.

Orinda Union School District Enrollment Projection Summary by School							
School	Current Enrollment						
	<u>24/25</u>	<u>25/26</u>	<u>26/27</u>	<u>27/28</u>	<u>28/29</u>	<u>29/30</u>	<u>30/31</u>
Del Rey Elem	435	454	459	461	464	473	466
Glorietta Elem	445	443	430	435	435	439	437
Sleepy Hollow Elem	399	407	415	411	424	422	417
Wagner Ranch Elem	489	514	536	532	543	538	548
Elementary Totals	1,768	1,818	1,840	1,839	1,866	1,872	1,868
Orinda Intermediate	822	809	828	854	823	807	796
Intermediate Totals	822	809	828	854	823	807	796
District Totals	2,590	2,627	2,668	2,693	2,689	2,679	2,664
Annual Change		37	41	25	-4	-10	-15

DRAFT

## Orinda Union School District

### 2024/25 Demographics and Enrollment Projections

#### 2025/26 One Year Enrollment Projection by School and Grade

Orinda Union School District Enrollment Projections YEAR 25/26, 1 Year Proj.											
<u>School</u>	<u>T</u>	<u>K</u>	<u>1</u>	<u>2</u>	<u>3</u>	<u>4</u>	<u>5</u>	<u>6</u>	<u>7</u>	<u>8</u>	<u>TOTAL</u>
Del Rey Elem	63	56	69	56	66	73	71	0	0	0	454
Glorietta Elem	39	59	67	59	67	62	90	0	0	0	443
Sleepy Hollow Elem	54	51	63	69	49	66	55	0	0	0	407
Wagner Ranch Elem	60	67	70	83	68	93	73	0	0	0	514
Orinda Intermediate	0	0	0	0	0	0	0	281	270	258	809
<b>Totals</b>	<b>216</b>	<b>233</b>	<b>269</b>	<b>267</b>	<b>250</b>	<b>294</b>	<b>289</b>	<b>281</b>	<b>270</b>	<b>258</b>	<b>2,627</b>
Current CalPADS	131	257	263	250	287	292	288	260	274	288	2,590
<b>Net Change</b>	<b>85</b>	<b>-24</b>	<b>6</b>	<b>17</b>	<b>-37</b>	<b>2</b>	<b>1</b>	<b>21</b>	<b>-4</b>	<b>-30</b>	<b>37</b>
Cohort Change			12	4	0	7	-3	-7	10	-16	

Orinda Union School District has a current enrollment of 2,590 students. The projected enrollment for next year shows an increase of 37 students. This one year summary analyzes the net change between the current District enrollment by school and by grade, and the projected enrollment for 2025/26.

The students living in the boundary generate the cohort factors which are calculated for the past three years and the average is determined. Those cohorts are then used to determine the students who will be residing in each attendance area for the following years. Next the attendance factor is used to determine the net enrollment for each grade. The attendance factor is determined by analyzing the current year of students to see how many Inter- and Intra-district transfers there are. The cohort change factor indicates the change in the number of students for each grade compared to the number of students in the prior grade the previous year.

These projections assume the transfers between schools remain consistent. If changes in facilities, schedules, programs or policies are made, then the patterns may be impacted.

The actual enrollment for each elementary may vary from the numbers shown depending on which sites offer TK classes.

DRAFT

## Orinda Union School District

### 2024/25 Demographics and Enrollment Projections

#### SCHOOL FACILITY UTILIZATION

The following chart shows the current and projected utilization rates for each school. It has been color coded with blue representing schools with a utilization rate of less than 70%, yellow representing a utilization rate of at least 70% but under 80%, green representing a utilization rate of at least 80% but under 90%, orange representing at least 90% but under 100%, and a red outline for the schools that have 100% or higher utilization. The utilization indicates the long term impacts of the changes in enrollment as compared to the school capacities.

School Facility Utilization			2024/25	2030/31	2024/25	2030/31
	Net	Net CR	Current	Projected	Current	Projected
<u>Elementary Schools</u>	<u>Classrooms</u>	<u>Capacity</u>	<u>Enrollment</u>	<u>Enrollment</u>	<u>Utilization</u>	<u>Utilization</u>
Del Rey Elem	22	502	435	466	86.7%	92.8%
Glorietta Elem	22	508	445	437	87.6%	86.0%
Sleepy Hollow Elem	19	433	399	417	92.1%	96.3%
Wagner Ranch Elem	22	502	489	548	97.4%	109.2%
<b>Sub-Totals</b>	<b>85</b>	<b>1,945</b>	<b>1,768</b>	<b>1,868</b>	<b>90.9%</b>	<b>96.0%</b>
<u>Intermediate Schools</u>						
Orinda Intermediate	43	1,204	822	796	68.3%	66.1%
<b>Sub-Totals</b>	<b>43</b>	<b>1,204</b>	<b>822</b>	<b>796</b>	<b>68.3%</b>	<b>66.1%</b>
<b>District Totals</b>	<b>128</b>	<b>3,149</b>	<b>2,590</b>	<b>2,664</b>	<b>82.2%</b>	<b>84.6%</b>

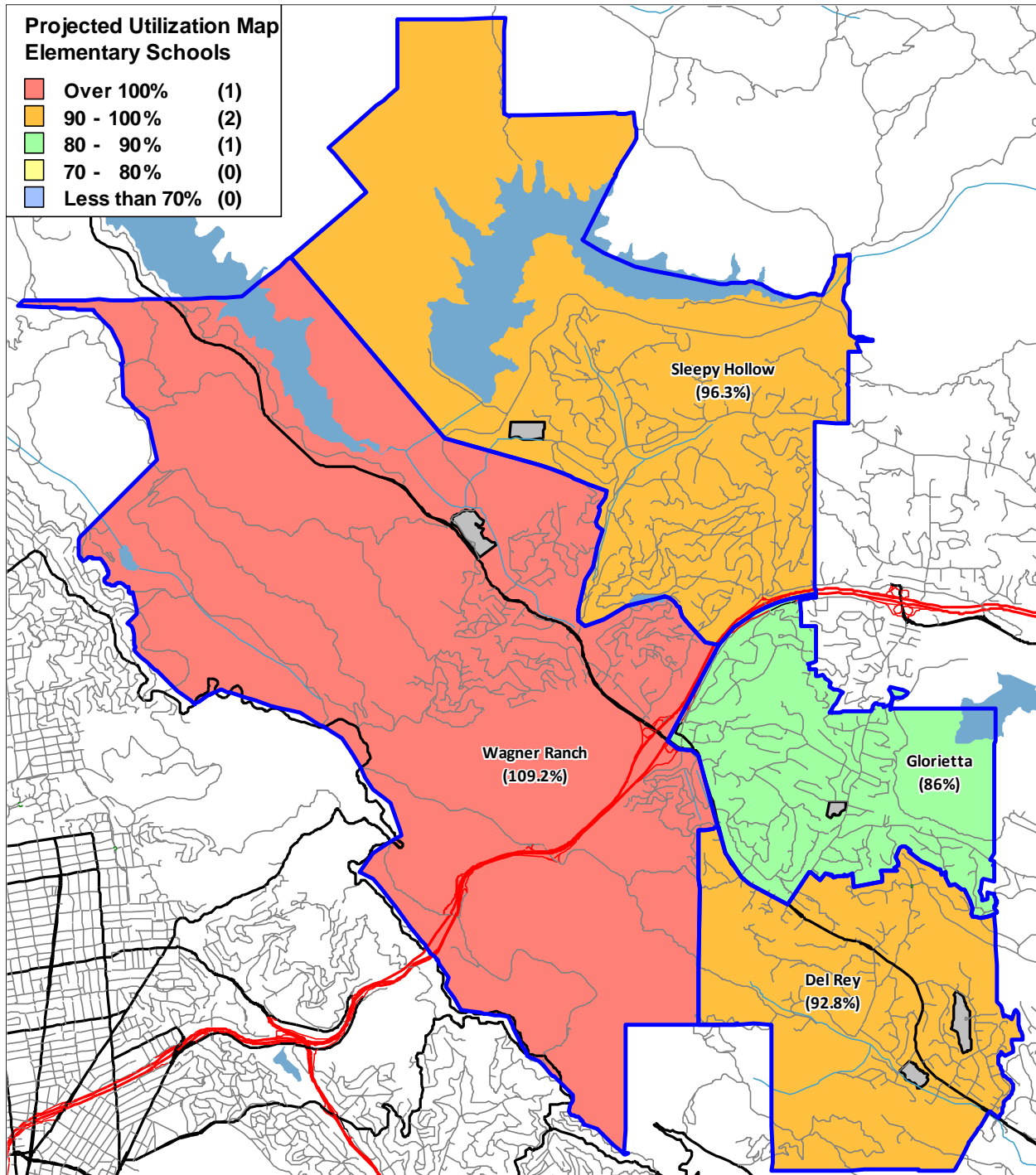
For 2024, the school with the highest percentage of available space is Orinda Intermediate and the school that is impacted the most is Wagner Ranch Elementary.

DRAFT

# Orinda Union School District

## 2024/25 Demographics and Enrollment Projections

The color-coded map below shows the projected utilization for the elementary schools.



DRAFT