

ADDENDUM NO. 1

**BONITA UNIFIED SCHOOL DISTRICT
BID NO. 2025-26-03
ROOFING AT VARIOUS SITES**

The following clarifications, responses, changes, additions, deletions, or corrections shall become part of this solicitation and the contract documents for the bid named above.

1. Can I get a walk pad layout for the following sites?

- **Bonita HS**
- **Fred Ekstrand ES**

Item #1: Ekstrand Elementary School Room 19-20 - Removal of Roof Mounted Fascia Metal:

- A. The existing roof mounted metal fascia cover along the south side of the roof is to be removed.



Item #2: Ekstrand Elementary School Room 19-20 – Wrapping of Existing Raise Metal/Coping Edge:

- A. The existing coping/raised metal edge is to be wrapped with the KEE flashing sheet.
 - a. Install cant strips to smooth the transition from the roof top face of the coping/raised metal.
 - b. Install edge metal as specified and secure through top face of coping metal. Heat weld flashing sheet over edge metal flange as specified.

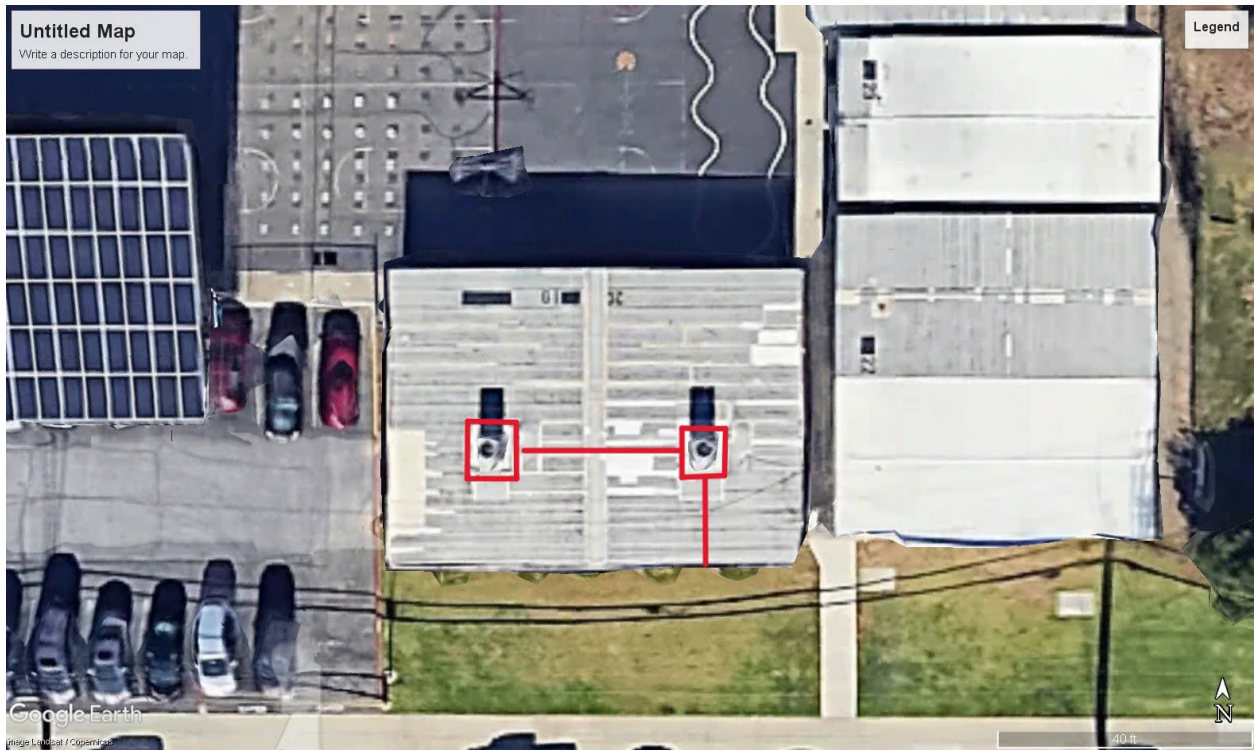
Item #3: Replacement of Existing Gutters at Ekstrand ES and Ramona MS:

- A. At all buildings where existing gutters are present, all existing gutters are to be removed and replaced as follows and according to roofing manufacturer requirements:
 - a. Fabricate a new 16” girth gutter, supported by brackets, reinforced with internal straps, expansion joints every 50’ and complete with outlet drainage tubes.
 - b. 24 gauge bonderized metal gutter. Contractor shall paint gutters with color selected by Cucamonga School District.
 - c. Mechanically attach 10 gauge gutter brackets using two 2” screws per bracket to the outside face of the wall 36 inches o. c.. Install gutter onto brackets and slope gutter to outlets. Powder coat brackets to match gutter.
 - d. Install 16 gauge galvanized internal straps every 36 inches o. c.
 - e. Lap gutter section joints 1 inch minimum and lap in the direction of flow so as not to impede the flow of water. Rivet 2 inches o. c. and cover with Polytape.
 - f. Install edge detail as described above without the continuous cleat.
 - g. Install 4 inch, 16-gauge steel downspouts supported by 10 gauge brackets leading to the ground. Elbow out to direct water away from building. Powder coat to match coping.

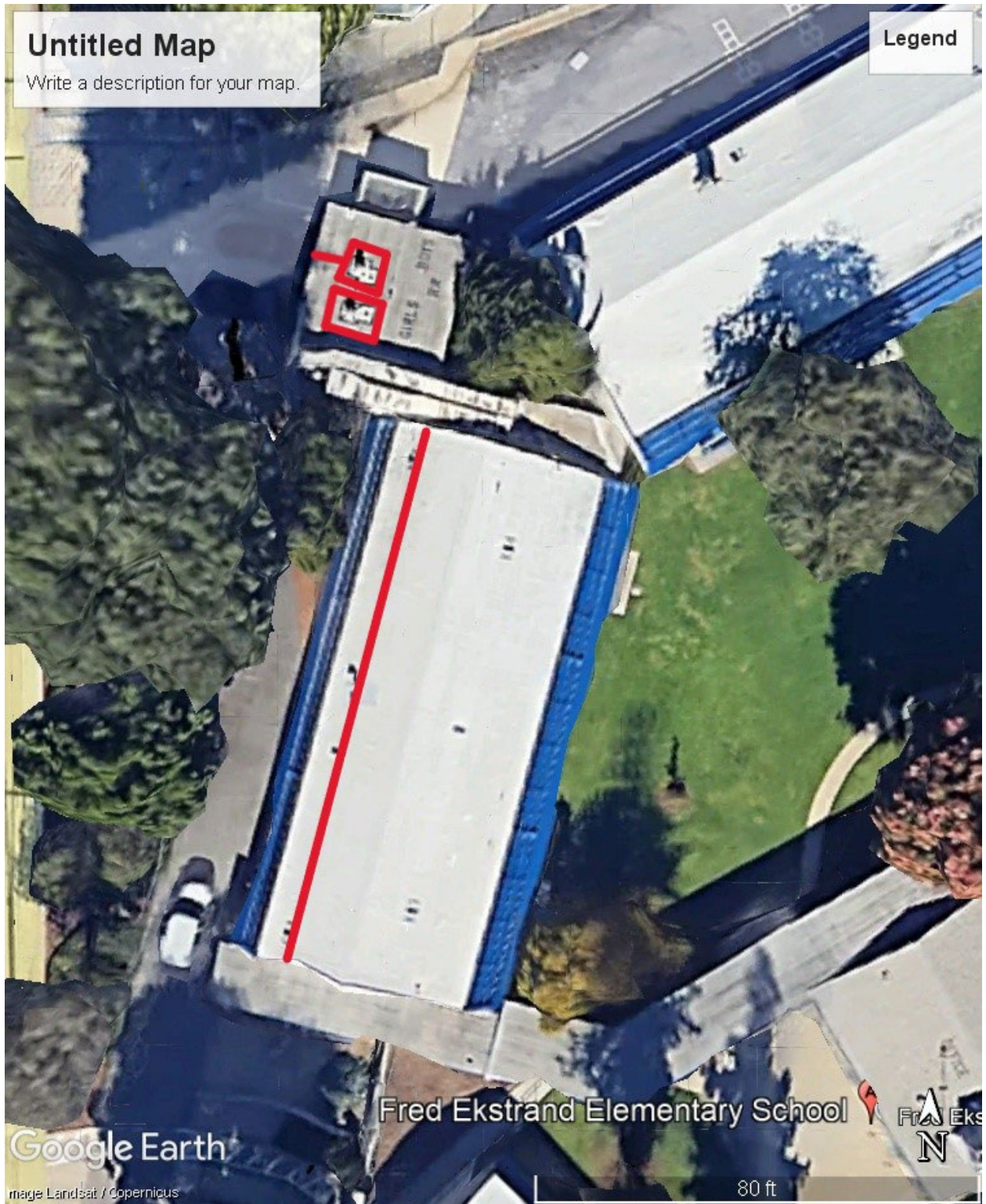
Bonita HS 500 Building:



Ekstrand ES 19-20:



Ekstrand ES Classroom/Restroom Building:



END OF ADDENDUM NO. 1

BELOW, PLEASE ACKNOWLEDGE RECEIPT OF THIS ADDENDUM AND SUBMIT IT WITH YOUR BID.

Company Name: _____

Signature: _____

Print Name: _____

Title: _____

Date: _____